

**The Ontario Line
Lakeshore East Joint Corridor
Early Works
Construction Liaison Committee**

September 14, 2023

Land Acknowledgement

Let us take a moment to acknowledge we are on lands that have been, and continue to be, home to many Indigenous Peoples including the Anishnabeg, the Haudenosaunee and the Huron-Wendat peoples.

We are all Treaty people. Many of us have come here as settlers, as immigrants or involuntarily as part of the trans-Atlantic slave trade, in this generation, or generations past.

We acknowledge the historic and continued impacts of colonization and the need to work towards meaningful reconciliation with the original caretakers of this land.

We acknowledge that Metrolinx operates on territories and lands covered by many treaties that affirm and value the rights of Indigenous communities, Nations and Peoples.

We understand the importance of working towards reconciliation with the original caretakers of this land. At Metrolinx, we will conduct business in a manner that is built on a foundation of trust, respect and collaboration.

Agenda

Welcome:

- Land Acknowledgement
- Safety Moment

Complaints and Issues Tracker

Construction Update:

- Construction Progress Update
- Upcoming Construction Activities
- Update: Bridge Works and Road Closures

Discussion/Next CLC



Safety Moment - Smoke & Carbon Monoxide Detectors

- Working smoke alarms give you time to escape a fire or carbon monoxide situation.
- By law, every home in Ontario must have a working smoke alarm on every storey and outside all sleeping areas of the residence.
- Smoke alarms can be powered electrically, by batteries or both. If you are installing an electrically powered alarm, it is best practice that it have a battery backup in case of a power failure.
- Test your smoke alarms every month by using the test button on the alarm.
- Install a new battery at least once a year, or as recommended by the manufacturer. Install a new battery if the low-battery warning sounds or if the alarm fails to sound when tested.
- All smoke alarms wear out. Replace them every 10 years according to the manufacturer's instructions.



Complaints and Issues Tracker

Complaint / Issue	Resolution
<p>Signage</p> <ul style="list-style-type: none"> Queen St E Aug 17, 2023 	<ul style="list-style-type: none"> Received report that truck detour signs were still present. Resolution: Truck detour signs are still required for the ongoing utility relocations work at the Queen Street Bridge
<p>Access</p> <ul style="list-style-type: none"> Queen St E Aug 18, 2023 	<ul style="list-style-type: none"> Call from resident reporting truck blocking fire hydrant Resolution: Contractor will only park within lane closure or laydown area
<p>Access</p> <ul style="list-style-type: none"> Fontbonne Parking Lot Aug 23, 2023 	<ul style="list-style-type: none"> Email from resident inquiring about driveway restrictions at Queen St E and Strange St during construction Resolution: Flag person will assist with vehicle access
<p>General Inquiry</p> <ul style="list-style-type: none"> Booth Ave Aug 23, 2023 	<ul style="list-style-type: none"> Resident reported concern about structure of their home during drilling work Resolution: No drilling works taking place at time of complaint. Resident encouraged to contact the Ontario Line Community Engagement office if the incident occurs again.
<p>Utilities</p> <ul style="list-style-type: none"> Paisley Ave Aug 23, 2023 	<ul style="list-style-type: none"> Resident reported that their internet was cutting out Resolution: Verified that there was no work on utilities that would have affected internet
<p>Access</p> <ul style="list-style-type: none"> Queen St E Aug 27, 2023 	<ul style="list-style-type: none"> Call from resident reporting person occupying construction site Resolution: DCC investigated and person was not found. Verified that site was secured.
<p>Access</p> <ul style="list-style-type: none"> Queen St E/Strange St Aug 29, 2023 	<ul style="list-style-type: none"> Call from resident inquiring about end of utility relocation works in the vicinity of Strange/Queen and location of construction materials. Resolution: MX CE confirmed utility works will be ongoing on Strange St until late September. Construction materials were relocated.

Complaints and Issues Tracker (continued)

Complaint / Issue	Resolution
<p>Notices</p> <ul style="list-style-type: none"> • Queen St E • Aug 29, 2023 	<ul style="list-style-type: none"> • Receipt of construction notice by mail after works completed • Resolution: Distribution processed reviewed with Canada Post and printers. Upcoming bridge demolition notices have been distributed through multiple suppliers to ensure timely delivery.
<p>Property</p> <ul style="list-style-type: none"> • Jimmie Simpson • Sept 1, 2023 	<ul style="list-style-type: none"> • Concerns about cracks in home due to construction • Resolution: Report shared with DCC for further investigation.
<p>Noise</p> <ul style="list-style-type: none"> • Queen St E • Sept 1, 2023 	<ul style="list-style-type: none"> • Overnight noise report • Resolution: Part of in-corridor overnight work as notified in August. In-house noise mitigation to be provided to resident.
<p>Fencing</p> <ul style="list-style-type: none"> • First Ave • Sept 7, 2023 	<ul style="list-style-type: none"> • Report of two (2) gaps in fencing around demolished properties on First Ave. • Resolution: Contractor was brought in to repair the gaps in the fencing.
<p>Trees</p> <ul style="list-style-type: none"> • Logan Ave • Sept 8, 2023 	<ul style="list-style-type: none"> • Resident reported fallen tree branch • Resolution: Tree branch has been removed by Dufferin Construction. Metrolinx and Dufferin are coordinating remedial action directly with property owner.

Ontario Line Construction Update

Lakeshore East Joint Corridor

Early Works Construction

Construction Progress Updates

Completed Works

- ✓ Girder installed at Queen St. E. Bridge
- ✓ 350m of subgrade graded and levelled to prepare for track realignment
- ✓ Dickens St Parking Lot
- ✓ 2 Paisley Demolition

Access Road Construction Progress:

Completed:

- ✓ Eastern Ave/Dibble St
- ✓ Queen St/McGee St
- ✓ Dundas St behind Paisley Ave
- ✓ 10 Dickens St

Ongoing:

- Pape Ave north of Gerrard St. E.
- Dundas St/Logan Laneway

Remaining:

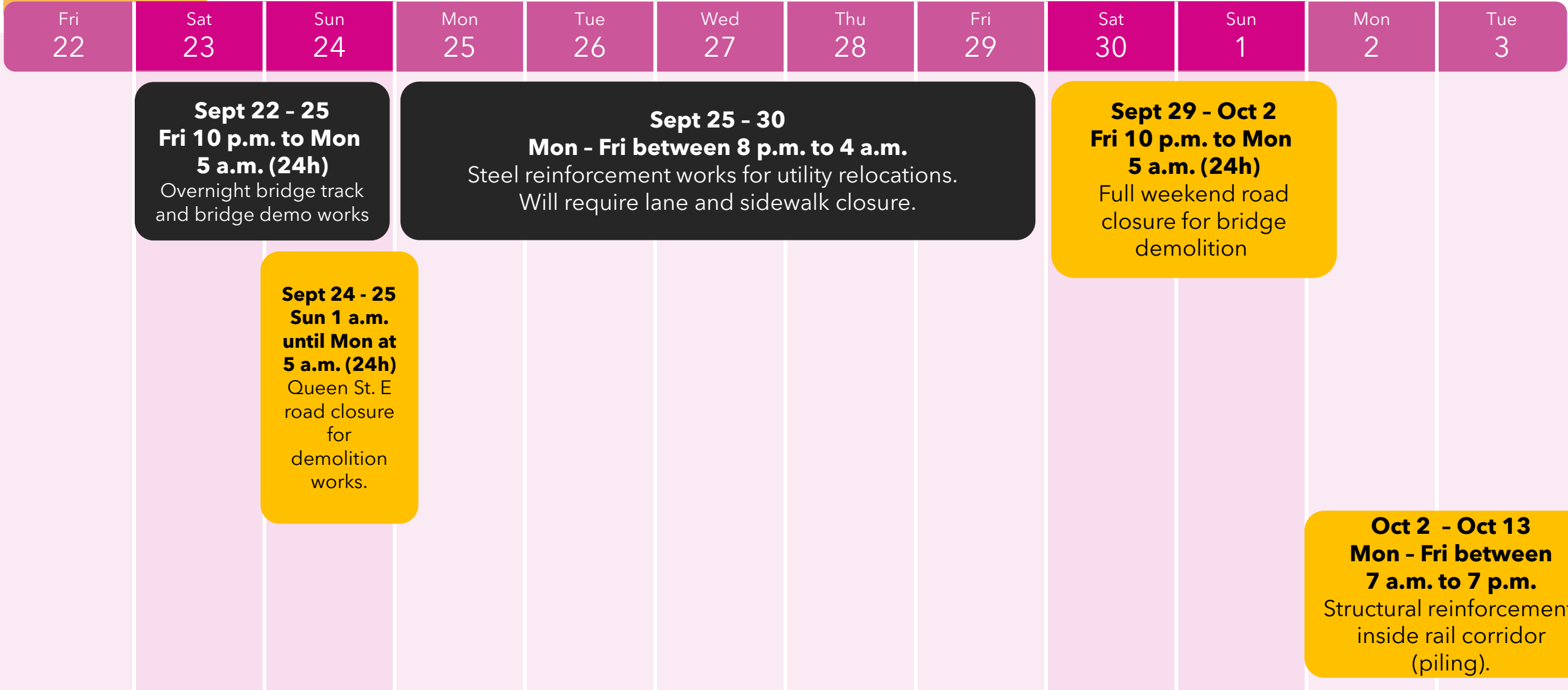
- Queen St North - Starting mid-October 2023



Queen St. E. Bridge Girder Installation
Aug 12 - 13, 2023

Queen Street Bridge Works

September



Queen Street Bridge - What to Expect

September 22 - 24, 2023

- **Track realignment:** Involves cutting rail, moving and connecting tracks into their new position
- **Bridge demolition:** Excavators, jack hammers, and saws will be used to demolish the concrete bridge deck. Dump trucks will be used to remove concrete and other demolished materials.

September 25 - 30, 2023

- Welding equipment will be used to reinforce and connect structural steel beams to facilitate utility relocations (night work)

September 29 - October 2

- Resume bridge deck demolition works; construction activities will include concrete breaking, saw cutting, loading and hauling materials.
- **What to Expect**
- Queen St. E. road closures on Sept 24 and Sept 29 - Oct 2.
- Noise from construction activity including concrete breaking, saw cutting, rail cutting and movement of equipment and materials.
- 24-hour work during road and rail corridor closures.
- No GO train service on the Lakeshore East Corridor starting the evening of Sept 22 until end of service on Sept 24.
- TTC 501 Streetcar service changes until Oct 8.

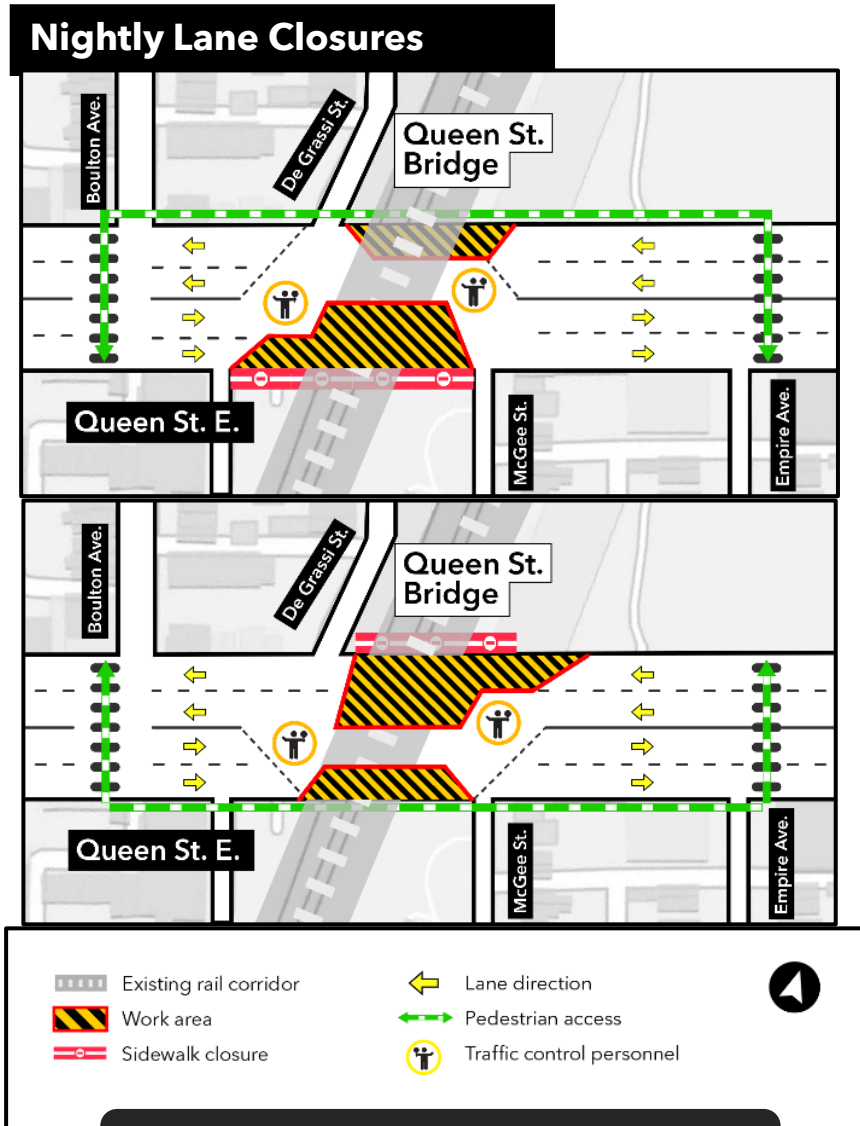
Queen Street bridge temporary girder structure



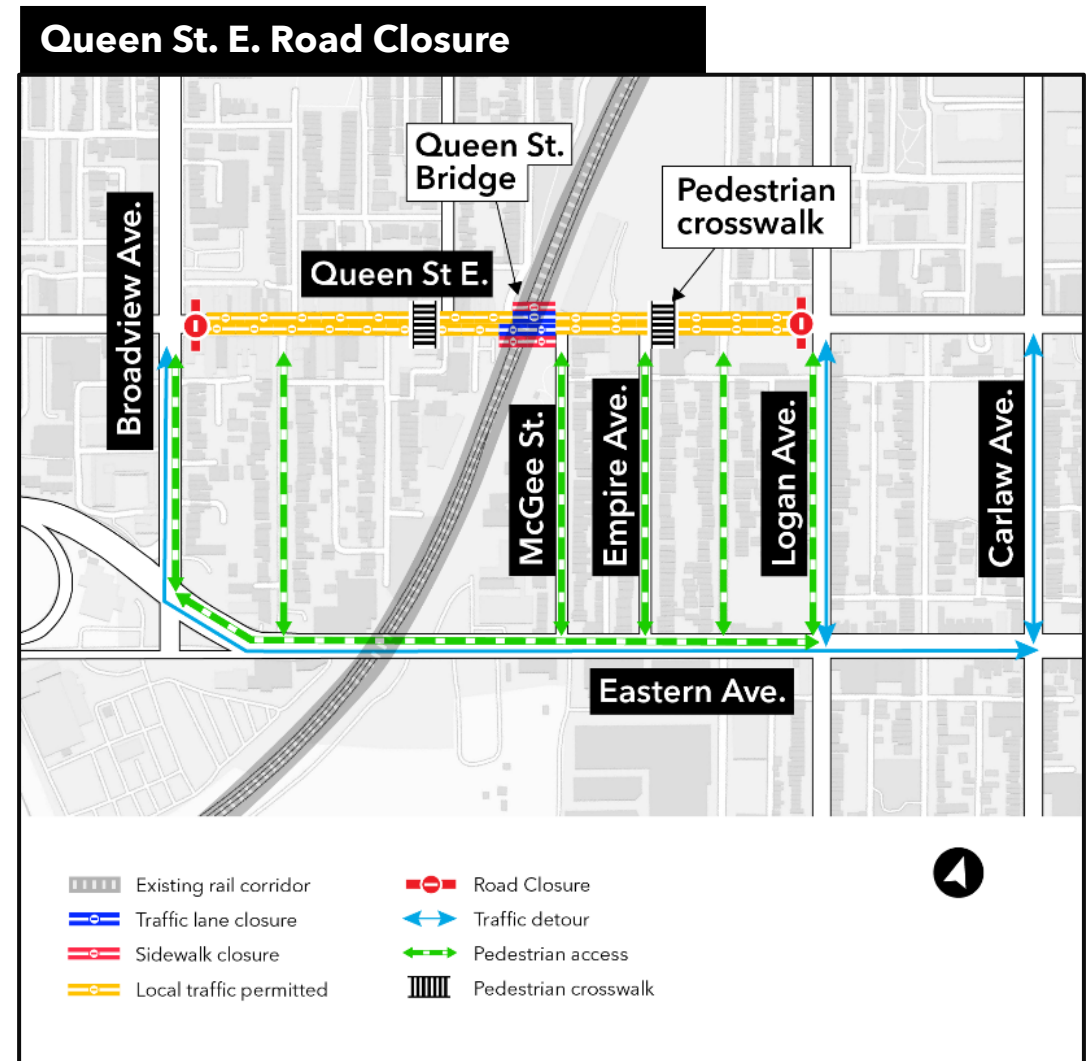
Dump trucks will be used to remove demolished materials from the bridge



Traffic Configuration: Queen Street East Bridge Works



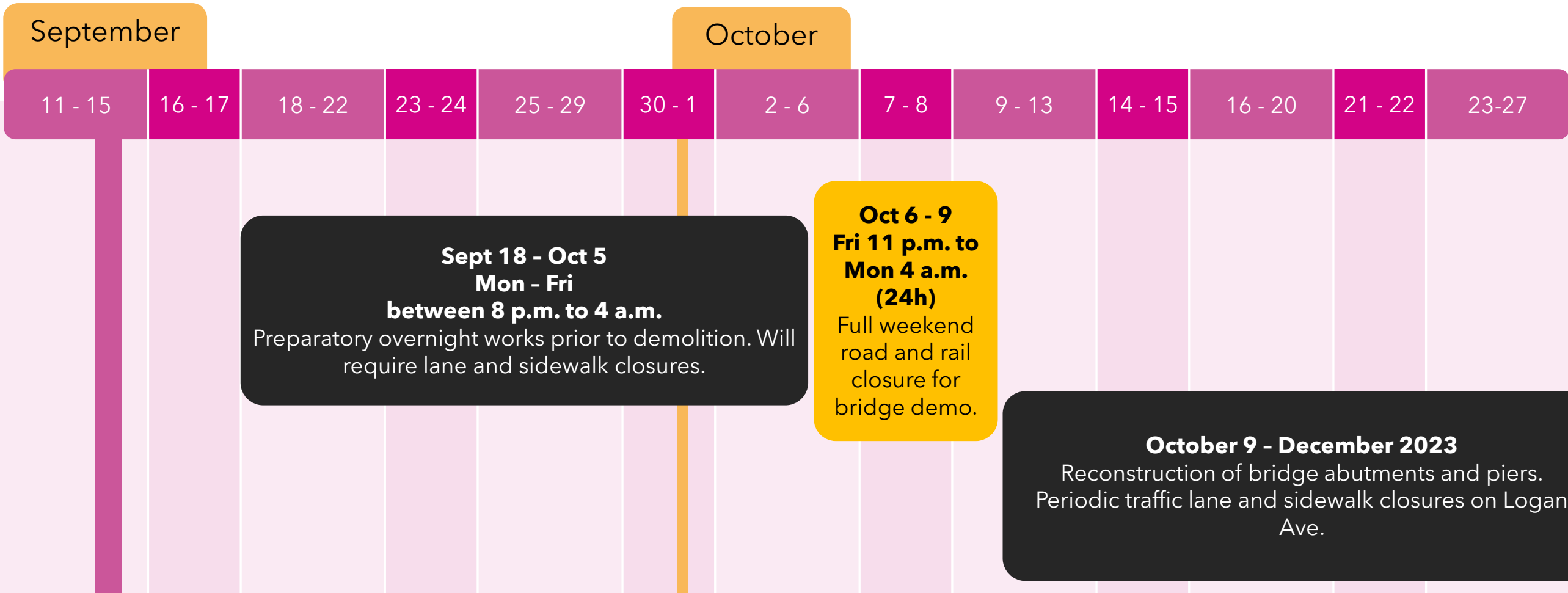
Sept 25 - 30
Mon - Fri between 8 p.m. to 4 a.m.



Sept 24 - 25
Sun 1 a.m. until Mon at 5 a.m. (24h)

Sept 29 - Oct 2
Fri 10 p.m. to Mon 5 a.m. (24h)

Logan Ave Bridge Works



Logan Ave Bridge - What to Expect

September 18 - October 5

- Pre-cutting the concrete bridge deck with saws to prepare for weekend bridge demolition (overnight work)

October 6 - October 9

- Demolition and removal of a section of the bridge deck
- Overnight concrete breaking, saw cutting, torch cutting, material removal

October 9 - December 2023

- Partial road and sidewalk closures on Logan Ave for reconstruction of bridge abutments and piers

Impacts

- Logan Ave road closure from Oct 6 - Oct 9, 2023
- Temporary traffic lane and sidewalk closures on Logan Ave before and after the bridge demolitions
- Noise from construction activity including concrete breaking, saw cutting, and movement of equipment and materials.

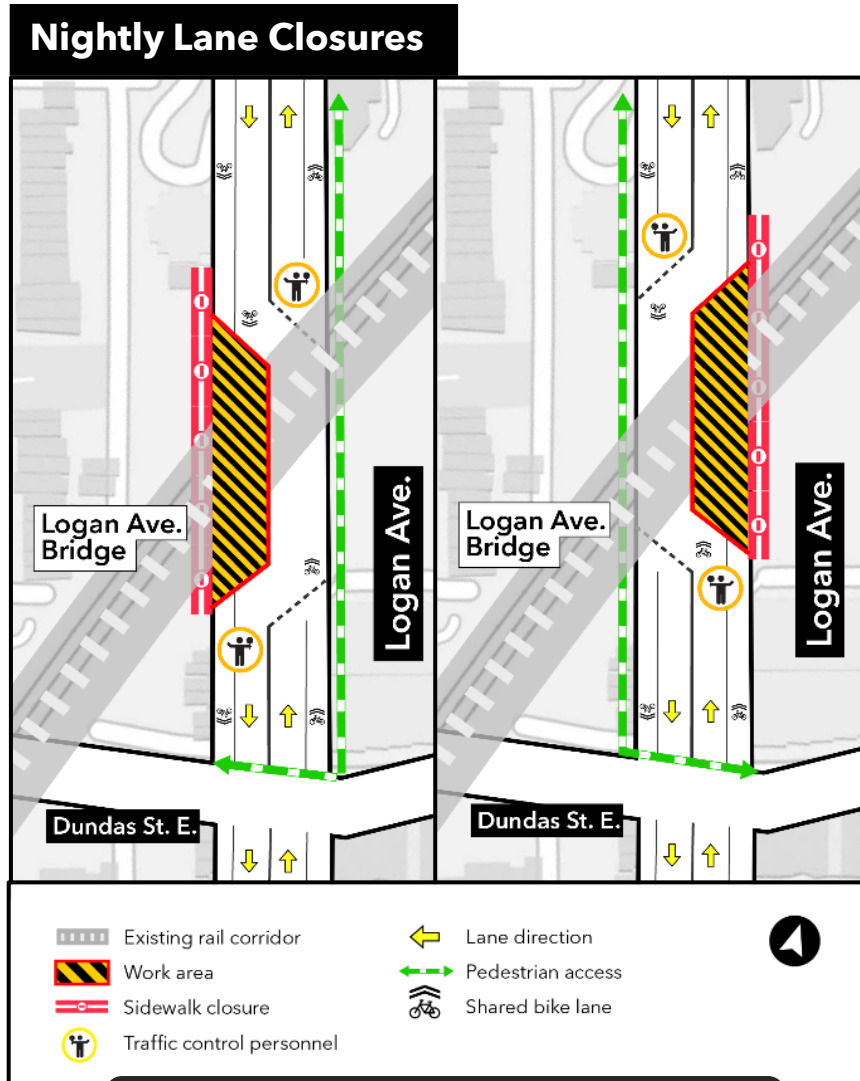


Logan Bridge from the Rail Corridor

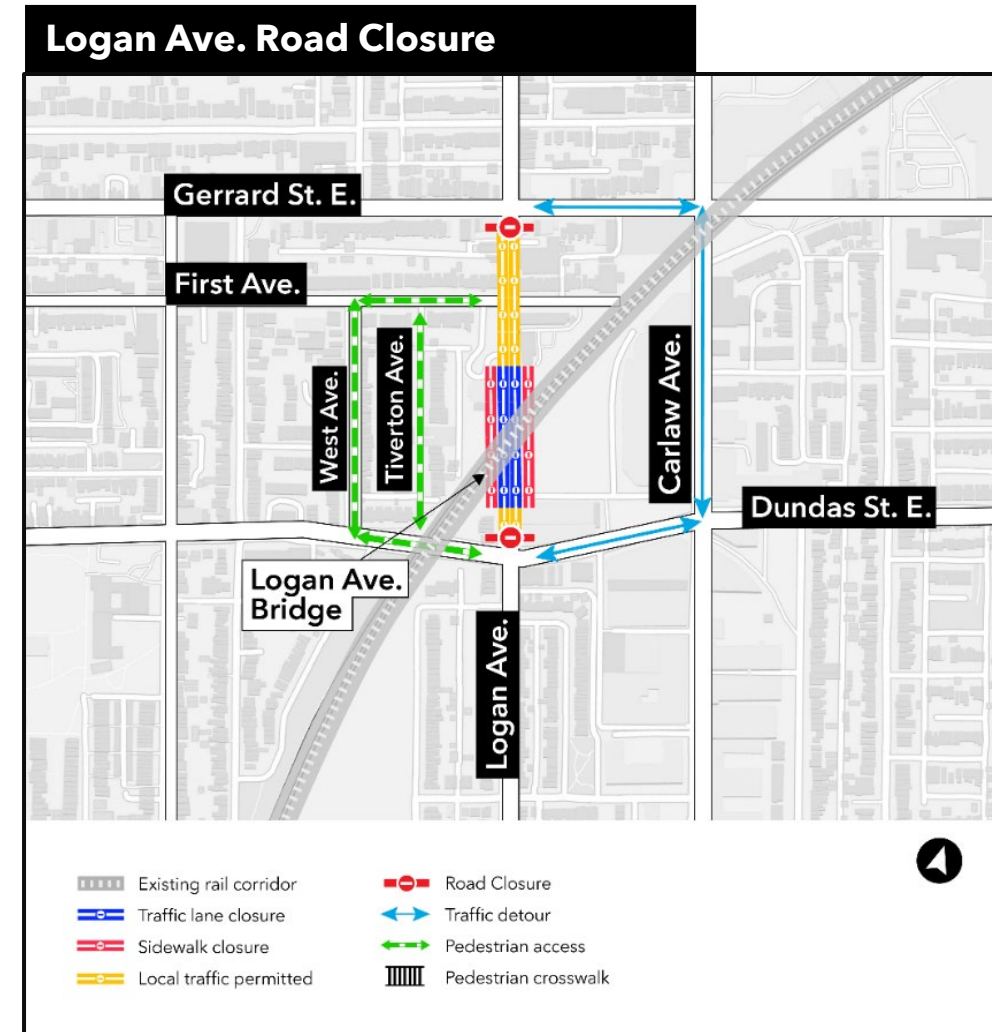


Excavators and loaders to be used during bridge demolition works

Traffic Configuration: Logan Ave Bridge Works

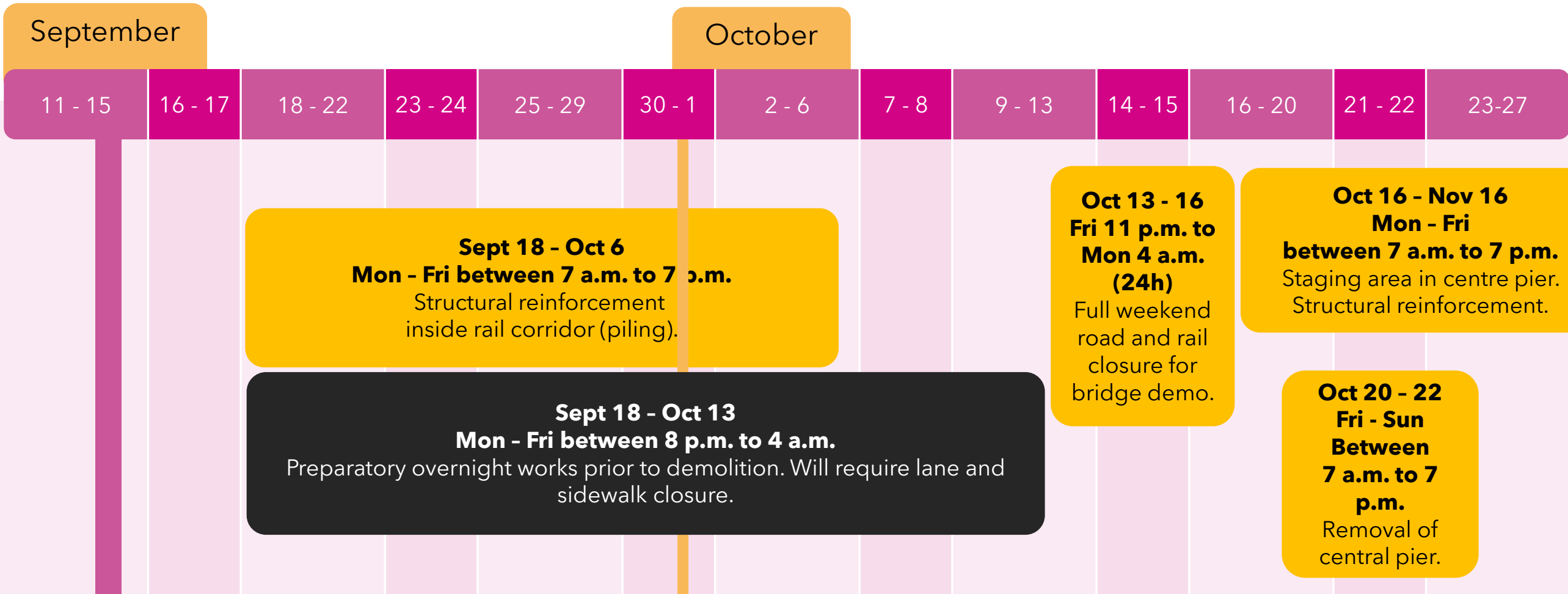


Sept 18 - Oct 5
Mon - Fri between 8 p.m. to 4 a.m.



Oct 6 - 9
Fri 11 p.m. to Mon 4 a.m. (24h)

Dundas Street Bridge Works



Dundas Street Bridge - What to Expect

September 18 - October 13

- Pre-cutting the concrete bridge deck with saws to prepare for weekend bridge demolition (overnight work).

October 13 - October 16

- Demolition and removal of a section of the bridge deck
- Overnight concrete breaking, saw cutting, torch cutting, material removal

October 16 - November 16

- Partial road and sidewalk closures on Dundas St. E. for demolition of centre piers

Impacts

- Dundas St. E. road closure from Oct 13 - Oct 16, 2023
- Temporary traffic lane and sidewalk closures on Logan Ave before and after the bridge demolitions
- Noise from construction activity including concrete breaking, saw cutting, and movement of equipment and materials.



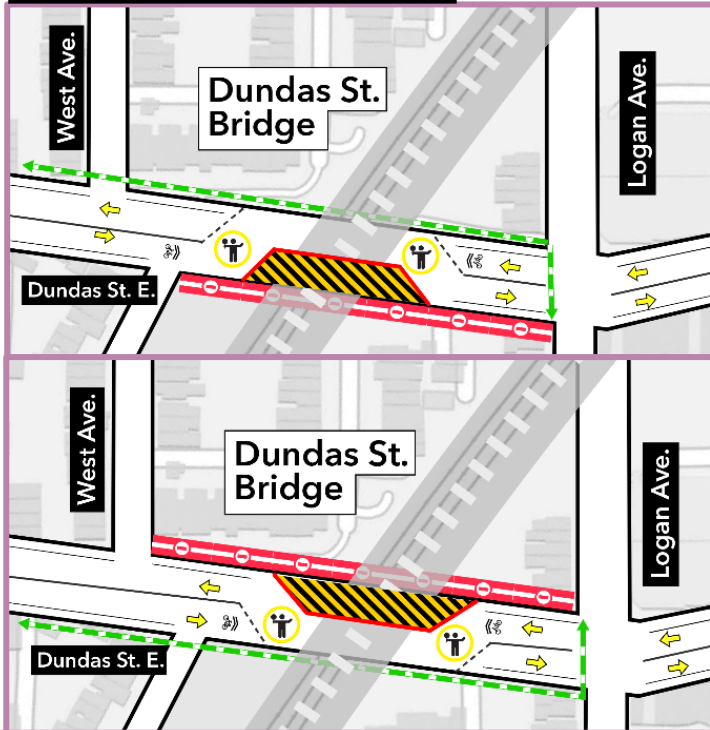
Dundas Bridge from the Rail Corridor



A pile drill rig to be used during structural reinforcement works

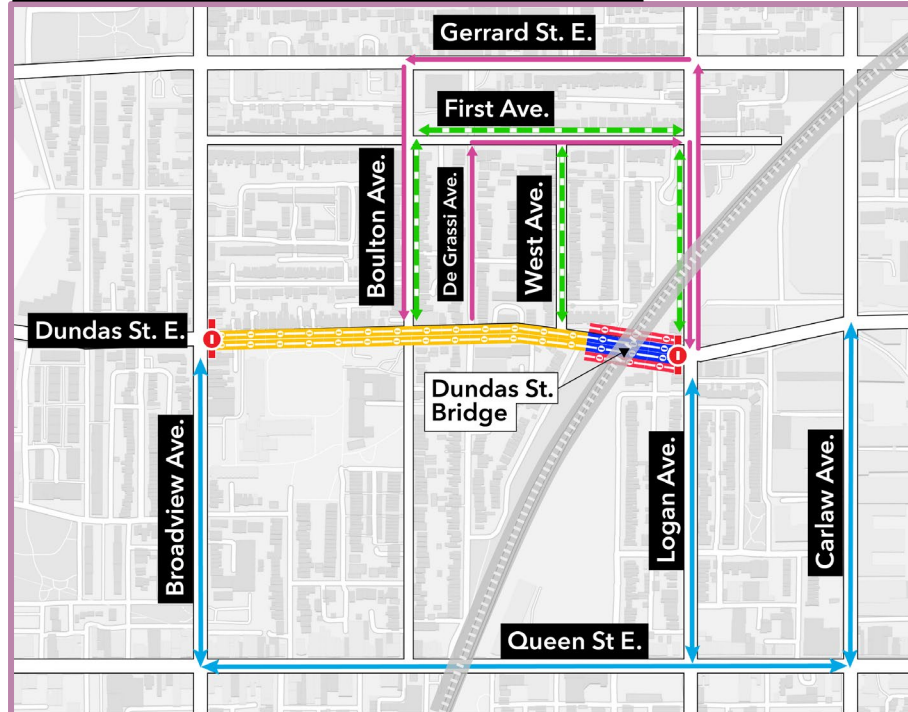
Dundas Street Bridge Works Maps

Preparation works



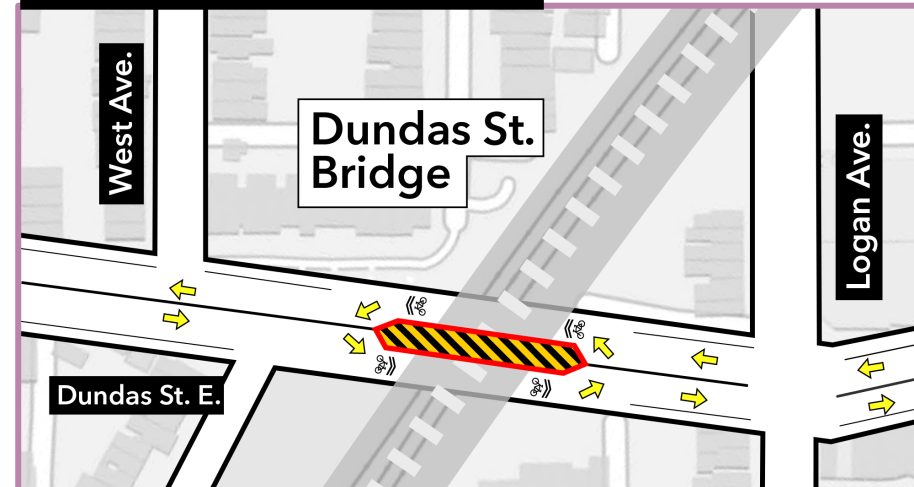
Sept 18 - Oct 13
Mon - Fri between 8 p.m. to 4 a.m.

Demolition works road closure



Oct 13 - 16
Fri 11 p.m. to Mon 4 a.m. (24h)

Bridge pier reinforcement and removal



Oct 16 - Nov 16
Mon - Fri between 7 a.m. to 7 p.m.

Construction Schedule and Mitigations: Bridge Works

Careful consideration has gone into the planning for the bridge works at Queen St. E., Logan Ave., Dundas St. E.

The work schedule has been coordinated with neighbouring Ontario Line projects (East Harbour and the Don Yard) to maximize productivity and ensure all testing and commissioning works are completed in time to safely reopen the rail corridor.

Overnight work is required for the safety of construction crews, to minimize transit impacts, and to complete construction as fast as possible.

Noise mitigations will be implemented during the bridge works, including:

- On-site noise mitigation measures including temporary noise barriers and broadband vehicle back up alarms will be used to help reduce noise wherever possible
- Noise monitoring will be in place throughout the works
- The contractor will do their best to schedule noisier work during the day and reduce unnecessary noise during the overnight period
- A 24/7 hotline (416-202-5100) is in place to report issues and concerns



Excavator behind temporary noise barriers

Jimmie Simpson Park Retaining Wall Removal & Barrier/Fence Installation

In late September 2023, the existing retaining wall and chain link fence in Jimmie Simpson Park will be removed to allow for the construction of the new T-Walls and noise barriers.

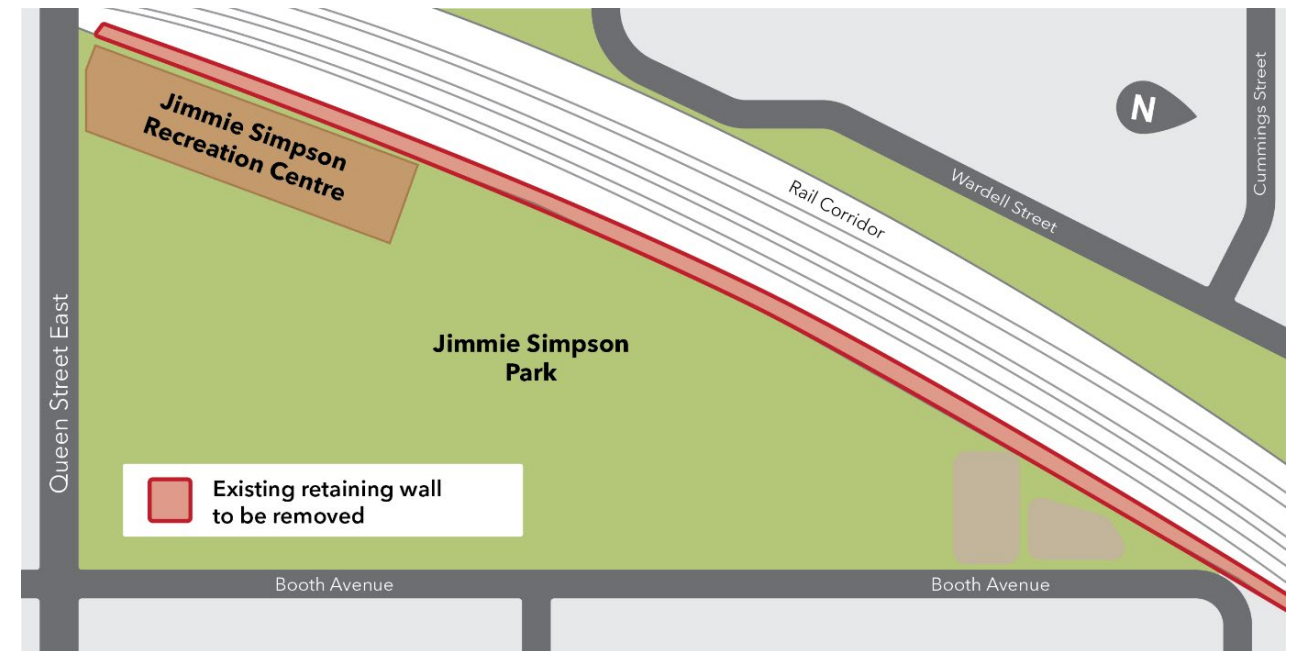
Fencing and barriers will be installed around the perimeter of the existing retaining wall to ensure the work is completed safely.

The plan will include safe separation of the work area and the playground.

Metrolinx is currently working with City of Toronto Parks, Forestry and Recreation to develop a plan for the barrier and fence installation.

The Community will be notified in advance of the work.

If there is a suitable place for art, Metrolinx will work with the community on input.



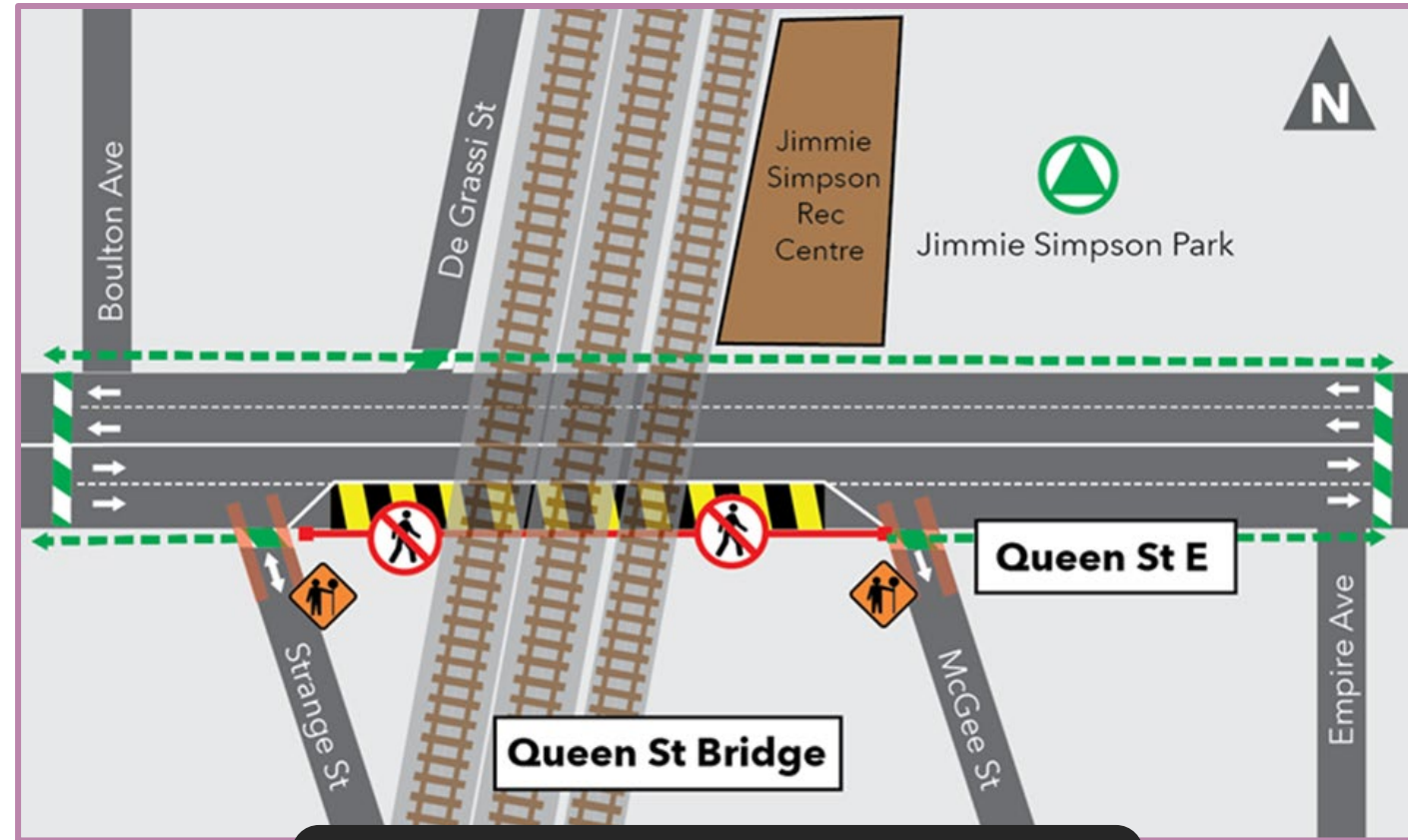
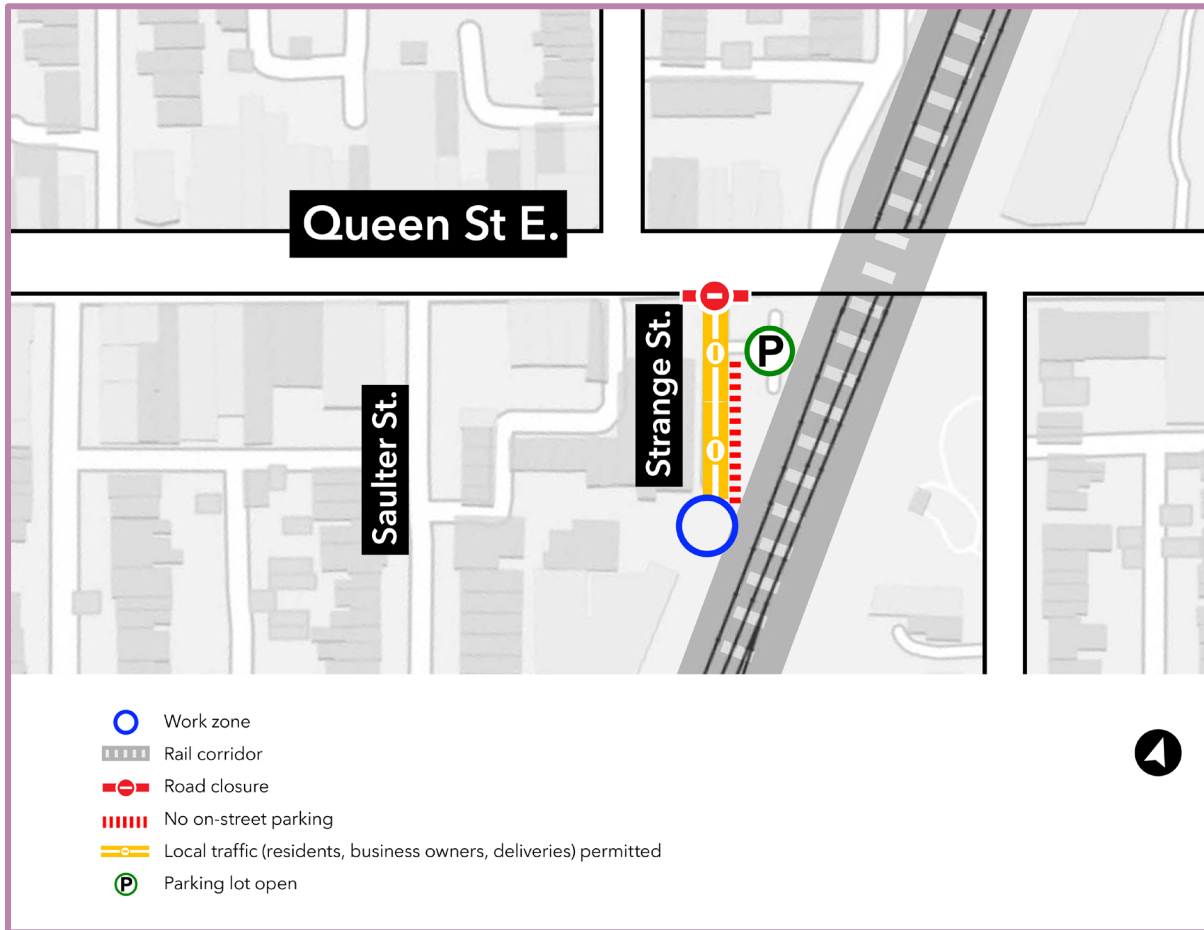
Construction Update: Utility Works

Activity	Location	Timelines	What to Expect
TTC utility relocations	South side of Queen St. E. between McGee St. and Strange St.	Ongoing approximately late October 2023.	<ul style="list-style-type: none"> • Eastbound traffic reduced to one lane on Queen St. E. • Sidewalk on south side of Queen St. E. closed between McGee St. and Strange St. • Periodic lane closures on Strange St. and McGee St.
Strange St./Dibble St. sewer relining	Strange St. and Dibble St.	Starting early October 2023 for approximately three (3) weeks	<ul style="list-style-type: none"> • Strange St. closed at Queen St. E. for approx. 1-2 days
Logan Ave sewer installation	Logan Ave. and Dundas St. E.	Starting early October 2023 for approximately three (3) weeks	<ul style="list-style-type: none"> • Street parking under Logan Ave. bridge closed • Temporary traffic lane reductions on Logan Ave
Degrassi St utility relocations	Degrassi St. and Strange St.	November 2023 for approximately three (3) weeks	<ul style="list-style-type: none"> • Traffic management measures on Degrassi St. and Strange St.
Dundas St E utility relocations	Dundas St. E. between Logan Ave. and West Ave.	November 2023 for approximately three (3) weeks	<ul style="list-style-type: none"> • Temporary traffic lane reductions on Dundas St. E.



These works will prepare utilities - including hydro, cable, fibre, phone, water, and sewers - for new infrastructure by moving and upgrading them. Some of them are at least 100 years old and will now be prepared for the next 100.

Traffic Configuration: Strange Street and Queen Street East Utility Relocations



**Starting early October for one - two days
Mon - Fri between 7 a.m. and 7 p.m.**
Relining and strengthening the existing sewer.

**Ongoing until late October 2023
Mon - Fri between 7 a.m. and 7 p.m.**
Relocating the TTC streetcar power supply
below ground to enable bridge works.

What's Next and Wrap Up

Upcoming Community Engagement and Outreach

- **Community Office Pop-Ups:**
 - Saturday September 23rd
 - Sunday September 24th
 - Saturday September 30th
 - Sunday October 1st
- **Stakeholder Outreach:**
 - Fontbonne Ministries - Wednesday September 13th
- **Next CLC Meeting:**
 - Thursday, October 12th

Contact Us

Metrolinx will keep the community, residents and businesses informed by providing project updates, seeking input and feedback, and addressing questions and concerns effectively and quickly.

Stay connected:

Ontario Line e-newsletter @ [Metrolinx.com/OntarioLine](https://www.metrolinx.com/OntarioLine)

Questions or comments:

OntarioLine@metrolinx.com

24/7 call # 416-202-5100

Follow us on social media:

Twitter / Facebook / Instagram @ OntarioLine



Questions and Answers



Appendix

Construction Mitigation



Noise Barriers

Where possible, temporary barriers surround loud equipment to reduce noise.



Advance Notice

Providing notice ahead of construction to give local stakeholders the opportunity to ask questions and plan for the work.



Site Maintenance

Keeping the site clean and tidy to support the positive appearance of the neighbourhood.



Noise Monitors

Located throughout the rail corridor, these monitors measure noise to make sure proper levels are maintained.



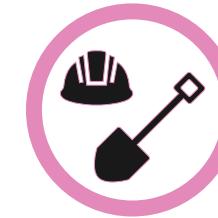
Hoarding and Signage

Hoarding provides a protective barrier between the construction site and the public. Signage informs of ongoing and upcoming work, as well as way-finding.



24-Hour Support

Providing a 24-hour call number to address complaints and issues.



Mindful Work Schedules

Work is scheduled to consider community needs, other major projects, and neighbourhood events.



Good Neighbor Approach

Making sure project staff are considerate of the community during construction.

CLC Meeting Cadence for 2023

The CLC to meet on the last Thursday of each month at 6:30 to 7:30 p.m. Virtual with hybrid option at the Community Office.

- September 14
- October 12
- November 9
- December 7

CLC Code of Conduct



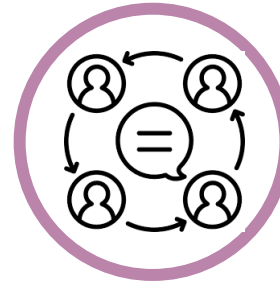
Participate fully, openly, and transparently in discussions, while also creating an environment where all members are encouraged to contribute and share their views.



Participate in a respectful manner towards other CLC members by using appropriate language.



Keep requested agenda and discussion items within the **mandate and scope** of the **Construction Liaison Committee**.



Represent their community's diverse perspectives and interests.

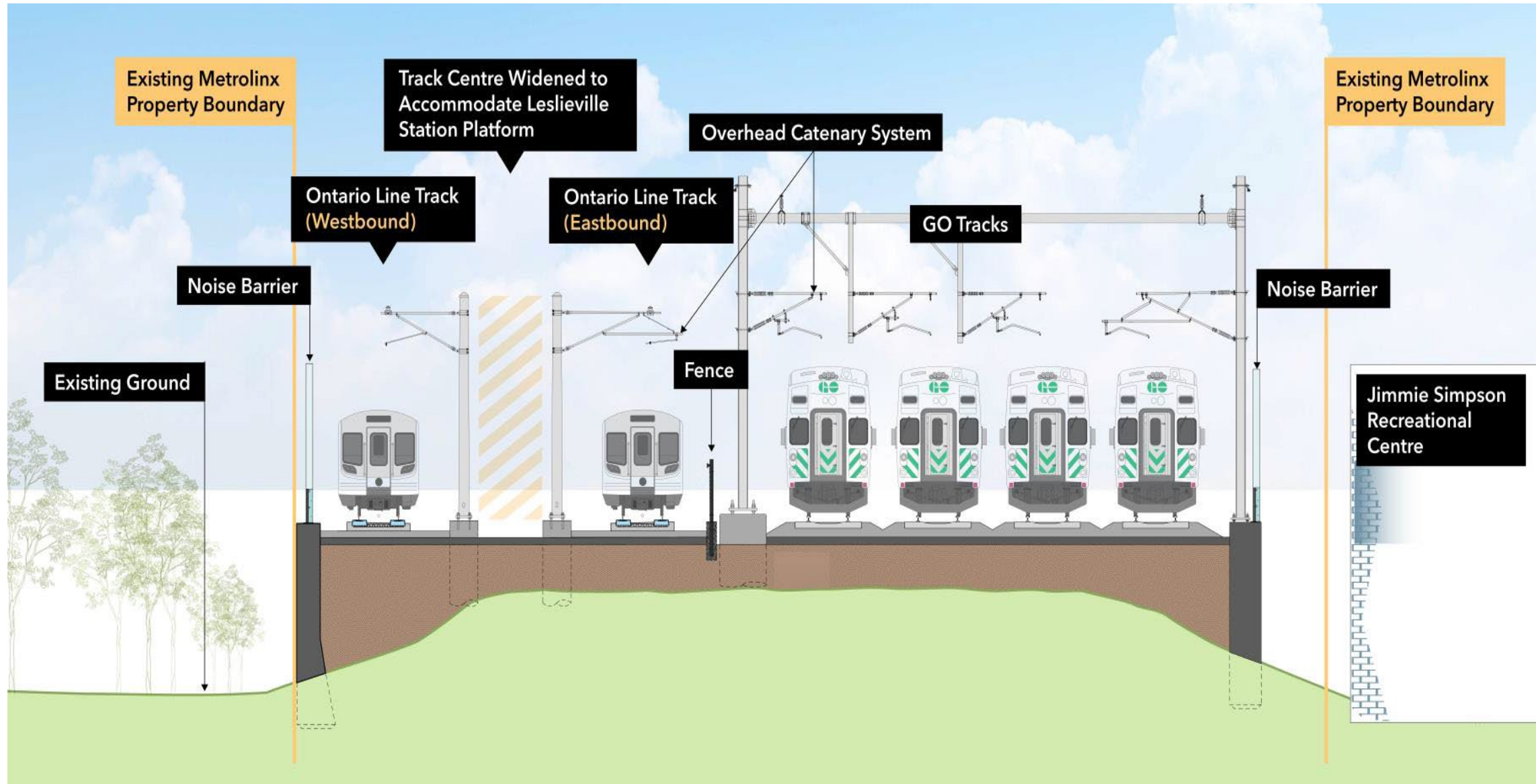


Maintain confidentiality of sensitive issues, when requested by participants.



Commit to equity, diversity and inclusion by supporting the participation of the whole community regardless of race, gender, class, sexuality, age or ability.

Summary of Lakeshore East Joint Corridor Early Works



Construction Liaison Committees (CLC)

Construction Liaison Committees (CLCs) provide open, two-way communication and sharing of information before and during the construction of the Ontario Line project. The CLC will focus on the impacts, issues and areas of concern for resolution related to the Ontario Line construction within the Leslieville/Riverside neighbourhoods. The full Terms of Reference will be shared with the CLC via email.

- The CLC will meet regularly as construction activities get underway
- CLC frequency is flexible, depending on schedules/availability and critical construction work
- Metrolinx will work with stakeholders to develop meeting agendas
- Meetings will last 60-90 minutes, depending on the agenda
- Metrolinx to chair the CLC with support from the project contractor
- Project contractor will participate and lead the construction updates
- Action items/issues/complaints to be logged for resolution

Construction Liaison Committee (CLC)

Community representatives



- Elected officials
- Community groups/residents
- Residents' groups/associations
- Tenant representatives
- BIAs
- Business owners

City of Toronto



Project team members



- Metrolinx—representatives from Subways Sponsors Office, Design Division, Community Engagement, Project Teams and Contractor/Project Co.

Who Does What?



A division of CRH Canada Group Inc.

Responsible for construction delivery, establishing the construction schedule, determining construction plans and the care and control of construction sites.



Contribute subject matter expertise regarding City polices, requirements, permits and procedures.

Ensure key City and community interests are noted and addressed through application design reviews and permits.

Work with partners to minimize negative impacts on residents and the environment.

Monitor construction sites for safety and adherence to City standards and bylaws.



Overarching accountability for entire project, strategy and content approvals, building relationships and understanding needs of the community.

Oversight of construction contractors to ensure compliance with contractual obligations, including work schedules, adherence to acceptable noise levels, traffic management plans and permit conditions.

Construction Liaison Committee Members



Community Members

- Riverside BIA
- Leslieville BIA
- WoodGreen Community Services
- Lakeshore East Community Advisory Committee
 - Shelley Kline
 - Tony Whitaker
- Rosemary Waterston (resident)
- Catherine Riddell (resident)
- Stephen Davies (resident)
- Fontbonne Ministries
- Saulter Street Brewery
- Bonjour Brioche Bakery
- Tabule Restaurant
- Jimmie Simpson Recreation Centre (City of Toronto)

Elected Officials (or designate)

- MP Julie Dabrusin
- MPP Peter Tabuns
- Councillor Paula Fletcher



- Transit Expansion Division
- Parks, Forestry and Recreation
- Transportation Services



- Ontario Line Community Engagement
 - Mark Clancy
 - Katiana Moussa
 - Louis Vatr
- Dufferin Construction
- Project Sponsor
- Capital Projects Group
- Traffic and Transportation
- Other project teams as required

Mitigation | Best Practices



Effective hoarding and signage placement to facilitate detours.

Providing advance notice and alternative route information, as well as effective way-finding.



Thoughtful site plans to ensure business continuity.

Proactive engagement about upcoming plans to learn about potential issues and concerns to consider ahead of any work.



Respond to neighborhood concerns to resolve reasonable complaints in a timely manner.

Coordinate with other major projects and events affecting the neighborhood.



Traffic analysis and modeling to assess impacts and mitigations for all projects in the area.

Outlines all anticipated transportation and transit impacts, ensure ongoing coordination with City, TTC and other projects.

**excludes unplanned emergency work*



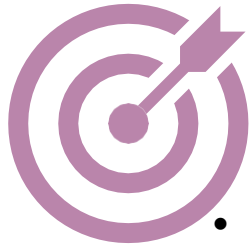
Identify and communicate public or private parking impacts well in advance.

Construction workers will comply with parking bylaws and any project impacts, along with proposed alternatives, will be communicated well in advance.



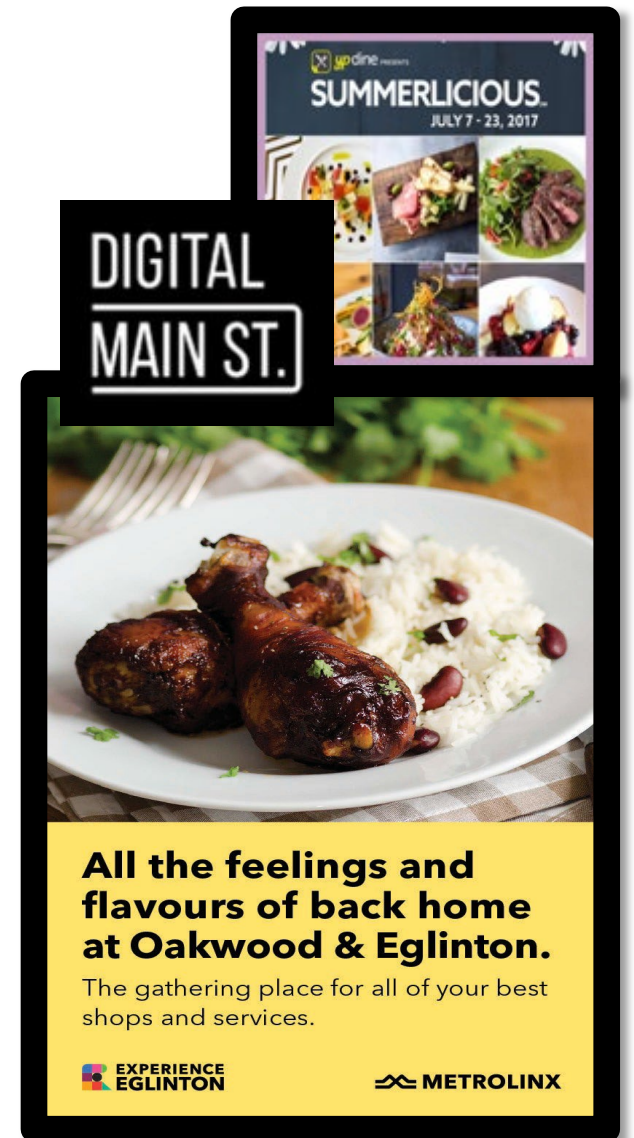
Surveying businesses so programs can be tailored to meet their needs.

Working collaboratively with local businesses to ensure a fulsome understanding of business and customer needs.



Metrolinx is committed to maintaining business continuity during construction by:

- Funding local marketing and events through the **BIA Annual Funding Program** along the Ontario Line alignment.
 - Application guidelines to be provided to BIAs in **May/June 2023**
- Construction plans are developed in collaboration with the City, including emergency services and TTC, to help minimize impacts to traffic, transit, properties, businesses, residents, pedestrians and all road users.
- Collaborate with BIAs and local businesses on ways to help minimize impacts during planned road closures.
- Coordinating cumulative traffic impacts of all projects with the City of Toronto's Transportation Services, TTC and third parties working in the area.
- Maintaining open lines of communication via construction liaison committees (CLC's) and other stakeholder meetings to support planning and advanced notice so issues and challenges are addressed promptly.
- During the Ontario Line station construction phase, ensuring the constructors develop a robust **business supports strategy**, in consultation with the BIAs, which includes **'shop local'** campaigns, marketing and advertising.



Impact Levels

Major Impact



Includes:

- Major intersection work
- Overnight work
- Transit impacts
- Road closures
- Public parking displacement

Medium Impact



Includes:

- Paving
- Long term traffic lane closures
- Work affecting access to private driveways

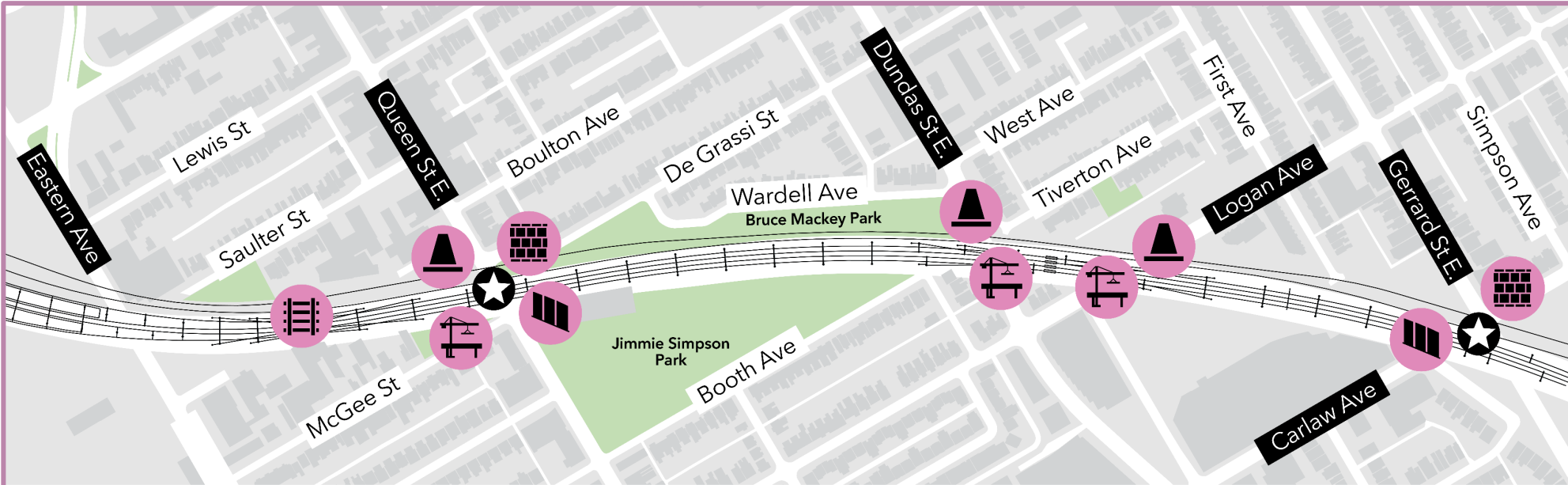
Minor Impact



Includes:

- Short-term traffic lane closures
- Temporary pedestrian detours

Summary of Lakeshore East Joint Corridor Early Works



Lakeshore East Joint Corridor Early Works Scope of Work Summary



Future station



Utility relocations along Queen Street, Dundas Street, Logan Avenue and the surrounding side streets.



Upgrade to the rail corridor, including excavation of the existing embankment, installation of new drainage infrastructure, installation of pre-cast concrete retaining walls and backfill of the corridor.



Removal of existing and construction of new GO Bridges at Queen Street East, Dundas Street East and Logan Avenue. Construction of two new Ontario Line bridges at Dundas and Logan.



Realignment of the existing GO tracks, construction of a fourth GO track, and preparation works for eastbound and westbound Ontario Line tracks.



Construction of noise barrier walls to mitigate the impact of the railway on adjacent properties.



Construction of retaining walls for construction of the future Ontario Line stations: Riverdale-Leslieville station and Gerrard station.



Overview | Bridges Redevelopment

