

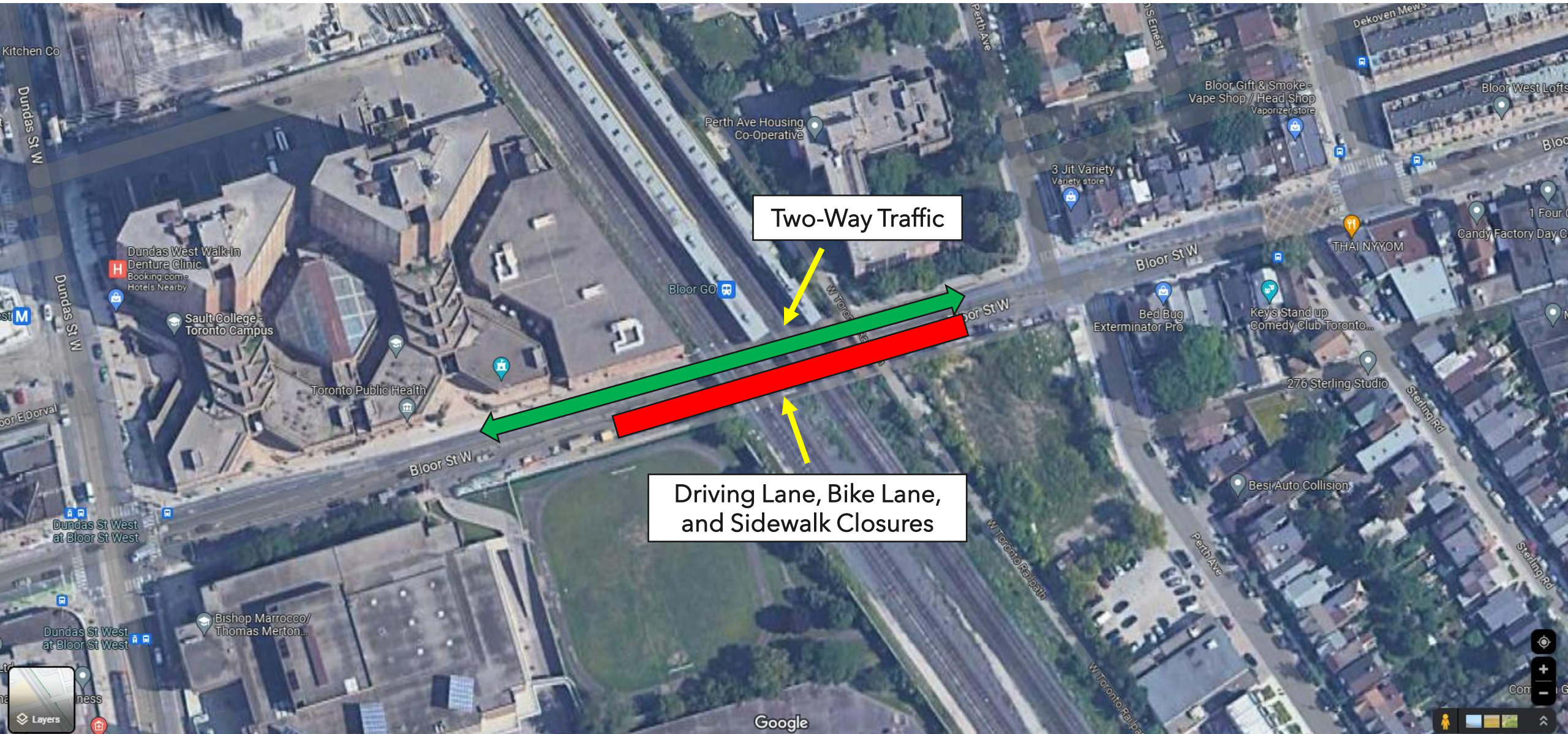
Bloor Street West Rail Bridge Shift

Kitchener Fourth Track Project

GENERAL INFORMATION

- Reason for Work:
 - Build new tracks along the Kitchener Rail Corridor for the [GO Expansion Program](#)
 - To realign the West Toronto Railpath
- Scope of Work:
 - Shift the Bloor Street West bridge to make way for additional track which will allow for more GO service and enhance the West Toronto Rail Path
- Duration of Work:
 - Beginning as early as late July and ending as early as the beginning of October.
 - Dates and details are subject to change.
- How the work will affect the barrier installation on Bloor Street:
 - Traffic will be diverted around and through the barrier installation, **neighbours are encouraged to pay attention to all traffic diversion signs.**
- What to Expect:
 - Daytime work, nighttime work, weekend work and temporary traffic diversions.

PHASE 1: EASTBOUND LANE CLOSURE ON BLOOR STREET (JULY 28 - AUGUST 4)

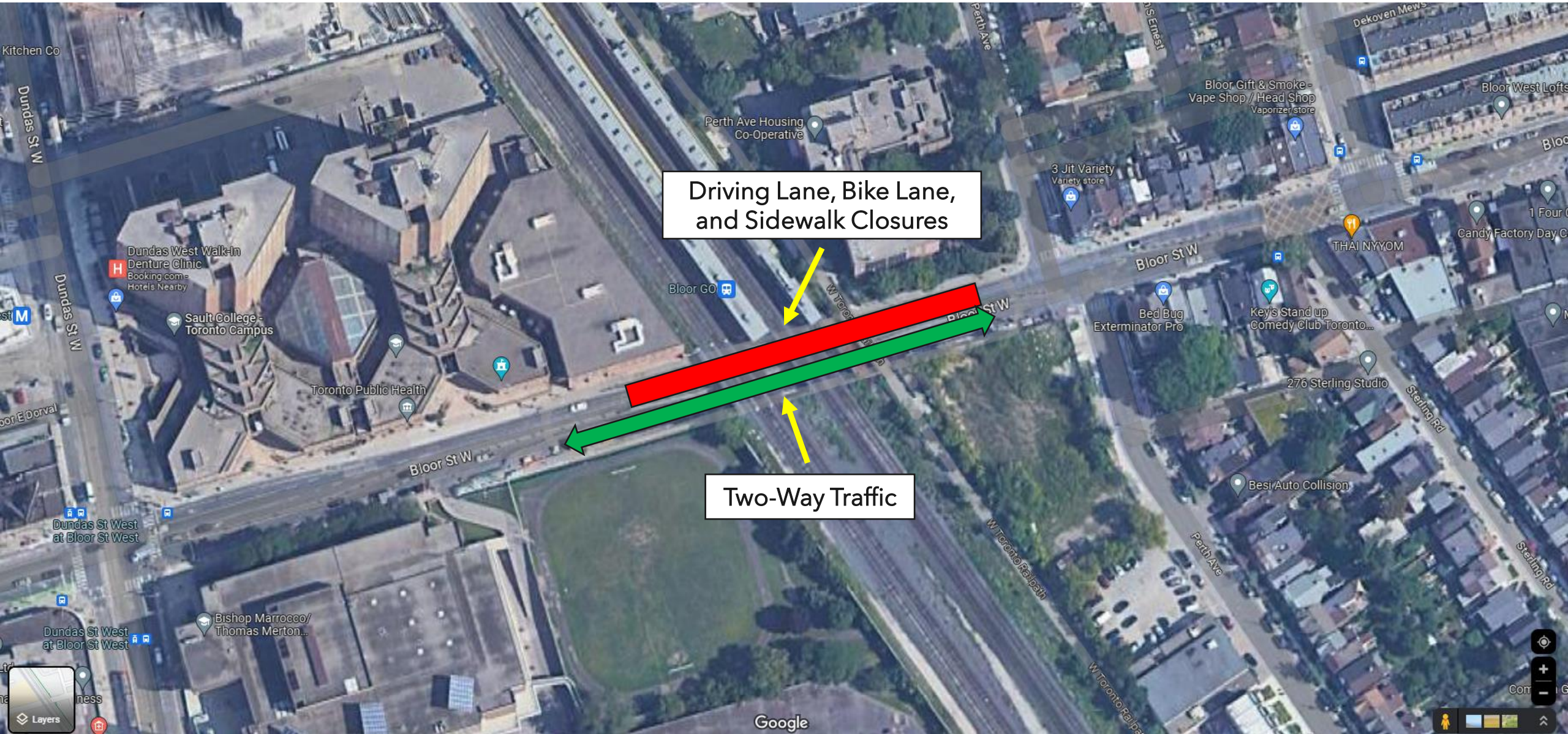


PHASE 1 (JULY 28 - AUGUST 4): WHAT TO EXPECT

- Modification/removal of existing bridge components
- Installation of lifting lugs
- Eastbound driving lane closure
- Eastbound and westbound bike lane closure
- South Bloor St West sidewalk closures
- Single lane traffic each direction
- Night work 9 p.m. - 5 a.m.
- Directional signage will be posted
- Diversions are temporary

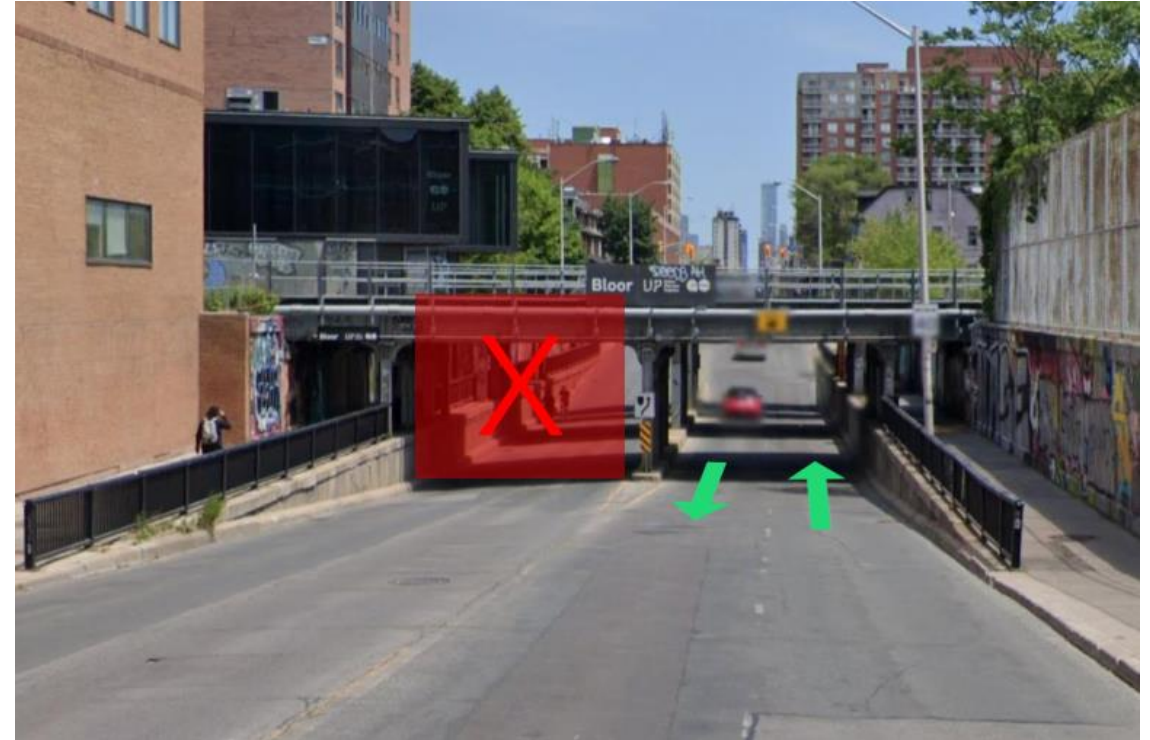


PHASE 2: WESTBOUND LANE CLOSURES ON BLOOR STREET (AUGUST 11 - 18)

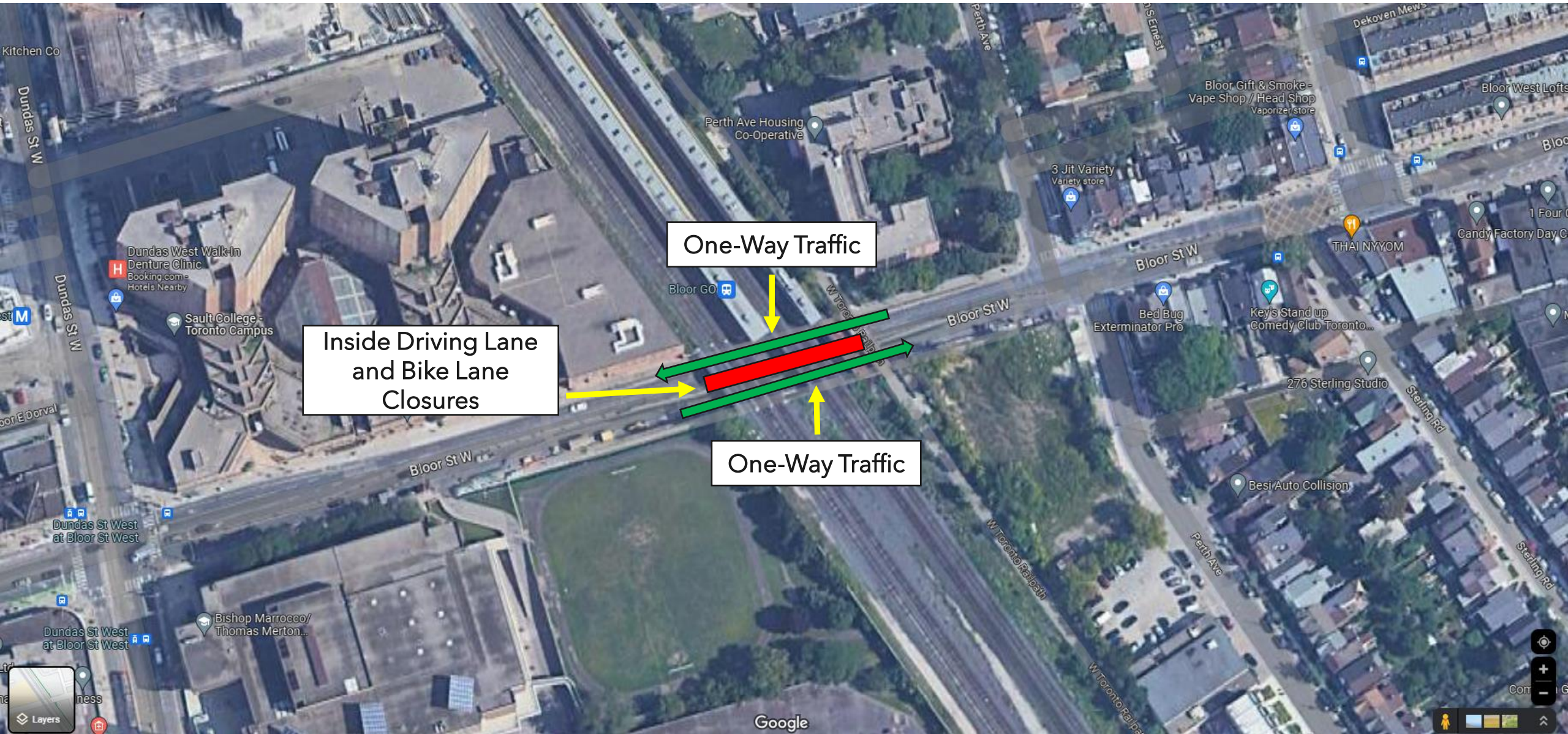


PHASE 2 (AUGUST 11 - 18): WHAT TO EXPECT

- Westbound driving lane closure
- Westbound and eastbound bike lane closure
- North Bloor St West sidewalks closure
- Single lane traffic each direction
- Bloor St entrance to Bloor GO and UP Express closed - Access via Ernest Ave or Dundas St Pick-up/Drop-off (PUDO)
- Directional signage will be posted
- Diversions are temporary

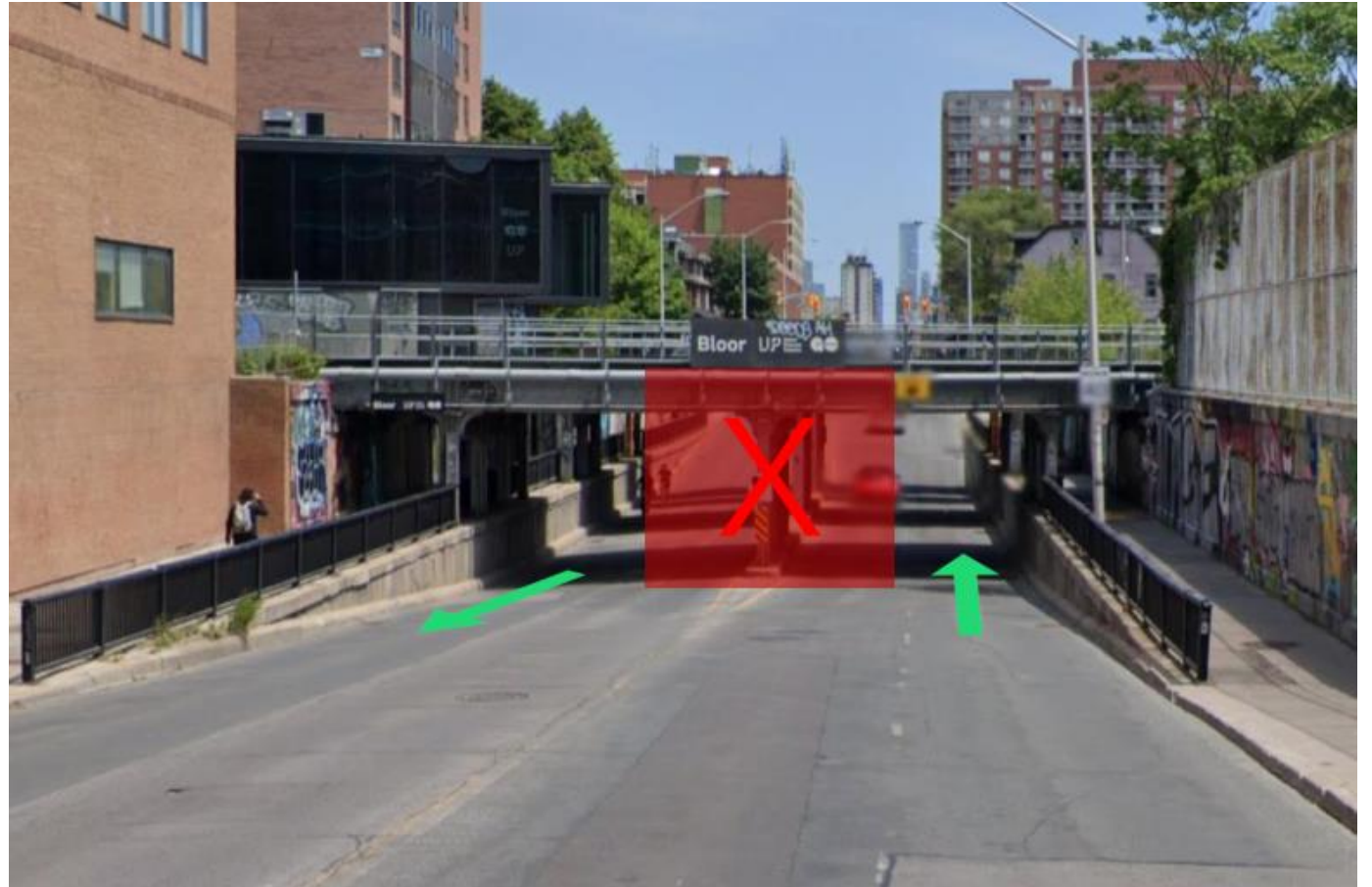


PHASE 3: INSIDE LANE CLOSURE ON BLOOR STREET (AUGUST 25 - OCTOBER 27)

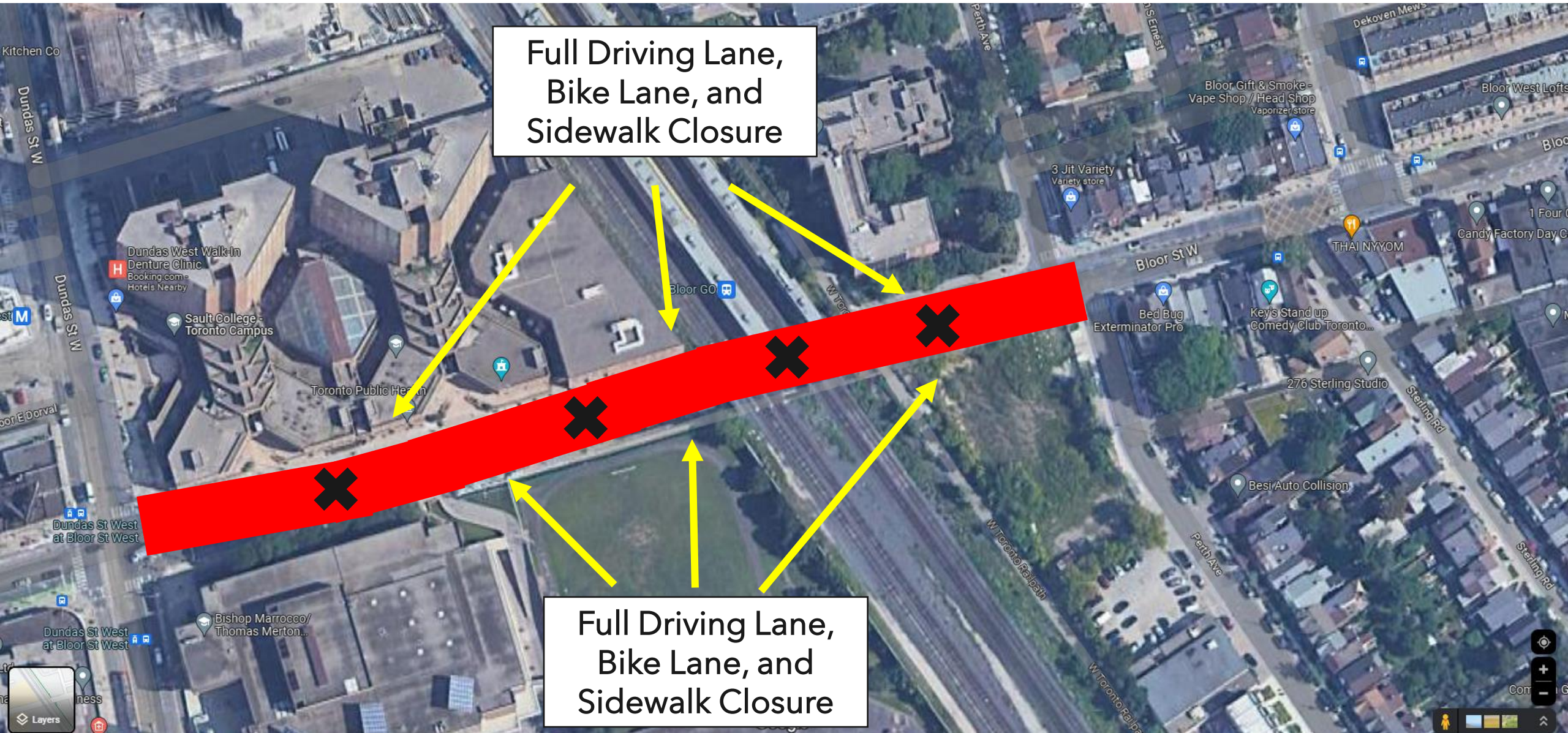


PHASE 3 (AUGUST 25 - OCTOBER 27): WHAT TO EXPECT

- New steel column and beam installation
- Inside driving lane closure
- West and east side bike lane closure
- Single lane traffic each direction
- Night work 9 p.m. - 5 a.m.
- Directional signage will be posted
- Diversions are temporary



PHASE 4: FULL LANE CLOSURE ON BLOOR STREET (NOVEMBER 3 - 6)



Full Driving Lane,
Bike Lane, and
Sidewalk Closure

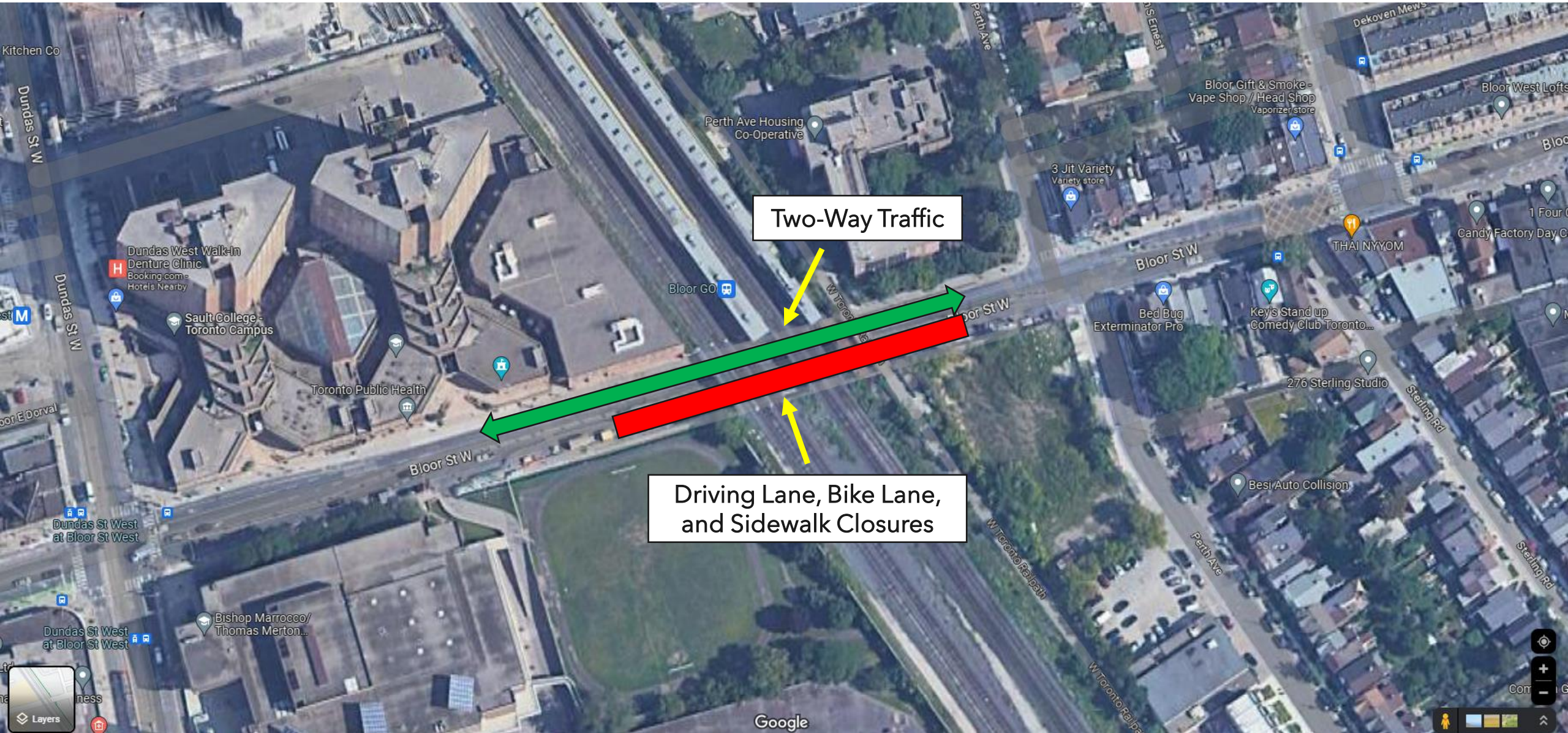
Full Driving Lane,
Bike Lane, and
Sidewalk Closure

PHASE 4 (NOVEMBER 3 - 6): WHAT TO EXPECT

- Full Road Closure
 - Dundas Street to Perth Avenue
 - No vehicle, cyclist or pedestrian access
- Bloor Street entrance to Bloor GO and UP Express closed - Access via Ernest Ave or Dundas St Pick-up/Drop-off (PUDO)
- Night work 9 p.m. - 5 a.m.
- Directional signage will be posted
- Diversions are temporary



PHASE 5: EASTBOUND LANE CLOSURE ON BLOOR STREET (NOVEMBER 6 - 10)

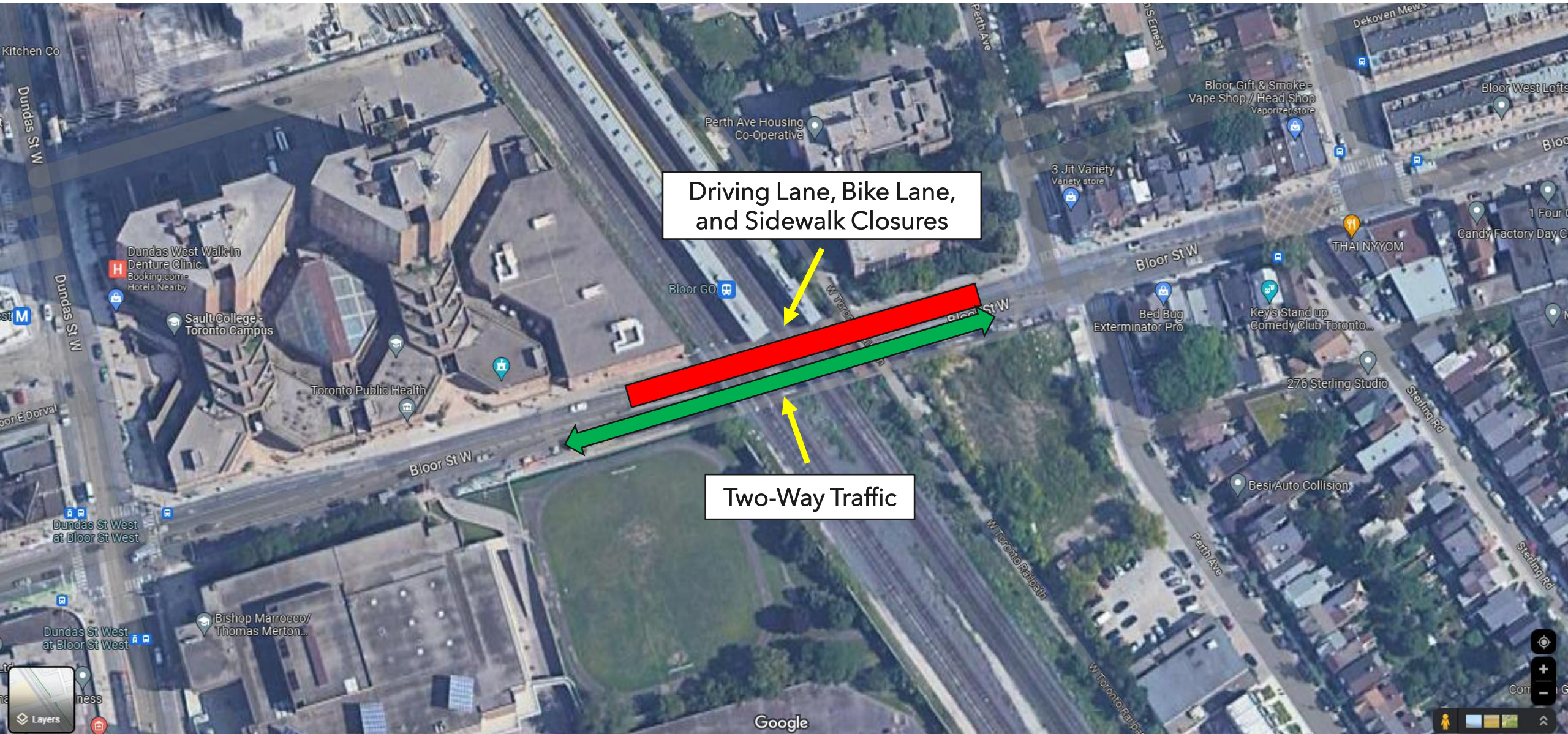


PHASE 5 (NOVEMBER 6 - 10): WHAT TO EXPECT

- New bridge components installation
- Eastbound driving lane closure
- Eastbound and westbound bike lane closure
- South Bloor St West sidewalk closures
- Single lane traffic each direction
- Night work 9 p.m. - 5 a.m.
- Directional signage will be posted
- Diversions are temporary



PHASE 6: WESTBOUND LANE CLOSURE BLOOR STREET (NOVEMBER 10 - 17)



PHASE 6 (NOVEMBER 10 - 17) WHAT TO EXPECT

- Westbound driving lane closure
- Westbound and eastbound bike lane closure
- North Bloor St West sidewalks closure
- Single lane traffic each direction
- Bloor Street entrance to Bloor GO and UP Express closed - Access via Ernest Ave or Dundas St Pick-up/Drop-off (PUDO)
- Night work 9 p.m. to 5 a.m.
- Directional signage will be posted
- Diversions are temporary

