

Appendix B9

Meetings



BOWMANVILLE EXTENSION INFRASTRUCTURE WORKING GROUP MEETING MINUTES

Date September 23, 2021

Time 11:00am to 12:00pm

Location: MS Teams

Name	Organization	Role
Ramesh Jagannathan (RJ)	Region of Durham	Director of Transportation & Field Services
Doug Robertson (DR)	Region of Durham	Project Manager, Transportation Infrastructure
John Presta (JP)	Region of Durham	Director of Environmental Services
Connor Leherbauer (CL)	City of Oshawa	Planner B, Policy, Planning Services
Robert Brezina (RB)	Municipality of Clarington	Capital Works Engineer, Public Works
Paul Atkinson (PA)	Metrolinx	Project Manager, Line Extensions
Jennifer Wong (JW)	Metrolinx	Project Coordinator, Line Extensions
Sudman Khan (SK)	Metrolinx	Project Coordinator, Line Extensions
Tehreem Ashraf (TA)	Metrolinx	Jr Project Coordinator, Line Extensions
Robyn Gravelle (RG)	Metrolinx	Extensions Sponsor
Anthony Boland (AB)	Metrolinx	Municipal Sponsor
Derek Davies (DD)	Metrolinx	Senior Advisor, Transit Oriented Development
Victoria Wodrich (VW)	Metrolinx	Transit Oriented Development Coordinator
Michael Wolczyk (MW)	Stantec	Senior Project Manager, Transportation
Michael Bradley (MB)	Stantec	Project Manager, Transportation
Alex Blasko (AB)	Stantec	Senior Associate, Assessment and Permitting

ITEM	DESCRIPTION	ACTION BY
1.	PA provided a safety brief.	Info
2.	<p>Action Item Review</p> <ul style="list-style-type: none"> • Standing Item - Private land requirement for the project: Some private properties adjacent to CP's rail corridor will be affected. Preliminary property impacts have been shared with the Region of Durham, City of Oshawa, and the Municipality of Clarington. • Preliminary Design has been circulated to stakeholders and comments received. Revisions/responses and additional design details will be provided under 30% detailed design. • Submission dates for 30% and 70% design - See below in section 5 - Project Schedule. 	<p>Info</p> <p>Mx/Stantec</p> <p>Info</p>
3.	<p>TPAP/EPR Addendum</p> <ul style="list-style-type: none"> • Field work <ul style="list-style-type: none"> ◦ Tree Inventory field work has been completed; Report is underway ◦ Majority of natural environment field work has been completed; Report is underway • Cultural Heritage Evaluation Reports to commence shortly • Preparation of draft EPR Addendum is underway • Draft 90% EPR Addendum submission is expected in April 2022 	<p>Info</p> <p>Info</p> <p>Info</p> <p>Info</p> <p>Info</p>
4.	<p>Project Updates</p> <ul style="list-style-type: none"> • Fieldwork: <ul style="list-style-type: none"> ◦ Topographical survey work occurring in September/October. ◦ Geotechnical program is currently on hold. ◦ Utility investigations to commence shortly. • Preliminary Design was completed in August 2021. • 30% Detailed Design is underway. • Road Closure Studies - Data collection is underway. Anticipated submission in early November. • Albert St: Decision to be made for scope. Separate meeting to be scheduled with Region of Durham and City of Oshawa. 	<p>Info</p> <p>Info</p> <p>Info</p> <p>Info</p> <p>Info</p> <p>Stantec</p> <p>Mx</p>
5.	<p>Project Schedule</p> <ul style="list-style-type: none"> • EA activities are ongoing throughout 2021/2022. • Draft 90% EPR Addendum submission is expected in April 2022. • 30% Detailed Design submission anticipated for January 2022. • 70% Detailed Design submission anticipated for August 2022. 	<p>Info</p> <p>Info</p> <p>Info</p> <p>Info</p>

7.	<p>Other Business/Questions</p> <ul style="list-style-type: none"> CL inquired if the 500 Howard St property is being reviewed under the Cultural Heritage Evaluation Reports for bridges. Response from Mx: Environmental/heritage due diligence activities for the property are currently progressing in parallel and carried out by another Mx team. Metrolinx contact will be provided to the City for discussion regarding the property. JP inquired if Stantec/Metrolinx has received any information regarding underground infrastructure/utilities. Response from Stantec: Meeting was held with Region on Sept 22 for utility coordination. Region has provided the utility information, and further discussions are ongoing. DR inquired about any progress on negotiations with CP. Response from Mx: Discussions are ongoing with CP. CP is to provide first draft of Construction Agreement, as well as comments for Preliminary Design and 2nd mainline study. DR inquired about Mx response on the cost sharing proposal for Bloor Street Grade Separation. Response from Mx: Senior Management is reviewing the proposal. Mx will provide response in the coming weeks. DR requested preliminary drawings for Stevenson & Harmony Rd. Response from Mx: Mx will provide the drawings. RB inquired about the closure requirements for the farm crossing east of Green Road. Response from Mx: Mx will discuss with CP and provide feedback to the Municipality. 	<p>Mx</p> <p>Info</p> <p>Info</p> <p>Mx</p> <p>Mx</p> <p>Mx</p>
----	---	---

If there are any comments or inaccuracies, please contact Tehreem Ashraf.

Metrolinx/Ministry of Heritage, Sport, Tourism and Culture Industries
Quarterly Meeting

Tuesday May 3, 2022

10:00am – 12:00pm

Virtual – Microsoft Teams

Attendees:

James Hamilton (MHSTCI)

Karla Barboza (MHSTCI)

Rosi Zirger (MHSTCI)

Laura Hatcher (MHSTCI) [agenda items 1-2]

Katie Bright (Mx)

Lindsay Prihoda (Mx)

Laura Filice (Mx)

Thomas Wicks (Mx)

Rachel Afonso (Mx)

Regrets:

None

Item	Description	Action By
2.0	EPR Addendum – Oshawa to Bowmanville Rail Expansion <ul style="list-style-type: none"> Mx provided an overview of the Oshawa to Bowmanville Rail Expansion project. The objective is to extend the existing GO Lakeshore East Rail Service from Oshawa to Bowmanville. The original TPAP was completed in 2011 and significant changes to the design triggered an addendum. The following studies have been completed that are relevant to MHSTCI: <ul style="list-style-type: none"> Cultural Heritage Report (CHR); Cultural Heritage Evaluations and Recommendations Report (CHER) – Albert Street Bridge; Cultural Heritage Evaluations and Recommendations Report (CHER) – Farewell Street Bridge; and Stage 1 Archaeological Assessment (AA). All of the above reports have been circulated to Indigenous Nations. They will also be included as appendices to the draft 90% EPR. Stage 2 AA fieldwork is planned to begin Spring/Summer 2022. Huron Wendat Nation and Curve Lake First Nation have expressed interest in participating in Stage 2 AA fieldwork. Mx will be coordinating their involvement. CHERs: <ul style="list-style-type: none"> The CHERs for Albert Street Bridge and Farewell Street Bridge were reviewed by the Metrolinx Heritage Committee (MHC) on April 1, 2022. Both were confirmed to contain Cultural Heritage Value or Interest (CHVI). Farewell Street Bridge: 9/06 – Planned for reconstruction (demolished and re-built within the same location and footprint). 	

	<ul style="list-style-type: none"> ○ Albert Street Bridge: 9/06 – Planned for reconstruction. Mx is currently working with the Municipality to determine next steps for the bridge. A formal decision should be made end of May 2022. ○ Both bridges are currently owned and maintained by CP. ○ There is potential an agreement will be developed with CP for MX to manage/control portions of the Albert St and Farewell St Bridges. ● 500 Howard: <ul style="list-style-type: none"> ○ This property located on the footprint of the proposed Ritson GO Station site, but the design impacts to cultural heritage aspects will be determined as design progresses following the TPAP for the Oshawa to Bowmanville Project. Associated commitments to future work will be included with specific language regarding addressing heritage and related obligations including Minister's Consent. ○ The EPR Addendum will assess general impacts at the property level focusing on how the GO Station operation will affect adjacent properties and environmental features. ○ 500 Howard Street and the construction of Ritson GO Station (and all other stations) will be designed and built by a partner through the Transit Oriented Communities (TOC) program in compliance with Metrolinx requirements including environmental commitments and applicable law. ● EPR Addendum Schedule was presented. Slide deck is attached for reference. ● MHSTCI advised that they need to review the technical studies to conduct a meaningful review of the draft 90% EPR Addendum. ● Mx clarified that the technical reports will be included as appendices to the draft 90% EPR Addendum that will be circulated to MHSTCI and other review agencies on May 10, 2022. The technical reports are currently in draft form, and will be updated to reflect comments from Indigenous Nations for the Final EPR Addendum. ● MHSTCI noted that the review timeline for the technical reports outlined within the slide deck is reasonable prior to the Notice of EPR Addendum. <p>Action: Mx to send Oshawa to Bowmanville Rail Expansion slide deck to MHSTCI [<i>Post-Meeting Note: Sent by email on May 10, 2022</i>]</p>	
--	---	--

Mx

Event Summary: Touch a Truck (Tribute Communities Centre) Friday, August 26th, 2022 from 4 to 8pm

ATTENDEES

William Freeman King- Community Relations and Issues Specialist, Durham Region
Adrian Martins - Community Relations and Issues Specialist, Toronto East

Number of visitors engaged: 400

Set up:

- Metrolinx branded Buses and Train cut-outs
- Colouring Books
- GO Expansion postcards
- Newsletter signup sheet
- Metrolinx branded hats, frisbees, pens and umbrellas
- GO Bear stickers and tattoos

PRE-EVENT SAFETY REVIEW

Low Risk: Open corridor- setting, no issues

OVERVIEW

Through outreach with the Tribute Communities Centre, the Durham Community Engagement Team attended the 8th annual “**Touch a Truck**” event in Oshawa. The free event brought out families in the region and gave the children a chance to engage with over 40+ vehicles in support of **Big Brothers Big Sisters of South-West Durham**. As participants, our contribution to the event was a Double Decker GO Bus alongside our friendly Transit Operator, Chris.



The turn out for the event was amazing as we had over 400 interactions! Many of the visitors were excited about presence of a double decker bus as they haven't ridden since pre COVID. Our Metrolinx branded items also brought a crowd to our table, we even ran out of a full box of cardboard train models.

While the children were exploring the GO bus, this gave us an opportunity to share more information on upcoming projects with the parents. The news of the GO Expansion and Bowmanville Extension gained interest as visitors expressed their issues about the suspension of the express trains. The update on the frequency of the service on the line brought excitement to the region as this is the progress they have been waiting for.

A teachable moment was when a parent with a child who had a disability questioned why our accessibility ramp was not lowered for the whole event. We explained due to the size of the space we were given; it would cause congestion on the sidewalk.

Overall the tone event was very positive, and attendees are excited about the possibility of us attending next year.

NOTABLE COMMENTS/ QUESTION THEMES

- "We've been waiting for faster service for a long time!"
- "I like how the Bowmanville line will be closer to the residents"
- The ease of ridership changing between different transit lines

NOTABLE QUESTIONS

- "How long will it take to finish the extension to Bowmanville?"
- "Why don't we leave the accessibility ramp down during events?"
- "Do you allow tours of the Whitby Rail Maintenance facility?"

NEXT STEP:

- Plan future events with the Tribute Communities Centre

LEARNINGS:

- Inquire about GO Bus space for next event, need enough space for the accessibility ramp.
- Increase amount of cut-out trains for event, great interactive tool for children. Some adults see them as collectors' items.

TO NE

10 (Positive Overall, friendly encounters with public)

Event Summary: Bowmanville Applefest in the Historic Downtown Bowmanville

Saturday, October 15th, 2022

Pop-up from 9am – 5pm

ATTENDEES

William Freeman King, Community Relations and Issues Specialist, Durham Region

Justin Klimkait, Community Relations and Issues Specialist, Durham Region

Number of visitors engaged: 220

Number of new subscribers: 12

Set up:

- Table
- Bowmanville Postcards
- "How to Use Presto" cards
- GO Expansion postcards
- Newsletter signup sheet
- Metrolinx branded pens, umbrellas, hats, slap bracelets and frisbees

PRE-EVENT SAFETY REVIEW

Low Risk: Open corridor- setting, Great spacing between vendors, Tent weights applied as event was windy throughout the day, multiple exits, no issues

OVERVIEW

The Durham Community Engagement Team participated in the highly anticipated event, Applefest. The annual festival, held in the historic downtown Bowmanville, celebrated all things apple and drew out a very large crowd. Applefest spanned over 4 blocks along King St, giving visitors a chance to interact with local shop vendors and candidates in the upcoming municipal election.

Our table, located on Temperance St, gained a lot of interest at the event. The news of the Bowmanville extension excited the visitors as many have waited a long time for the project. The interactions at the table were mixed regarding the plans as some visitors have been anticipating the completion for a very long time. It was great to have meaningful conversations as it gave us the opportunity to reassure the community that project has been progressing and refer them to resources such as our newsletter for updates.

Another issue that was brought to us was the lack of attendants at our stations. This concern came from multiple residents, some with and without accessibility related barriers. One of the visitors advised that they had stopped using transit altogether due to that reason alone, and others commented how the process has become very confusing and daunting without them present. Some visitors also commented that they found it confusing to plan trips multiple bus route changes have been made during COVID. The specific bus routes that were mentioned multiple times were the 90 & 91 (express bus, connecting to the express train), which a visitor mentioned it now takes them 2 ½ hours to commute to Union station.

Overall the turnout for the event was amazing as the event drew in people from all areas of Durham. It was evident that the Bowmanville Extension is much needed for the region as we saw the public cannot wait for it to open.

KEY QUESTION THEMES

- Where to find GO Train and GO Bus schedules
- How to use and load the PRESTO Card
- Timelines on GO Expansion and Bowmanville Extension
- The ease of transfers between different transit lines

NEXT STEP:

- Plan future events with the Bowmanville BIA
- Inquire about additional Metrolinx branded items for interactions

LEARNINGS:

- The importance of station attendants for seniors and students
- Bring "how to use PRESTO" guides as reference point for inquiries

8 TONE

8 (Positive Overall, friendly encounters with public)



BOWMANVILLE RAIL EXPANSION – NOISE/VIBRATION TECHNICAL REPORT COMMENT-RESPONSE DISCUSSION

Date: October 20, 2022

Time: 2:00 to 3:30 p.m.

Location: Teams Online Meeting

Attendees		
Name	Organization	Role
Anne Cameron	Ministry of the Environment, Conservation and Parks	Project Officer
Cindy Batista	Ministry of the Environment, Conservation and Parks	Special Project Officer
Kevin Smith	Ministry of the Environment, Conservation and Parks	Senior Noise Engineer
Header Merza	Ministry of the Environment, Conservation and Parks	Senior Noise Engineer
Laura Filice	Metrolinx	Environmental Project Manager, Environmental Programs & Assessment
Rachel Afonso	Metrolinx	Junior Project Coordinator, Environmental Programs and Assessment
Alex Blasko	Stantec Consulting Ltd.	Environmental Lead
Lindsay Frith	Stantec Consulting Ltd.	Environmental Project Manager
Mohammed Salim	Stantec Consulting Ltd.	Noise and Vibration Technical Lead
Samuel Arnold	Stantec Consulting Ltd.	Noise and Vibration Technical Support

ITEM	DESCRIPTION	ACTION BY
1.	Introductions	Info
2.	Purpose of Meeting <ul style="list-style-type: none"> Review the two sets of comments provided by the Ministry of the Environment, Conservation and Parks (MECP) on the Noise and Vibration Technical Report prepared for the Oshawa to Bowmanville Rail Service Expansion (the Project) Environmental Project Report. MECP explained the comments added below Stantec's responses to the June 17, 2022 letter are the same as those in the October 3, 2022 letter. 	Info
3.	<p><i>Comment #1: Table 4.1: ninety (90) points of reception were selected to represent the existing noise and vibration sensitive buildings along the noted GO Transit rail corridor. Vacant lots (if present) need to be included as future points of reception for stationary sources (proposed GO Stations), while vacant lands with municipally approved development plans (if present) need to be included as points of reception for transportation sources (GO Transit rail corridor).</i></p> <ul style="list-style-type: none"> MECP requested that Stantec review development applications to confirm if any vacant lots have approved applications. If so, these should be included as receptors. MECP recommended Stantec connect with the municipalities to obtain the most current development application information, so that mitigation considerations for the project account for potential future development. MECP confirmed any vacant lot with approved development plans should be considered in the noise/vibration assessment; if no development is proposed on a vacant lot, then this should be documented as well. Stantec confirmed vacant lots can be included in an updated noise/vibration assessment. 	Stantec to update the report with approved development applications and re-confirm if any vacant lots should be considered as receptors.
4.	<p><i>Comment #2: Section 4.3.1 (Page 35): the following statement is made "CADNA/A implements the Traffic Noise Model (TNM) and US FTA methods for road noise and rail noise, respectively. The TNM and FTA implementations in CADNA/A are used in conjunction with Ontario Road Noise Analysis Method for Environment and Transportation (ORNAMENT) and Sound from Trains Environmental Analysis Method (STEAM) approaches. Reference sound levels for road and rail sources are obtained from ORNAMENT and STEAM, respectively and are used in the model". These noise prediction methods are incorrect. The use of these hybrid noise prediction methods is not acceptable to MECP. In accordance with MECP guidelines, for road traffic noise predictions, the ORNAMENT or TNM algorithm / STAMSON or TNM version 3.1 software should be used. For rail traffic noise predictions, the STEAM or FTA algorithm / STAMSON / FTA (or CADNA/A implementation of FTA) software should be used.</i></p> <ul style="list-style-type: none"> MECP explained that, for another project, SLR Consulting undertook a sensitivity analysis for combination models. The results showed a 0.1 to 0.2 dB difference when using ORNAMENT/STAMSON vs. CADNA/A. MECP does not want models combined. Stantec noted this approach had been used previously for assessments. MECP requested the name of the Project and reviewer. <ul style="list-style-type: none"> <i>Post-meeting note: Stantec confirmed the combination of CADNA/A and ORNAMENT were used in the Stouffville Rail Corridor Grade Separations Project and the Scarborough Junction Grade Separation Project, both completed in 2021. The MECP reviewer was Header Merza.</i> MECP confirmed the Draft NCP 306 guideline - "Updates to Noise Methods for Assessing Road and Rail" (draft posted in December 2021) provide 	

ITEM	DESCRIPTION	ACTION BY
	<p>direction regarding the use of modelling for rail and road.</p> <ul style="list-style-type: none"> ○ The Draft NCP 306 guidelines were released following the initiation of the Noise/Vibration Technical Report. • MECP reiterated its stance to not mix processes; recommendation is to keep ORNAMENT in STAMSON or use TMN 3.1 on its own for the road assessment. 	Stantec to revise the assessment in accordance with the Draft MECP NCP 306.
5.	<p><i>Comment #3: Section 4.3.1 (Page 39) & Section 6.3.2 (Page 125): rail squeal noise should be considered in the noise analysis at locations prone to this type of noise (e.g., when rail tracks change direction from north / south to east / west). In accordance with Publication NPC-104, an adjustment of 5 dB should have been added to the modelled train noise where rail squeal noise is anticipated. Provide confirmation in the final noise and vibration report that rail squeal noise is not anticipated on this rail corridor. Otherwise, include rail squeal noise in the report as per comment above.</i></p> <p><i>With regards to existing sound barriers used in the noise analysis, were these barriers field inspected for their extents, lengths, heights, mass surface density, and presence / absence of gaps / cracks? Conduct field inspection of the existing sound barriers before the preparation of the final noise report. Alternatively, include a recommendation in the final noise report that during the detailed design phase of the project, existing sound barriers used in the noise analysis, will be field inspected for their extents, lengths, heights, mass surface density, and presence / absence of gaps / cracks.</i></p> <ul style="list-style-type: none"> • Stantec confirmed rail squeal is anticipated at the B1 GO Station, and is not anticipated elsewhere. • MECP requested that if rail squeal is not anticipated elsewhere along the alignment, then this should be documented in the report. • MECP suggested other potential locations be considered and suggested the calculations do not have to be re-done, instead a 5 dB penalty can be added. • MECP questioned if Stantec completed a visual assessment of the existing noise barriers. • Stantec confirmed that a visual assessment was not undertaken for all existing noise barriers • MECP recommended a commitment be added to the report to undertake an inspection of the existing noise barriers during detailed design. 	<p>Stantec to review areas where rail squeal is anticipated update the locations if required in the report, and confirm areas where squeal is not anticipated.</p> <p>Stantec will remove the existing subdivision noise barriers that are not effective from the model - MECP does not accept bright-zones.</p> <p>Stantec to include a commitment to undertake an inspection of any existing noise barriers, that are considered in the assessment, during detailed design.</p>
6.	<p><i>Comment #4: Section 4.3.3 (Page 40) and Tables 6.7 & 6.13: assessed noise sources at the four proposed GO Stations included emergency power generator, idling buses and bus loop. Moving buses (accelerating / decelerating), public announcement systems and HVAC equipment could be significant noise sources within the noted four GO Stations. If these noise sources were assessed and found out to be insignificant sources, then a statement should be included in the noise report confirming such a finding.</i></p> <p><i>With regards to Tables 6.7 & 6.13, the predicted GO Stations B1 (34 to 39 dBA) & B3 (28 to 31 dBA) (Table 6.7) and Go Stations B1 (34 to 39 dBA), B3 (28 to 31 dBA) & B4 (32 to 37 dBA) (Table 6.13) sound levels are questionably very low. Provide explanations to justify these very low predicted sound levels.</i></p> <ul style="list-style-type: none"> • MECP questioned whether other sources of noise such as buses, public announcements, HVAC, etc., were considered in the assessment. <ul style="list-style-type: none"> ○ Stantec confirmed the bus loops and bus idling were included in the assessment. Other sources such as heating, ventilation and air-conditioning system, exhaust fans and boilers at the GO Stations were considered to be insignificant sources of noise as they are 	

ITEM	DESCRIPTION	ACTION BY
	<p>quieter than the significant noise sources such as bus loops and idling buses.</p> <ul style="list-style-type: none"> MECP asked that if sources haven't been considered, then they should be; if they were considered and found to be negligible, then that should be documented in the report. MECP suggested Stantec visit an existing GO Station to observe what the typical noise levels would be. MECP noted some sound levels in Tables 6.7 and 6.13 seem very low and should be justified. A note should be added to these tables regarding why sound levels are low. <ul style="list-style-type: none"> Stantec noted bus routes and bus idling were modelled for the GO Stations, which are expected to be the main noise contributors; other details regarding the GO Station design are not currently available. Stantec confirmed Table 6.13 represents the mitigated scenario; existing noise barriers at some locations and setback distance resulted in lower sound levels. 	<p>Stantec to consider other noise sources in the assessment.</p> <p>Stantec to include an explanatory note with Tables 6.7 and 6.13 for low sound levels.</p>
7.	<p><i>Comment #5: Figures 5.1.1 to 5.1.8: the number of noise and vibration monitoring locations is questionably low and thus, may not be representative of all noise and vibration sensitive properties. Additional noise and vibration monitoring locations are needed to better represent the noise and vibration sensitive buildings as well as the proposed GO Stations.</i></p> <p><i>Six noise monitoring locations and two vibration monitoring locations cannot be considered representative of the baseline conditions within the Study Area (21 km long GO Transit rail corridor).</i></p> <p><i>Include a recommendation in the final noise and vibration report that during the detailed design phase of the project, additional noise and vibration monitoring locations will be selected to provide wider and more comprehensive representation of the background (ambient) sound and vibration levels at all noise and vibration sensitive buildings along the GO Transit rail corridor and around the proposed GO Stations.</i></p> <ul style="list-style-type: none"> MECP does not believe that selecting only two locations for vibration monitoring over a 21 km rail corridor is considered representative. Stantec's opinion is that two vibration monitoring locations (i.e., south of the existing track in Oshawa and north of the existing track in Bowmanville) are considered sufficient for this stage of the Project. MECP suggested a commitment should be added to the report for additional noise/vibration monitoring during detailed design. Stantec noted the new track is added to the south and not to the north of the existing rail corridor. MECP requested the rationale for considering only the south side of the rail corridor be added to the report. 	<p>Stantec to include a commitment to undertake additional noise/vibration monitoring during detailed design.</p> <p>Stantec to provide a rationale in the report for considering only the south side of the rail corridor (Oshawa area).</p>
8.	<p><i>Comment #6: Tables 5.2, 5.3 & 5.4: the reported baseline sound levels at measurement locations NM03, NM04 and NM05 (Table 5.2), at prediction locations NM02, NM03, NM04 and NM05 (Table 5.3), and at thirty-two (32) prediction locations where the pre-project sound level at the OLA is equal to or greater than 65 dBA (Table 5.4) are questionably very high. These sound levels are very excessive and are highly likely tend to generate noise complaints. Indicate if the predicted excessive sound levels listed in Tables 5.3 and 5.4 were validated in the field via attended noise measurements. If not, it is recommended that these predicted excessive sound levels</i></p>	

ITEM	DESCRIPTION	ACTION BY
	<p><i>be checked in the field via attended noise measurements.</i></p> <p><i>With regards to Table 5.3, the reported differences between the measured and predicted sound levels are significant at five locations (NM01, NM02, NM03, NM04 and NM06 - range from 4 to 8 dBA). This conflicts with the following statement in section 5.1.3 on page 54 "Based on these results, the Project noise model and the procedure followed for this assessment are considered appropriate for the purpose of determining Project sound levels". Such significant differences cast a doubt on the accuracy of the measured / predicted project sound levels. The above noted statement made in Section 5.1.3 needs to be revised to acknowledge these differences / discrepancies.</i></p> <ul style="list-style-type: none"> • MECP noted that sound levels of 65 dBA tend to generate complaints and asked if field measurements were taken at locations where 65 dBA was predicted. • Stantec confirmed access to these locations was not available but did stand in proximity to some of the locations and noted the traffic noise is high. In some cases, the dBA was higher than what was modelled. • MECP recommended a commitment be included in the report for sound level measurements to be taken at several locations during detailed design. • Stantec noted that sound measurements were taken at six locations and access to some of the Outdoor Living Areas was not feasible. • MECP suggest a note be added to Table 5.4 that Outdoor Living Areas with sound levels >65 dBA require individual access for sound level measurements which was not feasible at the time of the assessment. • For the second part of the comment, MECP requested an explanation be provided regarding why some measured sound levels are higher than predicted. • Stantec suggested a new table could be added to describe each location and provide better context. 	<p>Stantec to include a commitment in the report to undertake attended noise measurements in the areas where excessive sound levels are predicted (i.e., in Tables 5.3 and 5.4).</p> <p>Stantec to provide a rationale in the report as to why some measured sound levels are higher than predicted.</p>
9.	<p><i>Comment #7: 1. Table 5.5: Eighty (80) receptor locations are setback less than 75 metres from the GO Transit rail tracks. The use of two vibration monitoring locations (VM01 & VM02) to represent eighty (80) receptor locations is questionably very low and cannot be considered representative of the baseline conditions along the 21 km long GO Transit rail corridor.</i></p> <p><i>Include a recommendation in the final noise and vibration report that during the detailed design phase of the project, additional vibration monitoring locations will be selected to provide adequate representation of the background (ambient) vibration levels at all vibration sensitive buildings within 75 metres from the nearest rail track of the GO Transit rail corridor.</i></p> <ul style="list-style-type: none"> • MECP noted this comment is very similar to Comment #5. • MECP suggested Stantec review the recommendations / commitments in the report and revise to include additional vibration monitoring. 	<p>Stantec to include a commitment to undertake additional vibration monitoring during detailed design.</p>
10.	<p><i>Comment #8: Tables 6.6 & 6.12: there are seventy-one (71) (Table 6.6) and sixty-two (62) (Table 6.12) Outdoor Living Area (OLA) locations with predicted project daytime sound levels that are more than 60 dBA, the maximum allowable outdoor sound level criterion (ref. Part C in Publication NPC-300). Are these excessive OLA sound levels due to the GO Transit rail service or are due to the CP rail traffic / Highway 401 vehicular traffic? What is the contribution of GO Transit rail service to these project daytime sound levels? Tables 6.6 and 6.12 need to be revised to include the contribution of the GO Transit rail service to the project sound levels.</i></p>	<p>Stantec to update Tables 6.6 and 6.12 in the report to</p>

ITEM	DESCRIPTION	ACTION BY
	<ul style="list-style-type: none"> MECP recommended adding a new column in Tables 6.6 and 6.12 for the contributions of the GO trains to better indicate if the sound levels are due to the GO train or other sources. 	specifically include the lone contributions of the GO trains.
11.	<p><i>Comment #9: Appendix B, Table 2: with regards to the listed residential fences, the listed height of 2 metres is not acoustically effective to shield the GO trains from the adjacent houses. It should be noted that acoustic shielding due to bright-zone sound barriers is not acceptable to MECP. Therefore, sound barriers noise reductions of less than 5 dBA should be set to zero.</i></p> <ul style="list-style-type: none"> MECP noted that a 2 m high sound barrier will not shield trains and MECP does not accept bright-zones. MECP recommended that sound barriers showing less than 5 dBA attenuation should be removed. MECP accepts noise attenuation of 5 dBA and higher, even if the sound barrier is existing. Stantec noted that in some locations, the track is below grade so the sound barrier could be higher, when the train height plus the wheel noise was modelled. MECP recommended reviewing existing sound barrier calculations and if the difference is less than 5 dBA (with vs without the barrier), then the sound barrier should not be included in the calculations. Stantec noted there are two sources of noise from the GO trains – the wheel and engine noise. MECP confirmed if the engine is visible to the residences, then the sound barrier is not sufficient. MECP confirmed the sound barriers can be removed from the existing and future calculations, but the absolute will be higher. Barriers must reduce noise by >5dBA. 	Stantec will remove the existing subdivision noise barriers that are not effective from the model (providing less than 5 dB noise reduction).
12.	<p><i>Comment #10: Appendix B, CADNA/A Sample Calculations: the provided calculations include only bus idle and bus movement. Include representative calculations of the proposed GO Transit rail line (noise & vibration) with and without noise / vibration control measures.</i></p> <ul style="list-style-type: none"> MECP requested Stantec provide one or two sample calculations with and without mitigation. Stantec will include sample calculations in the revised report. 	Stantec to provide sample calculations in the revised report.
13.	<p>Other Items</p> <ul style="list-style-type: none"> MECP confirmed another review of the report is not necessary; suggested Stantec reach out directly if there are any additional questions. MECP noted that their review time is approximately 4 weeks if they need to review the revised Noise and Vibration Technical Report prior to the 100% EPR Addendum. In lieu of this, MECP advised that Metrolinx can provide another comment response table ahead of the 100% EPR if Stantec would like their responses reviewed prior to finalization. Metrolinx confirmed the Public Information Centre is currently planned for after Christmas, with the formal EPR Addendum submission expected in Spring 2023. Metrolinx will provide a revised schedule to MECP once the dates for the Public Information Centre are confirmed. 	Metrolinx to share the revised schedule with MECP, once available.

If there are any errors or omissions, please advise Lindsay.Frith@Stantec.com within ten business days of the issuance of these minutes. Minutes prepared by Lindsay Frith.

Event Summary: Clarington Public Library- Bowmanville Branch – Community Engagement Pop-Up

Tuesday, November 15th, 2022

Pop Up from 10:00 am – 1:00 pm

ATTENDEES

Theresa Tran, Sr Manager Community Engagement, Durham Region

Justin Klimkait, Community Relations and Issues Specialist, Durham Region

William Freeman King, Community Relations and Issues Specialist, Durham Region

Number of visitors engaged: 20

Number of subscribers: 5

PRE-EVENT SAFETY REVIEW

Low Risk: In front of branch main doors, MX and Clarington staff on-site, no contentious issues (remain aware). Cold winds near front entrance, wore MX thermal jacket to keep warm.

OVERVIEW

The Durham Community Engagement team hosted an in-person pop up held at the Clarington Public Library in Bowmanville. This was the second popup in the municipality, following our successful engagement at the Bowmanville Applefest.

Our popup focused on the upcoming projects in the Durham Region, but the main topic of discussion was the Bowmanville Extension. Within our time at the branch we had over 20 meaningful interactions with constituents from the area. Most of the constituents proactively came out to speak to us as our popup information was shared on social media through the Municipality of Clarington's Facebook page and the Clarington Public Library website. The extension drew a lot of interest; questions were asked regarding the timeline of completion, station locations and integration of active transportation (bike shelters and routes) in the project.

Outside of our projects, there were inquiries regarding the morning bus services in the area. A resident brought up the ridership levels on the morning express buses and suggested we should have 2 different routes travelling westbound to the Durham College Oshawa GO station to accommodate the ridership traffic. Another resident brought up the obstacles they've come across travelling to Pearson Airport for earlier flights.

Overall, this popup was positive, it was great to interact with the visitors to receive inquiries and feedback related to the extension. Visitors expressed their interest in

future Metrolinx engagements, in case they had more questions on the project. One memorable highlight was a visitor informing us about his podcast he named after the exit for Courtice, one of our proposed station locations for the Bowmanville extension.

KEY QUESTION THEMES

- Bowmanville Extension Completion date
- Proposed station locations
- Return of express service
- The ease of ridership changing between different transit lines

NEXT STEP:

- Confirming a December date with the Clarington Library
- Look into service levels for morning transit in Bowmanville

TONE

8 (Positive Overall, friendly encounters with public)



Event Summary: Iroquois Sports Park Engagement Pop-Up

Tuesday, November 29th, 2022

Pop Up from 5:00 pm – 9:00 pm

ATTENDEES

Justin Klimkait, Community Relations and Issues Specialist, Durham Region

William Freeman King, Community Relations and Issues Specialist, Durham Region

Number of visitors engaged: 40

Number of subscribers: 2

PRE-EVENT SAFETY REVIEW

Low Risk: In front of main doors, MX and Town of Whitby staff on-site, no contentious issues (remain aware), face masks

OVERVIEW

The Durham Community Engagement team hosted their first in-person pop at the Iroquois Sports Park in Whitby.

The popup focused on the upcoming projects in the Durham Region, such as the GO Expansion, Bowmanville Extension and the DSBRT. Within our time at the arena we had over 40 meaningful interactions with constituents from the area. Most of the visitors were parents of children in the arenas youth leagues. There were many questions about GO service along the Lakeshore East GO line as people inquired about the return of express trains. The updates shared on the GO Expansion benefits such as the frequency of the service on the line brought excitement to the region.

Overall, this popup was positive, it was great to interact with the visitors to receive inquiries and feedback related to our projects. Visitors expressed their interest in future Metrolinx engagements, in case they had more questions on the project.

KEY QUESTION THEMES

- Return of express service
- Bowmanville Extension Completion date
- Proposed station locations

NEXT STEP/LESSONS LEARNED

- Look into upcoming tournaments held at Iroquois Sports Park
- Reconnect with the staff to confirm for a follow-up visit during a higher traffic period or during a tournament as mentioned
- Ensure that we have additional swag items for the visiting kids

TONE

8 (Positive Overall, friendly encounters with public)



Meeting Summary: Briefing with MPP Coe and MPP McCarthy Bowmanville Extension Overview

Thursday, December 8th, 2022

8:00am – 8:30am

SUMMARY

- The Durham Region Community Engagement Team organized and chaired a preliminary briefing to MPP Coe (Whitby) and MPP McCarthy (Durham) surrounding the Bowmanville Extension and the status of the project.
- The meeting took place virtually over Microsoft Teams.
- There were 5 attendees including both MPP Coe and MPP McCarthy and Metrolinx staff.

ATTENDEES

Metrolinx

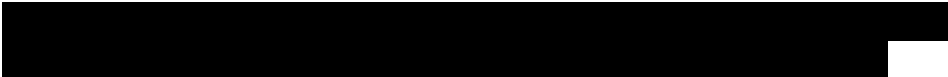
- Theresa Tran, Senior Manager, Community Engagement, Durham
- Laura Adams, Director, Community Engagement, East
- Jake Schabas, RER Head Sponsor, Planning & Development

Elected Officials

- MPP Lorne Coe – Whitby
- MPP Todd J. McCarthy – Durham

QUESTIONS/COMMENTS/CONCERNS

- [REDACTED]
- [REDACTED]
- [REDACTED]
- [REDACTED]
- [REDACTED]
- Q (MPP McCarthy): When do we expect the Bowmanville Extension to be in operation?
 - A: This will take multiple years, however once the construction manager is onboarded and there is detailed design work completed, more dates and timelines will be able to be shared on the project.
- Q (MPP McCarthy): What will people see in [terms of construction over] the first years of the project?
 - A: This depends on the Early Works package and on the detailed design being completed.
- Q (MPP Coe): What kind of relationship do we currently have with Durham Region?

- **A:** There is an ongoing steering committee with the Region which Metrolinx attends to discuss items such as crossings among others. There is also a monthly touch point with staff.
- **Q (MPP McCarthy):** What kind of timelines are we able to share with the public?
 - **A:** Once the construction manager is onboarded, tentatively set for April 2023, further timelines will be developed. Until this point, timelines should be kept at a high level overview, subject to change.
- **C (MPP Coe):** Ensure that the upcoming PIC dates and locations are shared ahead of time with MPP Coe and MPP McCarthy. Also, for Metrolinx to keep MPP Coe and MPP McCarthy apprised of meetings with staff (meeting agendas/minutes) or with Mayors/Elected Officials (invitation to attend).
- 

ATTACHED
SLIDE DECK

TONE
8 (Positive)

Event Summary: Clarington Public Library: Bowmanville Branch and Delpark Homes Centre Pop-ups

Tuesday, December 13th, 2022

Clarington Public Library Bowmanville Branch from 10:00 am – 1:00 pm
Delpark Homes Centre from 2:00 pm – 4:00 pm

ATTENDEES

Theresa Tran, Sr. Manager Community Relations, Durham Region
Justin Klimkait, Community Relations and Issues Specialist, Durham Region
William Freeman King, Community Relations and Issues Specialist, Durham Region

Number of visitors engaged: 45
Number of subscribers: 6

PRE-EVENT SAFETY REVIEW

Low Risk: In front of main doors, MX staff on-site, no contentious issues (remain aware), face masks and floor mat

OVERVIEW

The Durham Community Engagement team held a series of pop-ups, starting in Bowmanville at the Clarington Public Library and ending in Oshawa at the Delpark Homes Centre. Prior to the events the news was shared through our Twitter handle @GOExpansion.

To spread awareness on the upcoming Bowmanville Extension Public Information Center in the new year, the CE team continued their series of popups at the branch to focus mainly on the extension. We had over 10 meaningful interactions with constituents from the area who had questions around the timeline of completion. We are looking forward to hosting a follow up event next week (Dec 20th) for more constituents to have the opportunity to engage with us.

KEY QUESTION THEMES

- Bowmanville Extension Completion date
- Proposed station locations

NEXT STEP/LESSONS LEARNED

- Reconnect with the staff to send out additional tweets leading up to event

As we continued the day, the team held another popup at the Delpark Homes Centre in Ajax. This was the first in person event held at the centre which is in proximity of the

Durham Scarborough Bus Rapid Transit route. The facility had many amenities such as a swimming pool, hockey arena and an Oshawa Public Library branch near the entrance. This may be the reason in the variance of the age demographic for the visitors; as there was a mix of seniors and students.

It was great to hear the excitement around the service as a group of students expressed their desire to travel to Scarborough Town Centre and post secondary institutions. Some of them signed up for our newsletter to receive updates on the project.

One of the highlights was a visit from Regional and City Councillor John Neal, who stopped by our table to chat about the DSBRT. He was very interested in the plans for the end of the line in downtown Oshawa at Simcoe St.

Overall, the popups were positive, it was great to interact with the visitors to receive inquiries and feedback related to our projects. Visitors expressed their interest in future Metrolinx engagements, in case they had more questions on the project.

KEY QUESTION THEMES

- How to use the PRESTO (tapping and reloading card)
- Lack of agents in GO stations
- Fare discounts for groups (Senior and Students)
- Proposed station locations

NEXT STEP/LESSONS LEARNED

- Reconnect with the staff to confirm for a follow-up visit during a higher traffic period
- Bring more visuals for PRESTO including promotions and aids to identify PRESTO card reload machines
- Ensure that we have additional swag items for the visiting kids

TONE

8 (Positive Overall, friendly encounters with public)



Meeting Summary: Durham Region Committee of the Whole - Bowmanville Extension Overview

Wednesday, December 14th, 2022

11:00am - 12:00pm

Virtual Meeting

SUMMARY

- Durham Region Committee of the Whole were appreciative for the update on the Bowmanville Extension. Councillors inquired looking for updates and assurance that the extension will be delivered and would be free of issues encountered on other projects within the City of Toronto such as the Eglinton Crosstown. There was interest around construction timelines and upcoming milestones that could demonstrate the commitment to the project.
- Specific questions were posed regarding parking availability, electrification of the CP corridor, and station design. More broadly, there were also questions posed regarding service guarantees on the GO network and towards the returning of the express services along Lakeshore East.
- Metrolinx attendees provided answers to several questions posed and will provide follow up responses to the Durham Region CAO once the information has been gathered.

PRESENTERS

- Jake Schabas, Head Sponsor, GO Expansion
- Rajesh Khetarpal, Vice President, Community Engagement
- Meghan Wong, Vice President, Development - Heavy Rail

ATTENDEES

- Laura Adams, Director, Community Engagement, East
- Theresa Tran, Senior Manager, Community Engagement, Durham
- Justin Klimkait, Community Engagement and Issues Specialist, Durham
- Derek Davies, Senior Advisor, TOC
- Nour El-Saheb, Senior Advisor, Bowmanville Extension Program Sponsor
- Jeff Yee, Senior Manager, Line Extensions

Elected Officials

- Durham Region Council Chair John Henry
- Durham Region Committee of the Whole
- Durham Region CAO
- Durham Regional Staff

QUESTIONS/COMMENTS/CONCERNS

Councillor Maurice Brenner (Regional Councillor, Ward 1, City of Pickering)

- **Q:** With everything that is occurring within the City of Toronto with the Eglinton Crosstown LRT project, how are we to be assured that Bowmanville will not face similar issues?
 - **A:** The Bowmanville Extension project is using a different procurement model, CMAR, which brings the manager on at an earlier date, where Metrolinx can work with the manager at the table prior to the schedule being released and construction commencing. This will mitigate certain risks which has been faced in the City of Toronto with other projects.
- **Q:** There are currently concerns regarding express trains and that it has not returned to service. How can we be assured that this will return?
 - **A:** There are several factors which went into the removal of the express train service. Currently we are still within post-COVID recovery mode and monitoring ridership

demands. Estimated timelines can be gathered by colleagues and communicated back to the COW.

- **Q:** Any idea how Metrolinx engagement team can engage with Durham Region Transit to ensure that the community is best served?
 - **A:** We continue to work alongside Durham Region Transit and have an effective working relationship and are monitoring service demands. We remain committed to working with Durham Region Transit and within the community.
- **Q:** When Mx is not able to meet its service guarantees, are there any repercussions in terms of accountability if things occur outside of customer control?
 - **A:** Metrolinx does have a service guarantee policy that offers refunds at times for service interruptions which lead to significant delay.
- **C:** Please reach back out and communicate additional responses/information to Durham Region CAO.

Councillor Rick Kerr (Regional and City Councillor, Ward 4, City of Oshawa)

- **Q:** When do you anticipate the opening of the stations for service?
 - **A:** We are currently in the procurement phase for a construction manager and will have timelines for the line completion and station delivery. This construction manager announcement is a key milestone to come in the new year.
- **Q:** Where is the Oshawa station to be located?
 - **A:** Locations are fixed through the IBC in terms of where they will stop, however the station design and physical design are to come and is subject to change.

Councillor Tito-Dante Marimpietri (Regional and City Councillor, Ward 2, City of Oshawa)

- **Q:** Would like to know more about the trajectory of the project and guarantee that it will occur?
 - **A:** In October of 2022, we closed on the RFP and have shortlisted the proponents. In Spring of 2023 we will be awarding this contract and will announce this. [REDACTED]
- **Q:** Has there been anything that negatively impacted the EA thus far?
 - **A:** Due to the time elapsed since the Statement of Completion of the previous EPR, the significant change in alignment and the addition of new items such as the Highway 401 crossing, an EPR Addendum was required as part of the EA process to commence.
- **Q:** In terms of the design reaching 100%, would we be looking at 2024 for this? Would you not suggest that the issues experienced in Toronto would be faced within Durham Region?
 - **A:** Certain elements will achieve 100% design at different times and will be prioritized as best as possible. [REDACTED]
 - **A:** The project in the City of Toronto is a very different project in the way of complexity and risk. With the Bowmanville Extension project, it is a different procurement model as well as the GO railcars are already available for use and are not changing/new.
- **Q:** Can you outline the risk of the TOC program and needing a private partner? What if there isn't a partner- will you still move forward with stations? Isn't that a risk?
 - **A:** At this time, all new stations are delivered through the TOC program, that is the mandate and there is a great deal of interest already.
 - **A (CAO of Durham):** Proposed station strategy will be unveiled in January and a council info session will come in early 2023. This session will go station by station and outline mitigation strategies for station delivery.

Councillor Willie Woo (Regional Councillor, Wards 3 & 4, Municipality of Clarington)

- **Q:** Can you give an idea of the response back from land developers with regards to the TOC program?
 - **A:** Conversations are confidential at the moment but there has been interest in all of the stations, and we are moving forward in a responsible way. We are excited about how things are moving forward but no details are available right now.
- **Q:** Can you outline the anticipated parking spaces at the stations to be delivered?
 - **A:** All parking is anticipated as per ridership demands and needs. Parking has been anticipated further east from riders within Oshawa and Clarington. We are looking at flexible parking, and future alternative ways to bring people to the service, where then the stations will be flexible to change into the future.
- **Q:** Would the Courtice and Bowmanville stations be able to handle the amount of parking required with only surface parking? Is structure parking being considered?
 - **A:** Parking design has yet to be developed and parking garage models may be considered as part of the design. However, parking garages do create permanent assets which are hard to alter in the future and transform as the area develops.
- **Q:** Is the CP line going to be electrified? Will riders have to switch over at Oshawa if not?
 - **A:** Currently we are not including electrification on the CP line from Oshawa to Bowmanville. However, riders will not have to switch over at Oshawa as diesel trains will still be able to operate on the LSE line. VIA rail will also continue to operate diesel locomotives on the LSE line.

Councillor Rhonda Mulcahy (Regional Councillor, Town of Whitby)

- **Q:** For parking availability, do we have an anticipated number of users who would utilize the most eastern stops, Courtice and Bowmanville? Do we have data collected on this?
 - **A:** We do have data collected on how many riders will be parking at the new stations and boarding there versus at DC Oshawa and Whitby GO stations. This data can be gathered and shared with the COW through the CAO.

Councillor Marilyn Crawford (Deputy Mayor, Town of Ajax)

- **Q:** Regarding express trains, when would they be returning to service?
 - **A:** We are constantly monitoring ridership levels for service efficiencies. The express rail service was removed to allow for uninterrupted construction. The express service is planned to return once this construction has been completed.
- **C:** Additional lead time on consultations need to be provided to the community to allow for adequate consultation.

Councillor John Neal (Regional and City Councillor, Ward 1, City of Oshawa)

- **C:** Metrolinx was out in my ward yesterday and there was good engagement with the residents.

NEXT STEPS:

- Share information about the upcoming EPR Addendum PIC.
- Gather information required to respond back to the COW through the CAO on items unable to be addressed during the briefing
 - Anticipated date for return of LSE Express service
 - Anticipated parking usage for proposed Courtice and Bowmanville GO stations

ATTACHED: Durham COW Briefing Deck – Bowmanville Extension

TONE: 8 (Positive)

Event Summary: Clarington Public Library: Bowmanville Branch Popup

Tuesday, December 20th, 2022

Clarington Public Library Bowmanville Branch from 10:00 am – 1:00 pm

ATTENDEES

Justin Klimkait, Community Relations and Issues Specialist, Durham Region
William Freeman King, Community Relations and Issues Specialist, Durham Region

Number of visitors engaged: 25

Number of subscribers: 3

PRE-EVENT SAFETY REVIEW

Low Risk: In front of main doors, MX staff on-site, no contentious issues (remain aware), face masks and floor mat

OVERVIEW

The Durham Community Engagement team held a follow up pop-up in Bowmanville at the Clarington Public Library to the pop-up held the prior week on the 13th of December. Prior to the events, the popup information was shared through our Twitter handle @GOExpansion as well as through the Clarington Library events page.

To spread awareness on the most recent information on the Bowmanville Extension as well as to inform the public of the upcoming Bowmanville Extension Public Information Center in the new year, the CE team continued their series of popups at the branch to focus mainly on the extension.

We had approximately 25 meaningful interactions with constituents from the area who had questions surrounding updates on the project and the timeline of completion. We were able to provide the most up to date information possible and a few of the residents took advantage of the signup sheet for the e-newsletter to stay informed.

KEY QUESTION THEMES

- Bowmanville Extension Completion date
- Proposed station locations
- Status of the project

NEXT STEP/LESSONS LEARNED

- For upcoming pop-ups at the Bowmanville Branch, ensure to promote our attendance through multiple avenues and channels
- Bring more visuals for PRESTO including promotions and aids to identify PRESTO card reload machines
- Ensure that we have additional swag items for the visiting children

TONE

8 (Positive Overall, friendly encounters with public)



Event Summary: Clarington Public Library: Bowmanville Branch Popup

Wednesday, February 3rd, 2023

Clarington Public Library Bowmanville Branch from 10:00 am – 1:00 pm

ATTENDEES

Justin Klimkait, Community Engagement and Issues Specialist, Durham Region
Theresa Tran, Senior Manager - Community Engagement, Durham Region

Number of visitors engaged: 15

Number of subscribers: 4

PRE-EVENT SAFETY REVIEW

Low Risk: In front of main doors, MX staff on-site, library staff on site, no contentious issues (remain aware), face masks and floor mat

OVERVIEW

The Durham Community Engagement team held a up pop-up in Bowmanville at the Clarington Public Library in follow up to several pop-ups held in 2022 and early 2023. Prior to the event, the popup information was shared through our Twitter handle @GOExpansion as well as through the Clarington Library events page. It was also shared through Durham Region online news platform [here](#) which generated additional interest and knowledge of the event.

We had about 15 meaningful interactions with constituents from the area who had questions surrounding updates on the project and the timeline of completion. We also received repeat inquiries about pop-ups at the Newcastle Branch of Clarington Library which the team is planning for in coming weeks.

KEY QUESTION THEMES

- Bowmanville Extension Completion date and updates
- Proposed station locations
- Status of the project
- GO Expansion details and upgrades to come

NEXT STEP/LESSONS LEARNED

- For upcoming pop-ups at the Bowmanville Branch, ensure to promote our attendance through multiple avenues and channels
- Attend to additional locations within Bowmanville, in evening hours as well

tone

8 (Positive Overall, friendly encounters with public)

Event Summary: Oshawa Public Library – McLaughlin Branch Popup

Wednesday, February 6th, 2023

Oshawa Library – McLaughlin Branch from 11:00 am – 1:00 pm

ATTENDEES

Justin Klimkait, Community Engagement and Issues Specialist, Durham Region
Emily Cameron, Community Engagement and Issues Specialist

Number of visitors engaged: 20

Number of subscribers: 3

PRE-EVENT SAFETY REVIEW

Low Risk: In front of main doors, MX staff on-site, security on site, library staff on site, no contentious issues (remain aware)

OVERVIEW

The Durham Community Engagement team held their first pop-up at the Oshawa Library, McLaughlin Branch. This location was identified as an ideal location for an information pop-up with the proximity to downtown Oshawa, multiple transit routes, and near one of the proposed stations as part of the Bowmanville Extension. Prior to the event, the popup information was shared through our Twitter handle @GOExpansion as well as through the Oshawa Library twitter handle. It was also shared through Durham Region online news platform [here](#) which generated additional interest and knowledge of the event.

We had over 20 meaningful interactions with constituents from the area who had questions surrounding updates on the project and the timeline of completion. We also were able to speak with library staff who were curious to the project details and updates. Multiple residents signed up for the newsletter as well. Residents who stopped by were generally quite enthusiastic about transit improvements, with many of the residents as well as staff utilizing transit to reach this branch. There was interest from residents in the DSBRT project as well, looking forward to increased frequency and connections from Oshawa to Scarborough.

Overall, the pop-up information booth was very successful and continues to form a good foundational relationship with the community. The Durham Region CE team will be returning to the Oshawa Library McLaughlin Branch later this month again.

KEY QUESTION THEMES

- Bowmanville Extension Completion date and updates
- Proposed station locations – Oshawa station locations

- Status of the project
- DSBRT interest into where the alignment is proposed

NEXT STEP/LESSONS LEARNED

- Bring additional swag items and information on the DSBRT project

8 TONE

8 (Positive Overall, friendly encounters with public)



From: [Justin Klimkait](#)
To: [Community Relations and Communications](#)
Cc: [Jake Schabas](#); [Rajesh Khetarpal](#); [Meghan Wong](#); [Laura Adams](#); [Theresa Tran](#); [Derek Davies](#); [Nour El-Saheb](#); [Jeff Yee](#)
Subject: Meeting Summary: Durham Region Committee of the Whole - December 14, 2022
Date: Thursday, December 15, 2022 9:42:09 AM
Attachments: [Bowmanville Extension - Durham Region - December 2022.pdf](#)
[image001.png](#)

Meeting Summary: Durham Region Committee of the Whole - Bowmanville Extension Overview

Wednesday, December 14th, 2022

11:00am – 12:00pm

Virtual Meeting

SUMMARY

- Durham Region Committee of the Whole were appreciative for the update on the Bowmanville Extension. Councillors inquired looking for updates and assurance that the extension will be delivered and would be free of issues encountered on other projects within the City of Toronto such as the Eglinton Crosstown. There was interest around construction timelines and upcoming milestones that could demonstrate the commitment to the project.
- Specific questions were posed regarding parking availability, electrification of the CP corridor, and station design. More broadly, there were also questions posed regarding service guarantees on the GO network and towards the returning of the express services along Lakeshore East.
- Metrolinx attendees provided answers to several questions posed and will provide follow up responses to the Durham Region CAO once the information has been gathered.

PRESENTERS

- Jake Schabas, Head Sponsor, GO Expansion
- Rajesh Khetarpal, Vice President, Community Engagement
- Meghan Wong, Vice President, Development – Heavy Rail

ATTENDEES

- Laura Adams, Director, Community Engagement, East
- Theresa Tran, Senior Manager, Community Engagement, Durham
- Justin Klimkait, Community Engagement and Issues Specialist, Durham
- Derek Davies, Senior Advisor, TOC
- Nour El-Saheb, Senior Advisor, Bowmanville Extension Program Sponsor
- Jeff Yee, Senior Manager, Line Extensions

Elected Officials

- Durham Region Council Chair John Henry
- Durham Region Committee of the Whole
- Durham Region CAO
- Durham Regional Staff

QUESTIONS/COMMENTS/CONCERNS

Councillor Maurice Brenner (Regional Councillor, Ward 1, City of Pickering)

- **Q:** With everything that is occurring within the City of Toronto with the Eglinton Crosstown LRT project, how are we to be assured that Bowmanville will not face similar issues?
 - **A:** The Bowmanville Extension project is using a different procurement model, CMAR, which

brings the manager on at an earlier date, where Metrolinx can work with the manager at the table prior to the schedule being released and construction commencing. This will mitigate certain risks which has been faced in the City of Toronto with other projects.

- **Q:** There are currently concerns regarding express trains and that it has not returned to service. How can we be assured that this will return?
 - **A:** There are several factors which went into the removal of the express train service. Currently we are still within post-COVID recovery mode and monitoring ridership demands. Estimated timelines can be gathered by colleagues and communicated back to the COW.
- **Q:** Any idea how Metrolinx engagement team can engage with Durham Region Transit to ensure that the community is best served?
 - **A:** We continue to work alongside Durham Region Transit and have an effective working relationship and are monitoring service demands. We remain committed to working with Durham Region Transit and within the community.
- **Q:** When Mx is not able to meet its service guarantees, are there any repercussions in terms of accountability if things occur outside of customer control?
 - **A:** Metrolinx does have a service guarantee policy that offers refunds at times for service interruptions which lead to significant delay.
- **C:** Please reach back out and communicate additional responses/information to Durham Region CAO.

Councillor Rick Kerr (Regional and City Councillor, Ward 4, City of Oshawa)

- **Q:** When do you anticipate the opening of the stations for service?
 - **A:** We are currently in the procurement phase for a construction manager and will have timelines for the line completion and station delivery. This construction manager announcement is a key milestone to come in the new year.
- **Q:** Where is the Oshawa station to be located?
 - **A:** Locations are fixed through the IBC in terms of where they will stop, however the station design and physical design are to come and is subject to change.

Councillor Tito-Dante Marimpietri (Regional and City Councillor, Ward 2, City of Oshawa)

- **Q:** Would like to know more about the trajectory of the project and guarantee that it will occur?
 - **A:** In October of 2022, we closed on the RFP and have shortlisted the proponents. In Spring of 2023 we will be awarding this contract and will announce this. [REDACTED]. All business cases and available information are currently available online.
- **Q:** Has there been anything that negatively impacted the EA thus far?
 - **A:** Due to the time elapsed since the Statement of Completion of the previous EPR, the significant change in alignment and the addition of new items such as the Highway 401 crossing, an EPR Addendum was required as part of the EA process to commence.
- **Q:** In terms of the design reaching 100%, would we be looking at 2024 for this? Would you not suggest that the issues experienced in Toronto would be faced within Durham Region?
 - **A:** Certain elements will achieve 100% design at different times and will be prioritized as best as possible. [REDACTED].
 - **A:** The project in the City of Toronto is a very different project in the way of complexity and risk. With the Bowmanville Extension project, it is a different procurement model as well as the GO railcars are already available for use and are not changing/new.
- **Q:** Can you outline the risk of the TOC program and needing a private partner? What if there isn't a partner- will you still move forward with stations? Isn't that a risk?

- **A:** At this time, all new stations are delivered through the TOC program, that is the mandate and there is a great deal of interest already.
- **A (CAO of Durham):** Proposed station strategy will be unveiled in January and a council info session will come in early 2023. This session will go station by station and outline mitigation strategies for station delivery.

Councillor Willie Woo (Regional Councillor, Wards 3 & 4, Municipality of Clarington)

- **Q:** Can you give an idea of the response back from land developers with regards to the TOC program?
 - **A:** Conversations are confidential at the moment but there has been interest in all of the stations, and we are moving forward in a responsible way. We are excited about how things are moving forward but no details are available right now.
- **Q:** Can you outline the anticipated parking spaces at the stations to be delivered?
 - **A:** All parking is anticipated as per ridership demands and needs. Parking has been anticipated further east from riders within Oshawa and Clarington. We are looking at flexible parking, and future alternative ways to bring people to the service, where then the stations will be flexible to change into the future.
- **Q:** Would the Courtice and Bowmanville stations be able to handle the amount of parking required with only surface parking? Is structure parking being considered?
 - **A:** Parking design has yet to be developed and parking garage models may be considered as part of the design. However, parking garages do create permanent assets which are hard to alter in the future and transform as the area develops.
- **Q:** Is the CP line going to be electrified? Will riders have to switch over at Oshawa if not?
 - **A:** Currently we are not including electrification on the CP line from Oshawa to Bowmanville. However, riders will not have to switch over at Oshawa as diesel trains will still be able to operate on the LSE line. VIA rail will also continue to operate diesel locomotives on the LSE line.

Councillor Rhonda Mulcahy (Regional Councillor, Town of Whitby)

- **Q:** For parking availability, do we have an anticipated number of users who would utilize the most eastern stops, Courtice and Bowmanville? Do we have data collected on this?
 - **A:** We do have data collected on how many riders will be parking at the new stations and boarding there versus at DC Oshawa and Whitby GO stations. This data can be gathered and shared with the COW through the CAO.

Councillor Marilyn Crawford (Deputy Mayor, Town of Ajax)

- **Q:** Regarding express trains, when would they be returning to service?
 - **A:** We are constantly monitoring ridership levels for service efficiencies. The express rail service was removed to allow for uninterrupted construction. The express service is planned to return once this construction has been completed.
- **C:** Additional lead time on consultations need to be provided to the community to allow for adequate consultation.

Councillor John Neal (Regional and City Councillor, Ward 1, City of Oshawa)

- **C:** Metrolinx was out in my ward yesterday and there was good engagement with the residents.

NEXT STEPS:

- Share information about the upcoming EPR Addendum PIC.
- Gather information required to respond back to the COW through the CAO on items unable to be addressed during the briefing

- Anticipated date for return of LSE Express service
- Anticipated parking usage for proposed Courtice and Bowmanville GO stations

ATTACHED: Durham COW Briefing Deck – Bowmanville Extension

TONE: 8 (Positive)

JUSTIN KLIMKAIT (he/him)

Community Engagement & Issues Specialist (Durham)

Metrolinx

10 Bay Street, 17th Floor | Toronto | Ontario | M5J 2W3

Justin.klimkait@metrolinx.com

416.278.4953



WE SERVE WITH PASSION, THINK FORWARD AND PLAY AS A TEAM

Kindly subscribe to our regional Durham Region e-newsletter [here](#)

Bowmanville Extension Preliminary Design Business Case

Durham Region Committee of the Whole

EXECUTIVE SUMMARY

- Extending GO rail services east beyond Oshawa into Bowmanville has been a long-standing goal of the Region and local municipalities looking to grow and improve existing population and job centres through sustainable transportation modes.
- The Province has committed to transforming the GO rail network into an all-day rapid transit network through the GO Expansion Program. As part of this program, the Province committed to extending the Lakeshore East GO Rail service to Bowmanville.
- More GO service to Bowmanville is part of the Growth Plan for the Greater Golden Horseshoe and aligns with the Regional Transportation Plan and Durham Region and municipalities' planning and policy to:
 - ✓ Bring 4.9 million annual boardings (2041);
 - ✓ Generate ~\$595M in transit benefits over the project lifecycle;
 - ✓ Reduce journey times by 15 min;
 - ✓ Improve GO facility capacity with 3,980-4,950 total parking spaces;
 - ✓ Deliver a Benefit Cost Ratio of 0.69 to 0.75*
- To achieve the proposed service level of peak half-hourly service to/from Bowmanville, weekday off-peak hourly service and weekend service every two hours, key capital infrastructure requirements on the CP Belleville Subdivision will require construction of infrastructure, civil works and signals for the portion in which Metrolinx will operate.

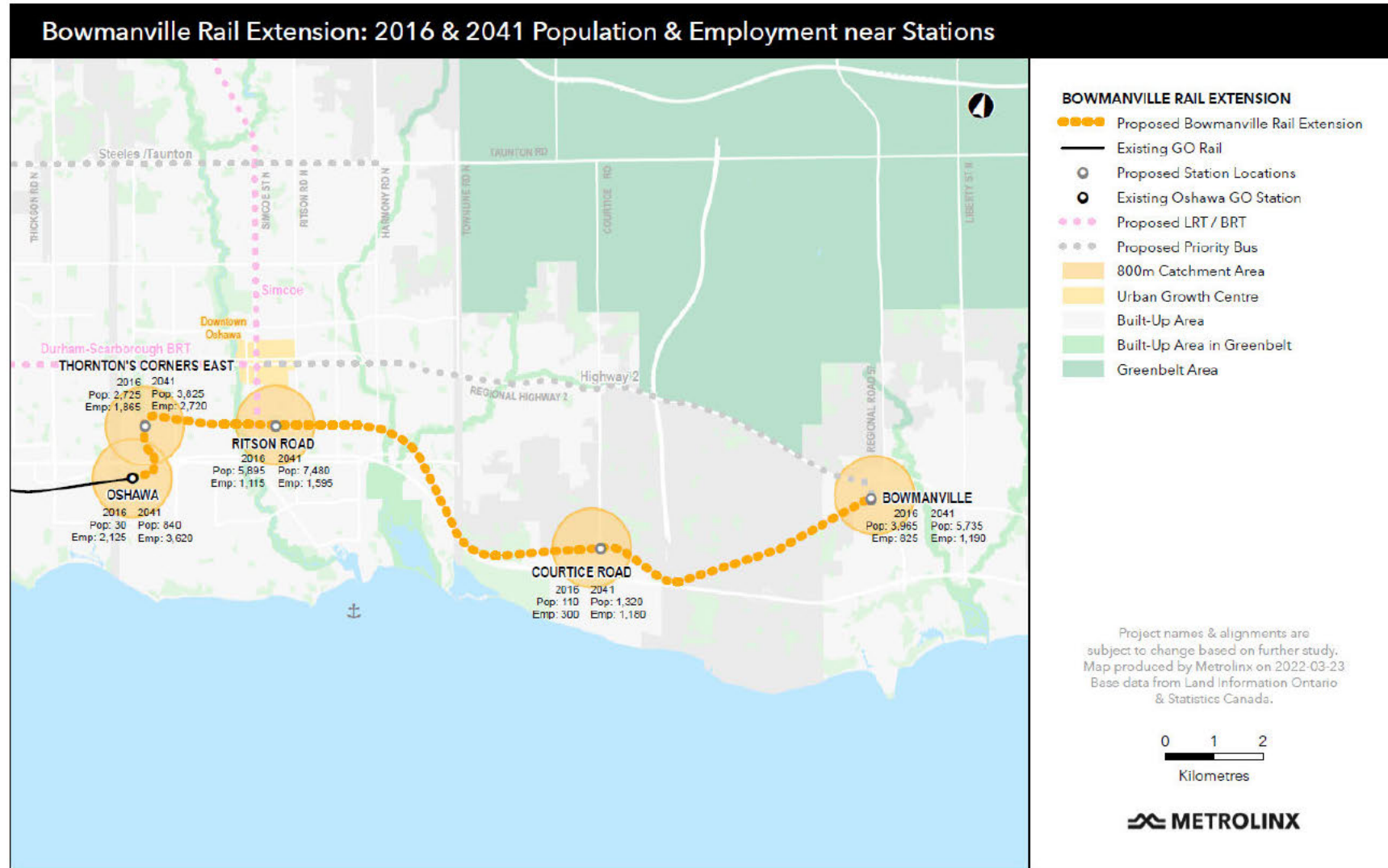
* *this is an updated BCR derived from the Technical Memorandum which evaluated the new required infrastructure requirements.*

PROGRAM OPPORTUNITY

The corridor expansion will bring large numbers of current and future residents and jobs within close proximity of the GO stations upon completion.

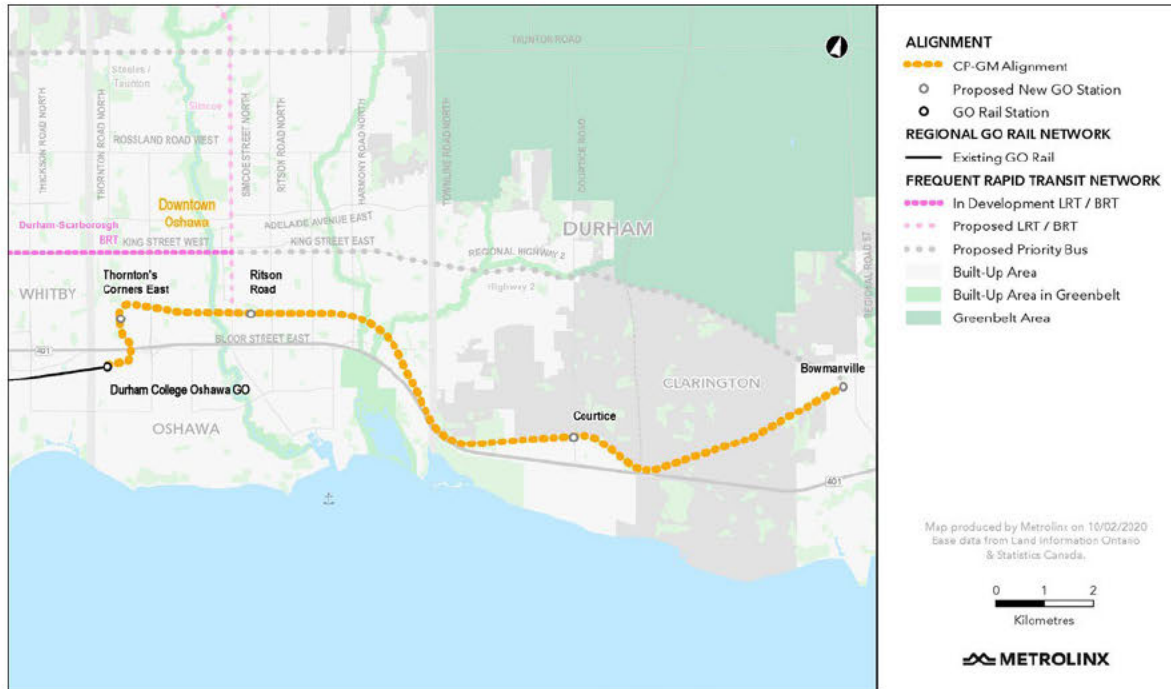
Travel time from Bowmanville will be decreased by approx. 15mins. It will also decrease the travel time between Peterborough, located northeast of the extension, and Union Station by providing a closer Bus to Rail transfer point.

3980 - 4950 total parking spaces at stations along the corridor extension



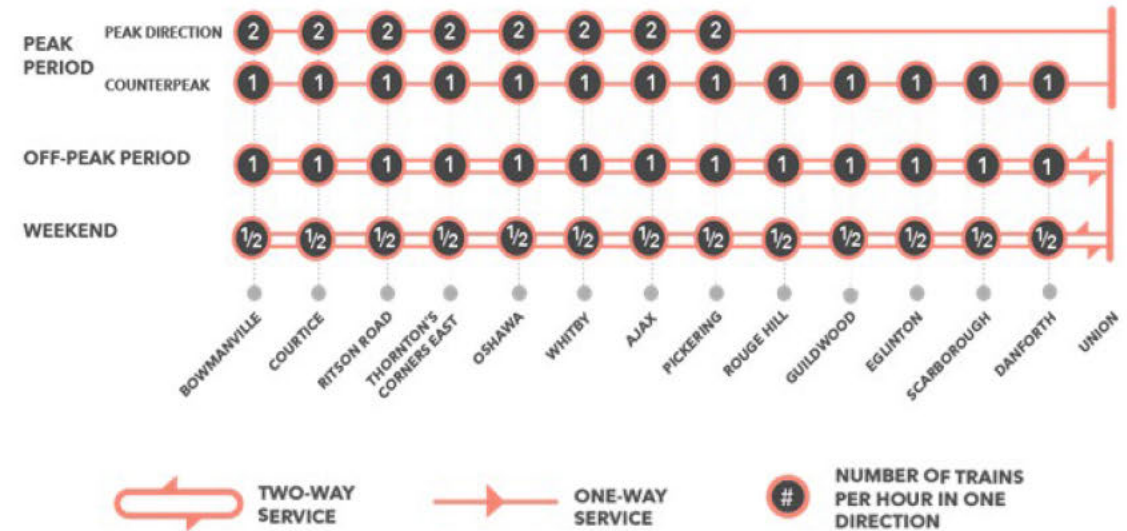
BACKGROUND

- Updated Initial Business Case (IBC) was completed in February 2020.
- Preferred option provides all-day service to Bowmanville by a new connection from the GO Subdivision and Durham College Oshawa GO station through the CP Railway's General Motors (GM) spur line to cross Highway 401 and connect to CP's Belleville Subdivision.
- Since the IBC, Metrolinx has continued to optimize the project to improve its benefits through the design phase.
- The Bowmanville GO Rail Expansion project will extend rail service east beyond Oshawa into Bowmanville with an additionally proposed four (4) stops (Thornton's Corners East, Ritson Road, Courtice and Bowmanville).
 - The proposed stations will be delivered through Metrolinx's Transit Oriented Communities program delivered in partnership with the Region of Durham.



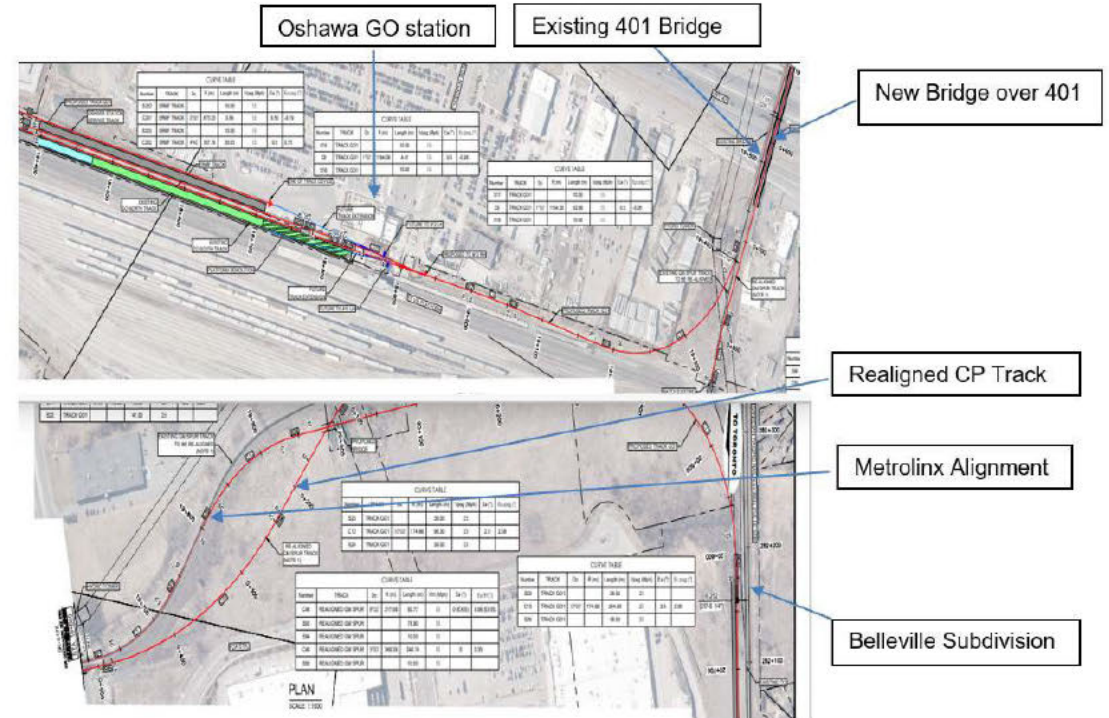
BACKGROUND (CONT.)

- Preliminary Design Business Case (PDBC) was approved in April 2020 and examined multiple all-day service options with the recommended option (Option 1) providing the following service:
 - Peak direction half-hourly services from Bowmanville operating express between Union Station and Pickering GO station.
 - Counter-peak direction hourly services to Bowmanville making all stops between Bowmanville and Union Station.
 - Weekday off-peak hourly services making all stops between Bowmanville and Union Station.
 - Weekend service every two hours making all stops between Bowmanville and Union Station.
- November 2020, GM Oshawa plant reopened resulting in CP requiring Metrolinx to pursue an independent alignment across the 401 instead of sharing the existing bridge on the GM Spur.
- Post Preliminary Design Business Case Technical Memorandum approved in March 2021 that includes new infrastructure requirements to address GM Spur impact.



BOWMANVILLE ALIGNMENT

- To extend rail service east of the Durham College Oshawa GO station, Metrolinx will be constructing and operating independently of CP on its own alignment crossing the 401 with a rail-to-rail grade separation across the GM Spur and will run parallel to the CP Belleville corridor.
- Along the Belleville corridor, Metrolinx will be undertaking the civil works, signal and infrastructure works on the Extension which will be exclusively used by Metrolinx. Through this alignment the target population centres can be reached.
- **Future increases to service will be easier with this configuration as it eliminates the need for CP approval of GO service levels.** When it comes to day-to-day operations, having a fully independent rail corridor dispatched by Metrolinx, including a separate Highway 401 crossing, will ensure more reliable service; GO service would no longer be impacted by freight related delays given the parallel bridge and exclusive tracks which resolve these potential situations.



ADDITIONAL INFORMATION & NEXT STEPS

- Metrolinx will be undertaking the civil, signal and infrastructure works on the extension which will be exclusively used by Metrolinx. Detailed design is progressing towards 50% milestone, scheduled for completion in Q1 2023.
- Technical studies for the Environmental Project Report (EPR) Addendum are underway.
- Public review in the form of a Virtual Public Information Centre (PIC) is anticipated for early 2023. This will also include a virtual live session.
- The 30-day public review period of the EPR Addendum is anticipated for Q1/Q2 2023.
- In April 2022, Metrolinx released an RFP to select a Construction Manager for the Development Phase and potential Implementation Phase of the project, along with authorizing associated agreements.
- The RFP closed on October 28, 2022.



Event Summary: Clarington Public Library: Bowmanville Branch Popup

Wednesday, January 18th, 2023

Clarington Public Library Bowmanville Branch from 10:00 am – 1:00 pm

ATTENDEES

Justin Klimkait, Community Relations and Issues Specialist, Durham Region
William Freeman King, Community Relations and Issues Specialist, Durham Region

Number of visitors engaged: 40

Number of subscribers: 10

PRE-EVENT SAFETY REVIEW

Low Risk: In front of main doors, MX staff on-site, no contentious issues (remain aware), face masks and floor mat

OVERVIEW

The Durham Community Engagement team held a up pop-up in Bowmanville at the Clarington Public Library in follow up to several pop-ups held later in 2022. Prior to the event, the popup information was shared through our Twitter handle @GOExpansion as well as through the Clarington Library events page. It was also shared through Durham Region online news platform [here](#) which generated additional interest and knowledge of the event.

We had over 40 meaningful interactions with constituents from the area who had questions surrounding updates on the project and the timeline of completion. We were able to provide the most up to date information possible and 25% of the residents who attended the pop-up information table took advantage of the signup sheet for the e-newsletter to stay informed. There were also two members who arrived which are part of a community Facebook group which learned about the pop-up through the Durham Region online news platform (image of members below) which was shared in the group.

We also had a member of the public, [REDACTED] stop by the pop-up table to ask about the current status of the Bowmanville Extension project. [REDACTED] had previously submitted several inquiries about the project via email, which the Durham Region team had taken and shared internally as feedback, responding with information as it became available. As such, there was a good base level of understanding on the project from [REDACTED], and [REDACTED] was looking to obtain further information and specific details. While some of the details were unable to be answered to during the pop-up table, we were able to reassure [REDACTED] that further information would be shared with himself and the public as soon as possible. The interaction was largely very positive, with [REDACTED] leaving the information

table satisfied with our responses and looking forward to future updates and engagement opportunities. He was also interested in the GO Expansion project, electrification of the LSE rail line, and in the DSBRT project which we shared information on.

Overall, the pop-up information booth was very successful and continues to form a good foundational relationship with the community. The Durham Region CE team will be returning to the Clarington Library Bowmanville Branch the following two weeks as well as in the months leading up to the Public Information Centre.

KEY QUESTION THEMES

- Bowmanville Extension Completion date and updates
- Proposed station locations
- Status of the project
- GO Expansion details and upgrades to come

NEXT STEP/LESSONS LEARNED

- For upcoming pop-ups at the Bowmanville Branch, ensure to promote our attendance through multiple avenues and channels
- Ensure that we have additional swag items for the visiting children

TONE

8 (Positive Overall, friendly encounters with public)

Event Summary: Clarington Public Library: Bowmanville Branch Pop-up

Wednesday, January 24th, 2023

Clarington Public Library Bowmanville Branch from 10:00 am – 1:00 pm

ATTENDEES

Justin Klimkait, Community Relations and Issues Specialist, Durham Region
Laura Adams, Director, Community Engagement East

Number of visitors engaged: 25

Number of subscribers: 4

PRE-EVENT SAFETY REVIEW

Low Risk: In front of main doors, MX staff on-site, no contentious issues (remain aware), face masks and floor mat

OVERVIEW

The Durham Community Engagement team held a pop-up in Bowmanville at the Clarington Public Library in follow up to several pop-ups held in 2022 and early 2023. Prior to the event, the popup information was shared through our Twitter handle @GOExpansion as well as through the Clarington Library events page. It was also shared through Durham Region online news platform [here](#) which generated additional interest and knowledge of the event.

We had over 25 meaningful interactions with constituents from the area who had questions surrounding updates on the project and the timeline of completion. We also were able to speak with library staff as there had been requests for information deriving from Clarington Library Newcastle Branch. Residents in this area had been commenting in recent months with regard to bus routes between Newcastle and Bowmanville/Oshawa and wanted to know how they could provide feedback to our team with regard to Bus Route 88A. Library staff commented that there are several demographics including seniors and students which utilize this bus connection, with many residents not wanting to, or being able to, drive.

During the pop-up we also had Regional Councillor Willie Woo and a Clarington staff member stop by to inquire into the Bowmanville Extension and if there were any updates on the project which we can share. This interaction was very positive and casual in nature, with Regional Councillor Woo looking forward to future updates. Overall, the pop-up information booth was very successful and continues to form a good foundational relationship with the community. The Durham Region CE team will be returning to the Clarington Library Bowmanville Branch the next week as well as in February 2023 in lead up to the Public Information Centre.

KEY QUESTION THEMES

- Newcastle – Bowmanville/Oshawa Bus Route and Connections – Route 88A information
- Bowmanville Extension Completion date and updates
- Status of the project
- GO Expansion details and upgrades to come

NEXT STEP/LESSONS LEARNED

- For upcoming pop-ups at the Bowmanville Branch, ensure to promote our attendance through multiple avenues and channels
- Bring additional information and possible audio or visually impaired aides as there were residents who have visited in the last two weeks with visual impairments as well as literacy impairments

TONE

8 (Positive Overall, friendly encounters with public)

Event Summary: Pickering Public Library (Central Branch and George Ashe Branch) – Community Engagement Pop-Ups

Wednesday, February 8th, 2023

10:00am-12:00pm & 1:00 pm – 3:00 pm

ATTENDEES

Justin Klimkait, Community Relations and Issues Specialist, Durham Region
Theresa Tran, Senior Manager, Community Engagement, Durham Region

Number of visitors engaged: 15

Number of new subscribers: 3

Set up:

- Table and three chairs from Pickering Library branches
- GO Expansion postcards
- Bowmanville Extension postcards
- Student discount postcards
- Newsletter poster with subscription QR code and signup sheet
- Existing GO Network Map
- Durham Region business cards
- GO Bear stickers and tattoos

PRE-EVENT SAFETY CHECK

Pickering Public Library Locations - Both Low Risk: open setting, multiple exits, MX and Library staff on-site, no contentious issues noticed (remained aware)

OVERVIEW

The Durham Community Engagement team hosted their third in-person event at the Central Public Library in Pickering and second at the George Ashe Branch along Highway 2. The events were posted within the previous e-newsletter as well as sent out via Twitter from the GO Expansion handle. This tweet was retweeted by the City of Pickering as well as Pickering Library and library staff also dropped by to take a short video of our table for their social media channels.

The pop-ups were positively received despite a lower volume of foot traffic at the branches than average. During the second Pickering pop-up, the team was also able to connect with an organization, Planit Philo, who stopped by to discuss ongoing projects as well as potential future partnership opportunities focused on placemaking and public art. The group had reached out previously from their past involvement with Metrolinx during Doors Open Whitby and had planned to connect at the pop-up info booth.

The Durham team was also joined for the first time by a representative from Durham Regional Transit during the Pickering pop-ups to answer questions relevant to DRT and gather feedback. DRT's presence is to continue for the remaining February events as well as likely into future months. Overall, both of these pop-ups were very positive

overall, with visitors excited for improving transit connections through the GO Expansion program and future increased bus services with the DSBRT.

KEY QUESTION THEMES

- GO Expansion in Durham Region and what this entails
- Bowmanville Extension project updates and timelines
- DSBRT Project overview and design as well as timelines

LEARNINGS/NEXT STEPS:

- Look for alternative times to try and drive additional foot traffic (such as during a library event/activity)
- Bring additional swag items to attract visitors to the tables
- Track social media posts from the library

TONE

8 (Positive)

Event Summary: Ajax Public Library- Community Engagement Pop-Ups

Wednesday, February 15th, 2023

10:00am-1:00pm

ATTENDEES

Justin Klimkait, Community Engagement Advisor

Emily Cameron, Community Engagement Advisor

Number of visitors engaged: 20

Number of new subscribers: 3

Set up:

- Table and three chairs from Ajax Library
- GO Expansion postcards
- Bowmanville Extension postcards
- Student discount postcards
- Newsletter poster with subscription QR code and signup sheet
- Existing GO Network Map
- Durham Region business cards
- GO Bear stickers and tattoos

PRE-EVENT SAFETY CHECK

Ajax Public Library -Low Risk: open setting, multiple exits, MX and Library staff on-site, no contentious issues noticed (remained aware)

OVERVIEW

The Durham Community Engagement team hosted a pop-up event at the Ajax Public Library in Ajax. The events were posted within the previous e-newsletter as well as sent out via Twitter from the GO Expansion handle where the Town of Ajax and Ajax Public Library twitter handles were tagged.

Though relatively quiet for a pop-up event, there were some residents who were happy to see us and share their enthusiasm about the Bowmanville Extension and were looking forward to seeing construction begin on the project. Other inquiries were in regards to impacts construction may have, if electrification would be part of the Bowmanville Extension project, and to the location of stations for the Extension. The Durham team was also joined again by a representative from Durham Regional Transit, Holly, to answer questions relevant to DRT and gather feedback. DRT's presence is to continue for the remaining February events as well as likely into future months. Overall, the pop-up was very positive overall, with visitors excited for improving transit connections and frequency of service through the GO Expansion program and future increased bus services with the DBSRT project to come. Having Holly at our pop up was beneficial as there were some specific questions related to DRT routes.

KEY QUESTION THEMES

- GO Expansion in Durham Region and what this entails
- Bowmanville Extension project updates and timelines
- DSBRT Project overview and design as well as timelines

LEARNINGS/NEXT STEPS:

- Look for alternative times to try and drive additional foot traffic (such as during a library event/activity)
- Bring additional swag items to attract visitors to the tables
- Track social media posts from the library

TONE

8 (Positive)



Event Summary: Ajax Winterfest – Audley Recreation Centre

Monday, February 20th, 2023

11:00am – 4:00pm

ATTENDEES

Justin Klimkait, Community Engagement Advisor

Emily Cameron, Community Engagement Advisor

Number of visitors engaged: 280

Number of new subscribers: 16

Set up:

- Table and two chairs from Audley Recreation Centre
- GO Expansion postcards
- DSBRT Roll plans for Pickering Village Area
- Bowmanville Extension postcards
- Student discount postcards
- Newsletter poster with subscription QR code and signup sheet
- PRESTO information pamphlets
- Existing GO Network Map
- Metrolinx Swag Items – Hats, Frisbees, Tote Bags, Colouring Sheets and Crayons
- Durham Region business cards
- GO Bear stickers and tattoos

PRE-EVENT SAFETY CHECK

Ajax Audley Community Centre location - Both Low Risk: open setting, multiple exits, MX and Town staff on-site, no contentious issues noticed (remained aware)

OVERVIEW

The Durham Team was able to attend the annual Ajax Winterfest at the Audley Recreation Centre during the Family Day holiday on February 20th. The event contained several event spaces, dozens of vendors, food trucks, and outdoor play areas. The team was able to be set up inside one of the main auditoriums where there were also several other vendors, elected officials, as well as a performance stage and seating set up. The performance stage was filled throughout the day with a number of acts ranging from magic shows to musical performances.

The team was able to speak with nearly 300 residents throughout the day from 11am-4pm and was able to take in some great feedback from the community. Most of the visitors arrived with their children who loved the opportunity to take a cardboard GO Train or GO Bear sticker from the table, however there were several adults as well who took the opportunity for their own collection. These were especially popular and a great addition to the table. Adjacent to our table was the booth for MPP Barnes, which

featured an interactive photo booth which visitors could take their photo at with props and receive a digital and physical copy. On the other side of us, the Town of Ajax featured a table-mounted spinning wheel where visitors could spin for prizes which were on the table. For future events such as these, an additional interactive element such as this would be beneficial to draw people into the booth.

In terms of questions received, residents were excited to hear about the upcoming projects, particularly service and infrastructure (electrification) improvements via GO Expansion, and the increased connectivity from the DSBRT project. Many residents were avid transit users and were looking forward to the projects' future completion. There were many visitors who took project postcards as well as signed up for the e-newsletter for the region to stay updated. There were no negative interactions during the day, and no complaints regarding any ongoing or upcoming projects.

Overall, the event was a great success and saw over 8,000 attendees. With the weather being excellent as well, visitors were able to move in and outside of the venue to the various attractions with ease, and many spent many hours there. Near the end of the day, our team was able to speak again with the event organizers and Town of Ajax staff, where the success of the event was discussed, and we conveyed that this event is one which our team will continue to attend going forward.

KEY QUESTION THEMES

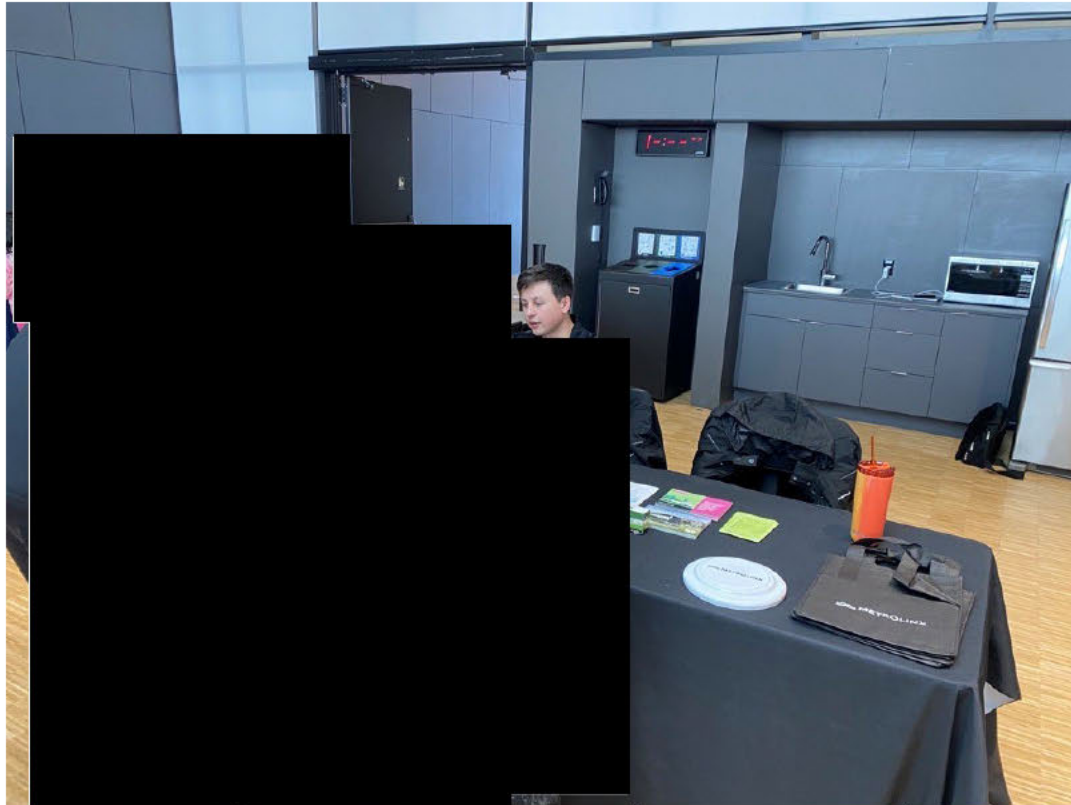
- GO Expansion in Durham Region and what this entails
- Bowmanville Extension project updates and timelines
- DSBRT Project overview and design

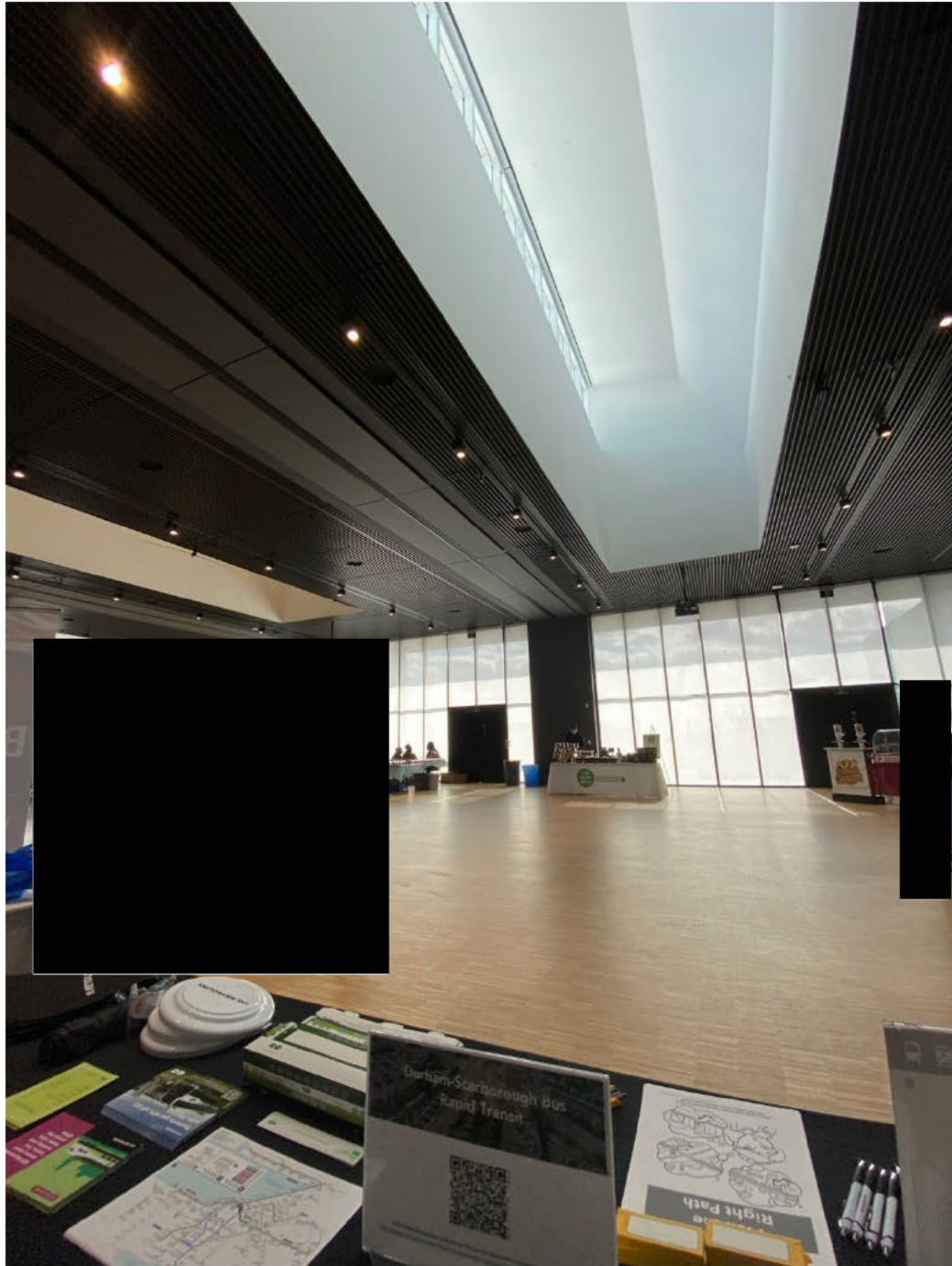
LEARNINGS/NEXT STEPS:

- Plan for future Ajax Community events such as Trailfest and Pumpkinville
- Plan to have additional swag items to account for the increased traffic and the type of audience we will be encountering

tone

10 (Overwhelmingly Positive)





Event Summary: Oshawa Public Library – McLaughlin Branch Popup

Wednesday, February 22nd, 2023

Oshawa Library – McLaughlin Branch from 10:45 am – 12:45 pm

ATTENDEES

Justin Klimkait, Community Engagement Advisor

William Freeman King, Community Engagement Advisor

Number of visitors engaged: 25

Number of subscribers: 4

PRE-EVENT SAFETY REVIEW

Low Risk: In front of main doors, MX staff on-site, security on site, library staff on site, no contentious issues (remain aware)

OVERVIEW

The Durham Community Engagement team held their second pop-up at the Oshawa Library, McLaughlin Branch. This location was identified as an ideal location for an information pop-up with the proximity to downtown Oshawa, multiple transit routes, and near one of the proposed stations as part of the Bowmanville Extension. Prior to the event, the popup information was shared through our Twitter handle @GOExpansion as well as through the Oshawa Library twitter handle.

We had over 25 meaningful interactions with constituents from the area who had questions surrounding updates on the Bowmanville Extension project and the timeline of completion. We also were able to speak with library staff who were curious to the project details and updates. Multiple residents signed up for the newsletter as well as filled out the transit surveys we had on hand. Residents who stopped by were generally quite enthusiastic about transit improvements, with many of the residents as well as staff utilizing transit to reach this branch. Residents also came to sign up to the newsletter who were new to the region, looking for a better understanding of the transit network. For this resident it was helpful to also have Holly, a representative from Durham Region Transit, there along with us at the information table to help discuss the transit network as well as the student discounts which are available.

There was interest from residents in the DSBRT project as well, looking forward to increased frequency and connections from Oshawa to Scarborough. One resident arrived from Whitby to obtain information and provide feedback surrounding the downtown Whitby section of the alignment and we were able to navigate through the preliminary design roll plans with the resident. They were able to leave satisfied and with a better understanding of how the design was proposed to be in the downtown Whitby area.

Overall, the pop-up information booth was successful and continues to form a good foundational relationship with the community. The Durham Region CE team will be returning to the Oshawa Library McLaughlin Branch in March 2023 again.

KEY QUESTION THEMES

- Bowmanville Extension Completion date and updates
- Proposed station locations - Oshawa station locations
- Status of the project
- DSBRT interest into where the alignment is proposed in Whitby

NEXT STEP/LESSONS LEARNED

- Bring additional swag items and information on the DSBRT project
- Report back to Durham Region Transit that having representation from the region at the table is helpful for discussions with residents about local transit

TONE

8 (Positive Overall, friendly encounters with public)



Event Summary: Whitby Public Library - Whitby

Monday, February 27th, 2023

10:00 am - 12:00 pm

ATTENDEES

Justin Klimkait, Community Engagement Advisor, Durham Region

Number of visitors engaged: 25

Number of subscribers: 1

PRE-EVENT SAFETY REVIEW

Low Risk: In front of main lobby, MX, Durham Region Transit and Library staff on-site, no contentious issues (remain aware)

OVERVIEW

The Durham Community Engagement team held a pop-up at the Whitby Public Library. The location of the popup saw good and consistent foot traffic and we had over 25 meaningful interactions with residents from the area who had questions surrounding GO Expansion, Durham Region Transit connections, and the Bowmanville Expansion. Prior to the event the news was shared through our Twitter handle @GOExpansion with a great interaction level noticed.

During our pop-up, we also had a visit from a TTC bus driver who lives in Whitby and was able to provide some unique insights into the differences between TTC and DRT. There was also feedback received from residents regarding Durham Region Transit and to ensure that we work towards better synchronicity between GO Trains and DRT routes.

The Durham team was also joined again by a representative from Durham Regional Transit during pop-ups to help answer questions relevant to DRT and gather feedback. DRT's presence has been very positive for the events in February and has assisted in obtaining additional feedback. Overall, the pop-up was very positive overall, with visitors excited for improving transit connections through the GO Expansion program and future increased bus services with the DBSRT.

KEY QUESTION THEMES

- GO Expansion Project Overview
- DSBRT timelines and construction start dates
- Durham Region Transit connections and schedule adjustments

NEXT STEP/LESSONS LEARNED

- Bring additional Student Discount information as well as PRESTO information

TONE

8 (Positive, friendly encounters with public)

Event Summary: Garnet B. Rickard Arena - Bowmanville

Wednesday, March 8th, 2023

11:00 am - 1:00 pm

ATTENDEES

Justin Klimkait, Community Engagement Advisor, Durham Region

William Freeman King, Community Engagement Advisor, Durham Region

Number of visitors engaged: 18

Number of subscribers: 1

PRE-EVENT SAFETY REVIEW

Low Risk: In front of main lobby, MX and Town staff on-site, no contentious issues (remain aware)

OVERVIEW

The Durham Community Engagement team held their first pop-up at the Garnet B. Rickard Arena within Bowmanville. This location was selected due to its proximity to the proposed Bowmanville GO Station, as well as being along a main corridor (Highway 2) through the municipality.

Additionally, the team was able to coordinate to be present during the period of time when the GO VAXX bus was also present for a vaccination clinic which assisted in providing an additional draw on foot traffic to the arena. There was also an adult free skate period during the two-hour period that the team was present.

Throughout the pop-up, the team spoke with over 18 residents as well as staff members at the arena, with all interactions positive in nature. The team did note down that the traffic would likely increase in the evening hours however, considering the nature of the location being a community arena, and so will look to host pop-ups in the evening or weekends in the future. The arena also was the site of several community organizations, and the team was able to meet with some representatives as well as Town staff.

Prior to the event the news was shared through our Twitter handle @GOExpansion with a great interaction level noticed. Overall, the pop-up was very positive overall, with visitors excited for improving transit connections through the Bowmanville Extension and for any new information to come. Many residents took project postcards to be able to look for more information on the project.

KEY QUESTION THEMES

- Bowmanville Extension timelines and construction start dates

NEXT STEP/LESSONS LEARNED

- Attend the arena during the evening or weekend hours to ensure that our teams are present for when there is heavier foot traffic

TONE

9 (Positive, friendly encounters with public)



Event Summary: March Break Events – Clarington Library Branches

Tuesday, March 14th, 2023

Bowmanville Library Branch – 10:00am – 12:30pm

Courtice Library Branch – 2:00pm – 4:00pm

Thursday, March 16th, 2023

Bowmanville Library Branch – 10:00am – 12:00pm

Newcastle Library Branch – 1:00pm – 2:30pm

ATTENDEES

Justin Klimkait, Community Engagement Advisor, Durham Region

Emily Cameron, Community Engagement Advisor, York/Simcoe Region

Number of visitors engaged: 75

Number of subscribers: 10

PRE-EVENT SAFETY REVIEW

Low Risk: In front of main lobby/entrance to all libraries, MX and Town staff on-site, no contentious issues (remain aware)

OVERVIEW

The Durham Community Engagement team completed four pop-ups over the week of March Break, focused wholly within the Municipality of Clarington. The team was present at all three main Clarington Library locations in Bowmanville, Courtice, and Newcastle, targeting the ongoing March Break events for children and teens which were being held at the libraries. This was the result of previous feedback received by the team from residents within Newcastle and Courtice that they would also like the opportunity to come out to their local libraries to attend our community pop-ups.

Although the team saw less interaction with residents at the Newcastle and Courtice branches, the team will continue to look for more opportunities to be accessible to the larger population of Clarington. Regardless, due largely to the concurrent library events, the team had a generally steady flow of residents who stopped by to learn about the Bowmanville Extension project and to ask questions. The team was able to speak with over 75 residents and obtain 10 new subscribers throughout the week. One resident also provided a positive quote about the Lakeshore East rail service: "Thank you for being here, the train saves us daily!".

During the pop-up at Bowmanville branch, the team was also able to meet with Emily Corsi and Lisa Backus who are currently working on the Bowmanville West Urban Centre and GO Station Area Secondary Plan for Clarington which is ongoing.

Prior to the event the news was shared through our Twitter handle @GOExpansion with a great interaction level noticed. Overall, the pop-up was positive, with visitors

excited for improving transit connections through the Bowmanville Extension and for any new information to come. Many residents took project postcards to be able to look for more information on the project.

KEY QUESTION THEMES/QUOTES

- Bowmanville Extension timelines and construction start dates
- Upcoming public engagement opportunities
- "Thank you for being here, the train saves us daily!" – Bowmanville Library

NEXT STEP/LESSONS LEARNED

- Continue to locate additional events or locations for pop-ups throughout Clarington
- Continue to look for ongoing library events to attend during to increase traffic

TONE

9 (Positive, friendly encounters with public)





Event Summary: Oshawa Library McLaughlin and Whitby Central Library Branch
Oshawa Library McLaughlin Branch
Tuesday, March 21st, 2023
10:45am – 12:45pm

ATTENDEES

Justin Klimkait, Community Engagement Advisor, Durham Region
William Freeman King, Community Engagement Advisor, Durham Region

Number of visitors engaged: 22
Number of subscribers: 4

Whitby Central Library Branch
Thursday, March 23rd, 2023
10:00am – 12:00pm

ATTENDEES

Justin Klimkait, Community Engagement Advisor, Durham Region
Theresa Tran, Senior Manager, Community Engagement, Durham Region

Number of visitors engaged: 18
Number of subscribers: 3

PRE-EVENT SAFETY REVIEW

Low Risk: In front of main lobby/entrance to library, MX and Town staff on-site, Security on-site, no contentious issues (remain aware)

OVERVIEW

The Durham Community Engagement team completed a pop-up at the Oshawa Library and the Whitby Central Public Library this week. Both of these locations have proven to be good selections over time for a consistent flow of residents, located along main transit corridors.

Throughout the pop-ups the team was able to speak to 40 residents, many of which arrived via walking or via local transit. There were several questions with regard to the Bowmanville Extension project and the overall timeline and station locations, as well as residents who were just curious about all projects going on in Durham Region. There were also residents who stopped by to inquire about GO Bus/Train route connections or schedules, which the team was happy to assist in providing, showing the resident how to access tools such as triplinx.ca.

Following the pop-up at the Oshawa Library, the team was able to complete a construction notice drop to nearly 50 proximate residents within Ajax, to help with disruption management for upcoming works to bury overhead utilities which is

required to support the GO Expansion program. The team was able to speak with a handful of residents who were present during this time as well, all positive conversations.

Prior to the pop-ups, the news was shared through our Twitter handle @GOExpansion with a great interaction level noticed. Generally, the pop-ups were positive, with visitors excited for improving transit connections through the Bowmanville Extension and for any new information to come. Many residents took project postcards to be able to look for more information on the project. There was some negative feedback related to the DSBRT within downtown Whitby, however the team was happy to explain and answer any questions as well as provide as much information as possible to alleviate concerns.

KEY QUESTION THEMES

- Bowmanville Extension timelines and construction start dates
- DSBRT timeline and information
- GO Bus and Train routes and schedules
- Local transit (DRT) questions regarding schedules and connections

NEXT STEP/LESSONS LEARNED

- Continue to locate additional events or locations for pop-ups in evening hours
- Reach out to Durham Region Transit to ask for continued presence from DRT for questions related to local transit

TONE

8 (Positive, friendly encounters with public)

Event Summary: Pickering Public Library (George Ashe Branch) – Community Engagement Pop-Up

Tuesday, March 28th, 2023

11:00am-1:00pm

ATTENDEES

Justin Klimkait, Community Engagement Advisor, Durham Region

Emily Cameron, Community Engagement Advisor, York/Simcoe Region

Holly, Community Engagement, Durham Region Transit

Number of visitors engaged: 18

Number of new subscribers: 2

Set up:

- Table and three chairs from Pickering Library branches
- GO Expansion postcards
- Bowmanville Extension postcards
- Student discount postcards
- Newsletter poster with subscription QR code and signup sheet
- Existing GO Network Map
- Durham Region business cards
- GO Bear stickers and tattoos
- Metrolinx Frisbees
- Durham Region Transit Swag Items

PRE-EVENT SAFETY CHECK

Pickering Public Library Locations - Both Low Risk: open setting, multiple exits, MX and Library staff on-site, no contentious issues noticed (remained aware)

OVERVIEW

The Durham Community Engagement team hosted a drop-in pop-up booth at the George Ashe Branch along Highway 2. The events were posted within the previous e-newsletter blast sent out as well as was tweeted out on the GO Expansion handle. This tweet was retweeted by the City of Pickering as well as Pickering Library. This location has been a good location in terms of foot traffic and public interest in the various transit projects.

Throughout the day the number of visitors was consistent, with questions coming in regarding updates for the DSBRT project, GO Expansion, and Bowmanville Extension. As we were also joined by Holly from Durham Region Transit, she was able to answer questions related to local transit options and connections, as well as take feedback that residents provided.

MOVING THE NEEDLE - Being a Good Neighbour

The Durham community engagement team moved the needle on being a good neighbour by sharing information with residents on key projects as well as providing additional avenues for feedback and discussion to occur.

KEY QUESTION THEMES

- GO Expansion in Durham Region and what this entails
- Bowmanville Extension project updates and timelines
- DSBRT Project overview and design as well as timelines
- Various GO Bus and Durham Regional Transit Routes

LEARNINGS/NEXT STEPS:

- Continue to push events through e-newsletter/e-blasts and Twitter channels ahead of time to attract visitors

TONE

8 (Positive)

Event Summary: Ajax Public Library – Community Engagement Pop-Up

Monday, April 3rd, 2023

11:00am-1:00pm

ATTENDEES

Justin Klimkait, Community Engagement Advisor, Durham Region

Emily Cameron, Community Engagement Advisor, York/Simcoe Region

Holly, Community Engagement, Durham Region Transit

Number of visitors engaged: 20

Number of new subscribers: 2

Set up:

- Table and three chairs from Ajax Library
- GO Expansion postcards
- Bowmanville Extension postcards
- Student discount postcards
- Newsletter poster with subscription QR code and signup sheet
- Existing GO Network Map
- Durham Region business cards
- GO Bear stickers and tattoos
- Metrolinx Frisbees
- Durham Region Transit Swag Items

PRE-EVENT SAFETY CHECK

Ajax Public Library Locations - Both Low Risk: open setting, multiple exits, MX and Library staff on-site, no contentious issues noticed (remained aware)

OVERVIEW

The Durham Community Engagement team hosted a drop-in pop-up booth at the Ajax Public Library branch. The event was posted within the previous e-newsletter blast sent out as well as was tweeted out on the GO Expansion handle. This location also sees many transit users as well as significant interest from members of the public and staff members alike.

Throughout the day the number of visitors was generally consistent, with questions coming in regarding updates for the DSBRT project, GO Expansion, and Bowmanville Extension. There was some interest in recent construction which has occurred within Ajax for GO Expansion efforts along the LSE corridor as well as on Salem Road. Questions which were posed were answered and additional construction notices were handed out, if requested. Holly (Durham Region Transit) was also present to answer questions related to local transit options and connections, and also had some DRT swag items to give out to visitors to the table.

Overall, both of these pop-ups were very positive overall, with many visitors excited for improving transit connections through the GO Expansion program and future increased bus services with the DSBRT. Some visitors were happy to see the recent construction notices to support the future electrification of the rail corridors through the GO Expansion project, which they have been excited to see progress. Many visitors took the various postcards we had for more information, as well as some signed up for the Durham Region newsletter so as to keep updated.

MOVING THE NEEDLE – Being a Good Neighbour

The Durham community engagement team moved the needle on being a good neighbour by sharing information with residents on key projects, ongoing construction within Ajax, as well as providing additional avenues for feedback and discussion to occur.

KEY QUESTION THEMES

- GO Expansion in Durham Region and what this entails
- Bowmanville Extension project updates and timelines
- DSBRT Project overview and design as well as timelines
- Various GO Bus and Durham Regional Transit Routes
- How to utilize PRESTO

LEARNINGS/NEXT STEPS:

- Continue to push events through e-newsletter/e-blasts and Twitter channels ahead of time to attract visitors

TONE

8 (Positive)



Event Summary: Oshawa Library McLaughlin

Thursday, April 13th, 2023

11:00am – 1:00 pm

ATTENDEES

Justin Klimkait, Community Engagement Advisor, Durham Region

Emily Cameron, Community Engagement Advisor, York-Simcoe Region

Holly, Community Engagement, Durham Region Transit

Number of visitors engaged: 30

Number of subscribers: 8

Set up:

- Table and three chairs from Oshawa Library branches
- GO Expansion postcards
- Bowmanville Extension postcards
- Student discount postcards
- Newsletter poster with subscription QR code and signup sheet
- Existing GO Network Map
- Durham Region business cards
- GO Bear stickers and tattoos
- Metrolinx Frisbees
- Durham Region Transit Swag Items

PRE-EVENT SAFETY REVIEW

Low Risk: In front of main lobby/entrance to library, MX and Town staff on-site, Security on-site, no contentious issues (remain aware)

OVERVIEW

The Durham Community Engagement team completed a pop-up at the Oshawa Library this week. Prior to the pop-ups, the news was shared through our Twitter handle @GOExpansion with a great interaction level noticed. Upon arrival at the library, there were already members from the community who were eager to speak to our team, curious about a variety of transit initiatives within Durham Region. The main topics of questioning were surrounding the Bowmanville Extension (station locations, timelines, upcoming engagement opportunities) and the DSBRT (timeline, design). There were also residents who came by who were avid transit users and were excited to learn about the GO Expansion efforts along the LSE corridor.

Throughout the pop-ups the team was able to speak to 30 residents, many of which arrived via walking or via local transit. A large proportion of these residents signed up for the Durham Region e-newsletter as well, to stay up to date on the various projects. There were also residents who stopped by to inquire about GO Bus/Train

route connections or schedules, which the team was happy to assist in providing, showing the resident how to access triplinx.ca and showing them the trip planner postcards, we have.

One resident who came who was very interested in the Bowmanville Extension wanted a step by step walk through of the proposed alignment. The team was able to sit off to the side and work through the alignment using aerial imagery to show the resident where the location of the proposed railway and the proposed stations. This resident explained how she was very involved within Oshawa and was present at the recent Public Information Centre for the Simcoe Street Rapid Transit project. She expressed that there was some confusion among residents as to who was running the project and suggested that additional clarity be provided to ensure that residents have accurate information of proposed projects. There was also some confusion expressed over what the design was going to look like when completed. This feedback will be shared with the region and with municipal staff. Overall, while being an extended conversation covering several topics, the interaction ended very positively with the resident satisfied with our information and answers we were able to provide, signing up to our e-newsletter for future information.

MOVING THE NEEDLE - Being a Good Neighbour

The Durham community engagement team moved the needle on being a good neighbour by sharing information with residents on key projects, as well as providing additional avenues for feedback and discussion to occur.

KEY QUESTION THEMES

- Bowmanville Extension timelines and construction start dates
- DSBRT timeline and information
- GO Bus and Train routes and schedules
- Local transit (DRT) questions regarding schedules and connections

NEXT STEP/LESSONS LEARNED

- Continue to locate additional events or locations for pop-ups in evening hours
- Reach out to Durham Region Transit to ask for continued presence from DRT for questions related to local transit
- Reach out to region and municipality to provide feedback received by residents

TONE

8 (Positive, friendly encounters with public)

Event Summary: Chestnut Hill Developments Community Centre - Community Engagement Pop-Up

Wednesday, April 19th, 2023

4:30pm-7:00pm

ATTENDEES

Justin Klimkait, Community Engagement Advisor, Durham Region

Emily Cameron, Community Engagement Advisor, York/Simcoe Region

Number of visitors engaged: 30

Number of new subscribers: 4

Set up:

- Table and three chairs from Community Centre
- GO Expansion postcards
- Bowmanville Extension postcards
- Roll Maps for DSBRT Preliminary Design – Pickering Village Area
- Student discount postcards
- Newsletter poster with subscription QR code and signup sheet
- Existing GO Network Map
- Durham Region business cards
- GO Bear stickers and tattoos
- Metrolinx Frisbees
- Durham Region Transit Swag Items

PRE-EVENT SAFETY CHECK

Pickering Community Centre Location - Both Low Risk: open setting, multiple exits, MX and Pickering staff on-site, no contentious issues noticed (remained aware)

OVERVIEW

The Durham Community Engagement Team conducted a pop-up at the Pickering Chestnut Hill Developments Recreation Complex. The pop-up was held in the evening hours which was the result of municipal and community members' requests for evening and weekend information tables so as to work for multiple work schedules and to be able to talk to many different cohorts which may not be able to during the day.

The popup attracted several residents and staff members who inquired about the projects within Durham Region, with a focus on the DSBRT. The team provided detailed answers to many of the questions, assisted by physical roll maps they printed out from the website of the preliminary design for the DSBRT in the Pickering Village area. These were very helpful to be able to provide a visual for residents to see what the preliminary design looked like. Throughout the evening the number of visitors was

consistent, with questions coming in regarding updates for the GO Expansion and Bowmanville Extension projects as well.

One of the visitors in particular was a large transit supporter, currently a student, and was very excited to hear about the projects coming to the area which will help to provide additional options for residents. Additionally, Ward 3 City Councillor Butt attended further into the evening and brought about some additional feedback with regard to bus shelters and accessibility, noting that bus shelters should be heated and better maintained. This information will be passed along to DRT as the bus shelters in question were for the DRT service.

KEY QUESTION THEMES

- GO Expansion and recent construction notices
- Bowmanville Extension project updates and timelines
- DSBRT Project overview and preliminary design for the area

LEARNINGS/NEXT STEPS:

- Bring about feedback to internal teams and external partners

TONE

8 (Positive)

Event Summary: Whitby Public Library – Community Engagement Pop-Up

Thursday, April 20th, 2023

11:00am-1:00pm

ATTENDEES

Laura Adams, Director, Community Engagement East

Justin Klimkait, Community Engagement Advisor, Durham Region

Holly, Community Engagement, Durham Region Transit

Number of visitors engaged: 12

Number of new subscribers: 1

Set up:

- Table and three chairs from Whitby Library
- GO Expansion postcards
- Bowmanville Extension postcards
- Student discount postcards
- Newsletter poster with subscription QR code and signup sheet
- Existing GO Network Map
- Durham Region business cards
- GO Bear stickers and tattoos
- Metrolinx Frisbees
- Durham Region Transit Swag Items

PRE-EVENT SAFETY CHECK

Whitby Public Library Locations - Both Low Risk: open setting, multiple exits, MX and Library staff on-site, no contentious issues noticed (remained aware)

OVERVIEW

The Durham Community Engagement team hosted a drop-in pop-up booth at the Whitby Public Library branch. The event was posted within the previous e-newsletter blast sent out as well as was tweeted out on the GO Expansion handle. This location has historically seen many transit users as well as significant interest from members of the public and staff members alike.

Throughout the day the number of visitors was lower than normal, however the team did receive some with questions coming in regarding updates for the GO Expansion and Bowmanville Extension projects. Holly (Durham Region Transit) was also present to answer questions related to local transit options and connections, and also had some DRT swag items to give out to visitors to the table.

Overall, both of these pop-ups were very positive overall, with many visitors excited for improving transit connections through the GO Expansion program and future increased bus services with the DBSRT. Some visitors were happy to see the recent construction notices to support the future electrification of the rail corridors through

the GO Expansion project, which they have been excited to see progress. Many visitors took the various postcards we had for more information, as well as some signed up for the Durham Region newsletter so as to keep updated. Traffic should pick up in the future within the Whitby Library as well, with the corresponding Whitby Farmers' Market which begins in late May.

KEY QUESTION THEMES

- GO Expansion in Durham Region and what this entails
- Bowmanville Extension project updates and timelines
- How to utilize PRESTO

LEARNINGS/NEXT STEPS:

- Continue to push events through e-newsletter/e-blasts and Twitter channels ahead of time to attract visitors

TONE

8 (Positive)

Event Summary: Clarington Library – Bowmanville Branch

Tuesday, April 25th, 2023

11:00am-1:00pm

ATTENDEES

Justin Klimkait, Community Engagement Advisor, Durham Region

Holly, Community Engagement, Durham Region Transit

Number of visitors engaged: 22

Number of new subscribers: 2

Set up:

- Table and two chairs from Clarington Library
- GO Expansion postcards
- Bowmanville Extension postcards
- Student discount postcards
- Newsletter poster with subscription QR code and signup sheet
- Existing GO Network Map
- Durham Region business cards
- GO Bear stickers and tattoos
- Durham Region Transit Swag Items

PRE-EVENT SAFETY CHECK

Clarington Library Location - Low Risk: open setting, multiple exits, MX and DRT staff on-site, no contentious issues noticed (remained aware)

OVERVIEW

The Durham Community Engagement team hosted a drop-in information pop-up booth at the Clarington Library Bowmanville Branch last week. The pop-up saw steady traffic throughout the day, with visitors curious about the Bowmanville Extension and on the timelines for the project. The presence of Holly from Durham Region Transit was also helpful for Durham Region transit related questions and comments. The team was also able to speak again with a returning transit advocate who had come by previous events at the library. This resident is member of multiple active transportation and transit committees and groups in the Clarington area and is an avid cyclist. While we were not able to provide over new information on the Bowmanville Extension, they were happy to see our team in the community again and excited to hear about our upcoming presence at the 2023 Bowmanville Maplefest on May 6th, which is highly anticipated festival in Bowmanville.

KEY QUESTION THEMES

- Bowmanville Extension project updates and timelines
- Durham Region Transit routes and questions

LEARNINGS/NEXT STEPS:

- Identify additional transit advocates in the community and gauge interest for potential future community stakeholder meetings

tone

9 (Positive)

Event Summary: Bowmanville Maplefest

Saturday, May 6th, 2023

8:30am - 5:00pm

ATTENDEES

Justin Klimkait, Community Engagement Advisor

William Freeman King, Community Engagement Advisor

Number of visitors engaged: 345

Number of new subscribers: 10

Set up:

- Table and two chairs, Metrolinx Tablecloth, Metrolinx Tent
- Bowmanville Extension postcards
- GO Expansion postcards
- Student discount postcards
- Durham Region CE business cards
- Plan your trip pamphlets
- Newsletter poster with subscription QR code and signup sheet
- Existing GO Network Map
- Metrolinx Swag Items - Frisbees, stickers, tattoos, pens
- Durham Region business cards

PRE-EVENT SAFETY CHECK

Outdoor Downtown Bowmanville location - Low Risk: open setting, multiple exits, road closed off, MX and event organizer staff on-site, no contentious issues noticed (remained aware)

OVERVIEW

The Durham Community Engagement Team was able to attend the annual Bowmanville Maplefest, held in the Historic Downtown Bowmanville on the first Saturday in May. This highly anticipated festival showcases many of the local syrup producers who offer up the best of the region. The event closes down four city blocks with a variety of craft and food vendors as well as live music. This event was in follow up to our attendance in Fall 2022 to the Bowmanville Applefest which was a great success.

Our team arrived in early and setup a tent and a booth just off of the main street beside an Ontario Power Generation and local ski hill booth. Throughout the day we were able to speak with approximately 345 residents, local elected officials and staff, and visitors to the town for the event. The team was able to speak with Durham Region staff as well who will be soon sending new community ambassadors to join us at various pop-ups in the region. Throughout the day, foot traffic to the table was very

consistent, with many of the visitors drawn to the table to take away a cut-out train or GO Bear sticker from our table for themselves or for their kids.

With the assistance of the great weather, the team had largely very positive interactions and engaged in well over 50 in-depth conversations, mostly surrounding the Bowmanville Extension project. While we did not have much new information to share with visitors on the project, many people were happy to see us out there and looking forward to the works beginning on the Bowmanville Extension.

During the day the Durham team was also surprised by a group of colleagues who also work on the Bowmanville Extension project from other Metrolinx teams, who stopped by with their families to help support our efforts throughout the day. As the team continued to talk with visitors, we were able to take down several pieces of feedback, which has since been shared internally to relevant teams, as well as provided our CE business card to visitors if they had any follow up questions to ask. Additionally, our team was able to take several videos and pictures to help support video based social media posts.

Overall, the event was a great success and saw thousands of attendees. With the weather being excellent as well, visitors were able to take their time browsing throughout the historic core.

This is definitely an event that the team will be returning for next year!

MOVING THE NEEDLE

Being a Good Neighbour

By setting up a tent during this very popular event, we were able to establish a good community presence within Bowmanville and strengthen our rapport as we begin into next steps on the Bowmanville Extension project. Residents were able to come and speak to us face-to-face, to learn about the project, to ask questions, or to bring forward a complaint or suggestion that they might have. Continued physical presence at events such as this is important to continue to move the needle forward!

KEY QUESTION THEMES

- Bowmanville Extension project updates and timelines
- GO Expansion in Durham Region and what this entails
- How to use PRESTO, Triplinx, and info on various bus routes

LEARNINGS/NEXT STEPS:

- Pre-load tablets with websites such as Triplinx to help residents or visitors in terms of finding the best routes to take
- Plan to have additional swag items to account for the increased traffic and the type of audience we will be encountering

TONE
9 (Very Positive)



From: Annie Gu
Sent: Thursday, May 25, 2023 12:36 PM
To: Andreas Grammenz
Cc: Steve Rowe - Hatch (steve.rowe@hatch.com); Theresa Tran; Justin Klimkait; Jeff Yee; Irfan Ahmad; Jilesh Patel
Subject: BMV - Metrolinx | CPKCR - Bowmanville Extension EPR Addendum Public Information Centre and Engagement Strategy

Good afternoon Andreas,

Kindly find below a meeting summary of the May 12, 2023 meeting with Metrolinx and CPKCR. Let me know within a week if you have any comments. Please distribute internally. Thank you

Meeting Purpose: Metrolinx | CPKCR - Bowmanville Rail Extension EPR Addendum Public Information Centre and Engagement Strategy

Date & Time: May 12, 2023, 1:30-2:00PM

Attendance:

CPKCR:

Fittipauld Lorenzo – Manager, Government Affairs
Stacy Patenaude – Manager, Government Affairs and Communications, East
Liam Roney – Director, Interline and Passenger, East
Andreas Grammenz – Senior Project Manager, Projects & Public Works, East
Steve Rowe (CP External TA) – Senior Track Consultant, Hatch

Metrolinx (Mx):

Theresa Tran - Senior Manager, Community Engagement, Durham
Laura Adams - Director Community Engagement, East
Jeff Yee – Senior Manager, Line Extensions
Annie Gu – Project Coordinator, Line Extensions
Jonathan Wilder – Senior Manager, Commercial Management, Third Party Railways
Jennifer Wong – Specialist, Commercial Management, Third Party Railways
Shelley Persaud – Sponsor, Lakeshore East and Extensions
David Phalp – Senior Advisor, Lakeshore Sponsor Team

Discussion:

- Mx held the meeting to brief CPKCR on Mx's upcoming Public Information Centre (PIC) and present the PIC schedule and content before socializing with the public audience.
- Mx also previewed the elected officials, stakeholders and general public engagement strategies.
- Mx noted the PIC materials shared with CPKCR are not publicly accessible yet and requests CPKCR to keep it confidential.
- Mx advised the PIC will be held June 8-21 at which time PIC materials will be made available for public review, comment, and question.
- Mx advised the Virtual Open House (VOH) to present the EPR Addendum key findings will be held on June 14. The event will also be open to questions from the public.
- Mx communication channels to socialise the PIC period and VOH were summarized – i.e. newspaper, social media, announcement on trains, festival and other public events. Notices will start week of May 23.

- Mx presented a slide-by-slide, high-level overview of the PIC presentation. Mx noted supplementary PIC materials containing additional details and key findings of the EPR Addendum were also shared with CPKCR in the meeting calendar invite and through separate emails.
- Mx requested CPKCR to advise when any public inquiries related to the project and PIC are received.
 - Mx advised the public can be directed to Mx's Community Engagement team contact (post meeting note: Mx requests CPKCR to direct inquiries to the Mx Community Engagement Durham Region mailbox at DurhamRegion@metrolinx.com)
- CPKCR raised a question to Mx regarding how property effects and potential acquisition will be communicated to the public during the PIC
 - Mx advised high-level mapping illustrating property effects are presented in the supplementary PIC materials. Maps provide an overall roll plan.
 - Mx also noted that Mx will contact individual owners regarding property acquisition engagement at the appropriate time.
- Mx asked CPKCR to advise of the appropriate contacts to address public inquiries related to CPKCR.
 - CPKCR advised public inquiries can be direct to their "Community Connect" team (post-meeting note: this is the link to the website form <https://www.cpr.ca/en/contact-us/community-connect-form>).

Annie Gu, P.Eng.

Project Coordinator, GO Line Extensions

Metrolinx

C: (647) 248-7386

E: annie.gu@metrolinx.com



Event Summary: Bowmanville Farmers Market
Garnet B Rickard Recreational Complex – 2440 Highway 2, Bowmanville

Friday July 21, 2023
7:45am -3:00pm

ATTENDEES

Metrolinx

Greg Johnston – Community Relations Advisor, Durham Region
Justin Klimkait – Community Relations Advisor, Durham Region

Number of participants: 61

PRE-EVENT SAFETY REVIEW

Low Risk: Open air setting, numerous community participants in a city owned parking lot

OVERVIEW:

The Bowmanville Farmers Market had 50 registered vendors on July 21st 2023. The market featured numerous small businesses from the surrounding area participating. We had a diverse group of attendees with a wide range of ages from seniors to small children. Discussions included all major transit projects in Durham Region including GO Expansion, and the Bowmanville Extension. The discussions were mostly focused on the Bowmanville Rail Extension. Visitors were mostly positive about Metrolinx with most concerns revolving around timeframe and project completion. Despite the moments of rain the event was well attended with a large number of vendors.

SET UP:

- Set up tent and table with Metrolinx project specific literature for distribution
- Built cardboard trains for kids (14)
- Handed out Metrolinx project postcards to provide customers with information on the various projects in their region

KEY QUESTIONS

- How to put a concession on a Presto card ?
- When will express rail service resume for Lakeshore East ?
- How do I purchase an E-Ticket ? How much is it ?
- When will the Bowmanville Extension be completed ?
- Where will the Clarington area stations be located ?
- Will the new stations include parking ?

NEXT STEP:

- Planned future events with the Bowmanville Farmers Market for August 18, 2023

LEARNINGS:

- Customers interested in when the Bowmanville extension will begin and be completed
- Customers are interested in when they will have their express GO rail service resume
- Service maps were in high demand as passengers were curious where they could travel
- People were curious where the location of the Bowmanville extension stations would be located. Most had heard of the project but most were unfamiliar with the quantity and location of the proposed stations.

Moving the Needle:

Community: It is important for Metrolinx to hold a presence in the community and be seen as a good neighbour. To do this we align our community engagement efforts with events that are important to the communities we work within. Joining with the Bowmanville Farmers Market organizers at a town owned facility we were able to capture a broad spectrum of regular and irregular riders. In addition we were able to engage with various rider groups from students to seniors. With over 60 engagements we were able to address issues, highlight Durham Region transit projects, and assist customers with Presto/fare issues.

Transforming the Region: Outlining the benefits of transit investment in various projects within the community. Using this opportunity to highlight the positive impacts of increase transit usage to the growing communities we serve. These conversations help to increase community support and assist in building a positive brand image. Discussions around rail expansion and the Bowmanville extension to meet the needs of a region that is growing and expanding. Focusing our discussions on future service and how Metrolinx plans to meet the needs of the community. Building a positive relationship and increasing awareness of project development by adding transit riders to our e-newsletter to keep them informed.

tone

8 (Positive Overall, good feedback from participants and good discussion about all Transit projects in Durham. Bowmanville residents seemed to have more skepticism about project completion)

Event Summary: Oshawa Library McLaughlin Branch Oshawa Public Library

Monday July 24, 2023
10:00am -2:00pm

ATTENDEES

Metrolinx

Greg Johnston - Community Relations Advisor, Durham Region
Justin Klimkait - Community Relations Advisor, Durham Region

Number of participants: 30

PRE-EVENT SAFETY REVIEW

Low Risk: Inside the library, high visibility of various visitors to the library

OVERVIEW:

We had a diverse group of attendees with a high percentage of visitors being seniors. Discussions included all major transit projects in Durham Region including GO Expansion, DSBRT, and the Bowmanville Extension. The discussions were mostly focused on the Bowmanville Rail Extension. Visitors were mostly positive about Metrolinx with most concerns revolving around timeframe and project completion. Being inside the library we were able to have several in depth conversations with patrons who asked various questions about the projects. People were positive about the proposed Howard Street Station near Downtown Oshawa with potential to improve the area.

SET UP:

- Set up at a table in the foyer of the library
- Built cardboard trains for kids (4)
- Handed out Metrolinx project postcards to provide customers with information on the various projects in their region

KEY QUESTIONS

- When will express rail service resume for Lakeshore East ?
- When will the Bowmanville Extension be completed ?
- Where will the Oshawa stations be located ?
- Will the new stations include parking ?

NEXT STEP:

- Planned future events with the Oshawa Public Library August 8, 2023

LEARNINGS:

- People wanted information on how to buy e-tickets
- People were curious where the location of the Bowmanville extension stations would be located.
- The proposed Thornton Corners station seemed to be the station that most customers were unaware was part of the Bowmanville extension

Moving the Needle:

Community: It is important for Metrolinx to hold a presence in the community and be seen as a good neighbour. To do this we align our community engagement efforts with events that are important to the communities we work within. Joining with the Oshawa Public Library we were able to capture a broad spectrum of regular and irregular riders. In addition we were able to engage with a high percentage of seniors. With 30 engagements we were able to address issues, highlight Durham Region transit projects, and assist customers with Presto/fare issues. This engagement is also a positive step for our engagement with elected officials as Councillor Tito-Dante Mariempietri is on the Oshawa Public Library Board. We also had the opportunity to talk to Francis Newman the CEO of Oshawa Public Library about future partnerships.

Transforming the Region: Outlining the benefits of transit investment in various projects within the community. Using this opportunity to highlight the positive impacts of increase transit usage to the growing communities we serve. These conversations help to increase community support and assist in building a positive brand image. Discussions around rail expansion and the Bowmanville extension to meet the needs of a region that is growing and expanding. Focusing our discussions on future service and how Metrolinx plans to meet the needs of the community. Building a positive relationship and increasing awareness of project development by adding transit riders to our e-newsletter to keep them informed.

TONE

9 (Positive Overall, good feedback from participants and good discussion about all Transit projects in Durham.)

Bowmanville Extension



Alderville First Nation

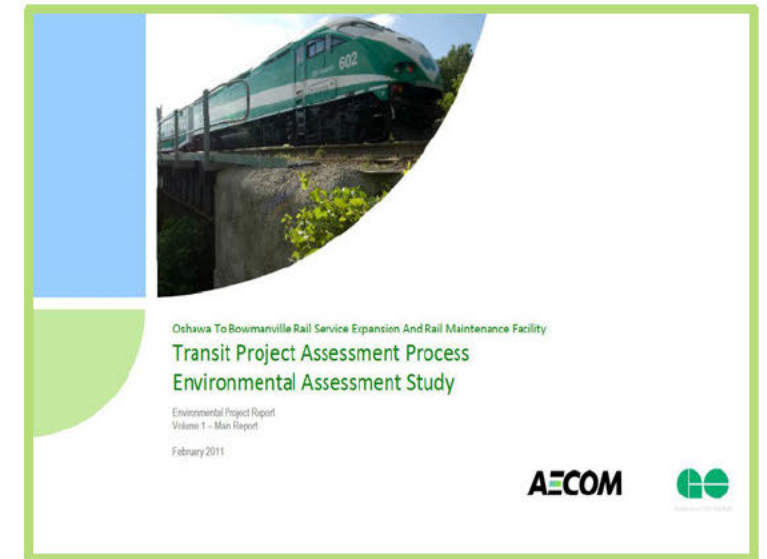
AGENDA

1. Introductions
2. Project Background
3. Engagement To-Date
4. Environmental Studies & Commitments To-date
 - Natural Environment
 - Tree Inventory
 - Cultural Heritage
 - Archaeological Assessment
5. Engagement in the near Future
6. Discussion

PROJECT BACKGROUND

The Oshawa to Bowmanville Rail Service Extension (the Project) will include the extension of GO rail services from the Durham College Oshawa GO Station (formerly Oshawa GO Station) to the proposed Bowmanville GO Station, including four new proposed GO stations.

- In 2011, Metrolinx completed initial planning for the Project by preparing the *Oshawa to Bowmanville Rail Service Expansion and Rail Maintenance Facility* Environmental Project Report (EPR).
- Since the completion of the Environmental Project Report, Metrolinx has advanced the design of the Project through additional feasibility work, which has included changes to:
 - Track Alignment
 - Bridges, at-grade crossing and culvert requirements
 - Relocation of Thornton's Corners East GO Station
 - Relocation of Rundle Road Layover to Bowmanville GO Station



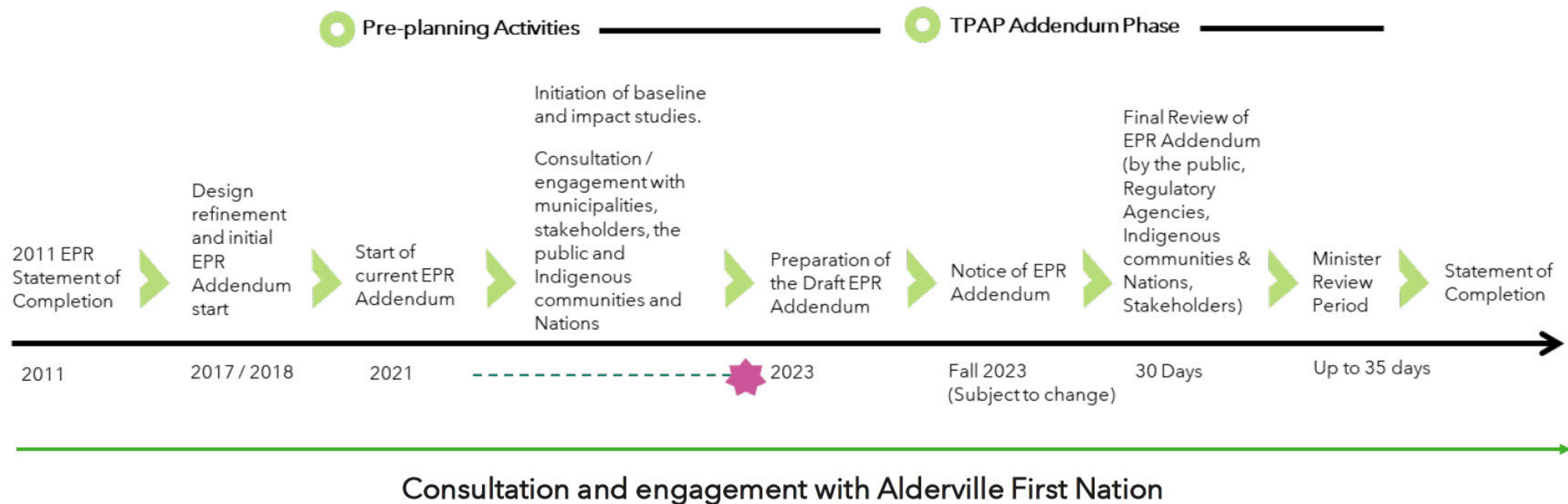
PROJECT ALIGNMENT - OSHAWA SEGMENT



PROJECT ALIGNMENT - CLARINGTON SEGMENT



THE TRANSIT PROJECT ASSESSMENT AND ADDENDUM PROCESS



ENGAGEMENT TO-DATE

Environmental Project Report and Addendum	
July 2010 - April 2011	Engagement related to 2011 Environmental Project Report
March 24, 2021	Introduction Letter to the Environmental Project Report Addendum
August 10, 2021	Draft Stage 1 Archaeological Assessment report and invitation to participate in Stage 2 Archaeological Assessment fieldwork
September 21, 2021	Invitation to participate in Stage 2 Archaeological Assessment fieldwork. Metrolinx sent a follow-up that this was postponed on October 6, 2021.
October 22, 2021	Draft Arborist Report (450 Fox Street), draft Tree Inventory Report and draft Cultural Heritage Report
December 9, 2021	Draft Cultural Heritage Evaluation Reports for Albert Street Bridge and Farewell Street Bridge and draft Natural Environment Technical Report
March 17, 2022	Draft Limited Phase I Environmental Site Assessment Report and offer to review draft Noise and Vibration Report, draft Traffic Impact Analysis Report, and draft Socio-Economic and Land Use Characteristics Assessment Report
April 21, 2022	Upcoming Notice of Environmental Project Report Addendum, invitation to participate in Arborist, Tree Inventory, Natural Environment and Stage 2 Archeological Assessment fieldwork. Follow-up for Stage 2 Archeological Assessment sent on June 28, 2022.

ENGAGEMENT TO-DATE (CONTINUED)

Environmental Project Report and Addendum	
May 10, 2022	Draft 90 % Environmental Project Report Addendum
April 18, 2023	Project Update Letter - Increase in footprint and additional environmental studies. Fourteen (14) draft Cultural Heritage Evaluation Reports offered for review. Follow-up with updated Cultural Heritage Report, second Stage 1 Archaeological Assessment for additional footprint and original Stage 1 Archaeological Assessment sent on May 11, 2023.
April 28, 2023	Invitation to participate in bat surveys, tree inventory/arborist fieldwork, camera trapping and electrofishing. Follow-up sent on May 4, 2023.
May 17, 2023	Notice of Public Information Centre and invitation for community meeting in June 2023, including Virtual Live Event on June 14, 2023

ENVIRONMENTAL STUDIES

- Environmental studies document existing conditions, assess potential construction or operational impacts from the Project, and identify mitigation measures to reduce or eliminate potential impacts.
- Study recommendations and identified mitigation measures will be used by the design team to support Project design.
- The studies mentioned below form part of the Environmental Project Report Addendum that will be posted for a 30-day public review.
- Metrolinx is committed to fulfilling its consultation obligations for this project and welcomes Alderville First Nation's review of environmental reports.



• Natural Environment Technical Report



• Tree Inventory Technical Report



• Air Quality Technical Report



• Noise & Vibration Technical Report



• Traffic Impact Analysis



• Socio-Economic and Land Use Characteristics Assessment



• Cultural Heritage Report
• Cultural Heritage Evaluation Reports
• Cultural Heritage Evaluation Recommendation Reports



• Stage 1 Archaeological Assessment



• Geology and Groundwater



• Stormwater Management



NATURAL ENVIRONMENT

The Natural Environmental Assessment Area is comprised of the Project Footprint plus an additional 120 metres from the perimeter of the Project Footprint and an additional 500 metres from the approximate centre point of the GO station locations. The Assessment Area is largely urbanized with signs of disturbance and consisting of an abundance of invasive species.

- Species at Risk confirmed through direct observations during site visits in the Project Footprint include:

Little Brown Myotis, Bobolink, Eastern Meadowlark and Butternut*

- Fish community and fish habitat conditions were documented at 14 watercourse crossing locations. Some watercourse crossings provide important migration routes between Lake Ontario and headwater reaches.
- Currently, there is electrofishing, headwater drainage feature studies and camera trapping underway at several of the watercourses.

Engagement To-Date:

- Invite to participate in bat surveys, electrofishing and camera trapping fieldwork.
- Draft Natural Environment Report submitted for review and comment

Project's Potential Effects:

- Disturbance, displacement or mortality of wildlife.
- Removal of and/or damage to aquatic/terrestrial vegetation and wetlands.

Mitigation Measures:

- All requirements of the *Migratory Birds Convention Act*, *Endangered Species Act*, *Species at Risk Act*, and the *Fisheries Act* will be met.
- Sensitive wildlife timing restrictions will be followed for construction activities (e.g., removal of vegetation outside of the breeding bird season).
- Erosion and sediment control plans and wildlife exclusion measures will be implemented protect fish, wildlife and their habitat.



NATURAL ENVIRONMENT (CONTINUED)

Commitments To-date:

- Complete additional environmental studies (headwater drainage feature, electrofishing, and camera trapping), which is currently underway.
- The species observed on site are:

Avifauna Records and Observations

- | | |
|----------------------|--------------------------|
| • American Goldfinch | • Hairy Woodpecker |
| • Barn Swallow | • Killdeer |
| • Blue Jay | • Mourning Dove |
| • Eastern Meadowlark | • Northern Cardinal |
| • Field Sparrow | • Rose-breasted Grosbeak |
| • Great Blue Heron | • Red-winged Blackbird |
| • Song Sparrow | • Western Tanager |
| • Wild Turkey | • Wood Duck |
| • Wood Thrush | |

Herpetofauna Records and Observations

- | | |
|-------------------------|-------------------|
| • American Bullfrog | • Snapping Turtle |
| • Eastern Garter snake | • Spring Peeper |
| • Northern Leopard Frog | |

Mammals Records and Observations

- | | |
|-------------------------|---------------------|
| • Eastern Gray Squirrel | • White-tailed Deer |
| • Northern Raccoon | • Woodchuck |
| • Striped Skunk | |

Fish Records and Observations

- | | |
|------------------|-------------------|
| • American Eel | • Smallmouth Bass |
| • Rainbow Darter | • White Sucker |
| • Sea Lamprey | • Yellow Perch |
| • Northern Pike | • Walleye |

- Documents to be developed:
 - Invasive Management Plan
 - Amphibian and Reptile Management Plans
 - Vegetation/Tree Restoration and Planting Plans
 - Wildlife Exclusionary Fencing Designs
 - Erosion and Sediment Plan



TREE INVENTORY

The Tree Inventory Assessment Area is comprised of the Project Footprint plus any tree dripline that intersected with the plane of the area impacted. Over 3,800 trees and numerous vegetation units were inventoried during fieldwork to-date.

- Potential pure Butternut trees (a Species at Risk) are within the Project Footprint; genetic testing is currently underway to confirm whether the trees are pure Butternut or hybrid.
- Arborist Reports are currently underway. Draft report should be circulated in Fall 2023 for review.

Engagement To-Date:

- Invite to participate in tree inventory/arborist fieldwork.
- Tree Inventory and 450 Fox Arborist Report submitted for feedback

Project's Potential Effects:

- Tree removals and damage to trees during construction, including soil compaction, root damage and mechanical damage.
- Disturbance or displacement of wildlife during vegetation maintenance activities.

Mitigation Measures:

- Vegetation removal will be avoided and reduced to the greatest extent possible and limited within areas affected by construction activities.
- Compensation for tree removals and vegetation will be undertaken in accordance with the Metrolinx Vegetation Guideline (2022) and subsequent amendments.
- Wildlife timing restrictions will be followed for operational maintenance activities (e.g., removal of vegetation outside of the breeding bird season).
- All requirements of the *Endangered Species Act* and *Migratory Birds Convention Act* will be met.

Commitments To-date:

Documents to be developed:

- Invasive Management Plans
- Vegetation Restoration and Planting Plans



CULTURAL HERITAGE

The Cultural Heritage Assessment Area is comprised of the Project Footprint plus an additional 50 metres from the perimeter of the Project Footprint and an additional 500 metres from the approximate centre point of the GO station locations.

Engagement To-Date:

- Cultural Heritage Report submitted for feedback
- Cultural Heritage Evaluation Reports for Albert Street Bridge and Farewell Street Bridge submitted for feedback
- Cultural Heritage Evaluation Reports for the following properties offered for review:
 - 394 Simcoe Street South, Oshawa ON
 - 399 Simcoe Street South, Oshawa ON
 - 356 Ritson Road South, Oshawa ON
 - 470 Ritson Road South, Oshawa ON
 - 349 Ritson Road South, Oshawa ON
 - 374 Farewell Street, Oshawa ON
 - 1766 Baseline Road, Clarington ON
 - 83 Avenue Street, Oshawa ON
 - 359 Ritson Road South, Oshawa ON
 - 464 Ritson Road South, Oshawa ON
 - St. Wolodymyr and St. Olha Ukrainian Cemetery, Clarington ON
 - 1598 / 1604 / 1558 / 1580 Baseline Road, Clarington ON
 - 2228 Baseline Road, Clarington ON
 - 1490 Baseline Road, Clarington ON

Commitments To-date:

- If any Cultural Heritage Landscapes are identified by Indigenous communities and Nations, Metrolinx will continue to work with the Indigenous community or Nation to evaluate Cultural Heritage Landscapes



CULTURAL HERITAGE (CONTINUED)

Project's Potential Effects:

- There is potential for indirect impacts where vibration caused by construction activities may affect a Built Heritage Resource/Cultural Heritage Landscape.
- There is potential of direct impacts to the following heritage resources:
 - The Provincial Heritage Property of Provincial Significance located at 500 Howard Street, Oshawa due to potential alteration and demolition.
 - The Albert Street Bridge is currently listed on the *Heritage Oshawa Inventory* as a "Class A" heritage property. The bridge is proposed to be removed.
 - The Farewell Street Multi-Use Bridge is proposed to be replaced.
 - Select properties within the Project Footprint at Avenue Street, Simcoe Street South, Ritson Road South and Farewell Street in the City of Oshawa; St. Wolodymyr and St. Olha Ukrainian Cemetery and Baseline Road in the Municipality of Clarington.
 - Vibration effects to Built Heritage Resources/Cultural Heritage Landscapes are not anticipated during operations.

Mitigation Measures:

- Built heritage resources shall be avoided by establishing a buffer zone around the resource. If avoidance is not feasible, a pre-construction vibration monitoring assessment within the buffer zone is recommended.
- Construction planning such as maintaining setback distance and using less impactful equipment are recommended.
- Consent from the Minister of Citizenship and Multiculturalism is required to remove or demolish a provincial heritage property of provincial significance. Minister's Consent has been received for the partial alteration and demolition of the structure at 500 Howard Street, Oshawa.
- All built heritage requirements will be addressed for the removal of Albert Street Bridge and replacement of Farewell Street Bridge.
- Further cultural heritage assessments are ongoing as part of the Environmental Project Report Addendum to confirm the potential for effects to cultural heritage resources and appropriate mitigation measures.



ARCHAEOLOGICAL ASSESSMENT

The Assessment Area for the Stage 1 Archaeological Assessment is comprised of the Project Footprint plus 20 metres from the perimeter of the rail alignment, 70 metres from the perimeter of at-grade crossings and bridges and 500 metres from the approximate centre point of the GO station locations.

Approximately half of the Assessment Area contains archaeological potential based on the Stage 1 Archaeological Assessment. The potential of archaeological resources will require further archaeological assessments.

Engagement To-Date:

- Stage 1 Archaeological Assessment Drafts submitted for review and comment.
- Invitation to participate to Stage 2 Archaeological Assessment fieldwork.

Project's Potential Effects:

- Disturbance of unassessed or undocumented archaeological resources during construction.
- Potential direct impacts to a small area along the boundary of the St. Wolodymyr and St. Olha Ukrainian Cemetery directly adjacent to Prestonvale Road, Clarington and the railway corridor, which is located within the Project Footprint.

Mitigation Measures:

- Further archaeological assessment is currently underway, including Stage 2 Archaeological Assessments. Approximately, 50% of the fieldwork has been completed to-date.
- Work will stop if unexpected archaeological materials are encountered (or suspected) at a location and the site will be assessed by a licensed archaeologist.

Commitments To-Date:

- Archaeological Assessment findings will be shared, as per Metrolinx procedures.

ENGAGEMENT IN NEAR FUTURE

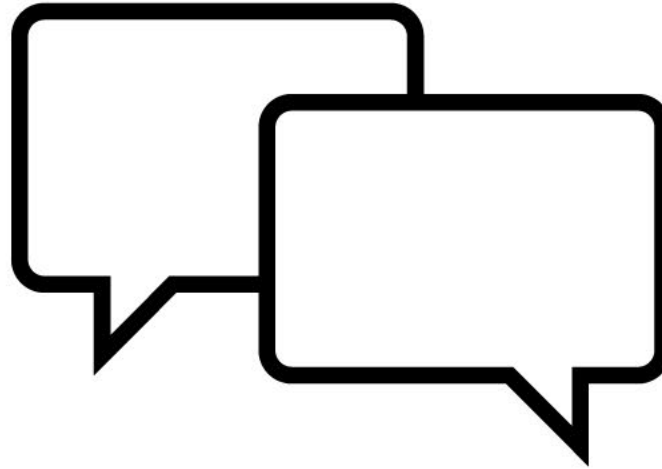
Engagement with Alderville First Nation will continue throughout this project:

- 30-Day Review of Environmental Project Report Addendum Fall 2023.
- Draft review of Tree Inventory and Arborist Reports in Fall 2023.
- Draft Stage 2 Archaeological Assessment Report submitted for review and comment in Fall/Winter 2023/2024.
- Vegetation restoration and planting plans submitted for review and comment Fall/Winter 2023/2024.

Additional commitments to-date:

- Committed to continue discussions about Cultural Keystone Species in the project area, and more specifically, mitigation and monitoring plans, including the timing windows that should be respected for work in different areas to limit possible impacts on harvesting activities.

DISCUSSION





Event Summary: Oshawa Library – Delpark Branch

Tuesday, August 8, 2023

Delpark Branch Oshawa Public Library from 10:00 am – 2:00 pm

ATTENDEES

Metrolinx

Greg Johnston – Community Relations Advisor, Durham Region

Justin Klimkait – Community Relations Advisor, Durham Region

Number of participants: 47

PRE-EVENT SAFETY REVIEW

Low Risk: Inside the library, high visibility of various visitors to the library

OVERVIEW:

We had a diverse group of attendees with a high percentage of visitors being seniors. The discussions were mostly focused on fares and the Bowmanville Rail Extension. Visitors were mostly positive about Metrolinx asking about fares and Presto card usage. Being inside the library we were able to have several in depth conversations with patrons who asked various questions about the projects.

SET UP:

- Set up at a table in the foyer of the library
- Built cardboard trains for kids (19)
- Handed out Metrolinx project postcards to provide customers with information on the various projects in their region, highlighted online fares

KEY QUESTIONS

- When will the Bowmanville Extension be completed?
- Where will the Oshawa stations be located?
- Will the new stations include parking?

NEXT STEP:

- Planned future events in Oshawa

LEARNINGS:

- People wanted information on how to buy e-tickets
- People were curious where the location of the Bowmanville extension stations would be located.

- Customers curious about E-ticket promotion

Moving the Needle:

Community: It is important for Metrolinx to hold a presence in the community and be seen as a good neighbour. To do this we align our community engagement efforts with events that are important to the communities we work within. Joining with the Oshawa Public Library we were able to capture a broad spectrum of regular and irregular riders. In addition we were able to engage with a high percentage families/kids. With 47 engagements we were able to address issues, highlight Durham Region transit projects, and assist customers with Presto/fare issues. This engagement is also a positive step for our engagement with elected officials as Councillor Tito-Dante Mariempietri is on the Oshawa Public Library Board.

Transforming the Region: Outlining the benefits of transit investment in various projects within the community. Using this opportunity to highlight the positive impacts of increase transit usage to the growing communities we serve. These conversations help to increase community support and assist in building a positive brand image. Discussions around rail expansion and the Bowmanville extension to meet the needs of a region that is growing and expanding. Focusing our discussions on future service and how Metrolinx plans to meet the needs of the community. Building a positive relationship and increasing awareness of project development by adding transit riders to our e-newsletter to keep them informed.

tone

9 (Positive Overall, good feedback from participants and good discussion about all Transit projects in Durham.)