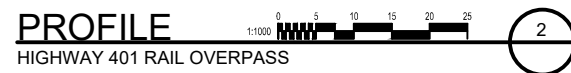
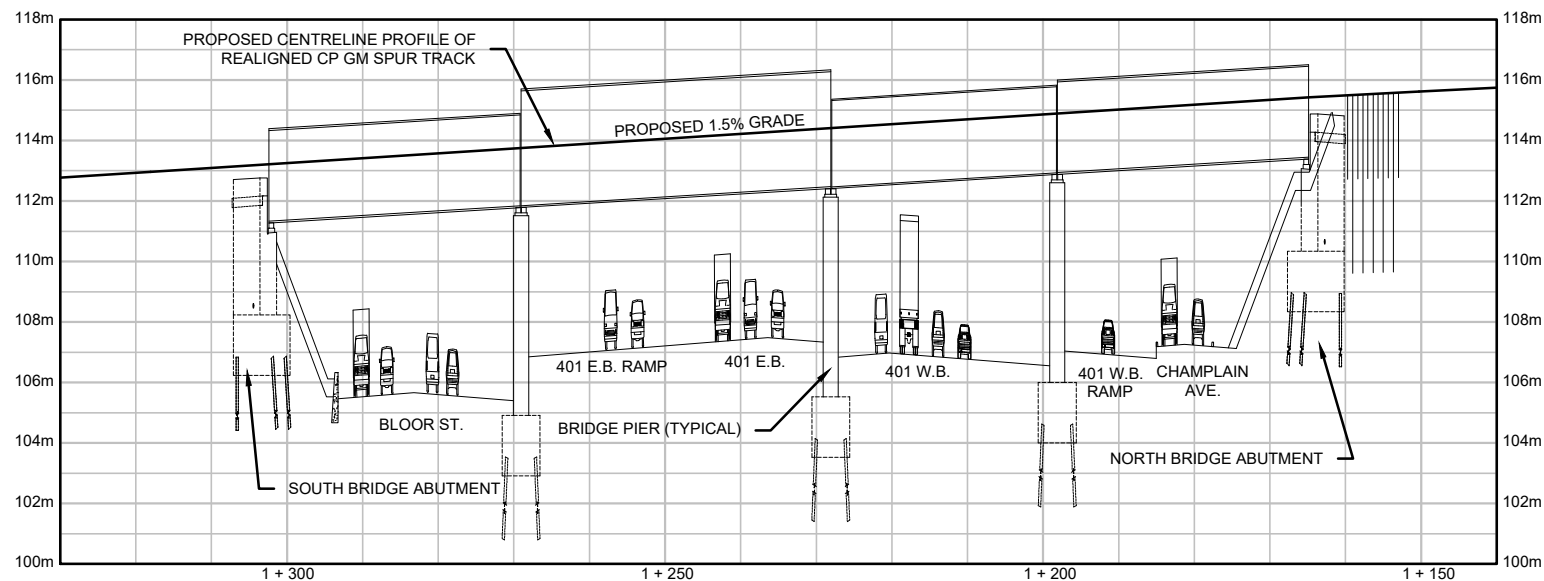
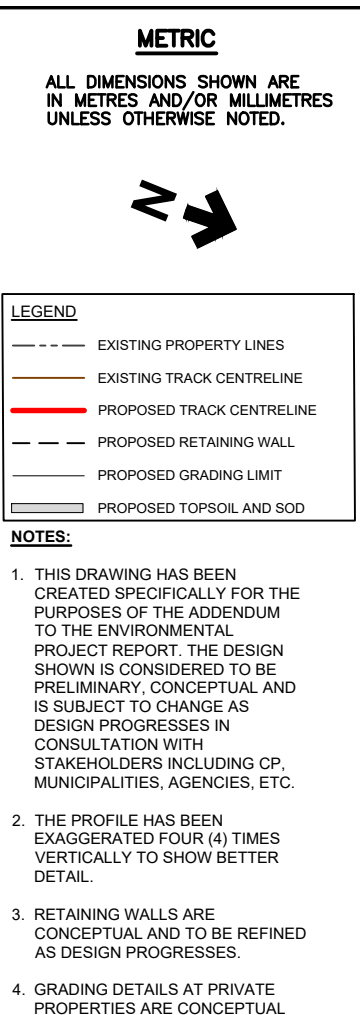




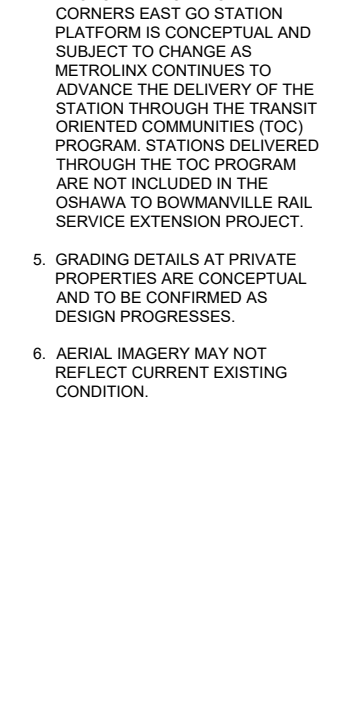
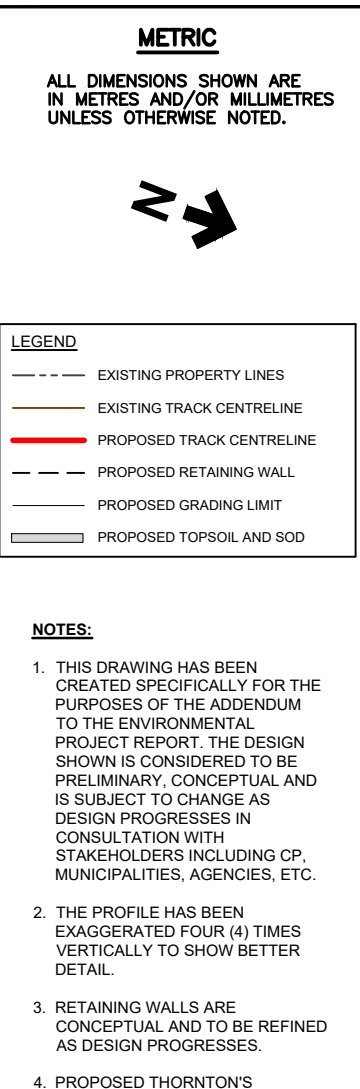
Appendix C

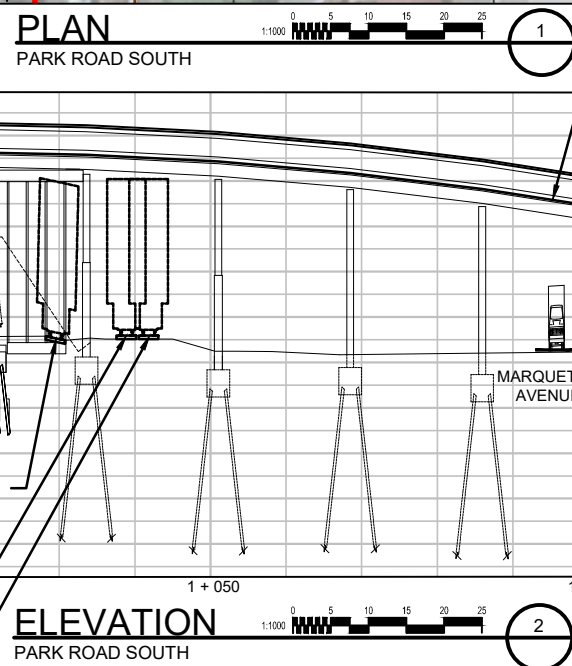
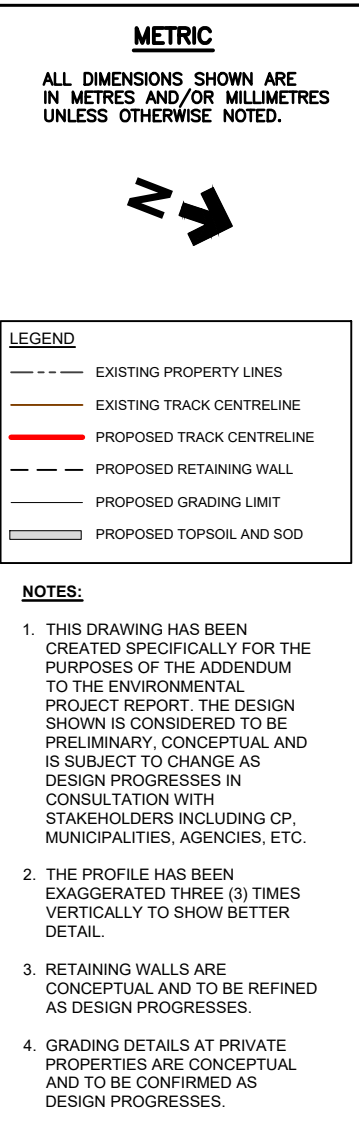
Conceptual Level Design Drawings





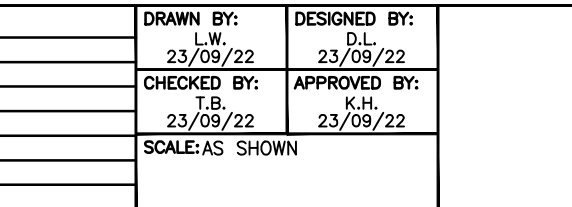
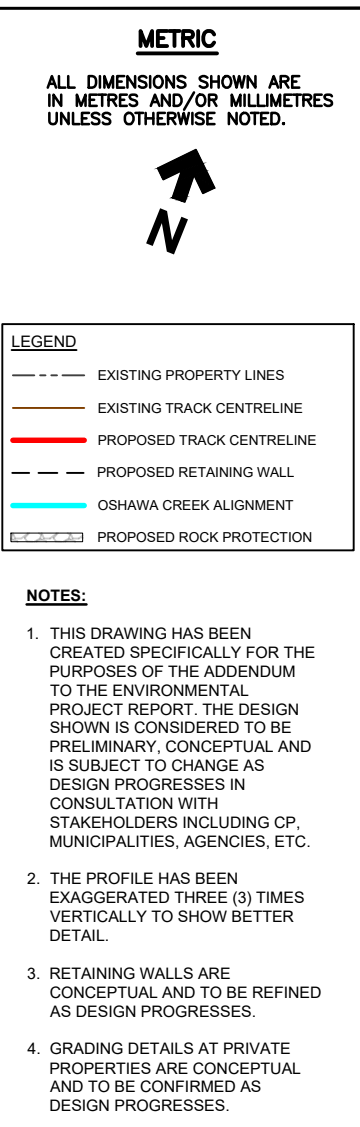



REFERENCE DRAWINGS		ISSUE		REVISIONS		DRAWN BY: D.L. 23/09/22	DESIGNED BY: K.L. 23/09/22		BOWMANVILLE RAIL EXTENSION HIGHWAY 401 RAIL OVERPASS PROPOSED PLAN AND PROFILE				
						CHECKED BY: T.B. 23/09/22 <th>APPROVED BY: K.H. 23/09/22</th>	APPROVED BY: K.H. 23/09/22						
						SCALE: AS SHOWN		NOT FOR CONSTRUCTION					
DWG NO.	TITLE	NO.	DATE	ISSUED FOR	REV.	DATE							
		0	23/09/22	ISSUED FOR EPR ADDENDUM						CONTRACT NO.	DWG. NO. EPRA-PP-01	REV. 0	SHEET 01

[illegible]



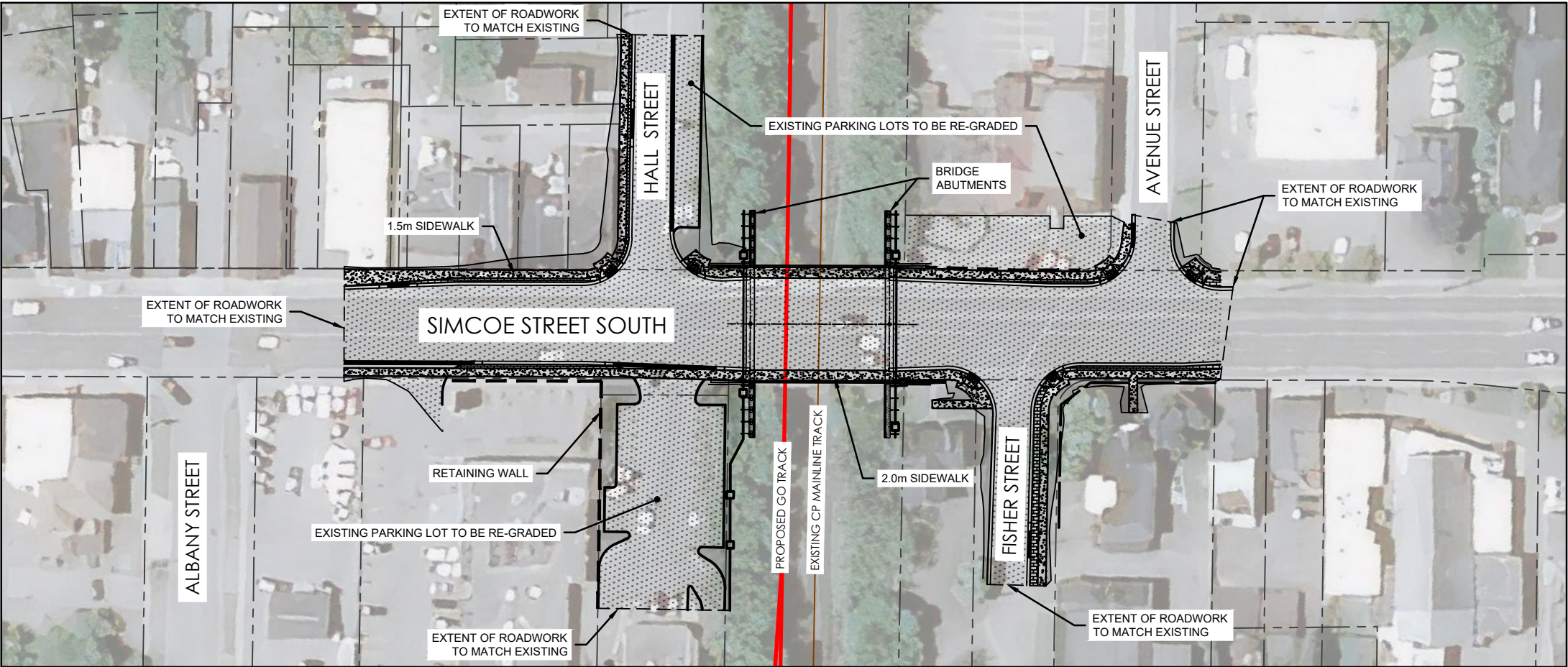
REFERENCE DRAWINGS		ISSUE		REVISIONS		DRAWN BY: L.W. 23/09/22	DESIGNED BY: D.L. 23/09/22		BOWMANVILLE RAIL EXTENSION PARK ROAD SOUTH ROAD OVERPASS PROPOSED PLAN AND ELEVATION				
						CHECKED BY: T.B. 23/09/22	APPROVED BY: K.H. 23/09/22						
						SCALE: AS SHOWN		NOT FOR CONSTRUCTION	 <small>2024 © Canadian Day Pipe Trust Metrolinx, City of Toronto, and the University of Toronto www.cdnpipe.com</small>	CONTRACT NO. DWG. NO. EPRA-PP-03 REV. 0 SHEET 03			
DWG NO.	TITLE	0	23/09/22	ISSUED FOR EPR ADDENDUM									
		NO.	DATE	ISSUED FOR	REV.	DATE							



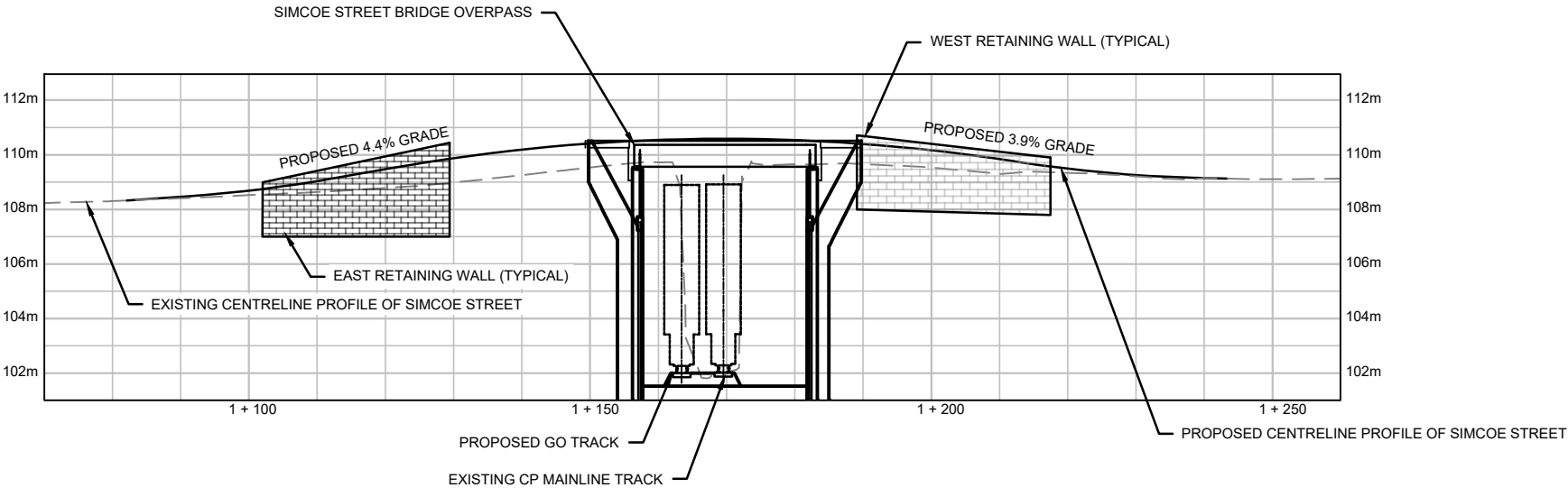
REFERENCE DRAWINGS		ISSUE		REVISIONS		DRAWN BY: L.W. 23/09/22		DESIGNED BY: D.L. 23/09/22		<div></div>	<div></div>	<div> METROLINX</div>		BOWMANVILLE RAIL EXTENSION OSHAWA CREEK RAIL OVERPASS PROPOSED PLAN AND PROFILE					

METRIC

ALL DIMENSIONS SHOWN ARE
IN METRES AND/OR MILLIMETRES
UNLESS OTHERWISE NOTED.



PLAN
SIMCOE STREET SOUTH



PROFILE
SIMCOE STREET SOUTH

LEGEND	
	PROPOSED CONCRETE SIDEWALK
	PROPOSED ASPHALT ROADWAY
	PROPOSED TOPSOIL AND SOD
	PROPOSED DROPPED CURB
	PROPOSED RETAINING WALL IN PROFILE
	PROPOSED RETAINING WALL IN PLAN
	PROPOSED GRADING LIMIT
	EXISTING PROPERTY LINES
	EXISTING TRACK CENTERLINE
	PROPOSED TRACK CENTERLINE

- NOTES:**
1. THIS DRAWING HAS BEEN CREATED SPECIFICALLY FOR THE PURPOSES OF THE ADDENDUM TO THE ENVIRONMENTAL PROJECT REPORT. THE DESIGN SHOWN IS CONSIDERED TO BE PRELIMINARY, CONCEPTUAL AND IS SUBJECT TO CHANGE AS DESIGN PROGRESSES IN CONSULTATION WITH STAKEHOLDERS INCLUDING CP, MUNICIPALITIES, AGENCIES, ETC.
 2. THE PROFILE HAS BEEN EXAGGERATED FOUR (4) TIMES VERTICALLY TO SHOW BETTER DETAIL.
 3. RETAINING WALLS ARE CONCEPTUAL AND TO BE REFINED AS DESIGN PROGRESSES.
 4. GRADING DETAILS AT PRIVATE PROPERTIES ARE CONCEPTUAL AND TO BE CONFIRMED AS DESIGN PROGRESSES.
 5. AERIAL IMAGERY MAY NOT REFLECT CURRENT EXISTING CONDITION.

REFERENCE DRAWINGS		ISSUE		REVISIONS		DRAWN BY:	DESIGNED BY:	NOT FOR CONSTRUCTION				BOWMANVILLE RAIL EXTENSION SIMCOE STREET SOUTH ROAD OVERPASS PROPOSED PLAN AND PROFILE			
						D.L.	D.L.								
						23/09/22	23/09/22								
						CHECKED BY:	APPROVED BY:								
						T.B.	K.H.	SCALE: AS SHOWN				CONTRACT NO.			
						23/09/22	23/09/22								
DWG NO.	TITLE	NO.	DATE	ISSUED FOR	REV.	DATE							DWG. NO.	REV.	SHEET
		0	23/09/22	ISSUED FOR EPR ADDENDUM									EPRA-PP-05	0	05

METRIC

ALL DIMENSIONS SHOWN ARE
IN METRES AND/OR MILLIMETRES
UNLESS OTHERWISE NOTED.

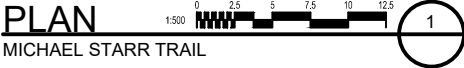
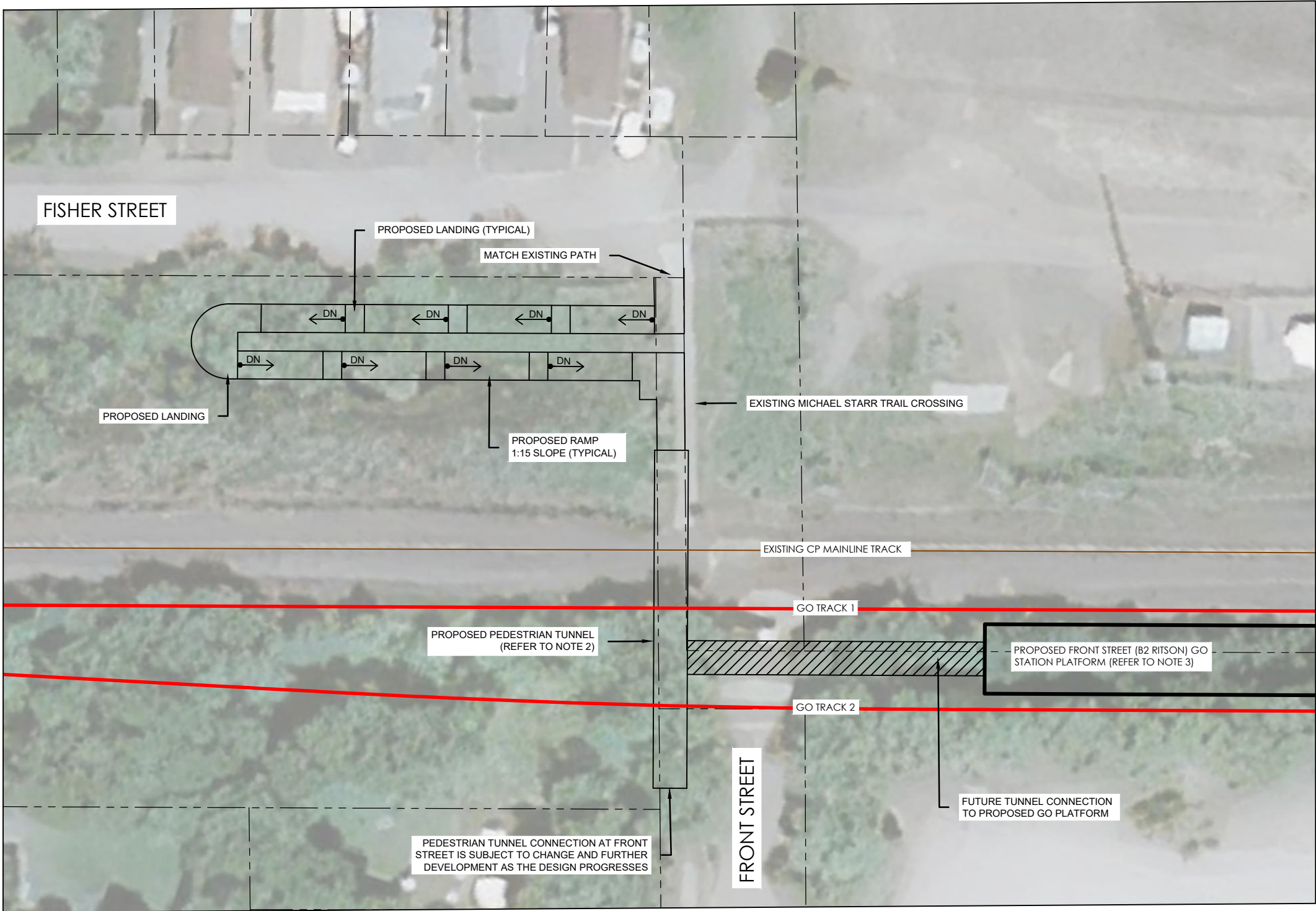




LEGEND

- EXISTING PROPERTY LINES
- EXISTING TRACK CENTERLINE
- PROPOSED TRACK CENTERLINE
- FUTURE TRACK CENTERLINE
- ▨ FUTURE TUNNEL

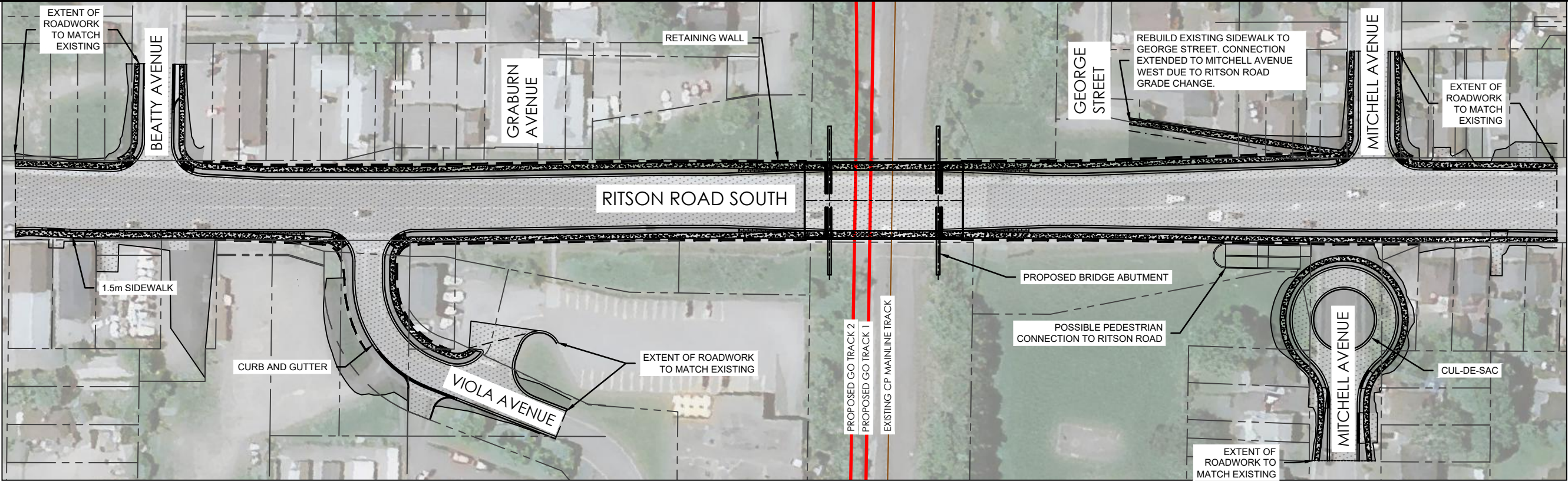
NOTES:

- THIS DRAWING HAS BEEN CREATED SPECIFICALLY FOR THE PURPOSES OF THE ADDENDUM TO THE ENVIRONMENTAL PROJECT REPORT. THE DESIGN SHOWN IS CONSIDERED TO BE PRELIMINARY, CONCEPTUAL AND IS SUBJECT TO CHANGE AS DESIGN PROGRESSES IN CONSULTATION WITH STAKEHOLDERS INCLUDING CP, MUNICIPALITIES, AGENCIES, ETC.
- PEDESTRIAN TUNNEL AND RAMPS ARE CONCEPTUAL AND TO BE REFINED AS DESIGN PROGRESSES.
- PROPOSED RITSON GO STATION PLATFORM IS CONCEPTUAL AND SUBJECT TO CHANGE AS METROLINX CONTINUES TO ADVANCE THE DELIVERY OF THE STATION THROUGH THE TRANSIT ORIENTED COMMUNITIES (TOC) PROGRAM. STATIONS DELIVERED THROUGH THE TOC PROGRAM ARE NOT INCLUDED IN THE OSHAWA TO BOWMANVILLE RAIL SERVICE EXPANSION PROJECT.
- AERIAL IMAGERY MAY NOT REFLECT CURRENT EXISTING CONDITION.

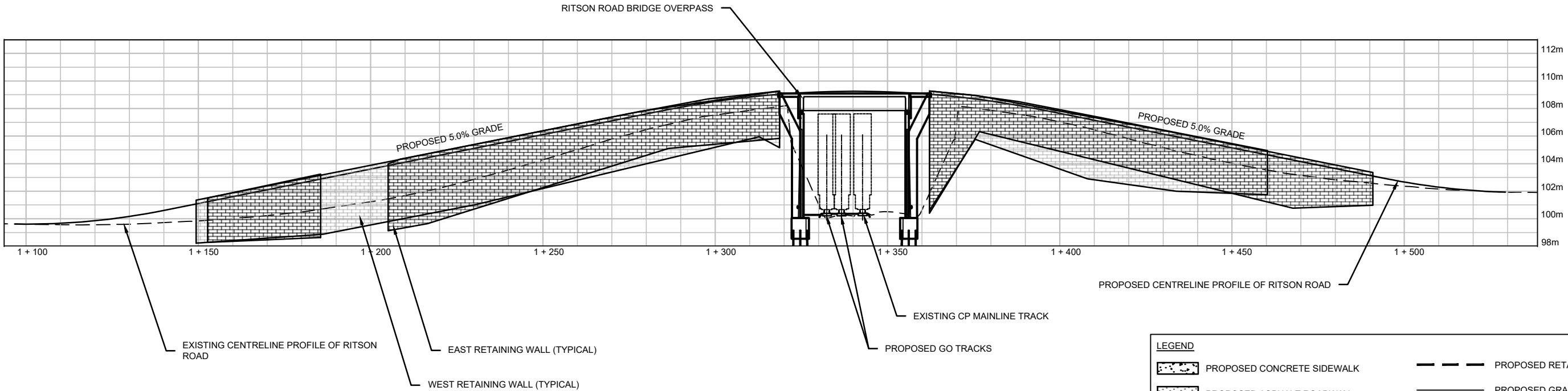


REFERENCE DRAWINGS		ISSUE		REVISIONS		DRAWN BY: D.L. 23/09/22	DESIGNED BY: D.L. 23/09/22	NOT FOR CONSTRUCTION	 	BOWMANVILLE RAIL EXTENSION MICHAEL STARR TRAIL PEDESTRIAN TUNNEL PROPOSED PLAN									
						CHECKED BY: T.B. 23/09/22	APPROVED BY: K.H. 23/09/22			CONTRACT NO.	DWG. NO. EPRA-PP-06	REV. 0	SHEET 06						
						SCALE: AS SHOWN													
DWG NO.	TITLE	NO.	DATE	ISSUED FOR	REV.	DATE													
		0	23/09/22	ISSUED FOR EPR ADDENDUM															

V:\01850\active\185011019 - Bowmanville\03_Detailed_Design\10_drawings\10_3_model_files\civil\working\2023-02-10_PIC-Board-Drawings\CAD\CP6_SQ13756_10_Michael_Starr.dwg



PLAN
RITSON ROAD SOUTH



PROFILE
RITSON ROAD SOUTH

LEGEND	
	PROPOSED CONCRETE SIDEWALK
	PROPOSED ASPHALT ROADWAY
	PROPOSED TOPSOIL AND SOD
	PROPOSED DROPPED CURB
	PROPOSED RETAINING WALL IN PROFILE
	PROPOSED RETAINING WALL IN PLAN
	PROPOSED GRADING LIMIT
	EXISTING PROPERTY LINES
	EXISTING TRACK CENTERLINE
	PROPOSED TRACK CENTERLINE

METRIC

ALL DIMENSIONS SHOWN ARE
IN METRES AND/OR MILLIMETRES
UNLESS OTHERWISE NOTED.



NOTES:

1. THIS DRAWING HAS BEEN CREATED SPECIFICALLY FOR THE PURPOSES OF THE ADDENDUM TO THE ENVIRONMENTAL PROJECT REPORT. THE DESIGN SHOWN IS CONSIDERED TO BE PRELIMINARY, CONCEPTUAL AND IS SUBJECT TO CHANGE AS DESIGN PROGRESSES IN CONSULTATION WITH STAKEHOLDERS INCLUDING CP, MUNICIPALITIES, AGENCIES, ETC.
2. THE PROFILE HAS BEEN EXAGGERATED FOUR (4) TIMES VERTICALLY TO SHOW BETTER DETAIL.
3. RETAINING WALLS ARE CONCEPTUAL AND TO BE REFINED AS DESIGN PROGRESSES.
4. GRADING DETAILS AT PRIVATE PROPERTIES ARE CONCEPTUAL AND TO BE CONFIRMED AS DESIGN PROGRESSES.
5. AERIAL IMAGERY MAY NOT REFLECT CURRENT EXISTING CONDITION.

V:\01850\active\185011019 - Bowmanville\03_Detailed_Design\10_drawings\10_3_model_files\civil\working\2023-02-10_PIC-Board-Drawings\CAD\CPG_SQL3756_11_C3000_4_pp.dwg

REFERENCE DRAWINGS		ISSUE		REVISIONS	
DWG NO.	TITLE	NO.	DATE	ISSUED FOR	REV. DATE
		0	23/09/22	ISSUED FOR EPR ADDENDUM	

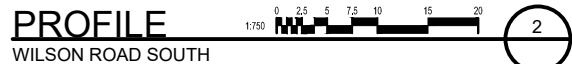
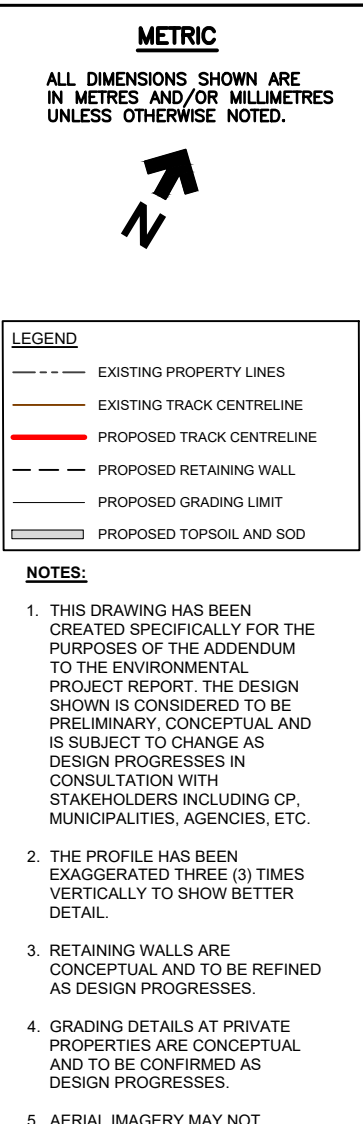
DRAWN BY: D.L. 23/09/22	DESIGNED BY: D.L. 23/09/22
CHECKED BY: T.B. 23/09/22	APPROVED BY: K.H. 23/09/22
SCALE: AS SHOWN	



NOT FOR CONSTRUCTION

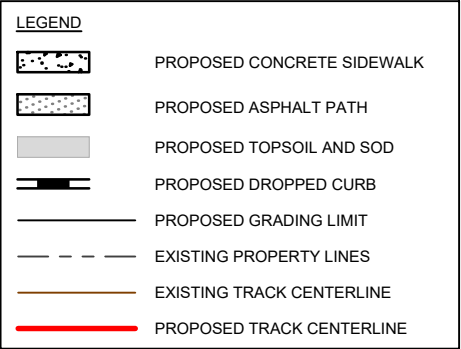
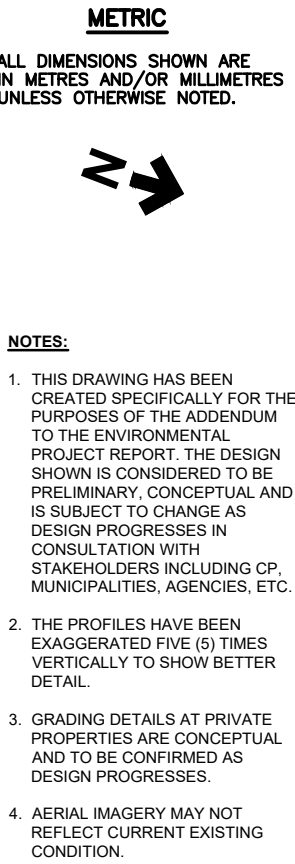
METROLINX



Stantec

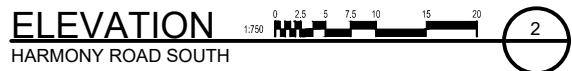
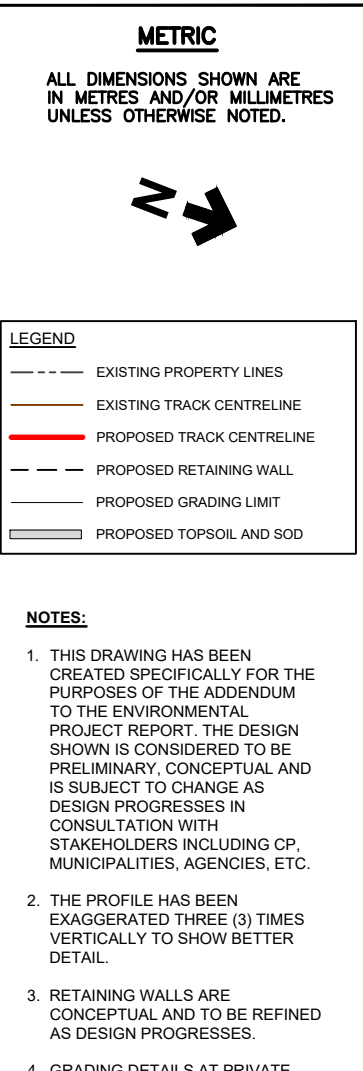
BOWMANVILLE RAIL EXTENSION RITSON ROAD SOUTH ROAD OVERPASS PROPOSED PLAN AND PROFILE			
CONTRACT NO.	DWG. NO. EPRA-PP-07	REV. 0	SHEET 07





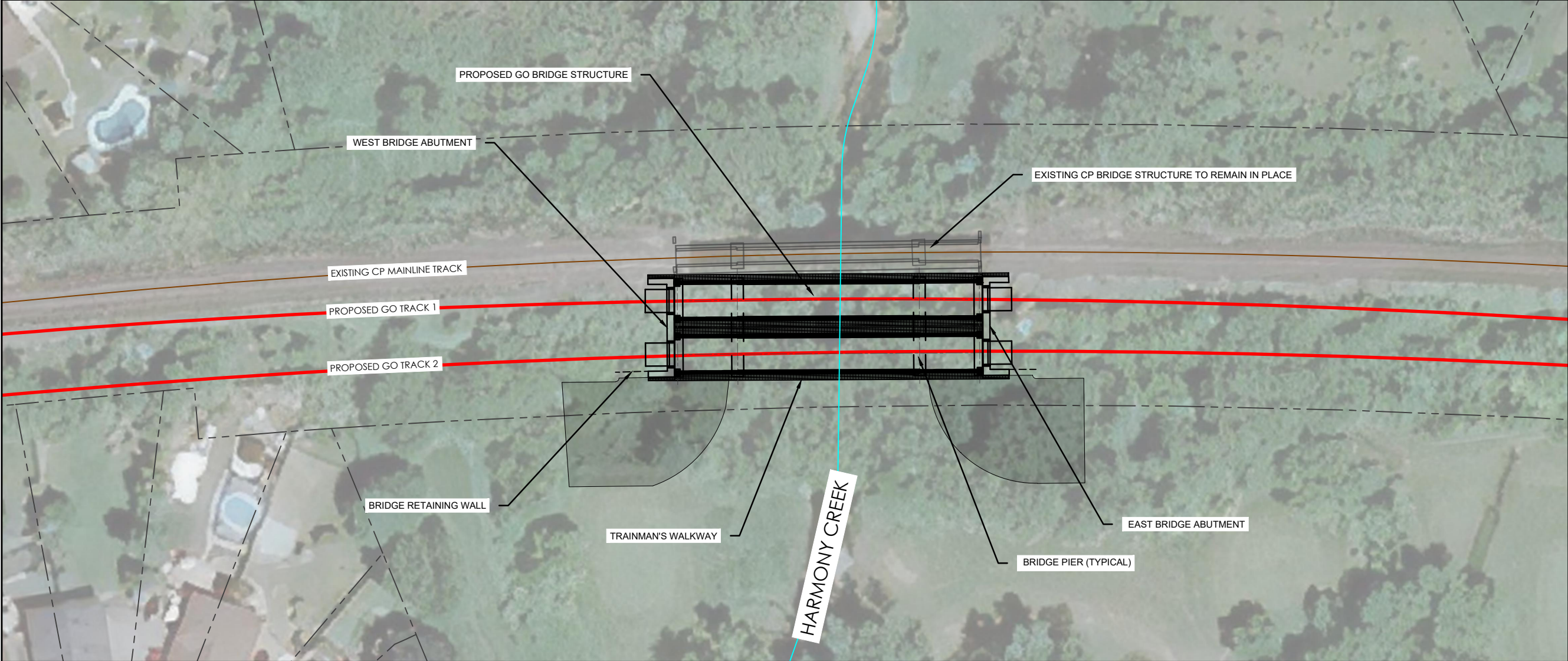
REFERENCE DRAWINGS		ISSUE		REVISIONS		DRAWN BY: L.W. 23/09/22	DESIGNED BY: D.L. 23/09/22	 	BOWMANVILLE RAIL EXTENSION WILSON ROAD SOUTH RAIL OVERPASS PROPOSED PLAN AND PROFILE			
						CHECKED BY: T.B. 23/09/22	APPROVED BY: K.H. 23/09/22					
		0	23/09/22	ISSUED FOR EPR ADDENDUM		SCALE: AS SHOWN			NOT FOR CONSTRUCTION			
DWG NO.	TITLE	NO.	DATE	ISSUED FOR							REV.	DATE



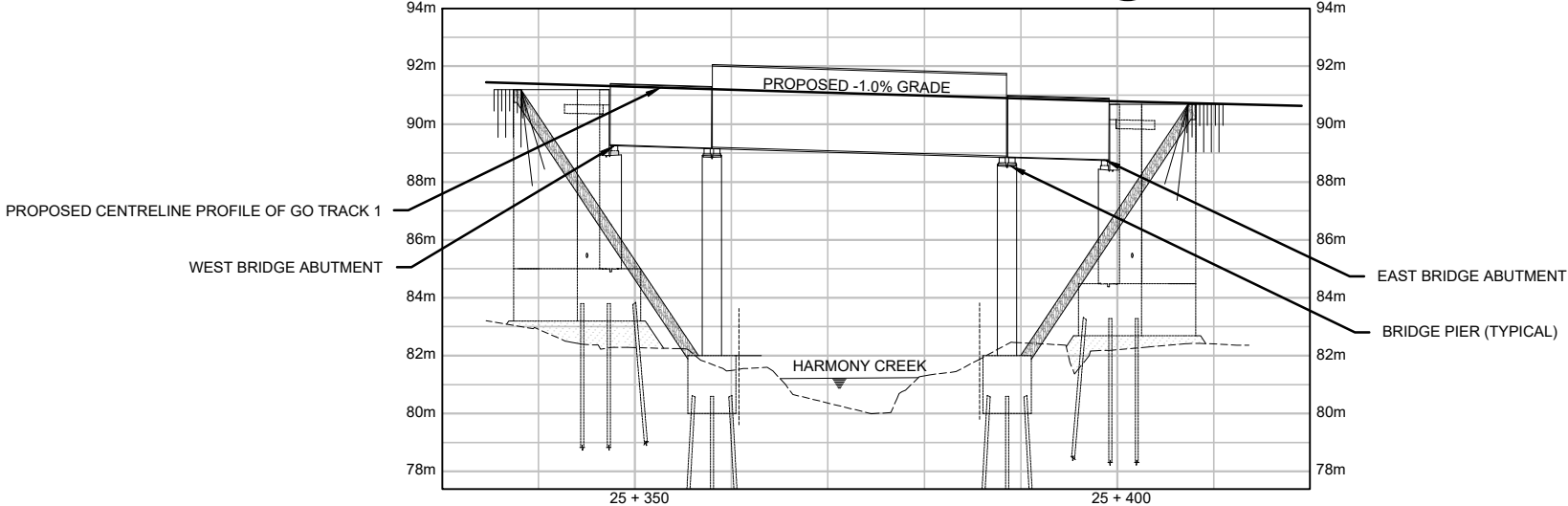
REFERENCE DRAWINGS		ISSUE		REVISIONS		DRAWN BY: D.L. 23/09/22	DESIGNED BY: D.L. 23/09/22	<div></div>	<div></div>	<div>METROLINX</div>	<div>BOWMANVILLE RAIL EXTENSION FAREWELL STREET MULTI-USE BRIDGE OVERPASS PROPOSED PLAN AND PROFILE</div>			
						CHECKED BY: T.B. 23/09/22	APPROVED BY: K.H. 23/09/22							
		0	23/09/22	ISSUED FOR EPR ADDENDUM		SCALE:AS SHOWN		NOT FOR CONSTRUCTION	<div>Stantec</div> <div><small>2500 Elgin Mills Road West, Suite 100 Markham, ON, Canada L3R 0E8 www.stantec.com</small></div> <div><small>The Contractor will, with parties responsible for all drawings, NOT accept the drawing, nor any or portions of it, as required to clearly, without delay, the construction, in any form, as presented and not for construction, for the use, for the use, as presented and not for construction, for the use, for the use, as presented and not for construction, for the use, for the use, as presented and not for construction, for the use, for the use, as presented and not for construction, for the use, for the use, as presented and not for construction, for the use, for the use, as presented and not for construction, for the use, for the use, as presented and not for construction, for the use, for the use, as presented and not for construction, for the use, for the use, as presented and not for construction, for the use, for the use, as presented and not for construction, for the use, for the use, as presented and not for construction, for the use, for the use, as presented and not for construction, for the use, for the use, as presented and not for construction, for the use, for the use, as presented and not for construction, for the use, for the use, as presented and not for construction, for the use, for the use, as presented and not for construction, for the use, for the use, as presented and not for construction, for the use, for the use, as presented and not for construction, for the use, for the use, as presented and not for construction, for the use, for the use, as presented and not for construction, for the use, for the use, as presented and not for construction, for the use, for the use, as presented and not for construction, for the use, for the use, as presented and not for construction, for the use, for the use, as presented and not for construction, for the use, for the use, as presented and not for construction, for the use, for the use, as presented and not for construction, for the use, for the use, as presented and not for construction, for the use, for the use, as presented and not for construction, for the use, for the use, as presented and not for construction, for the use, for the use, as presented and not for construction, for the use, for the use, as presented and not for construction, for the use, for the use, as presented and not for construction, for the use, for the use, as presented and not for construction, for the use, for the use, as presented and not for construction, for the use, for the use, as presented and not for construction, for the use, for the use, as presented and not for construction, for the use, for the use, as presented and not for construction, for the use, for the use, as presented and not for construction, for the use, for the use, as presented and not for construction, for the use, for the use, as presented and not for construction, for the use, for the use, as presented and not for construction, for the use, for the use, as presented and not for construction, for the use, for the use, as presented and not for construction, for the use, for the use, as presented and not for construction, for the use, for the use, as presented and not for construction, for the use, for the use, as presented and not for construction, for the use, for the use, as presented and not for construction, for the use, for the use, as presented and not for construction, for the use, for the use, as presented and not for construction, for the use, for the use, as presented and not for construction, for the use, for the use, as presented and not for construction, for the use, for the use, as presented and not for construction, for the use, for the use, as presented and not for construction, for the use, for the use, as presented and not for construction, for the use, for the use, as presented and not for construction, for the use, for the use, as presented and not for construction, for the use, for the use, as presented and not for construction, for the use, for the use, as presented and not for construction, for the use, for the use, as presented and not for construction, for the use, for the use, as presented and not for construction, for the use, for the use, as presented and not for construction, for the use, for the use, as presented and not for construction, for the use, for the use, as presented and not for construction, for the use, for the use, as presented and not for construction, for the use, for the use, as presented and not for construction, for the use, for the use, as presented and not for construction, for the use, for the use, as presented and not for construction, for the use, for the use, as presented and not for construction, for the use, for the use, as presented and not for construction, for the use, for the use, as presented and not for construction, for the use, for the use, as presented and not for construction, for the use, for the use, as presented and not for construction, for the use, for the use, as presented and not for construction, for the use, for the use, as presented and not for construction, for the use, for the use, as presented and not for construction, for the use, for the use, as presented and not for construction, for the use, for the use, as presented and not for construction, for the use, for the use, as presented and not for construction, for the use, for the use, as presented and not for construction, for the use, for the use, as presented and not for construction, for the use, for the use, as presented and not for construction, for the use, for the use, as presented and not for construction, for the use, for the use, as presented and not for construction, for the use, for the use, as presented and not for construction, for the use, for the use, as presented and not for construction, for the use, for the use, as presented and not for construction, for the use, for the use, as presented and not for construction, for the use, for the use, as presented and not for construction, for the use, for the use, as presented and not for construction, for the use, for the use, as presented and not for construction, for the use, for the use, as presented and not for construction, for the use, for the use, as presented and not for construction, for the use, for the use, as presented and not for construction, for the use, for the use, as presented and not for construction, for the use, for the use, as presented and not for construction, for the use, for the use, as presented and not for construction, for the use, for the use, as presented and not for construction, for the use, for the use, as presented and not for construction, for the use, for the use, as presented and not for construction, for the use, for the use, as presented and not for construction, for the use, for the use, as presented and not for construction, for the use, for the use, as presented and not for construction, for the use, for the use, as presented and not for construction, for the use, for the use, as presented and not for construction, for the use, for the use, as presented and not for construction, for the use, for the use, as presented and not for construction, for the use, for the use, as presented and not for construction, for the use, for the use, as presented and not for construction, for the use, for the use, as presented and not for construction, for the use, for the use, as presented and not for construction, for the use, for the use, as presented and not for construction, for the use, for the use, as presented and not for construction, for the use, for the use, as presented and not for construction, for the use, for the use, as presented and not for construction, for the use, for the use, as presented and not for construction, for the use, for the use, as presented and not for construction, for the use, for the use, as presented and not for construction, for the use, for the use, as presented and not for construction, for the use, for the use, as presented and not for construction, for the use, for the use, as presented and not for construction, for the use, for the use, as presented and not for construction, for the use, for the use, as presented and not for construction, for the use, for the use, as presented and not for construction, for the use, for the use, as presented and not for construction, for the use, for the use, as presented and not for construction, for the use, for the use, as presented and not for construction, for the use, for the use, as presented and not for construction, for the use, for the use, as presented and not for construction, for the use, for the use, as presented and not for construction, for the use, for the use, as presented and not for construction, for the use, for the use, as presented and not for construction, for the use, for the use, as presented and not for construction, for the use, for the use, as presented and not for construction, for the use, for the use, as presented and not for construction, for the use, for the use, as presented and not for construction, for the use, for the use, as presented and not for construction, for the use, for the use, as presented and not for construction, for the use, for the use, as presented and not for construction, for the use, for the use, as presented and not for construction, for the use, for the use, as presented and not for construction, for the use, for the use, as presented and not for construction, for the use, for the use, as presented and not for construction, for the use, for the use, as presented and not for construction, for the use, for the use, as presented and not for construction, for the use, for the use, as presented and not for construction, for the use, for the use, as presented and not for construction, for the use, for the use, as presented and not for construction, for the use, for the use, as presented and not for construction, for the use, for the use, as presented and not for construction, for the use, for the use, as presented and not for construction, for the use, for the use, as presented and not for construction, for the use, for the use, as presented and not for construction, for the use, for the use, as presented and not for construction, for the use, for the use, as presented and not for construction, for the use, for the use, as presented and not for construction, for the use, for the use, as presented and not for construction, for the use, for the use, as presented and not for construction, for the use, for the use, as presented and not for construction, for the use, for the use, as presented and not for construction, for the use, for the use, as presented and not for construction, for the use, for the use, as presented and not for construction, for the use, for the use, as presented and not for construction, for the use, for the use, as presented and not for construction, for the use, for the use, as presented and not for construction, for the use, for the use, as presented and not for construction, for the use, for the use, as presented and not for construction, for the use, for the use, as presented and not for construction, for the use, for the use, as presented and not for construction, for the use, for the use, as presented and not for construction, for the use, for the use, as presented and not for construction, for the use, for the use, as presented and not for construction, for the use, for the use, as presented and not for construction, for the use, for the use, as presented and not for construction, for the use, for the use, as presented and not for construction, for the use, for the use, as presented and not for construction, for the use, for the use, as presented and not for construction, for the use, for the use, as presented and not for construction, for the use, for the use, as presented and not for construction, for the use, for the use, as presented and not for construction, for the use, for the use, as presented and not for construction, for the use, for the use, as presented and not for construction, for the use, for the use, as presented and not for construction, for the use, for the use, as presented and not for construction, for the use, for the use, as presented and not for construction, for the use, for the use, as presented and not for construction, for the use, for the use, as presented and not for construction, for the use, for the use, as presented and not for construction, for the use, for the use, as presented and not for construction, for the use, for the use, as presented and not for construction, for the use, for the use, as presented and not for construction, for the use, for the use, as presented and not for construction, for the use, for the use, as presented and not for construction, for the use, for the use, as presented and not for construction, for the use, for the use, as presented and not for construction, for the use, for the use, as presented and not for construction, for the use, for the use, as presented and not for construction, for the use, for the use, as presented and not for construction, for the use, for the use, as presented and not for construction, for the use, for the use, as presented and not for construction, for the use, for the use, as presented and not for construction, for the use, for the use, as presented and not for construction, for the use, for the use, as presented and not for construction, for the use, for the use, as presented and not for construction, for the use, for the use, as presented and not for construction, for the use, for the use, as presented and not for construction, for the use, for the use, as presented and not for construction, for the use, for the use, as presented and not for construction, for the use, for the use, as presented and not for construction, for the use, for the use, as presented and not for construction, for the use, for the use, as presented and not for construction, for the use, for the use, as presented and not for construction, for the use, for the use, as presented and not for construction, for the use, for the use, as presented and not for construction, for the use, for the use, as presented and not for construction, for the use, for the use, as presented and not for construction, for the use, for the use, as presented and not for construction, for the use, for the use, as presented and not for construction, for the use, for the use, as presented and not for construction, for the use, for the use, as presented and not for construction, for the use, for the use, as presented and not for construction, for the use, for the use, as presented and not for construction, for the use, for the use, as presented and not for construction, for the use, for the use, as presented and not for construction, for the use, for the use, as presented and not for construction, for the use, for the use, as presented and not for construction, for the use, for the use, as presented and not for construction, for the use, for the use, as presented and not for construction, for the use, for the use, as presented and not for construction, for the use, for the use, as presented and not for construction, for the use, for the use, as presented and not for construction, for the use, for the use, as presented and not for construction, for the use, for the use, as presented and not for construction, for the use, for the use, as presented and not for construction, for the use, for the use, as presented and not for construction, for the use, for the use, as presented and not for construction, for the use, for the use, as presented and not for construction, for the use, for the use, as presented and not for construction, for the use, for the use, as presented and not for construction, for the use, for the use, as presented and not for construction, for the use, for the use, as presented and not for construction, for the use, for the use, as presented and not for construction, for the use, for the use, as presented and not for construction, for the use, for the use, as presented and not for construction, for the use, for the use, as presented and not for construction, for the use, for the use, as presented and not for construction, for the use, for the use, as presented and not for construction, for the use, for the use, as presented and not for</small></div>					



REFERENCE DRAWINGS		ISSUE		REVISIONS		DRAWN BY: L.W. 23/09/22	DESIGNED BY: D.L. 23/09/22				BOWMANVILLE RAIL EXTENSION HARMONY ROAD SOUTH ROAD OVERPASS PROPOSED PLAN AND ELEVATION
										 <small>STANTEC CONSULTING GROUP INC. UNIVERSITY OF CALIFORNIA, LOS ANGELES www.stantec.com</small>	



PLAN
HARMONY CREEK



PROFILE
HARMONY CREEK

METRIC

ALL DIMENSIONS SHOWN ARE
IN METRES AND/OR MILLIMETRES
UNLESS OTHERWISE NOTED.





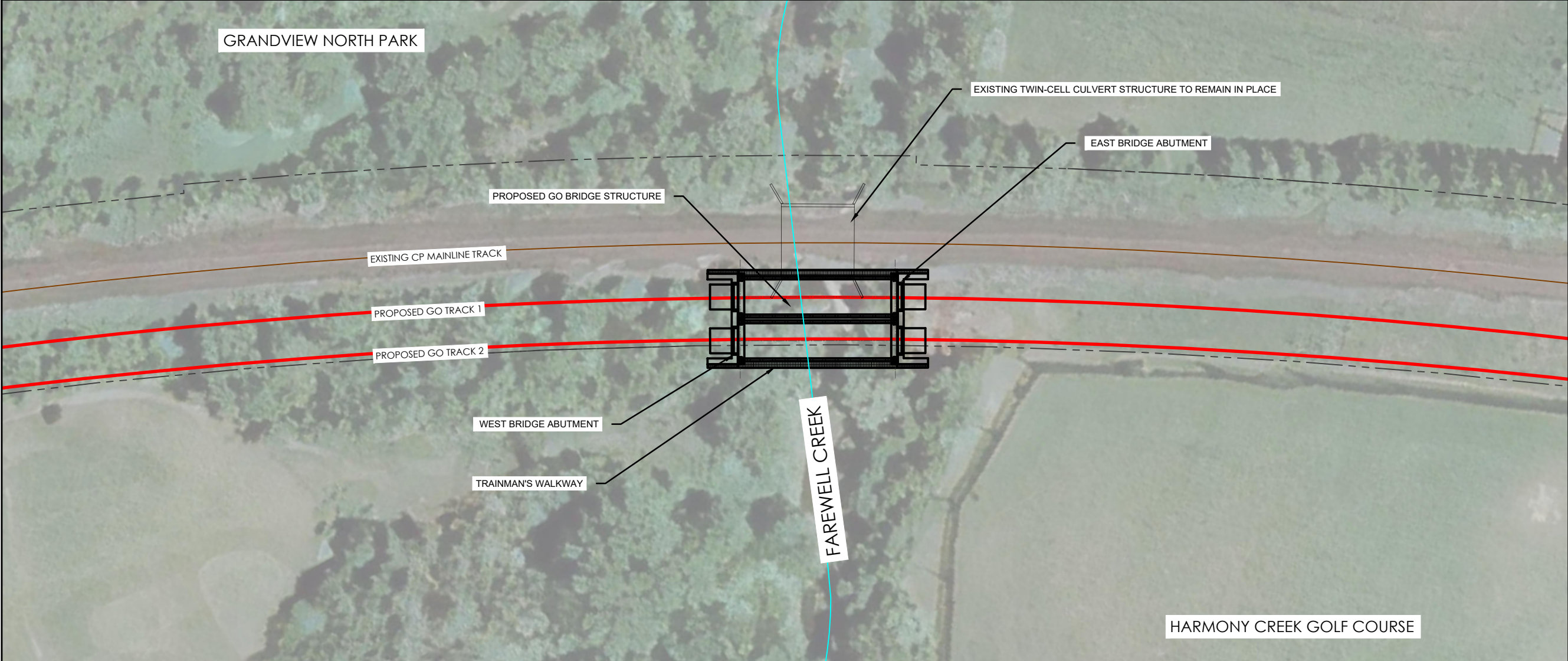
LEGEND

- EXISTING PROPERTY LINES
- EXISTING TRACK CENTRELINE
- PROPOSED TRACK CENTRELINE
- HARMONY CREEK ALIGNMENT
- PROPOSED RETAINING WALL
- PROPOSED GRADING LIMIT
- PROPOSED TOPSOIL AND SOD
- PROPOSED ROCK PROTECTION

NOTES:

- THIS DRAWING HAS BEEN CREATED SPECIFICALLY FOR THE PURPOSES OF THE ADDENDUM TO THE ENVIRONMENTAL PROJECT REPORT. THE DESIGN SHOWN IS CONSIDERED TO BE PRELIMINARY, CONCEPTUAL AND IS SUBJECT TO CHANGE AS DESIGN PROGRESSES IN CONSULTATION WITH STAKEHOLDERS INCLUDING CP, MUNICIPALITIES, AGENCIES, ETC.
- THE PROFILE HAS BEEN EXAGGERATED THREE (3) TIMES VERTICALLY TO SHOW BETTER DETAIL.
- RETAINING WALLS ARE CONCEPTUAL AND TO BE REFINED AS DESIGN PROGRESSES.
- GRADING DETAILS AT PRIVATE PROPERTIES ARE CONCEPTUAL AND TO BE CONFIRMED AS DESIGN PROGRESSES.
- AERIAL IMAGERY MAY NOT REFLECT CURRENT EXISTING CONDITION.

REFERENCE DRAWINGS		ISSUE		REVISIONS		DRAWN BY: L.W. 23/09/22	DESIGNED BY: D.L. 23/09/22	NOT FOR CONSTRUCTION		BOWMANVILLE RAIL EXTENSION HARMONY CREEK RAIL OVERPASS PROPOSED PLAN AND PROFILE					
						CHECKED BY: T.B. 23/09/22	APPROVED BY: K.H. 23/09/22								
						SCALE: AS SHOWN									
DWG NO.	TITLE	NO.	DATE	ISSUED FOR	REV.	DATE			 <small>Stantec 300475 Commerce Drive West Tower Hamilton, ON, Canada L8E 0H8 www.stantec.com</small>		CONTRACT NO.	DWG. NO.	REV.	SHEET	
		0	23/09/22	ISSUED FOR EPR ADDENDUM								EPRA-PP-11	0	11	



METRIC

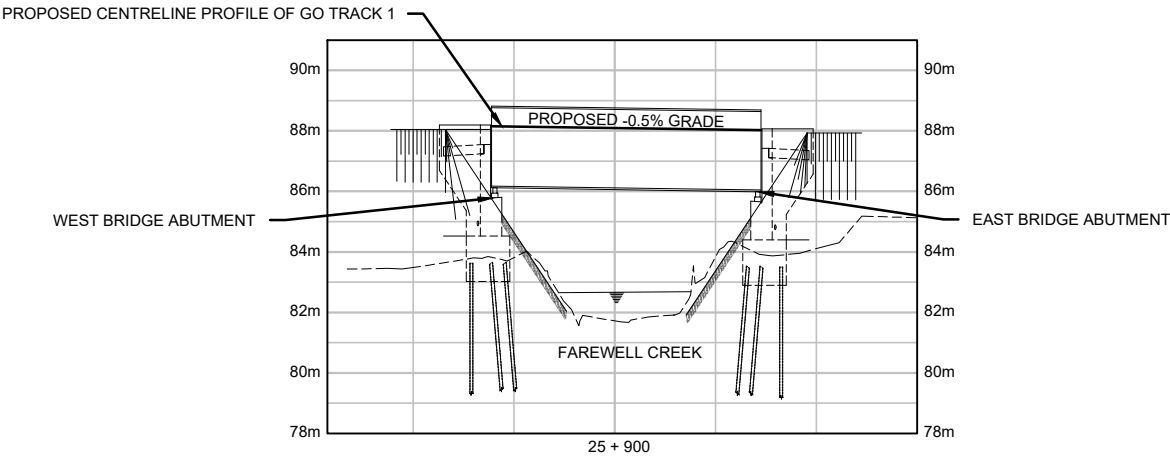
ALL DIMENSIONS SHOWN ARE IN METRES AND/OR MILLIMETRES UNLESS OTHERWISE NOTED.

LEGEND



- EXISTING PROPERTY LINES
- EXISTING TRACK CENTRELINE
- PROPOSED TRACK CENTRELINE
- FAREWELL CREEK ALIGNMENT
- PROPOSED ROCK PROTECTION

- NOTES:**
1. THIS DRAWING HAS BEEN CREATED SPECIFICALLY FOR THE PURPOSES OF THE ADDENDUM TO THE ENVIRONMENTAL PROJECT REPORT. THE DESIGN SHOWN IS CONSIDERED TO BE PRELIMINARY, CONCEPTUAL AND IS SUBJECT TO CHANGE AS DESIGN PROGRESSES IN CONSULTATION WITH STAKEHOLDERS INCLUDING CP, MUNICIPALITIES, AGENCIES, ETC.
 2. THE PROFILE HAS BEEN EXAGGERATED THREE (3) TIMES VERTICALLY TO SHOW BETTER DETAIL.
 3. RETAINING WALLS ARE CONCEPTUAL AND TO BE REFINED AS DESIGN PROGRESSES.
 4. GRADING DETAILS AT PRIVATE PROPERTIES ARE CONCEPTUAL AND TO BE CONFIRMED AS DESIGN PROGRESSES.
 5. AERIAL IMAGERY MAY NOT REFLECT CURRENT EXISTING CONDITION.

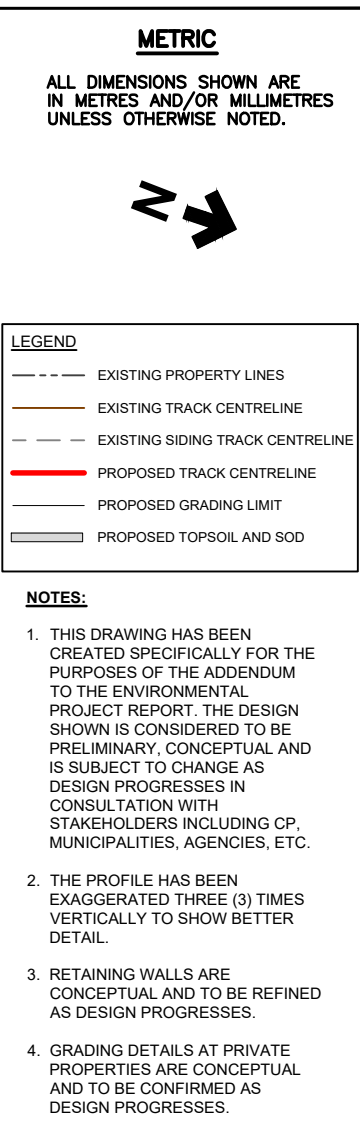
PLAN
FAREWELL CREEK

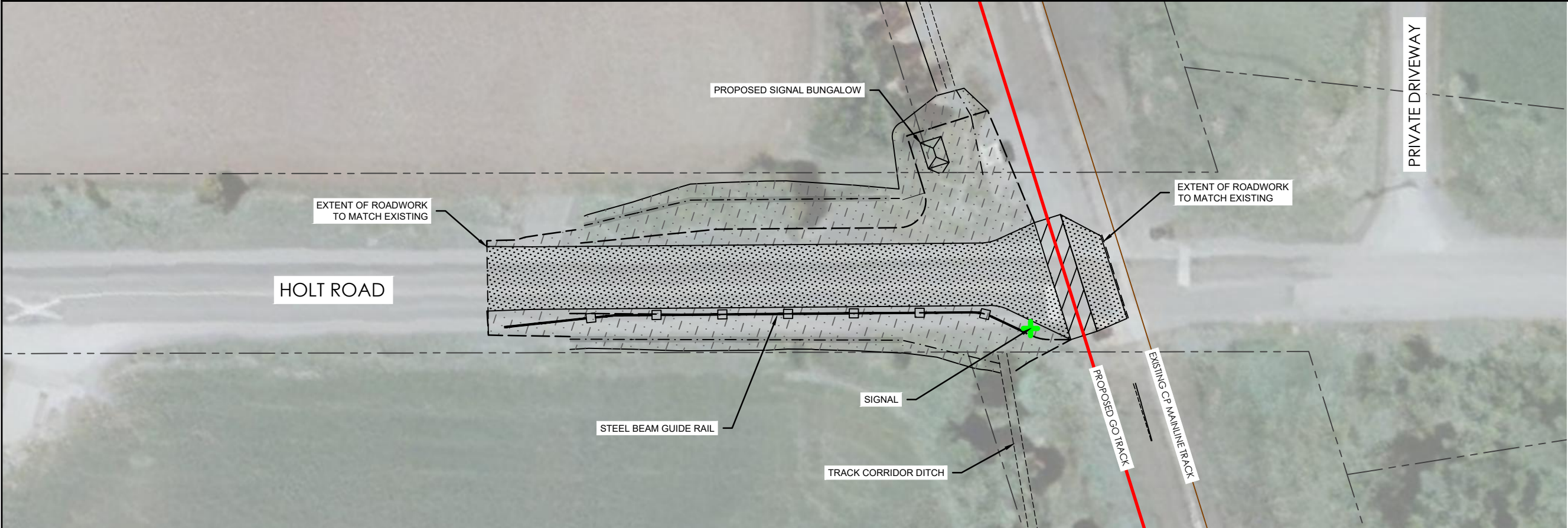


PROFILE
FAREWELL CREEK

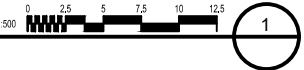
REFERENCE DRAWINGS		ISSUE		REVISIONS		DRAWN BY:	DESIGNED BY:	NOT FOR CONSTRUCTION	 	BOWMANVILLE RAIL EXTENSION FAREWELL CREEK RAIL OVERPASS PROPOSED PLAN AND PROFILE			
						L.W. 23/09/22	D.L. 23/09/22			CONTRACT NO.	DWG. NO. EPRA-PP-12	REV. 0	SHEET 12
						CHECKED BY:	APPROVED BY:						
						T.B. 23/09/22	K.H. 23/09/22						
						SCALE: AS SHOWN							
DWG NO.	TITLE	NO.	DATE	ISSUED FOR	REV.	DATE							
		0	23/09/22	ISSUED FOR EPR ADDENDUM									
				ISSUED FOR									

V:\01850\active\185011019 - Bowmanville\03_Detailed_Design\10_drawings\10_3_model_files\civil\working\2023-02-10_PIC-Board-Drawings\CAD\CPG_SQL3756_bridges-EPR.dwg

[illegible]



PLAN
HOLT ROAD



V:\01850\active\185011019 - Bowmanville\03_Detailed_Design\10_drawings\10.3_model_files\civil\working\2023-02-10_PIC-Board-Drawings\CAD\CPG_SQL3756_25_Holt.dwg

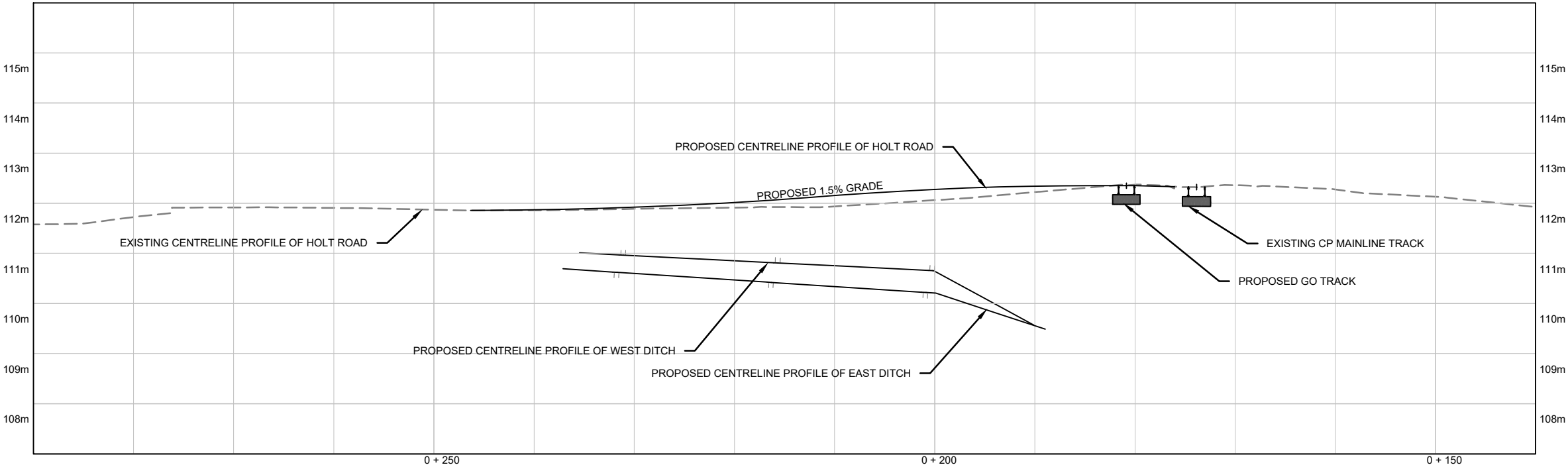
METRIC

ALL DIMENSIONS SHOWN ARE
IN METRES AND/OR MILLIMETRES
UNLESS OTHERWISE NOTED.

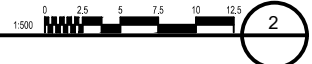


NOTES:



1. THIS DRAWING HAS BEEN CREATED SPECIFICALLY FOR THE PURPOSES OF THE ADDENDUM TO THE ENVIRONMENTAL PROJECT REPORT. THE DESIGN SHOWN IS CONSIDERED TO BE PRELIMINARY, CONCEPTUAL AND IS SUBJECT TO CHANGE AS DESIGN PROGRESSES IN CONSULTATION WITH STAKEHOLDERS INCLUDING CP, MUNICIPALITIES, AGENCIES, ETC.
2. THE PROFILE HAS BEEN EXAGGERATED FIVE (5) TIMES VERTICALLY TO SHOW BETTER DETAIL.
3. GRADING DETAILS AT PRIVATE PROPERTIES ARE CONCEPTUAL AND TO BE CONFIRMED AS DESIGN PROGRESSES.
4. AERIAL IMAGERY MAY NOT REFLECT CURRENT EXISTING CONDITION.

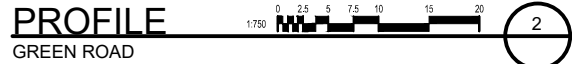
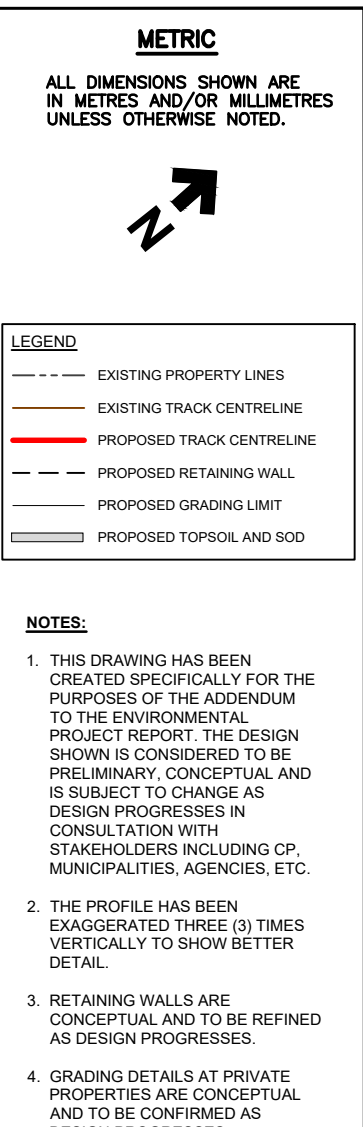




PROFILE
HOLT ROAD



LEGEND	
	PROPOSED ASPHALT ROADWAY
	PROPOSED GRAVEL OR SEEDING
	TRACK CROSSING SURFACE
	PROPOSED ROADWAY DITCH
	PROPOSED TRACK CORRIDOR DITCH
	PROPOSED GRADING LIMIT
	EXISTING PROPERTY LINES
	EXISTING TRACK CENTERLINE
	PROPOSED TRACK CENTERLINE

REFERENCE DRAWINGS		ISSUE		REVISIONS		DRAWN BY: D.L. 23/09/22	DESIGNED BY: D.L. 23/09/22		BOWMANVILLE RAIL EXTENSION HOLT ROAD AT-GRADE CROSSING PROPOSED PLAN AND PROFILE			
						CHECKED BY: T.B. 23/09/22 <th>APPROVED BY: K.H. 23/09/22</th>	APPROVED BY: K.H. 23/09/22					
		0	23/09/22	ISSUED FOR EPR ADDENDUM				 <small>Stantec 300475 Commerce Drive West Tower Hamilton, ON, Canada L8E 0H8 www.stantec.com</small>	CONTRACT NO. DWG. NO. REV. SHEET EPRA-PP-14 0 14			
DWG NO.	TITLE	NO.	DATE	ISSUED FOR		REV.	DATE					



REFERENCE DRAWINGS		ISSUE		REVISIONS		DRAWN BY: L.W. 23/09/22		DESIGNED BY: D.L. 23/09/22		 METROLINX	BOWMANVILLE RAIL EXTENSION GREEN ROAD RAIL OVERPASS PROPOSED PLAN AND PROFILE			
						CHECKED BY: T.B. 23/09/22	APPROVED BY: K.H. 23/09/22							
						SCALE: AS SHOWN				NOT FOR CONSTRUCTION	 Stantec <small>Stantec is a registered service mark of Stantec Inc. All other marks are the property of their respective owners. No part of this drawing may be reproduced without written permission from Stantec Inc. or its affiliates. All rights reserved.</small>			
DWG. NO.	TITLE	0	23/09/22	ISSUED FOR EPR ADDENDUM										
		NO.	DATE	ISSUED FOR		REV.	DATE			CONTRACT NO.	DWG. NO. EPRA-PP-15	REV. 0	SHEET 15	