

Queen/Spadina Construction Liaison Committee

October 3, 2023



Agenda

Welcome (5 minutes)

- Introductions
- Land Acknowledgement
- Housekeeping & Introductions

Presentation (25 minutes)

- Signage & Construction Updates

Feedback and Discussion (30 minutes)



LAND ACKNOWLEDGEMENT

Let us take a moment to acknowledge we are on lands that have been, and continue to be, home to many Indigenous Peoples including the Anishnabeg, the Haudenosaunee and the Huron-Wendat peoples.

We are all Treaty people. Many of us have come here as settlers, as immigrants or involuntarily as part of the trans-Atlantic slave trade, in this generation, or generations past.

We acknowledge the historic and continued impacts of colonization and the need to work towards meaningful reconciliation with the original caretakers of this land.

We acknowledge that Metrolinx operates on territories and lands covered by many treaties that affirm and value the rights of Indigenous communities, Nations and Peoples.

We understand the importance of working towards reconciliation with the original caretakers of this land. At Metrolinx, we will conduct business in a manner that is built on a foundation of trust, respect and collaboration.

SCHOOL ZONE SAFETY

Here are some safety tips from Toronto Public Health:

- Follow the school zones safety traffic rules.
- When possible, park legally on a side street or in school designated areas and walk your child to school to avoid adding to the traffic in front of or near the school.
- Stop at crosswalks and intersections. Allow children and other pedestrians to fully cross the road before continuing on.
- Enter and exit school zones and driveways slowly and carefully. Watch for children on and near the road, particularly in the morning and after school hours.
- Have your child exit the car on the right side nearest to the sidewalk.
- Do not speed.



Source: Toronto Public Health

PREVIOUS CLC MINUTES AND ACTION ITEMS

ACTION ITEM	STATUS UPDATE
1. Follow-up on approach to safety concerns and sitelines for design and installation of pedestrian tunnels (CPTED)	OTG is reviewing designs prior to installation
2. Update on dates for Bulwer Street weekend closures	Information on anticipated closures included in today's presentation
3. Update on street furniture inventory and storage/handover of BIA assets	Metrolinx has reached out to the BIA to discuss/coordinate transfer of items
4. Line of sight to future work plan	Information included in today's presentation

Queen Spadina Signage

QUEEN SPADINA SIGNAGE

- Temporary signage has been installed on the current fencing
- The existing fencing will be replaced by plywood construction hoarding in the new year, upon completion of demolition activities
- Once installed, OTG will install signage that provides project information and wayfinding
- Metrolinx is planning to work with the community to gather and feedback into what the community would like to see on the hoarding
- More details, along with a better sense of timing for these discussions, will be shared with the community as things progress



Metrolinx temporary project signage installed along Queen Street West.

Construction Update

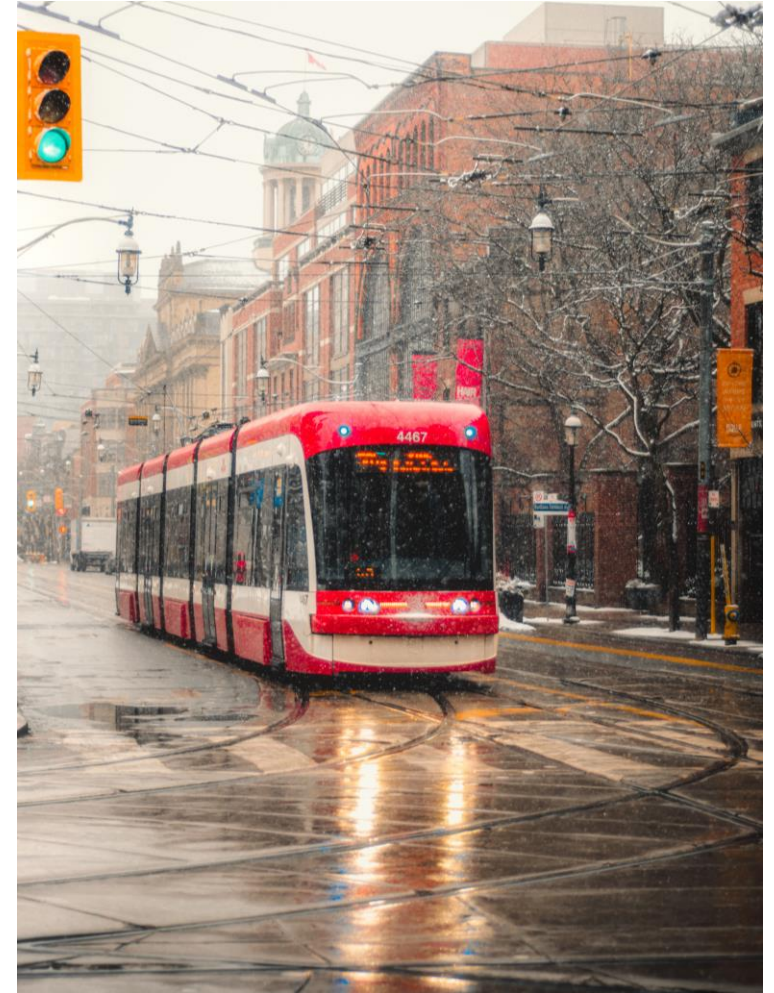
WHAT IS CURRENTLY HAPPENING

- **OTG is near completion of the interior demolition,** abatement works and demolition preparation works at the North and South buildings.
- **Geotechnical investigations** at Spadina Ave. and Graffiti Alley have been completed.
- **Installation of instrumentation and monitoring devices** to control ground movements during the excavation of the station is underway.



WHAT IS CURRENTLY HAPPENING

- **Protections for the public and adjacent structures** during demolitions - such as fences, covered pedestrian walkways - have been installed.
- Temporary lane closures and routing of pedestrian paths in place to accommodate demolition.
- Lane occupancy and scaffolding on Queen will change following the conclusion of interior abatement.



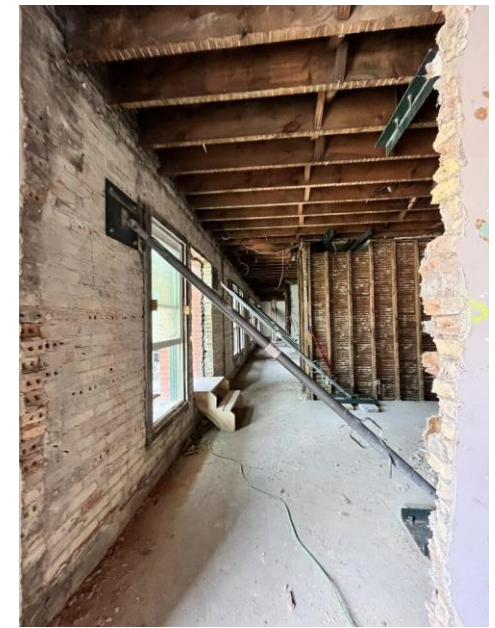
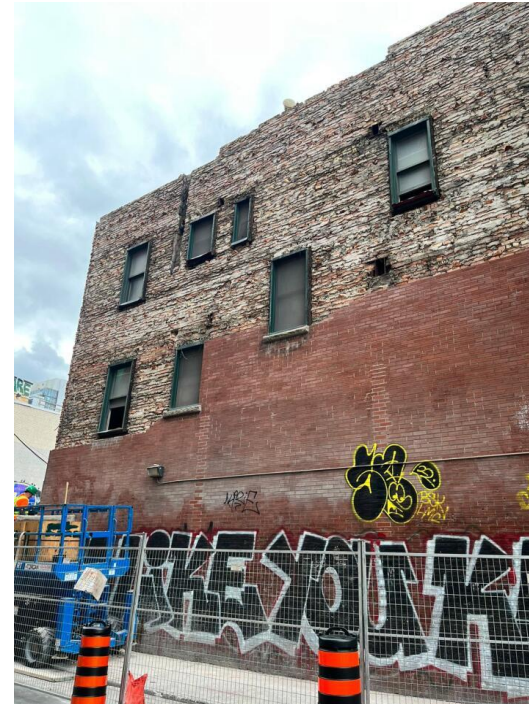
WHAT IS CURRENTLY HAPPENING

Pedestrian tunnel scaffolding installed at the south site



WHAT IS CURRENTLY HAPPENING

Heritage works underway at the North buildings



WHAT IS UPCOMING - SOUTH ENTRANCE

- **Abatement and interior demolition in progress** in all the buildings. Current progress is 90%.
- **Demolition works expected to start mid- October.** Works will be completed by the end of December.
- **Occasional closure of Graffiti Alley in November** for demolition works.
- Lane closure at Queen St W EB will be **open on October 5th.**



WHAT IS UPCOMING - NORTH ENTRANCE

- **18m of the South sidewalk at Bulwer street** will remain closed for approximately two more months to allow for demolition works.
- **Heritage façade retention towers** works expected to start in November and will continue until the end of December.
- **Demolition works expected to start** in late October and to be extended until January 2024.
- **Full closure of Bulwer Street** on consecutive weekends during demolition. Expected dates:

November 4th – November 5th

November 11th – November 12th

November 18th – November 19th

November 25th – November 26th



NOTICE OF DEMOLITION:

443, 449, 451, 453, 455 QUEEN ST W & 378 QUEEN ST W (165 - 177 SPADINA AVE)

Expected duration:

Up to 5 months

Expected start date:

Mid- October

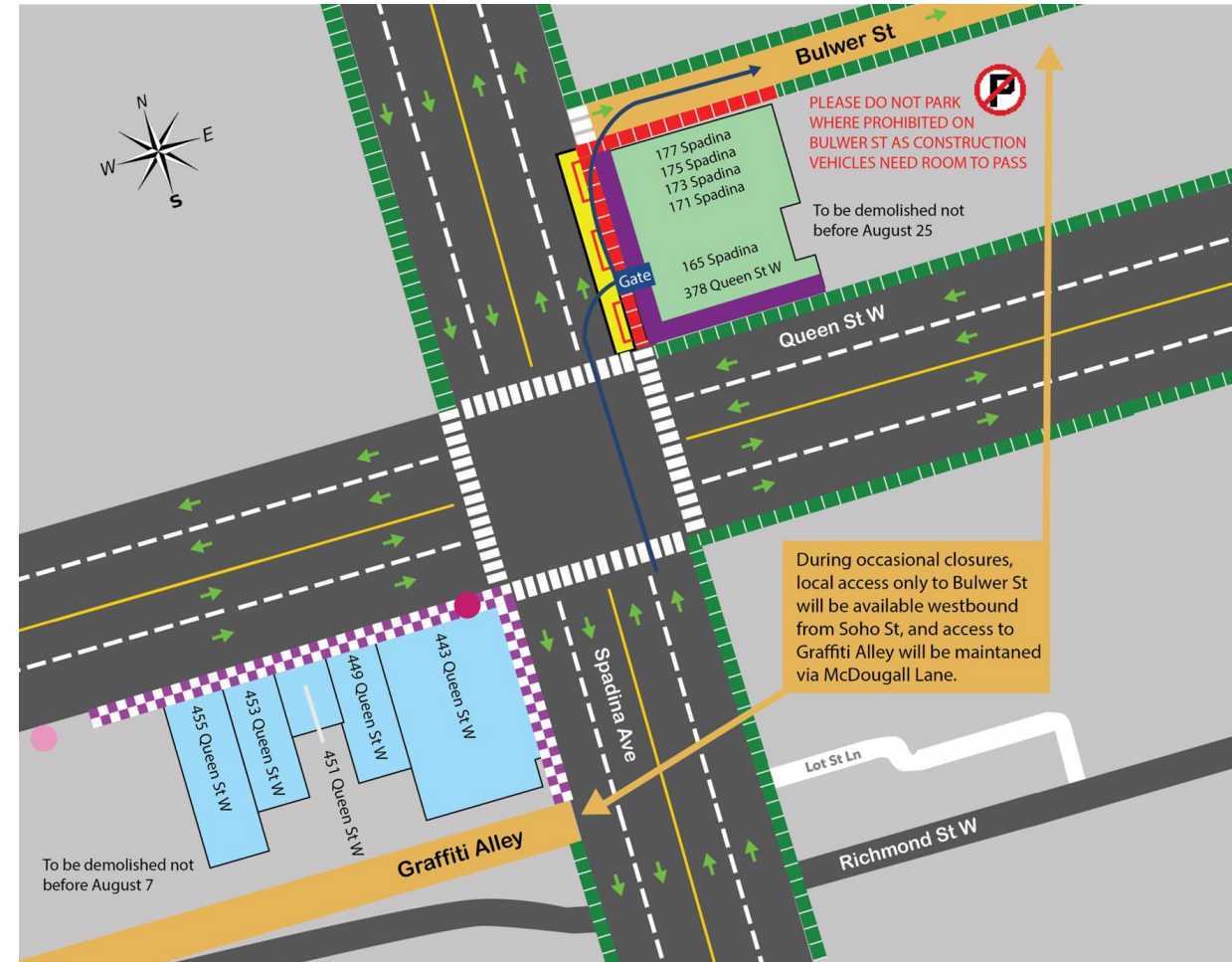
Expected hours of work:

Weekdays and occasional weekends 6am-7am set-up; hours of work 7:00am-6:00pm

What to expect during demolition:

During demolition activities, heavy equipment (excavator, triaxle trucks) will be working within the project property limits

Note: Lane closure at Queen St W EB will be open on October 5th



Expected Timeline of Upcoming work

- **Fall 2023:**
 - **Demolition Works (North, South)**
 - **Heritage works (North)**
- **Early 2024:**
 - **Installation of permanent fencing/hoarding installation**
 - **Support of Excavation (Piles) in South Entrance**
- **Spring-Summer 2024:**
 - **Support of Excavation (Piles) in North Entrance**
 - **Excavation of shafts, shotcrete and rock anchors**

NOISE AND DUST MITIGATION DURING DEMOLITION

Measures in place to limit noise and dust on-site, including:

- **Minimal use of the excavator hammer to limit noise on sites.**
- **Dust mitigation procedure will include spraying water on elements being removed and the excavator attachments to suppress excess amounts of dust.**
- **Daily cleaning of the road pavement and sidewalks for the frontage of the property adjacent to demolition area and laneway access up to 20 meters from the property.**

QUEEN-SPADINA: COMMUNITY OUTREACH

Construction Liaison Committees

- Monthly CLC meetings: virtual, in-person and hybrid options
- Next meetings: November 7, December 5, January 2

Business Community

- Direct business outreach and canvassing
- Monthly meetings with the Queen Street West BIA
- Upcoming BIA meetings with OTG

Community Outreach

- Virtual and in-person open houses
- Pop-ups within the community and in residential building lobbies
- In-person and virtual consultation with residences and businesses

Community Notification

- Physical and digital distribution of construction notices
- Canvassing high impact areas
- News and information provided in the Ontario Line newsletter

WE ARE HERE FOR YOU

Metrolinx will keep the community, residents and businesses informed by providing project updates, seeking input and feedback, and addressing questions and concerns effectively and quickly.

Connect with us:

Bradley Naismith, Community Engagement Advisor Bradley.Naismith@metrolinx.com, 437-326-0785
Mark Clancy, Senior Manager, Community Engagement Mark.Clancy@metrolinx.com, 647-449-2857

Email OntarioLine@metrolinx.com
Telephone 24/7 @ 416-202-5100

Ontario Line e-newsletter @ Metrolinx.com/OntarioLine

Follow us on social media:

@ OntarioLine



DISCUSSION

Artist's rendering – subject to change. Transit-Oriented Community proposals not shown.

