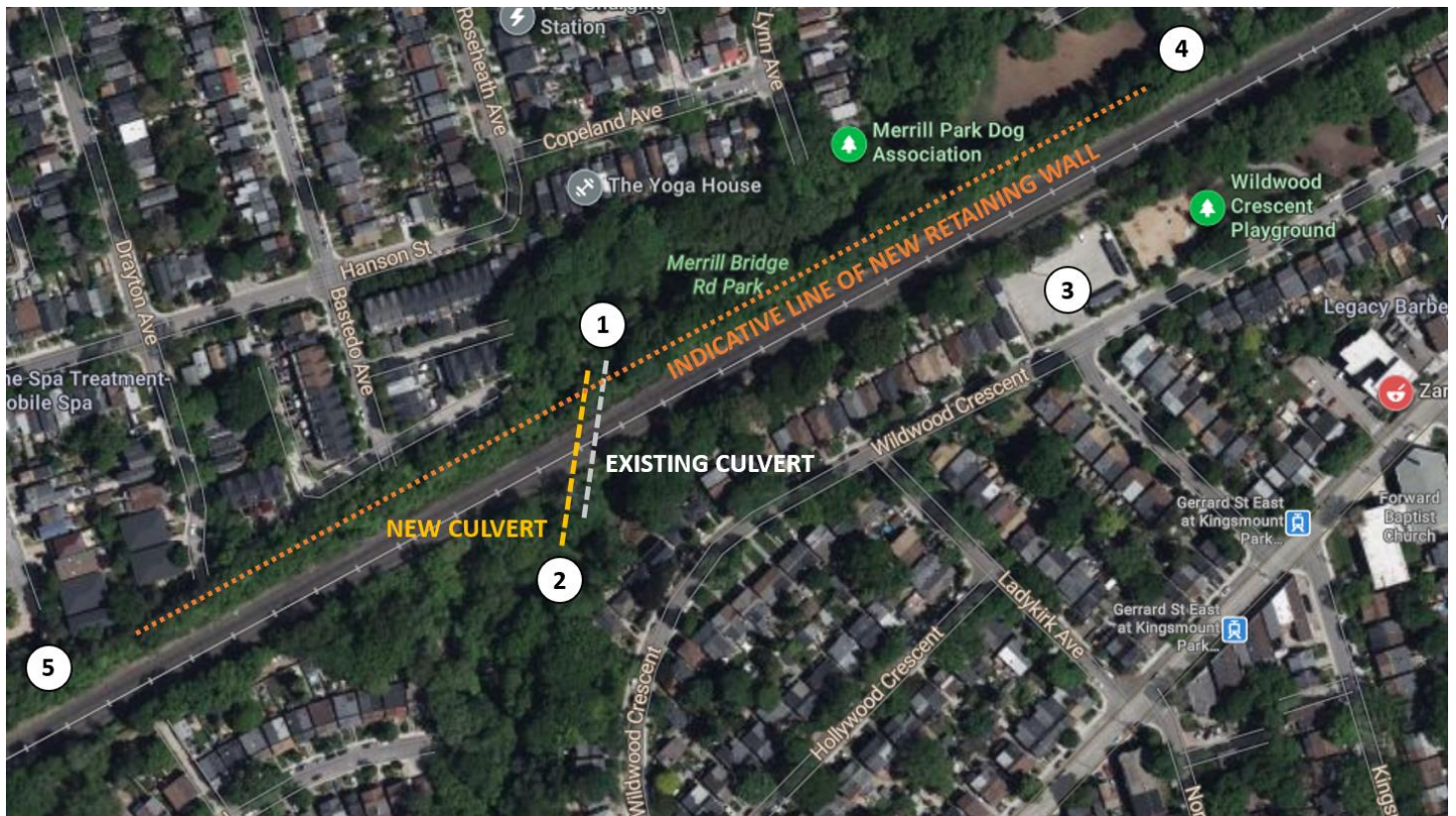


Lakeshore East Rail Corridor: Diversion of Small's Creek and construction of a Retaining Wall

November 2023 to October 2024



Construction Activities	Tentative Start Date	Expected Duration	Hours of Work	Details
Diversion of Small's Creek	Early November	2 weeks	Daytime	We have finished construction of a new culvert beneath the railway line. We now need to create a new riverbed, divert Small's Creek from the existing culvert to the new one and decommission the old tunnel.
Construction of a Retaining Wall	Mid November	12 months	Daytime and Nighttime	We need to install a new track to the north of the existing railway lines to facilitate new train services. To do this, we need to widen the railway corridor by building a retaining wall so that we can build up the ground for the new railway line.

Small's Creek diversion

Small's Creek watercourse currently passes beneath the Lakeshore East rail corridor in a culvert (see plan overleaf). To facilitate new rail services along the corridor, we need to widen the railway corridor and install an additional track. The existing Small's Creek culvert (drainage tunnel) needs to be replaced. Construction crews have recently finished with the installation of a new culvert alongside the existing one.

Over the next several weeks, we will be diverting the creek into the new tunnel (at points 1 and 2 on the plan). This will involve the creation of a new riverbed using earth-moving equipment. The works are not forecast to be disruptive but neighboring properties may notice construction activities taking place.

Retaining wall construction

The railway line is on an embankment in this area. We need to build a retaining wall so that we can build up the ground and add a new railway line alongside and to the north of the existing lines (see graphic below). The railway corridor also needs to be wide enough to accommodate future overhead line electrification gantries.

Construction of the retaining wall will involve earth moving equipment, compaction and piling activities.

This work may be disruptive to neighboring properties and we apologize for any inconvenience. The retaining wall will be approximately 6m at its highest point.

What does this mean for you?

We will take precautions to minimize the effects of the construction activities on the local community, such as restricting the idling of nonessential equipment to reduce noise, limiting reverse operations, and pointing lights away from residential windows - but you may notice some noise, dust and site lighting from the construction activities.

Properties close to the construction activities could experience some vibration from the piling. Noise and vibration monitoring has been set up to ensure that these levels are within exposure limits.

The corridor will be accessed through the access roads shown on the map (at points 3, 4 and 5 on the plan overleaf). Pedestrians are not expected to be affected by this work but should be vigilant of the increased number of construction vehicles.

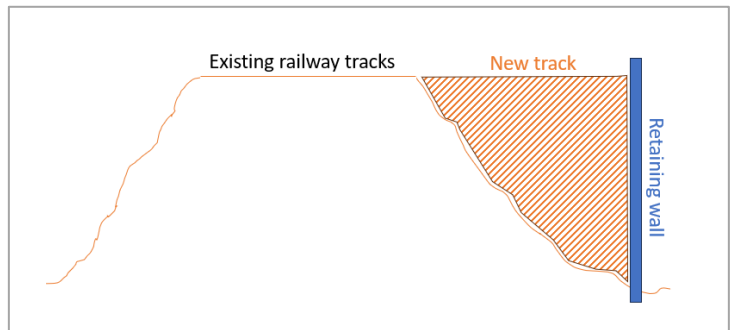
Hours of Work

The work listed above will include a combination of day and night shift, and weekend work may be required periodically.

Day shift work will occur between the hours of 7:00 a.m. and 7:00 p.m. five (5) days per week (Monday to Friday) and night shift work, where required, will occur between the hours of 7:00 p.m. and 7:00 a.m. five (5) days per week (Sunday to Thursday). Please exercise caution around active construction sites. We apologize for the inconvenience.

Questions

If you have any questions or concerns about this work, please contact us any time at TorontoEast@metrolinx.com. For more information on GO Expansion in your community, visit our website at www.metrolinx.com.



As with all construction, work may be adjusted, rescheduled or extended due to weather conditions or unforeseen circumstances.

Cet avis de travaux de construction est disponible en français sur demande.
Si vous êtes intéressé, veuillez envoyer un courriel à TorontoEast@metrolinx.com.

Contact Us:

Write to us at: TorontoEast@metrolinx.com

Find us on Twitter [@Metrolinx](https://twitter.com/Metrolinx)

Visit the website: <https://www.metrolinx.com/en/projects-and-programs/lakeshore-east-line-go-expansion>

Scan the QR code to the right to get Lakeshore East Line GO Expansion updates to your device via Twitter!

