

# Eastern Avenue Long Term Lane Closure

Starting October 2023

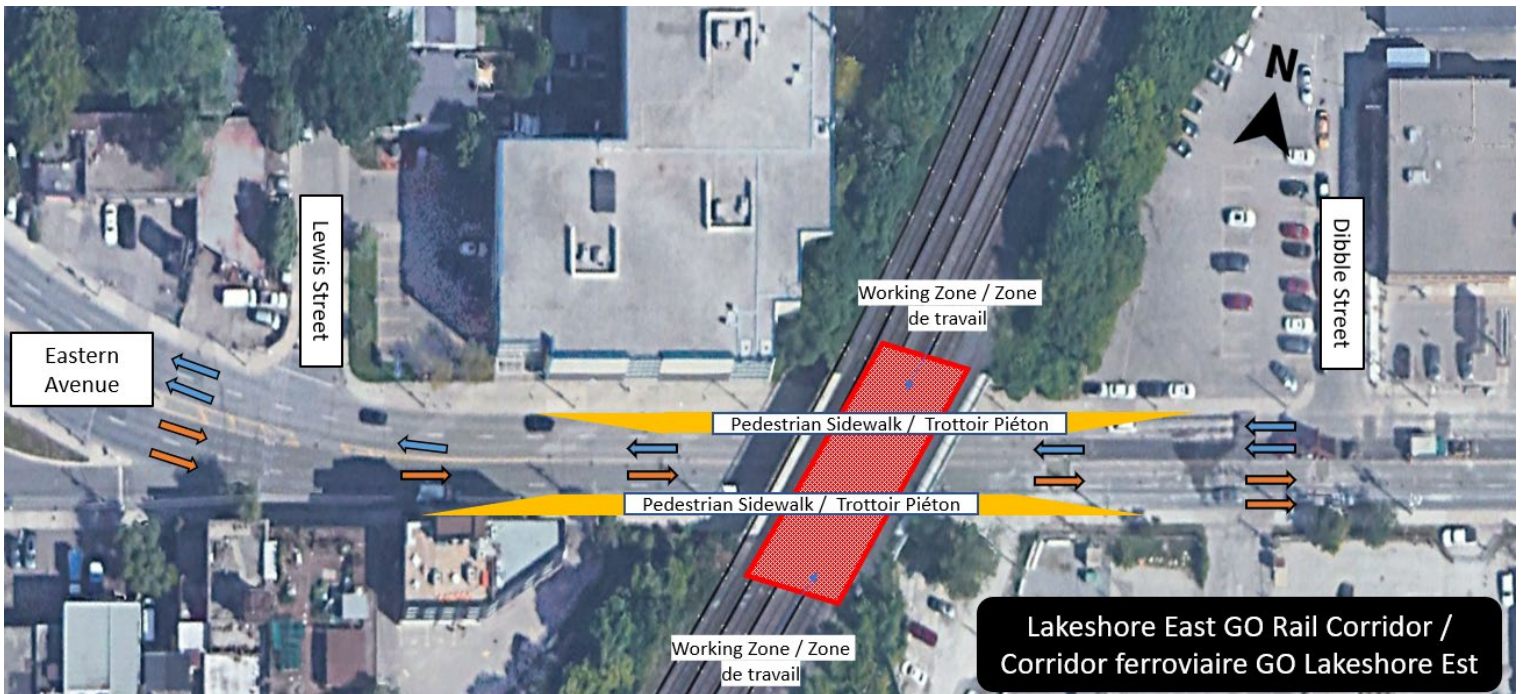


Figure 1: Aerial map showing long-term curb lane closure and sidewalk detour. For illustrative purposes only. Not to scale

## What Is Happening

With the ongoing demolition work and reconstruction of the Eastern Avenue Bridge, a series of lane closures on Eastern Avenue, as highlighted below, will be in effect starting mid-October 2023 until October 2026, to create a safe working zone for the crews and vehicle traffic.

- **Oct 16 - Nov 13, 2023:** Two westbound lanes and sidewalk will be closed. The eastbound lanes will remain open to a single lane in each direction and the sidewalk will remain open.
- **Nov 14 - Dec 15, 2023:** Two eastbound lanes and sidewalk will be closed. The westbound lanes will remain open to a single lane in each direction and the sidewalk will remain open.
- **Dec 15 - Oct 2026:** Long-term curb lane closure will be in place reducing two lanes to one in each direction between Lewis and Dibble Streets. Pedestrian access will be maintained on both sides of Eastern Avenue (as shown in Figure 1 above).

## Project Overview

The new East Harbour Transit Hub will be located just east of the Don River and north of Lakeshore Boulevard East, in the Riverdale neighbourhood. This interchange station, on the Lakeshore East GO line, will provide seamless connectivity to more GO services, the future Ontario line, and the TTC Broadview streetcar, in a corner of the city that is poised for growth. The East Harbour Transit Hub will also divert some of the commuter traffic away from Union Station and will be an alternate station for transferring between transit lines and services.

### What To Expect

- Residents and business in the area should expect some noise, vibration, and dust.
- Our operation staff will take precautions to minimize disturbances to residents, businesses, and commuters, including but not limited to the following: no idling of non-essential equipment, pointing lights away from residential windows, and work areas will be safely delineated.

### Hours of Work

- Day work will take place between the hours of 7:00 am and 5:00 pm.
- There will be sporadic overnight work.

### Location of Work

- On Eastern Avenue, between Lewis Street and Dibble Street.

### Pedestrian Details

- Pedestrians will be required to follow detour signs.

### Traffic Details

- Two Westbound lanes and sidewalk on Eastern Avenue, as indicated above.
- Two Eastbound lanes and sidewalk on Eastern Avenue, as indicated above.
- From Lewis Street to Dibble Street, the Westbound and Eastbound curb lanes will be closed, and the sidewalks diverted.

### Transit Information

- For more information visit [gotransit.com](http://gotransit.com) and [ttc.ca](http://ttc.ca)

### Community Engagement

- Metrolinx has a dedicated community engagement team that works with residents and businesses in the Toronto East area. If you have any questions, please contact us using the information provided below

Information as of: **October 04, 2023**

This notice can be translated into a different language upon request by emailing us at [TorontoEast@metrolinx.com](mailto:TorontoEast@metrolinx.com)

Cet avis est disponible en français sur demande. Si vous êtes intéressé, veuillez envoyer un courriel à [TorontoEast@metrolinx.com](mailto:TorontoEast@metrolinx.com)

### Contact Us:

- ☎ Call us: **416-202-3900**
- ✉ Write to us at: [TorontoEast@metrolinx.com](mailto:TorontoEast@metrolinx.com)
- 🐦 Find us on Twitter and Instagram [@GoExpansion](https://www.instagram.com/GoExpansion)
- 🌐 Visit the website: [www.metrolinx.com/eastharbour](http://www.metrolinx.com/eastharbour)
- 📧 Subscribe to our e-blast: [www.metrolinx.com/subscribe](http://www.metrolinx.com/subscribe)