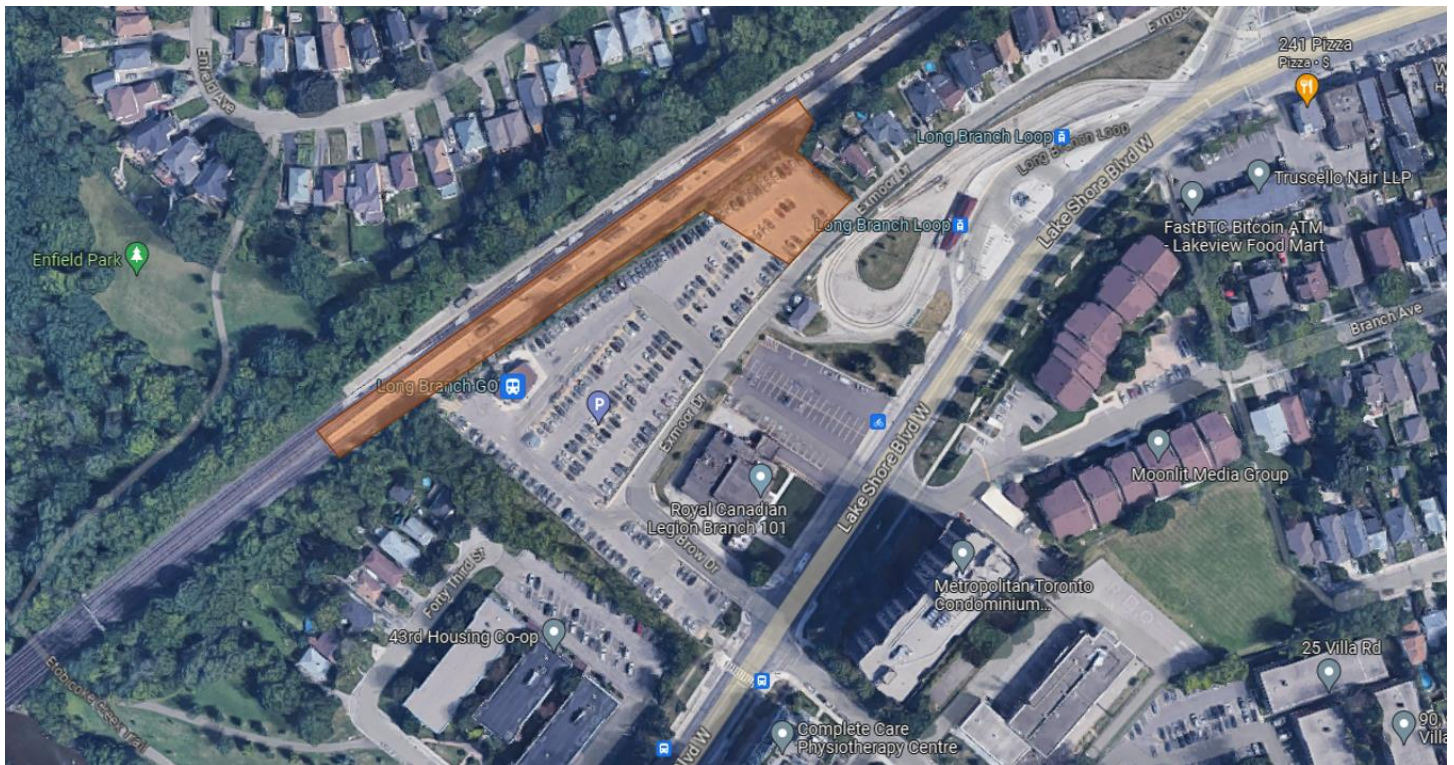


Long Branch GO: Weekend & Overnight Work

From October 27 to 30, 2023



An aerial image showing the approximate extent of the work zone

Project Overview

Metrolinx's GO Expansion program is delivering more GO service across the network, including trains every 15- minutes or better on the Lakeshore West Rail Corridor. To support GO Expansion, we are upgrading the rail network and our GO stations to enable more frequent and fully accessible service. This includes accessibility and amenity improvements to Toronto's Long Branch GO Station located at 20 Brow Drive in Etobicoke.

What You Need to Know

From 10.00pm on 27 October 2023 until 5.00am on 30 October 2023, we will realign Track 3 to accommodate wider platforms for future GO Transit services. The construction activities to realign the track will be continuous over this entire period, during the day and the night, so that we can reinstate the track on the Monday morning.

What to Expect

- We will be using 'railavators' and a 'tamper' to realign the existing track. We will also be using a dump truck and/or ballast car to distribute ballast along the construction area.
- Other equipment that will be used includes a front-end loader and construction support vehicles such as rail pullers and a mechanics truck which will be on standby.
- Residents should expect some noise, vibration and dust.
- Site lighting will also be used for the duration of the construction activities.
- Our construction teams will take reasonable measures to minimize disturbances to residents.

Hours of Work

- The work will be continuous from 10pm on 27 October to 5am on 30 October, with only brief periods of inactivity.

Pedestrian Details

- Please take care when travelling near construction areas and watch for additional signs directing pedestrians as detours may be required.
- Clear and defined walking paths will be maintained to ensure pedestrian safety.

Mitigation Measures

- All construction equipment will be loaded and staged on site.
- Pointing lights away from residential windows.
- Work area will be safely delineated.
- Monitoring of construction noise and vibration.
- Street sweeper and cleaning as required.

Traffic Details

- Construction vehicles and equipment will be active but mainly contained within the worksite.
- Please be aware that there may be a slight increase in deliveries to the worksite in advance of the main construction activities taking place.

Transit Information

- The station will be closed for the duration of the construction activities but will reopen on Monday October 30th with normal GO Transit services.

Community Engagement

- Metrolinx has a dedicated community engagement team in place that works with residents and businesses in the Toronto West area.
If you have any questions, please contact us using the information provided below.

Information as of: 25 October 2023

This notice can be translated into a different language upon request by emailing us at yourproject@metrolinx.com

Cet avis est disponible en français sur demande. Si vous êtes intéressé, veuillez envoyer un courriel à yourproject@metrolinx.com

Contact Us:

Call us: 416-202-6911

✉ Write to us at: TorontoWest@metrolinx.com

🐦 Find us on Twitter [@GOExpansion](https://twitter.com/GOExpansion)

🌐 Visit the website: www.metrolinx.com/longbranch

📧 Subscribe to our e-blast: www.metrolinx.com/subscribe