


Corktown Station CLC

October 26, 2023



The Ontario Line

Future home
of Corktown
Station

 METROLINX

Questions?

-  metrolinx.com/ontarioline
-  ontarioline@metrolinx.com
-  @OntarioLine
-  416-202-5100

Scan me!



Don Yard Enabling Works

Lower Don Bridge and Don Yard

Current Work

Major utility, track and signal relocations have been completed to enable the upcoming bridge and portal construction at the Don Yard.

- Completed milestones include:
 - Relocated 3.5km of rail to make room for portal construction
 - Three new signals and six switches installed.
 - Relocated a 400mm watermain to make space for the new Ontario Line bridge over the Don River

Upcoming Work

In December 2023, construction crews will mobilize to the Don Yard site and begin preparation works for the new portal and bridge

The scope of work will include:

- Building a new bridge over the Lower Don River to carry the Ontario Line tracks
- Constructing a portal and cut-and-cover tunnel to support the transition of the Ontario Line from surface to tunnel

Don Yard



Don Yard Aerial View.



Artist's Rendering of completed project. Subject to change.

Archaeological Investigations

Overview of the excavated area in Corktown

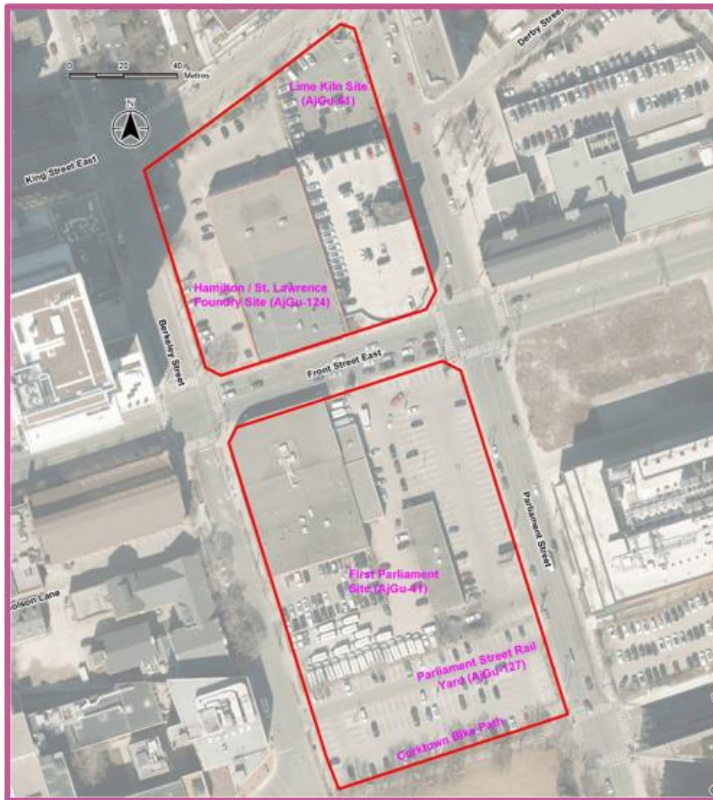
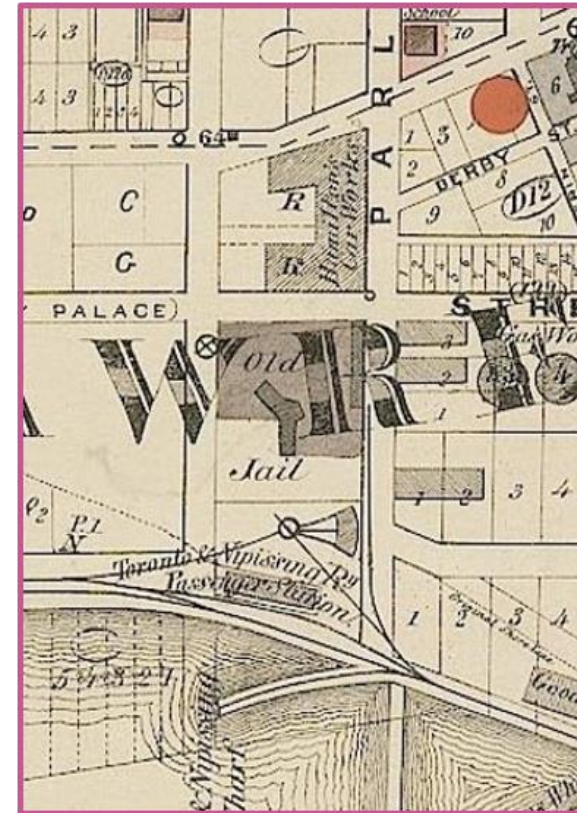


Image courtesy of Stantec

Map showing general locations of archaeological sites being excavated



Excerpt of the 1872 Wadsworth and Unwin's Map of the City of Toronto depicting the Corktown station area, the Gaol to the south and the Foundry to the north

Archaeological Discoveries



Exposed bases of lime kilns from the Lime Kiln Site (AjGu-61), facing southwest



Sample of typical artifacts found at Corktown



Profile of an excavated privy at 250 Front St. East, facing northeast



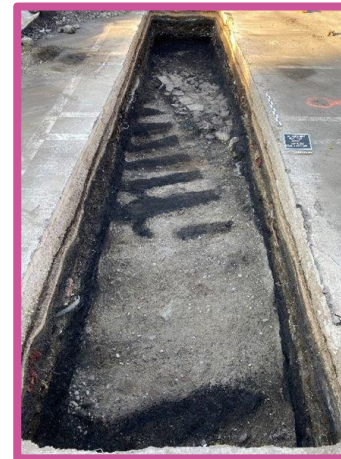
Wooden barrels from a water cistern at the Hamilton/St. Lawrence Foundry Site (AjGu-124)



Typical mid-19th century brick used at the First Parliament Site (AjGu-41) - probably dating to the Gaol on the site - or the Lime Kiln Site (AjGu-61)



Stage 2 trench with architectural remains at 265 Front Street East, facing southwest



Stage 2 trench showing railway remains associated with the Parliament Street Railway Yard (AjGu-127), facing southwest



Excavating a Stage 2 trench on a City of Toronto bike path, facing west

Construction Update

Current Activities:

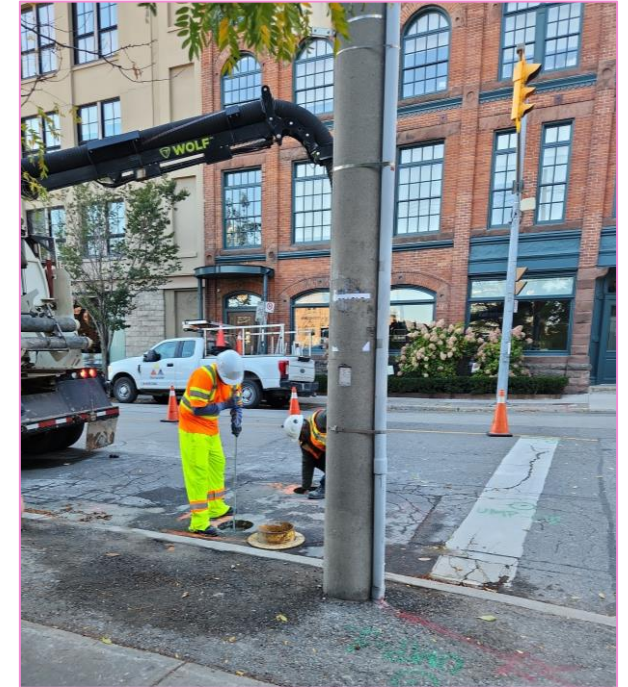
- Utilities investigations underway; work has moved from nights to daytime
- Hydrovac truck estimated on-site as of October 23 through November 1
- Monitoring device installation currently underway, expected to be complete by the last week of October
- This work shifted from nights to daytime, and requires use of hydrovac truck to complete
- Groundwater sampling completed October 23 to ensure lack of contaminants

Upcoming Work (Late Fall 2023):

- Tree removals
- Installation of site hoarding and covered pedestrian walkway
- Nighttime acoustic leak detection at water pipes (no noise)

Early 2024:

- Site grading
- Erosion and sediment control
- Sewer discharge and water treatment system
- Working platform preparation
- Preparation of site amenities



Tunnel Boring Machines

- The tunnel boring machines (TBMs) will be launched at Exhibition Station and move in one direction heading east along the alignment
- Once tunnel boring is complete, the TBMs will be dismantled at the Don Yard Portal and extracted through the Corktown south shaft
- Spoils and muck from the tunnel boring machines will be taken out at Exhibition station
- **Tunnel boring is not expected to start until 2025**



Photo courtesy of Metrolinx Eglinton Crosstown West Extension project.



Artist's rendering – subject to change. Transit-Oriented Community proposals not shown.



Corktown TOC illustrative render - subject to change.