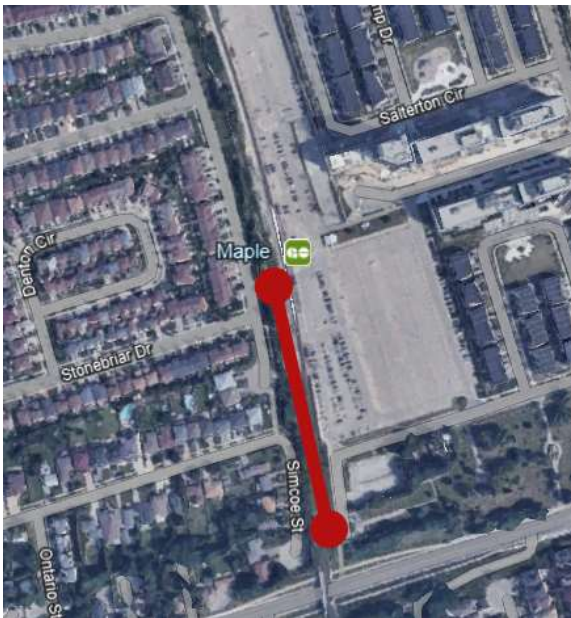


Maple GO Curb Installation

November 3-6, 2023

(10:00 PM on Friday to 3:00 AM on Monday)



Overview

Metrolinx is continuing to make progress on Maple GO Station improvements! During an upcoming weekend shutdown of the Barrie Line (November 3-6, 2023), we will be removing and replacing the concrete curb at Maple GO Station. The new curb will feature yellow tactile plates for increased visibility and improved safety.

What does this mean for you?

Nearby residents may experience some minor noise and vibration from the use of construction equipment. Noise and vibration monitors will be in place to ensure that there are no exceedances. Lights will also be turned away from residential areas to minimize impact. We apologize for the inconvenience and thank you for your patience as we complete this critical work.

What is the timing and duration?

This work will take place during the day and overnight. It will begin at 10:00 PM on Friday, November 3rd, 2023 and continue until 3:00 AM on Monday, November 6th, 2023.

Questions

We have a dedicated community relations team in place to work with residents and businesses in York Region. If you have any questions or concerns about this work, please contact us anytime at YorkRegion@metrolinx.com.

Information as of October 17, 2023



Write to us at: YorkRegion@metrolinx.com
Call us at: 416-202-4453
Find us on Twitter [@GOExpansion](https://twitter.com/GOExpansion)
Visit the website: www.metrolinx.com/barrie

As with all construction, work may be adjusted, rescheduled or extended due to weather conditions or unforeseen circumstances.