

# King/Bathurst Construction Liaison Committee

November 2, 2023

# Agenda

## Welcome (5 minutes)

- Introductions
- Land Acknowledgement
- Introductions

## Presentation (25 minutes)

- Construction Updates
- Demolition Updates
- Community Engagement
- We Are Here For You

## Feedback and Discussion (30 minutes)





# Safety Moment

## Be ready for winter with the right tires and emergency kit

### 1. Winter Tires are Designed for Cold Weather

As a driver, it's important to ensure your vehicle is safe during winter. Clear ice and snow from your windshield and mirrors. Make sure your car is equipped with winter tires; they're specifically engineered for use in cold temperatures (7° C or lower) and their improved treads will keep a better grip to the road.

### 2. Winter Driving Can Be Unpredictable

Winter weather can change quickly. During snowy or whiteout conditions, you should be ready for anything. Keep a safe distance when driving and keep your eyes on the road.

### 3. Ensure you're ready for an Emergency

Gloves, hats, an external battery, a blanket, first aid kit, hand and feet warmers, and pylons stored in your trunk can come in handy in case of a roadside stop or emergency.

### 4. When in Doubt, Take Transit or Stay Home

If you're not confident in your winter driving ability, don't leave it to chance. Take transit or stay home.



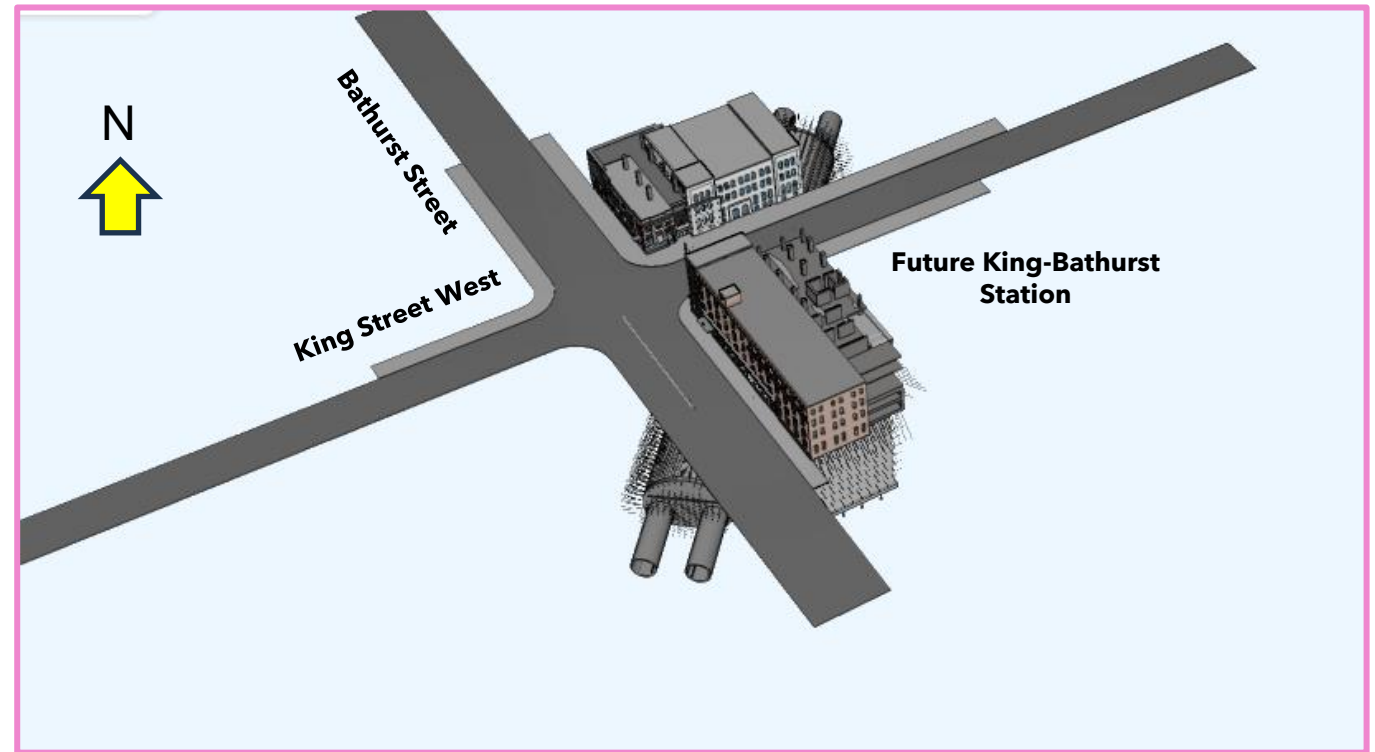


# Construction Update

# King-Bathurst Station Layout

## 1 The Tunnels Orientation Station Building Layout

- **Two entrances will be built on the east of Bathurst Street**, one on the north side of King Street West, and one on the south side of King Street West.
- A sequential excavation (SEM) cavern will connect the station to the tunnel (pictured at right).
- At the north entrance, the buildings are being demolished and the heritage features stored off-site until completion.
- At the south entrance, part of the heritage façade will remain in place for the duration of the station. Two additional buildings required for the station will be demolished.
- Both entrances include an opportunity integrated development above.



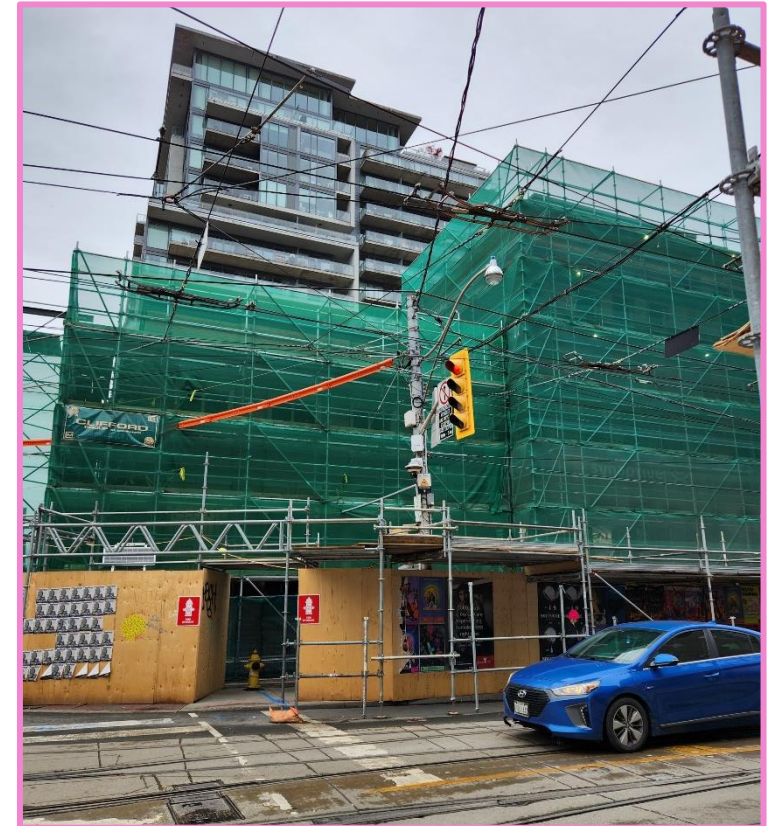
# Completed Work

## 2

### Completed Work

#### Completed Work

- Brick removal process at 662 King Street West completed; other brick removals remain ongoing process.
- Building abatement at all sites.
- Interior propping of existing structures and installation of support scaffolding.
- Underground utility investigations.
- Monitoring equipment installations, pre-condition foundation assessments and foundation testing nearing completion.

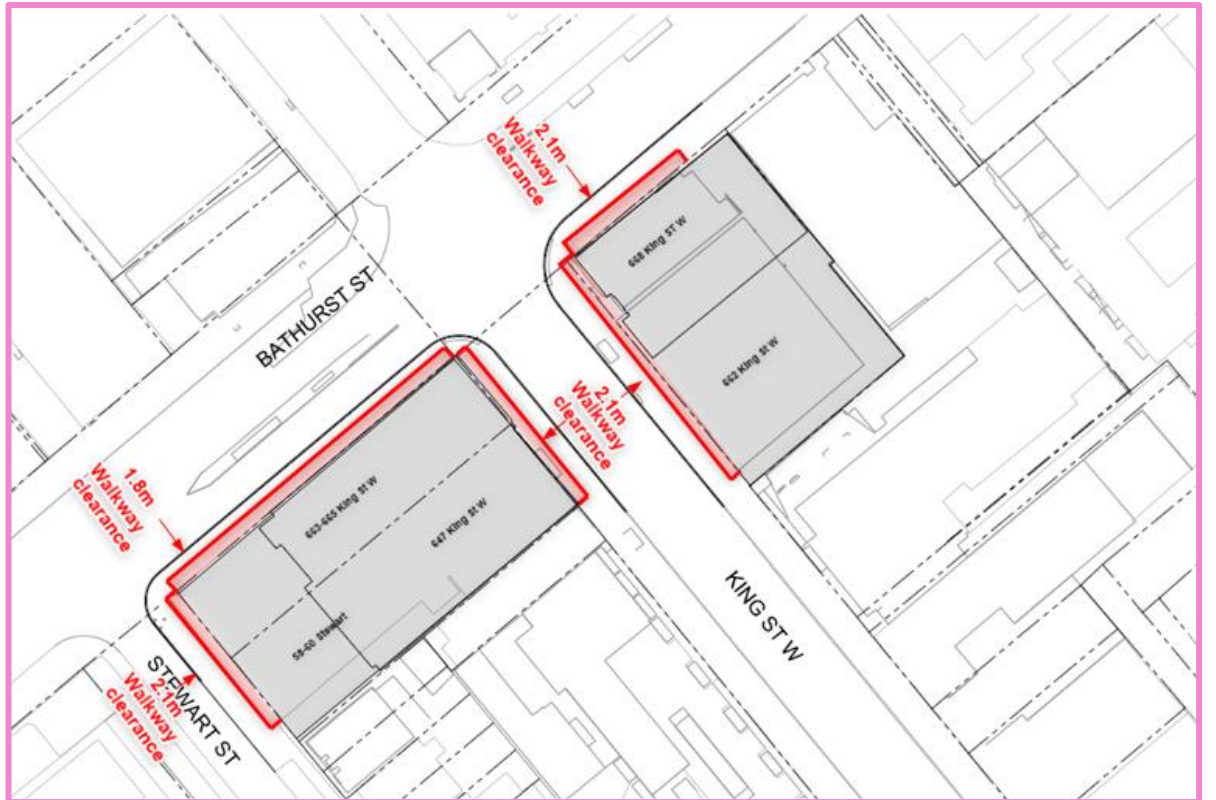


# Site Hoarding

## 3 Temporary Hoarding and Fencing in Place to Protect Pedestrians

### Completed Work

- In collaboration with the City of Toronto, to ensure safe practices for vehicles and pedestrians, temporary hoarding, covered pedestrian walkway and foundational platform installation is complete.
- Pedestrian tunnels at intersections have had panels removed based on community feedback, to ensure maximum visibility and safety at intersections.
- Metrolinx signage, black paint and graffiti cleanup to be installed along length of both south and north side hoarding / pedestrian tunnels, to ensure constant state of good repair.





# Ongoing Demolition

## 4 Demolition and Preparation for Mobile Crane Delivery

### Activities In-Progress

- Brick dismantling and demolition of buildings at four station-site properties remains ongoing (662 King Street West, 668 King Street West, 647 King Street West, 58-60 Stewart Street).
- Preparation included the safe removal of all existing piping, electrical, water and other services and included removal of asbestos.
- All demolition work with designated substances is done in accordance with Ontario Regulation 278/05.



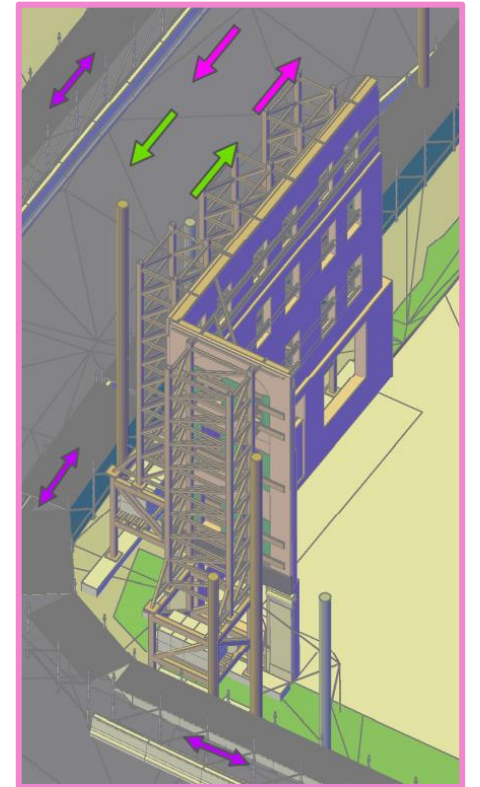
# Upcoming Work This Fall

## 5

### Construction Look-Forward

#### Fall/ Winter 2023

- Completion of demolition and panelization work (visualized at right, as retained in-situation building panels on the south side of King Street West).
- Upon completion of basement backfill work, clearance of future crane paths and establishing crane pad areas, cranes will be delivered. This work provides solid foundations for cranes, as well as air clearance at all angles, to ensure cranes don't encroach on existing structures and properties.
- Installation of geotechnical instrumentation and monitoring points to support construction. Hydrovac will assist with excavation to ensure environmental safety of excavated material. Sites will have spill kits on premises as backup as well.



# Upcoming Work 2024

## 6

### Construction Look-Forward

#### Early 2024

- Preparation of site for SOE (support of excavation, excavation, protective shelter installation - visualized at right.)
  - Grading
  - Drainage install
  - Environmental measures

#### Spring / Summer 2024

- Shelter installation to occur on the site side, to ensure work crews and machinery are covered by a large-scale tent, protecting work areas during all seasons.
- Excavation of North and South Shaft





# Heritage Work - Southside

## 7 Preservation of Heritage Facades Along King Street West

### Facade Dismantling

- Brick removed, salvaged and catalogued from north, west and east facades.
- Dismantled heritage facades will be stored off-site for the duration of the station construction, to be returned and reinstalled as part of the final station layout.
- **Heritage buildings will be reconstructed and restored once station construction is complete.**





# Heritage Work Northside

## 8 Preservation of Heritage Facades Along King Street West

### Façade Dismantling

- Brick removed, salvaged and catalogued from north, west and east facades.
- Dismantled heritage facades will be stored off-site for the duration of the station construction, to be returned and reinstalled as part of the final station layout.
- **Heritage buildings will be reconstructed and restored once station construction is complete.**



# Traffic Management Plan

## 9 All Preparatory Works are Taking Place on Metrolinx Property

### What can I expect?

- Installation of the traffic **set-up is now complete**. It had been installed along Bathurst Street, followed by King Street. The current set-up is expected to remain in place through January 2024.
- **Construction vehicles, trucks, and equipment** will come and go from the site using the routes noted in the map to the right.
- Necessary equipment and trailers will also be brought into the work area.
- No additional road closures, lane restrictions or sidewalk closures are required for this preparatory work.
- Noise associated with construction works should be expected.
- No overnight work expected.
- There will be no major lane closure.

The pedestrian route is marked in green.  
Closed street parking marked in red.



# Community Engagement

10

## Ongoing Community Canvassing and Participation

- **Project staff and representatives will commence ongoing interaction with the community, for the duration of the project. Activities will include:**
- Pop-ups presences in the community (parks, events, markets)
- Pop-ups in condo lobbies.
- In-person and virtual consultation with residences and businesses.
- Shop Local digital campaigns, supporting communities affected by Ontario Line Construction.
- News, progress and information shared in the Ontario Line newsletter (currently over 6,600 subscribers).

# We Are Here For You

## 11 Community Engagement Contact Information

Metrolinx will keep the community, residents and businesses informed by providing project updates, seeking input and feedback, and addressing questions and concerns effectively and quickly.

Connect With Us:

- Bradley Naismith, Community Engagement Advisor [Bradley.Naismith@metrolinx.com](mailto:Bradley.Naismith@metrolinx.com), 437-326-0785
- Mark Clancy, Senior Manager, Community Engagement [Mark.Clancy@metrolinx.com](mailto:Mark.Clancy@metrolinx.com), 647-449-2857

Email [OntarioLine@metrolinx.com](mailto:OntarioLine@metrolinx.com)

Telephone 24/7 @ 416-202-5100

Ontario Line e-newsletter @ [Metrolinx.com/OntarioLine](http://Metrolinx.com/OntarioLine)

Follow us on social media @ OntarioLine





KING-BATHURST





PHO-BENHAI RESTAURANT

KING - BATHURST STATION

