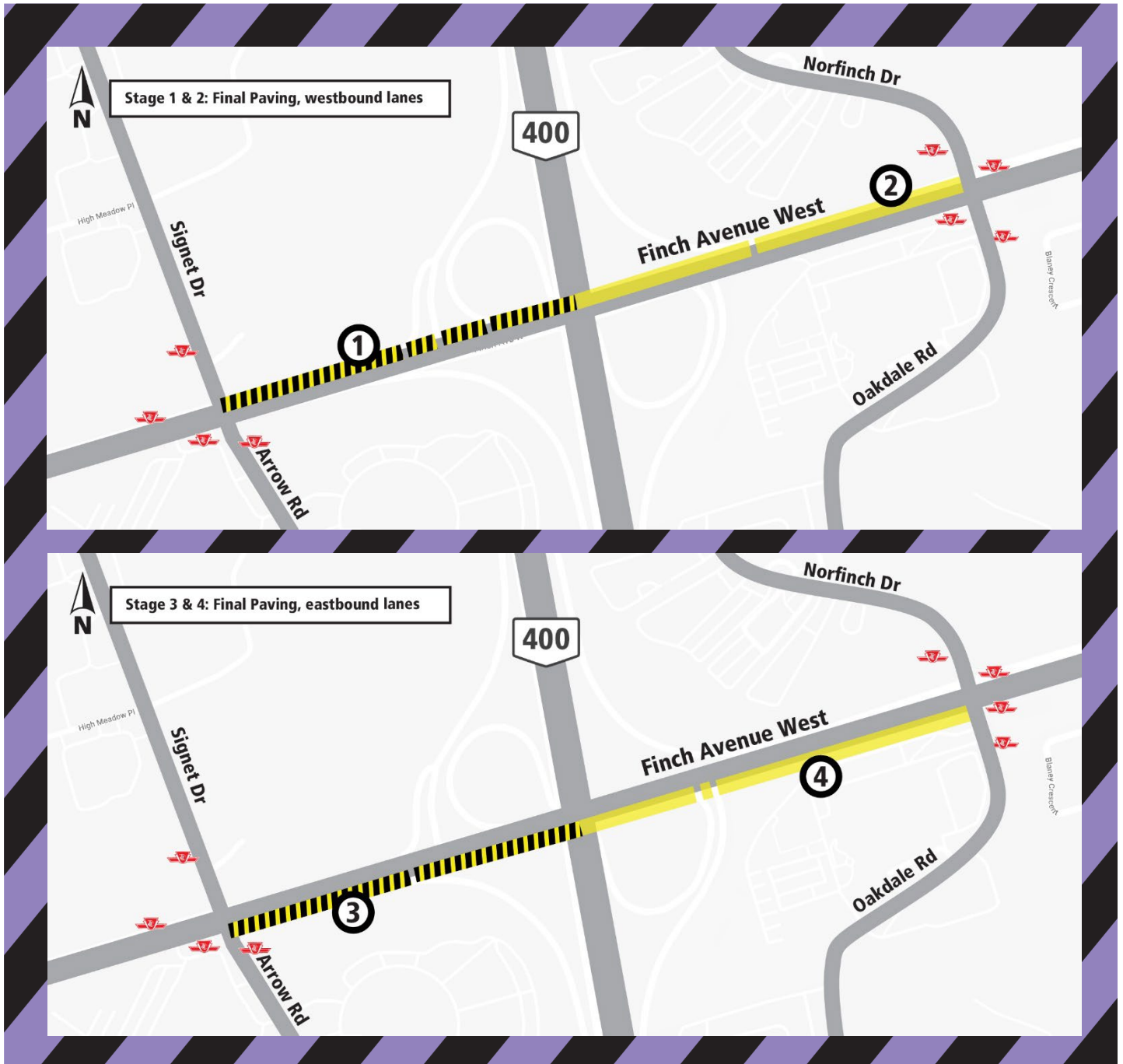


# Update: Temporary Traffic Changes on Finch Avenue West Between Signet Drive to Norfinch Drive

October 30, 2023 to Fall 2023



**TIMING**

- October 30, 2023, to Fall 2023, approximately.
- Stage 1: Westbound lanes, Signet Drive to Hwy 400.
- Stage 2: Westbound lanes, Hwy 400 to Norfinch Drive.
- Stage 3: Eastbound lanes, Signet Drive to Hwy 400.
- Stage 4: Eastbound lanes, Hwy 400 to Norfinch Drive.
- Work hours: 7:00 a.m. to 5:00 p.m. and overnight 7:00 p.m. to 6:00 a.m., if required.
- There may be weekend work.

**IMPACT**

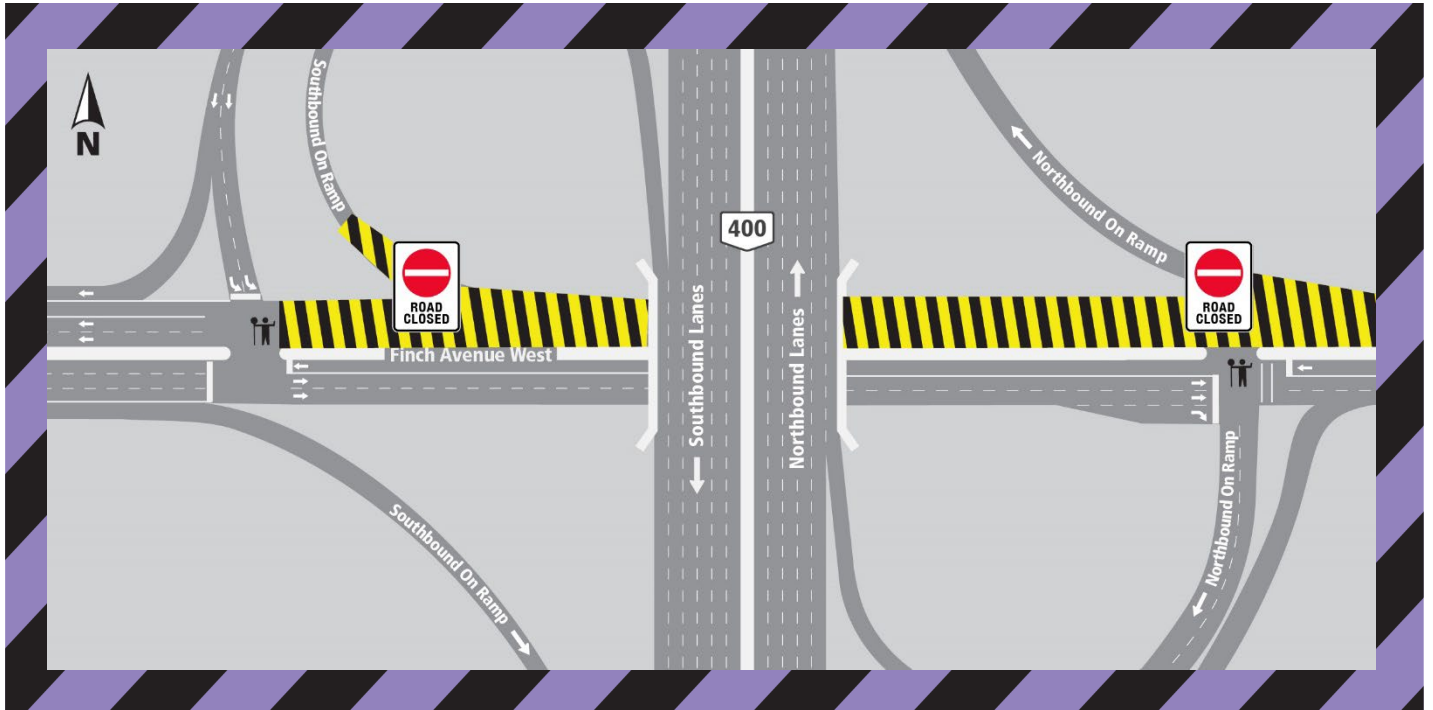
- Rolling temporary lane closures.
- Periodic sidewalk and crosswalk closures.
- Temporary relocation of TTC bus stops, if needed.
- Short-term closure of Northbound and Southbound off-ramps, as needed.
- Minor field modifications may occur when needed to complete work safely and minimize impact on the public.

**LOCATION**

- On Finch Avenue West between Signet Drive to Norfinch Drive.

**WORK DESCRIPTION**

- Road Works.
- Final paving.



### Detailed Description

As part of the Finch West Light Rail (LRT) project, crews will be performing road works and final paving on Finch Avenue West between Signet Drive and Norfinch Drive. This work will begin on October 30, 2023, and will last until Fall 2023, approximately.

Minor field modifications may occur when needed to complete work safely and minimize impact on the public. There will be overnight work if required.

There will be a Paid Duty Officer, flaggers, and detour signs to direct traffic, as needed.

Noise and vibration will be monitored when required during these activities.

### WORK HOURS:

- Work will primarily occur Monday to Friday from 7 a.m. to 5 p.m. There will be overnight and/or weekend work 7 p.m. to 6 a.m., if required.
- Signs are installed to keep residents informed about the closure.
- Dates are tentative and may change. Please visit us at [www.metrolinx.com/finchwestlrt](http://www.metrolinx.com/finchwestlrt) for up-to-date information.
- Inclement weather or unforeseen circumstances may delay work activities.

### WHAT TO EXPECT:

- Heavy trucks and equipment in the area.
- Due to the nature of the work, at times there will be dust, noise and vibration associated with this work.
- Nearby businesses and residents can expect noise from excavators, bobcats, vacuum trucks, and other construction equipment caused by road work activities.
- Expect delays near work zones.
- A minimum of one lane of traffic in each direction along Finch Avenue West will be always maintained.
- There will be a Paid Duty Officer, flaggers, and detour signs to direct traffic, as needed.

### PEDESTRIAN, TRAFFIC AND TRANSIT DETAILS:

- Road and sidewalk restrictions are in place within the construction area to protect workers and the public.
- Please take extra care when walking near work sites, and always make eye contact with the driver before crossing in front of any equipment or vehicle.
- Pedestrians will be re-routed around the construction area when possible. For safety reasons, pedestrians may be diverted to the sidewalk on the opposite side.
- TTC bus stops will be closed or relocated away from work zones, as needed.
- Relocation of bus stops is done in consultation with TTC.
- Access to TTC will be always maintained, please visit [www.ttc.ca](http://www.ttc.ca) for more information.

Virtual Hours of Operation:  
 Monday- Friday, 9:00 a.m. to 5:00 p.m.  
 In person- by appointment.  
 Tel: 416-202-6500

### Contact Us:

Write to us at: [TorontoWest@metrolinx.com](mailto:TorontoWest@metrolinx.com)  
 Find us on Twitter @FinchWestLRT  
 Visit the website: [www.metrolinx.com/finchwestlrt](http://www.metrolinx.com/finchwestlrt)