



**The Ontario Line  
Lakeshore East Joint Corridor  
Early Works  
Construction Liaison Committee**

**November 9, 2023**

# LAND ACKNOWLEDGMENT

Treaties and Reserves in the Greater Golden Horseshoe



Let us take a moment to acknowledge we are on lands that have been, and continue to be, home to many Indigenous Peoples including the Anishnabeg, the Haudenosaunee and the Huron-Wendat peoples.

We are all Treaty people. Many of us have come here as settlers, as immigrants or involuntarily as part of the trans-Atlantic slave trade, in this generation, or generations past.

We acknowledge the historic and continued impacts of colonization and the need to work towards meaningful reconciliation with the original caretakers of this land.

We acknowledge that Metrolinx operates on territories and lands covered by many treaties that affirm and value the rights of Indigenous communities, Nations and Peoples.

We understand the importance of working towards reconciliation with the original caretakers of this land. At Metrolinx, we will conduct business in a manner that is built on a foundation of trust, respect and collaboration.

# CLC Code of Conduct



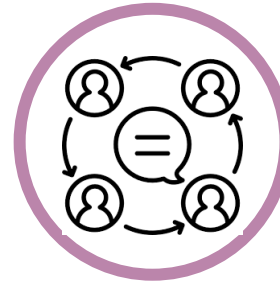
**Participate** fully, openly, and transparently in discussions, while also creating an environment where all members are encouraged to contribute and share their views.



**Participate** in a respectful manner towards other CLC members by using appropriate language.



Keep requested agenda and discussion items within the **mandate and scope** of the **Construction Liaison Committee**.



**Represent** their community's diverse perspectives and interests.



**Maintain** confidentiality of sensitive issues, when requested by participants.



**Commit** to equity, diversity and inclusion by supporting the participation of the whole community regardless of race, gender, class, sexuality, age or ability.

# Agenda

## Welcome:

- Land Acknowledgement
- Safety Moment
- Action Items

## Construction Update:

- Complaints and Issues Tracker
- Construction Progress:
  - Queen Street East Bridge
  - Dundas Street East Bridge
  - Logan Avenue Bridge
  - Eastern Avenue Bridge

## Discussion/Next CLC





# Safety Moment - Daylight Savings and Driving

**With daylight savings ending, here are a few safety tips while driving:**

- Avoid driving if you can - stay local, walk, bike, take transit!
- Ensure all lights on your vehicle are functioning
- Slow down and be extra vigilant
- Leave early to avoid rushing
- Avoid distractions - set phone to do not disturb
- Ensure windows and mirrors are clean to avoid glare
- If wearing glasses or contacts, make sure prescription is up to date



## October CLC Action Items

Action	Response
<p><b>Metrolinx and the Contractor to review road closure signage and update as needed.</b></p>	<p>Metrolinx and the Contractor perform daily site inspections to review site conditions, including traffic signage. The existing traffic signage complies with the traffic control plan that was reviewed and approved by the City of Toronto Transportation Services. Metrolinx and the Contractor will continue to ensure that signage complies with the approved traffic plans and is clear and informative for pedestrians, drivers, and cyclists.</p>
<p><b>Metrolinx and the Contractor to review current dust mitigation practices and confirm if any additional measures can be taken, specifically when works are taking place in the rail corridor adjacent to Jimmie Simpson Park.</b></p>	<p>Concerns regarding dust at Jimmie Simpson Park were shared with the construction manager and additional care will be taken when executing activities (excavation, saw cutting etc.) that produce dust, especially in the rail corridor adjacent to Jimmie Simpson Park. Two layers of filter cloth will be installed along the existing chain link fence throughout the park and on any temporary barriers that are installed to facilitate construction. The Contractor will also continue to wet materials (soil and concrete) prior excavation/demolition activities to mitigate dust levels.</p>
<p><b>Metrolinx to confirm if a representative from the East Harbour project will attend the next LSE JC CLC.</b></p>	<p>Metrolinx will continue to provide construction updates on the East Harbour project at the Lakeshore East Joint Corridor (LSE JC) CLC. The East Harbour project team and contractors will establish and attend their own CLC. Metrolinx will keep the LSE JC CLC members informed on when the East Harbour CLC will be established.</p>
<p><b>Metrolinx to include action items in the next CLC presentation deck.</b></p>	<p>Metrolinx will include action items in the CLC presentation deck.</p>

## October CLC Action Items Continued

Action	Response
<b>Metrolinx to schedule a meeting with the BIA to discuss options for artwork on hoarding at McCleary Park.</b>	Metrolinx has spoken to Riverside BIA and received dimensions of mural panels. Metrolinx will speak to City Parks staff to discuss the feasibility of placing the mural on the hoarding at McCleary playground.
<b>Metrolinx to schedule meeting with residents of First Avenue and the Technical Advisor to discuss the design of the wall at the end of First Avenue</b>	Meeting with Metrolinx Technical Advisors and residents of First Avenue is being scheduled.

# **Ontario Line Construction Update Lakeshore East Joint Corridor Early Works Construction**



# Complaints and Issues Tracker

Complaint / Issue	Resolution
<p><b>Noise</b></p> <ul style="list-style-type: none"> <li>Queen St E</li> <li>Oct 14, 2023</li> </ul>	<ul style="list-style-type: none"> <li>Business concerned about noise related to piling activities</li> <li>Resolution: Contractor installed noise barriers around equipment</li> </ul>
<p><b>Access</b></p> <ul style="list-style-type: none"> <li>Queen St E</li> <li>Oct 17, 2023</li> </ul>	<ul style="list-style-type: none"> <li>Business looking to load supplies on Queen St E where workers are stationed.</li> <li>Resolution: Crews will accommodate deliveries when possible. Work at this specific location has completed.</li> </ul>
<p><b>Access</b></p> <ul style="list-style-type: none"> <li>Queen St E</li> <li>Oct 26, 2023</li> </ul>	<ul style="list-style-type: none"> <li>Contractor vehicle parked in private parking lot.</li> <li>Resolution: Contractor was notified to remove vehicle immediately. Contractors reminded not park in the private parking lot.</li> </ul>
<p><b>Noise and Vibration</b></p> <ul style="list-style-type: none"> <li>Booth Ave</li> <li>Nov 2, 2023</li> </ul>	<ul style="list-style-type: none"> <li>Residents reported vibrations in their homes</li> <li>Resolution: Vibration was noticeable due to nature of construction. However, vibration monitor did not record any exceedances during the work. Contractor continues to monitor vibration levels.</li> </ul>
<p><b>Dust</b></p> <ul style="list-style-type: none"> <li>Dundas St E</li> <li>Nov 2, 2023</li> </ul>	<ul style="list-style-type: none"> <li>Resident concerned about dust from vehicles leaving access road.</li> <li>Pending: Contractor exploring additional mitigation measures to reduce construction dirt on city roads.</li> </ul>
<ul style="list-style-type: none"> <li>JSP Construction Fencing</li> <li>Nov 6, 2023</li> </ul>	<ul style="list-style-type: none"> <li>Community concerns about the look and height of the construction fencing along Jimmie Simpson Park and snow buildup along the fence.</li> <li>Additional details provided in the presentation.</li> </ul>

# Complaint Summary: Dundas St. E. and Logan Ave. Bridge Demolition

## Dundas St. E. Bridge:

- No complaints related to the bridge demolition and road closure at Dundas St. E.

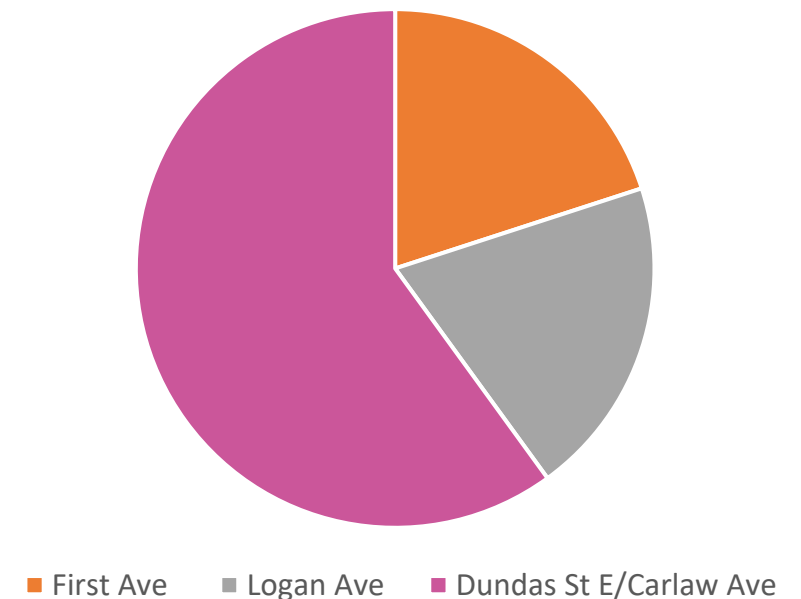
## Logan Ave. Bridge:

- Five noise complaints were received during the bridge demolition and road closure at Logan Ave.
- Four complaints were received via the 24/7 Metrolinx phone line and one complaint was received via email directly to Metrolinx.
- Immediate responses were provided and the outcome of all the calls was positive - residents appreciated that the demolition work was only taking place over one day.

## Mitigations:

- Concrete breaking was restricted at night to minimize noise disruption.
- Temporary noise barriers, noise reducing equipment and other on-site mitigations were implemented during both closures.
- In-house noise mitigation was provided to residents adjacent to the work.
- Good neighbour practices were reinforced at the start of each shift.

Complaint Locations





# Queen Street East Bridge

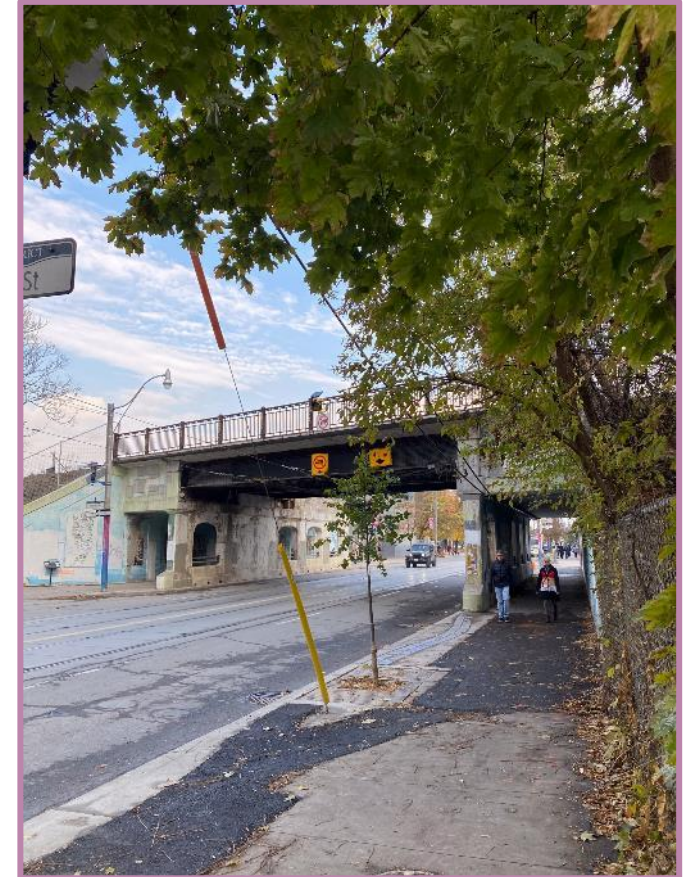
# Queen Street East Bridge: Completed Work

## Completed activities:

- ✓ Installed a new power cable for the TTC 501 Queen streetcar. The overhead cable was relocated beneath the sidewalk to enable bridge reconstruction. The traffic lane and sidewalk on the south side of Queen St. E. have now reopened.
- ✓ Finished installing all the temporary supports (piles) required to begin reconstruction of the east half to the bridge. In total, 29 piles were installed at the Queen St. E. bridge.



Queen Street south sidewalk looking west



Queen Street south sidewalk looking east



# Queen Street East Bridge: Ongoing and Upcoming Work

## Excavation and support works (daytime, weekday):

- The soil around the east side of the bridge will be excavated and a wood wall (shoring wall) will be installed to support the other side of the rail corridor. Tiebacks will be drilled into the side of the wall to hold back the excavation.

### Hours of work:

- Ongoing Monday - Friday between 7 a.m. - 7 p.m. , until mid-December

### What to expect:

- No traffic or pedestrian impacts are expected; this work will take place from within the rail corridor.
- Excavators, drill rigs, dump trucks, loaders, and skid steerers will be used to complete this work

## Bridge demolition (daytime, weekday):

- Bridge structures (abutments and piers) on the east side of the bridge will be demolished and removed. Broken concrete will be loaded into dump trucks and hauled off site for disposal

### Hours of work:

- Starting mid-December 2023 until February 2024; Monday - Friday between 7 a.m. - 7 p.m.

### What to expect:

- For safety, traffic lanes and sidewalks on Queen St. E. will be closed adjacent to the demolition work zone.
- Construction equipment including excavators, jack-hammers, saws dump trucks, loaders, and skid steerers will be used to complete this work.

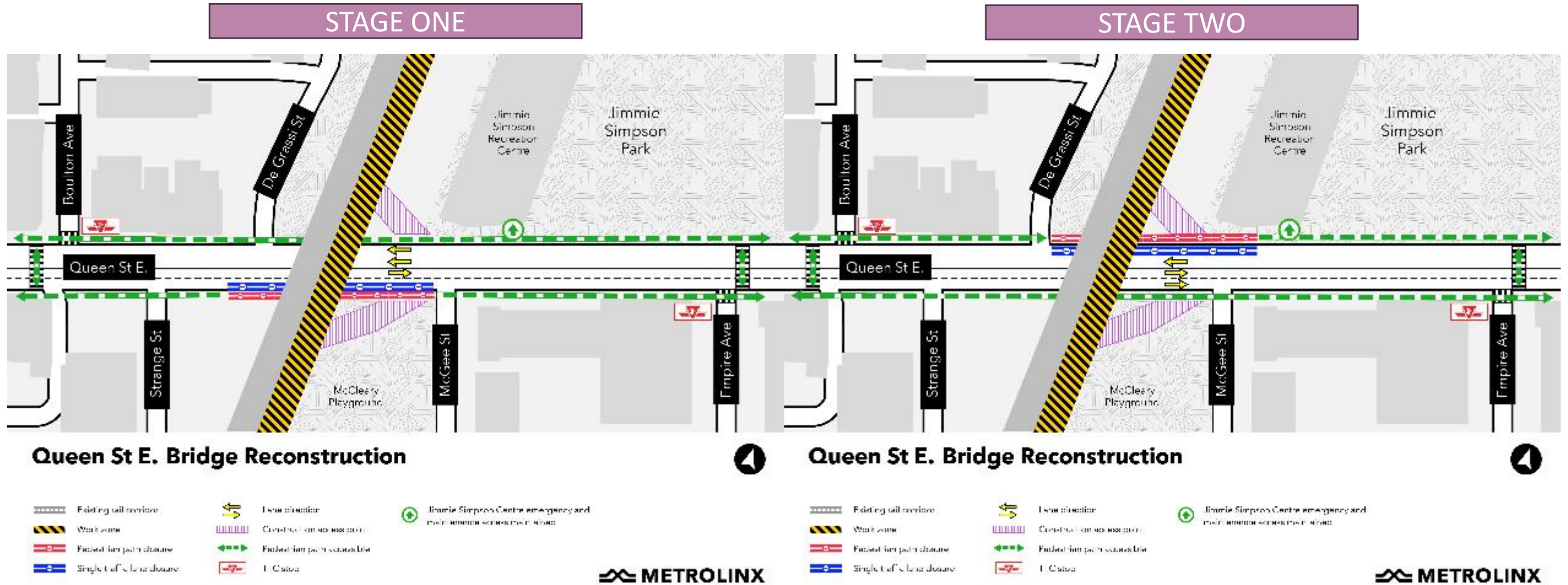


Shoring wall at Dundas St E bridge



# Traffic Configuration: Queen Street East Bridge Demolition Works

Starting as early as late December 2023 - February 2024





# Utility Relocations on Degrassi Street

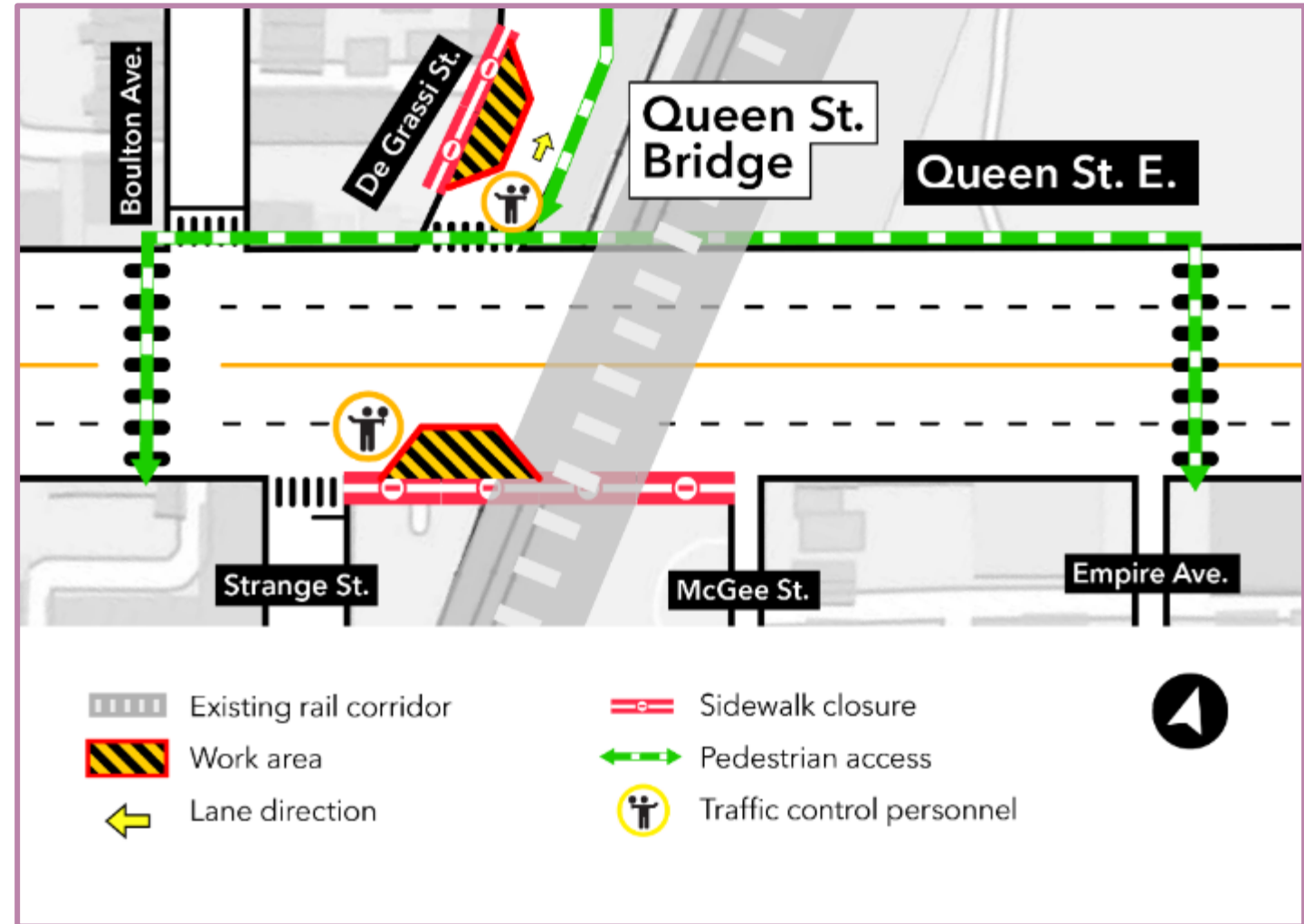
- Bell utilities running under Queen St. E. need to be relocated.
- To avoid closing the entire street, crews will use a specialized boring machine to dig a small tunnel under the road
- The new utilities will then be installed within the new tunnel
- De Grassi St. and a section of Queen St. E. will be the entry and exit points for the tunnel

## Hours of work:

- Starting late November, 2023 for approximately one week
- Monday - Friday, between 7 a.m. - 7 p.m.

## What to expect:

- Degrassi St. will be reduced to one lane only at Queen St. E. and the west sidewalk will be closed
- Eastbound traffic on Queen St. E. will be reduced to one lane
- A boring machine, hydro-vacuum truck, compressor, and other support equipment will be used to complete this work



# Utility Pole Installation on Queen Street East

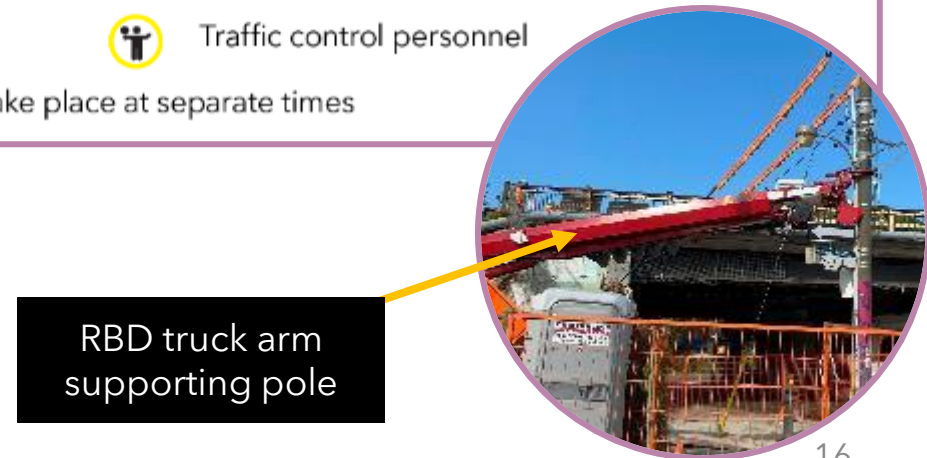
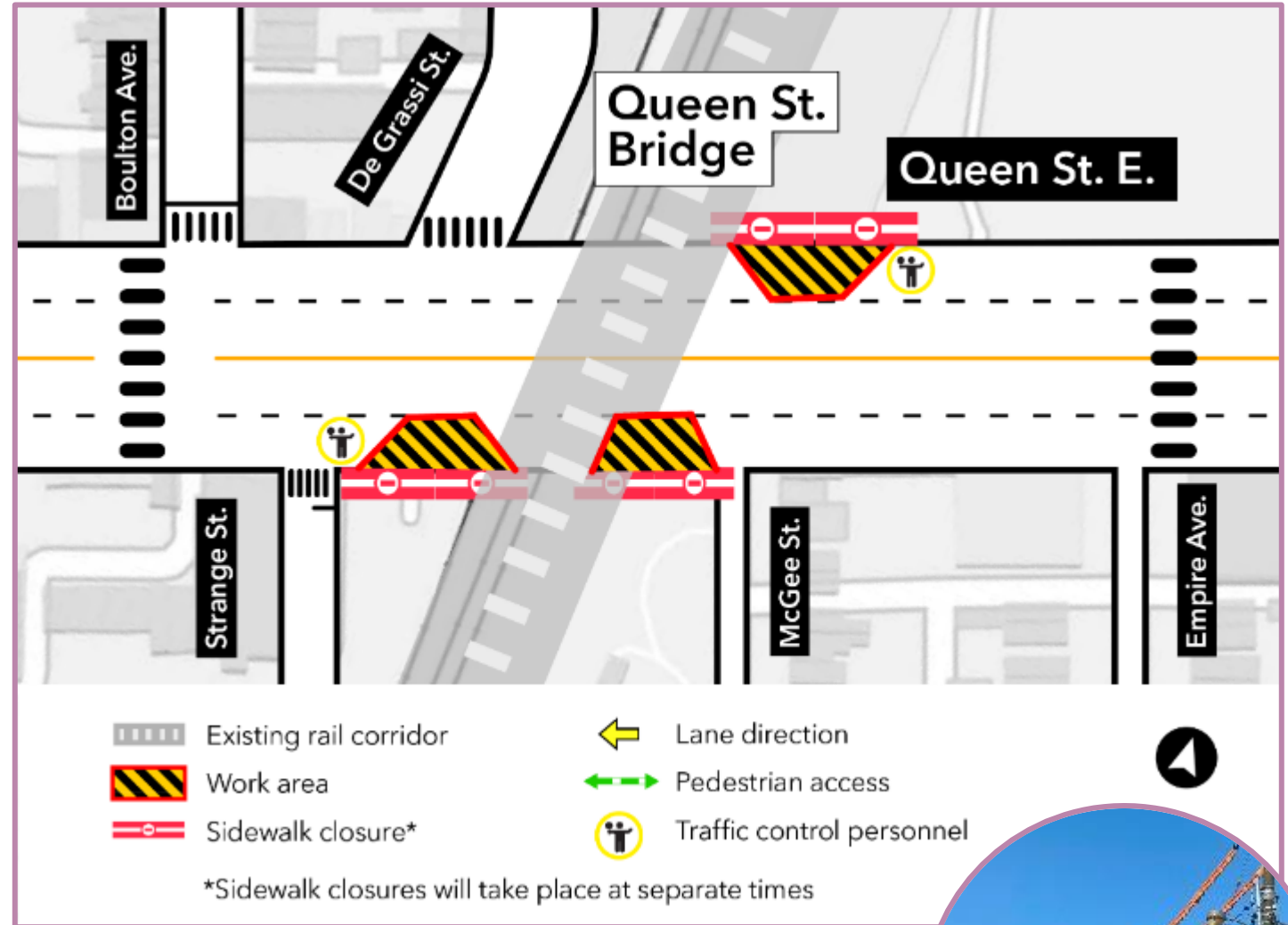
- Installation of five new electrical poles that will power to the TTC 501 Queen streetcar
- Crews will excavate five holes in the sidewalks on the north and south sides of Queen St. E. to create the pole foundations
- The poles will then be installed and surrounded with concrete

## Hours of work:

- Starting Monday, November 13, 2023 for approximately one month
- Monday - Friday between 7 a.m. - 7 p.m.

## What to expect:

- Short-term traffic lane and sidewalk closures
- To minimize impact and ensure one sidewalk is always open, the installations will occur at separate times.
- Radial Boom Derrick (RBD) trucks and other support equipment



RBD truck arm supporting pole

# Sewer Relining on Strange Street

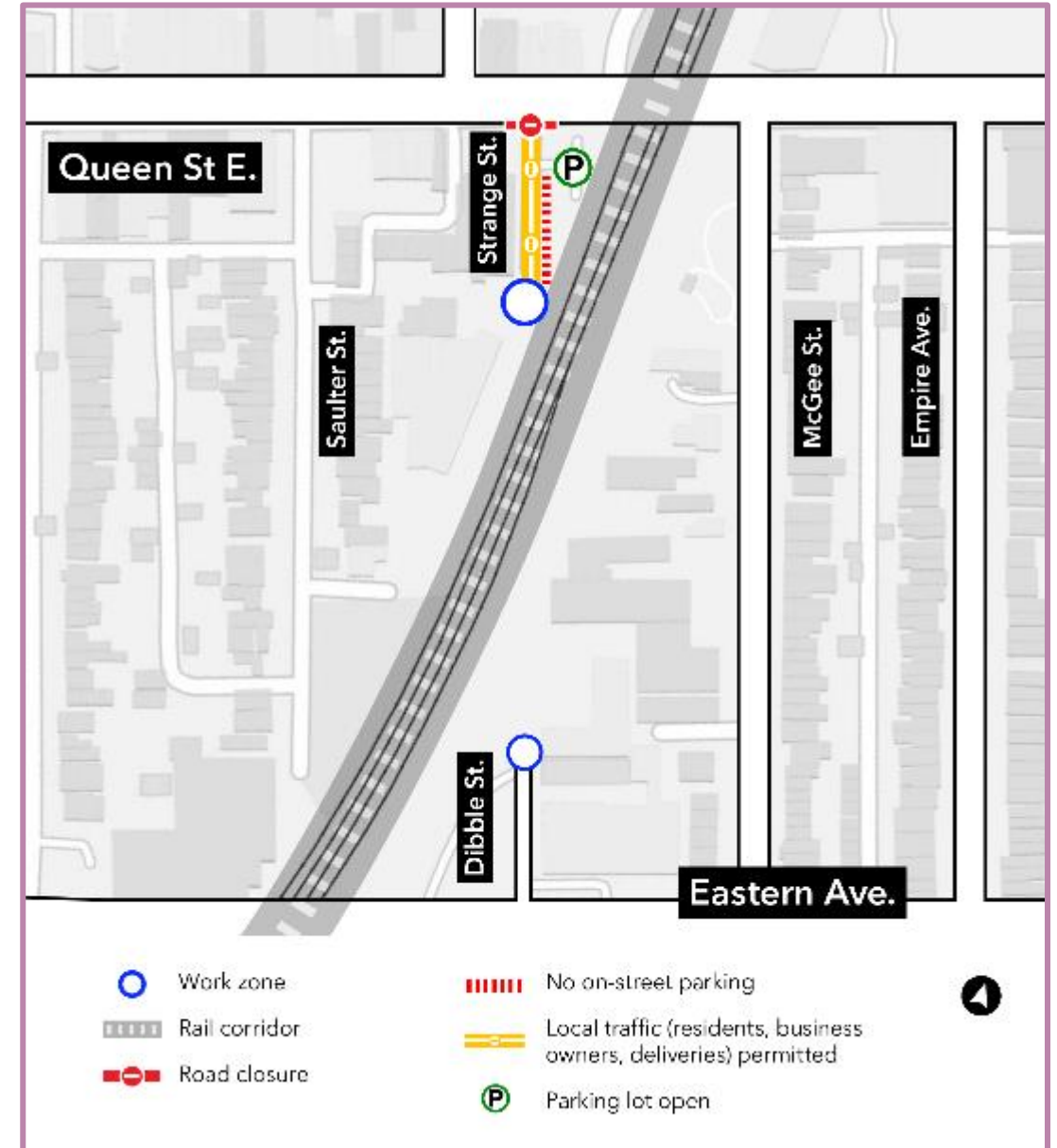
- The sewer that runs beneath the rail corridor between Strange St. and Dibble St. needs to be reinforced to enable transit upgrades within the Lakeshore East rail corridor.
- The cured in place pipe (CIPP) process will be used to install a liner into the sewer to increase the sewer's durability.

## Hours of work:

- Starting late November 2023 for approximately one week
- Monday - Friday, between 7 a.m. - 7 p.m.

## What to expect:

- Strange St. will be temporarily closed at Queen St. E. Road access for local residents and businesses will be maintained.
- There will be a small work zone at the north end of Dibble St.
- Smell from cured in place pipe (CIPP) process. This process rehabilitates sewer pipes without excavating the road. While the smell may be unpleasant, it is not harmful.
- Hydro-vacuum truck, compressors, pumps, and other support equipment will be used to complete this work

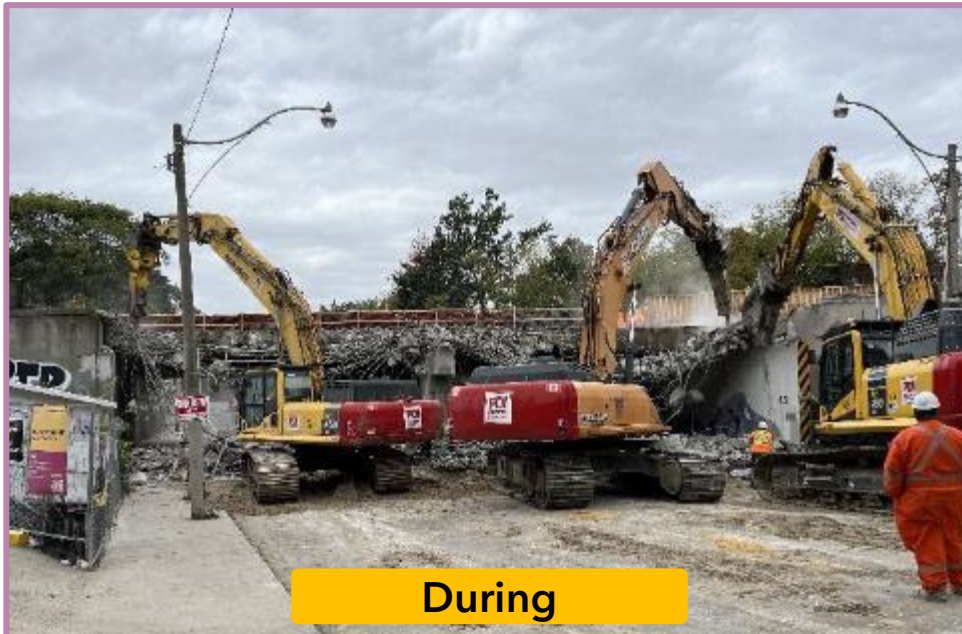




# Dundas Street East Bridge



## Dundas Street East: Completed Bridge Demolition Work





# Dundas Street East Bridge - Ongoing and Upcoming Work

## Excavation and support works (daytime, weekday):

- The soil around the east side of the bridge will be excavated and a wood wall (shoring wall) will be installed to support the other side of the rail corridor. Tiebacks will be drilled into the side of the wall to hold back the excavation.

## Hours of work:

- Ongoing Monday - Friday; 7 a.m. - 7 p.m. , until mid-December

## What to expect:

- No traffic or pedestrian impacts are expected; this work will take place from within the rail corridor.
- Excavators, drill rigs, dump trucks, loaders, and skid steerers will be used to complete this work

## Centre pier construction (daytime, weekday)

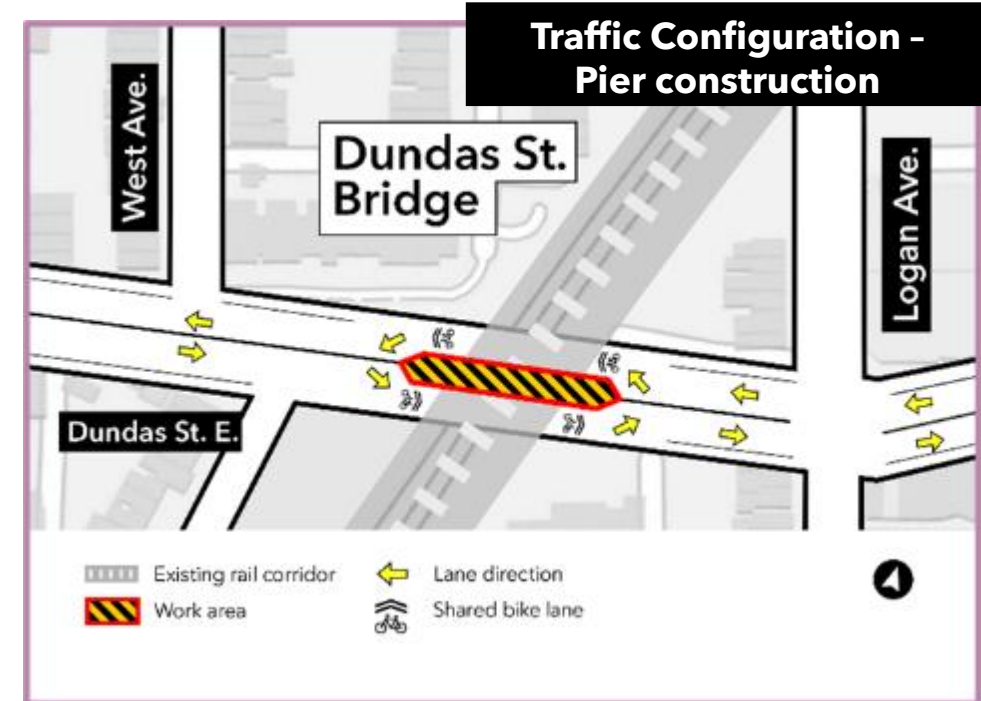
- The existing piers in the centre of the bridge will be removed and new piers will be built.
- Construction activities will include concrete breaking, excavation, and structural works.

## Hours of work:

- Starting Monday November 13, 2023, for approximately one (1) month; traffic staging may be implemented as early as Thursday, November 9, 2023
- Monday - Friday between 7 a.m. - 7 p.m.

## What to expect:

- A work zone will be set up in the middle of Dundas St. E. to safely complete this work.
- The bike lanes on both sides of the street will be closed. Eastbound and westbound cyclists will need to share the road with vehicles while travelling underneath the bridge
- Noise from construction equipment including excavators, trucks, jack hammers, saws and loaders can be expected

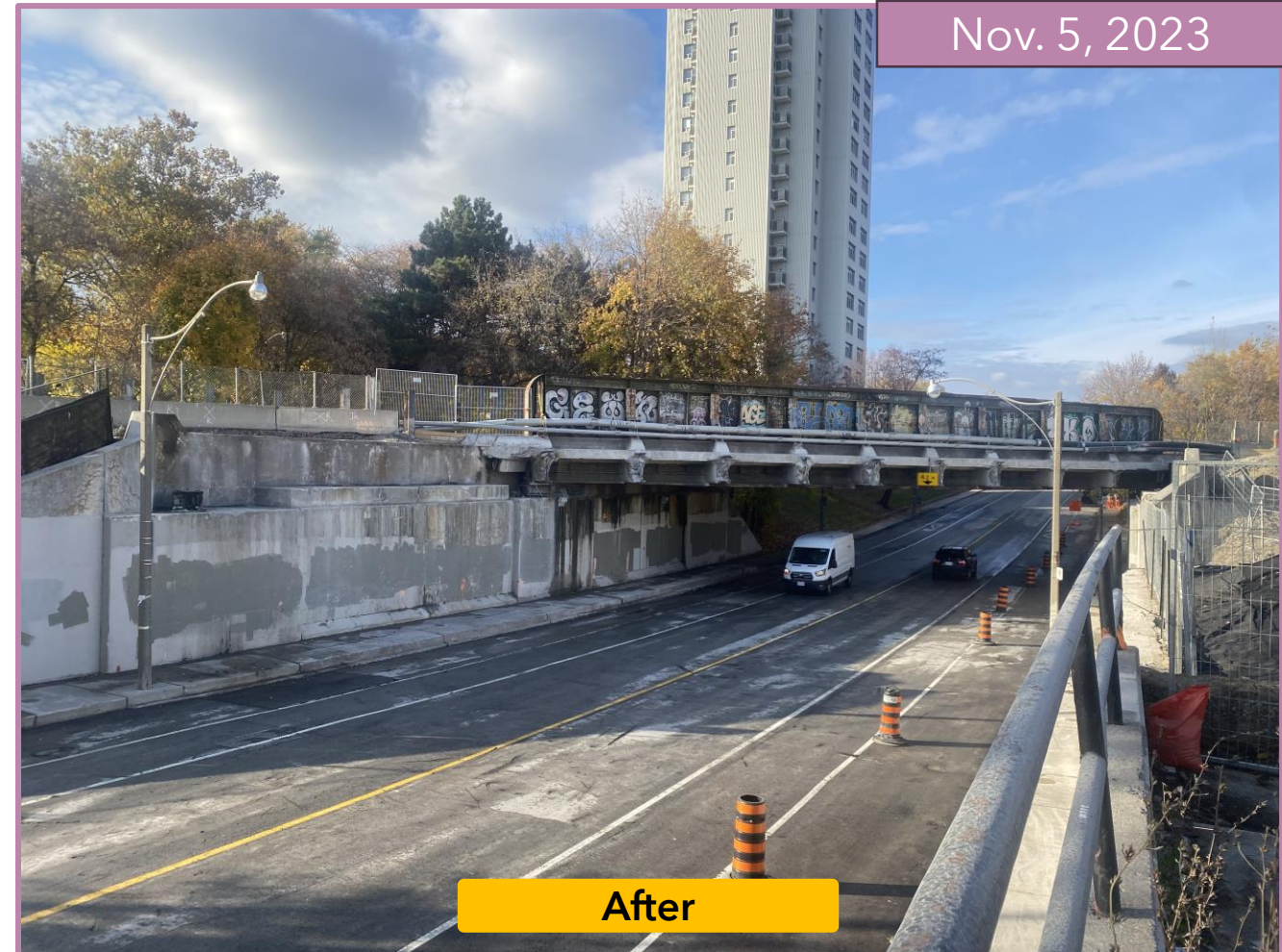
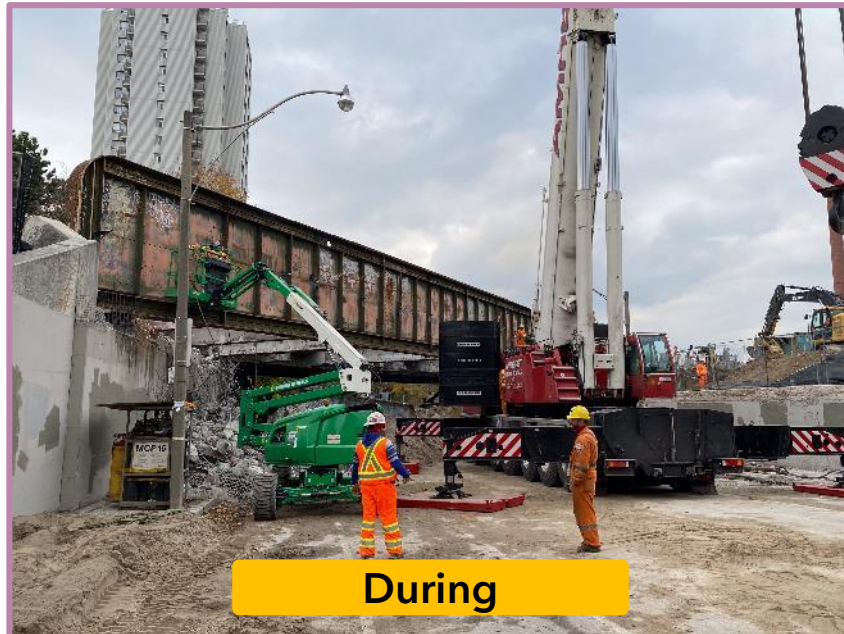






# Logan Avenue Bridge

# Logan Avenue Bridge: Completed Bridge Demolition Work





# Logan Avenue Bridge - Ongoing and Upcoming Work

## Support works (daytime, weekday):

- Crews continue to prepare the rail corridor for excavation by installing a shoring wall that will support the other side of the rail corridor. Tiebacks will be drilled into the side of the wall to hold back the excavation.

## Hours of work:

- Ongoing Monday - Friday; 7 a.m. - 7 p.m. , until mid-December

## What to expect:

- No traffic or pedestrian impacts are expected; this work will take place from within the rail corridor.
- Excavators, drill rigs, dump trucks, loaders, and skid steerers will be used to complete this work

## Pier construction (daytime, weekday)

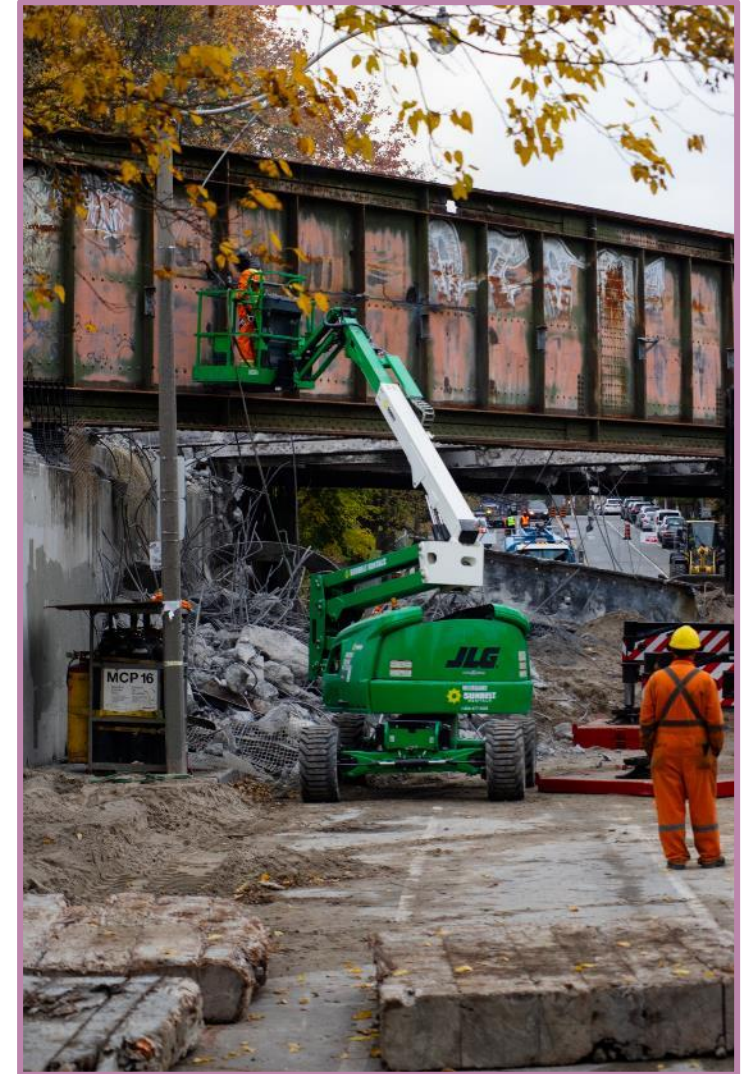
- A work zone will be installed in the centre of the road to build the new piers for the bridge.
- Construction activities will include excavation, drilling, and concrete works.

## Hours of work:

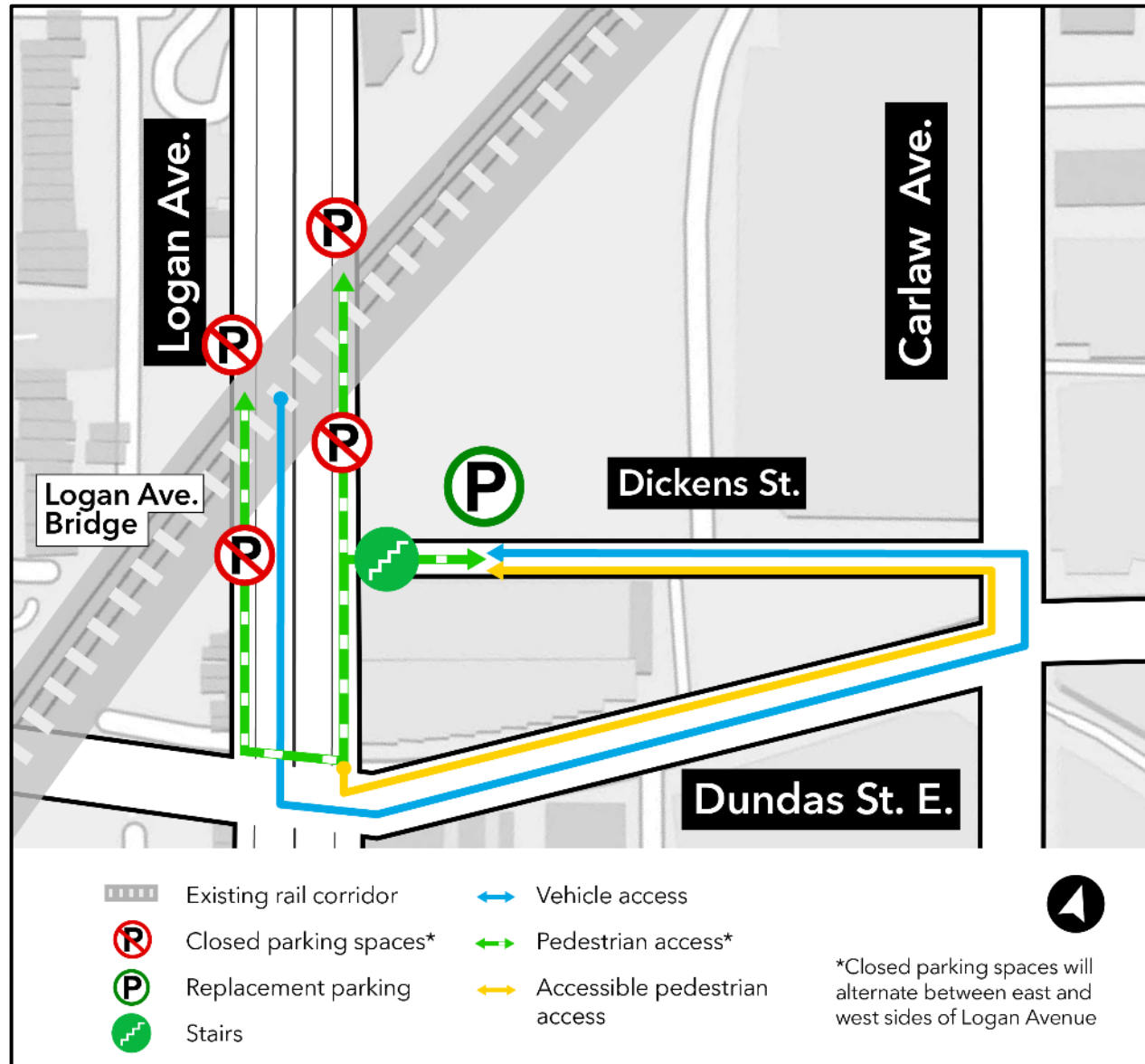
- Starting in early December for approximately three months
- Monday to Friday, between 7 a.m. - 7 p.m.

## What to expect:

- Noise from construction equipment including excavators, trucks, drills, generators, and concrete trucks can be expected
- Traffic lane reductions and alternating sidewalk closures on Logan Ave.
- Removal of street parking adjacent to the Logan Ave. bridge



## Replacement Parking - 10 Dickens St.



- Approximately twenty new parking spaces have been constructed on Dickens St. to offset displaced street parking on Logan Ave.
- These parking spaces will be free for a maximum three-hour limit (same regulations as street parking on Logan Ave.)
- The parking spaces are currently available to the public and will remain open throughout construction
- Utility work on Logan Ave. is underway. Street parking adjacent to the Logan Ave. bridge will be removed to complete this work.

# Sewer Installation on Logan Avenue

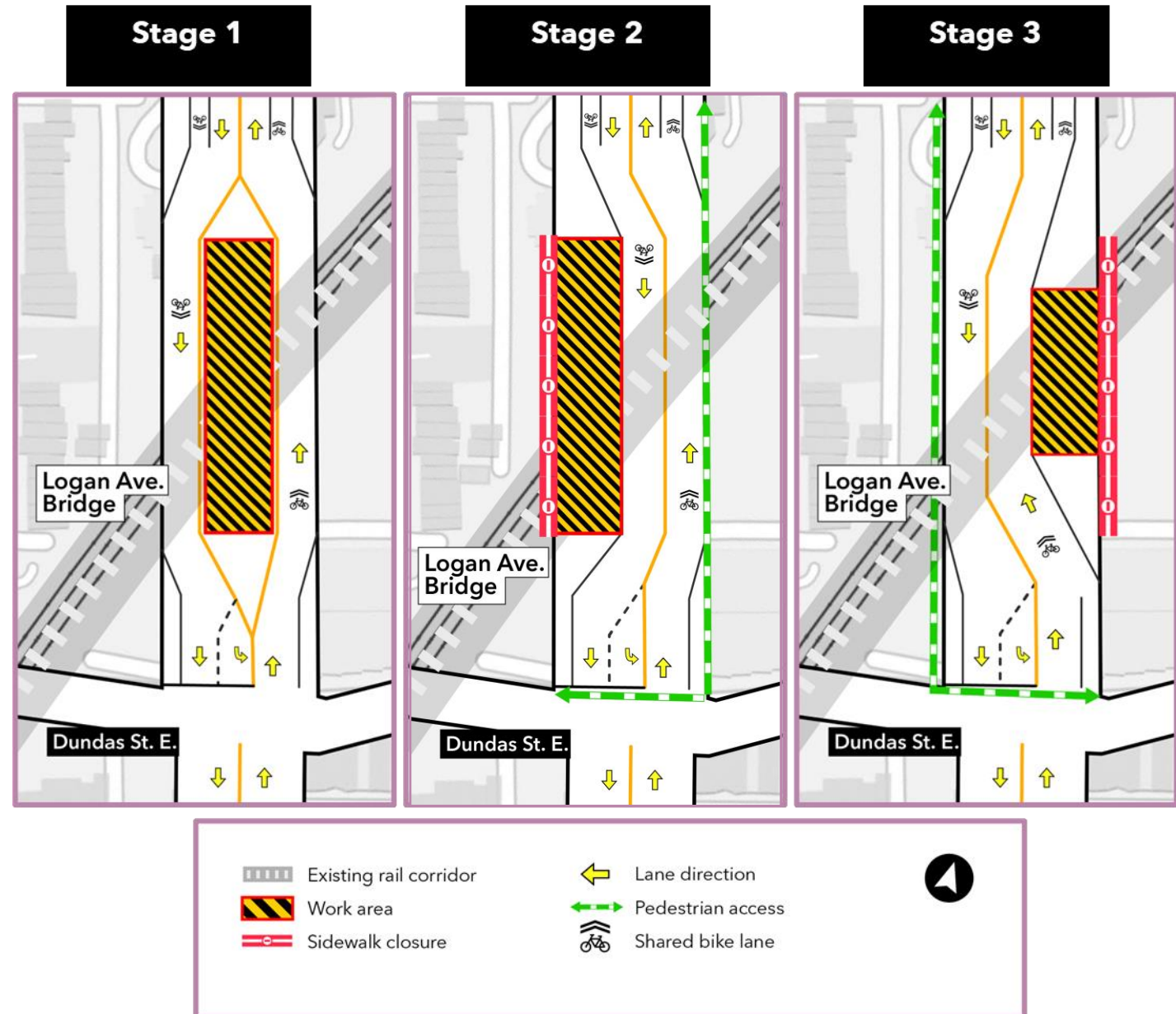
- Crews will install a new sewer beneath the Logan Ave. bridge.
- To minimize traffic impacts, this work will be done in multiple stages.

## Hours of work:

- Starting late November, 2023 for approximately one month
- Monday - Friday, between 7 a.m. - 7 p.m.

## What to expect:

- The bike lanes on the east and west sides of Logan Ave. will be closed during this work.
- Street parking on Logan Ave. will be restricted between Dundas St. E. up to 444 Logan Ave. Replacement parking will be available at 10 Dickens St.
- Alternating sidewalk closures on the east and west sides of Logan Ave. under the rail bridge. One sidewalk will remain open at all times. Pedestrians will be directed to use the existing crosswalks at Dundas St. E. and First Ave.
- Traffic lanes will shift to the east and west sides of the street as work progresses from one end of the bridge to the other.
- Hydro-vacuum truck, excavators, loaders, rollers, generators, pumps, and delivery trucks will be used to complete this work





## Jimmie Simpson Park Retaining Wall Removal & Barrier/Fence Installation

- On Friday, November 10, 2023, retaining wall removal adjacent to the Jimmie Simpson Park playground will begin
- Prior to the demolition work, a 3 metre high temporary barrier will be placed in front of the existing retaining wall to protect the Park and ensure the safety of the Park users
- The temporary barrier will have a concrete base with chain link fence installed on top

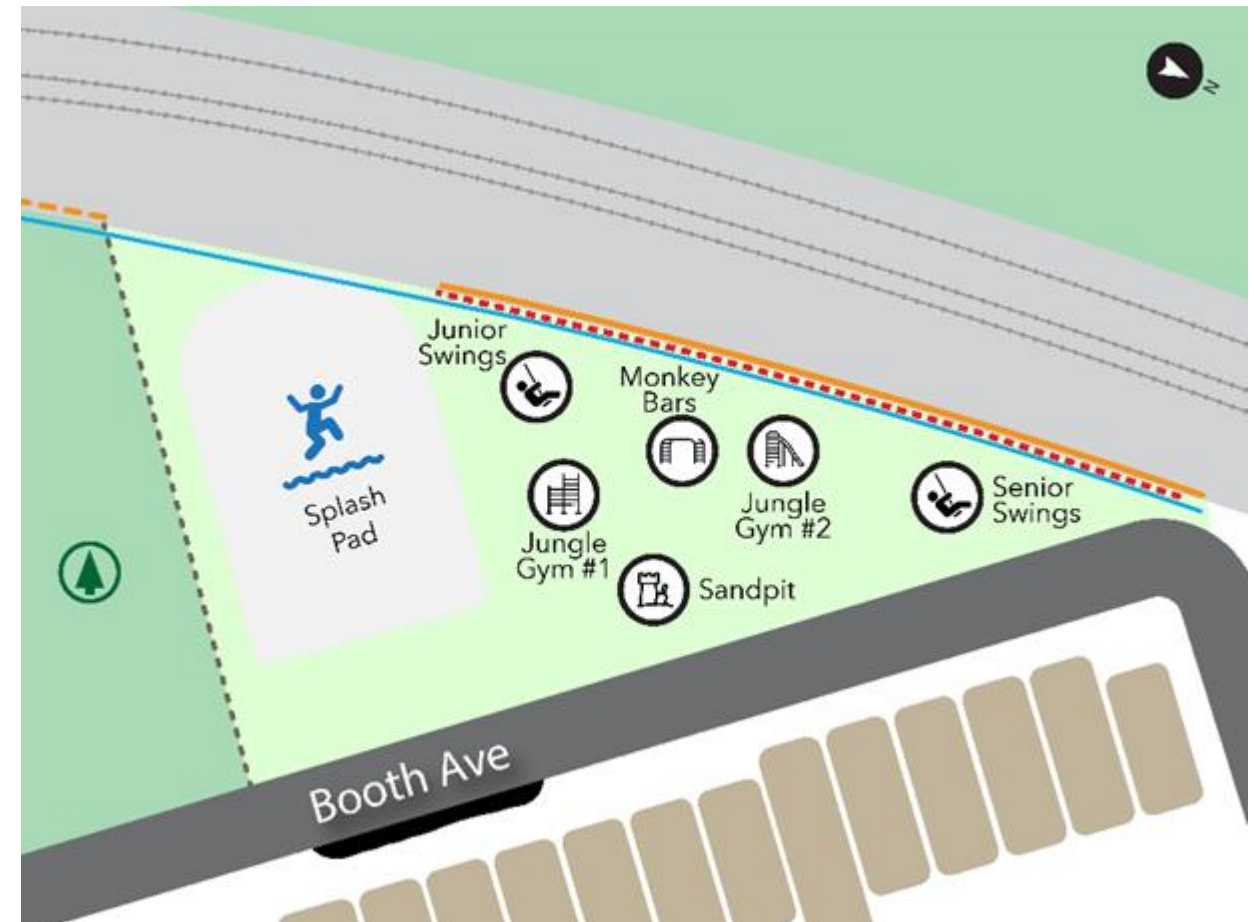
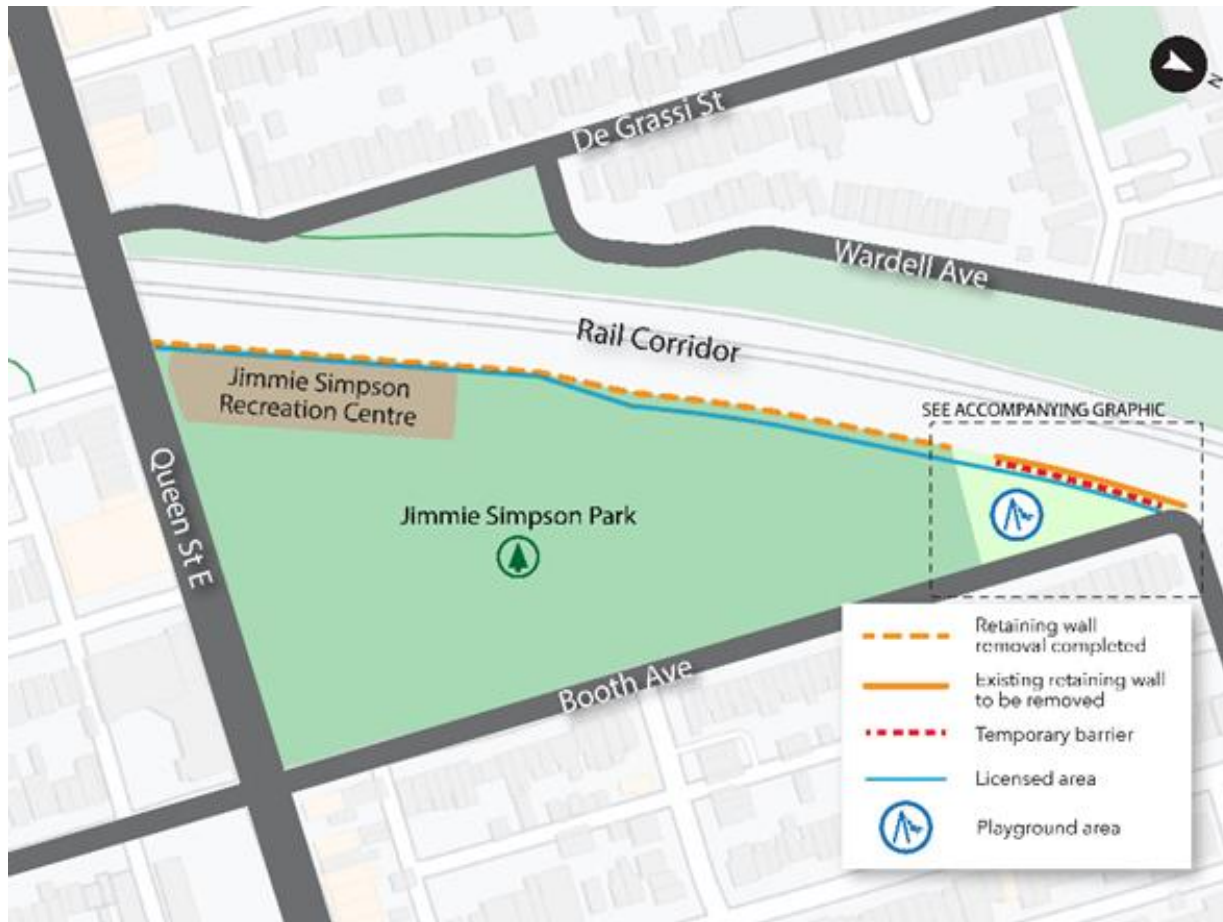
### Tentative work schedule:

Hours of Work	Activity
<b>Fri Nov 10, day and night work</b> 7 a.m. – 5 p.m. and 7 p.m. – 5 a.m.	<ul style="list-style-type: none"> <li>• Place temporary construction fence</li> <li>• Place concrete barriers</li> </ul>
<b>Sat Nov 11, day work (contingency)</b> 7 a.m. – 5 p.m.	<ul style="list-style-type: none"> <li>• Place concrete barriers</li> </ul>
<b>Mon Nov 13 – Wed Nov 15, day work</b> 7 a.m. – 5 p.m.	<ul style="list-style-type: none"> <li>• Install chain link fence on top of concrete barriers</li> </ul>
<b>Thurs Nov 16 – Fri Nov 17, day and night work</b> 7 a.m. – 5 p.m. and 12:01 a.m. – 5:30 a.m.	<ul style="list-style-type: none"> <li>• Demolish the existing retaining wall using a saw cutter and excavator</li> <li>• For safety, the section of retaining wall behind the junior swings must take place at night when the park is closed</li> </ul>

- Once the existing retaining wall is removed, construction of the new retaining wall and noise barrier will start
- Tree protection is currently in place throughout the Park; no trees will be removed during this work
- Once the new retaining wall is built, there will be up to three meters of additional park space available
- A Metrolinx representative (safety or construction) will be onsite throughout the demolition work
- If there is a suitable place for art at this location, Metrolinx will work with local residents to ensure community input is reflected.



# Jimmie Simpson Park Retaining Wall Removal & Barrier/Fence Installation





**Eastern Avenue Bridge  
East Harbour Transit Hub**

# EAST HARBOUR TRANSIT HUB

## EARLY WORKS AND EASTERN AVENUE BRIDGE WORK

- Advanced preparations continue in anticipation of the start of construction in mid-2024\*.
- Early Works may include such things as: establishing the work zone, moving equipment, supplies, and other resources, geo-technical investigations, utility daylighting, and track work.
- Early works are an important component of any construction project. These activities set the groundwork for major construction and reduce the risk of delays to the project.
- With the ongoing demolition and reconstruction of the Eastern Avenue Bridge, a series of lane closures on Eastern Avenue, will be in effect starting mid-October 2023 until October 2026\*, to create a safe working zone for the crews and vehicle traffic.

- Dates are subject to change

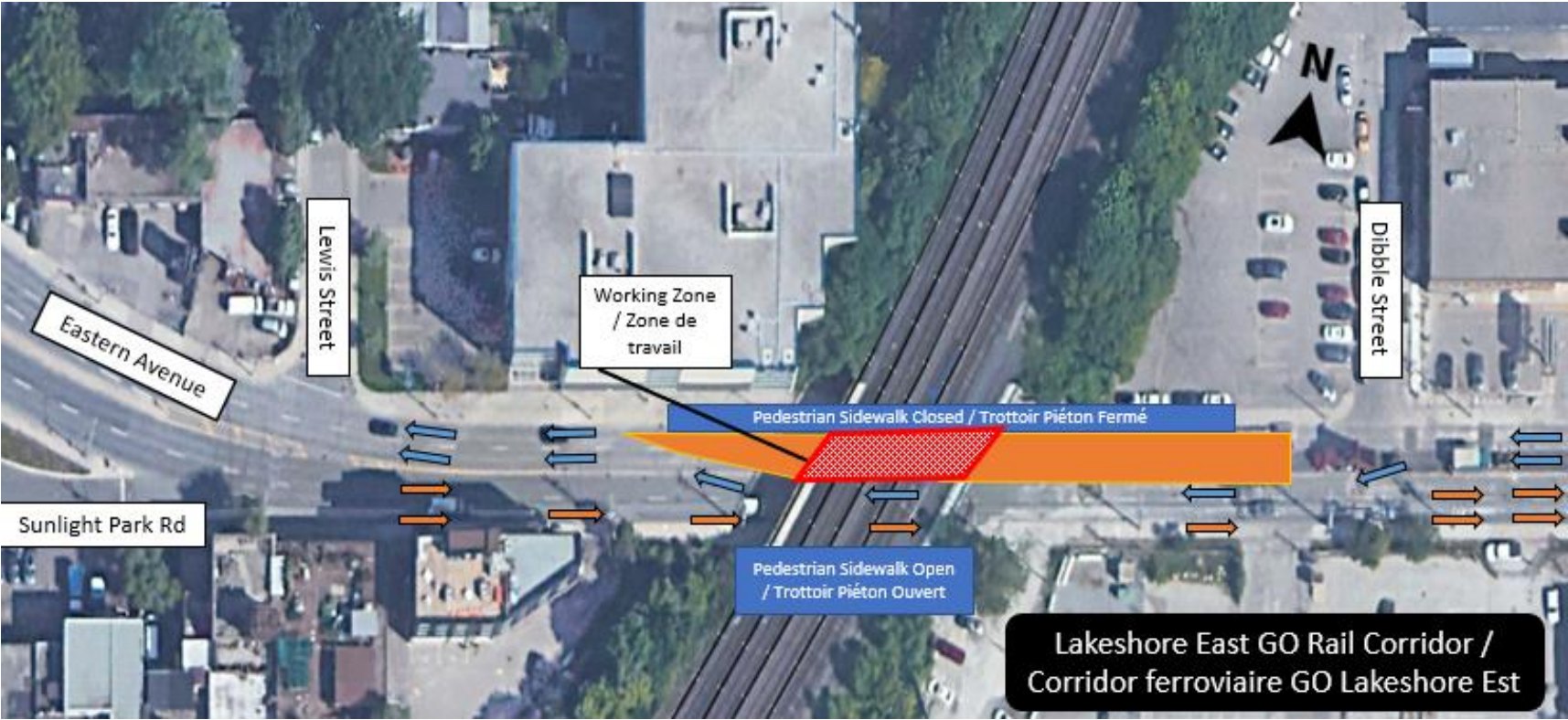
# EAST HARBOUR TRANSIT HUB

## UPCOMING CONSTRUCTION ACTIVITIES

Construction Activity	Traffic Impact	Start Date	End Date	Associated Map
North abutment wall & intermediate column demolition & backfill, ramp installation	Traffic on Eastern Avenue between Dibble Street and Lewis Street will be reduced to a single lane in each direction with North sidewalk closed. The South sidewalk will remain open.	October 30, 2023	November 17, 2023	Figure 1
South abutment wall & intermediate column demolition & backfill, ramp installation	Traffic on Eastern Avenue between Dibble Street and Lewis Street will be reduced to a single lane in each direction with South sidewalk closed. The North sidewalk will remain open	November 17, 2023	December 13, 2023	Figure 2
Reconstruction of Eastern Avenue Bridge (Eastern side)	Traffic on Eastern Avenue between Dibble Street and Lewis Street will be reduced to a single lane in each direction with both sidewalks open. North and South side curb lanes closed.	December 13, 2023	October 30, 2026	Figure 3

# EAST HARBOUR TRANSIT HUB

FIGURE 1 – MAP SHOWING TWO WESTBOUND LANES AND SIDEWALK CLOSURE





# EAST HARBOUR TRANSIT HUB

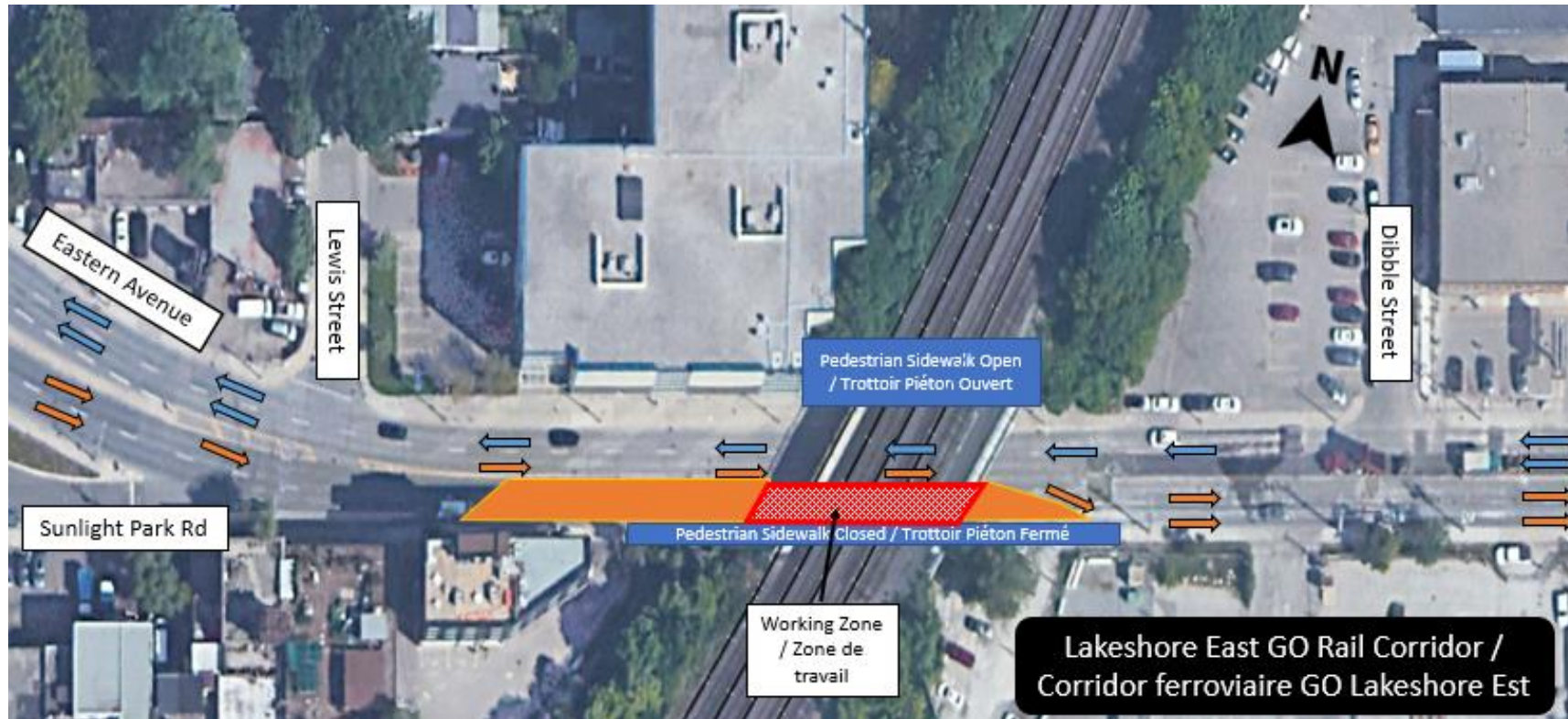
MAP SHOWING SIDEWALK ACCESS





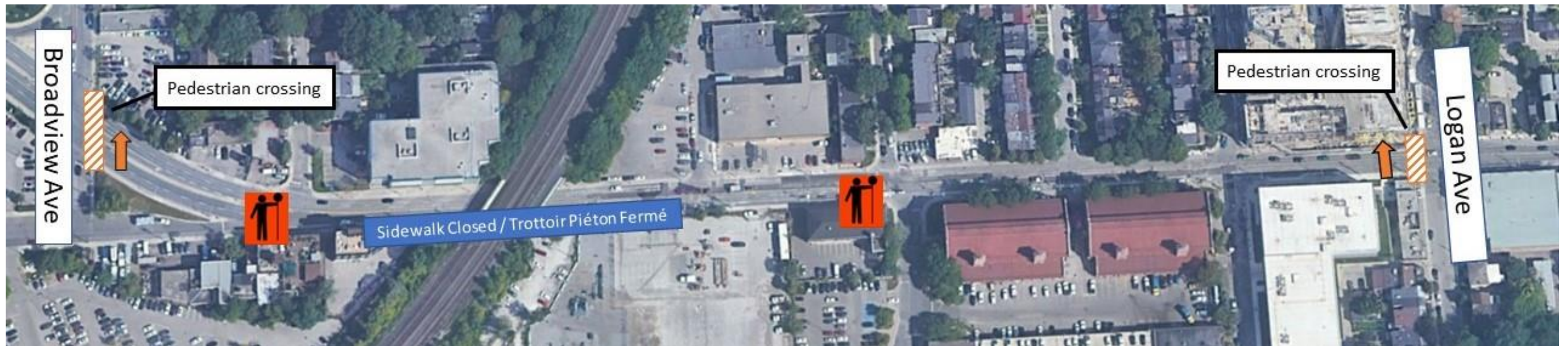
# EAST HARBOUR TRANSIT HUB

FIGURE 2 – MAP SHOWING TWO EASTBOUND LANES AND SIDEWALK CLOSURE



# EAST HARBOUR TRANSIT HUB

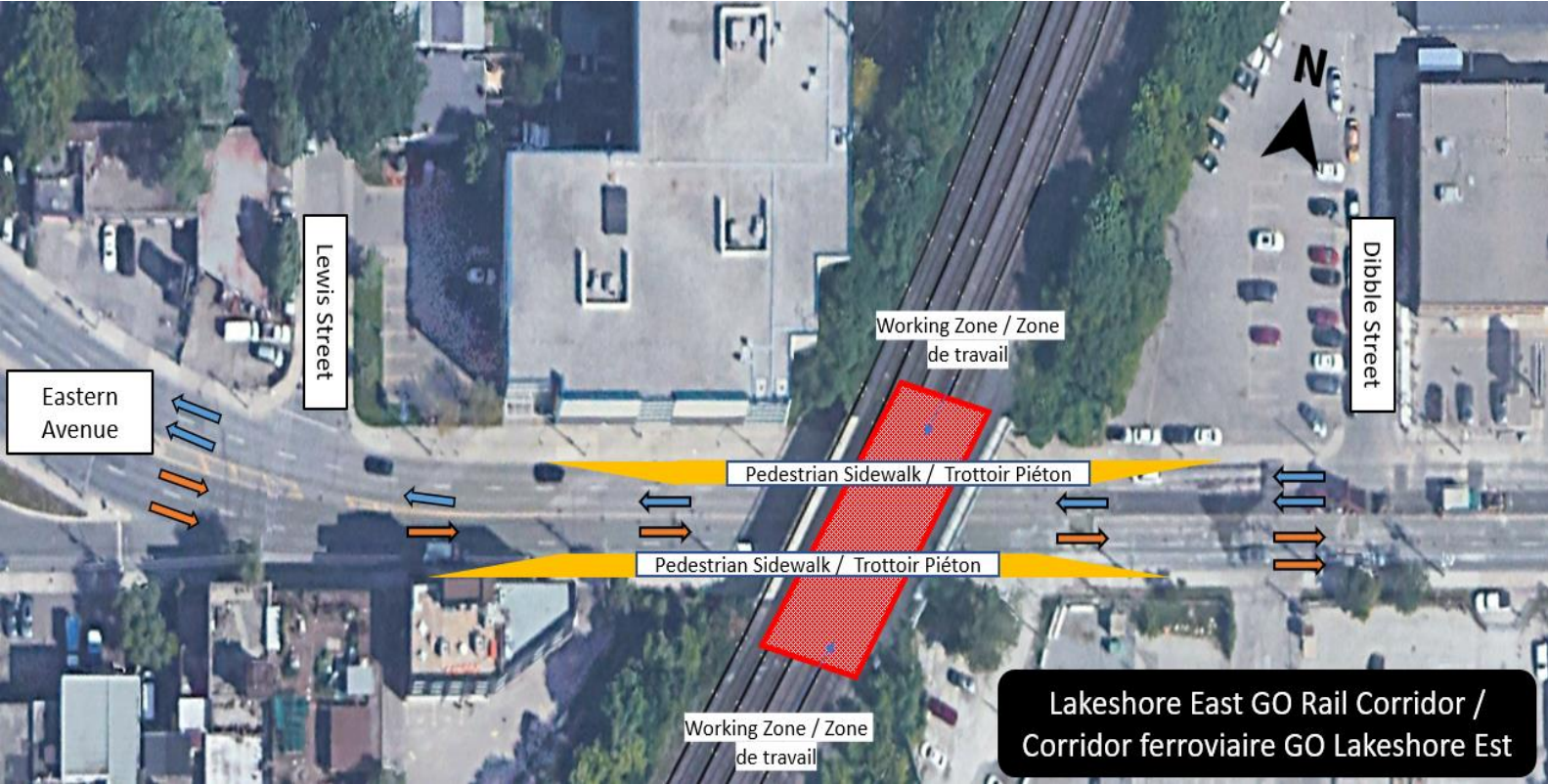
MAP SHOWING SIDEWALK ACCESS





# EAST HARBOUR TRANSIT HUB

FIGURE 3 – MAP SHOWING LONG-TERM CURB LANE CLOSURE AND SIDEWALK ACCESS



# What's Next and Wrap Up

# Community Engagement

**Metrolinx along with construction and project representatives are here for the community throughout the project. Engagement activities include:**

- Pop-ups across the community (parks, events, markets)
- Pop-ups in building lobbies
- In-person and virtual meetings with residences and businesses
- Site tours/walks
- 'Shop Here' digital campaigns, supporting communities impacted by Ontario Line Construction
- News, progress and information shared in the Ontario Line newsletter (currently over 6,600 subscribers)

**Follow us on social media:**

X / Facebook / Instagram @ OntarioLine



Ontario Line Design Competition July 2022, Jimmie Simpson Park



# Contact Us

**Metrolinx will keep the community, residents and businesses informed by providing project updates, seeking input and feedback, and addressing questions and concerns effectively and quickly.**

## Stay connected:

Ontario Line e-newsletter @ [Metrolinx.com/OntarioLine](https://www.metrolinx.com/OntarioLine)

## Questions or comments:

[OntarioLine@metrolinx.com](mailto:OntarioLine@metrolinx.com)

24/7 call # 416-202-5100

## Follow us on social media:

Twitter / Facebook / Instagram @ OntarioLine



Ontario Line Community Office 770 Queen Street East



# Questions and Answers

# Appendix



# Construction Mitigation



## Noise Barriers

Where possible, temporary barriers surround loud equipment to reduce noise.



## Advance Notice

Providing notice ahead of construction to give local stakeholders the opportunity to ask questions and plan for the work.



## Site Maintenance

Keeping the site clean and tidy to support the positive appearance of the neighbourhood.



## Noise Monitors

Located throughout the rail corridor, these monitors measure noise to make sure proper levels are maintained.



## Hoarding and Signage

Hoarding provides a protective barrier between the construction site and the public. Signage informs of ongoing and upcoming work, as well as way-finding.



## 24-Hour Support

Providing a 24-hour call number to address complaints and issues.



## Mindful Work Schedules

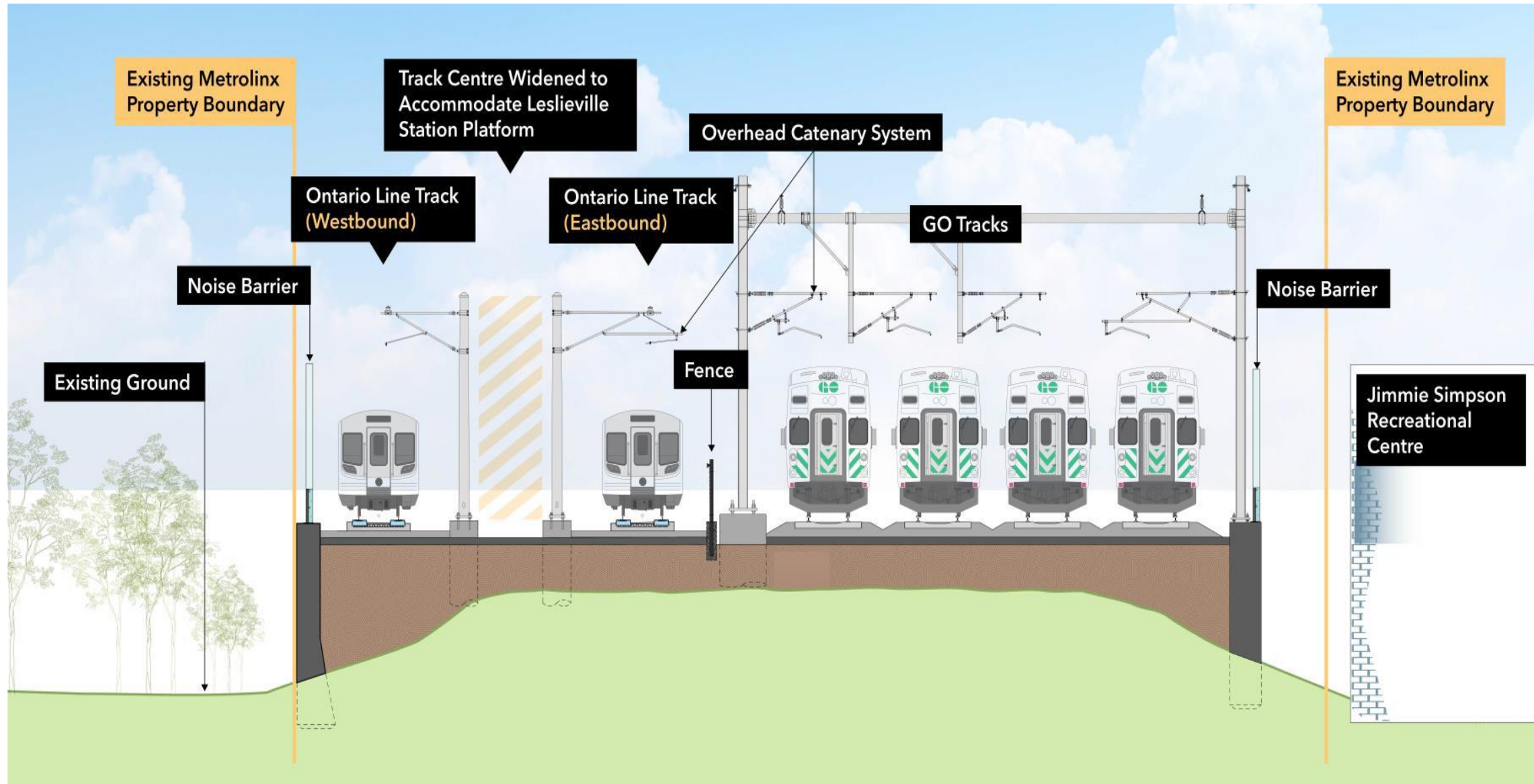
Work is scheduled to consider community needs, other major projects, and neighbourhood events.



## Good Neighbor Approach

Making sure project staff are considerate of the community during construction.

# Summary of Lakeshore East Joint Corridor Early Works



## Construction Liaison Committees (CLC)

Construction Liaison Committees (CLCs) provide open, two-way communication and sharing of information before and during the construction of the Ontario Line project. The CLC will focus on the impacts, issues and areas of concern for resolution related to the Ontario Line construction within the Leslieville/Riverside neighbourhoods. The full Terms of Reference will be shared with the CLC via email.

- The CLC will meet regularly as construction activities get underway
- CLC frequency is flexible, depending on schedules/availability and critical construction work
- Metrolinx will work with stakeholders to develop meeting agendas
- Meetings will last 60-90 minutes, depending on the agenda
- Metrolinx to chair the CLC with support from the project contractor
- Project contractor will participate and lead the construction updates
- Action items/issues/complaints to be logged for resolution

### Construction Liaison Committee (CLC)

#### Community representatives



- Elected officials
- Community groups/residents
- Residents' groups/associations
- Tenant representatives
- BIAs
- Business owners

#### City of Toronto



#### Project team members



- Metrolinx—representatives from Subways Sponsors Office, Design Division, Community Engagement, Project Teams and Contractor/Project Co.

## Who Does What?



A division of CRH Canada Group Inc.

Responsible for construction delivery, establishing the construction schedule, determining construction plans and the care and control of construction sites.



Contribute subject matter expertise regarding City polices, requirements, permits and procedures.

Ensure key City and community interests are noted and addressed through application design reviews and permits.

Work with partners to minimize negative impacts on residents and the environment.

Monitor construction sites for safety and adherence to City standards and bylaws.



Overarching accountability for entire project, strategy and content approvals, building relationships and understanding needs of the community.

Oversight of construction contractors to ensure compliance with contractual obligations, including work schedules, adherence to acceptable noise levels, traffic management plans and permit conditions.



# Construction Liaison Committee Members



## Community Members

- Riverside BIA
- Leslieville BIA
- WoodGreen Community Services
- Lakeshore East Community Advisory Committee
  - Shelley Kline
  - Tony Whitaker
- Rosemary Waterston (resident)
- Catherine Riddell (resident)
- Stephen Davies (resident)
- Fontbonne Ministries
- Saulter Street Brewery
- Bonjour Brioche Bakery
- Tabule Restaurant
- Jimmie Simpson Recreation Centre (City of Toronto)

## Elected Officials (or designate)

- MP Julie Dabrusin
- MPP Peter Tabuns
- Councillor Paula Fletcher



- Transit Expansion Division
- Parks, Forestry and Recreation
- Transportation Services



- Ontario Line Community Engagement
  - Mark Clancy
  - Katiana Moussa
  - Louis Vatr
- Dufferin Construction
- Project Sponsor
- Capital Projects Group
- Traffic and Transportation
- Other project teams as required

# Impact Levels

## Major Impact



***Includes:***

- Major intersection work
- Overnight work
- Transit impacts
- Road closures
- Public parking displacement

## Medium Impact



***Includes:***

- Paving
- Long term traffic lane closures
- Work affecting access to private driveways

## Minor Impact



***Includes:***

- Short-term traffic lane closures
- Temporary pedestrian detours

# Summary of Lakeshore East Joint Corridor Early Works



## Lakeshore East Joint Corridor Early Works Scope of Work Summary



Future station



Utility relocations along Queen Street, Dundas Street, Logan Avenue and the surrounding side streets.



Upgrade to the rail corridor, including excavation of the existing embankment, installation of new drainage infrastructure, installation of pre-cast concrete retaining walls and backfill of the corridor.



Removal of existing and construction of new GO Bridges at Queen Street East, Dundas Street East and Logan Avenue. Construction of two new Ontario Line bridges at Dundas and Logan.



Realignment of the existing GO tracks, construction of a fourth GO track, and preparation works for eastbound and westbound Ontario Line tracks.



Construction of noise barrier walls to mitigate the impact of the railway on adjacent properties.



Construction of retaining walls for construction of the future Ontario Line stations: Riverdale-Leslieville station and Gerrard station.

# Overview | Bridges Redevelopment

