

Capital Projects Progress: GO & UP

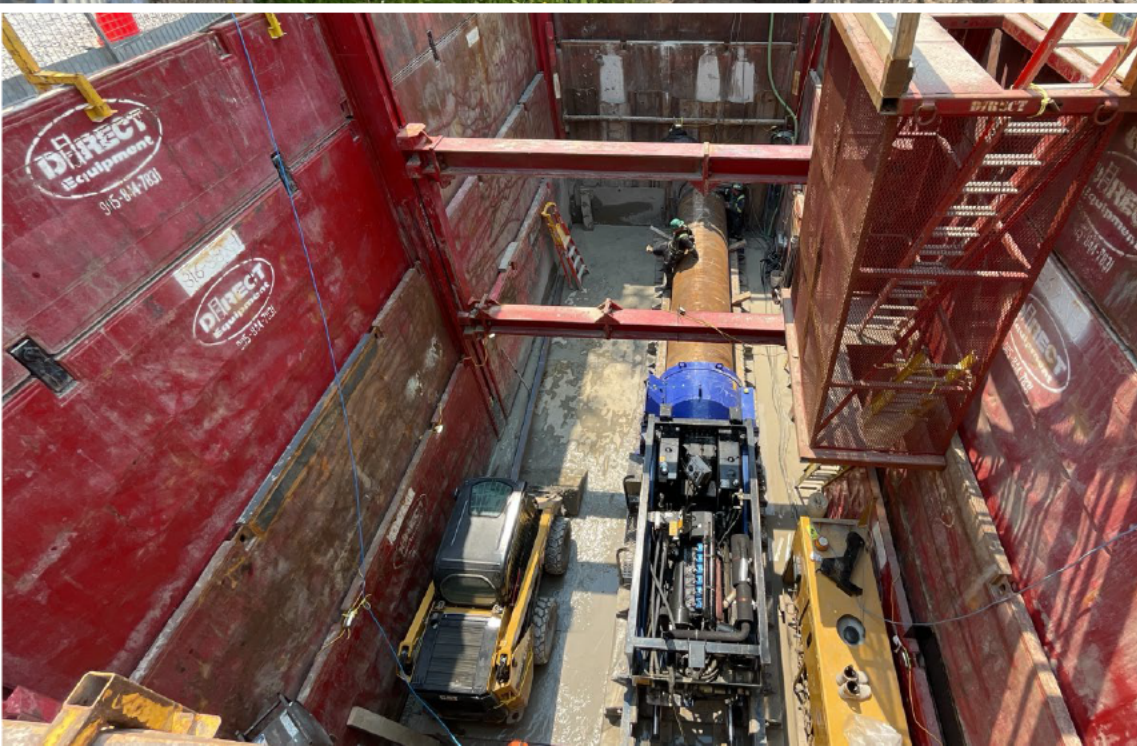
November 30, 2023

Stephanie Davies
Chief Capital Officer (GO & UP)

UNION STATION ENHANCEMENT PROJECT

Excavation is nearing final depth for the future south concourse. New truck tunnel roof now installed as part of work to maintain loading access.





FINCH-KENNEDY GO STATION

Hydro, gas, and communications utilities relocated in advance of station and grade separation construction.



EGLINTON GO STATION

Platform rehabilitation completed over four weekends using existing track closures.





OLD ELM GO STATION

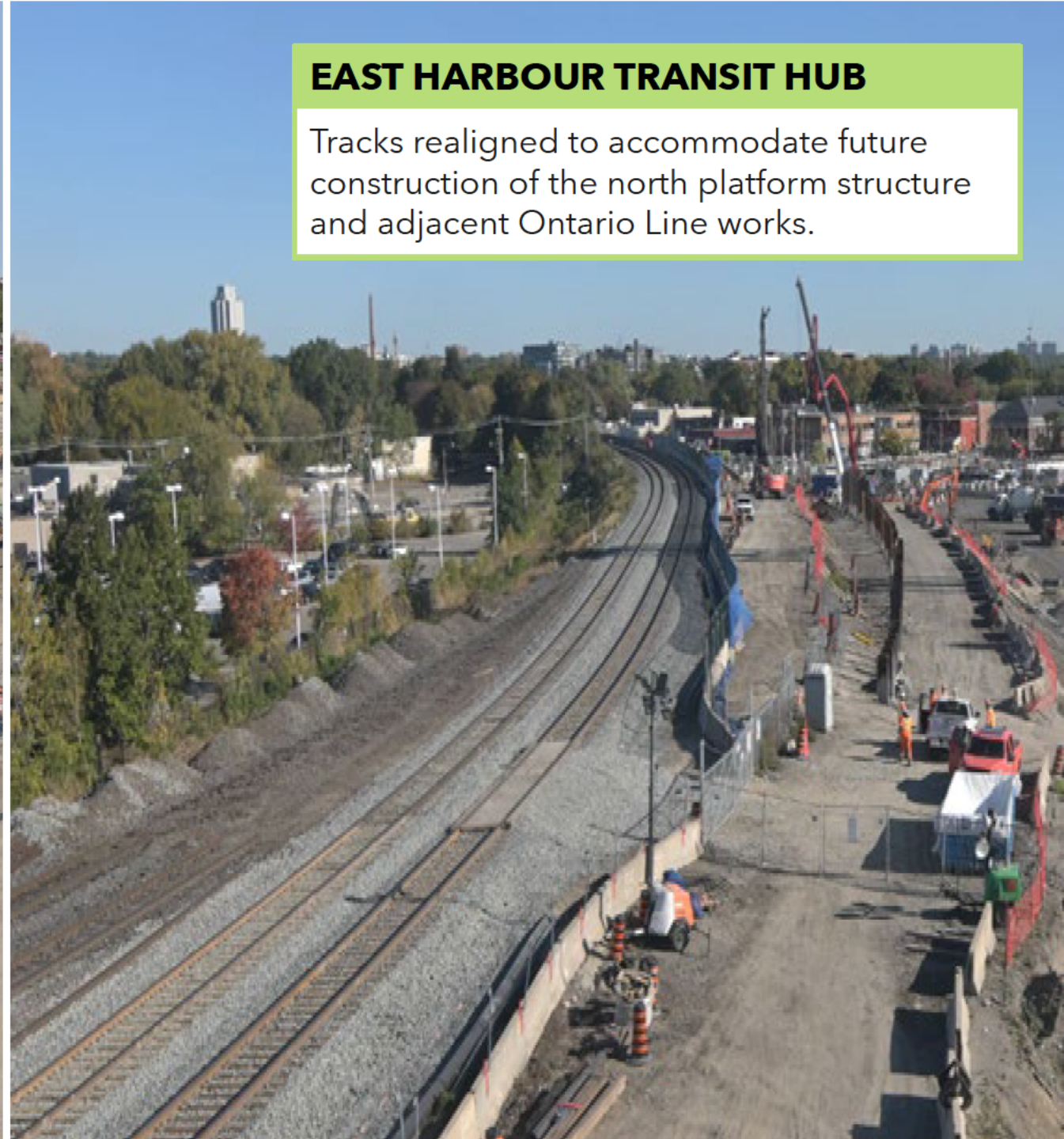
New and improved Old Elm GO Station is now serving customers.





EAST HARBOUR TRANSIT HUB

Tracks realigned to accommodate future construction of the north platform structure and adjacent Ontario Line works.



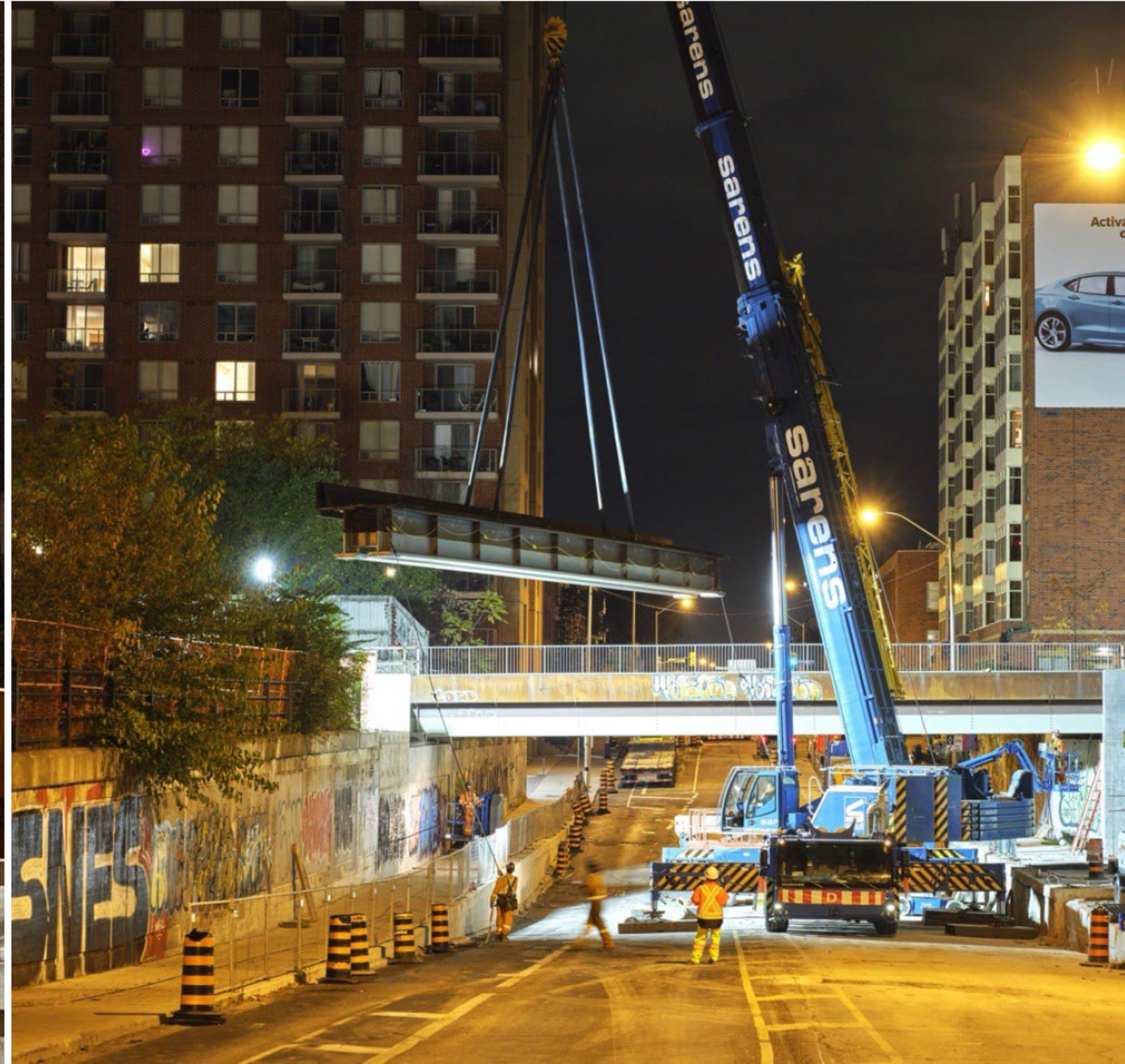
BARRIE DOUBLE TRACK ENABLING WORKS

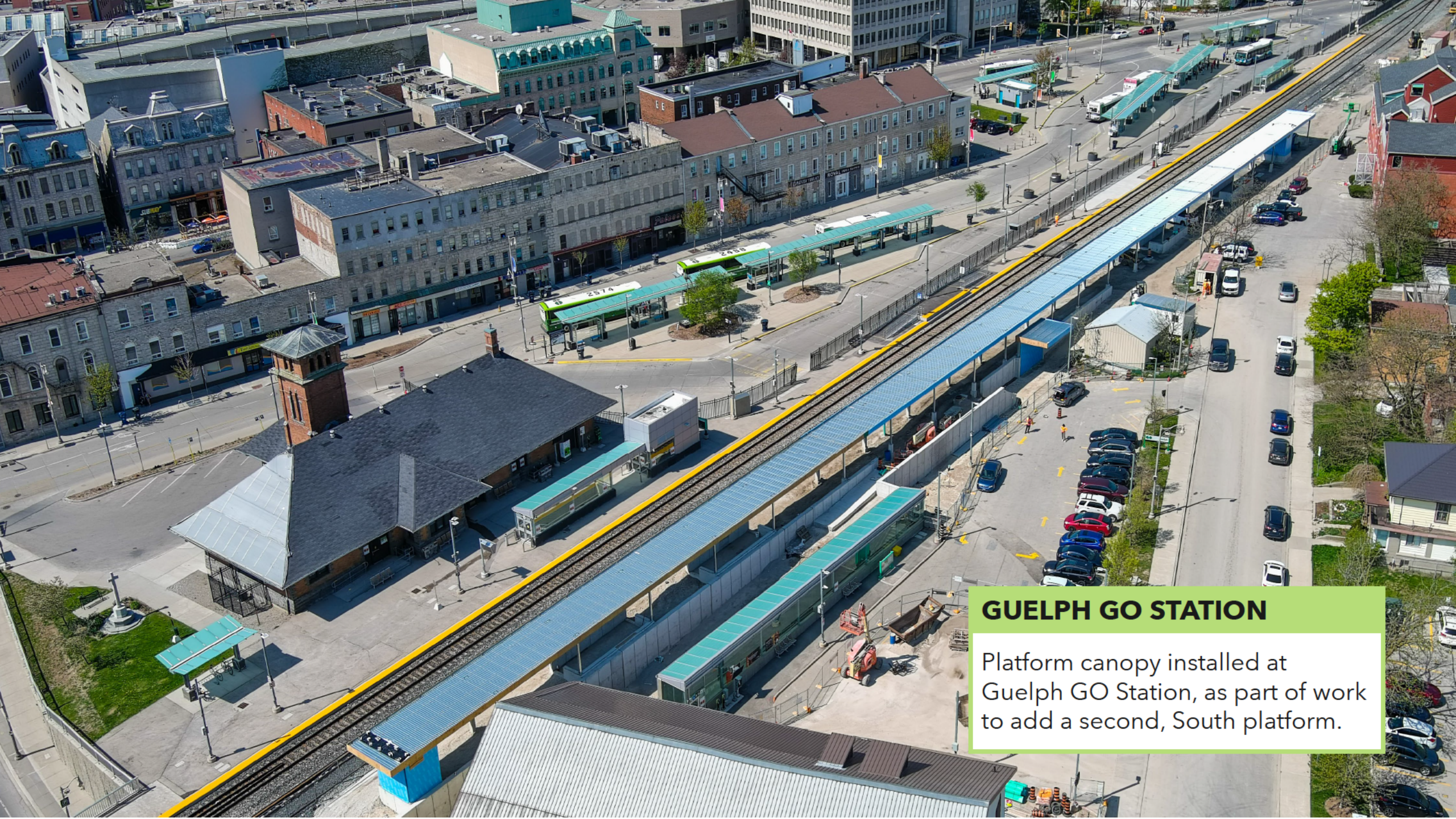
Concrete poured for the final Sheppard Avenue bridge pier. Widened bridge will accommodate the future West platform at Downsview Park GO Station.



DAVENPORT DIAMOND GRADE SEPARATION

East span of new Bloor Bridge that will carry future second track was installed over five nights.





GUELPH GO STATION
Platform canopy installed at Guelph GO Station, as part of work to add a second, South platform.

