

Corktown Construction Liaison Committee

November 23, 2023



AGENDA

Welcome (5 minutes)

- Introductions
- Land Acknowledgement
- Safety Moment
- **Presentation (25 minutes)**
- Action Items
- Interpretation & Commemoration Plan Update
- Archaeological Update
- Construction Update
- Don Yard Update
- Community Engagement

Feedback and Discussion (30 minutes)



LAND ACKNOWLEDGMENT

Let us take a moment to acknowledge we are on lands that have been, and continue to be, home to many Indigenous Peoples including the Anishnabeg, the Haudenosaunee and the Huron-Wendat peoples.

We are all Treaty people. Many of us have come here as settlers, as immigrants or involuntarily as part of the trans-Atlantic slave trade, in this generation, or generations past.

We acknowledge the historic and continued impacts of colonization and the need to work towards meaningful reconciliation with the original caretakers of this land.

We acknowledge that Metrolinx operates on territories and lands covered by many treaties that affirm and value the rights of Indigenous communities, Nations and Peoples.

We understand the importance of working towards reconciliation with the original caretakers of this land. At Metrolinx, we will conduct business in a manner that is built on a foundation of trust, respect and collaboration.



SAFETY MOMENT

Seasonal Affective Disorder (SAD) Awareness

-What is SAD?

- SAD is a form of depression tied to seasonal changes, often striking during the winter months when daylight is reduced.

Signs:

- Keep an eye out for symptoms like low energy levels, persistent sadness, and disruptions in sleep patterns.

Tips for Coping:

- Prioritize exposure to natural light, especially during daylight hours.
- Engage in regular physical activity to boost mood.
- Maintain a consistent sleep schedule for overall well-being.

Community Support:

- Be mindful of neighbors, especially those who may be more vulnerable. Offer a helping hand or a friendly check-in.



PREVIOUS CLC MINUTES AND ACTION ITEMS

ACTION ITEM	STATUS UPDATE
<ul style="list-style-type: none"> Metrolinx to elevate concern about South land appropriation with leadership. 	<ul style="list-style-type: none"> Metrolinx outlined the updated planned use of land at the October 26 CLC. As plans progressed, Metrolinx required space for tunnel boring machines. Metrolinx has also elevated concern to senior leadership.
<ul style="list-style-type: none"> Metrolinx to follow up on the master plan the St. Lawrence Market Neighbourhood BIA has worked on to improve their streets, sidewalks and cyclist safety. 	<ul style="list-style-type: none"> Metrolinx working with the BIA to coordinate meeting date/time.
<ul style="list-style-type: none"> Metrolinx to follow up on the planter/concrete block underneath the hoarding on the north side of the site to see if it can be removed. 	<ul style="list-style-type: none"> The planter/concrete block will be removed. Exact date is being coordinated. Confirmation pending.

Interpretation and Commemoration Plan - Update

COLLABORATION & CONSULTATION: PUBLIC FEEDBACK RECAP

The Interpretation and Commemoration Plan (ICP) builds on the work and engagement that took place as part of the City of Toronto's First Parliament Site Heritage Interpretation Strategy (HIS) in 2018 & the City of Toronto's Master Plan for the First Parliament Site (2021).

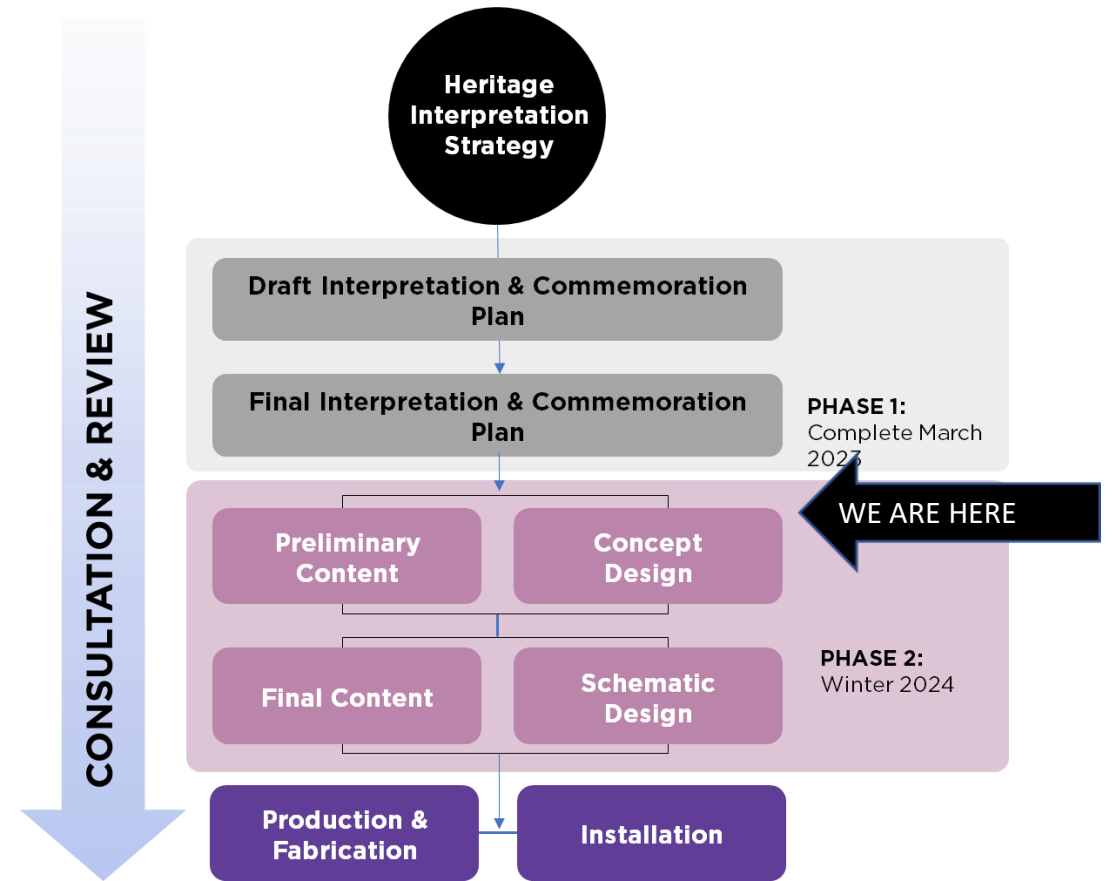
It has further been informed and refined through ongoing consultation on the key themes, as well as cross-cutting themes, including the following activities:

- **Online Survey**

- Opened November 17, 2021 and closed December 17, 2021 via Metrolinx Engage website
- Accompanied by a pre-recorded presentation that walked participants through the key themes identified by the City of Toronto's First Parliament Heritage Interpretation Strategy
- Respondents were asked to rank key themes, as well as cross-cutting themes
- Survey was promoted via social media and at the Ontario Line Virtual Open Houses held on November 23 and 25, 2021. A total of 173 unique respondents participated in the survey

ICP PROGRESS UPDATE

- Currently in Phase II: Content Development
- On-going bi-weekly content development meetings in collaboration with Ontario Heritage Trust
- Monthly meetings with First Parliament Working Group
- Presentation of the ICP and invitation to further participate in the process with several Indigenous Nations and communities
- Content conversations with experts in Archaeology of the Americas at the ROM and in Black Canadian history
- Integration of finds from on-going archaeological work into the ICP content



CORKTOWN STATION RENDERING: INTERIOR INTERPRETATION

The rendering shows a multi-level station interior with a central concourse, stairs, and platform areas. Purple callouts point to specific interpretive elements:

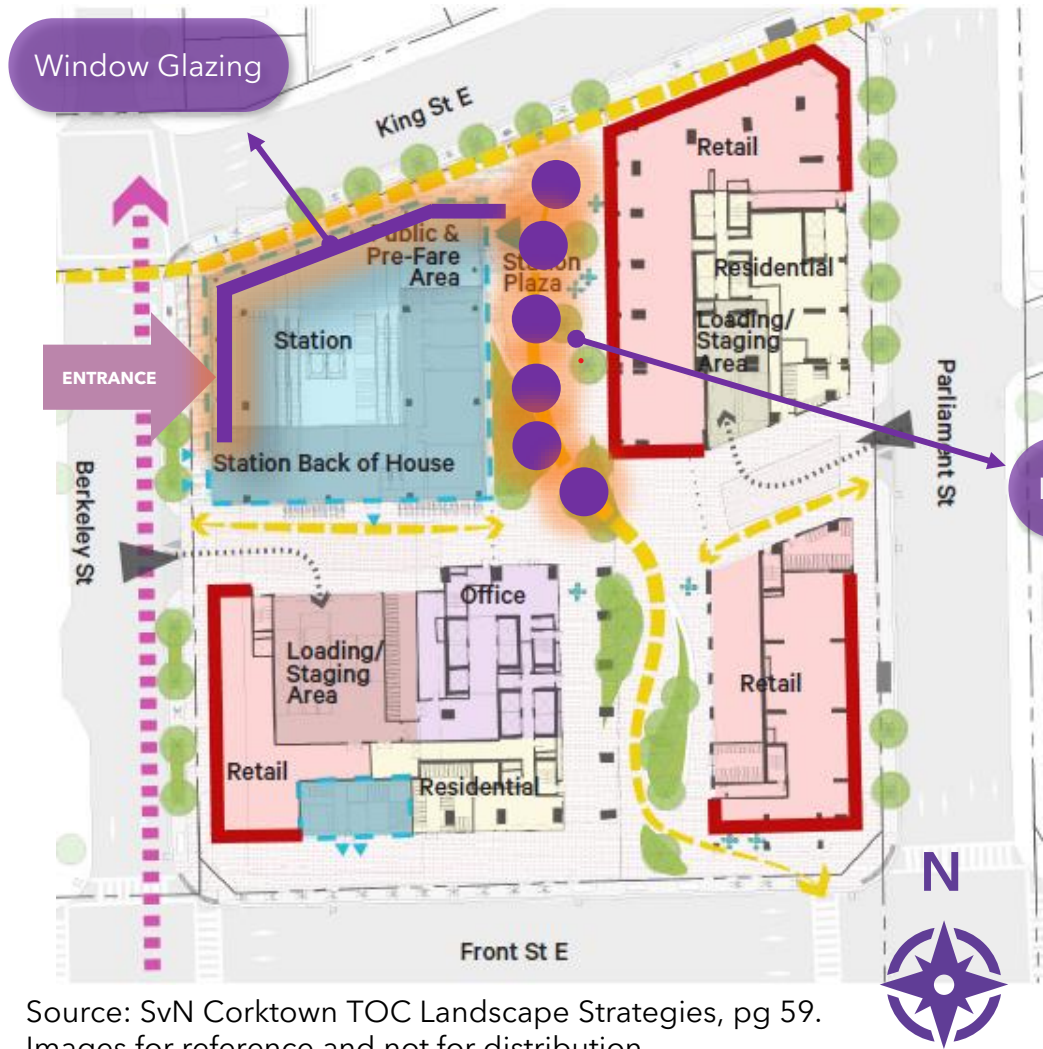
- Street-Level Entrance Graphics:** Located at the top of the rendering, pointing to a purple-shaded area above the entrance.
- Concourse Graphics: Natural Environment Archaeological Layers:** Located on the left side, pointing to a purple-shaded area on the concourse level.
- Platform Engravings:** Located at the bottom left, pointing to a purple-shaded area on the platform level.
- Landing Graphics: Timeline, First Parliament Artifacts:** Located on the right side, pointing to a purple-shaded area on an upper level.

Reference images include:

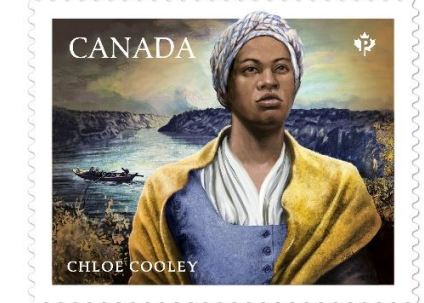
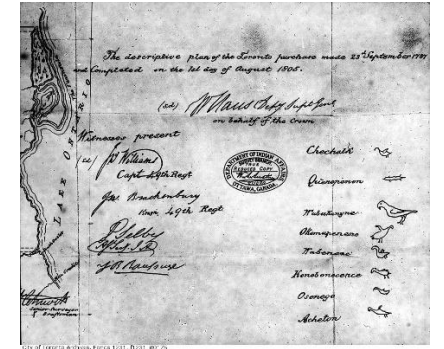
- A dark, irregularly shaped stone artifact.
- A historical map of the Corktown area.
- A large, curved wooden artifact.
- A small, carved stone artifact with a scale bar below it.
- A photograph of a person's feet on a tiled floor with engraved patterns.
- A black and white illustration of a small building.
- A technical architectural drawing of a building facade.
- A painting of a rural landscape with a church spire.
- A mosaic of numerous small, colorful circular artifacts.
- A black and white photograph of a coastal landscape with a boat.

Render of Corktown Station: interior cross-section. Station design subject to change
 Source: B.1-1.3 Corktown Station Design Report pg 27. Images for reference and not for distribution.

CORKTOWN STATION SITE PLAN: EXTERIOR INTERPRETATION



Source: SvN Corktown TOC Landscape Strategies, pg 59. Images for reference and not for distribution.



Interpretive "Nodes"

- **Indigenous Sovereignty**
- **Indigenous-British Relations**
- **Treaties & The Toronto Purchase**
- **Racism, Slavery and Abolition in Upper Canada**
- **Legislation of First & Second Parliament**
- **War of 1812 & Occupation of York**



Exterior site plan showing two station entrances and public greenspace. Exterior/Laneway = yellow-dashed lines. Station design subject to change.

Archaeological Update

Archaeological Work

Current Update

- Work continues in the North Block (north of Front Street East) with Stantec
 - Stantec has installed a tent to shelter excavations and for winter work starting November 23, 2023
 - OTG has taken over a portion of the North Block starting November 20, 2023
- First Parliament Zone excavations continue in South Block (south of Front Street East) with Archaeological Services Inc. (ASI)
- Other areas on the South Block:
 - Avoidance and protection will allow for the subway construction to proceed but then the archaeological remains will be addressed prior to the construction of the proposed transit-oriented community at Corktown
 - Seeking avoidance and protection of the 44 Parliament Street area
 - Discussing excavation or avoidance and protection options for 271 Front Street East
 - Will complete excavations at 265 Front Street East in the first half of 2024; discussions of timeline underway

Archaeological Work

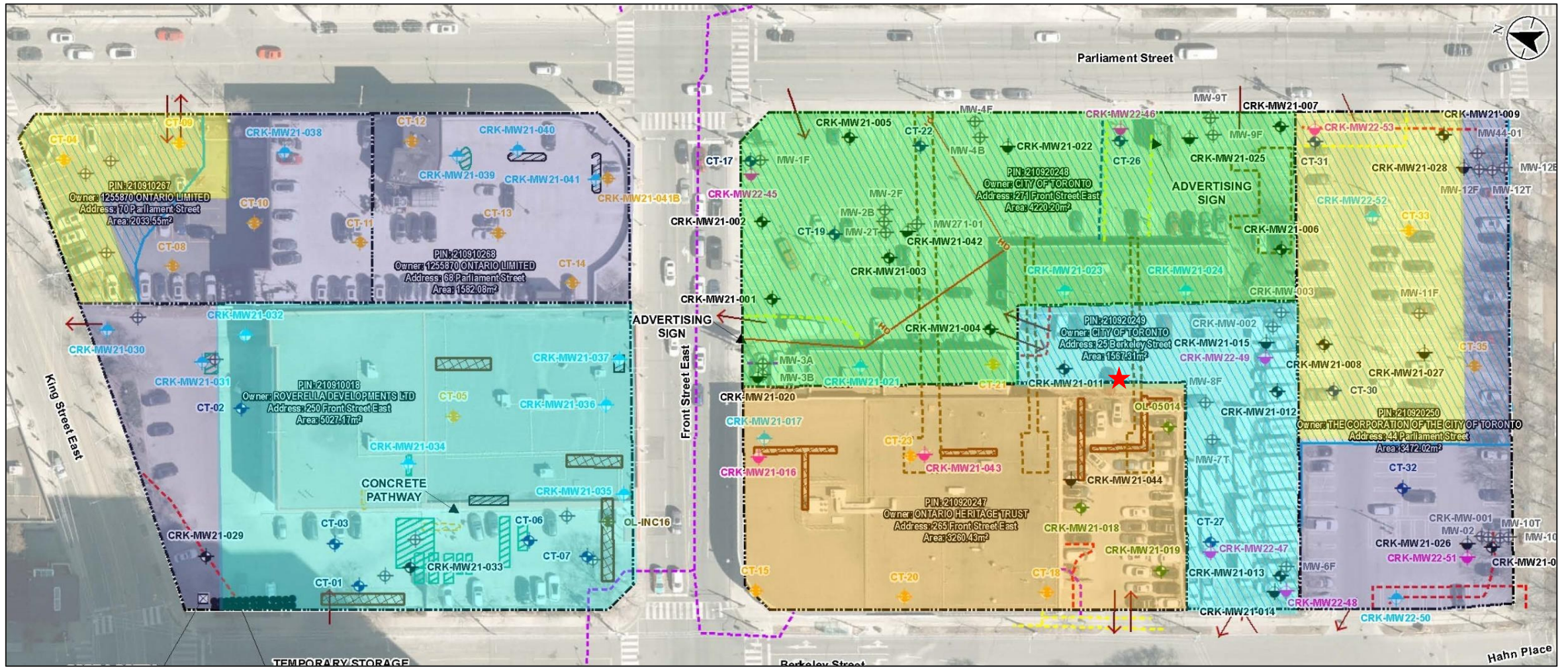
Winter Tent Installation



Tent facing Southeast



Tent facing Southwest



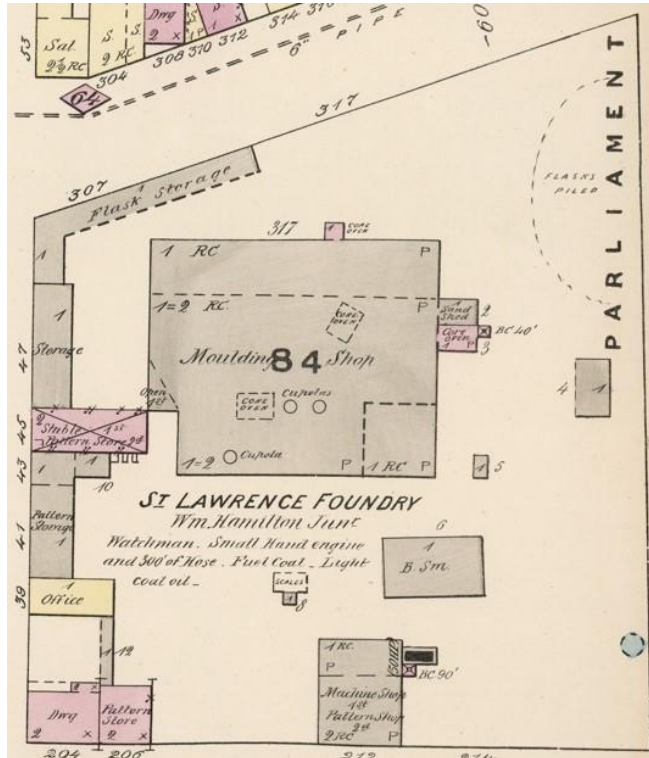
Field work complete
Excavations ongoing

Excavations to resume
To be avoided and protected

Area under discussion
★ ASI working in this area

North Block Update

- Work continuing at 250 Front Street East uncovering 19th century domestic features and features related to the Hamilton/St. Lawrence Foundry



1880 fire insurance plan depicting the North Block



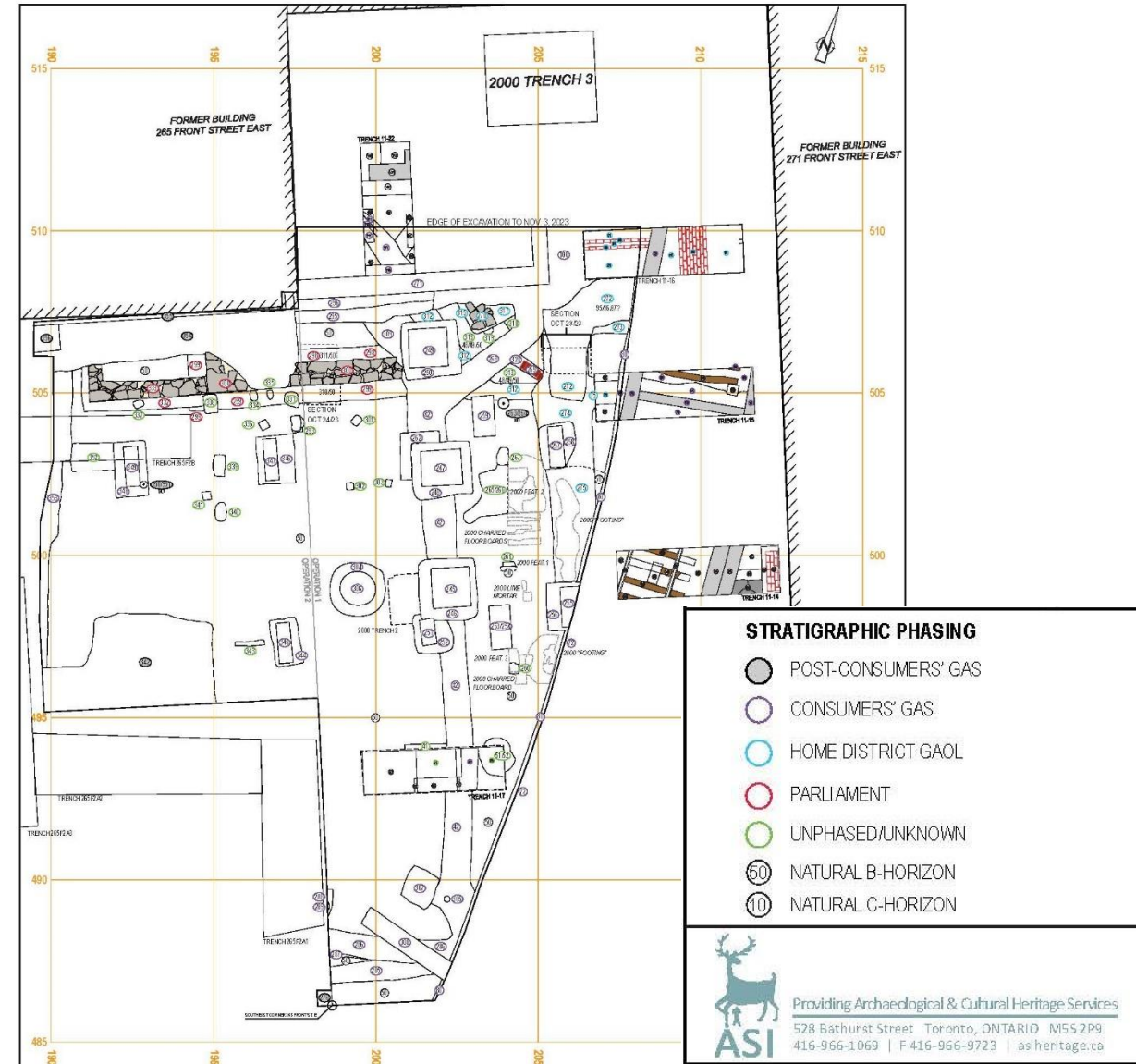
Barrels (water cisterns?) at 250 Front Street East (one in full to the left, one in profile to the right), facing northeast

First Parliament Zone Update

- ASI has exposed foundation remains associated with the First Parliament and with the Third Home District Gaol



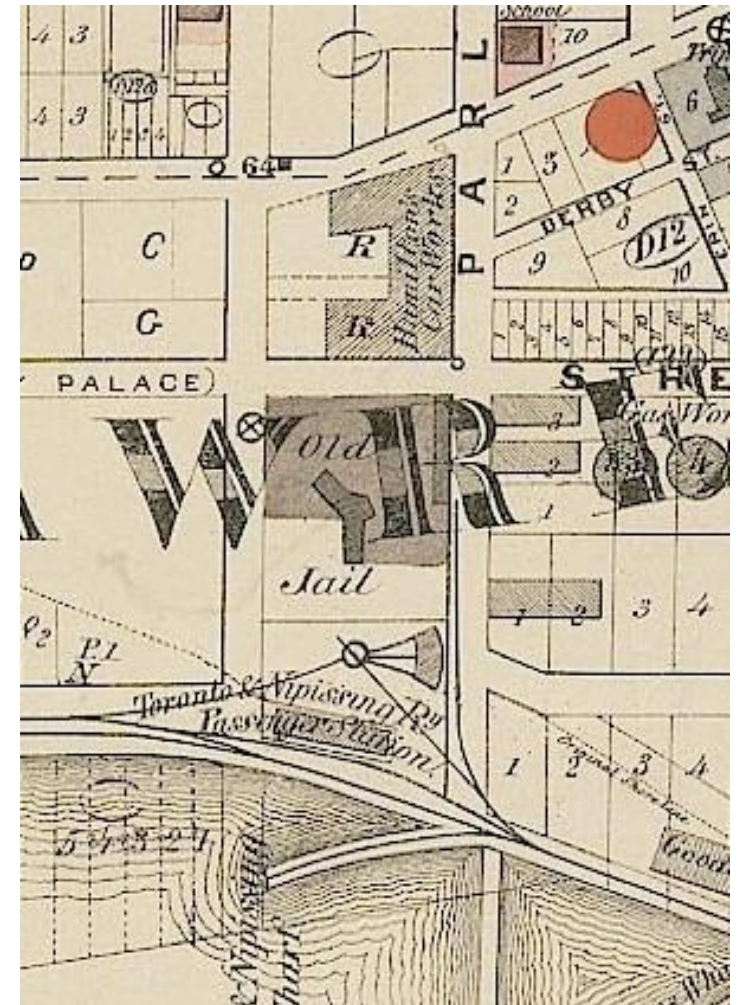
Recording the Parliament foundation by photogrammetry, facing northwest



First Parliament Zone - Maps



1811 map by Samuel Wilmot depicting the First Parliament buildings; archaeological remains are from the south wall



1872 map by Vernon Bayley Wadsworth and Charles Unwin depicting the Gaol building; archaeological remains are from the southwest wall

First Parliament Zone Update - First Parliament Wall 1

- Exposed a foundation that is 28 inches (71 centimetres) wide
- Stone on south face is dressed while the north face is rough, indicating the building interior was to the north



Section of Parliament foundation in plan: south wall of the south building, facing north

First Parliament Zone Update - First Parliament Wall 2



- Section excavated through part of the builder's trench did not contain any artifacts
- Position of the foundation indicates it is part of the south block of the First Parliament building
- Have expanded to the west of the current photo location

Exposed south face of the Parliament foundation, facing north

Construction Update



Future site of the North entrance



Future site of the South entrance

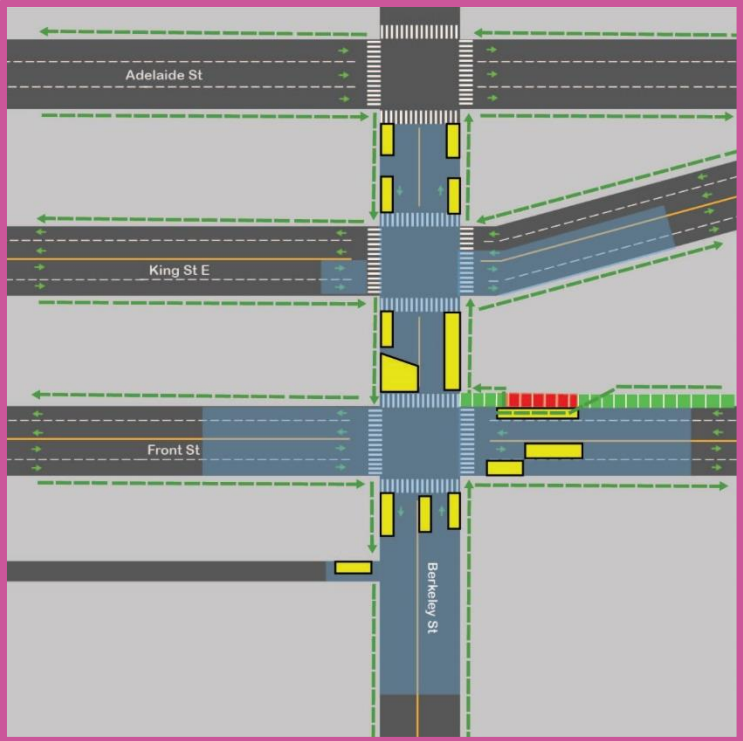
Completed Works

1 Recently finalized - October 26

Monitoring Device Installations - Berkeley Street & King Street East

Work commenced: October 19/2023. Concluded: October 26, 2023

Scope: Installation of monitoring devices underground to inspect sewer lines.
Neighbourhood mailer delivered by OTG team members on October 13/2023.



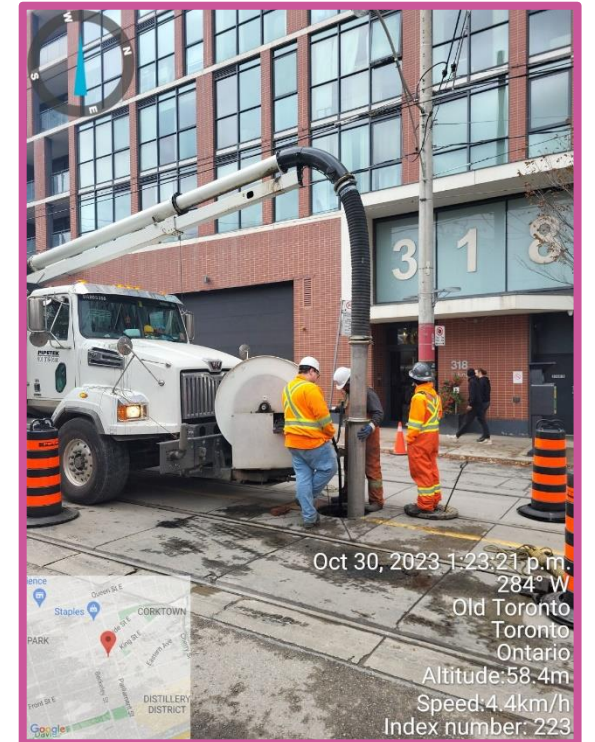
Completed Works

2 Recently finalized early November

Sewer & Utility Surveying - Berkeley Street, Front Street and King Street East

Work commenced: October 17/ 2023. Concluded: November 2/ 2023

Scope: Sewer inspections and utility services such as surveying and leak detection.



Monitoring Devices



Utility Monitoring Points

Ground Monitoring Points

Upcoming Work

5

Fall/Winter 2023 - Spring 2024

- Inclinometers installation
- Tree removal and pruning
- Well decommissioning
- Hoarding and installation of pedestrian tunnels
- Site grading
- Erosion and sediment control
- Sewer discharge and water treatment system
- Working platform preparation
- Preparation of site amenities



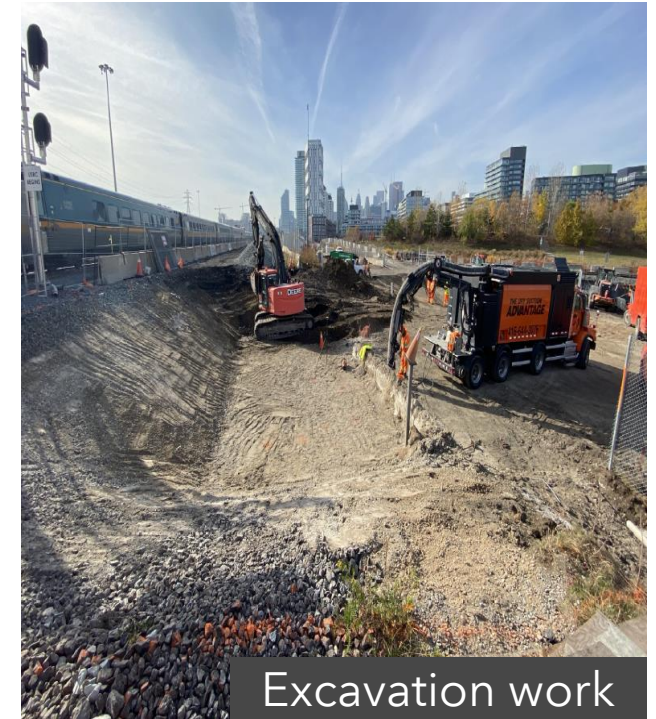
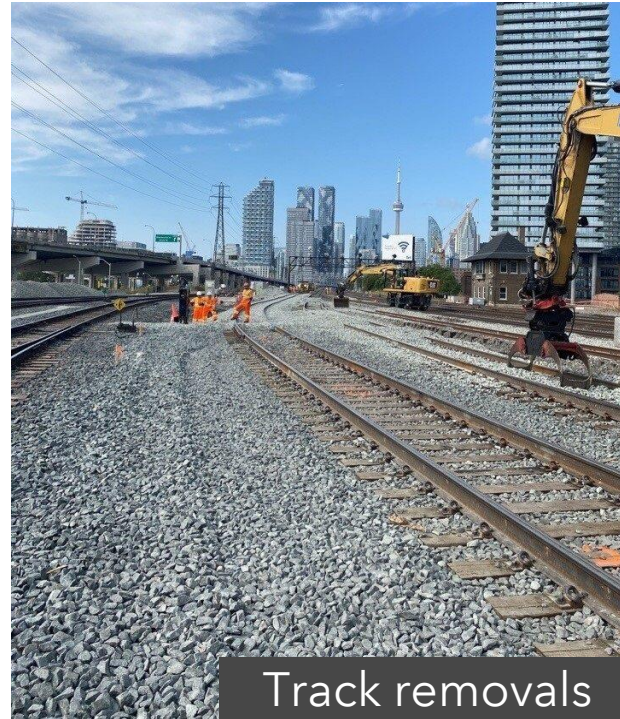
Archaeological work at the future site of the North Station

Don Yard Enabling Works

Don Yard Enabling Works

Current Work: Lower Don Bridge and Don Yard

- Train signal installation and track relocation work continues
- Crews are currently building the foundation for the new signal bridge, removing old tracks, and levelling the ground for new track installations
- Construction activities include excavation, grading, drilling, and concrete pours
- This work is ongoing Sunday - Friday between 7 a.m. - 7 p.m. (day shift) and 8 p.m. - 5 a.m. (night shift) through Spring 2024



Don Yard Enabling Works

Upcoming Work: Lower Don Bridge and Don Yard

Enabling Works Package One:

- In Spring 2024, there will be three weekend closures of the Lakeshore East GO rail corridor to complete track and signal relocation work

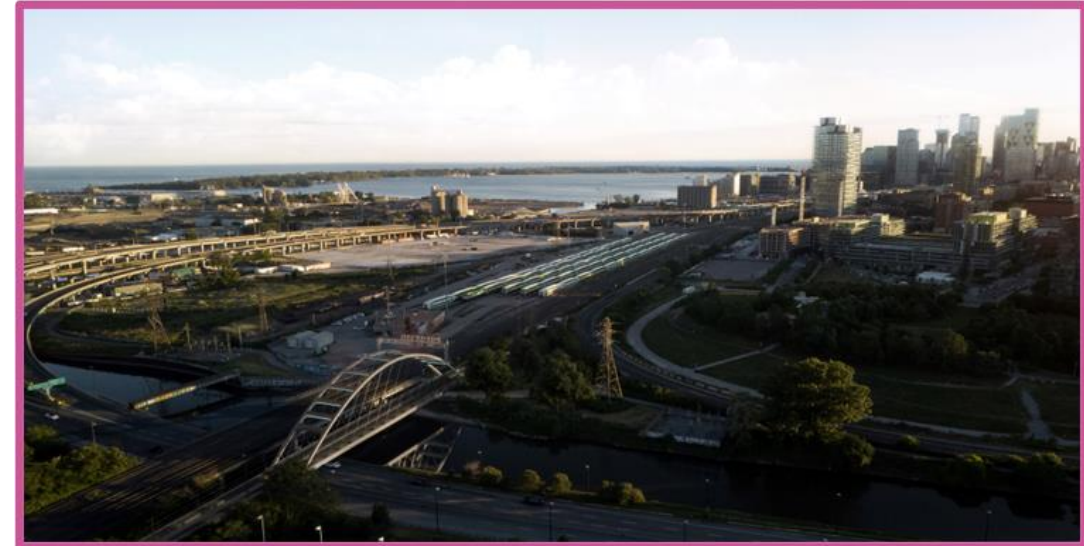
Enabling Works Package Three:

The contract has been awarded for Enabling Works Package Three (EW3).

The scope of work for this package includes:

- Building a new bridge over the Lower Don River to carry the Ontario Line tracks
- Constructing a portal and cut-and-cover tunnel to support the transition of the Ontario Line from surface to tunnel

In December 2023, the contractor will mobilize to the Don Yard site and begin preparation work such as setting up site trailers, and delivering materials and equipment. Construction of the new bridge will begin in February 2024 on the east side of the Don River. Further details on EW3 construction will be provided at the January CLC.



**Artists rendering of the completed project. Subject to change.*

Discussion



Berkeley St

King St E

Artist's rendering – subject to change. Transit-Oriented Community proposals not shown.

WE ARE HERE FOR YOU

Metrolinx will keep the community, residents and businesses informed by providing project updates, seeking input and feedback, and addressing questions and concerns effectively and quickly.

Connect with us:

Zahrah Munas, Community Engagement Advisor Zahrah.Munas@metrolinx.com or 437-328-5354

Mark Clancy, Senior Manager, Community Engagement Mark.Clancy@metrolinx.com or 647-449-2857

Email OntarioLine@metrolinx.com

Telephone 24/7 @ 416-202-5100

Ontario Line e-newsletter @ Metrolinx.com/OntarioLine

Follow us on social media:

X / Facebook / Instagram @ OntarioLine

