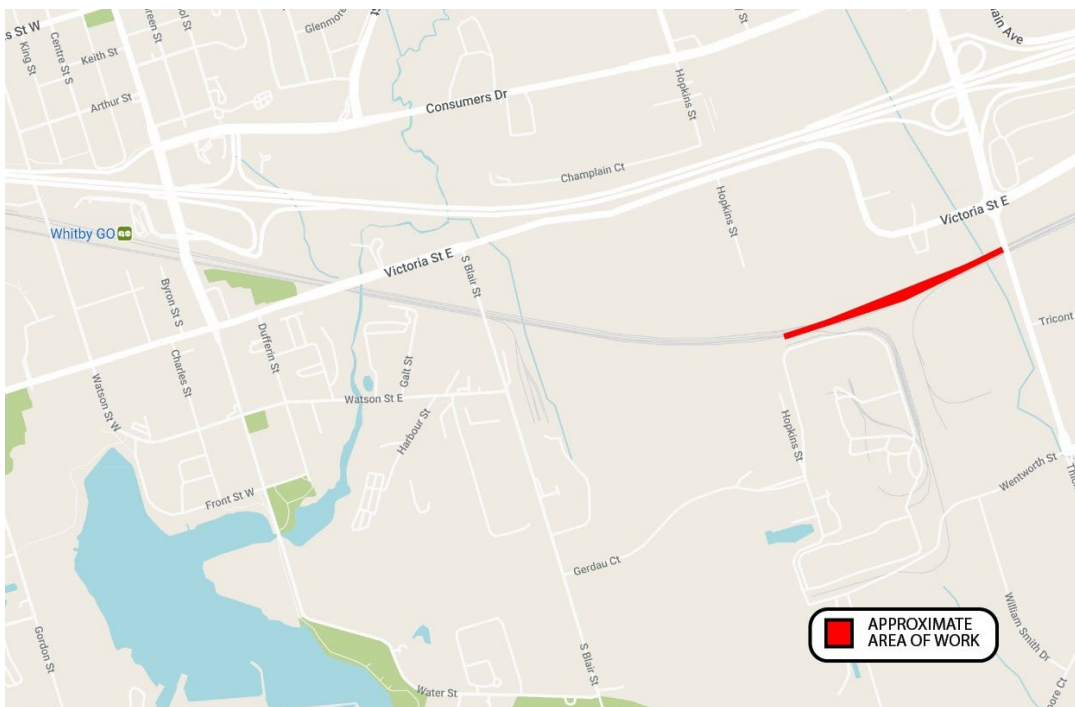


Geotechnical Investigative Work within the Lakeshore East Corridor - Whitby ON

December 21, 2023



Project Overview

GO service is expanding to serve you better - with more frequent service, more stations, cleaner technology, and more connections. Across the entire network, our goal is to deliver over 10,000 train trips a week - so you won't need a schedule because you know the next train will be coming soon. GO Expansion will transform the GO rail network from a commuter service into an all-day, rapid system.

What You Need to Know

As part of investigative work for the GO Expansion project, crews will be drilling vertical boreholes to assess ground conditions within the Lakeshore East rail corridor. This work will support future track and infrastructure updates.

WHAT TO EXPECT

- Crews will use a drill rig to perform the investigation works. The drill is rotated and pushed into the ground by the drill head. Once the desired depth is reached, a soil sample is retrieved for analysis.
- In advance of borehole drilling, crews are required to identify underground utilities and clear a path at certain borehole locations to move a drill rig within the corridor.
- This may involve routine maintenance and removal of small shrubs and other low-lying vegetation.
- A vac-truck may be used at certain borehole locations to identify utilities in advance of drilling.
- Residents may experience some noise and minor vibration from the drill and other construction vehicles or equipment.
- Noise and vibration monitoring will take place and mitigation measures will be applied as required.
- Work will take place within the rail corridor.
- Site lighting will be pointed away from residences.
- We apologize for any inconvenience and ask for your patience as we complete this critical work.

HOURS OF WORK

- Drilling is expected to take place Monday - Sunday beginning December 21, 2023.
- Work will progress in stages within the area highlighted on the map for approximately three weeks.
- Drilling will move within this section of the corridor gradually.
- Work may be scheduled for daytime or overnight hours.
- Daytime working hours are scheduled whenever possible; however, some activities are required to take place overnight when trains are not in service.

TRAFFIC DETAILS

- No anticipated impact to traffic.

PEDESTRIAN DETAILS

- No anticipated impact to pedestrians.

TRANSIT INFORMATION

- No anticipated impact to transit.



Scan the QR code to watch a video and learn more about this important investigative work.

This construction notice can be translated into a different language upon request by emailing us at DurhamRegion@metrolinx.com.

Cet avis de travaux de construction est disponible en français. Si vous êtes intéressé, veuillez envoyer un courriel à DurhamRegion@metrolinx.com.

Contact Us:

✉ Write to us at: DurhamRegion@metrolinx.com

🐦 Find us on Twitter [@GOExpansion](https://twitter.com/GOExpansion)

🌐 Visit the website: <https://www.metrolinx.com/en/projects-and-programs/go-expansion>