

GO Expansion

# Aurora GO & Yonge Street Bridge Construction Liaison Committee

November 23, 2023

 METROLINX



# Agenda

## 1. Welcome

- Land Acknowledgement
- Safety Moment
- Introductions
- CLC Overview & Terms of Reference

## 2. GO Expansion

- What is GO Expansion?

## 3. Aurora GO Station Works

- Project Overview
- Recent Milestones
- Upcoming Work
- Q&A

## 4. Yonge Street Bridge Works

- Project Overview
- Recent Milestones
- Upcoming Work
- Q&A

## 5. Next Steps

- Meeting Format & Frequency
- Contact Us

# Land Acknowledgement

Let us take a moment to acknowledge we are on lands that have been, and continue to be, home to many Indigenous Peoples including the Anishnabeg, the Haudenosaunee and the Huron-Wendat peoples.

We are all Treaty people. Many of us have come here as settlers, as immigrants or involuntarily as part of the trans-Atlantic slave trade, in this generation, or generations past.

We acknowledge the historic and continued impacts of colonization and the need to work towards meaningful reconciliation with the original caretakers of this land.

We acknowledge that Metrolinx operates on territories and lands covered by many treaties that affirm and value the rights of Indigenous communities, Nations and Peoples.

We understand the importance of working towards reconciliation with the original caretakers of this land. At Metrolinx, we will conduct business in a manner that is built on a foundation of trust, respect and collaboration.



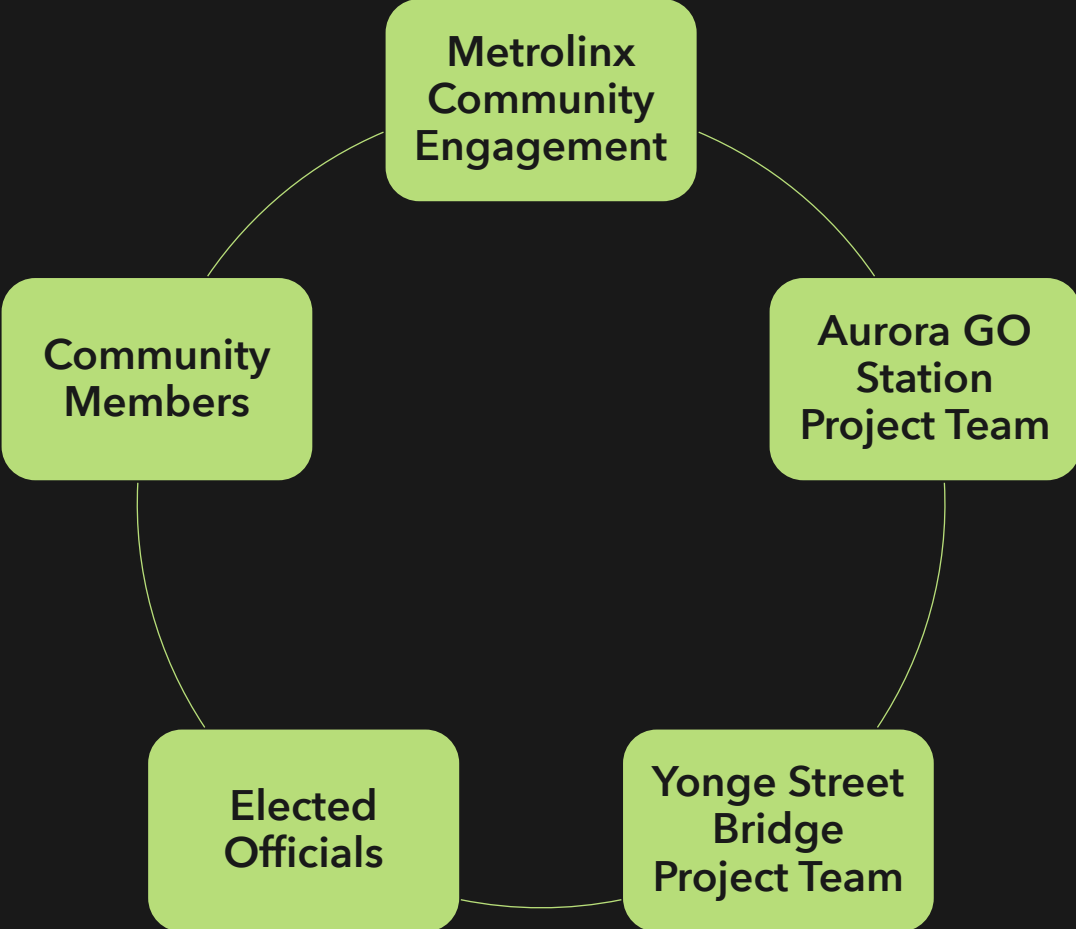
# Safety Moment

- Dress warmly (hats, gloves, layers and thick socks)
- Carry an extra pair of gloves or socks in case they get wet
- Use tools and machines with controls designed to be operated by gloved hands





# Introductions



# Construction Liaison Committee

The Aurora GO & Yonge Street Bridge Construction Liaison Committee (CLC) will serve as a forum to regularly share information through effective dialogue between Metrolinx and stakeholders, including elected officials, area residents and businesses, with opportunities to:

- Engage in two-way dialogue – Metrolinx to provide relevant information in a clear, accessible, and timely manner to committee members. Committee members to reflect the views of their wider communities in committee meetings, and pass on information gathered in meetings to those they represent.
- Identify and prioritize local needs and preferences to guide refinements of the construction plan and schedule.
- Disseminate information related to project milestones and construction activities.



## Community Representatives

- Residents and Associations
- Business Owners
- Transit Users



## Town of Aurora

- Elected Officials



## Metrolinx Teams & Contractors

- Metrolinx Community Engagement
- Metrolinx Project Delivery Teams
- Contractors

# Terms of Reference

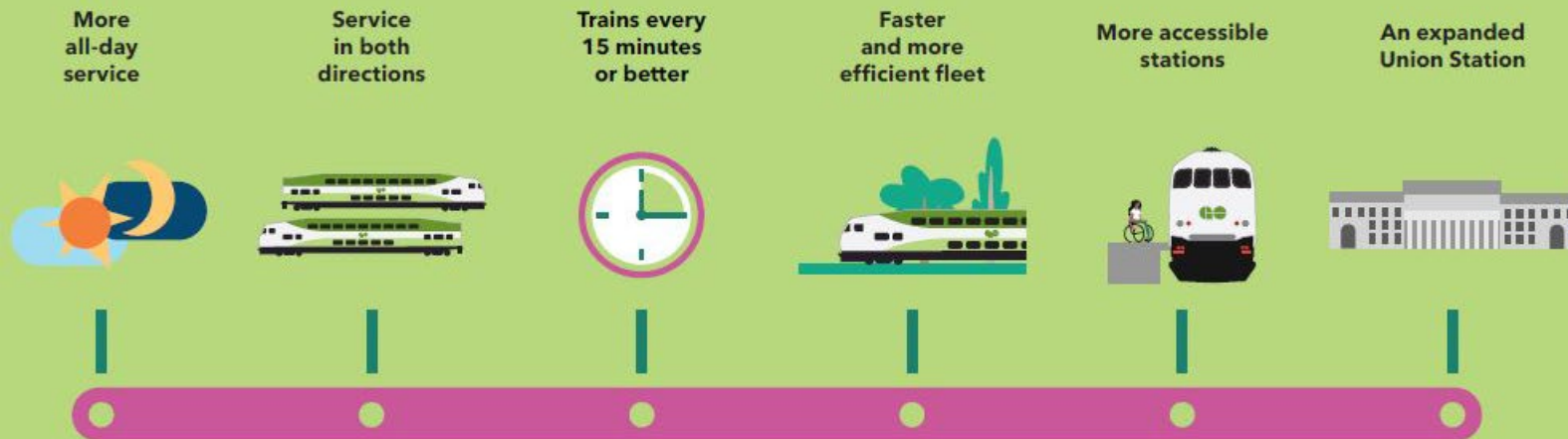
- 1.0** Objective
- 2.0** Scope
- 3.0** Meeting Frequency
- 4.0** Membership
- 5.0** Responsibility
- 6.0** Conflicts of Interest
- 7.0** Code of Conduct & Confidentiality
- 8.0** Other

The Terms of Reference will be reviewed and updated as required to ensure that the objective and membership remain current and appropriate.

# What is GO Expansion?

Making travel through the Greater Golden Horseshoe better, faster, and easier!

- New tracks
- Faster, more frequent service, with capacity for service every 15 minutes or better on our core lines
- New and upgraded stations
- Electrification
- Connections to local and regional transit networks





# Aurora GO Station Works



# Project Overview

We're making improvements at Aurora GO Station that will accommodate more service options and provide better customer access.

These improvements include:

- A **second track** to allow for the increase of two-way service at Aurora GO and along much of the Barrie Line
- A newly constructed **west platform** with barrier-free connections as well as south pedestrian tunnels
- An extension of the **south pedestrian tunnels** (that were previously built in anticipation of this work) to connect the new west platform to the existing east platform
- A newly constructed **passenger pick-up/drop-off area**
- A **new exit at Berczy Street** which will improve passenger access and flow of traffic
- The addition of **380 new overflow parking spaces at 9 Scanlon Court** (COMPLETE)
- Installation of **edge tactile tile** for improved accessibility



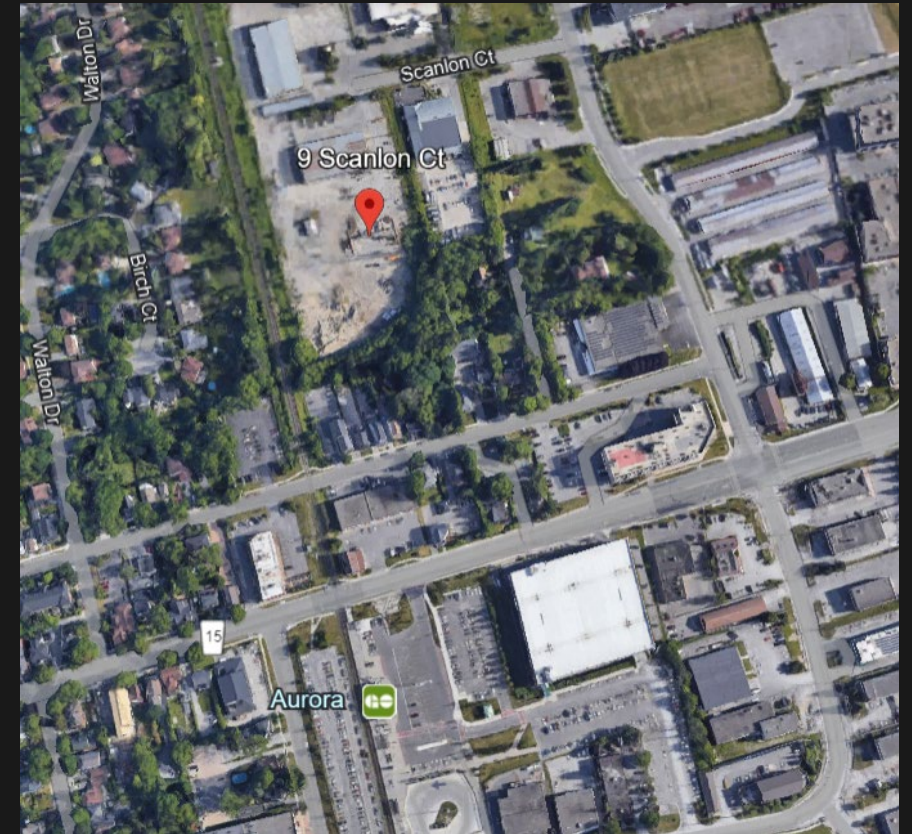
The Aurora Train Station, around 1900, combined with what it looks like today. (Photo supplied by Aurora Museum & Archives (987.15.2) and On This Spot)



# Recent Milestones

## A new overflow parking lot with 380 spaces was opened at 9 Scanlon Court in October 2023.

- The west parking lot (293 spaces) and a section of the parking lot at 12 Industrial Parkway (19 spaces) will remain closed for the duration of construction (until late 2025)
- The new overflow lot replaces the spaces lost at these two lots, and provides 68 additional spaces
- Accessible parking will remain available at the parking structure and the north lot
- The Scanlon Court lot is a 15-minute walk from the station, so please plan your trip accordingly
- To make this lot more accessible, Metrolinx and the Town of Aurora have worked together to install sidewalks on the south side of Scanlon Court and along parts of Industrial Parkway from Centre Street to Wellington Street to create a continuous path for pedestrians to and from the station
- Signage has also been installed to improve wayfinding



# Recent Milestones

The bus loop reconfiguration at Aurora GO was recently completed in mid-November 2023.



- With the completion of this work, crews will be able to set-up the east Tunnel Work Zone
- This is where we will be working on the tunnels that will connect to the new west platform
- The Tunnel Work Zone will remain just west of the bus loop for approximately two years (until late 2025)
- The bus loop will remain reconfigured until the tunnel work is completed (until late 2025)



# Current Activities

## Track Preparation

- Wellington Street to south of platform
- You may notice crews working in the rail corridor
- This will not impact any scheduled train service

## Temporary East Platform Extension

- To prevent GO train door closures resulting from the Tunnel Work Zone
- You may notice crews working at the south end of the east platform
- This will not impact any scheduled train service
- The east platform will remain open

**WORK HOURS: 7:00 AM to 5:00 PM, Monday to Friday.  
Weekend and overnight work may be required on occasion,  
but advance notice will be given when this is necessary.**



# Being a Good Neighbour

## Day Time Work Hours

- Any disruptive work will be done during the day to minimize noise impacts on residents

## Noise & Vibration Monitoring

- Noise and vibration levels will be monitored at all times to ensure that they are within an acceptable level (determined by industry standards)

## Preventing Door Closures

- GO train door closures are sometimes needed to accommodate construction, however, this can be an inconvenience to our customers, requiring them to make their way to another coach in order to exit
- To prevent door closures resulting from the Tunnel Work Zone, the existing east platform will be temporarily extended so that northbound trains can stop south of the tunnel work zone

## Advance Notice through Construction Notices

- Anytime there is a major impact, a construction notice will be sent out two weeks in advance



# Questions & Discussion



# Yonge Street Street Bridge Works





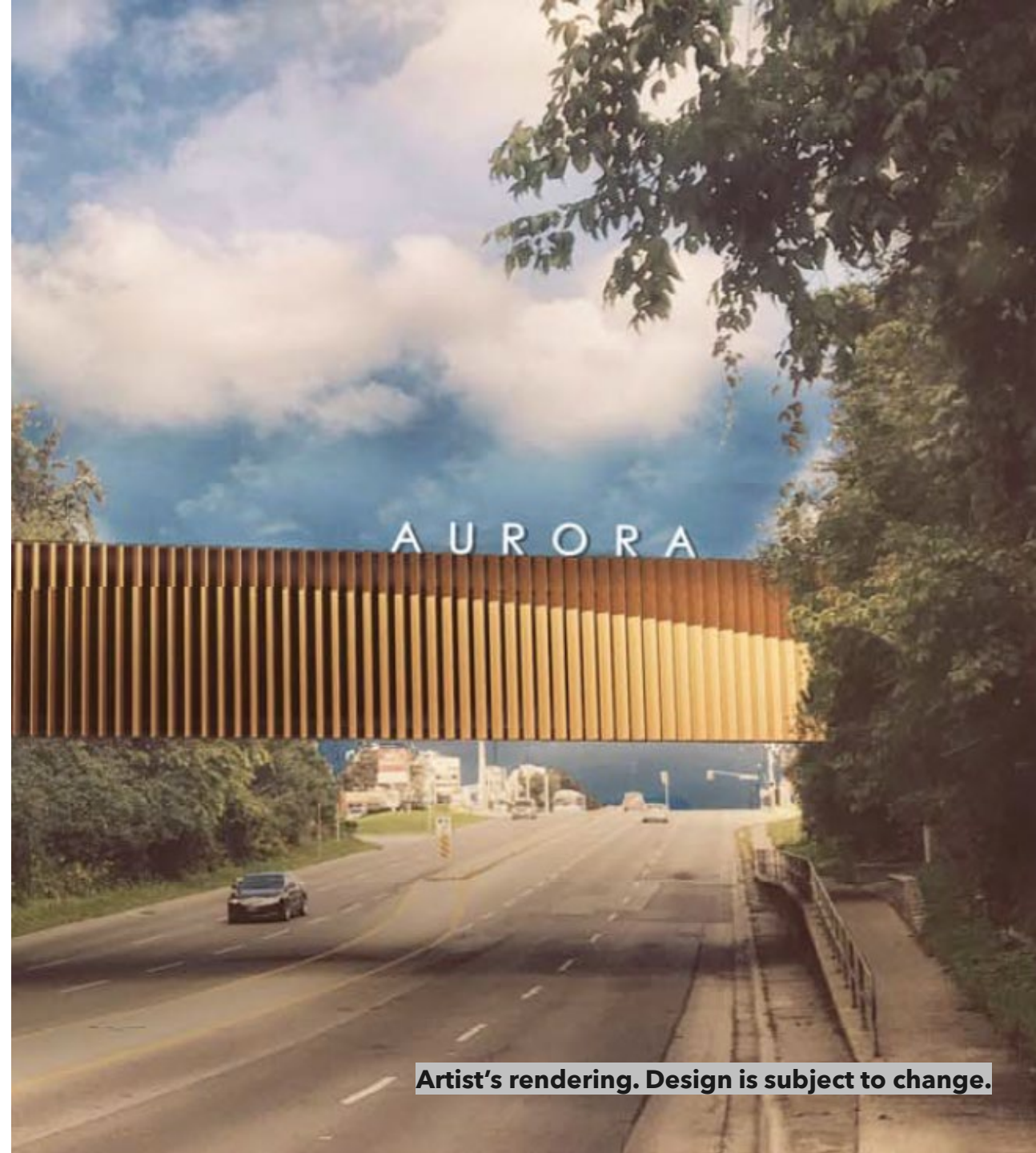
# Project Overview

Metrolinx will be twinning the Yonge Street rail bridge by building a new bridge right next to the existing one.

- Design selected at Town of Aurora General Committee meeting in 2019

This will involve rebuilding the foundation and structure of the bridge, and it will allow us to accommodate a second track along the Barrie Line.

As part of this project, we will remove and restore the sidewalks, fencing, landscaping, gutters, and existing utilities in the area.



**Artist's rendering. Design is subject to change.**

# Recent Milestones

To support the twinning of the bridge, other contractors have recently completed work at this location.

## Watermain Rehabilitation (York Region)

The Regional Municipality of York has been rehabilitating and replacing sections of an aging water feedermain along Yonge Street from Murray Drive and Edward Street to Ridge Road.



# Current Activities

## Vegetation Removals (Sept 2023 to Mar 2024)

- Within and along the rail corridor
- Expect to hear trucks, chainsaws, and woodchippers
- You may notice dots on trees that have been identified for removal

## Lane Reductions for Vegetation Removals

- A small section of the right northbound or right southbound lane (just under the bridge) will be closed on occasion while vegetation removals take place
- Signage will be in place to let motorists know that there is a lane closure and that crews are working under the bridge

**WORK HOURS: 7:00 AM to 6:00 PM, Monday to Friday. Weekend and overnight work may be required on occasion, but advance notice will be given when this is necessary.**

GO Expansion Construction Notice

### Vegetation and tree removals along the rail corridor near King City GO

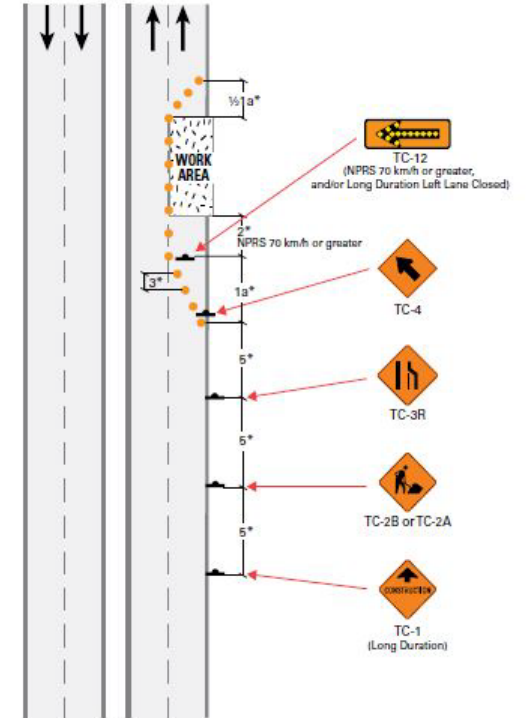
September 2023 to March 2024



Work is underway to deliver the GO Expansion Program and prepare for the future electrification of GO service. To support this work, Metrolinx will need to clear, remove and prune designated trees and vegetation located within and along the Barrie rail corridor between Kirby Road and Dufferin Street, as well as between Bathurst Street and Engelhard Drive.

Once cleared, growth control zones will be established to manage vegetation inside the corridors over the long term. Trees removed as part of this work within King Township, the City of Vaughan and Town of Aurora will be replaced through a tree restoration program based on the Metrolinx Vegetation Guideline (2022).

Information as of September 8, 2023



A construction notice about vegetation removals was sent out to those along the rail corridor in September 2023.

Traffic management on Yonge Street under the rail bridge while vegetation removals take place.



# Being a Good Neighbour

## Minimizing Disruption

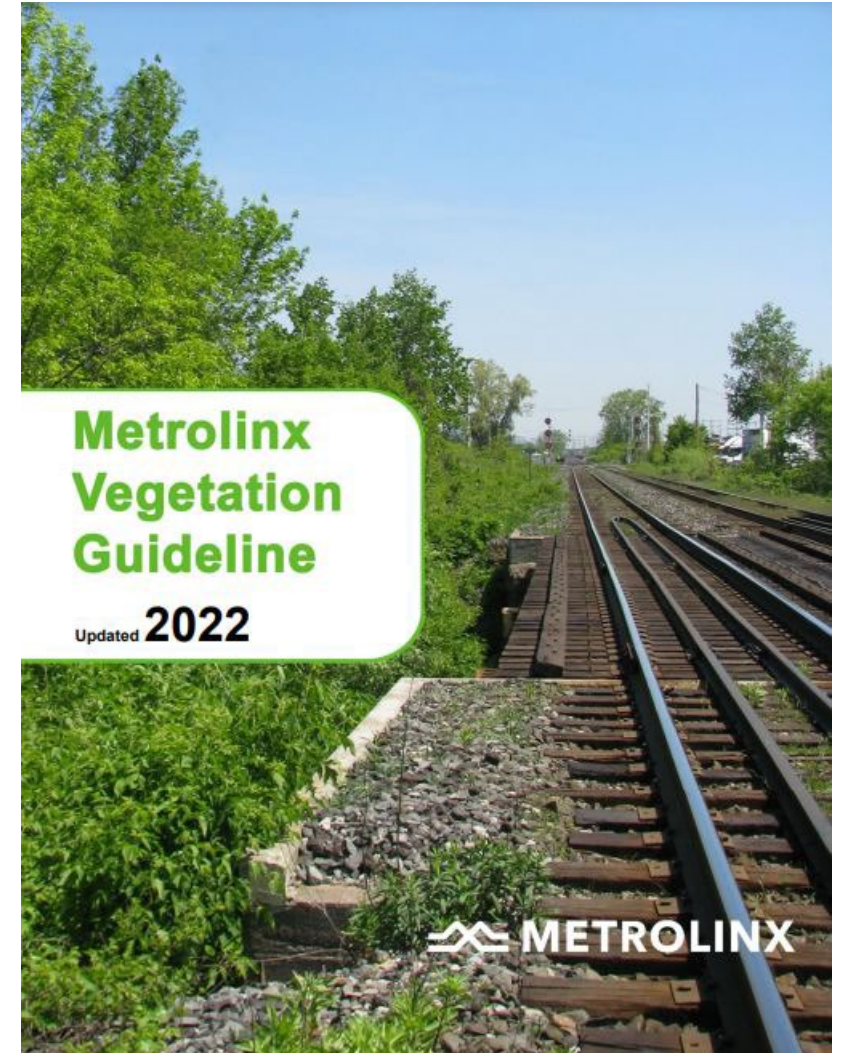
- Any disruptive work will be done during the day to minimize noise impacts to residents.
- Handheld equipment (i.e. handheld chainsaws for vegetation removals) will be used whenever possible to minimize disruption.

## Metrolinx Vegetation Guideline

- Our goal is always to keep the number of trees we remove to a minimum and we strive to replace them in areas where they are being removed as early as we can.
- The [Metrolinx Vegetation Guideline \(2022\)](#) specifies how many trees need to be planted when any tree is removed, ranging from 1 to 50 new trees based on the size and location of the tree being removed.
- 287 trees need to be removed outside the rail corridor in the Town of Aurora. There will be a total of 1662 restoration plantings in the Town of Aurora, as per the guidelines.

## Recycling & Re-using Wood

- Brush and limbs will be chipped and re-used on-site.
- Large diameter trees will be taken away for recycling and/or re-use. These trees may also be donated to the Toronto Region Conservation Authority (TRCA) for use in their restoration projects.





# Upcoming Work

## Abutment Works (Upcoming in 2024)

- Installation of bridge footings (sheet piling and drilling involving the use of heavy construction equipment)
- Starting on the west side of Yonge Street, and then moving to the east side later in 2024
- Closure of the right southbound lane while work takes place on the west side

**WORK HOURS: 7:00 AM to 6:00 PM, Monday to Friday. Weekend and overnight work may be required on occasion, but advance notice will be given when this is necessary.**



# Being a Good Neighbour

## Minimizing Disruption

- Any disruptive work will be done during the day to minimize noise impacts to residents.
- Noise and vibration levels will be monitored to ensure that they are within an acceptable level (determined by industry standards).

## Lane Reductions

- Lanes will only be reduced when necessary, and efforts will be made to keep as many lanes open as possible while construction takes place.
- While work takes place on the west side of the bridge, only the right southbound lane will be closed.


## Advance Notice through Construction Notices

- Anytime there is a major impact, a construction notice will be sent out two weeks in advance.

GO Expansion Construction Notice

### Yonge Street Rail Bridge: Twinning for Double Tracking

Starting in late 2023




(Artist rendering, design is subject to change.)

With GO service expanding to serve you better, Metrolinx is getting ready for double tracks along the Barrie Line.

Across the entire network, our goal is to deliver 6,000 train trips a week - with more frequent service, more stations, cleaner technology, and more connections. You won't need a schedule because you'll know that the next train will be coming soon. We're transforming GO Transit to bring you more frequent two-way, all-day service on the Barrie Line, up to every 15 minutes, seven days a week.

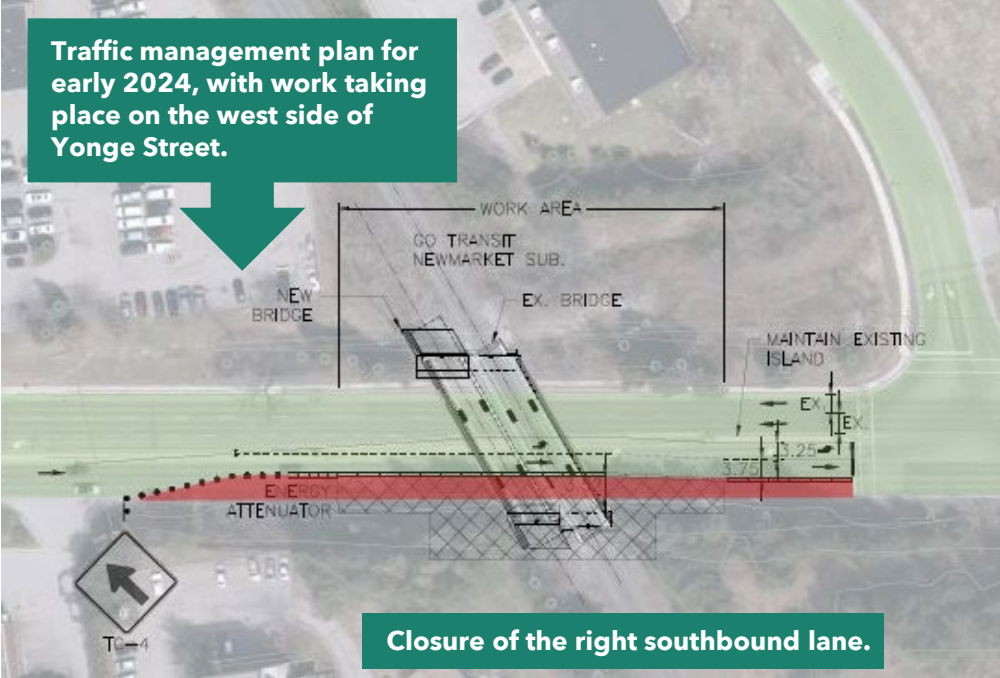
Construction on the Yonge Street rail bridge in Aurora (beginning to accommodate a second track) will be starting soon to help get you where you need to go, better, faster, and easier.

Information as of September 4, 2023



An introductory notice about the Yonge Street bridge works was sent out to those within 500m of the bridge in September 2023.

Another notice will be sent out before there is any major construction.

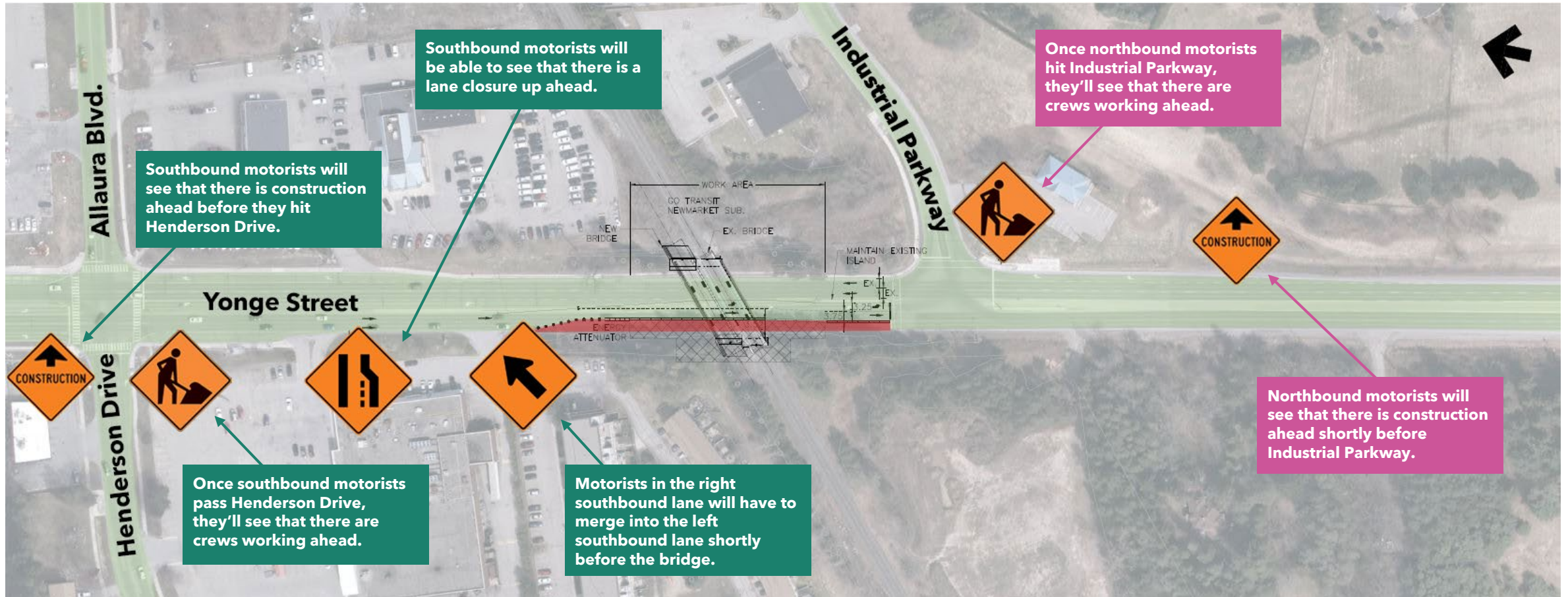


Traffic management plan for early 2024, with work taking place on the west side of Yonge Street.

Closure of the right southbound lane.



# Traffic Management Plan: Working on West Side of Yonge Street



\*Green = open lanes

Red = section of lane temporarily closed



# Questions & Discussion

# Next Steps

# Meeting Format & Frequency

## Format

- In-person, virtual, or a hybrid approach?

## Frequency

- Monthly, bi-monthly, or depending on the construction schedule?
- Date for next meeting? (January or February)



# Contact Us

## Any unanswered questions?

- Email Ella and Jessica at [YorkRegion@metrolinx.com](mailto:YorkRegion@metrolinx.com)
- Call us at 416-202-4453

## Want to learn more about Barrie Line GO Expansion?

- Visit our website at [metrolinx.com/barrie](https://metrolinx.com/barrie)
- Follow us on Instagram and X (Twitter): [@GOExpansion](https://twitter.com/GOExpansion)
- Subscribe to the York Region e-newsletter at [metrolinx.com/subscribe](https://metrolinx.com/subscribe)

## Looking for a copy of this presentation deck to share with others?

- It will be uploaded to [metrolinx.com/aurora](https://metrolinx.com/aurora)

