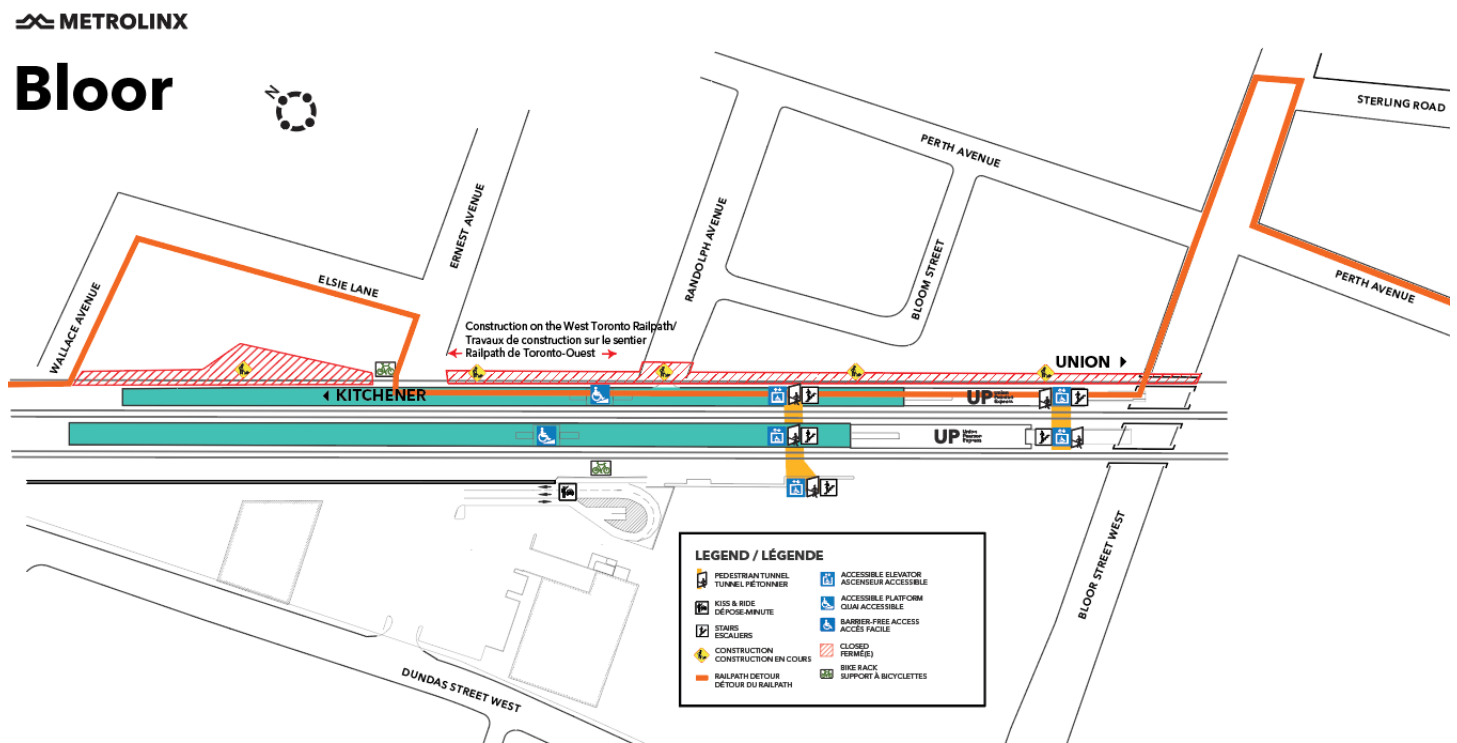


West Toronto Railpath Detour - Wallace Ave to Ernest Ave

Nov 2023



Project Overview

GO service is expanding to serve you better - with more frequent service, more stations, cleaner technology, and more connections. Across the entire network, our goal is to deliver over 10,000 train trips a week - so you won't need a schedule because you know the next train will be coming soon. GO Expansion will transform the GO rail network from a commuter service into an all-day, rapid system.

Metrolinx will be building a new track on the Kitchener GO line, next to the West Toronto Railpath. Part of this work will include construction of a new entrance to Bloor GO Station, a new community park at Ernest Avenue, and a realignment of the Railpath, on behalf of the City of Toronto.

What You Need to Know

Crews will be installing an underground stormwater storage chamber and waterlines in the future park at Ernest Avenue. The Railpath will be temporarily closed between Wallace Avenue and Ernest Avenue for approximately two weeks to complete this work. Pedestrians can use Elsie Lane to bypass this closure.

WHAT TO EXPECT

- Starting as early as November 29, 2023, the Railpath will be closed between Wallace Ave and Ernest Ave until December 15, 2023, to install an infiltration chamber and waterlines
- Access to Bloor GO Station will be maintained at all times. Railpath users can detour from Wallace or Ernest Ave to Elsie Lane, to bypass the closure.
- The temporary pathway will be restored following this work.
- The West Toronto Railpath pedestrian bridge continues to be closed. Pedestrians and cyclists can safely cross Bloor Street W at Symington Ave.
- Please respect all safety and exclusion measures installed to protect you. Thank you for your patience as we work to transform the rail corridor in your area.

HOURS OF WORK

- The majority of work will take place between 7:00 a.m. and 5:00 p.m. on weekdays.
- These dates are tentative and may be subject to change due to weather or unforeseen circumstances
- Work will be conducted as quickly and efficiently as possible to minimize disturbances, but residents and businesses near the rail corridor can expect to hear noise caused by trucks, equipment, and machinery.

Metrolinx Toronto West Community Engagement Team

Contact Us:

✉ Write to us at: TorontoWest@Metrolinx.com

Tel: 416-202-6911

🐦 Find us on Twitter: [@GOExpansion](https://twitter.com/GOExpansion)

🌐 Visit the website: www.metrolinx.com