

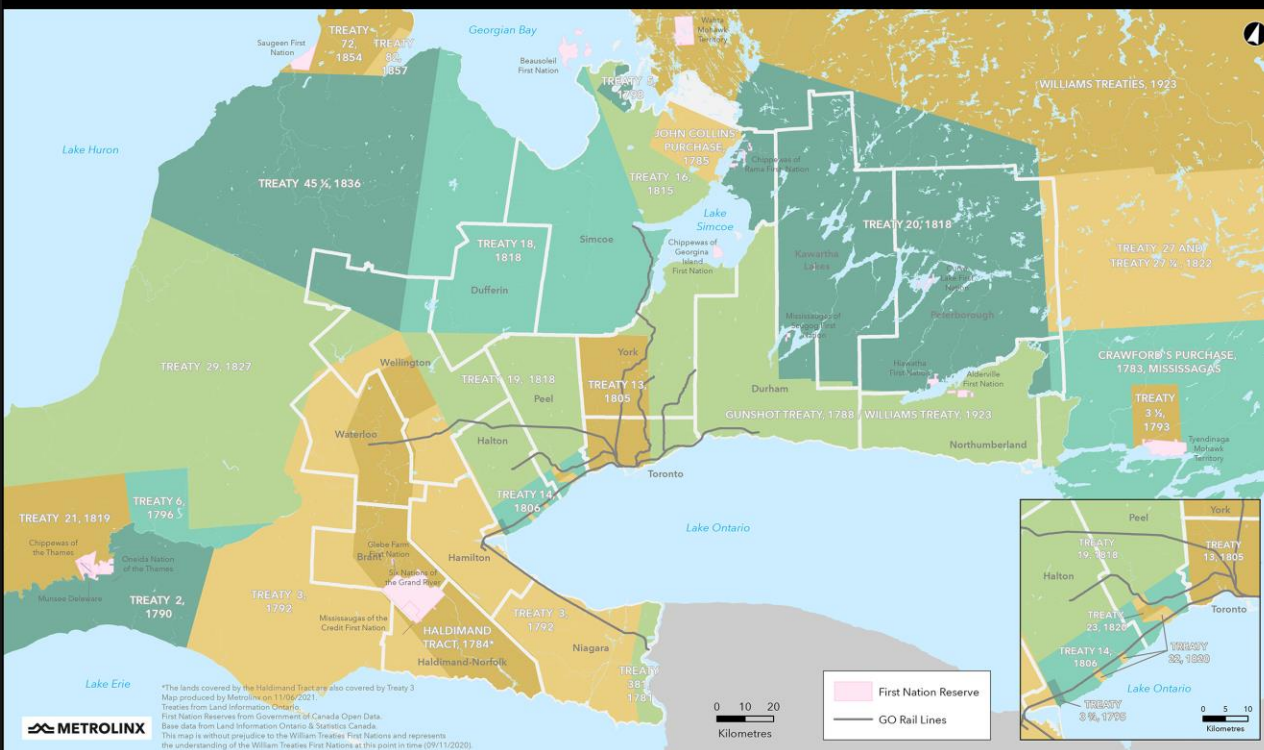
# Queen-Spadina Construction Liaison Committee - Meeting #6

December 5, 2023



# LAND ACKNOWLEDGEMENT

## Treaties and Reserves in the Greater Golden Horseshoe



Let us take a moment to acknowledge we are on lands that have been, and continue to be, home to many Indigenous Peoples including the Anishnabeg, the Haudenosaunee and the Huron-Wendat peoples.

We are all Treaty people. Many of us have come here as settlers, as immigrants or involuntarily as part of the trans-Atlantic slave trade, in this generation, or generations past.

We acknowledge the historic and continued impacts of colonization and the need to work towards meaningful reconciliation with the original caretakers of this land.

We acknowledge that Metrolinx operates on territories and lands covered by many treaties that affirm and value the rights of Indigenous communities, Nations and Peoples.

We understand the importance of working towards reconciliation with the original caretakers of this land. At Metrolinx, we will conduct business in a manner that is built on a foundation of trust, respect and collaboration.



# Agenda

## Welcome

- Introductions
- Housekeeping

## Presentation

- Action Items recap
- Construction update

## Q/A and Discussion



# Safety Moment

## Think ahead when heading outdoors in winter months

Canadians know that winter means extra precautions are needed when heading outdoors. Dress appropriately and be aware of your surroundings.

- A warm **coat, hat and toque can go along way to avoid frostbite**. Temperatures can fluctuate during the day, so even if you don't need a toque & gloves when you head out, you're better to have them packed in your coat or bag, in case you need them.
- Keep kids warm. **It's better to be overdressed than underdressed**, when kids are heading out to school or play. Waterproof boots, snowpants and gloves keep kids warm and safe, rather than reapplying wet clothing at recess. Avoid winter gear that absorbs ice and water, like cotton mittens or basic running shoes.
- **Ground conditions can be slippery**, and ice can be hidden under snow, so make sure to wear boots or shoes with proper grip.
- Visibility can be low for drivers, so **give yourself space when crossing the road**. Brightly coloured clothing helps as well.



# PREVIOUS CLC MINUTES & ACTION ITEMS

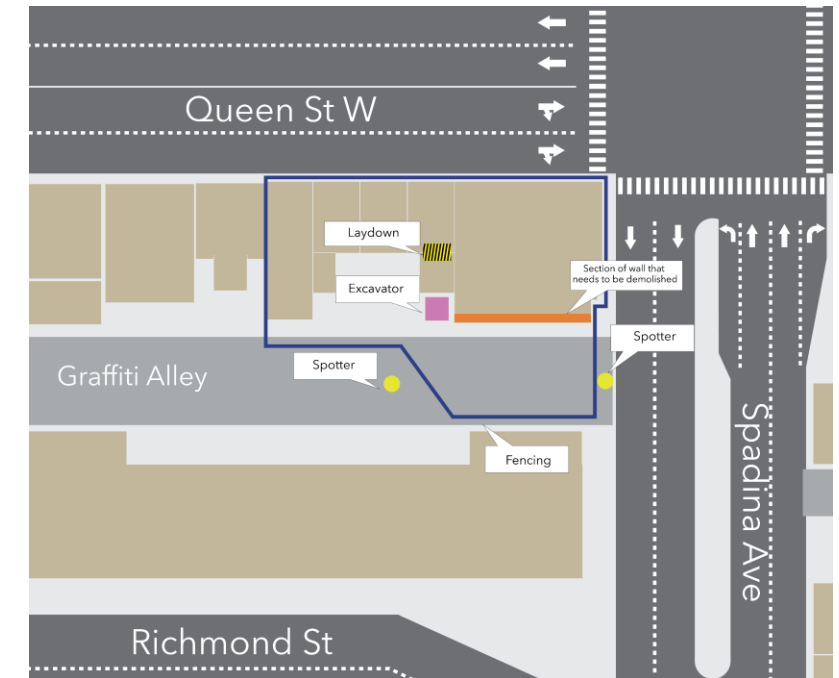
ACTION ITEM	STATUS UPDATE
<ul style="list-style-type: none"><li>• <b>Metrolinx</b> to bring information on interior and exterior station design and flow forward, as it becomes available, to future meetings.</li></ul>	<b>Metrolinx</b> to share additional information as it is available.
<ul style="list-style-type: none"><li>• <b>Metrolinx</b> to explore conducting a Community Policing Through Environmental Design (CPTED) review.</li></ul>	<b>OTG</b> reaching out to coordinate.
<ul style="list-style-type: none"><li>• <b>Metrolinx</b> to look into sharing noise and vibration study results.</li></ul>	<b>Metrolinx</b> exploring best practices for sharing noise and vibration updates in future CLC meetings.
<ul style="list-style-type: none"><li>• <b>Metrolinx</b> to explore capturing panelization footage as a time-lapse video as agenda items for future meetings.</li></ul>	<b>OTG</b> to capture photos of the panelization process.
<ul style="list-style-type: none"><li>• <b>Metrolinx</b> to find and share additional information on the Transit-Oriented Community Program from Infrastructure Ontario, as it pertains to any development above the Queen/Spadina stations.</li></ul>	More information about the Transit-Oriented Community Program is available from Infrastructure Ontario ( <a href="https://www.infrastructureontario.ca/transit-oriented-communities-subways">Transit-Oriented communities subways (infrastructureontario.ca)</a> )

# Construction Update

# Focus on: Demolition + Heritage Preservation

## 1 Future South Station Site

- Water disconnections by City of Toronto at 443 Queen St (TD Bank) and 378 Queen St (CIBC Bank) completed.
- Mechanical demolition has been completed at 449, 451, 453 and 455 Queen St W.
- Demolition at 443 Queen St W (TD Bank) underway.
- Flaggers and signage placed at Graffiti Alley for pedestrian safety during removal of south facade; fencing shifted for safety for the public during work.
- Demolition of basement walls, foundations and backfill of basements will continue through the end of the year.



*Demolition activities at South site*



# Focus on: Demolition + Heritage Preservation

## 2 Future North Station Site

- Abatement at the North site is in progress.
- Panelization and preservation of the West heritage façade in progress. Removal of panels will be completed on consecutive weekends this month.
- Mechanical demolition of the non-heritage structure of the building will start on January 3<sup>rd</sup>. Full closures at Bulwer street scheduled for January 3<sup>rd</sup>, 4<sup>th</sup> and 5<sup>th</sup>.
- Heritage retention towers foundations in progress. Installation of towers expected to start as early as mid-December and will continue in January.
- Overnight investigative works expected to continue through the end of January 2024 (instrumentation, CCTV and sewer investigations).





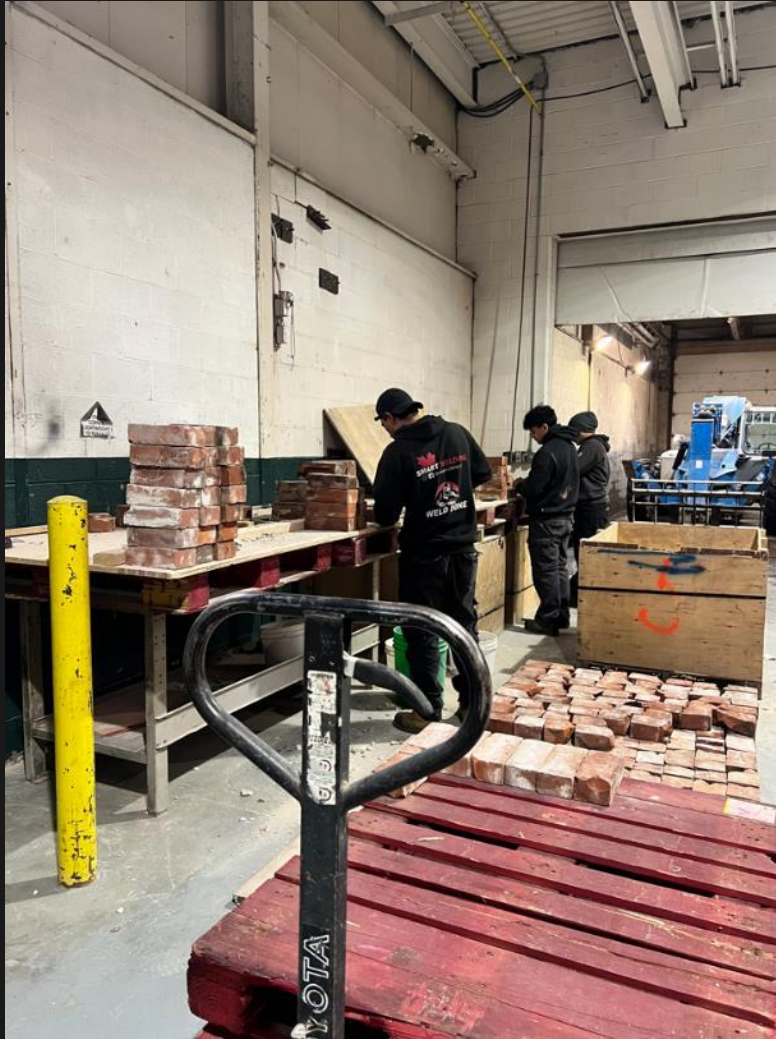
# Queen-Spadina



The building located at 378 Queen Street West was constructed in 1902.



# Warehouse - Dismantling and Salvage



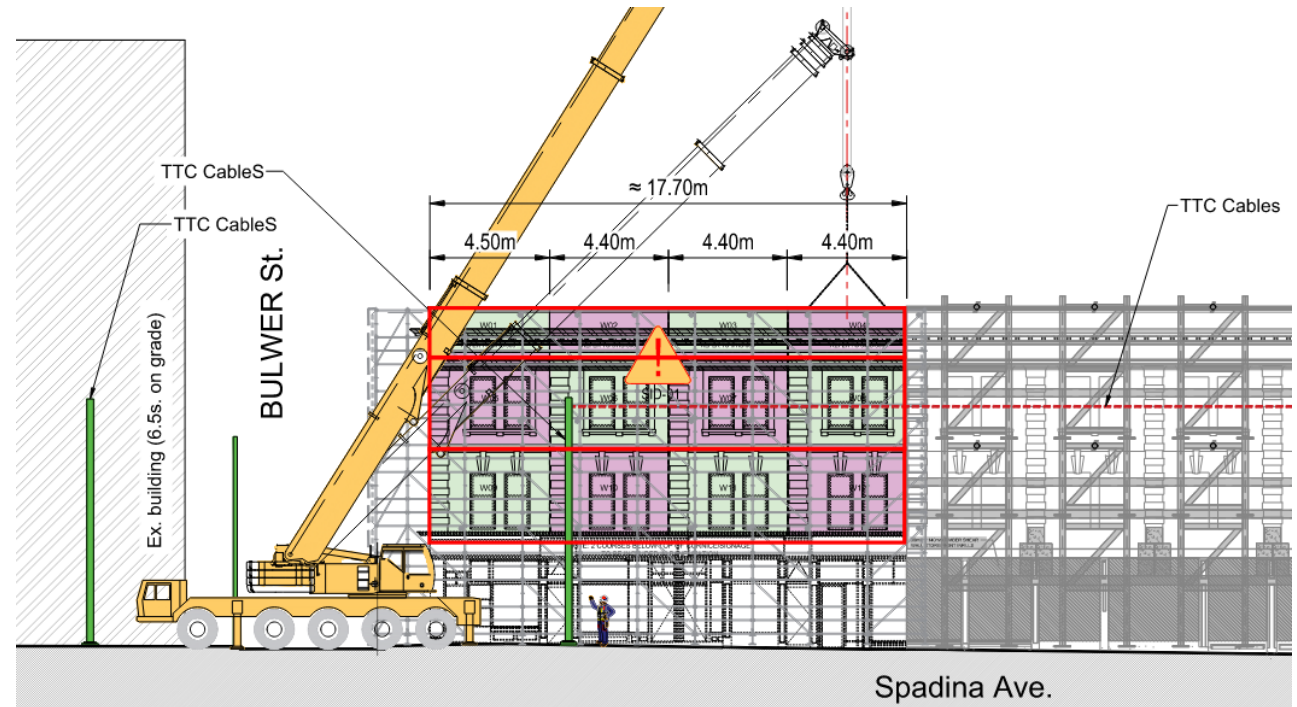
# Reminder: Weekend Road Closures for Heritage Preservation

## 3 Spadina Avenue and Bulwer Street

Select lanes will be closed to accommodate a crane to remove heritage panels from the future North station site

### Expected dates:

- December 2 - December 3
- December 9 - December 10
- December 16 - December 17
- January 3, 4 and 5, 2024
- January 6 and 7
- January 13 and 14



Technical rendering for reference only

 **METROLINX**

# Looking Ahead

## 4 Upcoming Work + Timelines

### December - Early 2024

- Heritage retention and preservation activities expected to be completed at North site
- Demolition of existing buildings at South site expected to be completed
- Initial installation of permanent fencing/hoarding, and signage
- Support of excavation (piles) in South site

### Spring - Summer 2024

- Support of excavation (piles) in North site
- Excavation of shafts, shotcrete and rock anchors



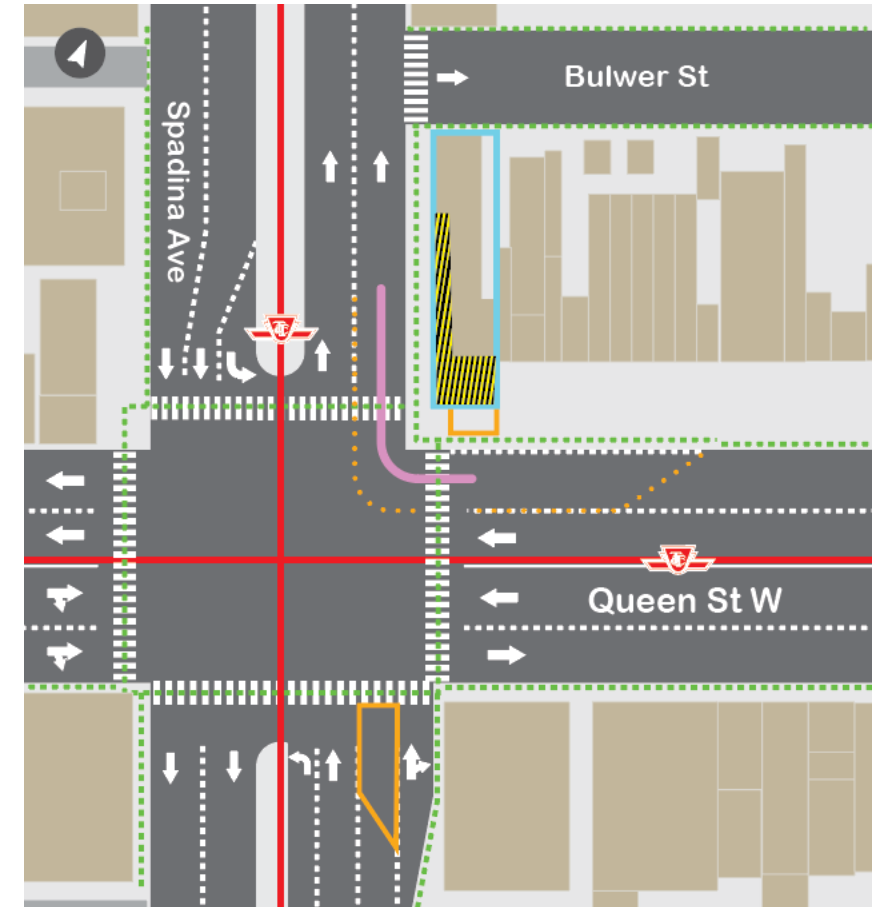
# Focus on Upcoming Work

## 5 Heritage Retention Tower Installation

Lane closures on Queen Street West and Spadina Avenue are expected accommodate installation of heritage retention towers via telehandler at the future North station site.

**Expected dates:** As early as December 11

**Expected duration:** Approximately 12 days



# Focus on Upcoming Work

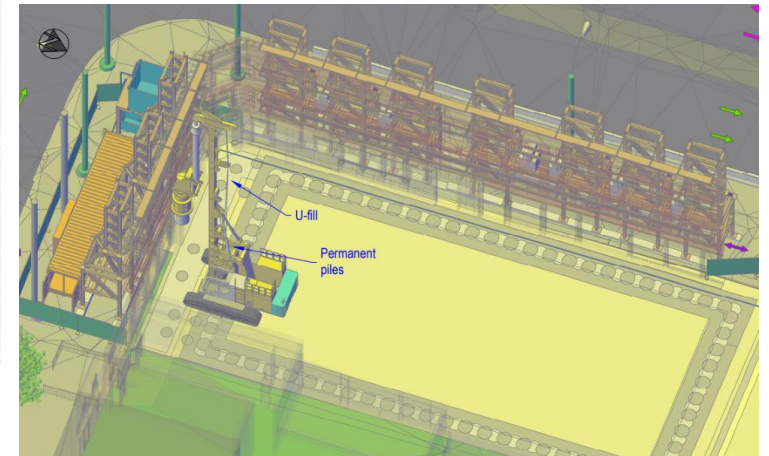
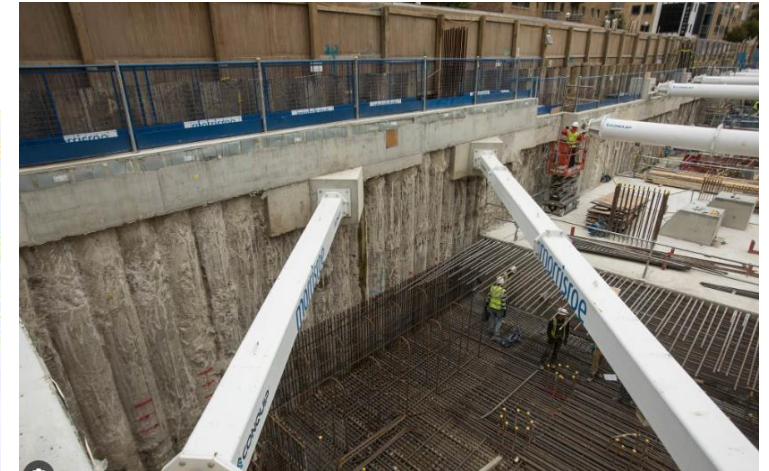
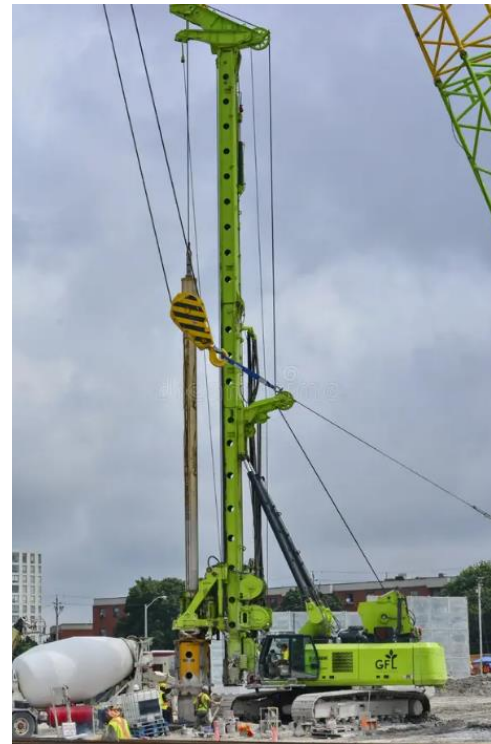
## 6 Piling (South Site)

### Installation of secant pile walls

- Starting in early 2024, crews will be installing secant pile walls to construct the access shafts to the station.
- A secant pile wall consists of overlapping (secant) piles to form structural walls and achieve the required water tightness.
- Some of the piles are reinforced with steel beams.
- To install the pile walls, a drilling machine will create a 17 to 20m deep hole (1m diameter) and it will be filled with concrete.

### What to expect?

- Hours of work expected: 7 a.m. to 7 p.m.
- Excavation of piles can produce some noise, especially when the equipment is spinning the auger with the material excavated from the pile.
- Vibration levels are expected to be limited.
- Expect to see drilling machines, cranes, excavators, concrete pumps and concrete trucks on-site during this phase of work.



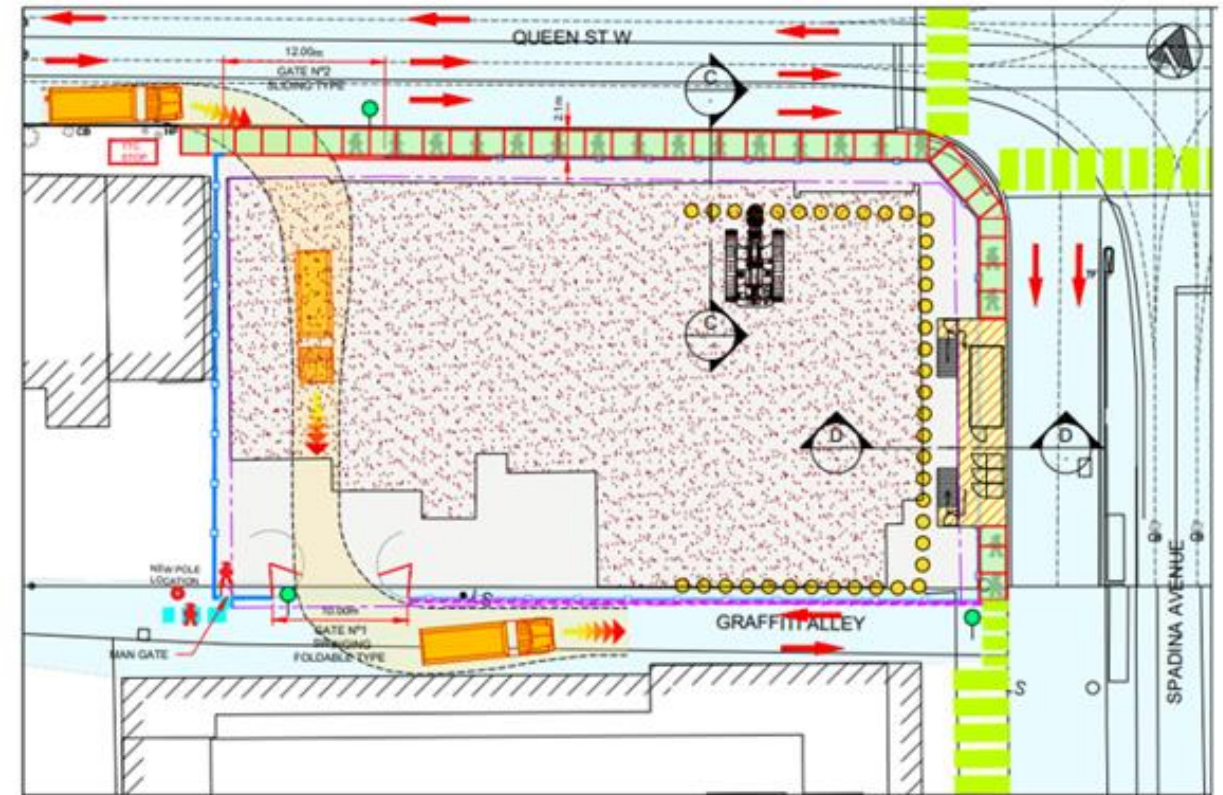


# Focus on Upcoming Work

## 6 Piling - Traffic Management

### Traffic Management

- About 10 to 15 trucks a day expected to be entering / leaving the site
- Flaggers present to assist with truck traffic and ensure site safety
- Trucks to enter South site from Queen Street West (eastbound) and exit on Spadina Avenue (southbound)
- Long term closures of Graffiti Alley
- For the North site, trucks expected to enter the site from Spadina Avenue (northbound) and will exit the site to Bulwer Street.



Expected truck route - South Site

# Queen & Spadina

## 7

## Community Outreach

### Construction Liaison Committees

- Monthly CLC meetings: virtual, in-person and hybrid options
- Next meeting: To be determined, January/February 2024

### Business Community

- Direct business outreach and canvassing
- Quarterly meetings with all BIAs along the Ontario Line in partnership with the City of Toronto Economic Development and Culture

### Community Outreach

- Virtual and in-person open houses
- Pop-ups within the community and in residential building lobbies
- In-person and virtual consultation with residences and businesses

### Community Notification

- Physical and digital distribution of construction notices
- Canvassing high impact areas
- News and information provided in the Ontario Line newsletter



# CONTACT METROLINX

**Metrolinx will keep the community, residents and businesses informed by providing project updates, seeking input and feedback and addressing questions and concerns effectively and quickly.**

---

## **Connect with us:**

Bradley Naismith, Community Engagement Advisor [bradley.naismith@metrolinx.com](mailto:bradley.naismith@metrolinx.com) or 437-326-0785

Mark Clancy, Senior Manager, Community Engagement [mark.clancy@metrolinx.com](mailto:mark.clancy@metrolinx.com) or 647-449-2857

Email: [OntarioLine@metrolinx.com](mailto:OntarioLine@metrolinx.com)

Telephone 24/7: 416-202-5100

Ontario Line e-newsletter: [Metrolinx.com/OntarioLine](https://metrolinx.com/OntarioLine)

## **Follow us on social media:**

X / Facebook / Instagram @OntarioLine

# QUESTIONS?