

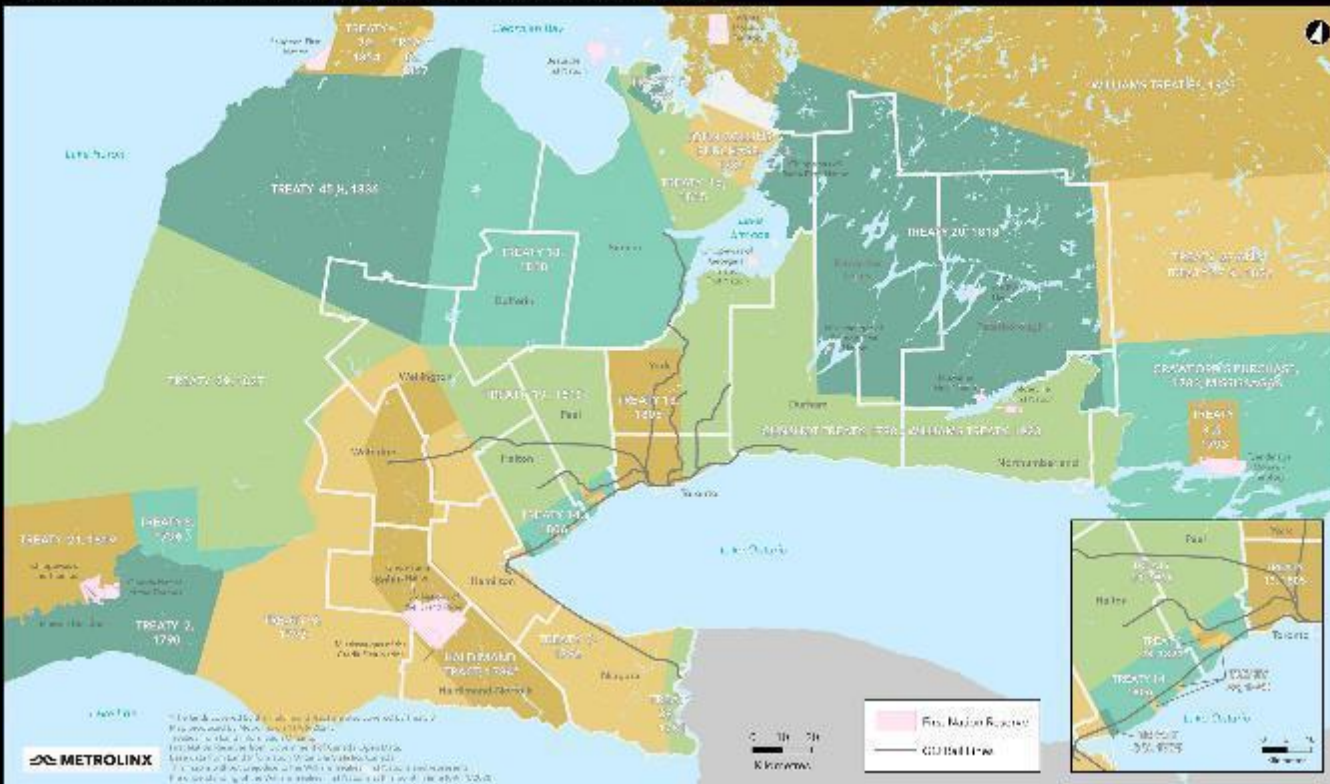


**The Ontario Line  
Lakeshore East Joint Corridor  
Early Works  
Construction Liaison Committee**

**December 7, 2023**

# LAND ACKNOWLEDGMENT

Treaties and Reserves in the Greater Golden Horseshoe



Let us take a moment to acknowledge we are on lands that have been, and continue to be, home to many Indigenous Peoples including the Anishnabeg, the Haudenosaunee and the Huron-Wendat peoples.

We are all Treaty people. Many of us have come here as settlers, as immigrants or involuntarily as part of the trans-Atlantic slave trade, in this generation, or generations past.

We acknowledge the historic and continued impacts of colonization and the need to work towards meaningful reconciliation with the original caretakers of this land.

We acknowledge that Metrolinx operates on territories and lands covered by many treaties that affirm and value the rights of Indigenous communities, Nations and Peoples.

We understand the importance of working towards reconciliation with the original caretakers of this land. At Metrolinx, we will conduct business in a manner that is built on a foundation of trust, respect and collaboration.

# Agenda

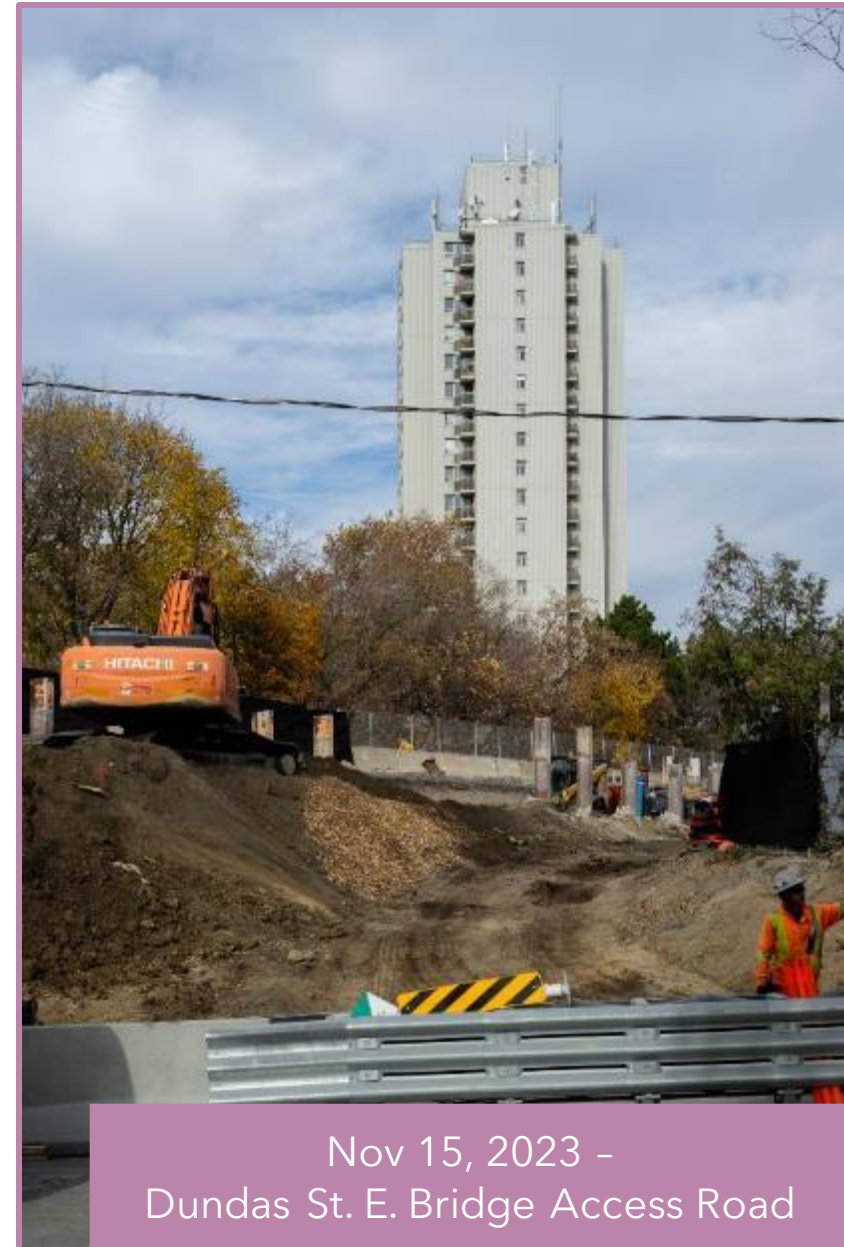
## 1. Welcome:

- Land Acknowledgement
- Safety Moment
- Action Items

## 2. Construction Update:

- Complaints and Issues Tracker
- Construction Progress:
  - Queen Street East Bridge
  - Dundas Street East Bridge
  - Logan Avenue Bridge
  - In-Corridor Work
  - Eastern Avenue Bridge

## Discussion/Next CLC



# Safety Moment - Slips and falls

**We're in the cold, wet, and snowy months! Here are some safety tips to avoid any injuries:**

- Make sure the soles of your footwear is in good condition
- Check the weather forecast before stepping out
- Clear any blockages (such as leaves) that may prevent water from draining on your property
- Avoid using your phone while walking to make sure where you're stepping is safe
- Shovel snow as soon as possible to avoid any buildup





## November CLC Action Items

Action	Response
Metrolinx and contractor to review and discuss concern with vibration report from that vicinity	Metrolinx is committed to sharing noise and vibration report summaries at upcoming CLC meetings.
Metrolinx and contractor to review suggestions to reconsider overnight retaining wall removal at Jimmie Simpson Park.	To ensure public safety, Metrolinx is required to remove the retaining wall behind the junior swing set over one night when the park is closed. Metrolinx has coordinated this schedule with City of Toronto Parks, Forestry, and Recreation. The Contractor will make best efforts to minimize noise disruption during this activity.
Concept sketch or 3D rendering of retaining wall to be prepared by Metrolinx.	As discussed during the CLC, the wall will be up before the image could be created.
Metrolinx to share East Harbour construction notices with LSE CAC and follow up with information about the recently announced TOC.	Metrolinx has sent an email to LSE CAC about East Harbour notices and TOC website.
Metrolinx to investigate opportunity for IO representative to attend a meeting.	Metrolinx will work with IO to have a representative attend future CLC meetings
Metrolinx and Contractor to take back request to halt overnight work during the holiday week.	Contractor confirmed no overnight work will take place between December 24- December 31.
Metrolinx and Contractor to investigate idea of construction master plan.	Metrolinx will work with the Contractor to confirm if a 6-month construction master plan is feasible.

# **Ontario Line Construction Update Lakeshore East Joint Corridor Early Works Construction**

# Complaints and Issues Tracker

Complaint / Issue	Resolution
<p><b>Inquiry</b></p> <ul style="list-style-type: none"> <li>Logan Ave</li> <li>Nov 04, 2023</li> </ul>	<ul style="list-style-type: none"> <li>Resident called about ongoing work and to ask about future work</li> <li>Resolution: Ongoing work and timeline for future works was explained to resident</li> </ul>
<p><b>Inquiry</b></p> <ul style="list-style-type: none"> <li>Logan Ave</li> <li>Nov 04, 2023</li> </ul>	<ul style="list-style-type: none"> <li>Resident asking about ongoing work</li> <li>Resolution: Current work and next activities were explained. Resident requested to be added to mailing list.</li> </ul>
<p><b>Noise</b></p> <ul style="list-style-type: none"> <li>Logan Ave</li> <li>Nov 04, 2023</li> </ul>	<ul style="list-style-type: none"> <li>Resident called to ask about noise mitigation items</li> <li>Resolution: Work was explained and noise mitigation items were provided.</li> </ul>
<p><b>Noise</b></p> <ul style="list-style-type: none"> <li>Logan Ave</li> <li>Nov 04, 2023</li> </ul>	<ul style="list-style-type: none"> <li>Resident called about other noise mitigation measures</li> <li>Resolution: Work was explained and resident was no longer interested in measures</li> </ul>
<p><b>Access</b></p> <ul style="list-style-type: none"> <li>Eastern Ave</li> <li>Nov 9, 2023</li> </ul>	<ul style="list-style-type: none"> <li>Person experiencing homelessness was potentially residing within rail corridor</li> <li>Resolution: City outreach services contacted to provide support and resources</li> </ul>
<p><b>Vibration and Lights</b></p> <ul style="list-style-type: none"> <li>Paisley Ave</li> <li>Nov 17, 2023</li> </ul>	<ul style="list-style-type: none"> <li>Lights shining into residence, report of vibrations.</li> <li>Resolution: Lights were adjusted to avoid shining outside of work area. The Contractor reviewed the noise and vibration monitoring data during the reported dates/times and determined that while vibrations may have been felt at the property, no exceedances were registered and no damages would be caused to neighboring properties.</li> </ul>
<p><b>Noise</b></p> <ul style="list-style-type: none"> <li>McGee Ave</li> <li>Nov 14, 15, 2023</li> </ul>	<ul style="list-style-type: none"> <li>Noise due to overnight work</li> <li>Resolution: Resident was contacted and informed about work taking place. Potential noise mitigations for resident are being looked into.</li> </ul>

# Complaints and Issues Tracker

Complaint / Issue	Resolution
<p><b>Noise</b></p> <ul style="list-style-type: none"> <li>Dundas St East</li> <li>Nov 15, 2023</li> </ul>	<ul style="list-style-type: none"> <li>Resident reported overnight work happening</li> <li>Resolution: Resident was contacted and informed that work was for removal of road lines.</li> </ul>
<p><b>Flooding</b></p> <ul style="list-style-type: none"> <li>Dundas St E</li> <li>Nov 21, 2023</li> </ul>	<ul style="list-style-type: none"> <li>Flooding under Logan Bridge</li> <li>Resolution: Catch basin cleaned and flooding cleared.</li> </ul>
<p><b>Plugged Drain</b></p> <ul style="list-style-type: none"> <li>First Ave</li> <li>Nov 22, 2023</li> </ul>	<ul style="list-style-type: none"> <li>Resident reported a plugged drain at the end of First Ave.</li> <li>Resolution: Not in relation to DCC work, but they were able to unplug the drain.</li> </ul>
<p><b>Noise and Vibration</b></p> <ul style="list-style-type: none"> <li>Booth Ave</li> <li>Nov 23, 2023</li> </ul>	<ul style="list-style-type: none"> <li>Noise and vibration due to work within rail corridor.</li> <li>Resolution: Contractor reminded to use radio when needed. The contractor reviewed the noise and vibration monitoring data and confirmed no exceedances were observed during the date/time of the complaint. Vibrations may have been felt at the property but were not at a level that would cause damages to adjacent properties.</li> </ul>
<p><b>Access</b></p> <ul style="list-style-type: none"> <li>Queen St E</li> <li>Nov 23, 2023</li> </ul>	<ul style="list-style-type: none"> <li>Business reported not having access to the back of their store for deliveries.</li> <li>Resolution: Delivery times coordinated with contractors to ensure they could get through.</li> </ul>
<p><b>Noise and Vibration</b></p> <ul style="list-style-type: none"> <li>Booth Ave</li> <li>Nov 28, 2023</li> </ul>	<ul style="list-style-type: none"> <li>Noise and vibration due to work within rail corridor.</li> <li>Resolution: Contractor reviewed the noise and vibration monitoring data and confirmed no exceedances were observed during the date/time of the complaint. Vibrations may have been felt at the property but were not at a level that would cause damages to adjacent properties.</li> </ul>
<p><b>Access</b></p> <ul style="list-style-type: none"> <li>Queen St E</li> <li>Nov 29, 2023</li> </ul>	<ul style="list-style-type: none"> <li>Business reported not having access to the back of their store for deliveries due to parked truck.</li> <li>Resolution: Contractor moved truck immediately.</li> </ul>



# 2023 Construction Milestones

## Major achievements for this year include:

- Built seven access roads on the east side of the rail corridor
- Relocated 584m of track
- Excavated 18,101m<sup>3</sup> of soil from the corridor
- Removed 327m of concrete retaining walls
- Relocated and upgraded twelve utility lines
- Demolished the east half of Queen St E, Dundas St E and Logan Ave bridges

**We understand the impacts construction has on communities and want to thank community members, businesses, BIA's and community groups for their patience and feedback over the past year. We look forward to continuing to work with you in 2024!**

**Queen St E Bridge demolition**



**Dundas St E Bridge demolition**

**Logan Ave Bridge demolition**





# Queen Street East Bridge

## Queen Street East Bridge: Completed Work

### Completed activities:

- ✓ The sewer between Strange Street and Dibble Street has been reinforced to increase the sewer's durability and protect the sewer throughout construction.
- ✓ Bell utilities running under Queen Street East have been relocated. Crews used a boring machine to dig a new tunnel beneath the road. The new utilities were then installed within the tunnel. This construction method allowed the Contractor to complete the work without having to trench across the road, which mitigated traffic and pedestrian closures.



Queen Street East from the north sidewalk looking west



# Queen Street East Bridge: Ongoing and Upcoming Work

## Excavation and support works (daytime and overnight):

- Crews are currently excavating the soil on the east side of the bridge to prepare for the demolition of the abutments and piers. As the soil is removed, support structures (lagging and tiebacks) are installed between the piles to hold the other side of the rail corridor in place.

### Hours of work:

- Ongoing for approximately three months
- Monday - Friday between 7 a.m. - 7 p.m., and Sunday - Thursday between 8 p.m. - 5 a.m.

### What to expect:

- No traffic or pedestrian impacts are expected; this work will take place from within the rail corridor.
- Excavators, drill rigs, dump trucks, loaders, and skid steerers will be used to complete this work

## Bridge demolition (daytime, weekday):

- Bridge structures (abutments and piers) on the east side of the bridge will be demolished and removed. Broken concrete will be loaded into dump trucks and hauled off site for disposal. Once demolition work is completed, the Contractor will begin to build the new abutments and piers.

### Hours of work:

- Starting mid-January 2024 until February 2024; Monday - Friday between 7 a.m. - 7 p.m.

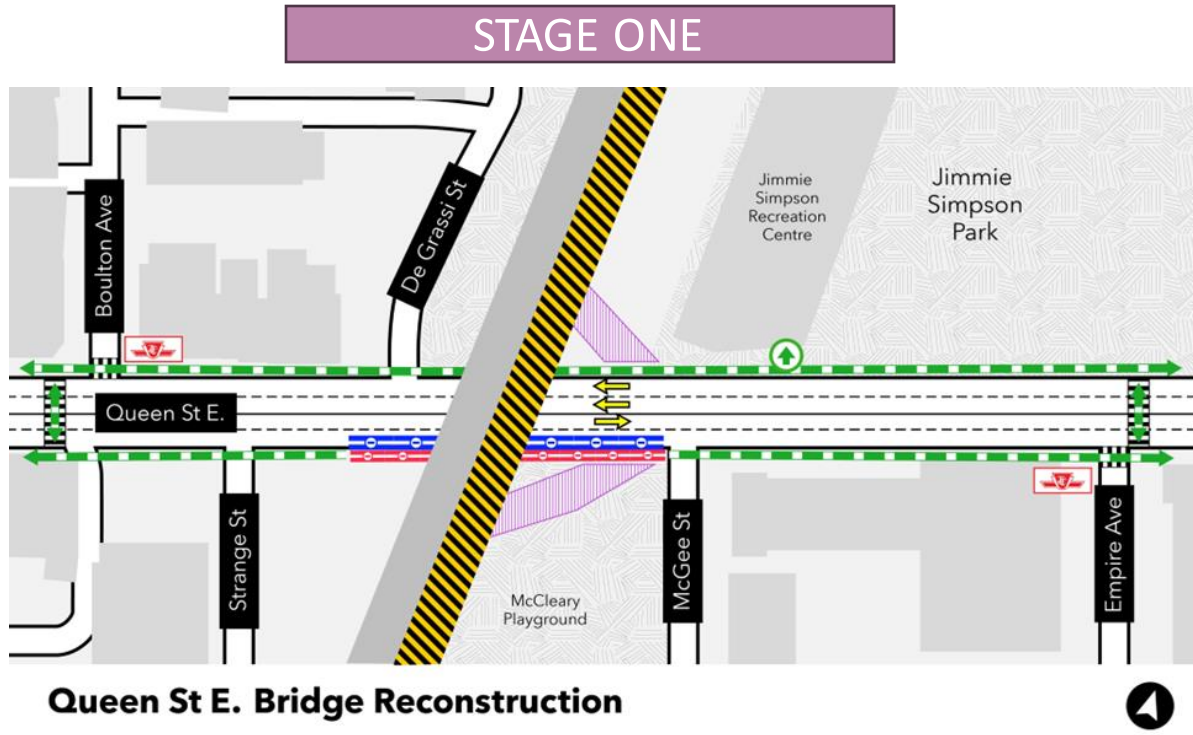
### What to expect:

- For safety, traffic lanes and sidewalks on Queen St. E. will be closed adjacent to the demolition work zone.
- Construction equipment including excavators, jack-hammers, saws, dump trucks, loaders, and skid steerers will be used to complete this work.

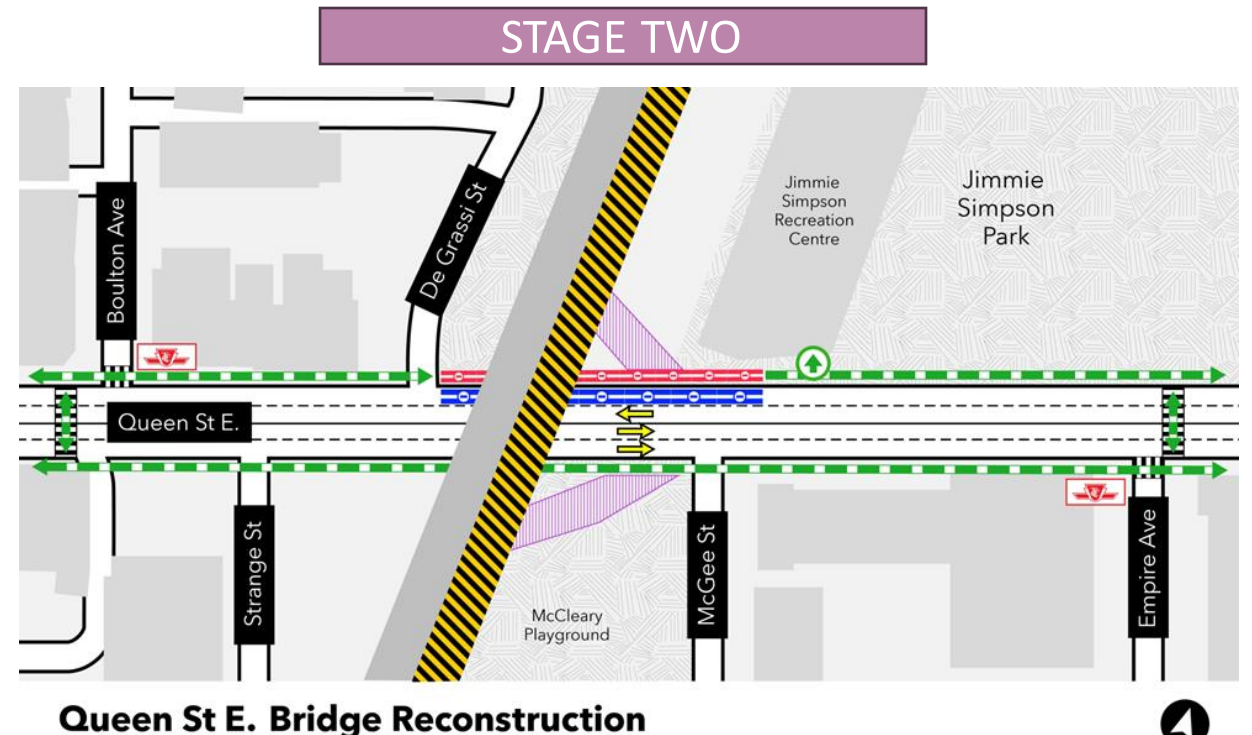


# Traffic Configuration: Queen Street East Bridge Demolition Works

Starting as early as mid January 2024 - February 2024



- Existing rail corridor
- Work zone
- Pedestrian path closure
- Single traffic lane closure
- Lane direction
- Construction access point
- Pedestrian path accessible
- TTC stop
- Jimmie Simpson Centre emergency and maintenance access maintained



- Existing rail corridor
- Work zone
- Pedestrian path closure
- Single traffic lane closure
- Lane direction
- Construction access point
- Pedestrian path accessible
- TTC stop
- Jimmie Simpson Centre emergency and maintenance access maintained





# Utility Pole Installation on Queen Street East

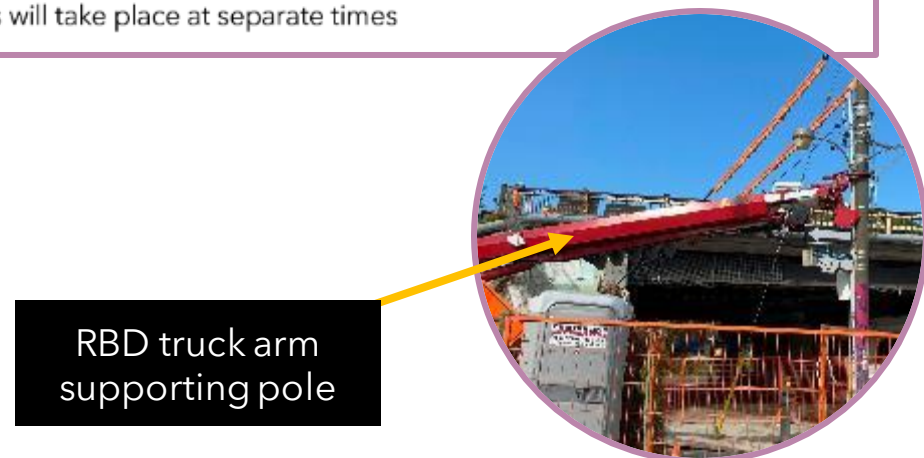
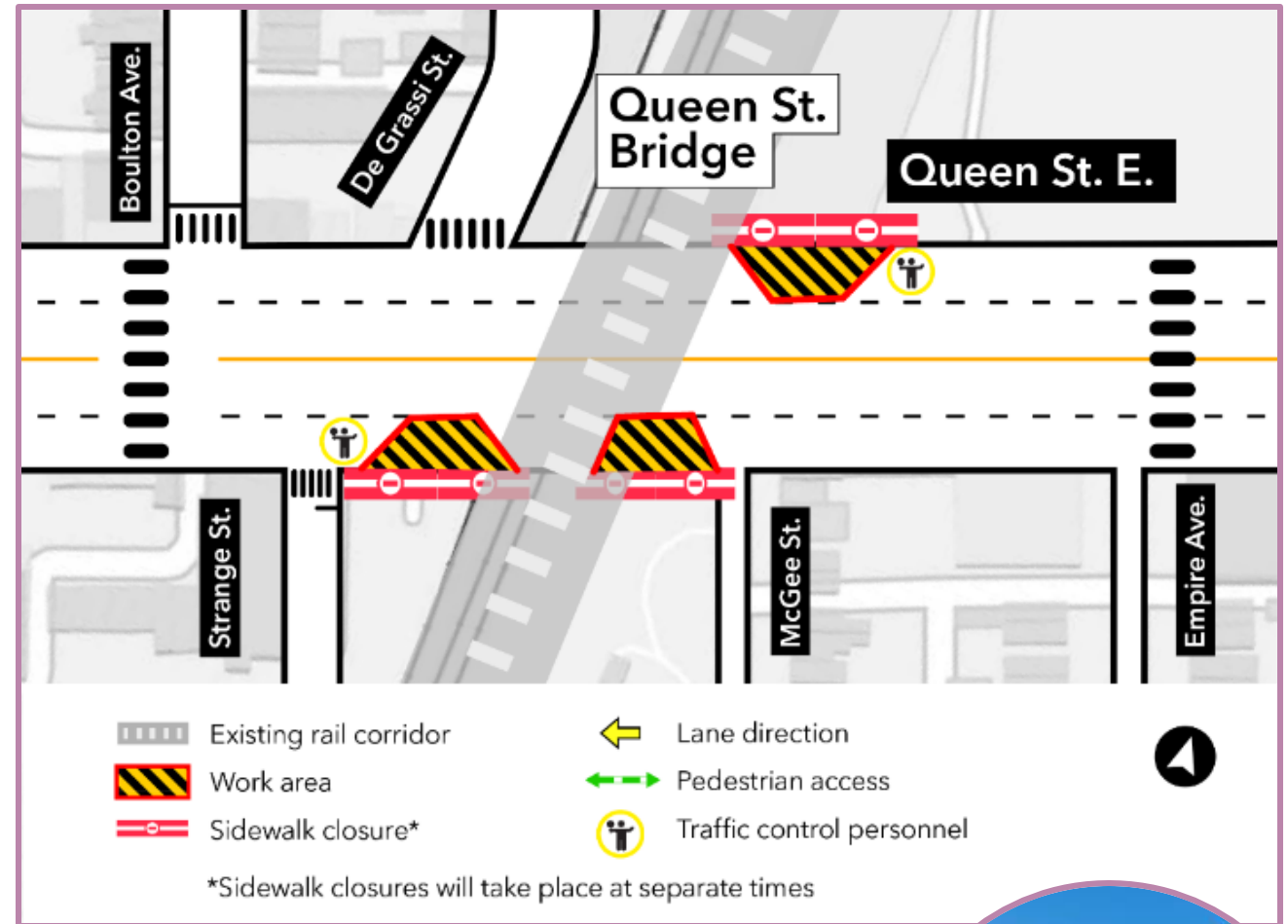
- Installation of five new electrical poles that will power to the TTC 501 Queen streetcar
- Crews will excavate five holes in the sidewalks on the north and south sides of Queen St. E. to create the pole foundations
- The poles will then be installed and surrounded with concrete
- To date, four poles have been installed. The last pole will be installed within the next week.
- Once the poles are completed, TTC will install the new OCS cables - **this work will take place overnight to ensure there are no impacts to streetcar service.**

## Hours of work:

- Ongoing Monday - Friday between 7 a.m. - 7 p.m. For approximately one week

## What to expect:

- Short-term traffic lane and sidewalk closures
- To minimize impact and ensure one sidewalk is always open, the installations will occur at separate times.
- Radial Boom Derrick (RBD) trucks and other support equipment





# Dundas Street East Bridge

## Dundas Street East: Completed Work

### Completed activities:

- ✓ Relocation of Rogers utilities on the north side of Dundas Street East have been completed.
- ✓ The work area for the center pier reconstruction has been established and the existing piers have been removed to make way for the new piers which will be built in early 2024.



Ongoing shoring work



November 15, 2023

# Dundas Street East Bridge - Ongoing and Upcoming Work

## Excavation and support works (daytime and overnight):

- Crews are currently excavating the soil on the east side of the bridge to prepare for the demolition of the abutments and piers. As the soil is removed, support structures (lagging and tiebacks) are installed between the piles to hold the other side of the rail corridor in place.

## Hours of work:

- Ongoing for approximately three months
- Monday - Friday between 7 a.m. - 7 p.m., and Sunday - Thursday between 8 p.m. - 5 a.m.

## What to expect:

- No traffic or pedestrian impacts are expected; this work will take place from within the rail corridor.
- Excavators, drill rigs, dump trucks, loaders, and skid steerers will be used to complete this work

## Centre pier construction (daytime, weekday)

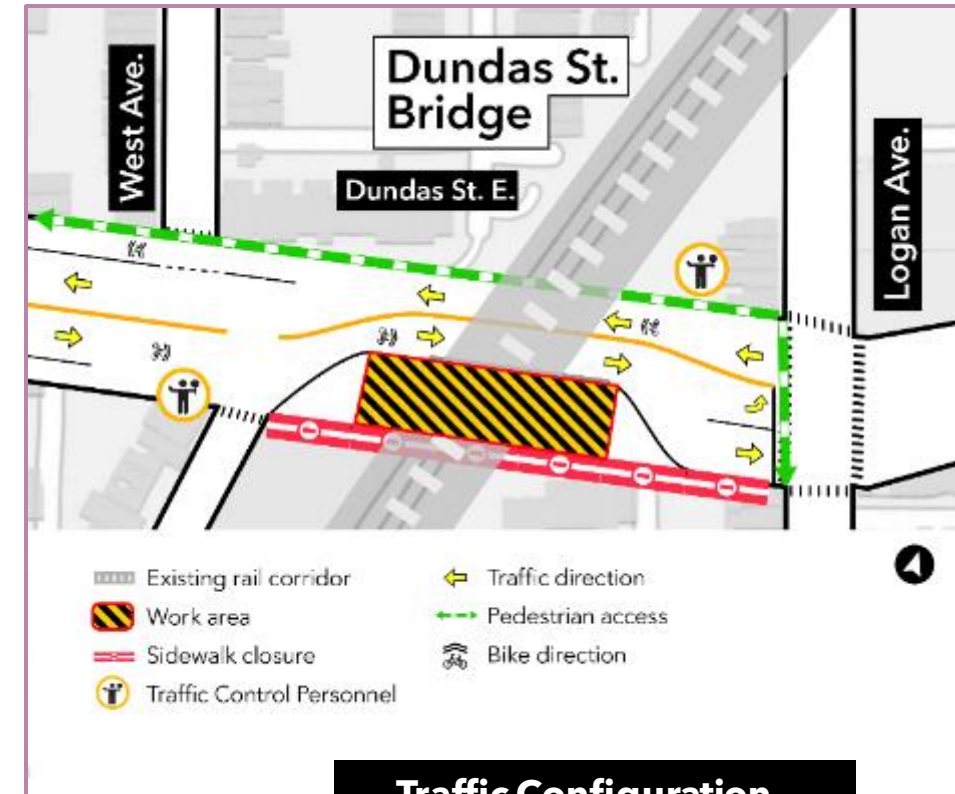
- The existing piers in the centre of the bridge have been removed and construction of the new piers will begin in January 2024.
- A drill rig will be used to dig holes into the ground which will then be filled with rebar and concrete to support the pier footings. The new piers will then be built out of steel and concrete.

## Hours of work:

- Ongoing Monday - Friday; 7 a.m. - 7 p.m. , until February 2024
- In early January 2024, the width of the traffic lanes on Dundas St. E. will be reduced for approximately three weeks to install the pier foundations; a crane and drill rig will be used to complete this work.

## What to expect:

- A work zone will be set up in the middle of Dundas St. E. to safely complete this work.
- The bike lanes on both sides of the street will remain closed. Eastbound and westbound cyclists will need to share the road with vehicles while travelling underneath the bridge
- Noise from construction equipment including a drill rig, crane, excavators, trucks, jack hammers, saws and loaders can be expected



**Traffic Configuration - Pier construction**



# Logan Avenue Bridge



# Logan Avenue Bridge - Ongoing and Upcoming Work

## Excavation and support works (daytime and overnight):

- Crews are currently excavating the soil on the south side of the bridge to prepare for the demolition of the abutments. As the soil is removed, support structures (lagging and tiebacks) are installed between the piles to hold the other side of the rail corridor in place.

## Hours of work:

- Ongoing for approximately three months
- Monday - Friday between 7 a.m. - 7 p.m., and Sunday - Thursday between 8 p.m. - 5 a.m.

## What to expect:

- No traffic or pedestrian impacts are expected; this work will take place from within the rail corridor.
- Excavators, drill rigs, dump trucks, loaders, and skid steerers will be used to complete this work

## Pier construction (daytime, weekday)

- A work zone will be installed in the center of the road to build the new piers for the bridge.
- Construction activities will include excavation, drilling, and concrete works.

## Hours of work:

- Starting in mid-January 2024 for approximately three months
- Monday to Friday, between 7 a.m. - 7 p.m.

## What to expect:

- Noise from construction equipment including excavators, trucks, drills, generators, and concrete trucks can be expected
- Traffic lane reductions and alternating sidewalk closures on Logan Ave.
- Removal of street parking adjacent to the Logan Ave. bridge



Shoring wall at Logan Ave.



Location of future piers

# Logan Avenue Bridge - Ongoing and Upcoming Work

## Concrete saw cutting (daytime, weekday)

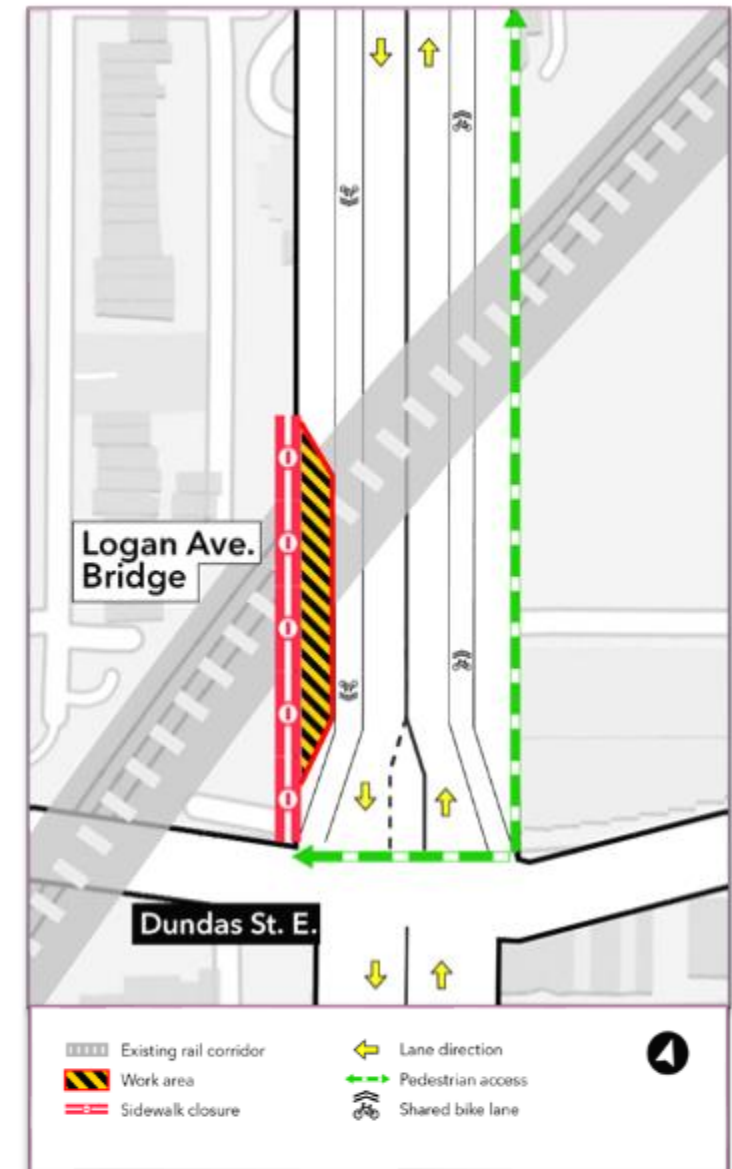
- Starting as early as Wednesday, December 13, 2023, crews will begin to cut and remove concrete at the Logan Avenue bridge.
- Concrete will be cut into pieces using a saw. The cut up pieces of concrete will then be loading into dump trucks using excavators and loaders and hauled off site in dump trucks for disposal.

## Hours of work:

- Starting on Wednesday, December 13 for approximately one week .
- Monday - Friday between 7 a.m. - 5 p.m.

## What to expect:

- The sidewalk on the west side of Logan Avenue will be closed while this work takes place. The sidewalk will reopen after each work day.
- Pedestrians will be directed to use the existing crosswalks at Dundas Street East and First Avenue.
- Excavators, loaders saws, and dump trucks will be used to complete this work.



# Sewer Installation on Logan Avenue

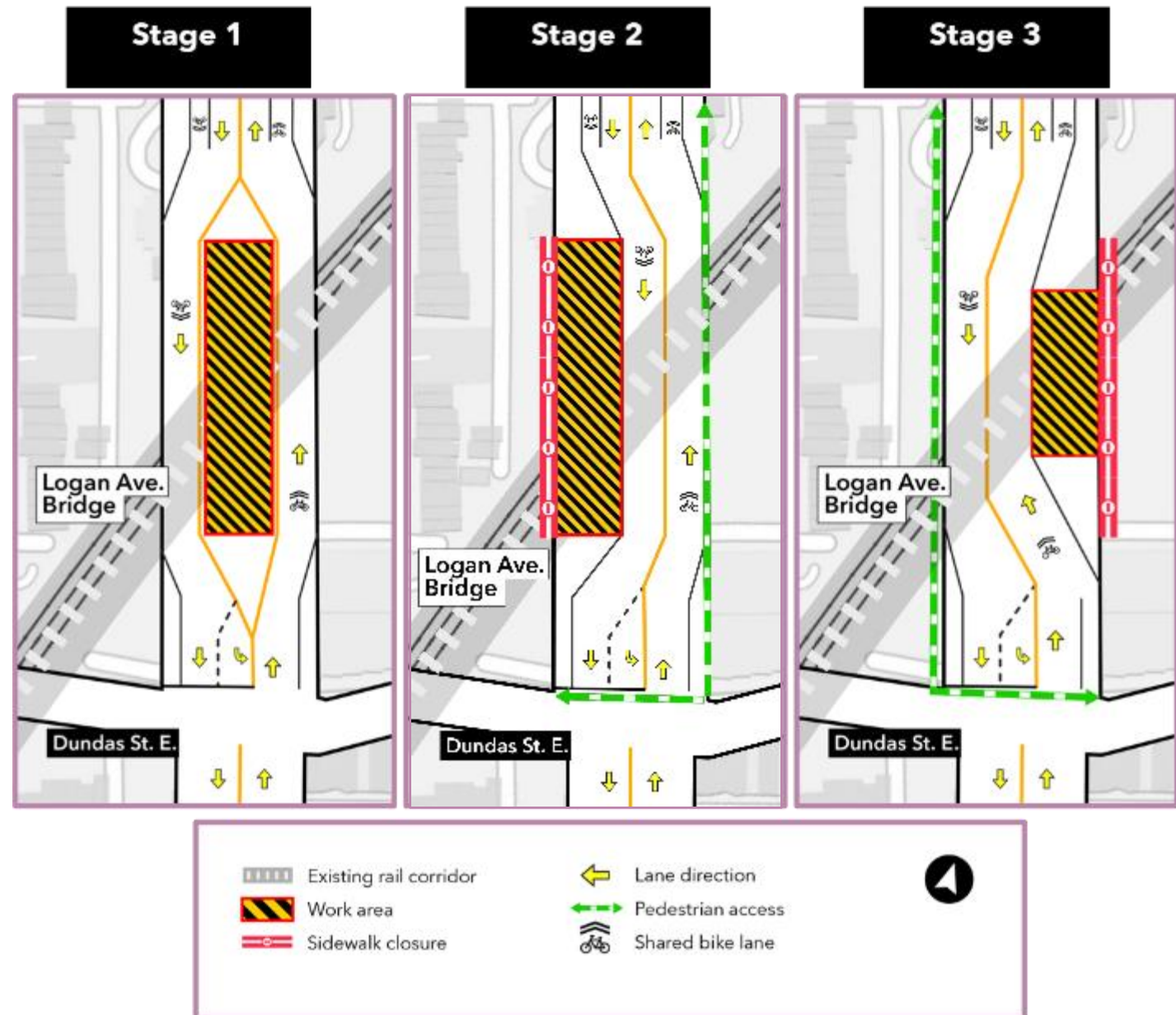
- Crews will install a new sewer beneath the Logan Ave. bridge.
- To minimize traffic impacts, this work will be done in multiple stages.

## Hours of work:

- Starting mid-December 2023 for approximately one month
- Monday - Friday, between 7 a.m. - 7 p.m.

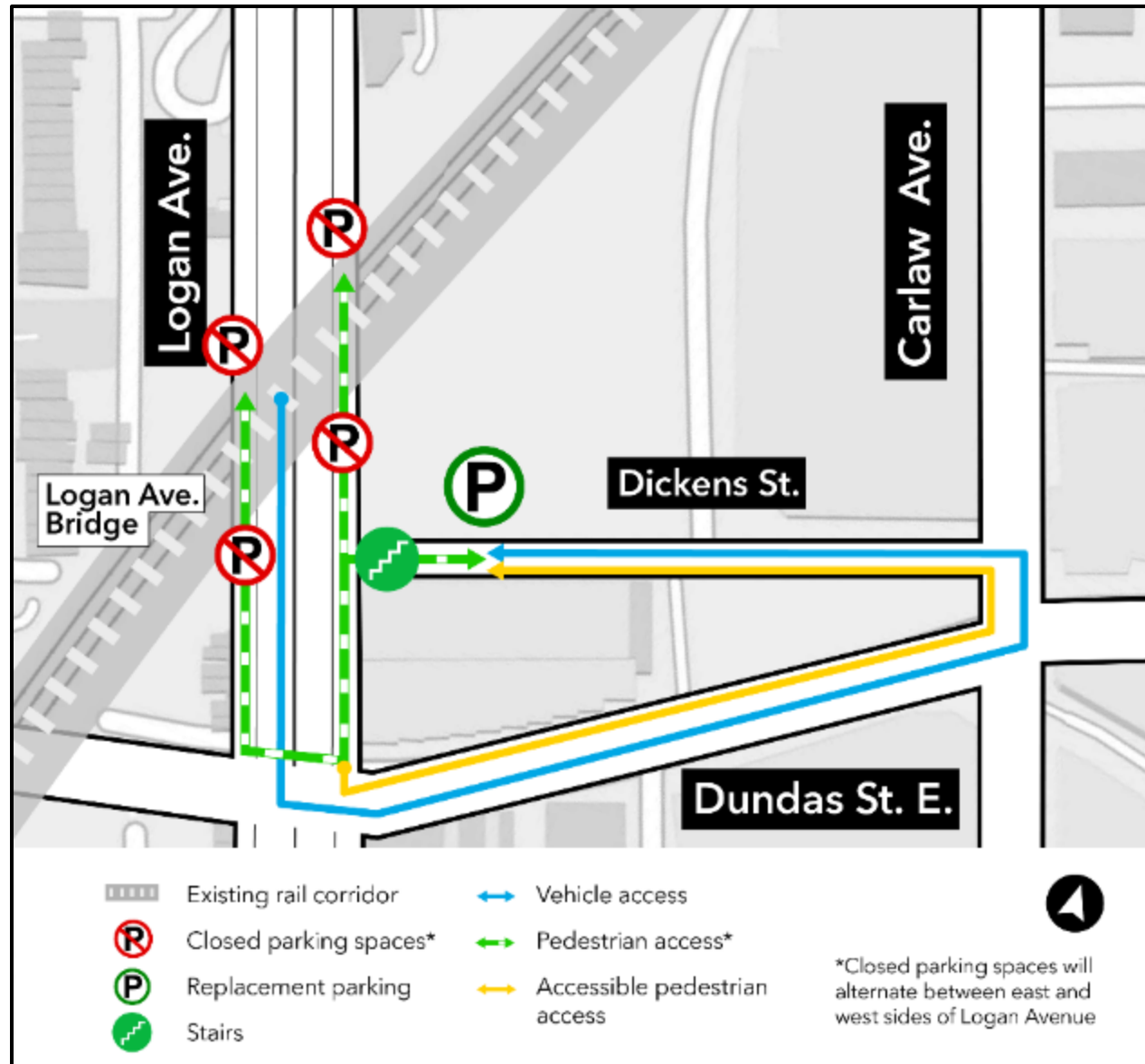
## What to expect:

- The bike lanes on the east and west sides of Logan Ave. will be closed during this work.
- Street parking on Logan Ave. will be restricted between Dundas St. E. up to 444 Logan Ave. Replacement parking will be available at 10 Dickens St.
- Alternating sidewalk closures on the east and west sides of Logan Ave. under the rail bridge. One sidewalk will remain open at all times. Pedestrians will be directed to use the existing crosswalks at Dundas St. E. and First Ave.
- Traffic lanes will shift to the east and west sides of the street as work progresses from one end of the bridge to the other.
- Hydro-vacuum truck, excavators, loaders, rollers, generators, pumps, and delivery trucks will be used to complete this work





## Replacement Parking - 10 Dickens St.



- Approximately twenty new parking spaces have been constructed on Dickens St. to offset displaced street parking on Logan Ave.
- These parking spaces will be free for a maximum three-hour limit (same regulations as street parking on Logan Ave.)
- The parking spaces are currently available to the public and will remain open throughout construction
- Utility work on Logan Ave. is underway. Street parking adjacent to the Logan Ave. bridge will be removed to complete this work.

# In-Corridor Work Update

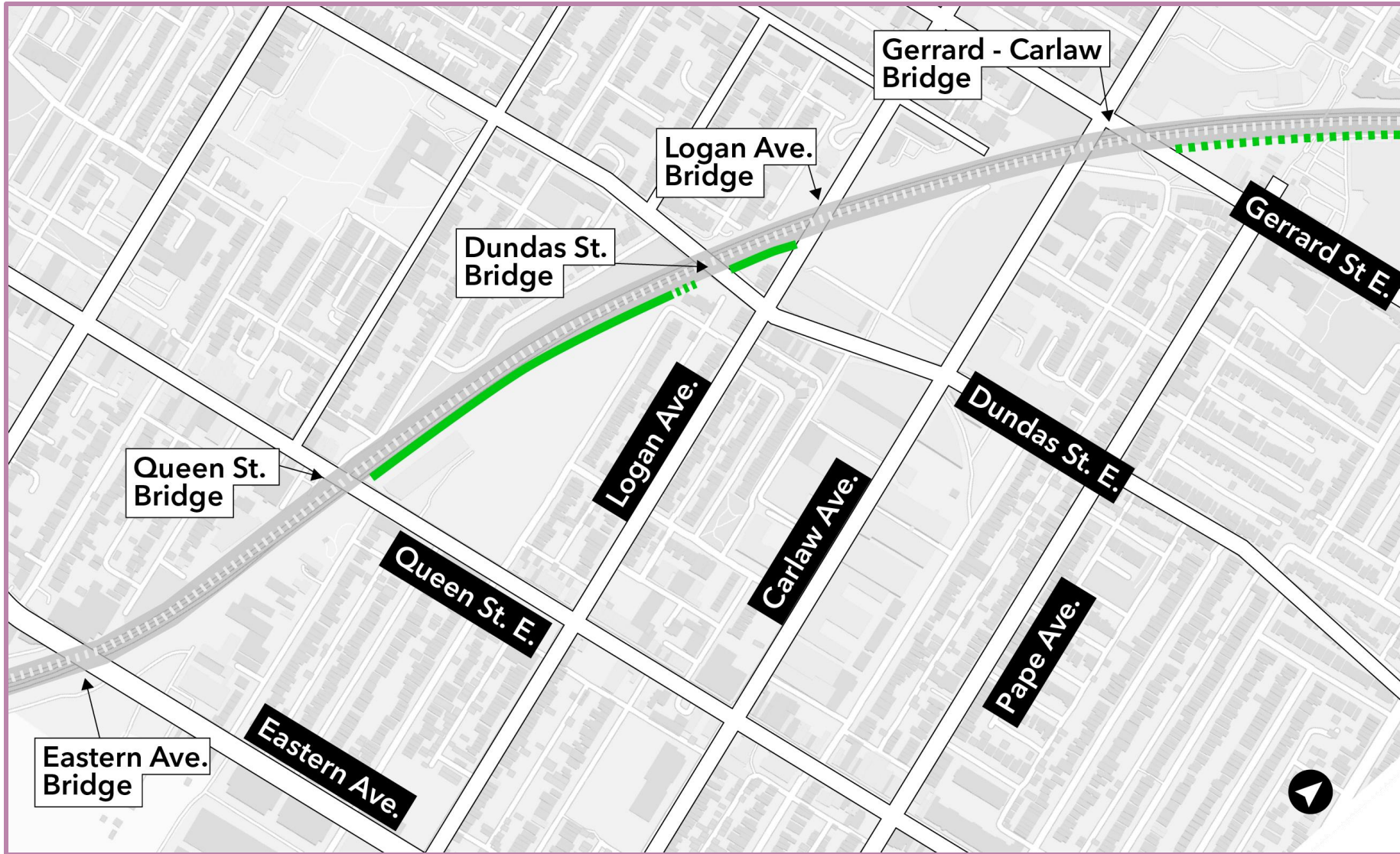
Activity	Description	Date and times
<p><b>Retaining Wall Removals</b></p>	<p>Removal of existing chain link fences and concrete retaining walls along the east side of the rail corridor, including Jimmie Simpson Park, Gerrard LCBO parking lot, and between Dundas and Logan Bridges.</p>	<p>Ongoing until mid-February 2024 on weekdays from 7 a.m. to 7 p.m.</p>
<p><b>Excavation and Structural Support Work</b></p>	<p>Support structures (piles and shoring walls) are being installed throughout the corridor to enable bridge reconstruction and retaining wall and noise barrier installations. Construction activities include excavation, drilling and concrete works.</p>	<ul style="list-style-type: none"> <li>• Ongoing until February 2024</li> <li>• Monday - Friday from 7 a.m. to 7 p.m.</li> <li>• Sunday to Thursday from 8 p.m. to 5 a.m.</li> </ul>
<p><b>T-Wall Construction</b></p>	<p>Installation of pre-cast concrete block retaining walls from Eastern Avenue to Dundas Street East.</p>	<ul style="list-style-type: none"> <li>• Starting in February 2024 for approximately six months.</li> <li>• Monday - Friday from 7 a.m. to 7 p.m.</li> </ul>





Piling progress adjacent to Jimmie Simpson Park



# Progress Map: Retaining Wall Removals



## Retaining Wall

-  Removal completed
-  Upcoming removals

# Construction Mitigation



## Noise Barriers

Where possible, temporary barriers surround loud equipment to reduce noise.



## Advance Notice

Providing notice ahead of construction to give local stakeholders the opportunity to ask questions and plan for the work.



## Site Maintenance

Keeping the site clean and tidy to support the positive appearance of the neighbourhood.



## Noise and Vibration Monitors

Located throughout the rail corridor, these monitors measure noise and vibration to make sure proper levels are maintained.



## Hoarding and Signage

Hoarding provides a protective barrier between the construction site and the public. Signage informs of ongoing and upcoming work, as well as way-finding.



## 24-Hour Support

Providing a 24-hour call number to address complaints and issues.



## Mindful Work Schedules

Work is scheduled to consider community needs, other major projects, and neighbourhood events.



## Good Neighbor Approach

Making sure project staff are considerate of the community during construction.



**Eastern Avenue Bridge  
East Harbour Transit Hub**

# EAST HARBOUR TRANSIT HUB

## EARLY WORKS AND EASTERN AVENUE BRIDGE WORK

- Advanced preparations continue in anticipation of the start of construction in mid-2024\*.
- Early Works may include such things as: establishing the work zone, moving equipment, supplies, and other resources, geo-technical investigations, utility daylighting, and track work.
- Early works are an important component of any construction project. These activities set the groundwork for major construction and reduce the risk of delays to the project.
- With the ongoing demolition and reconstruction of the Eastern Avenue Bridge, a series of lane closures on Eastern Avenue, will be in effect starting mid-October 2023 until October 2026\*, to create a safe working zone for the crews and vehicle traffic.

•Dates are subject to change

# EAST HARBOUR TRANSIT HUB

## UPCOMING CONSTRUCTION ACTIVITIES

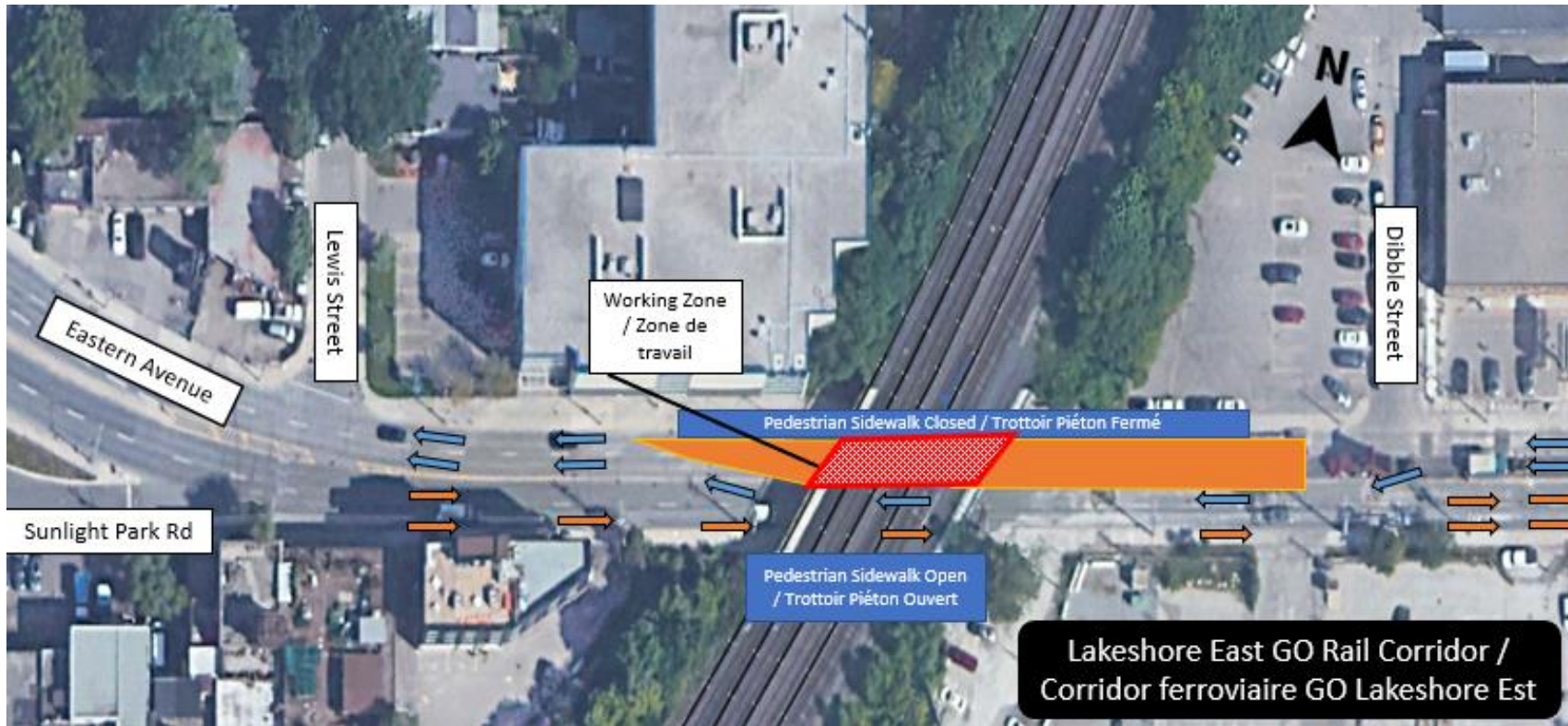
Construction Activity	Traffic Impact	Start Date	End Date	Associated Map
North abutment wall & intermediate column demolition & backfill, ramp installation	Traffic on Eastern Avenue between Dibble Street and Lewis Street will be reduced to a single lane in each direction with North sidewalk closed. The South sidewalk will remain open.	October 30, 2023	November 25, 2023	Figure 1
South abutment wall & intermediate column demolition & backfill, ramp installation	Traffic on Eastern Avenue between Dibble Street and Lewis Street will be reduced to a single lane in each direction with South sidewalk closed. The North sidewalk will remain open	November 25, 2023	December 15, 2023	Figure 2
Reconstruction of Eastern Avenue Bridge (Eastern side)	Traffic on Eastern Avenue between Dibble Street and Lewis Street will be reduced to a single lane in each direction with both sidewalks open. North and South side curb lanes closed.	December 15, 2023	October 30, 2026	Figure 3

- Dates are subject to change



# EAST HARBOUR TRANSIT HUB

FIGURE 1 – MAP SHOWING TWO WESTBOUND LANES AND SIDEWALK CLOSURE



# EAST HARBOUR TRANSIT HUB

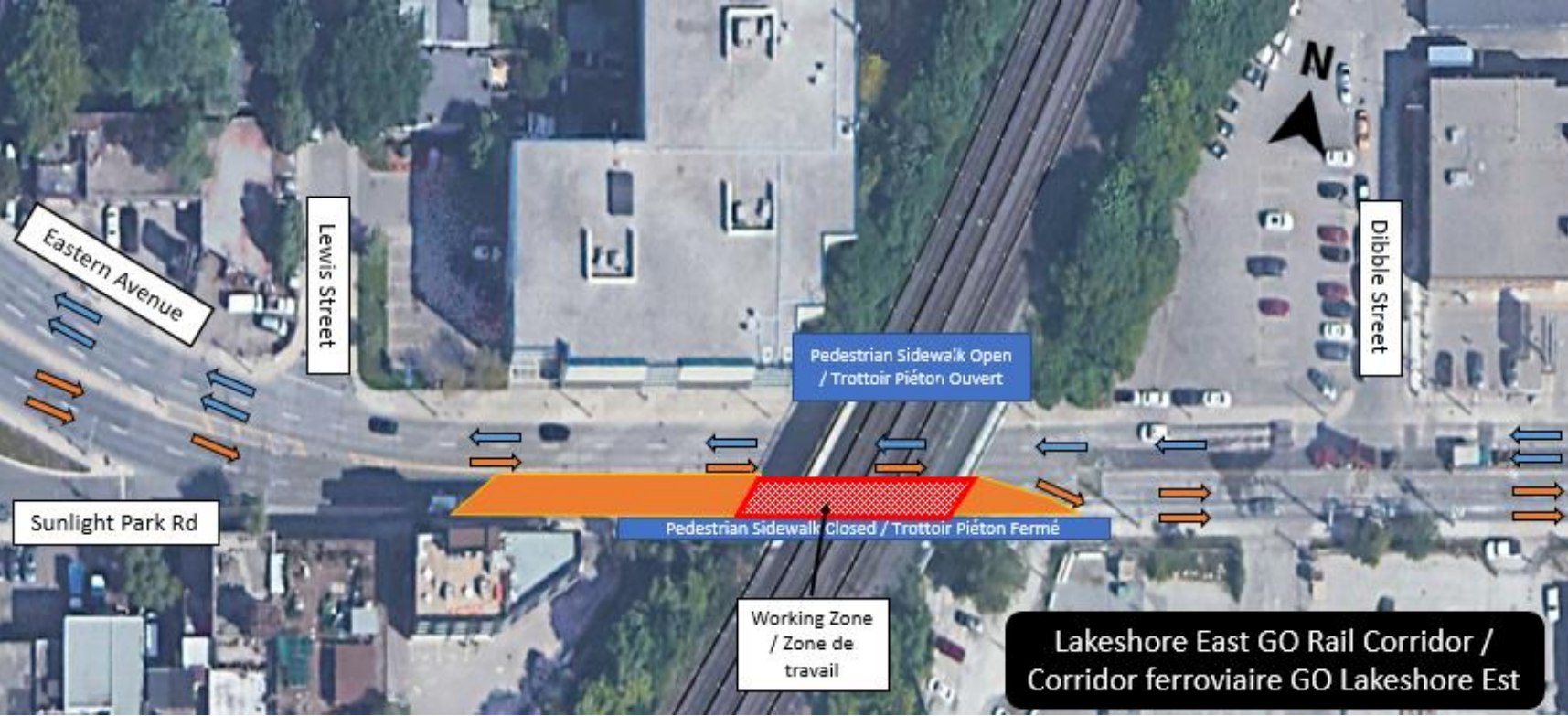
MAP SHOWING SIDEWALK ACCESS





# EAST HARBOUR TRANSIT HUB

FIGURE 2 – MAP SHOWING TWO EASTBOUND LANES AND SIDEWALK CLOSURE



# EAST HARBOUR TRANSIT HUB

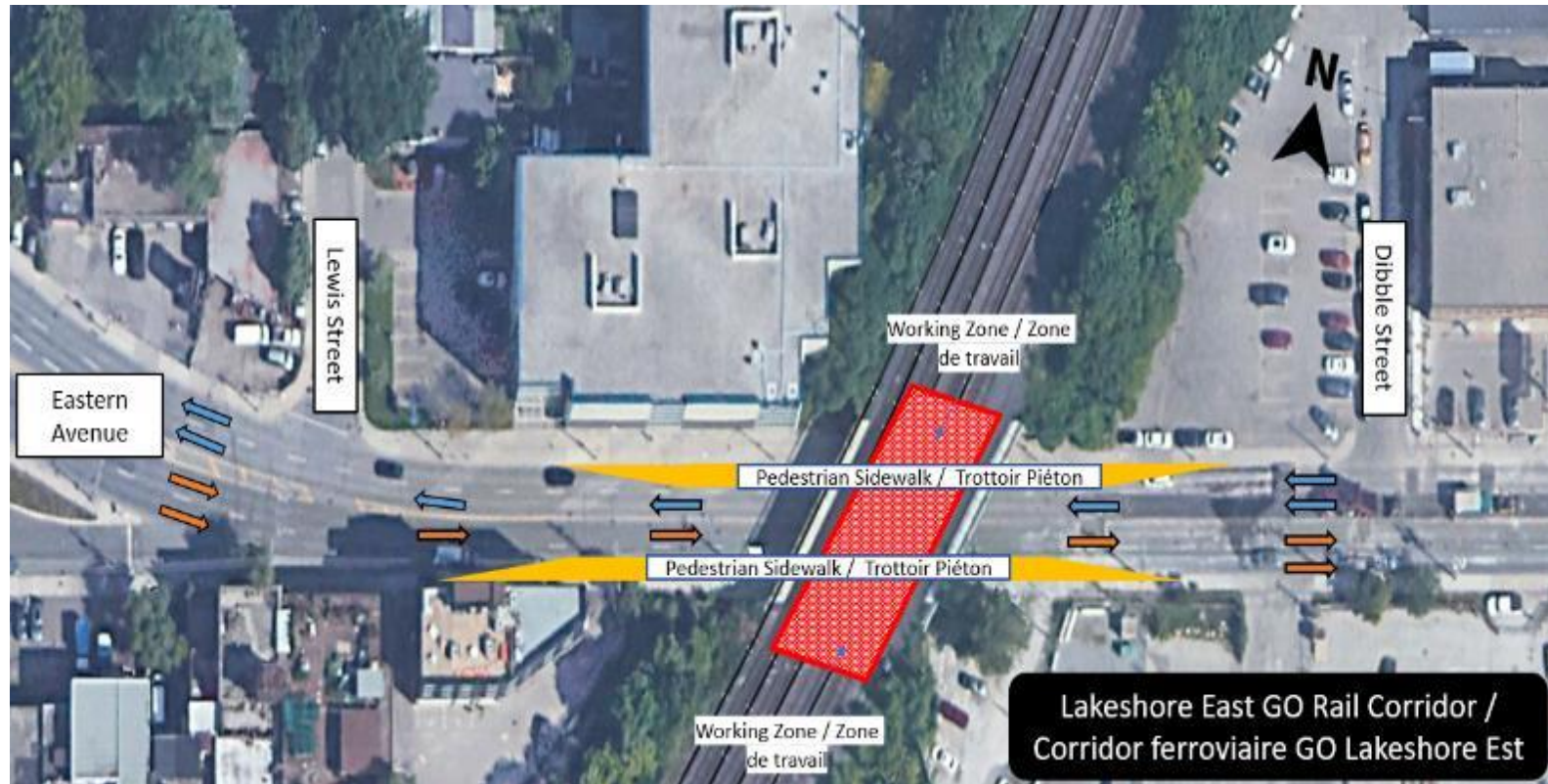
MAP SHOWING SIDEWALK ACCESS





# EAST HARBOUR TRANSIT HUB

FIGURE 3 – MAP SHOWING LONG-TERM CURB LANE CLOSURE AND SIDEWALK ACCESS



# What's Next and Wrap Up

# Community Engagement

**Metrolinx along with construction and project representatives are here for the community throughout the project. Engagement activities include:**

- Pop-ups across the community (parks, events, markets)
- Pop-ups in building lobbies
- In-person and virtual meetings with residences and businesses
- Site tours/walks
- 'Shop Here' digital campaigns, supporting communities impacted by Ontario Line Construction
- News, progress and information shared in the Ontario Line newsletter (currently over 6,600 subscribers)

**Follow us on social media:**

X / Facebook / Instagram @ OntarioLine



Ontario Line Design Competition July 2022, Jimmie Simpson Park



# Contact Us

**Metrolinx will keep the community, residents and businesses informed by providing project updates, seeking input and feedback, and addressing questions and concerns effectively and quickly.**

## Stay connected:

Ontario Line e-newsletter @ [Metrolinx.com/OntarioLine](https://www.metrolinx.com/OntarioLine)

## Questions or comments:

[OntarioLine@metrolinx.com](mailto:OntarioLine@metrolinx.com)  
24/7 call # 416-202-5100

## Follow us on social media:

Twitter / Facebook / Instagram @ OntarioLine



Ontario Line Community Office 770 Queen Street East



# Questions and Answers



# Appendix

# CLC Code of Conduct



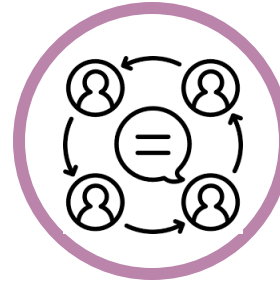
**Participate** fully, openly, and transparently in discussions, while also creating an environment where all members are encouraged to contribute and share their views.



**Participate** in a respectful manner towards other CLC members by using appropriate language.



Keep requested agenda and discussion items within the **mandate and scope** of the **Construction Liaison Committee**.



**Represent** their community's diverse perspectives and interests.



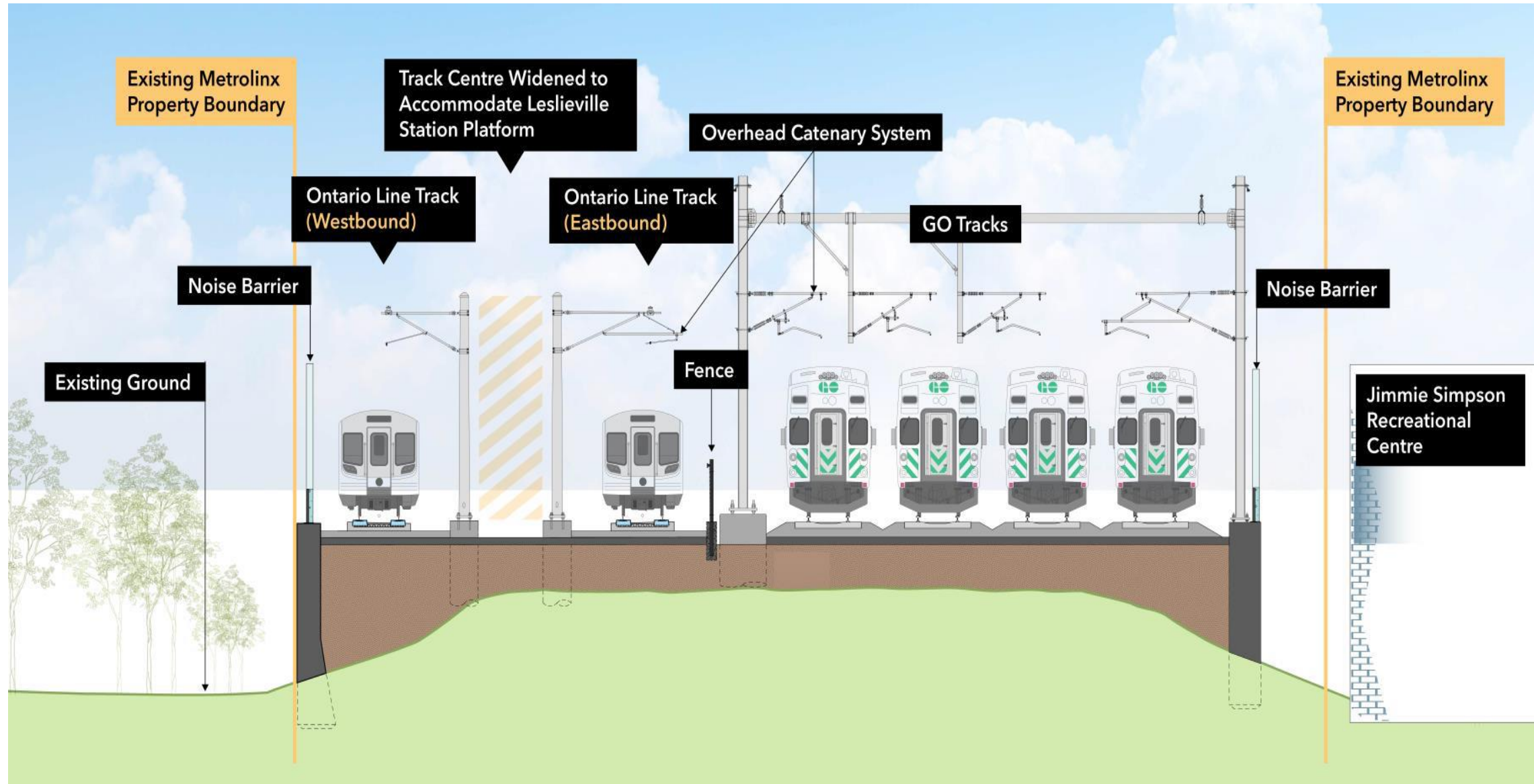
**Maintain** confidentiality of sensitive issues, when requested by participants.



**Commit** to equity, diversity and inclusion by supporting the participation of the whole community regardless of race, gender, class, sexuality, age or ability.



# Summary of Lakeshore East Joint Corridor Early Works



# Construction Liaison Committees (CLC)

Construction Liaison Committees (CLCs) provide open, two-way communication and sharing of information before and during the construction of the Ontario Line project. The CLC will focus on the impacts, issues and areas of concern for resolution related to the Ontario Line construction within the Leslieville/Riverside neighbourhoods. The full Terms of Reference will be shared with the CLC via email.

- The CLC will meet regularly as construction activities get underway
- CLC frequency is flexible, depending on schedules/availability and critical construction work
- Metrolinx will work with stakeholders to develop meeting agendas
- Meetings will last 60-90 minutes, depending on the agenda
- Metrolinx to chair the CLC with support from the project contractor
- Project contractor will participate and lead the construction updates
- Action items/issues/complaints to be logged for resolution

## Construction Liaison Committee (CLC)

### Community representatives



- Elected officials
- Community groups/residents
- Residents' groups/associations
- Tenant representatives
- BIAs
- Business owners

### City of Toronto



### Project team members



- Metrolinx—representatives from Subways Sponsors Office, Design Division, Community Engagement, Project Teams and Contractor/Project Co.

## Who Does What?



A division of CRH Canada Group Inc.

Responsible for construction delivery, establishing the construction schedule, determining construction plans and the care and control of construction sites.



Contribute subject matter expertise regarding City polices, requirements, permits and procedures.

Ensure key City and community interests are noted and addressed through application design reviews and permits.

Work with partners to minimize negative impacts on residents and the environment.

Monitor construction sites for safety and adherence to City standards and bylaws.



Overarching accountability for entire project, strategy and content approvals, building relationships and understanding needs of the community.

Oversight of construction contractors to ensure compliance with contractual obligations, including work schedules, adherence to acceptable noise levels, traffic management plans and permit conditions.

## Construction Liaison Committee Members



### Community Members

- Riverside BIA
- Leslieville BIA
- WoodGreen Community Services
- Lakeshore East Community Advisory Committee
  - Shelley Kline, chair
  - Rosemary Waterston, Vice Chair
  - Tony Whitaker
  - Jennifer Lay
  - Catherine Riddell
  - Stephen Davies
  - Kit Chapman
  - Katherine Mellin
- Fontbonne Ministries
- Saulter Street Brewery

### Community Members cont.

- Bonjour Brioche Bakery
- Tabule Restaurant
- Jimmie Simpson Recreation Centre (City of Toronto)

### Elected Officials (or designate)

- MP Julie Dabrusin
- MPP Peter Tabuns
- Councillor Paula Fletcher



- Transit Expansion Division
- Parks, Forestry and Recreation
- Transportation Services



- Ontario Line Community Engagement
  - Mark Clancy
  - Katiana Moussa
  - Louis Vatr
- Dufferin Construction
- Project Sponsor
- Capital Projects Group
- Traffic and Transportation
- Other project teams as required



# Impact Levels

## Major Impact



**Includes:**

- Major intersection work
- Overnight work
- Transit impacts
- Road closures
- Public parking displacement

## Medium Impact



**Includes:**

- Paving
- Long term traffic lane closures
- Work affecting access to private driveways

## Minor Impact



**Includes:**

- Short-term traffic lane closures
- Temporary pedestrian detours

# Summary of Lakeshore East Joint Corridor Early Works



## Lakeshore East Joint Corridor Early Works Scope of Work Summary



Future station



Utility relocations along Queen Street, Dundas Street, Logan Avenue and the surrounding side streets.



Upgrade to the rail corridor, including excavation of the existing embankment, installation of new drainage infrastructure, installation of pre-cast concrete retaining walls and backfill of the corridor.



Removal of existing and construction of new GO Bridges at Queen Street East, Dundas Street East and Logan Avenue. Construction of two new Ontario Line bridges at Dundas and Logan.



Realignment of the existing GO tracks, construction of a fourth GO track, and preparation works for eastbound and westbound Ontario Line tracks.



Construction of noise barrier walls to mitigate the impact of the railway on adjacent properties.



Construction of retaining walls for construction of the future Ontario Line stations: Riverdale-Leslieville station and Gerrard station.

# Overview | Bridges Redevelopment

