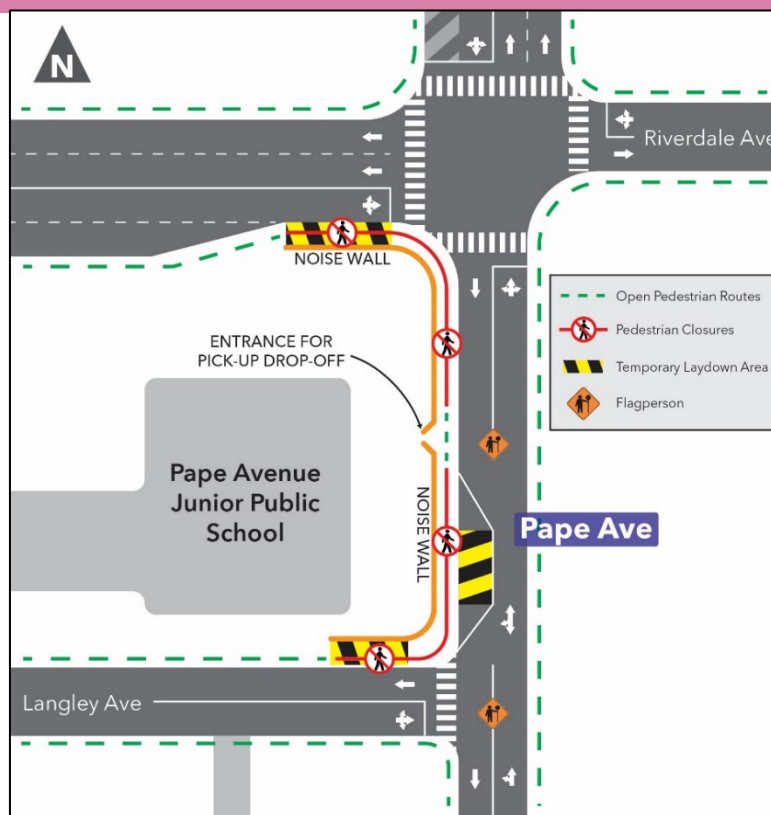


# Noise wall installation at Pape, Riverdale, and Langley Ave.

**Expected start date:** As early as December 23, 2023

**Expected duration:** Five to Six weeks

**Hours of work:** Weekdays from 7:00 a.m. to 7:00 p.m. and Saturday Dec 23.



## What is happening?

- As early as Saturday, December 23, tree pruning will take place for one day between the hours of 7 a.m. to 7 p.m. This work is required to ensure adequate clearance for the noise wall along the pedestrian closure.
- As early as Sunday, December 24, a noise attenuation wall with scaffolding is being installed adjacent to Pape Avenue Junior Public School along the west side of Pape Avenue from Riverdale Ave to Langley Ave, along the south side of Riverdale Ave (20 m) west of Pape Ave, and along the north side of Langley Ave (20 m) west of Pape Ave.

- A noise attenuation wall is being installed to mitigate disruption from upcoming utility relocation works that are required for the new Ontario Line subway.
- A telehandler will be used to lift the material needed for installation and a flatbed truck will be used to transport and deliver material to the construction site.
- During this work, there will be short-term lane closures required for material delivery that can be expected to ensure public safety.

## What to expect

- A telehandler and flatbed truck will be used to complete the work.
- Expect noise from the construction equipment mentioned above.
- During the school winter break (December 25, 2023 to January 5, 2024) work will occur without any breaks between 7:00 a.m. and 7:00 p.m. Please note that work will not occur on statutory holidays.
- After the school winter break period, work will be stopped during school hours from 8:30 a.m. to 9:00 a.m. and 3:05 p.m. to 3:45 p.m. for school pick-up and drop-off.
- The sidewalk where the noise wall is being installed will be closed for the duration of the work and will re-open after installation.
- The student drop-off and pick-up area on Pape Ave will continue to be accessible (as shown on the map above).
- Clear signage will be in place to direct vehicles, pedestrians, and cyclists.
- Traffic barrels, fencing, and barriers will be in place to separate and secure work zones.
- Construction equipment and materials will be properly secured within work zones in the laydown areas.
- Work may be postponed or rescheduled due to unforeseen circumstances.
- For any concerns related to this work, please call us 24/7 at 416-202-5100.

### Contact us:

Call us 24/7 at: [416-202-5100](tel:416-202-5100)

Write to us at: [ontarioline@metrolinx.com](mailto:ontarioline@metrolinx.com)

Find us on Twitter, Facebook, and Instagram:

[@ontarioline](https://twitter.com/ontarioline)

Visit the website: [www.metrolinx.com/ontarioline](http://www.metrolinx.com/ontarioline)

### Visit our community offices:

#### Riverside:

770 Queen St. E, Toronto, ON, M4M 1H4

General hours:

- Mondays, Tuesdays and Fridays: 9 a.m. to 5 p.m.
- Wednesdays and Thursdays: 10 a.m. to 6 p.m.

#### Thorncliffe Park:

East York Town Centre

45 Overlea Blvd., Toronto, ON M4H 1C3

Unit 153 (across from the Rogers store)

General hours

- Monday to Friday: 9 a.m. to 5 p.m.

Disponible en français sur demande. Si vous êtes intéressé, veuillez envoyer un courriel à [ontarioline@metrolinx.com](mailto:ontarioline@metrolinx.com).