

Finch Station Early Works Construction Liaison Committee Meeting #4



April 19, 2023



Yonge North Subway Extension

Finch Station Construction is Ongoing



Hendon Avenue Lane Closure and Temporary Exit

- Starting April 17, Hendon Avenue west lane has been closed
- Temporary exit is now open (Talbot road)
- Hendon/Talbot signalizations activated
- Duration: Until late fall

**TTC Finch Station - West Parking Lot
New Temporary Entrance and Exit**

The map illustrates the layout of the Finch Station West Parking Lot and its connection to the station. Key features include:

- Finch West Lot:** The main parking area, marked with a green 'P'.
- Hendon Rd.:** The road running east-west, with a temporary exit from the parking lot to the west.
- Talbot Rd.:** The road running north-south, with a temporary exit from the station to the west.
- 8650 Yonge St.:** The street running east-west, connecting the parking lot to the station.
- Yonge St.:** The road running north-south, with a temporary entrance from the station to the east.
- Temporary construction laydown area:** A designated area for construction equipment.
- Passenger Pick-up and Drop-off:** A designated area for passengers.

Beginning April 17, 2023, the **temporary entrance only** to Finch Station's - West Parking Lot from Hendon Avenue and the **temporary exit only** onto Talbot Road will be in effect until approximately early 2024 to support Metrolinx's early works for the Yonge North Subway Extension. Additional parking is available at Finch Station's - East Parking Lot off of Yonge Street and Willowdale Avenue.

Additional details available at:
yongesubwayext@metrolinx.com
Metrolinx Community Engagement
Team 416-202-7000

Yonge North Subway Extension



Completed Talbot Road Temporary Exit

Project Mobilization Continues



Recently installed noise and vibration monitoring equipment (21 Hendon)



New signage



Signalization post-installation at Hendon and Talbot

Tail Track and Platform Impact

- Trail track work to begin May 23rd
- 11pm to 3am one subway platform access closed
 - Subway service will not be impacted
 - Both platforms open daily before 11pm
- June 20th trail track work is estimated to end



Bus Shelter Relocation

- Bus shelter to be relocated end of this month
- 35 metres north of existing location
- Clear signage to be installed, in consultation with TTC



Traffic Management Plan



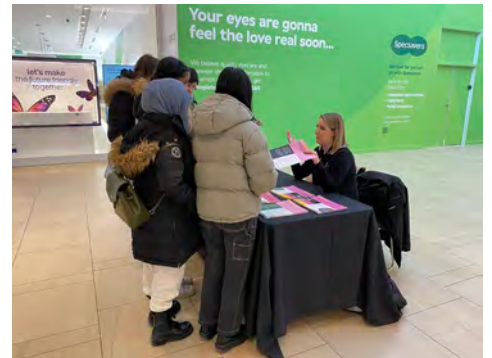
Summary of Traffic Management Plan

- Maintaining access to:
 - TTC parking lots;
 - pick-up & drop-off area;
 - multi-use path; and
 - 5700 Yonge St and other private properties and business
- Minimize impacts to bus operations
- Mitigate potential impacts on neighborhood roads
- Signage and wayfinding to communicate right-of-way impacts
- Signalization of Talbot and Hendon to mitigate auto traffic impacts
- Traffic control personnel as required to ensure safe flow of multi modal traffic
- Public engagement to communicate traffic plans and to confirm requirements

Recent Community Engagements

Our goal is to make sure local neighbourhoods and businesses stay accessible and informed throughout this important project.

- March 22: Virtual Open House to share updates on early works construction at Finch Station
 - ~85 attendees
 - Key topics of interest: traffic management around Finch Station; pedestrian/commuter impacts; broader project questions (e.g. station design; tunnelling technology).
- Other recent and upcoming engagements:
 - April 4: Langstaff Community Centre
 - April 11: Thornhill Community Centre
 - April 13: Richmond Green Library
 - April 18: Bayview Hill Centre
 - April 21: North York Seniors Centre; Hendon Park Clean-up



THANK YOU