

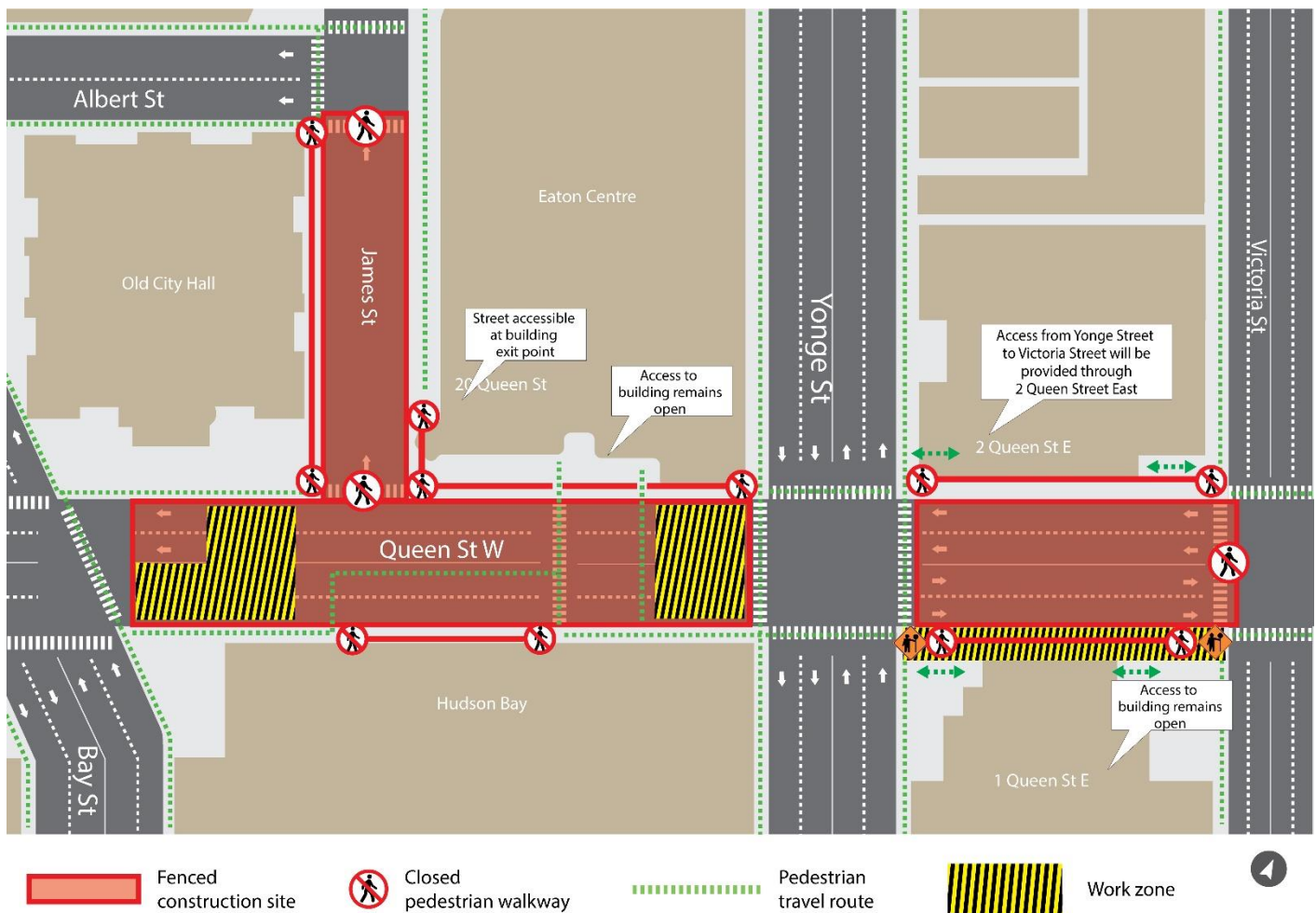
# Utility investigations and monitoring work near Queen Street & Yonge Street

**Expected start date:** January 3, 2024

**Expected end date:** January 8, 2024

**Hours of work:** Monday to Friday, weekdays: from 7 a.m. to 5:30 p.m., weeknights: 10 p.m. to 5 a.m.

## Map of work area:



---

## What is happening?

- In preparation for construction activities at the future Queen Station, crews will be conducting investigative utility works near Queen Street and Yonge Street.
- Construction crews will be surveying and monitoring utilities and conducting sewer inspections within the construction site and in the areas shown in yellow on the map above.
- Crews will drill into the sidewalk to inspect utilities under the sidewalk. Once complete, the drilled areas will be restored.
- During this work, pedestrian access will be temporarily modified: on Queen Street, the north sidewalk from Victoria Street to Yonge Street will be closed but pedestrian access will be maintained through the building at 2 Queen Street.
- The south sidewalk on Queen Street, from Victoria Street to Yonge Street, will be closed. Two Paid Duty Officers will be positioned at the intersection to ensure pedestrian safety. Access to the building at 1 Queen Street will be maintained.
- Crews will also be drilling throughout various locations to install monitoring devices underground.
- Residents and businesses near the work zones will hear noise from heavy equipment including a hydrovac truck, drill rig, and saw cutter.

---

## What to expect

- Work will take place Monday to Friday, during the daytime between 7 a.m. and 5:30 p.m. and overnight, from 10 p.m. to 5 a.m.
- Pedestrian passageways will be maintained with detours in effect - refer to the map above for more information.
- Flag-persons will be present to assist pedestrians on Queen Street West between Yonge Street and Victoria Street.
- Paid Duty Officers will be present to assist and guide pedestrians and traffic.
- Access to all commercial and residential buildings will be maintained.
- TTC subway entrances will be accessible at all times.
- Clear signage will be posted for pedestrians and motorists.
- Equipment will be cleared after every shift.
- All the necessary construction permits have been obtained.
- Work may be postponed or rescheduled due to unforeseen circumstances.
- For more information about upcoming station work please see [metrolinx.com/Ontarioline](https://metrolinx.com/Ontarioline) or sign up for the e-newsletter.

---

## About the Ontario Line

- 15.6-kilometre subway line that will make it faster and easier to travel within Toronto and beyond.
- 15 stops and more than 40 connections to other transit, including GO train, subway, LRT, streetcar and bus lines.
- Less than 30 minutes from one end of the line to the other.
- 28,000 fewer car trips each day.