

# Geotechnical Investigation Works - Oshawa, Ontario

Beginning on January 8 - February, 2024

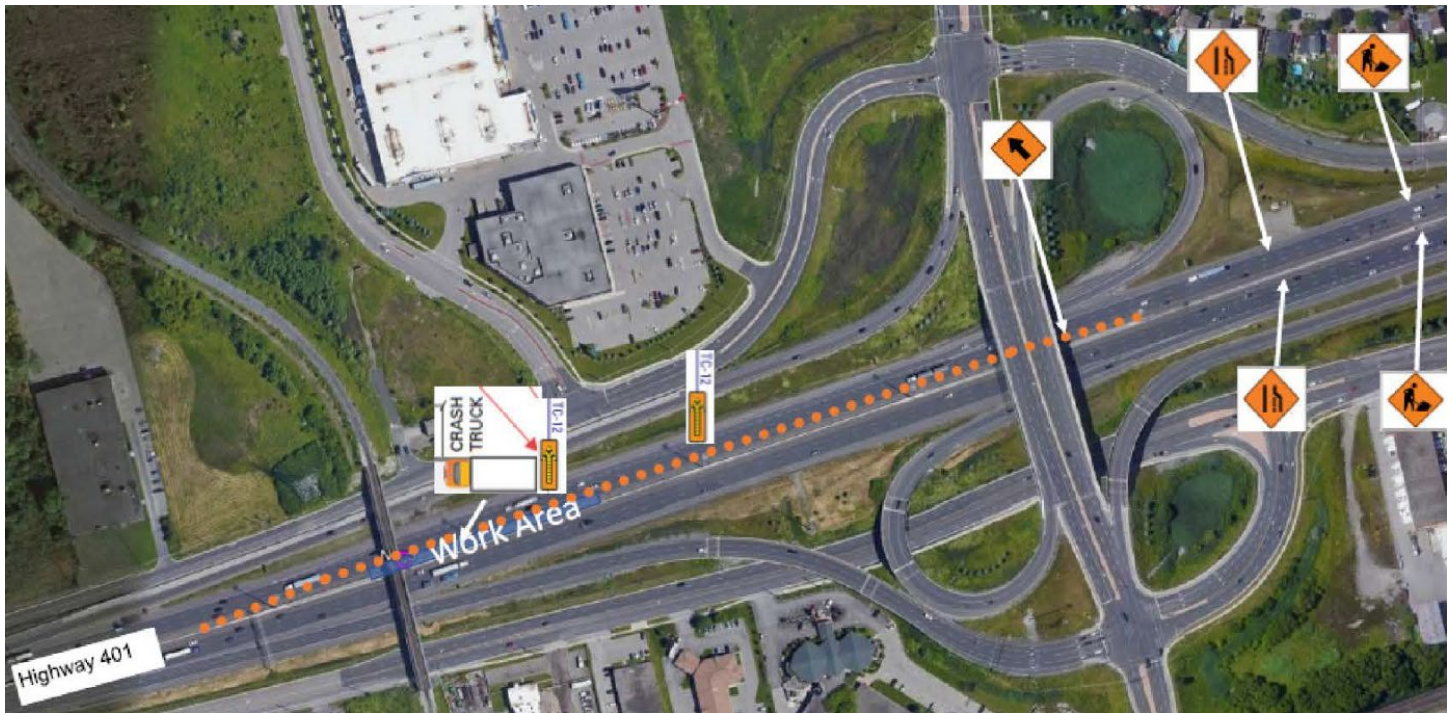


Bloor Street West (Eastbound and Westbound) Work Area and Lane Closure



Highway 401 Eastbound Off Ramp Right-lane Closure





Highway 401 Westbound Left-lane Closure (Stevenson Road)



Highway 401 Westbound Onramp Closure (Stevenson Road)

This construction notice can be translated into a different language upon request by emailing us at [DurhamRegion@metrolinx.com](mailto:DurhamRegion@metrolinx.com).

Cet avis de travaux de construction est disponible en français. Si vous êtes intéressé, veuillez envoyer un courriel à [DurhamRegion@metrolinx.com](mailto:DurhamRegion@metrolinx.com).

**Contact Us:**

- ✉ Write to us at: [DurhamRegion@metrolinx.com](mailto:DurhamRegion@metrolinx.com)
- 🐦 Find us on Twitter [@GOExpansion](https://twitter.com/GOExpansion)
- 🌐 Visit the website: <https://www.metrolinx.com/en/projects-and-programs/go-expansion>





## Highway 401 Westbound On Ramp Closure (Alternative) (Stevenson Road)

### Project Overview

GO service is expanding to serve you better - with more frequent service, more stations, cleaner technology, and more connections. Across the entire network, our goal is to deliver over 10,000 train trips a week - so you won't need a schedule because you know the next train will be coming soon. GO Expansion will transform the GO rail network from a commuter service into an all-day, rapid system.

### What You Need to Know

*To support GO Expansion projects, crews will be mobilizing to complete a geotechnical investigation along Bloor Street and Highway 401, just west of Stevenson Road in Oshawa, Ontario.*

This construction notice can be translated into a different language upon request by emailing us at [DurhamRegion@metrolinx.com](mailto:DurhamRegion@metrolinx.com).

Cet avis de travaux de construction est disponible en français. Si vous êtes intéressé, veuillez envoyer un courriel à [DurhamRegion@metrolinx.com](mailto:DurhamRegion@metrolinx.com).

#### Contact Us:

✉ Write to us at: [DurhamRegion@metrolinx.com](mailto:DurhamRegion@metrolinx.com)

🐦 Find us on Twitter [@GOExpansion](https://twitter.com/GOExpansion)

🌐 Visit the website: <https://www.metrolinx.com/en/projects-and-programs/go-expansion>

## WHAT TO EXPECT

- Crews will be on site to conduct a geotechnical investigation to support GO Expansion projects.
- Crews will be on site beginning January 8, 2024.
- There will be intermittent, temporary lane closures during a 4-week period starting January 8, 2024, as detailed below under Traffic Details.
- Crews will be working at select locations along Bloor Street and Highway 401.

*Please Note: The work start date is tentative and may be rescheduled due to a variety of factors. Please reach out to the Durham Region Community Engagement Team for any questions.*

## HOURS OF WORK

- Crews will be on site along Highway 401 between the hours of 10:00pm and 5:30am.
- Crews will be on site along Bloor Street between the hours of 9:00am and 3:30pm.
- Standard construction noise will remain within the allowable municipal by-law limits.

## TRAFFIC DETAILS

- There will be a temporary, single lane closure on Highway 401 at night, for approximately 1 week.
- There will be a temporary, single lane closure on Bloor Street during the day, for approximately 1 week.
- Temporary lane closures on Highway 401 and Bloor Street will not occur simultaneously.
- Traffic flow in all directions to be maintained during work.
- **This will occur starting January 8, 2024, throughout the month of January to early February but will occur subject to winter weather conditions.**
- **There will be signage setup to notify residents of the road closure and to detours around the works.**

## PEDESTRIAN DETAILS

- There will be minor impact to pedestrians along Bloor Street as crews will be operating along Bloor Street adjacent to the south sidewalk.
- Pedestrian use of the Bloor Street south sidewalk will be maintained throughout the duration of work.

## TRANSIT INFORMATION

- There are no anticipated transit impacts from the upcoming works.

## OTHER INFORMATION

- As we work to improve transit in your community you may have questions or need to get in touch with us. We have a dedicated community engagement team in place to work with residents and businesses in Durham Region.
- Contact us by email at [DurhamRegion@metrolinx.com](mailto:DurhamRegion@metrolinx.com) or by phone at 416-202-3900.

This construction notice can be translated into a different language upon request by emailing us at [DurhamRegion@metrolinx.com](mailto:DurhamRegion@metrolinx.com).

Cet avis de travaux de construction est disponible en français. Si vous êtes intéressé, veuillez envoyer un courriel à [DurhamRegion@metrolinx.com](mailto:DurhamRegion@metrolinx.com).

### Contact Us:

- ✉ Write to us at: [DurhamRegion@metrolinx.com](mailto:DurhamRegion@metrolinx.com)
- 🐦 Find us on Twitter [@GOExpansion](https://twitter.com/GOExpansion)
- 🌐 Visit the website: <https://www.metrolinx.com/en/projects-and-programs/go-expansion>