

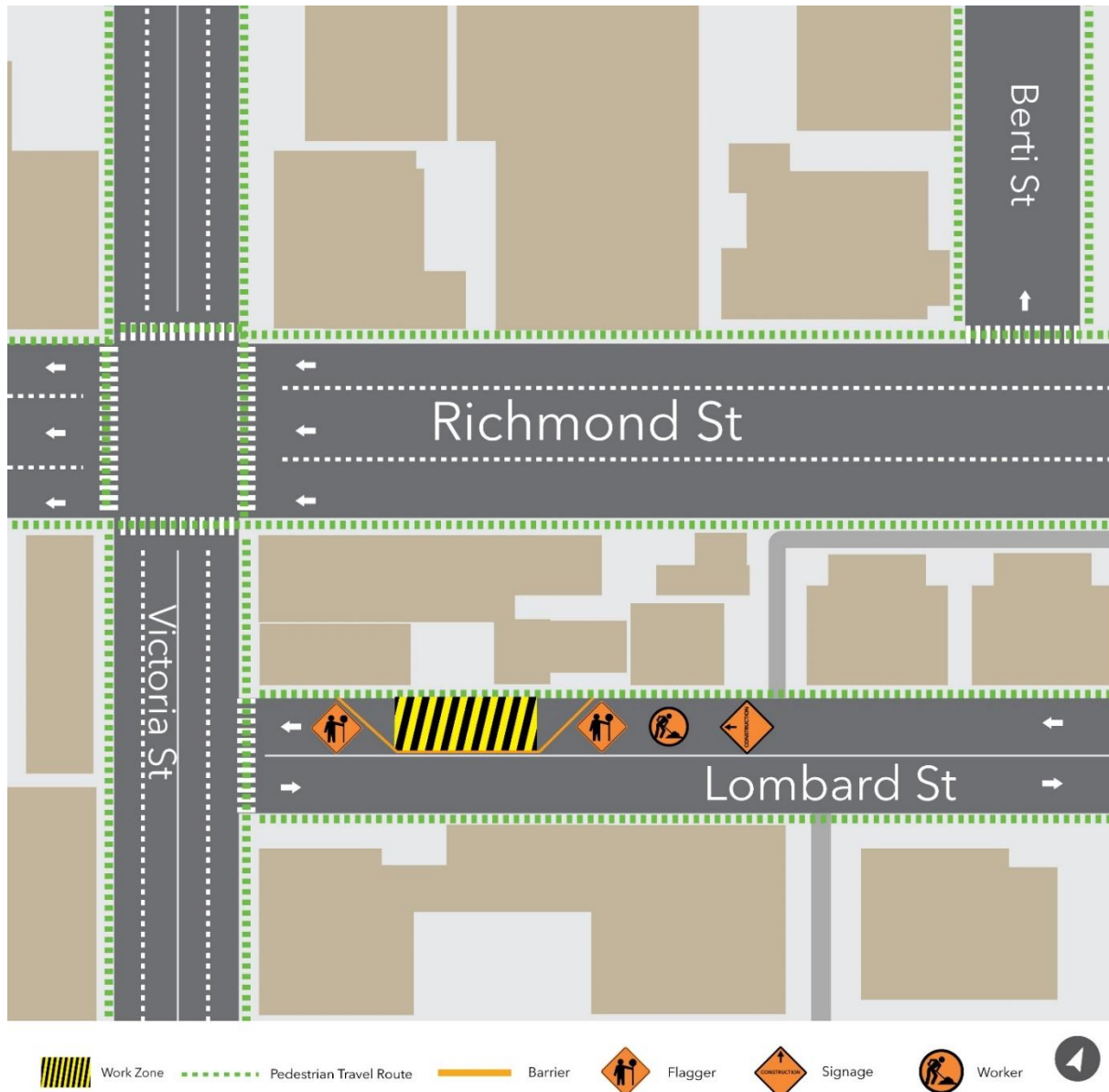
# Monitoring device installation and maintenance on Lombard Street

**Expected start date:** As early as January 18, 2024.

**Duration:** Up to one (1) month.

**Hours of work:** Weekdays from 7 a.m. to 7 p.m.

## Map of work area:



## What is happening?

- Work crews will be conducting investigative utility works and drilling (in the area shown in yellow on the map above) on Lombard Street.
- They will be installing and performing maintenance on an underground monitoring device.
- Drilling is necessary to test and visualize the utilities and ground conditions under the street for future construction of the Ontario Line subway tunnels at Queen Station.

---

## What to expect

- Work will take place during the day on weekdays, between 7 a.m. to 7 p.m. Crews are expected to be onsite prior to 7 a.m. to set up equipment.
- Community members can expect to hear noise from work equipment, specifically hydrovac trucks and saw cutting tools. Crews will take measures to minimize noise impacts wherever possible.
- All closures for work are temporary and intermittent: area will only be closed while crews are surveying the specific area. The area will be returned to public use upon completion of the monitoring device installation.

### Lombard Street impacts (as noted in the map above):

- A portion of the westbound lane on Lombard Street will be closed.
- Loading zones in this area will be maintained.
- Sidewalks will remain open for pedestrian travel throughout the duration of work. Safety barriers will be in place to ensure safe access is maintained.
- Flag-persons will be present to guide traffic at the corner of Lombard Street and Victoria Street.
- Signage will be posted advising of the lane and sidewalk restrictions.

**Note:** Access may resume prior to 7 p.m. if works are completed ahead of schedule.

- After each work shift, each area will be securely covered and marked for safety until workers return or the work is complete.
- The areas will be returned to public use upon completion of the monitoring device installation.
- All the necessary construction permits have been obtained.
- Work may be postponed or rescheduled due to unforeseen circumstances.
- For more information about upcoming station work please see [metrolinx.com/Ontarioline](https://metrolinx.com/Ontarioline) or sign up for the e-newsletter.

---

## About the Ontario Line

- 15.6-kilometre subway line that will make it faster and easier to travel within Toronto and beyond.
- 15 stops and more than 40 connections to other transit, including GO train, subway, LRT, streetcar and bus lines.
- Less than 30 minutes from one end of the line to the other.
- 28,000 fewer car trips each day.

### Contact us:

Call us 24/7 at: [416-202-5100](tel:416-202-5100)

Write to us at: [ontarioline@metrolinx.com](mailto:ontarioline@metrolinx.com)

Find us on X, Facebook, and Instagram: [@ontarioline](#)

Visit the website: [www.metrolinx.com/ontarioline](https://www.metrolinx.com/ontarioline)

### Visit our community office:

770 Queen Street East (near Queen & Broadview)

General hours:

- Mondays, Tuesdays, and Fridays: 9:00 a.m. to 5:00 p.m.
- Wednesdays and Thursdays: 10:00 a.m. to 6:00 p.m.

Disponible en français sur demande. Si vous êtes intéressé, veuillez envoyer un courriel à [ontarioline@metrolinx.com](mailto:ontarioline@metrolinx.com).