

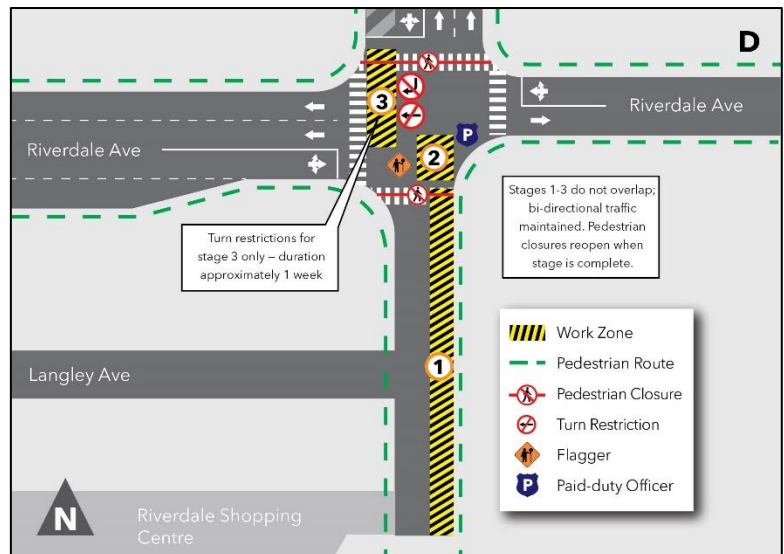
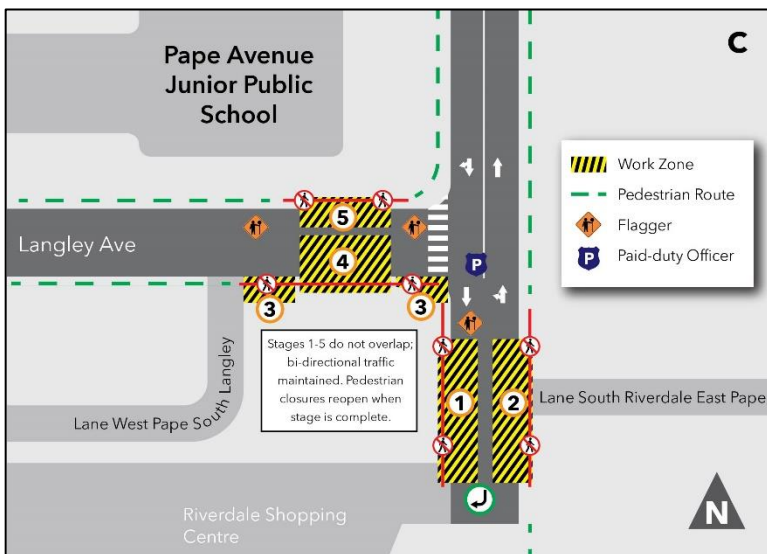
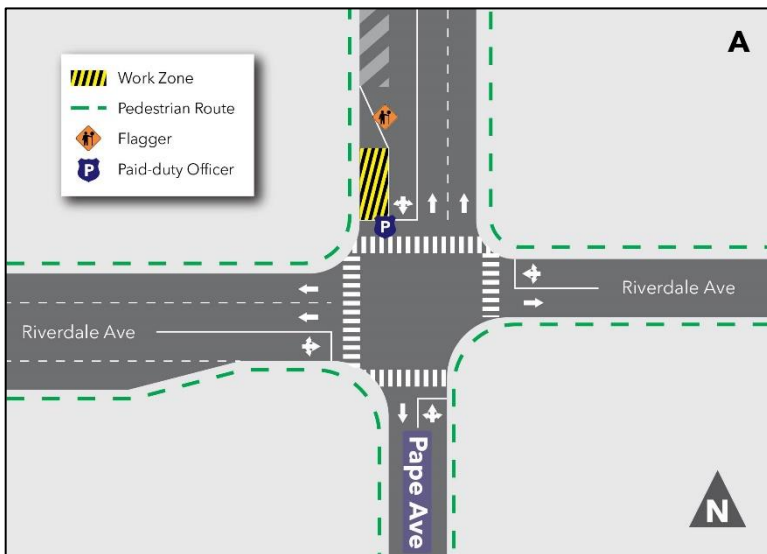
# Relocation of Toronto Hydro underground electrical utilities Pape Ave. - Riverdale Ave. to south of Langlely Ave.

**Scheduled start date:** As early as January 24, 2024

**Duration:** Approximately six (6) months

**Days:** Monday - Sunday

**Timing:** Weekdays 7:00 a.m. - 11:00 p.m. and Weekends 9:00 a.m. - 7:00 p.m.



Information as January 18, 2024



## What is Happening?

- Toronto Hydro will be relocating its utilities along Pape Avenue from Riverdale Ave, to south of Langlely Avenue to make room for future Ontario Line construction.
- The work will begin with the excavation and rebuilding of an existing chamber at the northwest corner of Pape and Riverdale Ave (see map A).
- A second new chamber will also be constructed south of Langlely near the Riverdale Shopping Centre entrance (see map B).
- Once the Pape and Riverdale chamber is complete, Toronto Hydro will be excavating the road and digging a trench to install new cables on Pape between Riverdale and south of Langlely, and on Langlely at Pape. The trenches will be backfilled (See map C and D).
- The work at Pape and Riverdale will begin as early as Wednesday, January 24, 2024.
- Metrolinx will continue its noise and vibration monitoring program which includes a newly installed noise wall at Pape Avenue Junior School. Noise monitors have been installed on the noise wall and provide real-time data which is monitored and responded to as required.

- All activities listed above will take approximately six (6) months to complete.

## What to Expect:

### Construction:

- The work will be done using excavators and hydrovac trucks. This is required to safely protect the existing utility infrastructure.
- Residents and businesses near the sites will hear noise caused by work equipment, specifically trucks and excavators. Crews will take measures to minimize noise impacts wherever possible.
- Work may be delayed due to weather conditions or unforeseen circumstances.
- Access to residences will always be maintained.

### Traffic and Pedestrian Details:

- There will be temporary pedestrian detours around the location where immediate work is taking place. Traffic control personnel and a Paid Duty Officer will be on-site to ensure pedestrian safety.
- When the trenching and excavation work starts, alternating sidewalk closures will be required on Pape Ave. between Riverdale Ave. and the Riverdale Shopping Centre. There will also be sidewalk closures on Langley Ave. west of Pape Ave. One sidewalk will remain open at all times.
- Vehicle access to the Riverdale Shopping Centre turning right from Pape will be closed when work starts south of Langley Ave. Advance signage will be in place to advise of this closure. Traffic will be redirected to Riverdale Ave.
- When required, access from Pape Ave to Langley Ave will be controlled by a traffic control person.

### Safety:

- A paid duty officer and/or traffic control personnel will be on-site managing traffic and pedestrian flow.
- Signage will be posted around the site to direct pedestrians.
- Equipment may be left on site but will be properly secured and stored to ensure safety.
- Dust will be mitigated by misting, sweeping and /or the use of a hydrovac vehicle.
- After-hours security will be onsite between 7 p.m. and 7 a.m. to ensure equipment and materials are not tampered with.

## About the project

- 15.6-kilometre subway line that will make it faster and easier to travel within Toronto and beyond.
- 15 stops and more than 40 connections to other transit, including GO train, subway, LRT, streetcar and bus lines.
- Less than 30 minutes from one end of the line to the other.
- 28,000 fewer car trips each day.

#### Contact us:

Call us 24/7 at: [416-202-5100](tel:416-202-5100)

Write to us at: [ontarioline@metrolinx.com](mailto:ontarioline@metrolinx.com)

Find us on X, Facebook, and Instagram: [@ontarioline](https://www.instagram.com/ontarioline)

Visit the website: [www.metrolinx.com/ontarioline](http://www.metrolinx.com/ontarioline)

#### Visit our community office:

770 Queen Street East (near Queen & Broadview)

General hours:

Mondays, Tuesdays, and Fridays: 9:00 a.m. to 5:00 p.m.

Wednesdays and Thursdays: 10:00 a.m. to 6:00 p.m.