

Lakeshore West Rail Corridor

Lakeshore West Infrastructure Improvements Project: **Long Branch GO Station**

January 2024



Land Acknowledgement

Let us take a moment to acknowledge we are on lands that have been, and continue to be, home to many Indigenous Peoples including the Anishnabeg, the Haudenosaunee and the Huron-Wendat peoples.

We are all Treaty people. Many of us have come here as settlers, as immigrants or involuntarily as part of the trans-Atlantic slave trade, in this generation, or generations past.

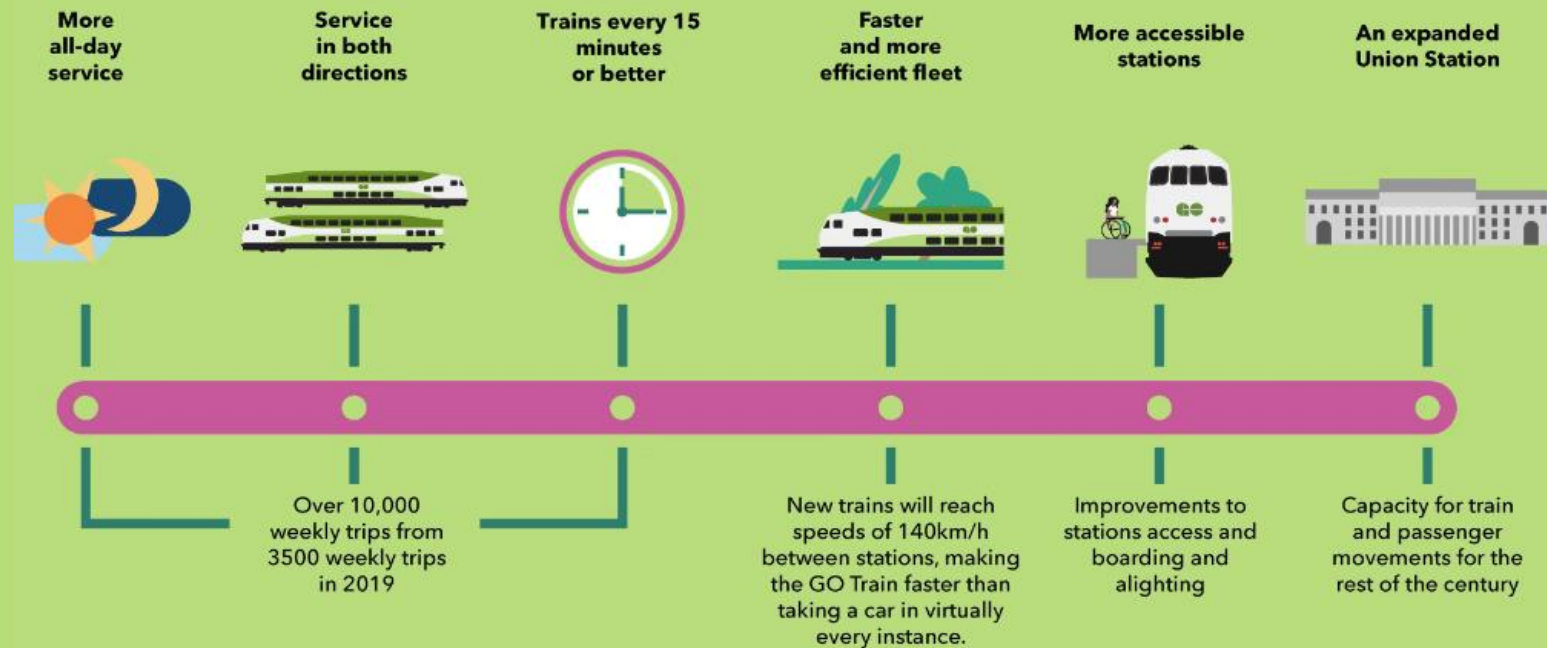
We acknowledge the historic and continued impacts of colonization and the need to work towards meaningful reconciliation with the original caretakers of this land.

We acknowledge that Metrolinx operates on territories and lands covered by many treaties that affirm and value the rights of Indigenous communities, Nations and Peoples.

We understand the importance of working towards reconciliation with the original caretakers of this land. At Metrolinx, we will conduct business in a manner that is built on a foundation of trust, respect and collaboration.

Introduction to GO Expansion

- Metrolinx's GO Expansion program is delivering more GO service across the network, including trains every 15-minutes or better on the Lakeshore West Rail Corridor.
- To support GO Expansion, we are upgrading the rail network and our GO stations to enable more frequent and fully accessible service. This includes accessibility and amenity improvements to Toronto's Long Branch GO Station.



Long Branch GO Station

Existing station location and layout



Existing Long Branch GO Station

TTC Long Branch Loop

301 501 508
110B 301L 501L 507

5 23

New station layout and features

1. West station building
2. East station building
3. Long Branch loop
4. Main parking area
5. Passenger pick-up and drop-off
6. West tunnel
7. East tunnel
8. Covered stairway to Edgeware Drive
9. Bicycle storage

LEGEND

- Vertical circulation
- TTC, MiWay
- GO Transit
- PUDO pick-up/drop-off
- Parking
- Plaza
- Vehicular access routes
- Service access
- Pedestrian access routes
- Tunnel access routes
- Multi-Use Path



Layout and access routes

Summary of Improvements

- New east station building with barrier-free washrooms and waiting area, with elevator and stair connection to new east tunnel
- New west station building with elevator and stair connection to new west tunnel
- Two new accessible pedestrian tunnels
- Platform improvements including heated platform shelters



Summary of Improvements (cont.)

- Revisions to the parking lot, including pedestrian walkways, a passenger drop off area, bike lanes and bike shelters
- Motion censored lights, which are dimmed when not in use
- Solar panels on top of south building
- Project is targeting LEED Silver certification
- Improved connection to transit bus loop



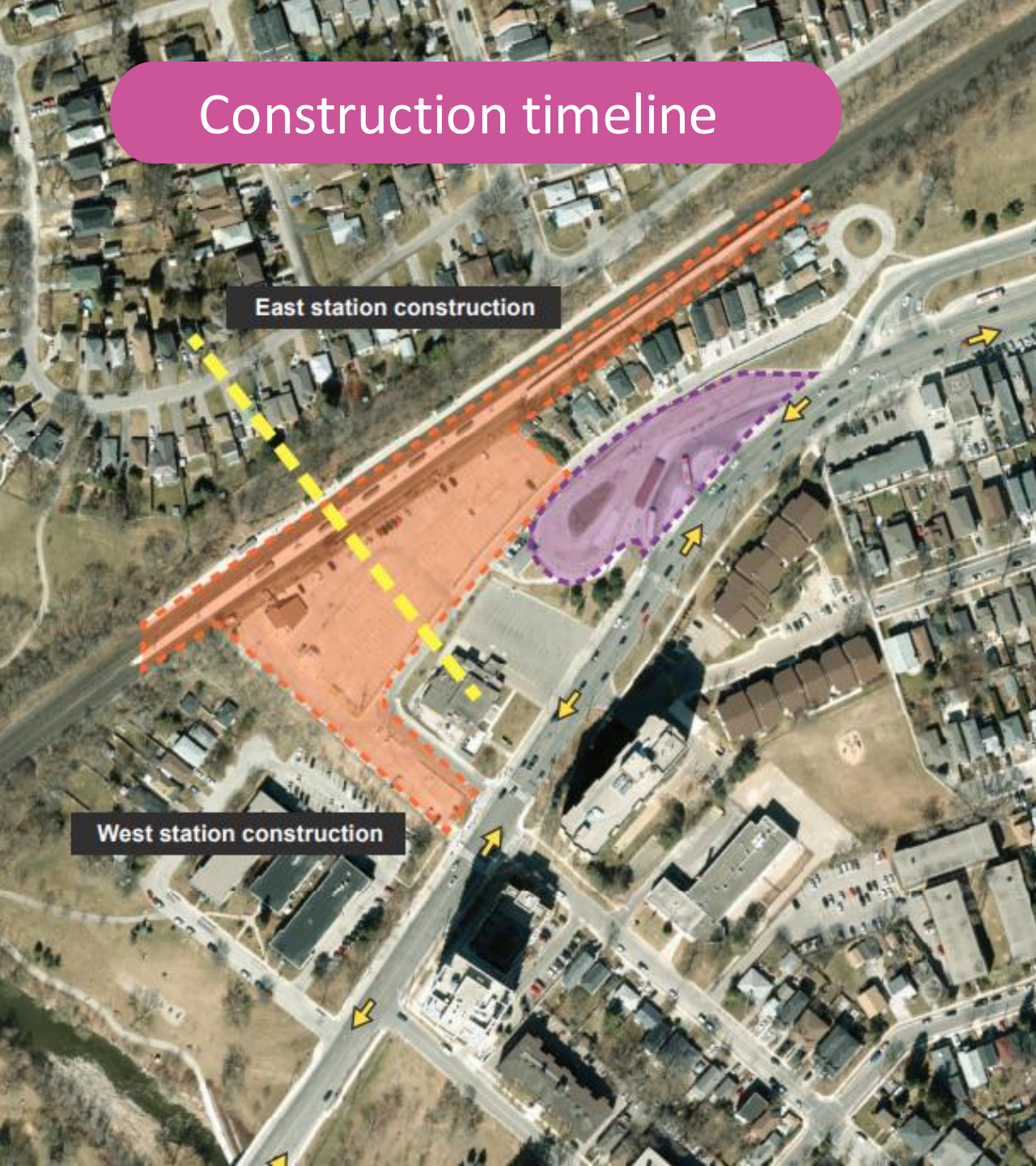
New platforms, canopies and heated shelters



View from Edgware Drive (new covered stairway)



Construction timeline



Please note dates could change

2023

Early Works

Site mobilization

Dry utilities relocation

Hydro, gas, communications

Wet utilities relocation

Water, sewerage, drainage

2024

East platform closure and demolition

(Late 2023/ Early 2024)

East station building, tunnel and platform construction starts (Spring)

2025

East station building complete

(Late Summer)

2026

East platforms and tunnel complete

(Late Spring)

2027

West station building, tunnel and platform construction starts (Spring)

2028

West station building, tunnel and platform construction complete (Fall)

Commissioning and testing

(Fall/Winter)

