

Ontario Line Subway

Osgoode Construction Liaison Committee - Meeting #6

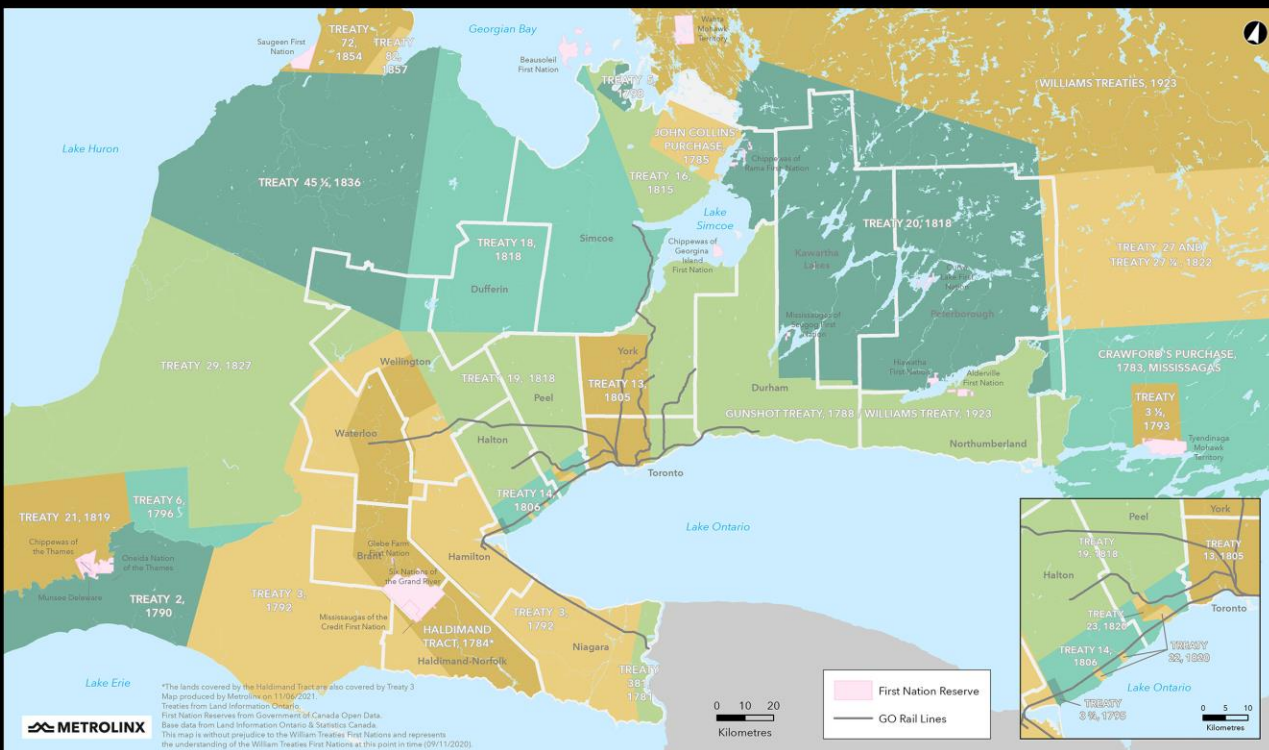
January 24, 2024

 METROLINX



Land Acknowledgment

Treaties and Reserves in the Greater Golden Horseshoe



Let us take a moment to acknowledge we are on lands that have been, and continue to be, home to many Indigenous Peoples including the Anishnabeg, the Haudenosaunee and the Huron-Wendat peoples.

We are all Treaty people. Many of us have come here as settlers, as immigrants or involuntarily as part of the trans-Atlantic slave trade, in this generation, or generations past.

We acknowledge the historic and continued impacts of colonization and the need to work towards meaningful reconciliation with the original caretakers of this land.

We acknowledge that Metrolinx operates on territories and lands covered by many treaties that affirm and value the rights of Indigenous communities, Nations and Peoples.

We understand the importance of working towards reconciliation with the original caretakers of this land. At Metrolinx, we will conduct business in a manner that is built on a foundation of trust, respect and collaboration.

Agenda

Welcome (5 minutes)

- Introductions
- Land Acknowledgement
- Safety Moment

Presentation (20 minutes)

- Construction Updates

Discussion (15 minutes)

- Station Design

Feedback and Discussion (15 minutes)



Safety Moment

Carbon monoxide awareness

Carbon monoxide is an odorless, colourless gas that often goes undetected. It's important to know how to prevent carbon monoxide poisoning and what to do if you suspect a leak.

This "invisible killer" is produced by burning fuel in cars or trucks, small engines, stoves, lanterns, grills, fireplaces, gas ranges, portable generators or furnaces. Winter can be a prime time for carbon monoxide poisoning as people turn on their heating systems and mistakenly warm their cars in their garages. When the gas builds up in enclosed spaces, people or animals who breathe it can be poisoned. Ventilation does not guarantee safety.

It is recommended that you install a battery-operated or battery backup carbon monoxide detector in the hallway near each sleeping area in your home. Check or replace the battery when you change the time on your clocks each spring and fall and replace the detector every five years.

Symptoms

Symptom severity varies depending on the level of carbon monoxide and duration of exposure. Mild symptoms sometimes are mistaken for flu with a headache as a low to moderate poisoning and vomiting and loss of consciousness as one of the symptoms of high-level poisoning.

Upon detection of a carbon monoxide leak, alert everyone on the premises and move outside to fresh air immediately. Call 9-1-1 and the gas company. Do not re-enter the premises until cleared by the fire department.



Construction Update

Work in Progress

- North Entrance
 - Site preparation (Future north station + laydown sites)
 - Heritage fence and stone removal
- South Entrance
 - Heritage façade retention
 - Interior abatement ongoing
- University Avenue Median
 - South African War Memorial – preservation and removal



Photo Credit: Metrolinx Project Team - January 23, 2024

Work in Progress: North

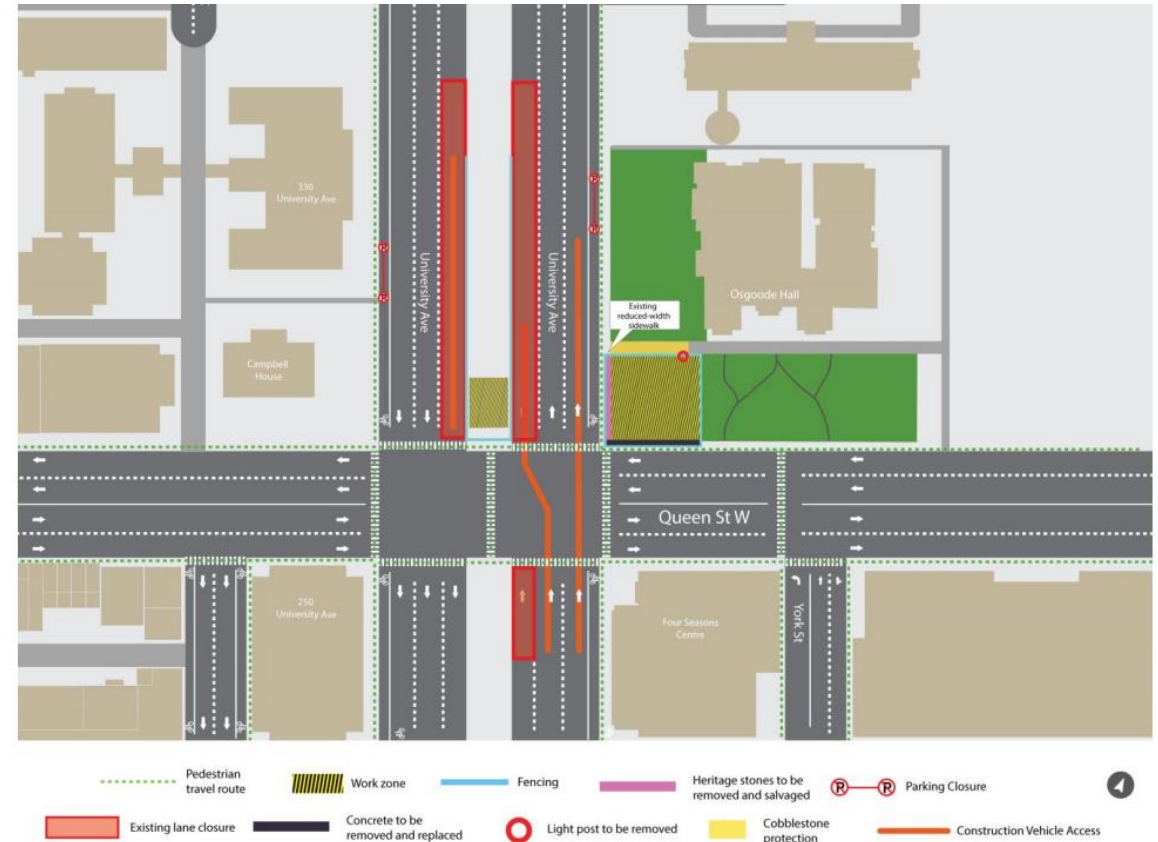
Site Preparation (North) + Heritage Works

Hours of work:

- Various daytime from 7:00 a.m. to 7:00 p.m. and occasional overnight 7:00 p.m. to 5:00 a.m.

Work includes:

- Removal of heritage stones & fence
- Preparation of north construction site



Work in Progress: North

Site Preparation (North) + Heritage Fence Removal at Osgoode Hall



Photo Credit: Metrolinx Project Team - January 23, 2024



Photo Credit: Metrolinx Project Team - January 23, 2024

Work in Progress: North

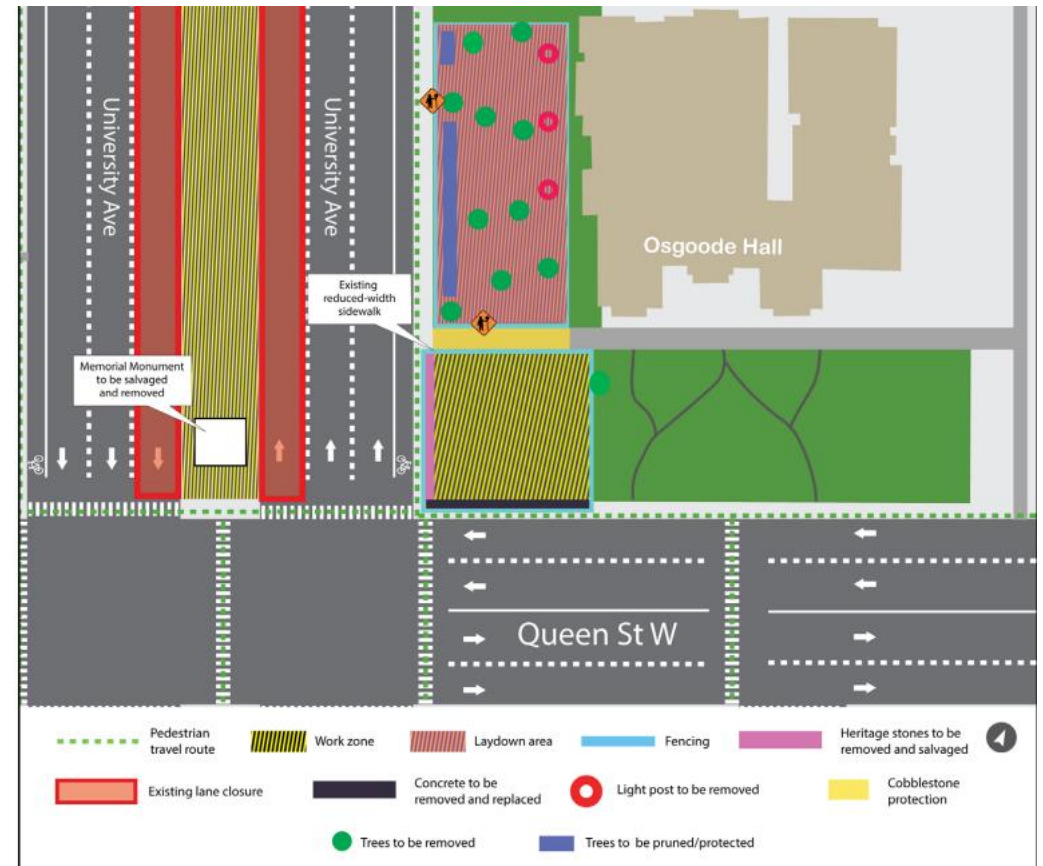
Site Preparation (Laydown)

Hours of work:

- Weekdays: 7:00 a.m. to 5:00 p.m. and occasional weeknights: 7:00 p.m. to 5:00 a.m.

Work includes:

- Fencing installation
- Removal of light posts
- Pruning and removal of trees
- Site preparation



Work in Progress: South

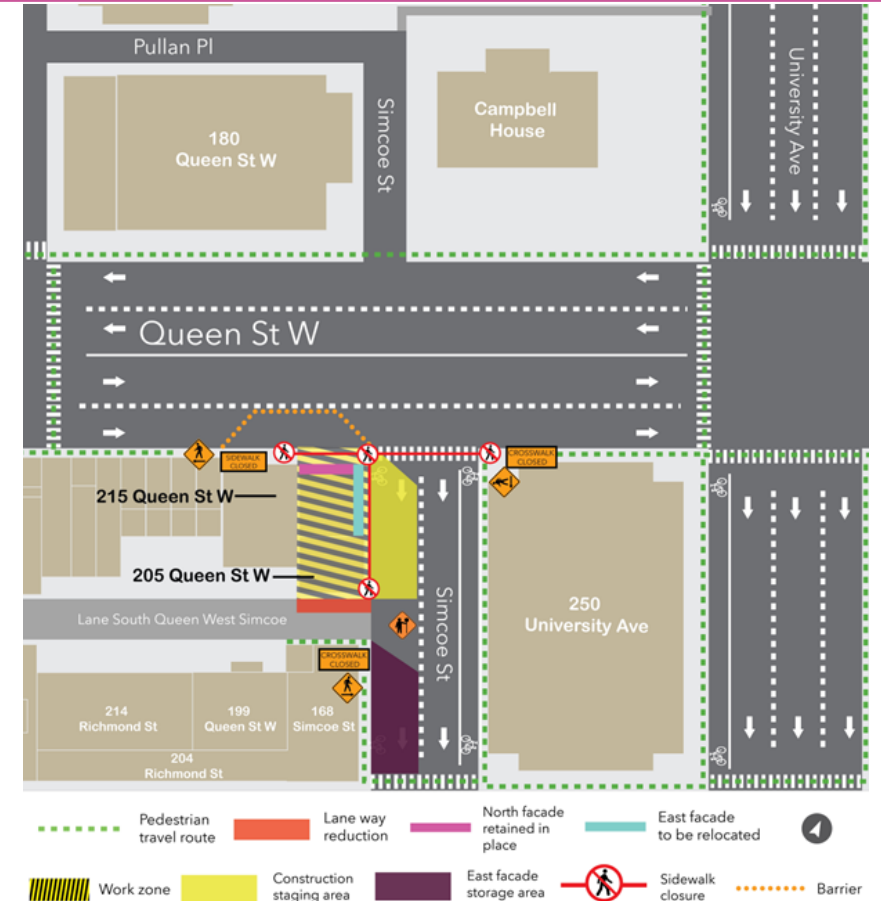
205 Queen Street West Heritage Façade Preservation + Retention

Hours of work:

- Weekdays: 7:00 a.m. to 5:00 p.m.

Work includes:

- Site preparation
- Heritage Façade Preservation and Retention (East, North and South)



Work in Progress: University Avenue Median

South African War Memorial: Preservation

- Scaffolding has been installed around the memorial.
- The statues will be secured and lifted with a crane, placed onto a transport truck and transported to a storage facility for conservation work and safekeeping.
- The stones will be removed one by one to be transported to a safe storage warehouse.
- Additional dismantled and salvaged such as:
 - Stones forming the fountain
 - Tree planters and cladding
 - Vegetation planters and cladding
 - Concrete pavers, bricks and stone stairs on the ground of the median
- Commencement date of removal work expected January 29



Construction Look-Ahead

Timing	Activity	Location	Details & Purpose
Q1 2024	Heritage Façade Protection + Retention Works	South site	Initiate preservation and retention works at future south station site
	Site Preparation	Laydown site (West of Osgoode Hall)	Prepare laydown area, including fencing installation, tree removal and protection and ground preparation
	South African War Memorial	Median	Heritage preservation and removal works
	Heritage Fence + Cobblestone Removal	North site	Heritage preservation and removal works
	Heritage Relocation	South site	Removal and storage of West façade wall for future reinstallation
	TTC Entrance Closure -	North site	Permanent closure of University & Queen West Entrance, Northeast corner; entrance will be demolished
Q2 / Q3 2024	Piling	South + North sites	Install foundations to support future excavation of site

Upcoming Work

Upcoming work to support the build of the future Osgoode stations

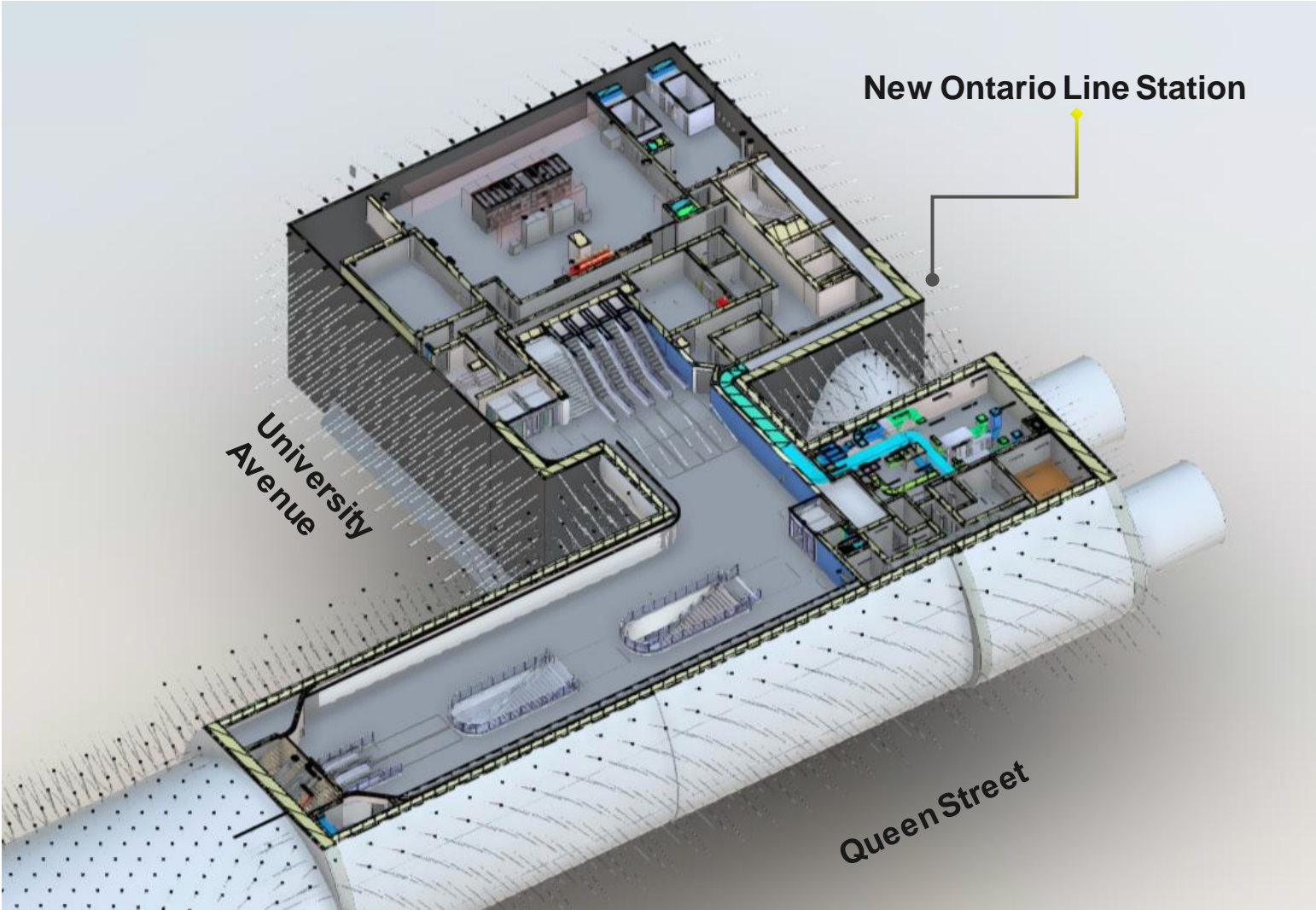
- North Entrance
 - Tree pruning, removal + protection
 - Cobblestone removal
 - TTC Entrance Closure - University & Queen West Entrance, Northeast corner
 - *Estimated Timing: TBD late February 2024, more details to be shared in next CLC*
- South Entrance
 - Heritage Façade retention + West façade demolition - ongoing
- University Avenue Median
 - South African War Memorial: Removal of statues and memorial

Discussion: Station Design

Future Osgoode Station: North Entrance

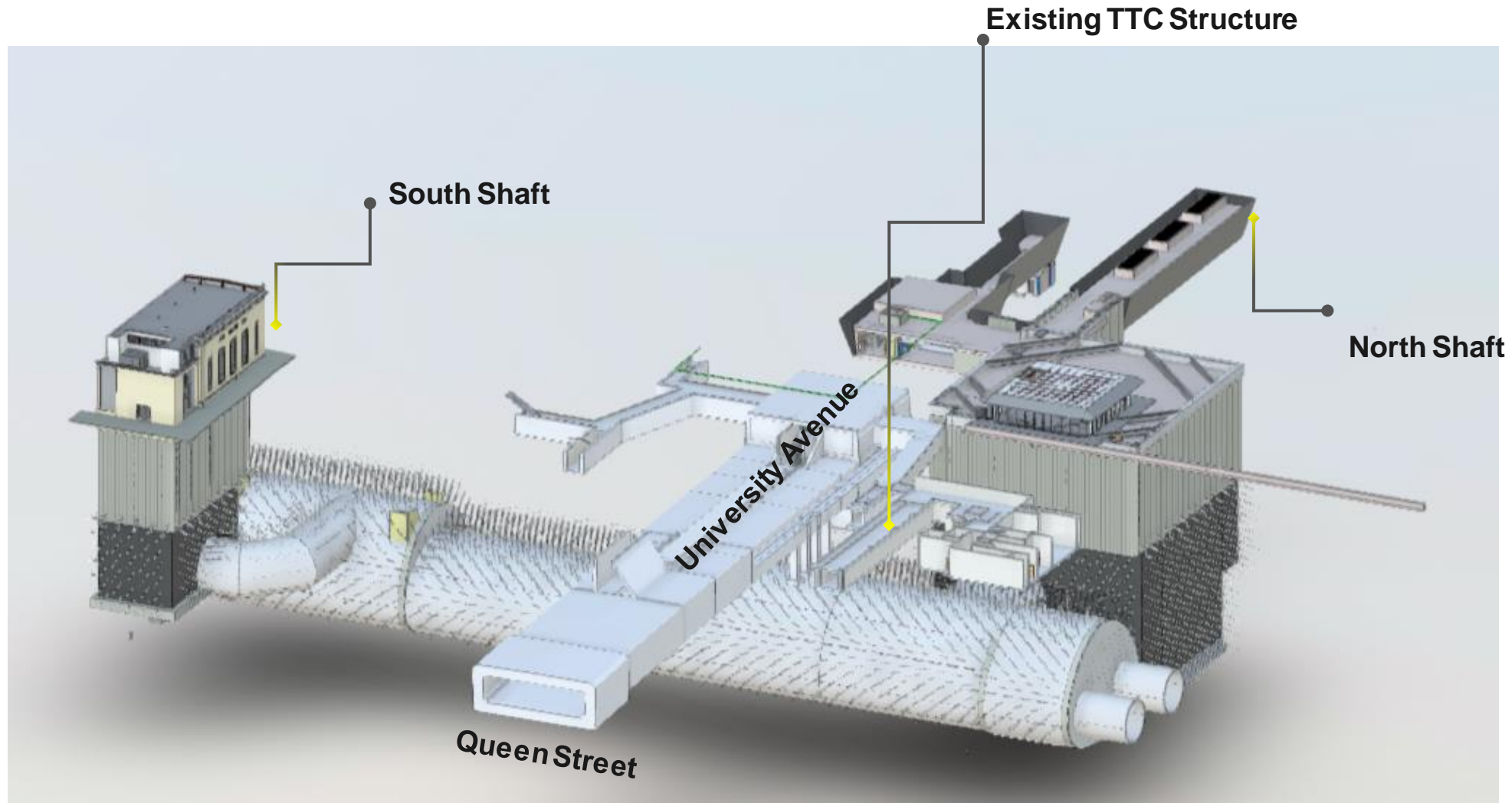


North Station



Preliminary design, subject to modifications

Full view of Osgoode Station looking Northwest



CONTACT METROLINX

Metrolinx will keep the community, residents and businesses informed by providing project updates, seeking input and feedback, and addressing questions and concerns effectively and quickly.

Connect with us:

Julia Orsini, Community Engagement Advisor Julia.Orsini@metrolinx.com or 437-451-0410

Ross Andersen, Senior Advisor Community Engagement Ross.Andersen@metrolinx.com or 416-418-9281

Email: OntarioLine@metrolinx.com

Telephone 24/7: 416-202-5100

Ontario Line e-newsletter: [Metrolinx.com/OntarioLine](https://www.metrolinx.com/OntarioLine)

Follow us on social media:

X / Facebook / Instagram @OntarioLine

