

# Corktown Construction Liaison Committee

January 25, 2024



Artist's rendering – subject to change



# Agenda

## Welcome (5 minutes)

- Introductions
- Land Acknowledgement
- Safety Moment

## Presentation (25 minutes)

- Review of Action Items
- Lower Don Yard Enabling Works
  - Construction Update
- Corktown Station
  - Archeological Update
  - Construction Update
- Hoarding & Artwork
- Community Engagement
- We Are Here For You

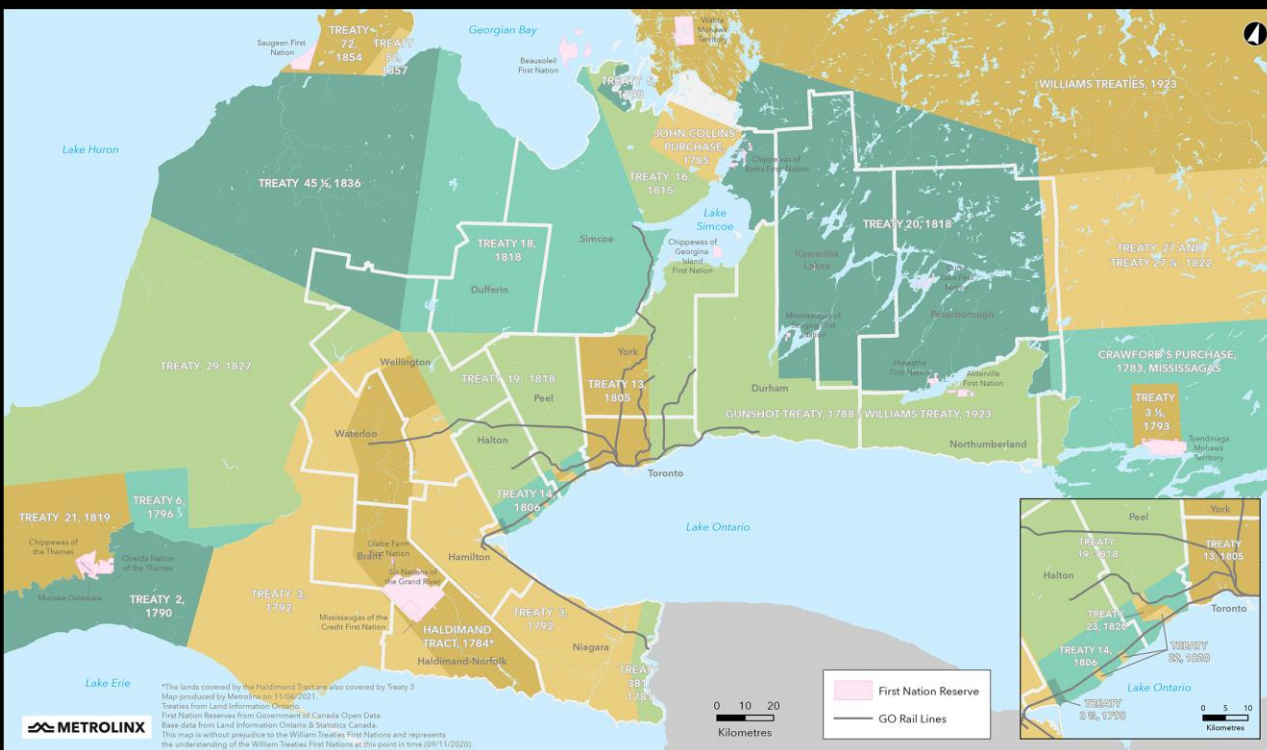
## Feedback and Discussion (30 minutes)





# Land Acknowledgment

Treaties and Reserves in the Greater Golden Horseshoe



Let us take a moment to acknowledge we are on lands that have been, and continue to be, home to many Indigenous Peoples including the Anishnabeg, the Haudenosaunee and the Huron-Wendat peoples.

We are all Treaty people. Many of us have come here as settlers, as immigrants or involuntarily as part of the trans-Atlantic slave trade, in this generation, or generations past.

We acknowledge the historic and continued impacts of colonization and the need to work towards meaningful reconciliation with the original caretakers of this land.

We acknowledge that Metrolinx operates on territories and lands covered by many treaties that affirm and value the rights of Indigenous communities, Nations and Peoples.

We understand the importance of working towards reconciliation with the original caretakers of this land. At Metrolinx, we will conduct business in a manner that is built on a foundation of trust, respect and collaboration.

# Safety Moment

1

## Carbon monoxide awareness

Carbon monoxide is an odorless, colourless gas that often goes undetected. It's important to know how to prevent carbon monoxide poisoning and what to do if you suspect a leak.

This "invisible killer" is produced by burning fuel in cars or trucks, small engines, stoves, lanterns, grills, fireplaces, gas ranges, portable generators or furnaces. Winter can be a prime time for carbon monoxide poisoning as people turn on their heating systems and mistakenly warm their cars in their garages. When the gas builds up in enclosed spaces, people or animals who breathe it can be poisoned. Ventilation does not guarantee safety.

It is recommended that you install a battery-operated or battery backup carbon monoxide detector in the hallway near each sleeping area in your home. Check or replace the battery when you change the time on your clocks each spring and fall and replace the detector every five years.

### Symptoms

Symptom severity varies depending on the level of carbon monoxide and duration of exposure. Mild symptoms sometimes are mistaken for flu with a headache as a low to moderate poisoning and vomiting and loss of consciousness as one of the symptoms of high-level poisoning.

Upon detection of a carbon monoxide leak, alert everyone on the premises and move outside to fresh air immediately. Call 9-1-1 and the gas company. Do not reenter the premises until cleared by the fire department.



# PREVIOUS CLC MINUTES AND ACTION ITEMS

ACTION ITEM	STATUS UPDATE
<ul style="list-style-type: none"> <li>• Metrolinx to determine how to incorporate AODA regulations into the Corktown station Interpretation and Commemoration Plan.</li> </ul>	<p>Heritage consultant is looking at various options including braille panels on exterior panels and technology like Blindsquare Event app (used at AGO). Sound-based exhibits reviewed but determined not feasible. More info to be shared at future CLCs as planning progresses.</p>
<ul style="list-style-type: none"> <li>• Metrolinx to continue to notify MPP Wong-Tam’s office of any provincial concerns.</li> </ul>	<p>Ongoing.</p>
<ul style="list-style-type: none"> <li>• Metrolinx to provide an estimation of when the Corktown station construction is expected to completed.</li> </ul>	<p>Corktown structural build expected to be completed in 2030. Station construction is typically 3 years of work above ground and 3 years below ground.</p>
<ul style="list-style-type: none"> <li>• Metrolinx to explore street light options for the sidewalk and the cycle path exit on Parliament Square Park on the West and the East.</li> </ul>	<p>The cycle path is located on City of Toronto property and Metrolinx doesn’t have control over lighting or any other elements in the area. Metrolinx will convey the community's concerns to the City of Toronto</p>
<ul style="list-style-type: none"> <li>• Metrolinx to follow up on the suggestion of a video camera on the Globe and Mail Building to view the sites has been abandoned.</li> </ul>	<p>Unfortunately, this is not feasible. However, Metrolinx will continue to provide updates on the sites program through videos on social media platforms.</p>
<ul style="list-style-type: none"> <li>• Metrolinx to determine if the monitors measure dBA or dBZ.</li> </ul>	<p>Noise monitors measure dBA.</p>
<ul style="list-style-type: none"> <li>• Metrolinx to determine the decibel levels of a whisper quiet generator.</li> </ul>	<p>The WhisperWatt generators used for the archaeological work are 66 dBA.</p>
<ul style="list-style-type: none"> <li>• Metrolinx to follow up on the site artwork to ensure that there is area relevancy.</li> </ul>	<p>Metrolinx is planning to engage with the community to ensure community input is part of the artwork design.</p>
<ul style="list-style-type: none"> <li>• Metrolinx to send meeting minutes, presentations, and other relevant files in an email separate to the meeting invitation going forward.</li> </ul>	<p>Ongoing.</p>
<ul style="list-style-type: none"> <li>• Metrolinx to investigate clearing graffiti on the black paint of the hoarding.</li> </ul>	<p>Daily inspections are conducted regularly, and Metrolinx promptly addresses graffiti. Currently, there are service locates spray painted in different colours on the black hoarding that may resemble graffiti tags.</p>

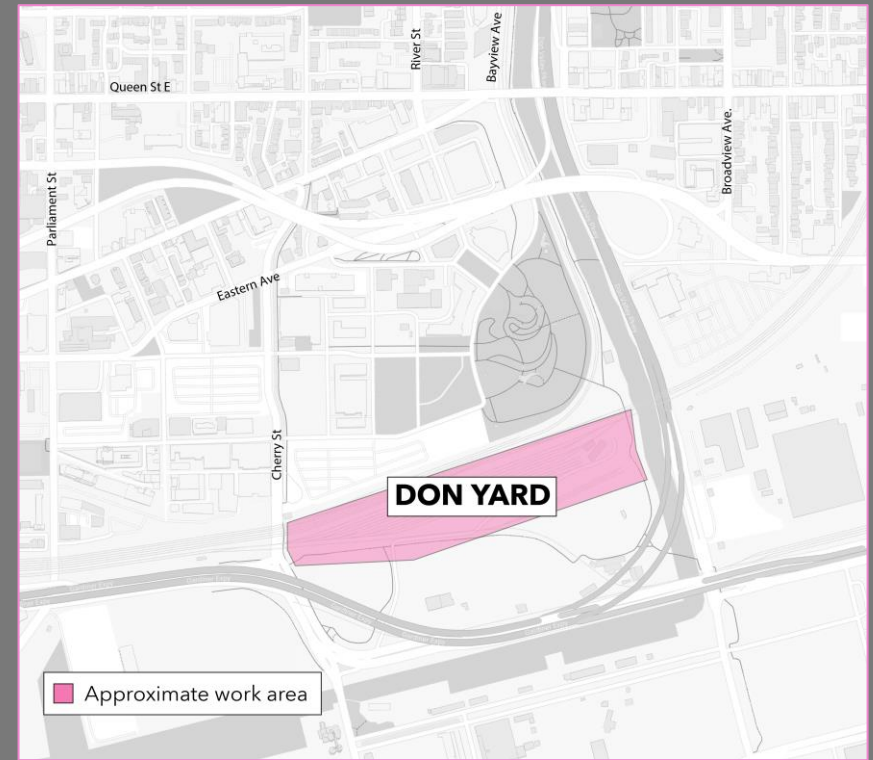
# Construction Update: Lower Don Enabling Works





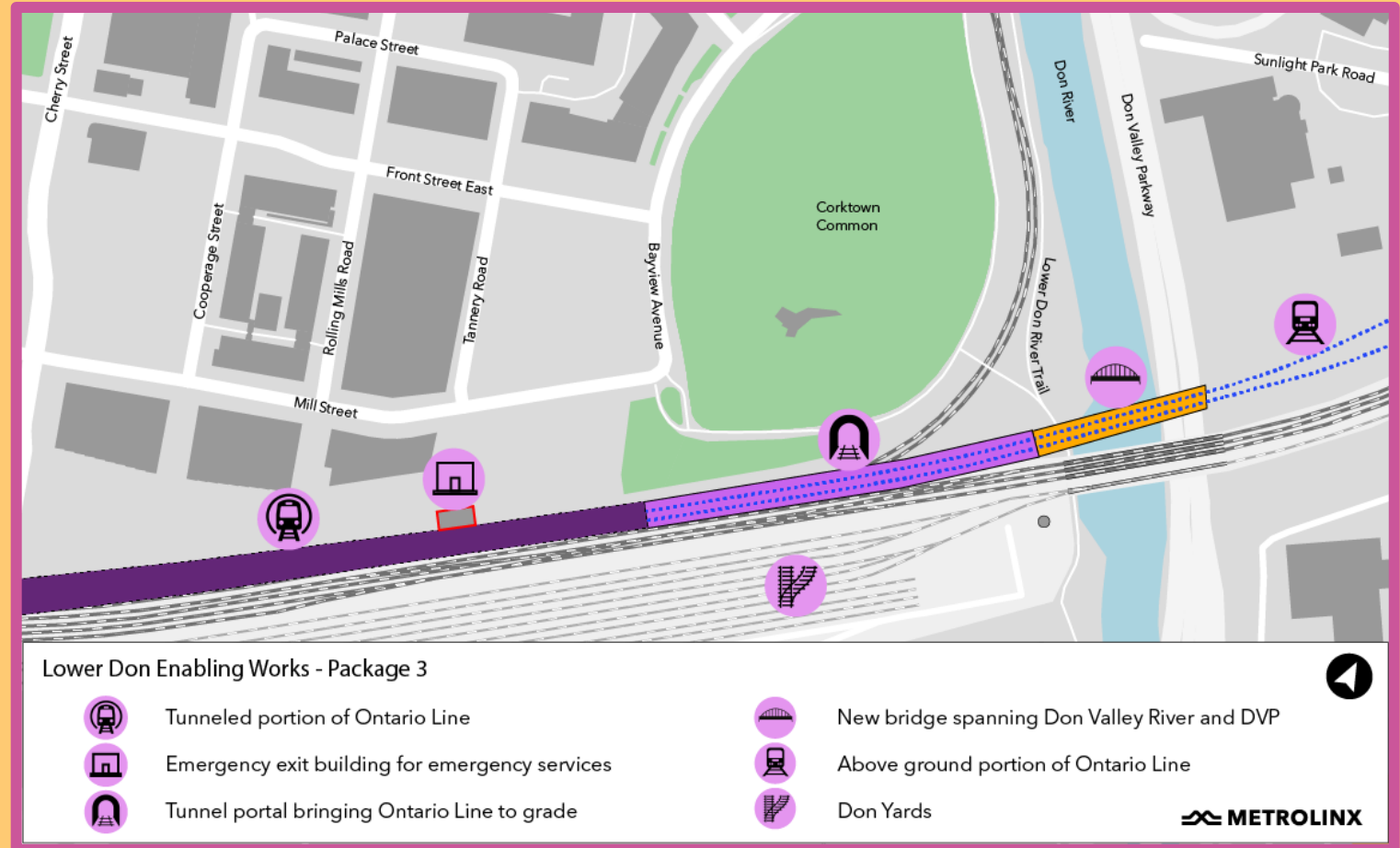
# Update: Don Yard Enabling Works

- Track construction, utility installations, and concrete works continue in the Don Yard
- Current work takes place Sunday – Friday during the day and night
- In 2024, there will be three weekend closures of the Lakeshore East rail corridor to commission new tracks and train signals
- The Lakeshore East Rail Corridor will be shut down over the following weekends:
  - Friday April 5 – Sunday April 7
  - Friday April 19 – Sunday April 21
  - Friday May 3 – Sunday May 5
- In early February 2024, preparation work for the new Ontario Line portal and bridge will begin



# What is Early Works Three?

- Construction of a new bridge spanning 120m dedicated for the Ontario Line as tracks pass over the DVP and Don River
- Cut-and-cover tunnel constructed behind Corktown Commons where Ontario Line is brought to grade
- Emergency services building, noise wall, and monopole
- Work expected to continue through 2028



Map of EW3, including cut -and-cover portal and new bridge works.



LDEW3

# What to expect in 2024



## Preparatory Works for East Abutment

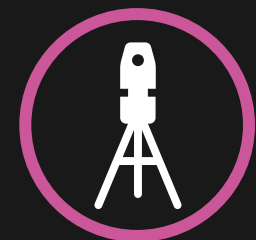
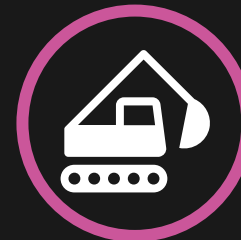
- Establish work area
- Locate and identify underground utilities
- Install pedestrian detour routes at site entrance
- Install air, noise, and vibration equipment
- Construct site entrance at Sunlight Park Road
- Protect and remove trees as required
- Pre-construction surveying of existing buildings
- Install perimeter fencing around work area with environmental controls (i.e., silt fencing and sediment barriers)

## East Abutment

- Once early works are complete, construction of the east abutment will begin in **April 2024**.

## West Abutment

- Early works for the West Abutment are scheduled to begin in the **summer of 2024**.



# Upcoming in February

## East Abutment Early Works

### Establish work area

- Set up and establish site trailer, generator, toilets and segregated waste disposal facilities.

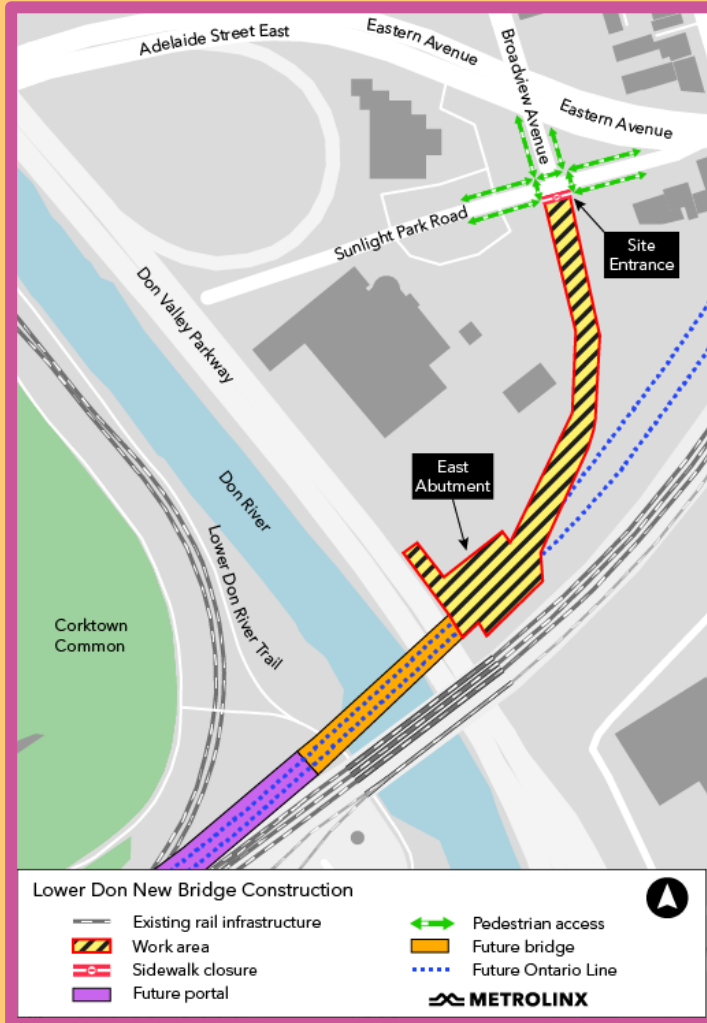
### Locate and identify underground utilities

### Install pedestrian detour routes at site entrance

- Pedestrian detour is in place along Sunlight Park Road until the construction of the site entrance is complete.
- Detour route will include clear signage and access ramps for safe crossings

### Install monitoring equipment

- Monitors will be installed adjacent to the work site to ensure environmental compliance



East Abutment construction.

# Upcoming in March

## East Abutment Early Works

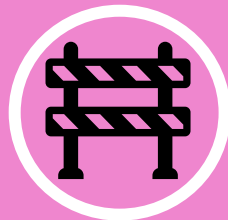


### Protect and remove trees as required

- 11 trees within the work zone will be removed by the existing bridge
- 8 Manitoba maples, 1 red oak, 1 elm, 1 Russian olive



### Pre-construction surveying of existing buildings



### Install perimeter fencing around work area with environmental controls

- A concrete jersey barrier with chain link fence atop will be constructed around the work area, including a gate at the site entrance
- Silt fencing and sediment barriers will be installed to protect catch basins.



# Corktown Station: Archaeological Update

# Archaeological Update

## 1 North Block

- Archaeology field work has been completed in the North Block (north of Front Street East) with Stantec at the Hamilton/St. Lawrence Foundry (AjGu-124)
  - Archaeological field work completed on Friday, January 12, 2024
  - Tent taken down on Friday January 19, 2024
  - Preliminary excavation report preparation underway
  - North Block to be handed over to the constructor, Ontario Transit Group (OTG) by the end of the month; discussions in progress with the Archaeology Program Unit at the Ministry of Citizenship and Multiculturalism (MCM) about what activities can occur until archaeology reporting is completed
- At the Lime Kiln Site (AjGu-64), avoidance and protection measures being put in place by OTG with Archaeological Services Inc. monitoring the progress

# Archaeological Update

## 2 South Block

- First Parliament Zone (AjGu-41) excavations in the centre of the South Block are completed and discussions of salvage of First Parliament wall ongoing
- Other areas within the South Block:
  - Seeking avoidance and protection of the 44 Parliament Street area
  - Also seeking avoidance and protection of the 271 Front Street East area; discussions still underway with the MCM
  - Both areas will require additional archaeological investigation after the subway station has been constructed
  - Will continue excavations at 265 Front Street East with tent being installed starting this week
  - Archaeology field work to recommence week of February 5, 2024



# Corktown Station: Construction Update

# Completed Work

## 1 Tree Removal on King Street East

- Nine trees were removed along King Street East
- Pruning and protection scheduled completion by the end of February 2024



# Completed Work

## 2 Grounds Preparations – North Site

Archaeological investigations were completed in the northeast corner of the North Site in early December with a portion of the site handed over to OTG. Crews began preparing the northeast corner for the ground working platform by performing backfilling and compaction and paving.

This work is conducted by a team of excavators, compactors and rollers. Site bases are graded, to ensure future excavation of the site is free of potential flooding issues and grounds are stabilized for the next phase of construction.





# Upcoming Work

# Upcoming Works

## 3 Site Preparation Mobilization Activities

### Site Preparation

- Construction of ground working platforms and construction access.  
Estimated completion: April (weather depending)
- Temporary site office delivery - February/March 2024



# Upcoming Work

## 4 Q1 - Pedestrian Tunnel Installation – Phase 1

### King Street East (at Berkeley Street)

- Work commencing: Early February
- Estimated completion by: Up to 30 days
- Weekdays (Monday to Friday) from 9:00 a.m. to 4:00 p.m.

### Scope:

- To ensure the public is protected from the nearby construction within the site, crews will be building a tunnel to cover the pedestrian walkway on King Street East.

### Impacts:

- The south sidewalk on King Street East will be completely closed between Berkeley Street and Parliament Street.
- Partial lane closures on King Street East and Berkeley Street
- 504 King streetcar existing TTC bus stop temporarily relocated west of Berkeley Street
- No impacts to the TTC schedule.



Sample pedestrian tunnel. Actual installation may differ.



# Upcoming Work

## 5 Monitoring Device Installations - Tunnel Segments

### Richmond Street East, Adelaide Street East, Parliament Street

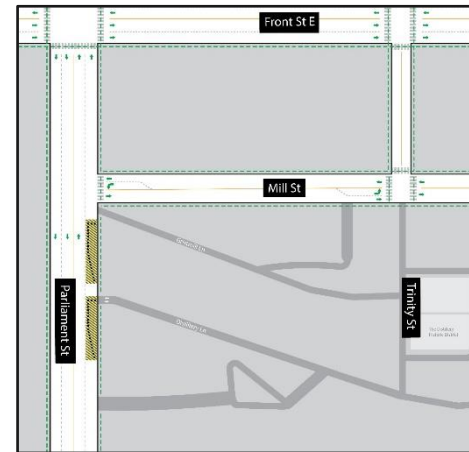
- Work commencing: February 12, 2024
- Estimated completion by: Up to 30 days
- Weekdays (Monday to Friday) from 7:00 a.m. to 7:00 p.m.

#### Scope:

- Construction crews will be conducting monitoring device installations for investigative works underground. Drilling is necessary to test and visualize the utilities and ground conditions.

#### Impacts:

- Temporary, intermittent parking, lane and sidewalk closures are required.
- Crews are expected to be onsite prior to 7:00 a.m. to set up equipment.
- Barriers will be placed to separate pedestrians from live traffic and active work zones.
- Flag-persons and paid duty officers will be present to guide traffic and pedestrians at Richmond Street East and Berkeley Street.
- Area residents and businesses can expect to hear noise from work equipment, specifically hydrovac trucks and saw cutting tools as required. Crews will take measures to minimize noise impacts wherever possible.
- No impacts to the TTC schedule or transit access points.

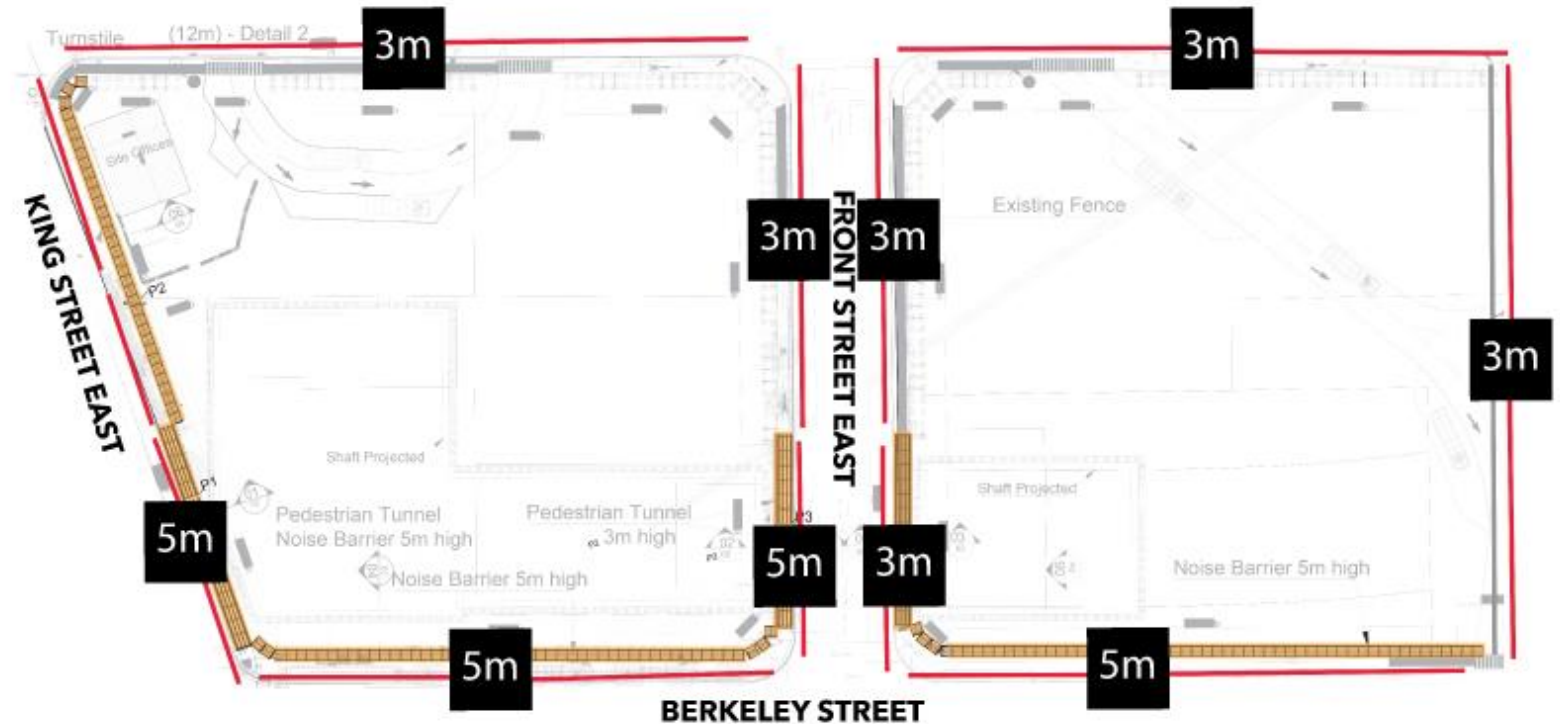


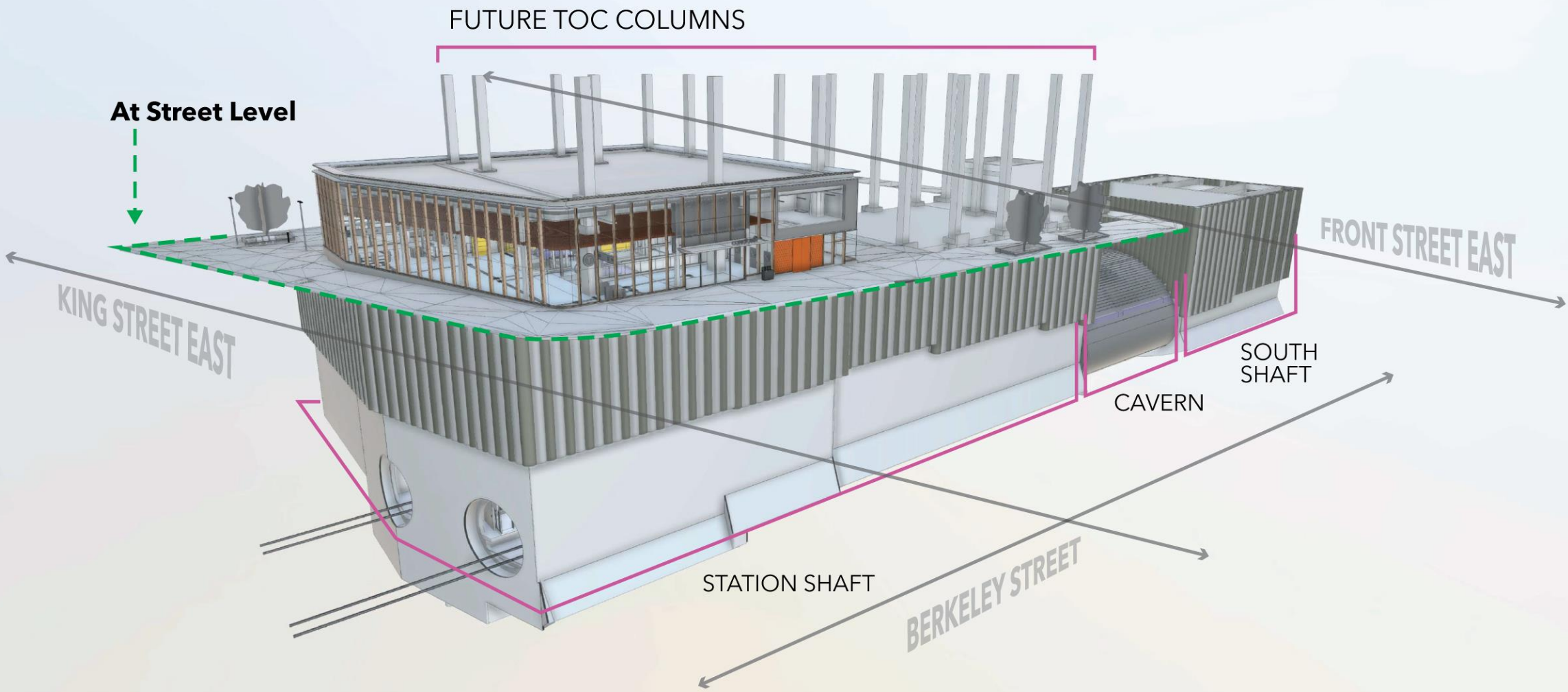
# Upcoming Work

## 6 Q2 - Pedestrian Tunnel Installation - Phase 2

### Pedestrian Tunnel - Phase 2

- Phase 2 scheduled for installation once land given to OTG by Metrolinx and site preparations completed.
- Additional Metrolinx branded signage to be installed along King Street East, Berkeley Street, Parliament Street and Front Street East.







# Hoarding & Artwork

# Community Artwork

- In addition to signage, artwork designs will be added to the hoarding.
- Metrolinx will collaborate with the community to obtain feedback on potential designs and imagery that reflect the community's vision.
- Currently, Metrolinx is in the process of developing an engagement strategy to facilitate this collaboration.
- Further details regarding the collaboration process, as well as specifics on allocated space will be shared at a later date.



# Discussion

# Community Engagement



# Community Engagement

## 10 Ongoing Community Canvassing and Participation

- **Project staff and representatives will commence ongoing interaction with the community, for the duration of the project. Activities will include:**
- Pop-ups presences in the community (parks, events, markets).
- Pop-ups in condo lobbies.
- Monthly CLC meetings.
- In-person and virtual consultation with residences and businesses.
- Shop Local digital campaigns, supporting communities affected by Ontario Line Construction.
- News, progress and information shared in the Ontario Line newsletter (currently over 6,600 subscribers).

# We Are Here For You

## 11 Community Engagement Contact Information

Metrolinx will keep the community, residents and businesses informed by providing project updates, seeking input and feedback, and addressing questions and concerns effectively and quickly.

Connect With Us:

- Zahrah Munas , Community Engagement Advisor [Zahrah.Munas@metrolinx.com](mailto:Zahrah.Munas@metrolinx.com), 437-328-5354
- Mark Clancy, Senior Manager, Community Engagement [Mark.Clancy@metrolinx.com](mailto:Mark.Clancy@metrolinx.com), 647-449-2857

Telephone 24/7 @ 416-202-5100

Ontario Line e-newsletter @ [Metrolinx.com/OntarioLine](http://Metrolinx.com/OntarioLine)

Follow us on social media @ OntarioLine

