

Progress on **GO & UP** Capital Projects to Better Connect Communities

February 15, 2024

Stephanie Davies
Chief Capital Officer (GO & UP)



KITCHENER LINE EXPANSION - 4TH TRACK

Bloor Bridge shifted into place to accommodate 4th track alignment.



UNION STATION ENHANCEMENT PROJECT

Sherbourne signal bridge demolished and low-mast signals installed in preparation for installation of two additional south tracks.





**EAST HARBOUR
TRANSIT HUB**

Concrete foundation curing
and caisson drilling for
future station crash walls.



LONG BRANCH GO STATION

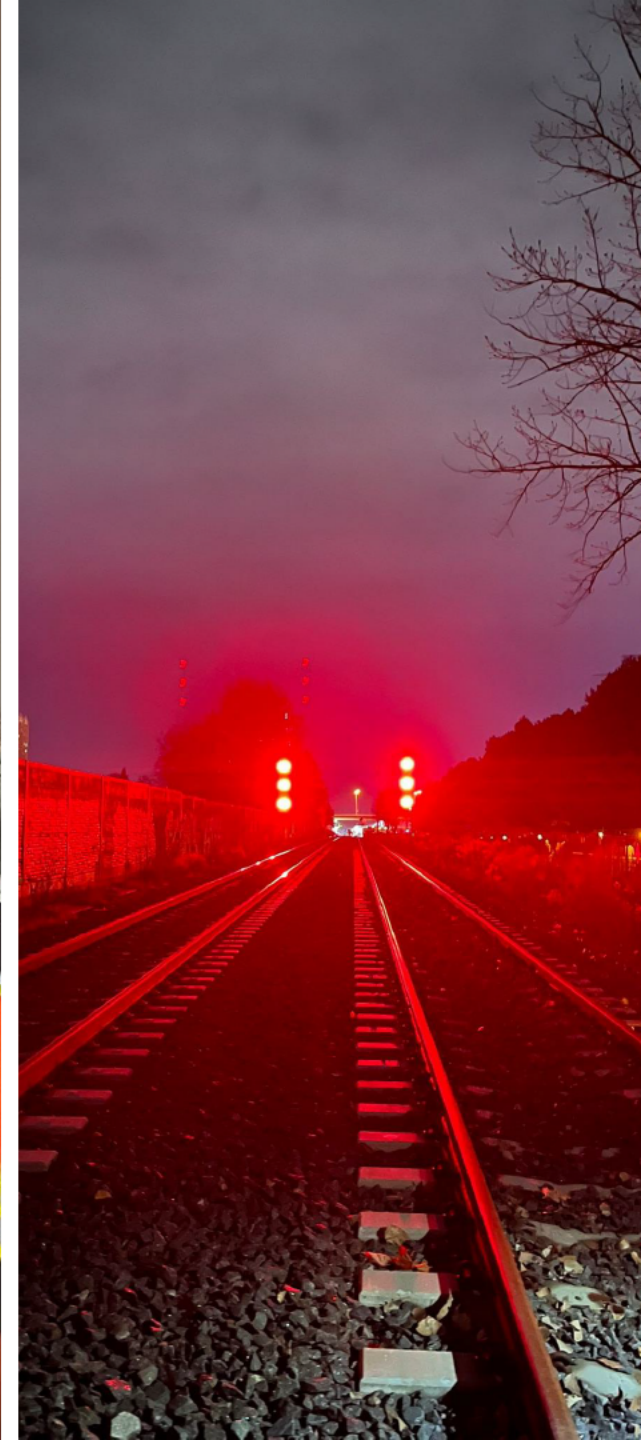
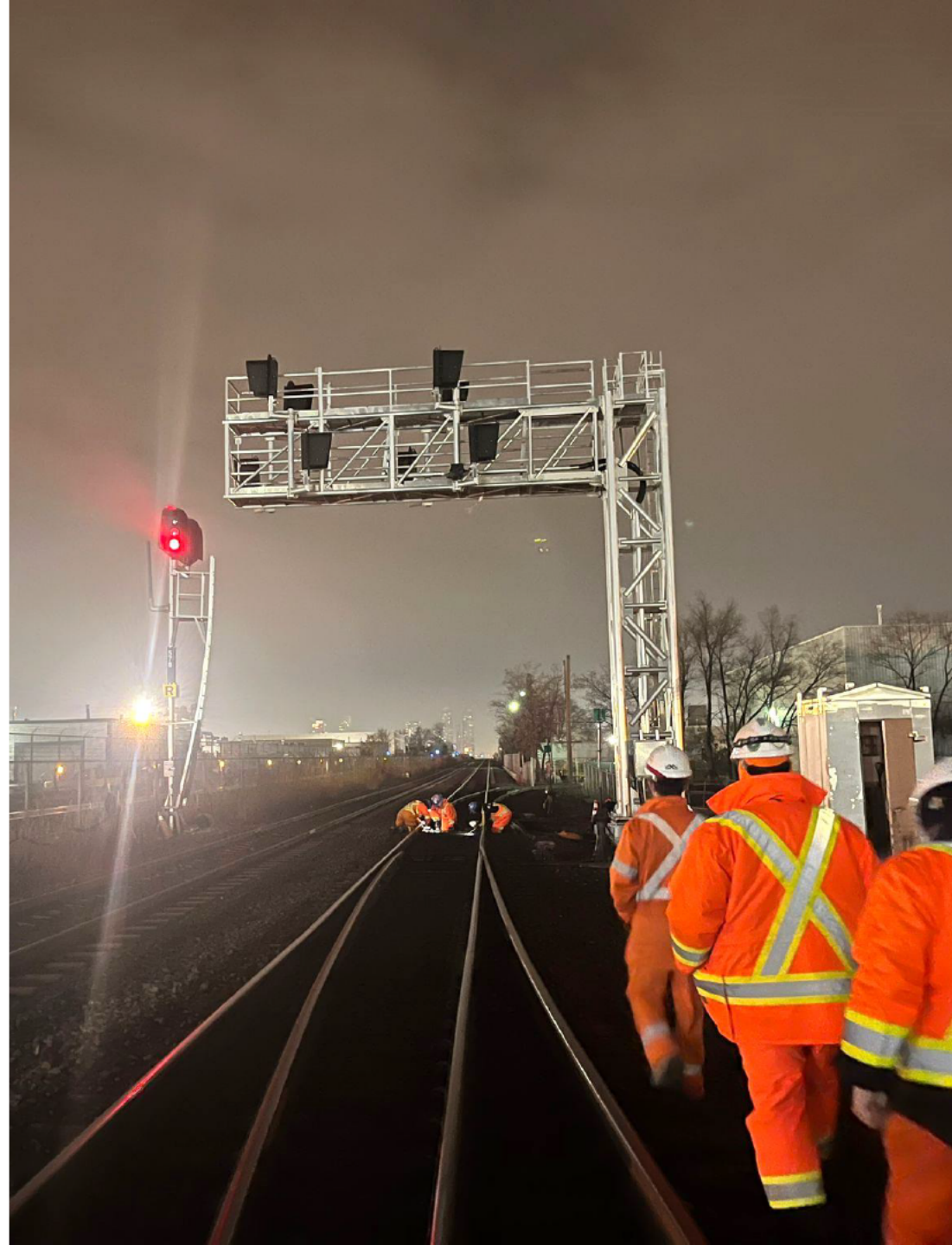
Demolition progressing ahead of platform rehabilitation, accessibility improvements, and construction of new station amenities.





STOUFFVILLE LINE 2ND TRACK AND SIGNALS

First of three phases of signal work completed along the Stouffville corridor in Scarborough.





BOWMANVILLE EXTENSION

Environmental assessment addendum completed after review and engagement on updates to the proposed Bowmanville alignment.



Lakeshore West

Hamilton &
West Harbour
In-Market

DBB

Lakeshore West

Oakville
In-Market

CMAR

EXISTING STATIONS RENOVATIONS

Renovations for Oakville, Hamilton and West Harbour GO stations are now in procurement. This is the first stage of planned renovations at over 20 existing stations across the GO Rail network.

ON-CORRIDOR WORKS

Acceptance of ONxpress operations and maintenance proposal for the GO rail network.

