

# Moss Park Construction Liaison Committee

February 8, 2024

# Agenda

## Welcome (5 minutes)

- Introductions
- Land Acknowledgement
- Safety Moment

## Presentation (25 minutes)

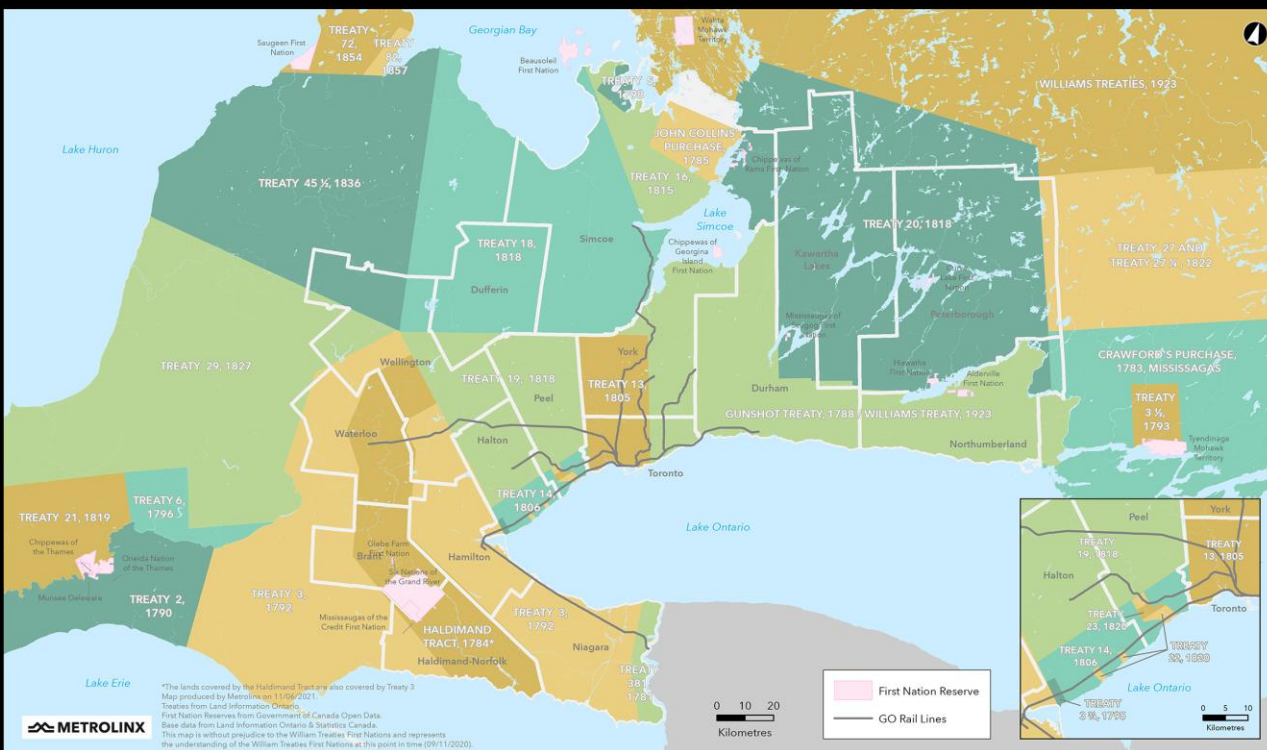
- Construction Updates
- Graffiti Management
- Community Engagement
- We Are Here For You

## Feedback and Discussion (30 minutes)



# Land Acknowledgment

Treaties and Reserves in the Greater Golden Horseshoe



Let us take a moment to acknowledge we are on lands that have been, and continue to be, home to many Indigenous Peoples including the Anishnabeg, the Haudenosaunee and the Huron-Wendat peoples.

We are all Treaty people. Many of us have come here as settlers, as immigrants or involuntarily as part of the trans-Atlantic slave trade, in this generation, or generations past.

We acknowledge the historic and continued impacts of colonization and the need to work towards meaningful reconciliation with the original caretakers of this land.

We acknowledge that Metrolinx operates on territories and lands covered by many treaties that affirm and value the rights of Indigenous communities, Nations and Peoples.

We understand the importance of working towards reconciliation with the original caretakers of this land. At Metrolinx, we will conduct business in a manner that is built on a foundation of trust, respect and collaboration.



# Safety Moment

## 4 Winter Emergency Preparedness

### Power Outages

Be prepared to be self-sustaining for a **period of three days**.

- A supply of drinking water
- Food items and snacks including baby formula + food
- Necessary medications supply
- Warm clothing, blankets
- Flashlights + extra batteries
- Charged power bank(s) to charge mobile phones
  
- Ensure your loved ones who may have accessibility or mobilization limitations also have the above supplies on hand.



# Previous CLC Minutes and Action Items

ACTION ITEM	STATUS UPDATE
<ul style="list-style-type: none"><li>• Metrolinx to provide an update on the success of the Connect6ix Job Fair at the next CLC meeting.</li></ul>	<ul style="list-style-type: none"><li>• Slide # 7 contains the updates.</li></ul>
<ul style="list-style-type: none"><li>• OTG to provide an update on the plans for the OTG Job Fair at the upcoming CLC meetings, as details are confirmed.</li></ul>	<ul style="list-style-type: none"><li>• Metrolinx and OTG discussions ongoing.</li></ul>
<ul style="list-style-type: none"><li>• OTG to share photos of smaller/quieter equipment used at the Moss Park site - chosen against alternatives for their noise or vibration mitigation.</li></ul>	<ul style="list-style-type: none"><li>• OTG has utilized a remote operated compactor to reduce vibration impacts when possible. Photo on slide 12.</li></ul>

# Ontario Line - Connect 6ix Job Fair

# OL - Connect 6ix Job Fair

## 7 Status Update

- On January 24<sup>th</sup>, 2024, Connect 6ix hosted a job fair in Thorncliffe Park to share information about current and future employment opportunities needed to help deliver the Ontario Line.
- There were over 100 positions available across all partners (excluding Metrolinx).
- There were 14 partners and over 1,300 attendees took part in the job fair.
- We are committed to bringing good jobs to neighbourhoods along the Ontario Line to ensure these communities benefit the most from this transformative project.



# Construction Update



# Current Works

## 9 Concrete Removals

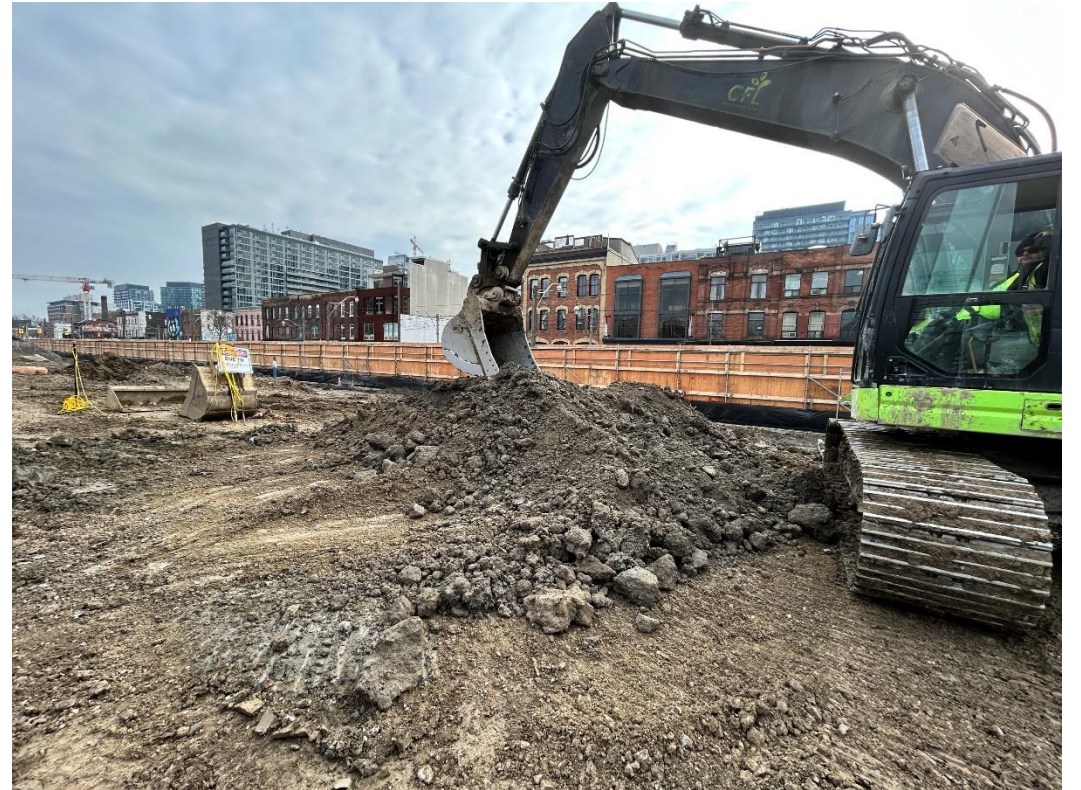
- Removal of the concrete is necessary. The concrete (and other debris excavated from the site from previous structural units (basement slabs, walls) would otherwise obstruct piles and secant walls that will support the new station.
- Completion target date: April 2024.



# Current Works

## 10 Working Platform Remediation

- Hauling out unsuitable material and importing suitable fill and granular to prepare the site for the next phase of construction.
- A solid foundation is crucial in any infrastructure project, especially subway projects. Replacing soil is necessary as the existing conditions do not provide suitable conditions to move to the next phase.
- Completion set to April / May 2024





# Current Works

## 11 Hoarding + East Access Gate

- Plywood panels installation underway through the original arena parking lot area.
- Area has now become available to complete and establish the Sherbourne Street access as the parking service has been moved to newly constructed area.



# Current Works

## 12 Monitoring Device Installations – Tunnel Segments

**Expected start date:** As early as February 12, 2024

**Duration:** Up to three months

**Hours of work:** Weekdays (Monday-Friday), 7:00 a.m. to 7:00 p.m.

### Scope:

Construction crews will be conducting monitoring device installations on Queen Street East. Temporary and intermittent closures will be necessary to conduct work. Area residents can expect to hear noise from saw cutting tools and hydrovac trucks.

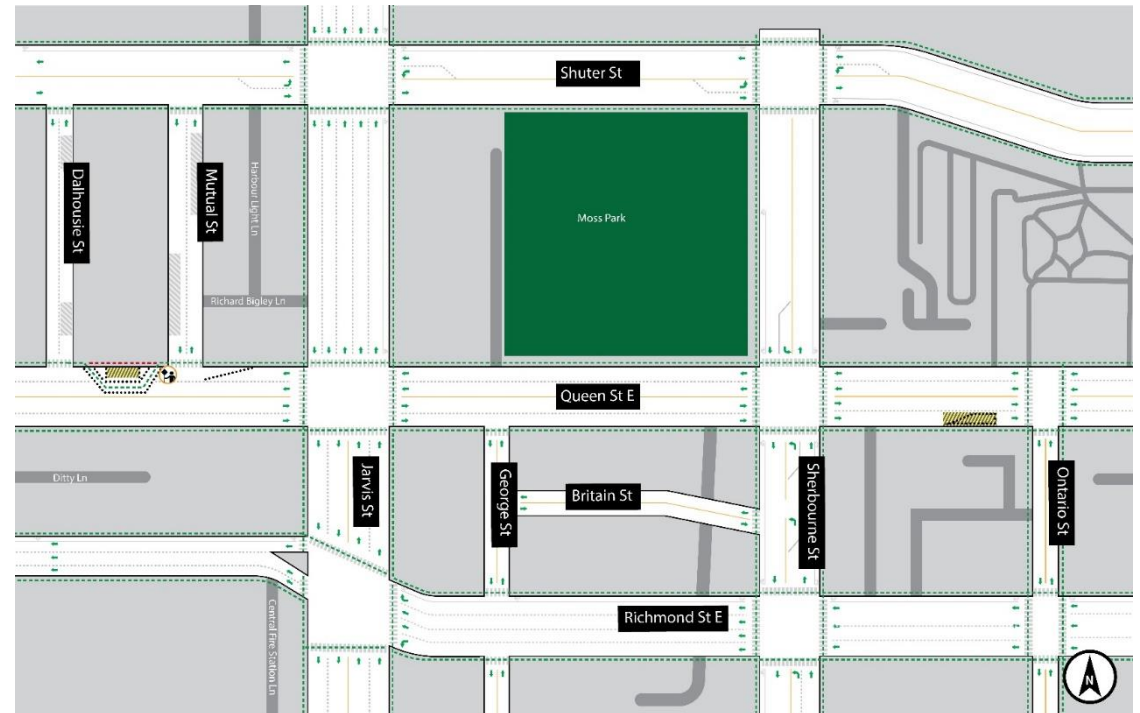
Crews will be onsite prior to 7:00 a.m. to set up equipment.

Work zones will only be closed while crews are conducting installations.

No impacts to lanes or sidewalks during 7:00 p.m to 7:00 a.m.

### Impacts:

Both westbound lanes on Queen Street East between Mutual Street and Dalhousie Street and the eastbound curb lane on Queen Street East between Sherbourne Street and Ontario Street.

















# Completed Works

16 Signage Installation - Phase 1



# Completed Works

## 17 Painting Hoarding

- OTG is actively monitoring and managing graffiti at Moss Park and across the alignment to maintain a positive urban environment.
- Painting hoarding black covers any unwelcomed or offensive graffiti, discouraging future vandalism of the hoarding.





# Completed Works

## 18 Temporary Site Trailers

- Site trailers are now in place for staff to manage activities onsite safely and effectively.





# Completed Works

## 19 Moss Park Arena Parking Lot

### Parking Lot Handover

- The original Moss Park Arena has been handed over to OTG to continue construction of the working platform and closed to the public.
- OTG handed over new lot. Moss Park Arena visitors can now access the lot in the southeast corner.
- OTG will be providing flagging services at Sherbourne Street entrance to ensure safe interaction between parking area and construction traffic.



# Upcoming Work

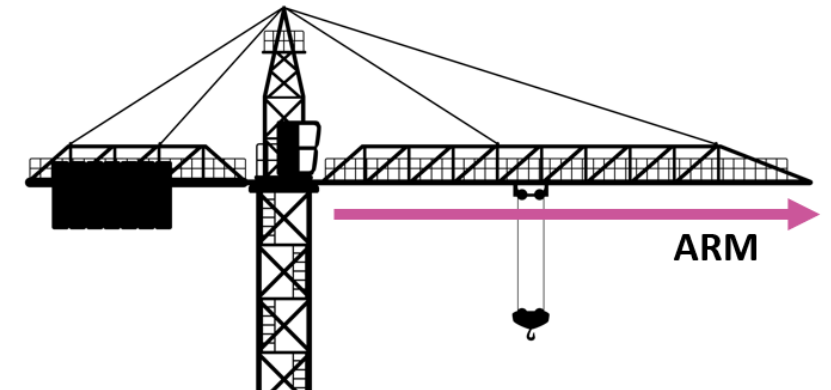
# Upcoming Work

22

## Q2 2024 - Crane installation

### Crane installation onsite targeted to begin April/May 2024

- A tower crane has been selected as the preferred machine for this site.
- This specific crane will facilitate the movement of materials and equipment within our site, ensuring a safer and more efficient construction process, faster execution of the works.
- The tower crane will be operated in accordance with all applicable safety regulations and good practices.
- The tip of the arm of the crane will swing over some properties on Queen Street East - OTG is consulting impacted properties for consent.
- The positioning of the crane is to allow coverage of the entire station shaft - this will increase on site productivity and flow. The crane has been placed as far North as is possible while still covering the shaft.
- **Loads, equipment, and materials will never pass over any property.**
- The City and its transportation services will be involved in the permitting and approval of the crane, ensuring that the swing over the arena and the roadway are approved and safely within requirements.



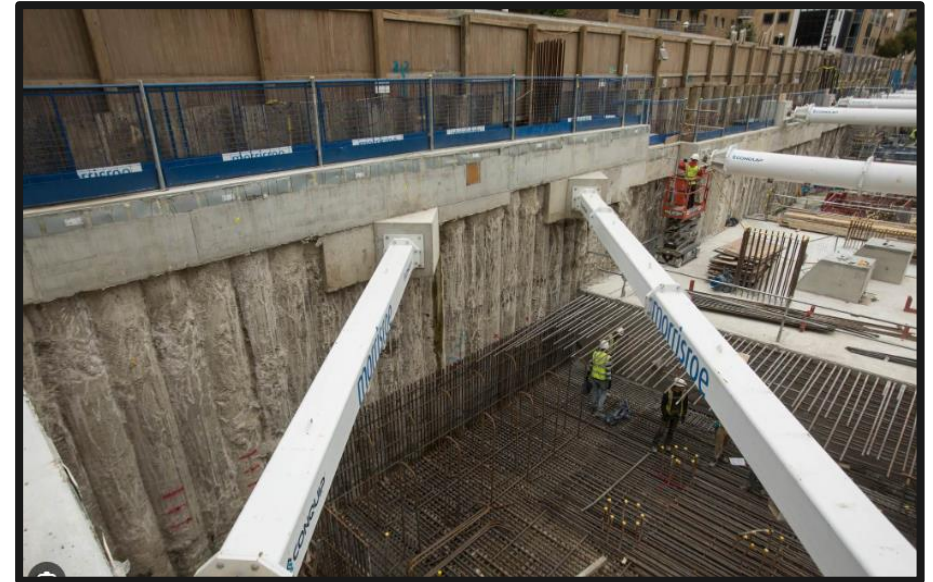
# Upcoming Work

23

Q2 2024

## Pile drilling activities scheduled to begin in May

- Pile drilling is a foundational technique used in constructing underground subway systems.
- It ensures stability and support for tunnels, stations and other subway structures.
- A pile wall consists of overlapping (secant) piles to form structural walls and achieve the required water tightness. Some of the piles are reinforced with steel beams.
- This work is essential for stabilizing and supporting future station structures.
- Piling work is expected to commence in May 2024 and will take approximately 4 months to complete.



*Example of secant pile wall*

# Discussion



# Upcoming CLCs 2024

March 14 / April 11 / May 9 / June 13 / July 11

August 8 / September 12 / October 10 / November 14

# Community Engagement

# Community Engagement

## 25 Ongoing Community Canvassing and Participation

### Activities will include:

- Pop-ups presences in the community (parks, events, markets).
- Pop-ups in condo lobbies.
- Monthly CLC meetings.
- Public Open Houses.
- In-person and virtual consultation with residences and businesses.
- Shop Local digital campaigns, supporting communities affected by Ontario Line Construction.
- News, progress and information shared in the Ontario Line newsletter (currently over 6,600 subscribers).

# We Are Here For You

## 26 Community Engagement Contact Information

Metrolinx will keep the community, residents and businesses informed by providing project updates, seeking input and feedback, and addressing questions and concerns effectively and quickly.

Connect With Us:

- Zahrah Munas , Community Engagement Advisor [Zahrah.Munas@metrolinx.com](mailto:Zahrah.Munas@metrolinx.com), 437-328-5354
- Mark Clancy, Senior Manager, Community Engagement [Mark.Clancy@metrolinx.com](mailto:Mark.Clancy@metrolinx.com), 647-449-2857

Telephone 24/7 @ 416-202-5100

Ontario Line e-newsletter @ [Metrolinx.com/OntarioLine](https://www.metrolinx.com/OntarioLine)

Follow us on social media @ OntarioLine

