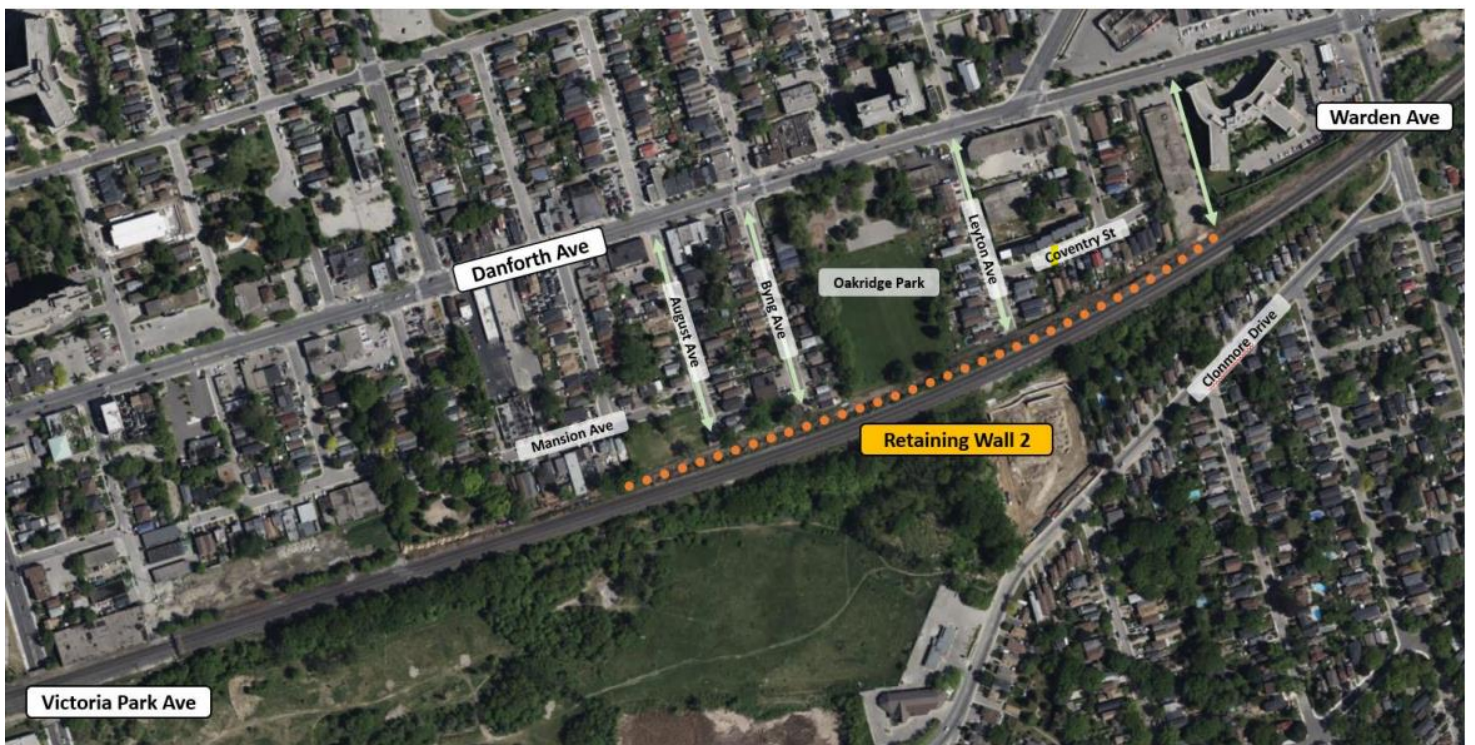


Lakeshore East: Ongoing construction works

November 2023 – January 2026



Ongoing construction work

In mid-November crews began construction work alongside the railway corridor between Mansion Avenue/ Kenworthy Park and Coventry Street to build Retaining Wall 2 (see plan above).

We are currently carrying out ground improvement works in advance of temporary shoring/piling works, earthworks, and compaction along the entire line of the wall in preparation for the construction of the permanent wall. Temporary shoring is expected to begin as early as mid- February.

The final retaining wall will then be constructed and will be made of pre-cast concrete units which will be delivered to the site using local roads.

Construction Activities	Tentative Start Date	Expected Duration	Hours of Work	What to expect
Temporary Shoring/Piling	Mid-February	13 months	Day and night shift	There will be an increase of construction traffic on local roads and the piling activity and earth compaction could cause minor noticeable effects for nearby properties in the form of noise and vibration.
Please note: all dates and timescales are approximate.				

What does this mean for you?

Reasonable precautions will minimize the effects on the local community, but you may notice an increased number of construction vehicles near to the worksite as well as some noise, mud, and site lighting.

We will restrict the idling of non-essential equipment to reduce noise, limit reverse operations, and point lights away from residential windows as much as we can. Noise and vibration monitoring will also be set up to ensure that noise levels are within exposure limits.

Hours of Work:

The work listed above will include a combination of day and night shift, and weekend work may be required periodically. Day shift work will occur between the hours of 7:00 a.m. and 7:00 p.m. five (5) days per week (Monday to Friday) and night shift work, where required, will occur between the hours of 7:00 p.m. and 7:00 a.m. five (5) days per week (Sunday to Thursday). Please exercise caution around active construction sites. We apologize for the inconvenience.

Why do we need to do this?

Construction activities are taking place along the Lakeshore East Rail Corridor to accommodate future GO Rail services. The future service requires the addition of a fourth railway track and the installation of overhead electrification for faster and more efficient trains.

Questions: If you have any questions or concerns about this work, please contact us any time at TorontoEast@metrolinx.com. For more information on GO Expansion in your community, visit our website at www.metrolinx.com.

As with all construction, work may be adjusted, rescheduled or extended due to weather conditions or unforeseen circumstances.

Cet avis de travaux de construction est disponible en français sur demande.

Si vous êtes intéressé, veuillez envoyer un courriel à TorontoEast@metrolinx.com.

Contact Us:

Write to us at: TorontoEast@metrolinx.com

Find us on Twitter [@Metrolinx](https://twitter.com/Metrolinx)

Visit the website: <https://www.metrolinx.com/en/projects-and-programs/lakeshore-east-line-go-expansion>

Scan the QR code to the right to get Lakeshore East Line GO Expansion updates to your device via Twitter!

