

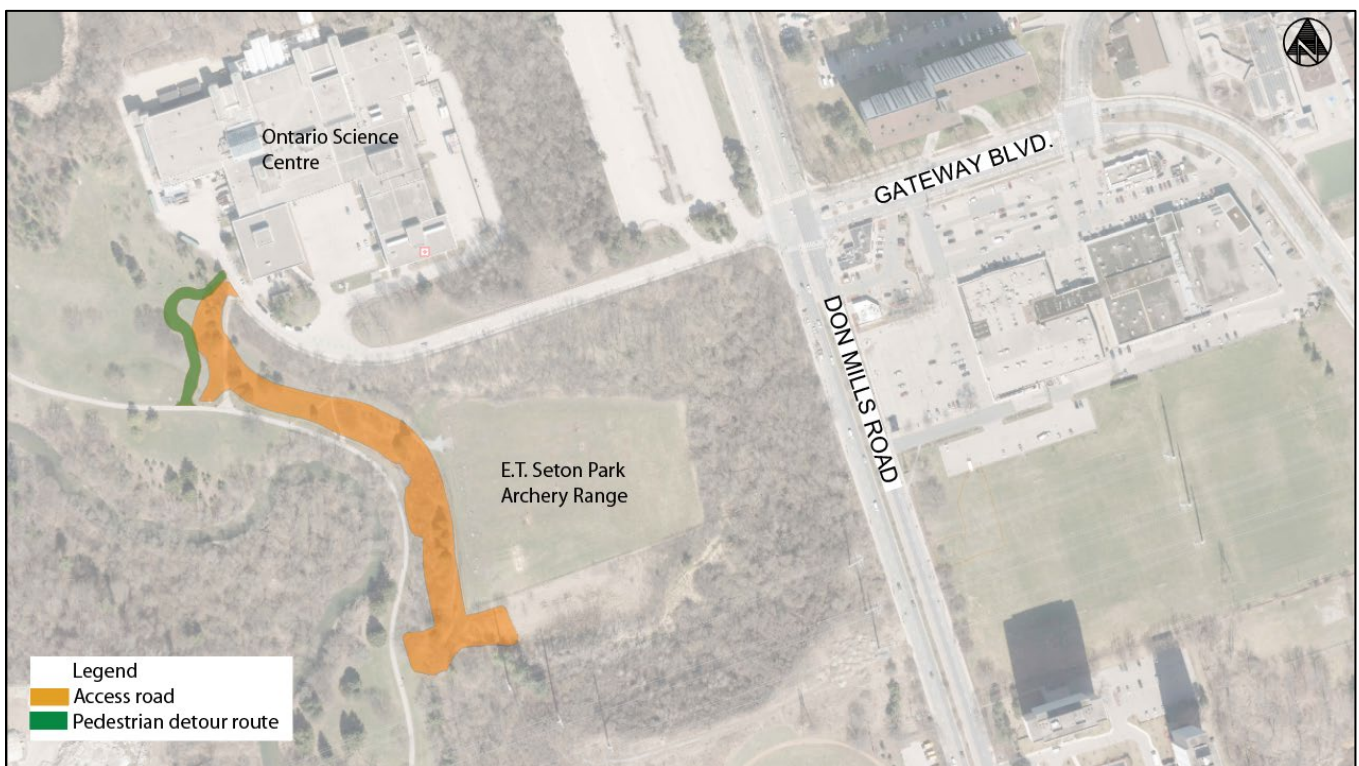
# Access Road Construction at E.T. Seton Park and West Don Crossing

**Expected start date:** As early as February 26, 2024

**Expected completion date:** Early May, 2024

**Hours of work:** 7:00 a.m. to 5:00 p.m.

**Days of work:** Monday to Friday with some Saturday work as required



## What is happening?

- As early as February 26, 2024, crews will begin building a new access road parallel to the current West Don Trail and a new pedestrian detour route from the Ontario Science Center parking lot to connect to the West Don Trail.
- This access road is required to facilitate utility relocation and future construction of the West Don Crossing, one of the bridges that will carry Ontario Line subway trains across the valleys in the northern part of the line.
- Construction activities will include excavation and grading.

- This work will take approximately two and a half (2.5) months to complete.

## What to expect

- Work will be done using dozers, excavators, dump trucks, rollers, backhoes, and graders.
- Expect noise from the construction equipment mentioned above.
- There will be no lane closures or impacts to the Ontario Science Center parking lot.
- A detour for the Ontario Science Center to West Don Trail connector will be constructed. After the detour is in place, the existing connector trail will be closed for access road construction. As work is adjacent to the existing West Don trail, caution should be exercised.
- Access points to the Archery Range will change through construction but pedestrian access will always be maintained, and signage will be in place to direct Archery Range users.
- Work areas will be fenced off and secured to ensure public safety.
- Safety measures such as a flag person(s) and signage will be in place to ensure safety.
- Equipment will be left on site and will be secured and protected with fencing and safety signage.
- Work may be delayed or rescheduled due to unforeseen weather conditions.

## About the Ontario Line

- 15.6-kilometre subway line that will make it faster and easier to travel within Toronto and beyond.
- 15 stops and more than 40 connections to other transit, including GO train, subway, LRT, streetcar, and bus lines.
- Less than 30 minutes from one end of the line to the other.
- 28,000 fewer cars on the road each day.

### Contact us:

Call us 24/7 at: [416-202-5100](tel:416-202-5100)

Write to us at: [ontarioline@metrolinx.com](mailto:ontarioline@metrolinx.com)

Find us on Twitter, Facebook, and Instagram: [@ontarioline](https://www.instagram.com/ontarioline)

Visit the website: [www.metrolinx.com/ontarioline](http://www.metrolinx.com/ontarioline)

### Visit our community offices:

#### Riverside:

770 Queen St. E, Toronto, ON, M4M 1H4

General hours:

- Mondays, Tuesdays and Fridays: 9 a.m. to 5 p.m.
- Wednesdays and Thursdays: 10 a.m. to 6 p.m.

#### Thorncliffe Park:

East York Town Centre

45 Overlea Blvd., Toronto, ON M4H 1C3

Unit 153 (across from the Rogers store)

General hours

- Monday to Friday: 9 a.m. to 5 p.m.