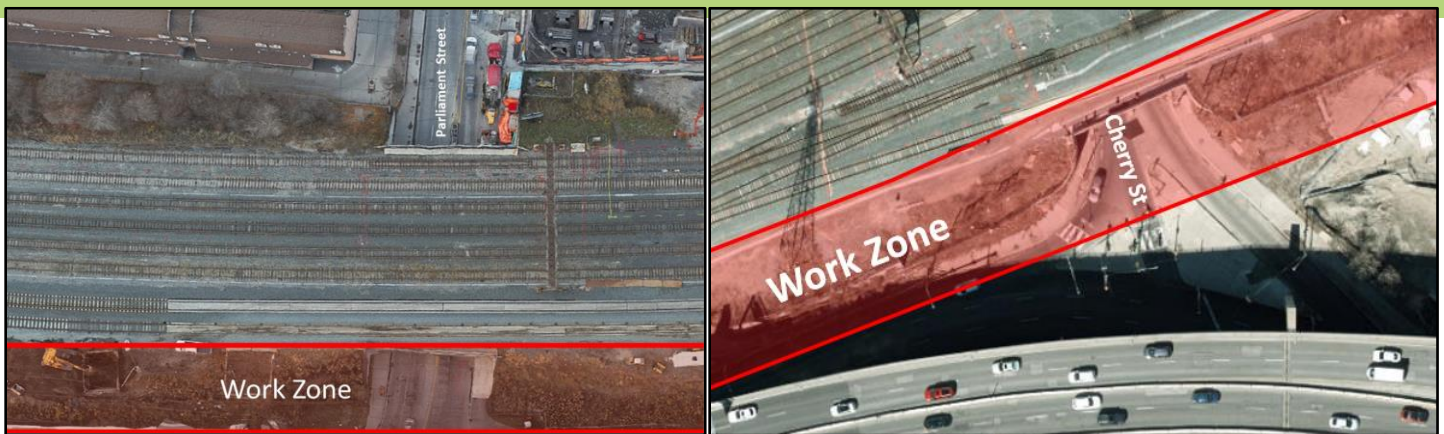


# Update Notice: Overnight Micropile Installation Work - Parliament Street and Cherry Street

Ongoing into April 2024 (timeline subject to change)



## What is happening?

Continuing into the summer of 2024, there will be increased construction activity at street level on Parliament Street and Cherry Street south of the rail corridor, as work crews will begin early works to prepare for the erection of utility bridges at each street.

To facilitate this needed work, micropiles will need to be installed south of the rail corridor, north of the Gardiner Expressway, at both Parliament Street and Cherry Street. Micropiles are deep foundation elements, often made of steel or concrete, used to support structural loads. For this activity, the micropiles will be installed to support the load of the future hydro utility bridge. This activity will take approximately 7 weeks to complete. As construction is underway, work locations may alternate between Cherry Street and Parliament Street. Due to the nature of this work and sequence of tasks, some activities will need to take place overnight when there is no train service. Residents in this area may notice an increase in night work, partial alternating sidewalk closures, and noise impacts stemming from this work.

Other work in this area includes excavation and installation of the new Hydro One duct bank from Lower Sherbourne Street to east of Cherry Street, manhole installations, and Hydro One work to relocate existing overhead circuits.

## What does this mean for you?

The following includes a sequence of activities that will impact the area:

- Working hours: 8:00p.m. – 5:00a.m, Monday to Friday
- Installation of micropiles at Parliament Street and Cherry Street, south of the rail corridor, north of the Gardiner Expressway
- Adjacent communities may experience increased noise and dust during this period
- Partial alternating sidewalk closures on Parliament Street and Cherry Street as needed

**We appreciate your ongoing patience and understanding of this necessary work. Dates subject to change.**

## Long-Term Benefits

The East Track Enhancements are being completed as part of the Union Station Enhancement Project and larger GO Expansion Program.

We're removing and relocating infrastructure on the south side of the Union Station Rail Corridor east of Union Station and widening the rail bridges that pass over Lower Jarvis and Lower Sherbourne Streets.

The East Track Enhancements will pave the way for two additional sections of track to be installed along the southside of the Union Station Rail Corridor, to the east of Union Station which will increase capacity and allow for future electrification as part of the larger GO Expansion Program.

Work will take place within the rail corridor between Union Station and the Don Yard Maintenance Facility, located to the east. Work outside of the rail corridor will mostly be limited to the areas at Lower Jarvis and Lower Sherbourne Streets.

After the completion of the East Track Enhancements, Metrolinx will lay tracks, modernize the signalling system and electrify core segments of the GO rail network.

## Questions

If you have any questions or concerns about this work, please contact us as noted below. For more information on GO Expansion in your community, visit our website at [Metrolinx.com/GoExpansion](https://www.metrolinx.com/GoExpansion).

**Please scan the QR Code above to subscribe to our weekly e-Newsletter for updates.**



### Contact Us:

✉ Write to us at: [torontoeast@metrolinx.com](mailto:torontoeast@metrolinx.com);

☎ By telephone (416) 202-3900

🐦 Find us on Twitter [@GOExpansion](https://twitter.com/GOExpansion)

🌐 Visit the website: [www.metrolinx.com/projects-and-programs/go-expansion](https://www.metrolinx.com/projects-and-programs/go-expansion)

✉ Disponible en français sur demande. Si vous êtes intéressé, veuillez envoyer un courriel à: [torontoeast@metrolinx.com](mailto:torontoeast@metrolinx.com)