

**Ontario Line**

**CLC Meeting #11**

**Pape Avenue Junior Public School**

**January 30, 2024**

# Land Acknowledgement

Let us take a moment to acknowledge we are on lands that have been, and continue to be, home to many Indigenous Peoples including the Anishnabeg, the Haudenosaunee and the Huron-Wendat peoples.

We are all Treaty people. Many of us have come here as settlers, as immigrants or involuntarily as part of the trans-Atlantic slave trade, in this generation, or generations past.

We acknowledge the historic and continued impacts of colonization and the need to work towards meaningful reconciliation with the original caretakers of this land.

We acknowledge that Metrolinx operates on territories and lands covered by many treaties that affirm and value the rights of Indigenous communities, Nations and Peoples. We understand the importance of working towards reconciliation with the original caretakers of this land.

At Metrolinx, we will conduct business in a manner that is built on a foundation of trust, respect and collaboration.

# AGENDA

## 1. Welcome

- Land acknowledgement

## 2. Construction Updates

- THESL work

## 3. Sewer Relocation

## 4. Long-Term Noise Barrier

- Status update
- Mural update

## 5. Upcoming Activities

## 6. Issues Tracker

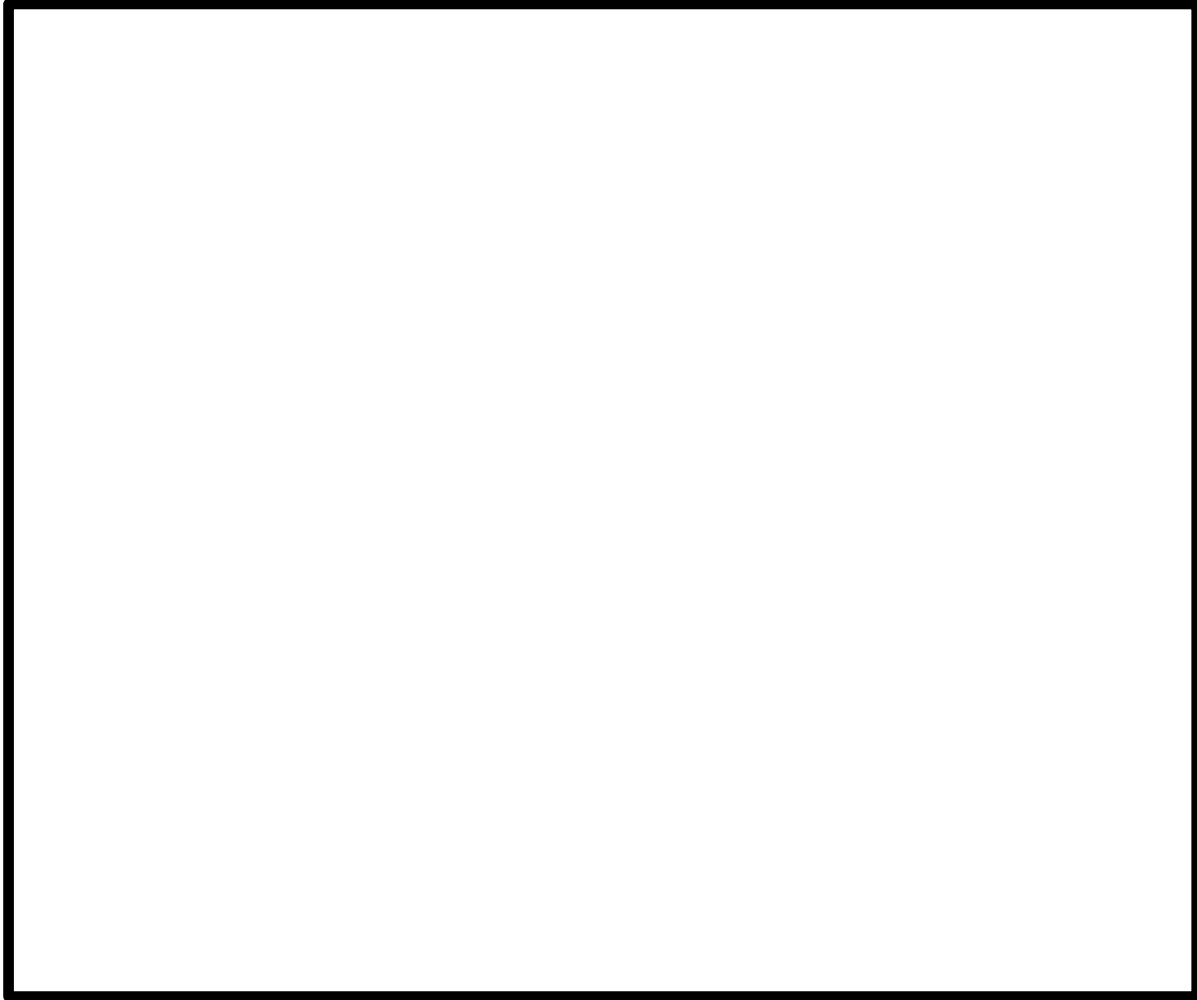
## 7. Discussion



# Construction Updates

## Upcoming THESL Work

- Toronto Hydro's existing duct bank along Pape Ave between Riverdale and Langley will be relocated to allow for the storm sewer relocation.
- Work will be paused during school drop-off (8:30 a.m. to 9:00 a.m.) and pick-up times (3:10 p.m. to 3:45 p.m.).
- All required permits have been received and work is expected to start in January 2024.
- Construction activities will include:
  - Sidewalk and road pavement cutting
  - Chamber rebuild
  - Directional drill work
- Equipment that will be used:
  - Saw cutting
  - Jack-hammers
  - Excavators
  - Hydrovac
  - Materials delivered by truck
- Additional details will be shared as soon as they are available.





# **Pape Avenue Jr PS Long-Term Noise Barrier**

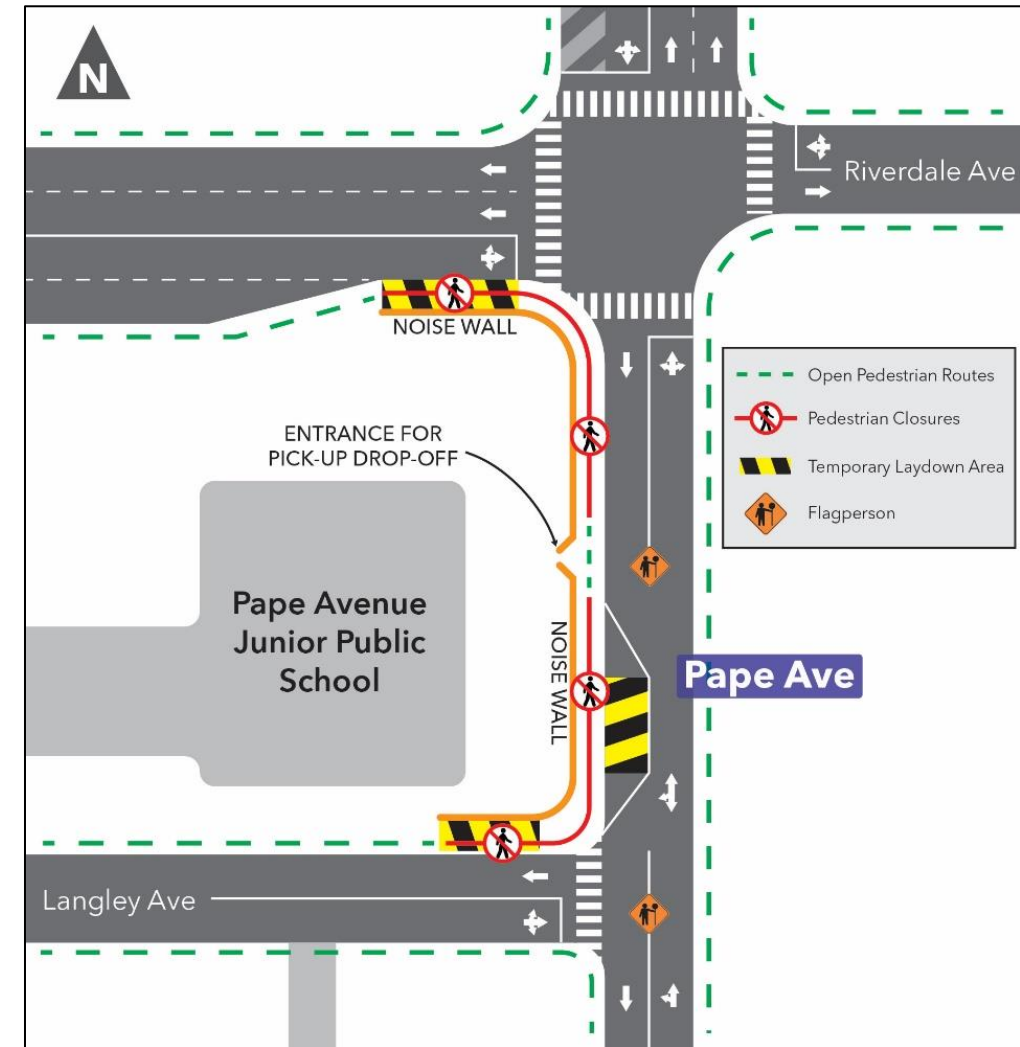
## Pape School Noise Barrier - Updates

### Construction:

- Construction will start once Enbridge work is completed.,
- Work is anticipated to begin December 18th.
- The expected duration to complete the work is 1.5 months.

### Mural:

- Metrolinx finalizing the mural proposal
- School will be engaged once a partner is selected
- Students will be part of the mural creation





# The Ontario Line

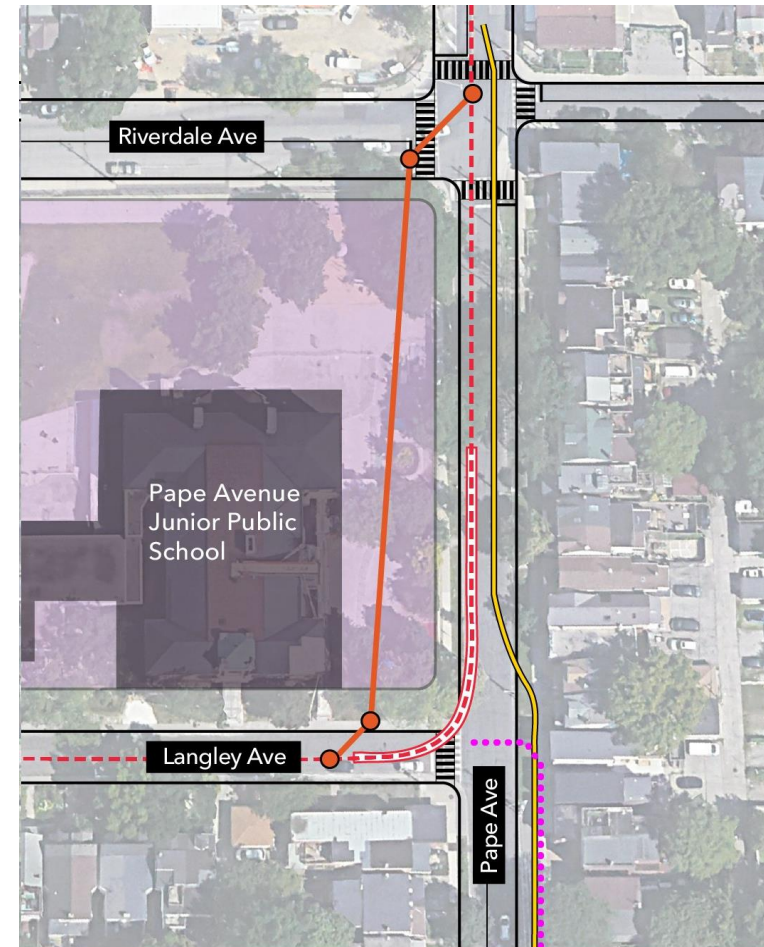
---



# Sewer Relocation

# Sewer Relocation Update

- A new storm sewer from Riverdale Ave to Langley Ave will be installed by micro-tunneling beneath the school property.
- Contractor is expected to be retained in February 2024.
- Work is anticipated to start in May 2024.
- Detailed information will be provided to the CLC and the community in the new year, including safety, construction and traffic management plans.



**Pape Ave Advanced Works**

- Proposed storm sewer
- Proposed combined sewer
- - - Existing storm sewer
- Proposed water main
- - - Storm sewer to be demolished
- ▭ School property boundary



## Upcoming Activities

- Metrolinx to circulate CLC meeting summary and action items by EOD Friday, January 2, 2024.
- Metrolinx to provide school and CLC with plan for the mural including student participation.
- Next CLC meeting to be scheduled for February 27, 2024.
- Details around mural workshop to be finalized.

## Issues Tracker - Items discussed during November 28, 2023, and Community Concerns

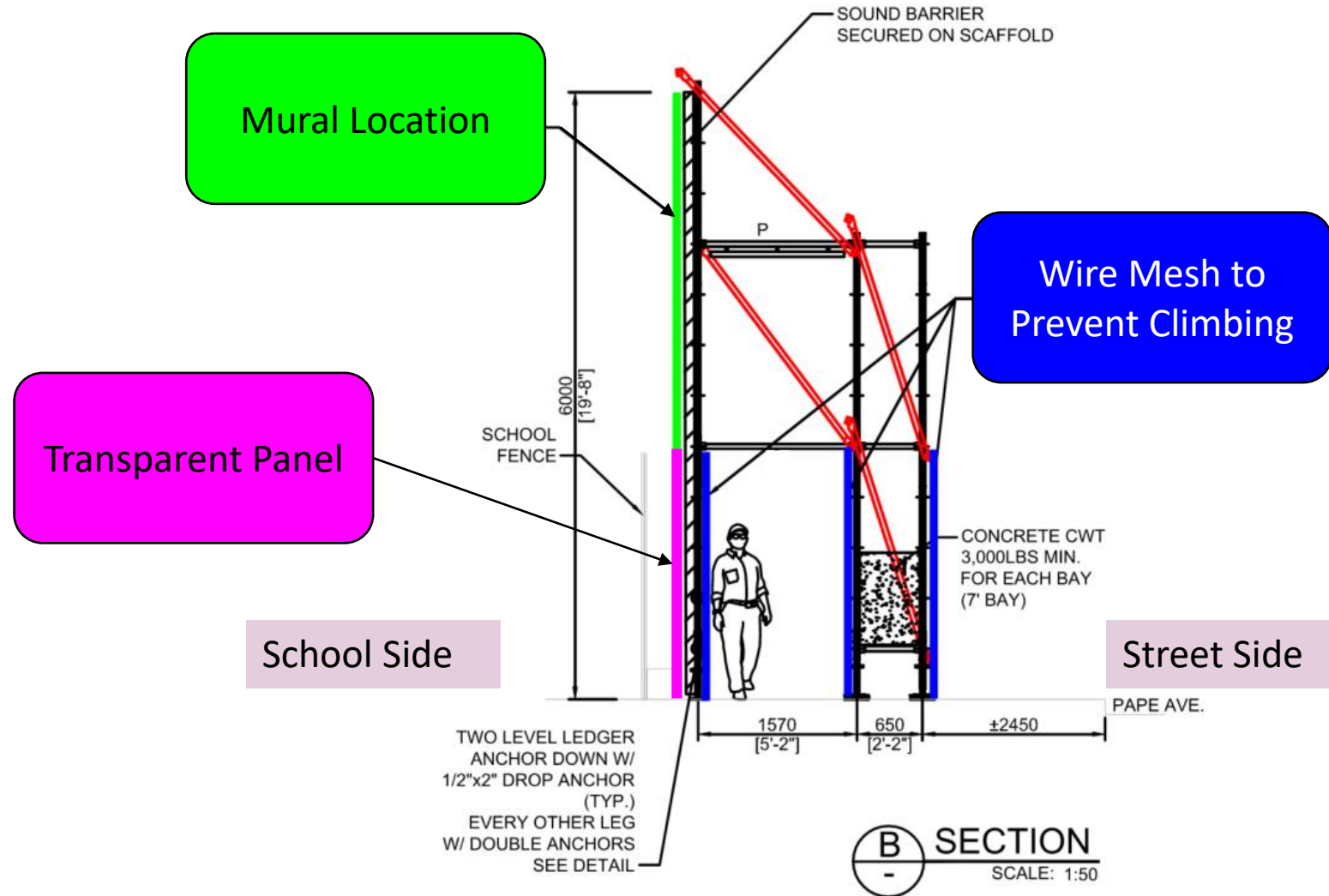
Action Item	Response/Resolution
Updated H&S plan to be shared by the end of January	
The installation of the scaffolding will pose challenges for school's caretaker to clean sidewalk area along Pape.	Metrolinx has committed to maintaining clear sidewalks through snow removals, ensuring entrance along Pape is fully accessible.
Metrolinx to share expected noise reduction once noise wall is in place and the levels in classroom (windows open).	
Metrolinx to finalize discrepancies between Mx and TDSB noise assessments	
Congestion at the Pape Riverdale intersection causing distraction and confusion among motorists and pedestrian.	Metrolinx dispatched additional traffic coordinator/PDO to assist in maintaining smooth flow of traffic and mitigate the risk of accident.
Workmen parking along Riverdale have made it challenging for residents to schedule deliveries. Suggest that Riverdale plaza be used for parking.	Metrolinx are open to accommodating residents upon request. Vehicles are parked along Riverdale to allow easy access to equipment and occasional quick warming breaks.
Action items and questions from noise workshop to be addressed and shared with the community.	
Pape Jr School Request that anti-climb measures be put in place prior to the completion of the wall.	



# Discussion



# Pape School Noise Barrier - Mural Placement



# Pape School Noise Barrier - Site Plan

