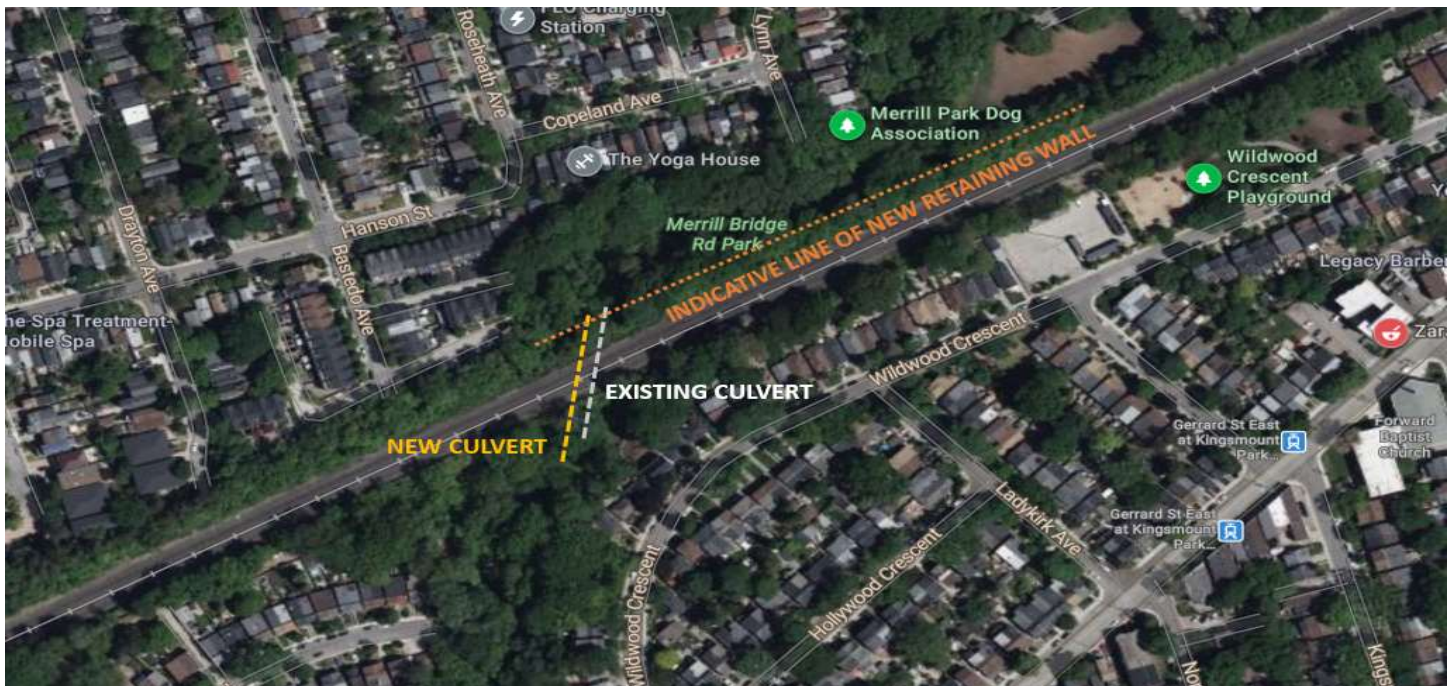


# Upcoming Overnight Work on Retaining Wall

March 2024 – September 2024



## Project Overview

GO Expansion will bring faster, more frequent train service by delivering new transit infrastructure and operational plans that will reduce journey times, add capacity, and further improve on-time performance and customer satisfaction. Progress is already being made, and our region is being transformed with \$11 billion of work currently underway to add more stations, more track, and enhance customer experience across the network. On our busiest routes, our goal is to create a network that has the capacity to deliver service every 15 minutes or better, in both directions, all day – meaning customers won't need to check a train schedule because they'll know that the next one will be along soon.

## What You Need to Know

As part of the improvement work for the GO Expansion project, crews will be constructing a retaining wall to prepare for future track installation and operational updates.

### Retaining wall construction

The railway line is on an embankment in this area. The retaining wall will support the weight of trains running on a new railway line that will be built on the north side of the existing lines (see graphic above). The railway corridor also needs to be wide enough to accommodate future overhead line electrification gantries. Construction of the retaining wall will involve earth-moving equipment, compaction, and shoring activities. This work may be disruptive to neighboring properties and we thank you for your patience while we complete this important work. The retaining wall will be approximately 6m at its highest point.

### What does this mean for you?

We will take precautions to minimize the effects of the construction activities on the local community, such as restricting the idling of nonessential equipment to reduce noise, limiting reverse operations, and pointing lights away from residential windows - but you may notice some noise, dust, and site lighting from the construction activities. Residents can expect to hear noises from construction vehicles, earth-moving equipment, and soil compacting operations. Noise and vibration monitoring has been set up to ensure that these levels are within exposure limits. Pedestrians are not expected to be affected by this work but should be vigilant of the increased number of construction vehicles.

Due to the increase in work activity starting in March, residents on Aldergrove Avenue, Moberly Avenue and Merrill Avenue will notice an increase in truck activity and vehicular traffic on these residential streets.

### Hours of Work

The work listed above will include a combination of day and night shifts, and weekend work may be required periodically. Day shift work will occur between the hours of 7:00 a.m. and 7:00 p.m. five (5) days per week (Monday to Friday) and night shift work, where required, will occur between the hours of 7:00 p.m. and 7:00 a.m. five (5) days per week (Sunday to Thursday). Please exercise caution around active construction sites. If you have any questions or concerns about this work, please contact us any time at [TorontoEast@metrolinx.com](mailto:TorontoEast@metrolinx.com). For more information on GO Expansion in your community, visit our website at [www.metrolinx.com](http://www.metrolinx.com).

#### Contact Us:

✉ Write to us at: [torontoeast@metrolinx.com](mailto:torontoeast@metrolinx.com)

🐦 Find us on Twitter [@GOExpansion](https://twitter.com/GOExpansion)

📄 Visit the website: [www.metrolinx.com/lakeshoreeastrailcorridor](http://www.metrolinx.com/lakeshoreeastrailcorridor)

📞 Call our team at: 416-202-3900

✉ Disponible en français sur demande. Si vous êtes intéressé, veuillez envoyer un courriel à: [torontoeast@metrolinx.com](mailto:torontoeast@metrolinx.com)