

Pile drilling at Moss Park

Expected start date: As early as March 25, 2024

Hours of work: Weekdays from 7:00 a.m. to 7:00 p.m.

Expected completion: End of July 2024

JOIN US FOR A MOSS PARK VIRTUAL PUBLIC INFORMATION SESSION MARCH 20, 2024

For more information about the Ontario Line construction happening at Moss Park, Metrolinx and its Ontario Line constructor, the Ontario Transit Group, welcome you to a Virtual Public Information Session on March 20, 2024, from 6:30 p.m. to 7:30 p.m. ET.

Please register at metrolinx.com/ontarioline and click on **Events** for details or scan the QR to the right:



What is piling?

- Crews will be drilling to install structural walls - also known as secant pile walls - to support the underground excavation of the Ontario Line station at the future Moss Park station.
- A secant pile wall is a type of retaining wall used to secure the soil and ensure water tightness prior to excavation.
- The process consists of drilling a series of holes and filling them with concrete to create overlapping (secant) piles that form a continuous structural wall.
- Some of the piles are further reinforced with steel beams.
- This work is performed prior to excavation to prevent ground settlement.
- Work will begin first on the southeast perimeter of the site, (Sherbourne Street & Queen Street East) and moving clockwise around the remaining perimeter.



Example of a pile drilling rig

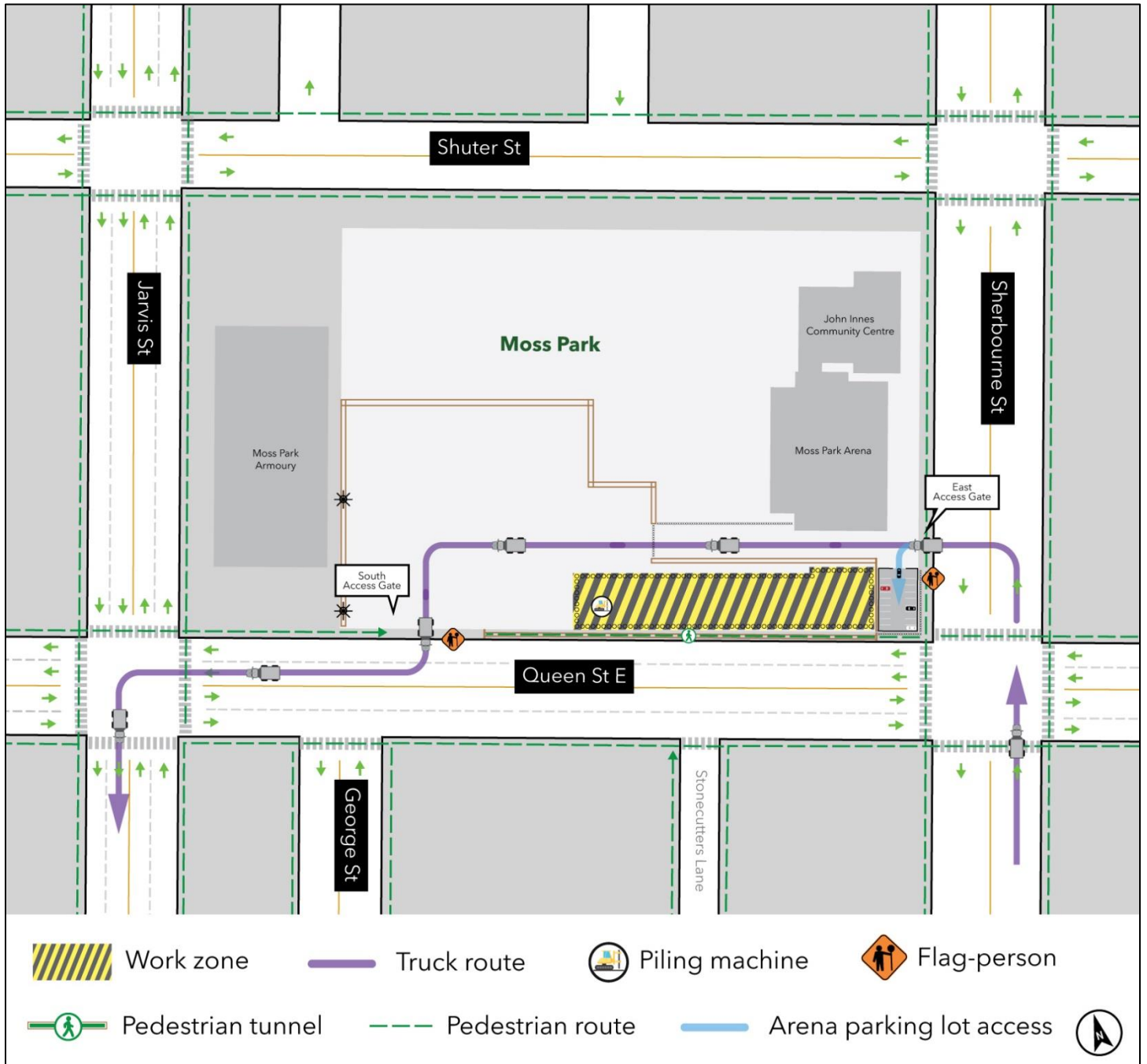
What to expect

- Work is expected to take place weekdays between 7:00 a.m. and 7:00 p.m.
- Additional work hours may be required to allow teams to complete consecutive works, such as a concrete pour in progress. Working hours are not expected to extend beyond 11:00 p.m.
- Crews are expected to be onsite prior to 7:00 a.m. to set up equipment.
- Noise from equipment drilling piles, removing spoils and concrete work is expected.
- Residents will see drilling machines, cranes, excavators, concrete pumps, and concrete trucks on-site during this phase of work.
- Several trucks will be entering and leaving worksites daily, following a specified route.
- Access to the arena parking lot will be maintained.
- To reduce impacts to residents and businesses in the area, mitigations are in place including noise and vibration monitoring, no overnight work and site hoarding.
- Work may be postponed or rescheduled due to unforeseen circumstances.

Truck routing

Truck routing is illustrated in purple, in effect from April 2024 to July 2024.

- To maintain site safety, the east access point at Queen Street East and Sherbourne Street and the southwest access point on Queen Street East and George Street will be staffed by flag-persons when trucking is in effect. This will allow for pedestrians to safely pass and trucks to enter site or merge into traffic when exiting the site.



About the Ontario Line

- 15.6-kilometre subway line that will make it faster and easier to travel within Toronto and beyond.
- 15 stops and more than 40 connections to other transit, including GO train, subway, LRT, streetcar, and bus lines.
- Less than 30 minutes from one end of the line to the other.
- 28,000 fewer car trips each day.

Contact us:

Call us 24/7 at: [416-202-5100](tel:416-202-5100)

Write to us at: ontarioline@metrolinx.com

Find us on X, Facebook, and Instagram: [@ontarioline](https://www.instagram.com/ontarioline)

Visit the website: www.metrolinx.com/ontarioline

Visit our community office:

770 Queen Street East (near Queen & Broadview)

General hours:

- Mondays, Tuesdays, and Fridays: 9:00 a.m. to 5:00 p.m.
- Wednesdays and Thursdays: 10:00 a.m. to 6:00 p.m.

Disponible en français sur demande. Si vous êtes intéressé, veuillez envoyer un courriel à ontarioline@metrolinx.com.