

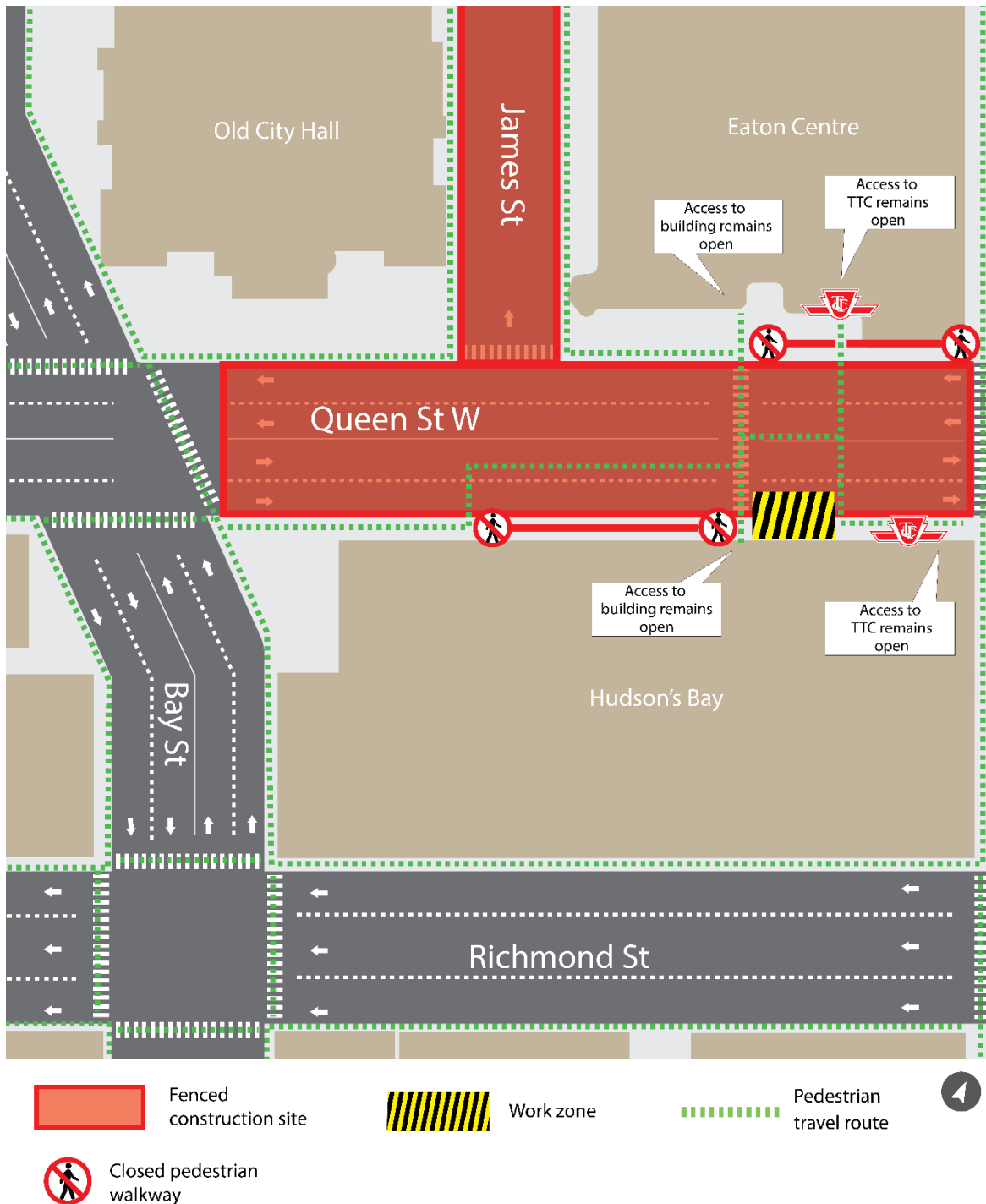
Ground testing near Hudson's Bay

Expected Start Date: March 18, 2024

Expected End Date: March 20, 2024

Planned work hours: Weekdays, overnight from 6:00 p.m. to 5:00 a.m.

Map of work area:



What is happening?

- To prepare for construction of the future Ontario Line subway access at Queen Station, construction crews will be conducting ground testing on Queen Street East to investigate the foundation and soil underneath the sidewalk.
- Crews will use a hydrovac to create a hole in the sidewalk, in order to extract, visualize and test visualize the ground underneath.
- Once works are complete, the area will be restored.

What to expect

- The work is scheduled to take overnight, and will take place on March 18, 2024. It is estimated to take up to two work shifts to complete.
- Pedestrians will be directed through the current work zone as indicated in the map above. Temporary fencing will be installed to ensure the safety of the pedestrians.
- Crews may be on site prior to 6:00 p.m. to set up equipment and prepare for the upcoming work shift.
- Equipment such as a hydrovac truck and some small portions of drilling may be used for this work.
- Work may be postponed or rescheduled due to unforeseen circumstances.
- All the necessary construction permits have been obtained.
- For more information about upcoming station work please see [metrolinx.com/Ontarioline](https://www.metrolinx.com/Ontarioline) or sign up for the e-newsletter.

About the Ontario Line

- 15.6-kilometre subway line that will make it faster and easier to travel within Toronto and beyond.
- 15 stops and more than 40 connections to other transit, including GO train, subway, LRT, streetcar, and bus lines.
- Less than 30 minutes from one end of the line to the other.
- 28,000 fewer car trips each day.

Contact us:

Call us 24/7 at: 416-202-5100

Write to us at: ontarioline@metrolinx.com

Find us on Twitter, Facebook & Instagram: @ontarioline

Visit the website: www.metrolinx.com/ontarioline

Visit our community office:

770 Queen Street East (near Queen & Broadview)

General hours:

- Mondays, Tuesdays, and Fridays: 9 a.m. to 5 p.m.
- Wednesdays and Thursdays: 10 a.m. to 6 p.m.

Disponible en français sur demande. Si vous êtes intéressé, veuillez envoyer un courriel à OntarioLine@metrolinx.com