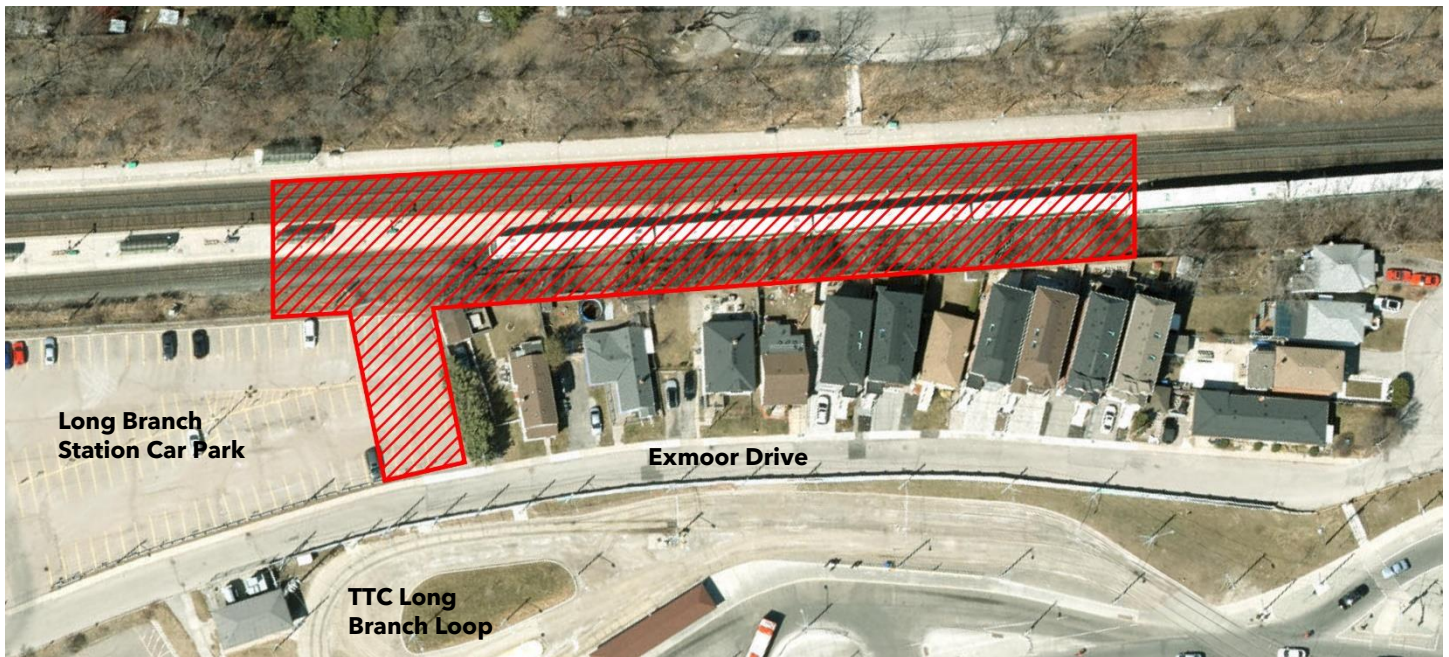


Overnight Work: Micro-Piling at Long Branch GO Station

March 2024



An aerial image showing the work zone. The work zone depicted is approximate and for illustrative purposes only.

Project Overview

Metrolinx's GO Expansion program is delivering more GO service across the network, including trains every 15- minutes or better on the Lakeshore West Rail Corridor. To support GO Expansion, we are upgrading the rail network and our GO stations to enable more frequent and fully accessible service. This includes accessibility and amenity improvements to Toronto's Long Branch GO Station located at 20 Brow Drive in Etobicoke.

What Work is Taking Place?

At the beginning of March, micro-piling will take place at Long Branch station in the area shown overleaf. Twelve micro-piles will be drilled, a steel bar will be placed inside the hole and filled with concrete. Steel

caps will be placed on top, allowing for the placement of temporary rail bridges. These rail bridges will be used to maintain rail service during future construction activities.

Construction Activity	Scheduled Start Date	Construction Window	Work Hours	Description of Work
Micro-piling/ capping	Mid-March	2 months	Overnight (7pm-5am) *Please note that this will not be every night	Thirty-Six (36) piles between the three tracks. Steel bars will be placed in the holes and filled with concrete. Metal caps will be placed on top of all micro-piles to prepare for placement of temporary rail bridges.
Track 3 realignment	March 22	3 days	Overnight (7pm-5am)	Realignment of track to allow for the construction of the new East platforms. Please note, this will require temporary closure of the Lakeshore West line in this area.
Temporary Rail Bridges	April 15	2 months	Overnight (7pm-5am) *Please note that this will not be every night	Temporary rail bridges will be placed on-top of the micro-piles to allow for future construction activities of the rail tunnel
*Work starts are approximate, and work may be rescheduled due to weather conditions or unforeseen circumstances				
*Micro-Piling + Temporary Rail Bridges will be completed within a 2-month window. Note that this work will not be every day but completed within a 2-month window.				

What You Need to Know

HOURS OF WORK

- Construction work is expected to take place overnight Monday to Saturday between 7pm and 5am.
- For safety reasons, this work needs to take place overnight when there are less trains running along the Lakeshore West rail corridor.

WHAT TO EXPECT

- Residents should expect some noise, vibration, dust, and site lighting. Our staff will take reasonable precautions to minimize disturbances to residents and commuters, including but not limited to the following:
- Reduced idling of non-essential equipment
- Pointing lights away from residential windows
- The work area will be safely delineated.

TRAFFIC DETAILS

- Increased construction vehicles and equipment can be expected in the work area.

PEDESTRIAN DETAILS

- Pedestrians will not be impacted at this time.
- Please exercise caution around active construction sites.

COMMUNITY ENGAGEMENT

- Metrolinx has a dedicated community engagement team in place that works with residents and businesses in the Toronto West area. If you have any questions, please contact us using the information provided below.

This construction notice can be translated into a different language upon request by emailing us at TorontoWest@metrolinx.com.

Cet avis de travaux de construction est disponible en français. Si vous êtes intéressé, veuillez envoyer un courriel à TorontoWest@metrolinx.com.

Contact Us:

✉ Write to us at: TorontoWest@metrolinx.com

🐦 Find us on Twitter @GOExpansion

🌐 Visit the website: www.metrolinx.com/lakeshorewest

This construction notice can be translated into a different language upon request by emailing us at TorontoWest@metrolinx.com.

Cet avis de travaux de construction est disponible en français. Si vous êtes intéressé, veuillez envoyer un courriel à TorontoWest@metrolinx.com.

Contact Us:

✉ Write to us at: TorontoWest@metrolinx.com

🐦 Find us on Twitter [@GOExpansion](https://twitter.com/GOExpansion)

🌐 Visit the website: www.metrolinx.com/lakeshorewest