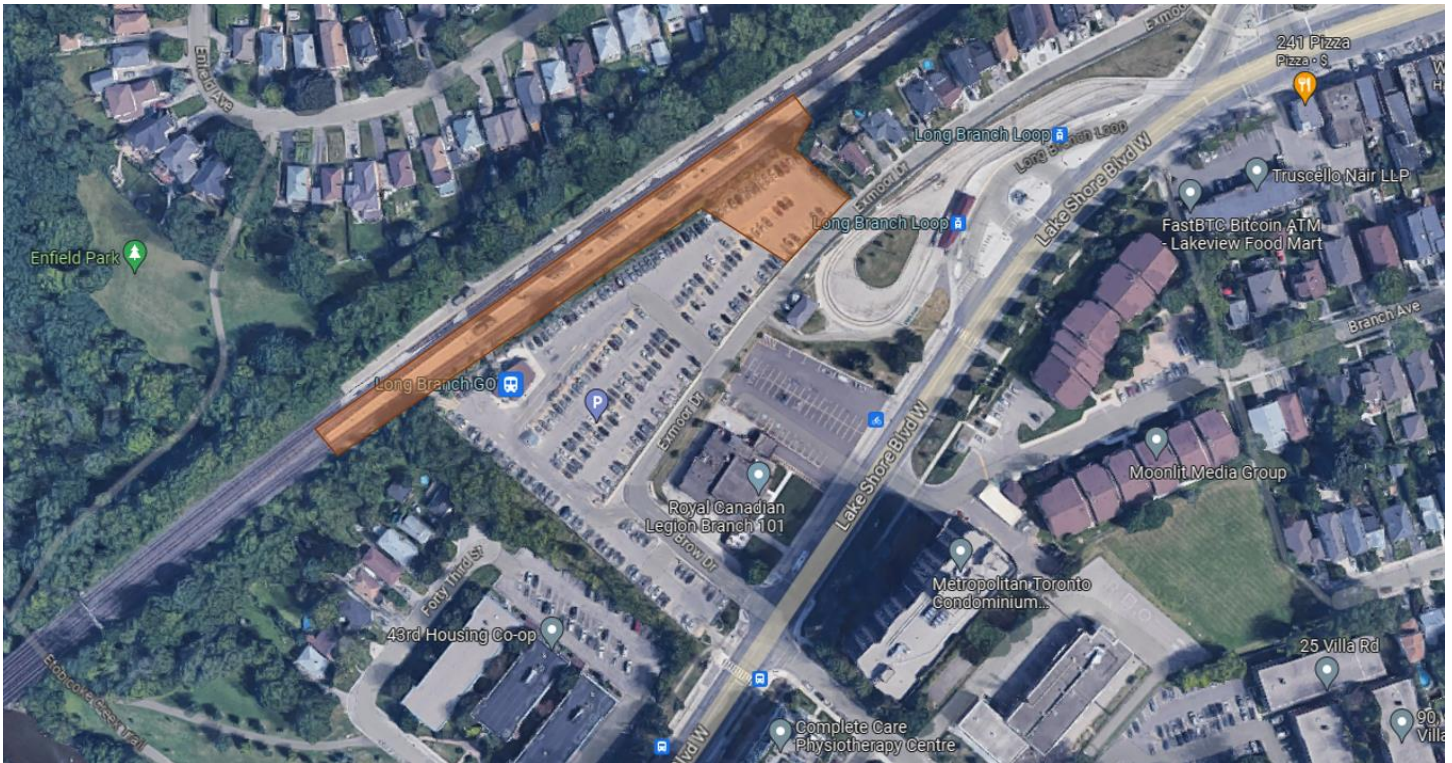


# Temporary Station Closure at Long Branch GO:

From March 22 to 25, 2024



*An aerial image showing the approximate extent of the work zone.*

## Project Overview

Metrolinx's GO Expansion program is delivering more GO service across the network, including trains every 15- minutes or better on the Lakeshore West Rail Corridor. To support GO Expansion, we are upgrading the rail network and our GO stations to enable more frequent and fully accessible service. This includes accessibility and amenity improvements to Toronto's Long Branch GO Station located at 20 Brow Drive in Etobicoke.

## What You Need to Know

From 10pm on March 22 until approx. 5am on March 25, Track 3 will be realigned and the south-west platform will be widened. Micro piling for the temporary rail bridges will still be on-going. The construction activities to realign the track will be continuous over this entire period, during the day and the night, so that we can reinstate the track on the Monday morning. Station Parking will be closed off and the platforms will be inaccessible.

## What to Expect

- We will be using 'railavators' and a 'tamper' to realign the existing track. We will also be using a dump truck and/or ballast car to distribute ballast along the construction area.
- Other equipment that will be used includes a front-end loader and construction support vehicles such as rail pullers and a mechanics truck which will be on standby.
- Residents should expect some noise, vibration, and dust.
- Site lighting will also be used for the duration of the construction activities.
- Our construction teams will take reasonable measures to minimize disturbances to residents.

## Hours of Work

- The work will be continuous from 10pm on March 22<sup>nd</sup> to approx. 5am on March 25<sup>th</sup>, with only brief periods of inactivity.

## Pedestrian Details

- Please note that Long Branch GO Station will be closed to the public from 10pm on March 22<sup>nd</sup> to approximately 5am on March 25<sup>th</sup>.
- Access to Long Branch GO Station from Edgeware Drive will be closed for safety.

## Mitigation Measures

- All construction equipment will be loaded and staged on site.
- Pointing lights away from residential windows.
- Work area will be safely delineated.
- Monitoring of construction noise and vibration.
- Street sweeper and cleaning as required.

## Traffic Details

- Construction vehicles and equipment will be active but mainly contained within the worksite.
- Please be aware that there may be a slight increase in deliveries to the worksite in advance of the main construction activities taking place.

## Transit Information

- The station will be closed for the duration of the construction activities but will reopen on Monday March 25<sup>th</sup> with normal GO Transit services.

## Community Engagement

- Metrolinx has a dedicated community engagement team in place that works with residents and businesses in the Toronto West area.
- If you have any questions, please contact us using the information provided below.

## Information as of: 29 February 2024

This notice can be translated into a different language upon request by emailing us at [TorontoWest@metrolinx.com](mailto:TorontoWest@metrolinx.com)

Cet avis est disponible en français sur demande. Si vous êtes intéressé, veuillez envoyer un courriel à [TorontoWest@metrolinx.com](mailto:TorontoWest@metrolinx.com)

### Contact Us:

Call us: 416-202-6911

✉ Write to us at: [TorontoWest@metrolinx.com](mailto:TorontoWest@metrolinx.com)

🐦 Find us on Twitter [@GOExpansion](https://twitter.com/GOExpansion)

🌐 Visit the website: [www.metrolinx.com/longbranch](http://www.metrolinx.com/longbranch)

📧 Subscribe to our e-blast: [www.metrolinx.com/subscribe](http://www.metrolinx.com/subscribe)