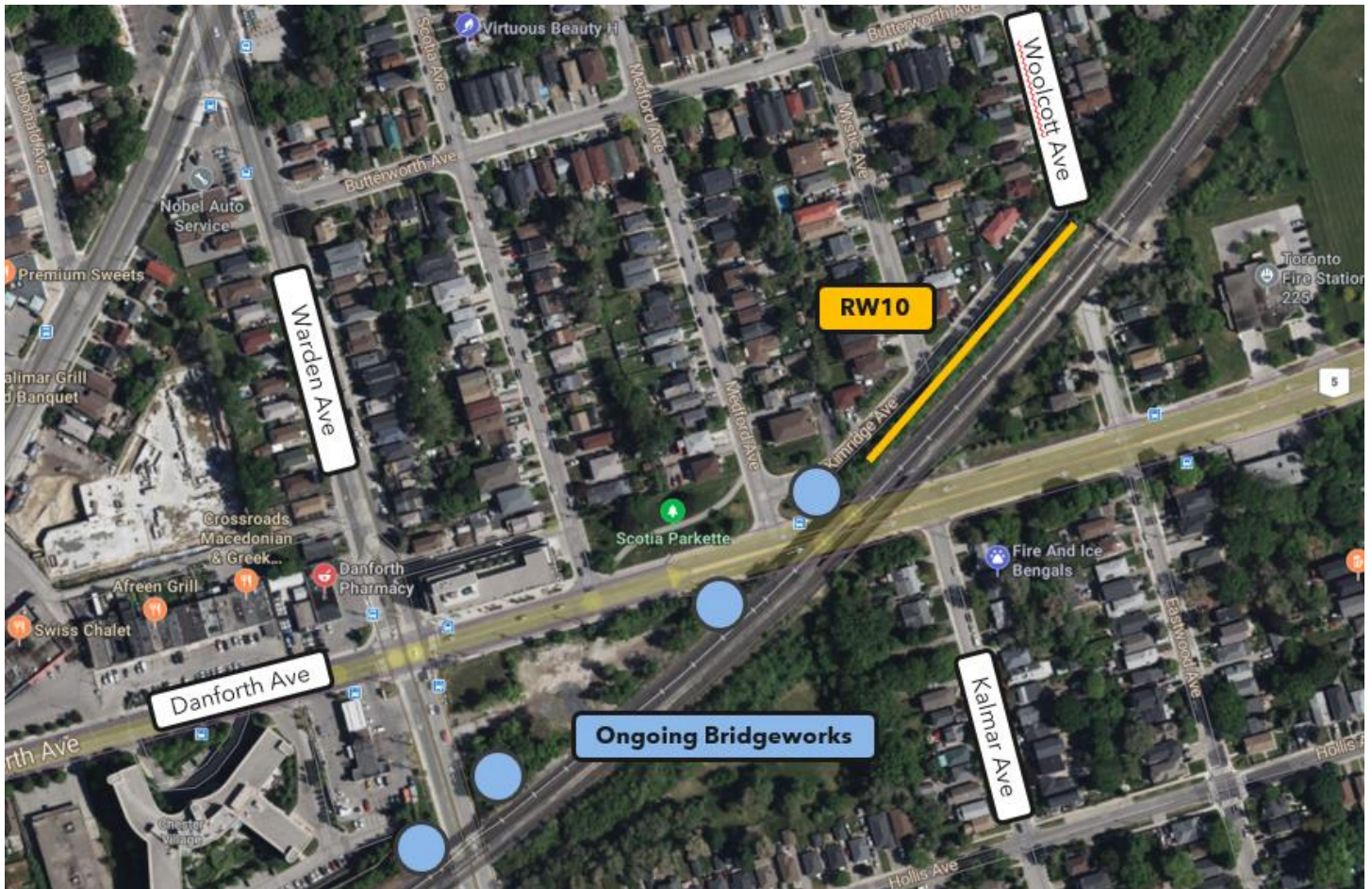


# Construction of Retaining Wall 10

March-August, 2024



## Project Overview

Metrolinx's GO Expansion program is delivering more GO service across the network, including trains every 15- minutes or better on the Lakeshore East Rail Corridor. To support GO Expansion, we are upgrading the rail network and our GO stations to enable more frequent and fully accessible service. To enable this improved service, we must widen the Warden and Danforth Bridges and the railway corridor in this area to build an additional railway track.

## What Work is Taking Place?

We have started to carry out construction activities on Retaining Wall 10 (shown as RW10 on the plan overleaf).

Construction activity	Scheduled Start Date	Expected Duration	Work Hours	Description of Work
Retaining wall 10	Construction underway	5 months	Day and night shifts	Construction of the 'cast-in-place' retaining wall will require excavation, building of concrete forms and pouring of concrete.
Work durations are approximate, work may be rescheduled due to weather conditions or unforeseen circumstances.				

## What You Need to Know

### HOURS OF WORK

The work listed above will include a combination of day and night shift. Day shift work will occur between the hours of 7:00 a.m. and 7:00 p.m. five (5) days per week (Monday to Friday) and night shift work, where required, will occur between the hours of 7:00 p.m. and 7:00 a.m. five (5) days per week (Sunday to Thursday).

Please exercise caution around active construction sites. We apologize for the inconvenience.

### TRAFFIC DETAILS

Increased construction vehicles and equipment can be expected on local roads and in the vicinity of the work area.

### PEDESTRIAN DETAILS

There may be some sidewalk closures during the works.

Please exercise caution around active construction sites.

### WHAT TO EXPECT

Residents should expect some noise, vibration, dust, and site lighting.

Our staff will take reasonable precautions to minimize disturbances to residents and commuters, including but not limited to the following:

- Reduced idling of non-essential equipment
- Pointing lights away from residential windows
- Limiting of reversing operations

### COMMUNITY ENGAGEMENT

Metrolinx has a dedicated community engagement team in place that works with residents and businesses in the Toronto East area. If you have any questions, please contact us using the information provided below.

This construction notice can be translated into a different language upon request by emailing us at [TorontoEast@metrolinx.com](mailto:TorontoEast@metrolinx.com).

Cet avis de travaux de construction est disponible en français. Si vous êtes intéressé, veuillez envoyer un courriel à [TorontoEast@metrolinx.com](mailto:TorontoEast@metrolinx.com).

#### Contact Us:

- ✉ Write to us at: [TorontoEast@metrolinx.com](mailto:TorontoEast@metrolinx.com)
- 🐦 Find us on Twitter [@GOExpansion](https://twitter.com/GOExpansion)
- 🌐 Visit the website: [www.metrolinx.com/lakeshoreeast](http://www.metrolinx.com/lakeshoreeast)