

# East Harbour Transit Hub: Construction Update

March to August 2024

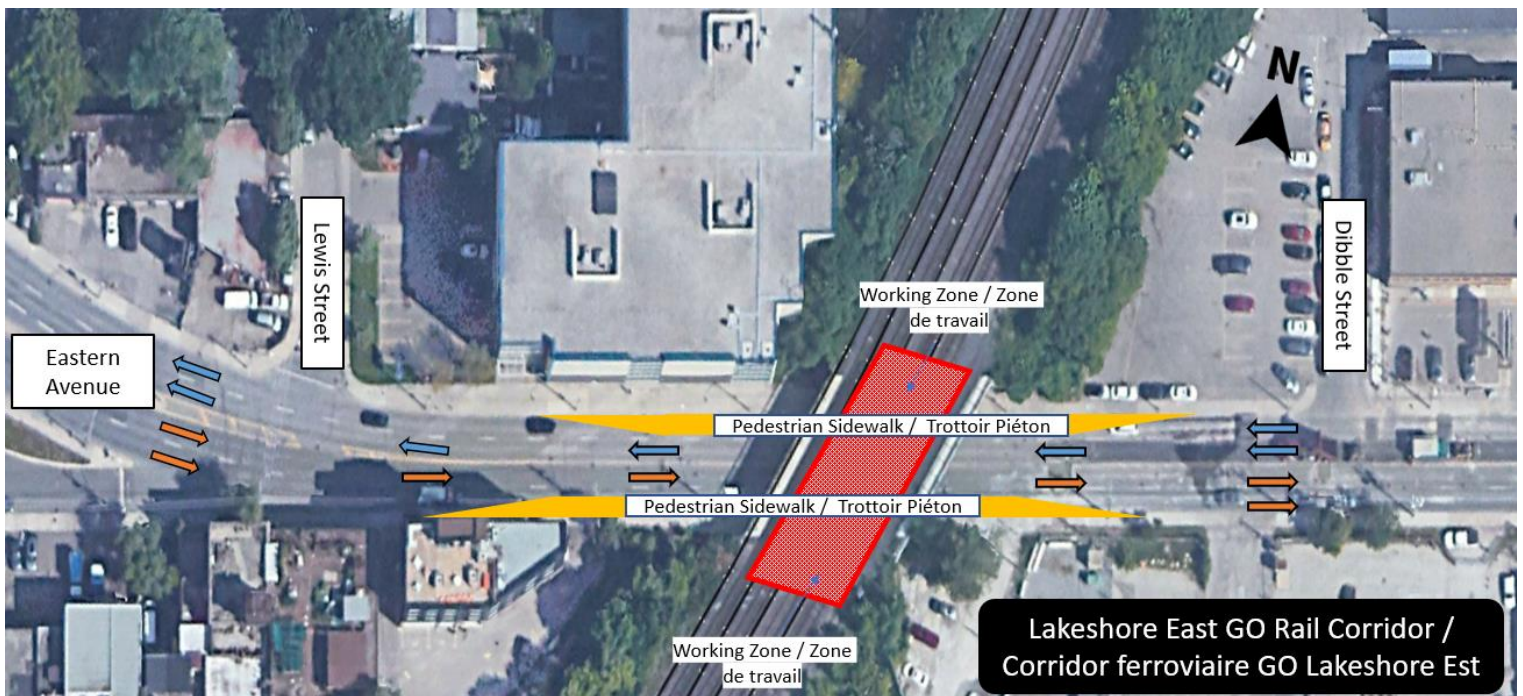


Figure 1: Aerial map showing long-term curb lane closure and sidewalk detour. For illustrative purposes only. Not to scale

## What Is Happening

As part of the ongoing construction of East Harbour Transit Hub, our crews will be continuing their work between the hours of 7:00 am to 5:00 pm, effective mid-March lasting until approximately end of August 2024. The construction zone is between Lewis Street to Dibble Street. The current curb-lane closures on Eastern Avenue remain in place until approximately October 2026. Residents should anticipate minimal construction noise from the machinery.

## Project Overview

The new East Harbour Transit Hub will be located just east of the Don River and north of Lakeshore Boulevard East, in the Riverdale neighbourhood. This interchange station, on the Lakeshore East GO line, will provide seamless connectivity to more GO services, the future Ontario line, and the TTC Broadview streetcar, in a corner of the city that is poised for growth. The East Harbour Transit Hub

will also divert some of the commuter traffic away from Union Station and will be an alternate station for transferring between transit lines and services.

### WHAT TO EXPECT

- Residents and business in the area should expect some noise, vibration, and dust.
- Our operation staff will take precautions to minimize disturbances to residents, businesses, and commuters, including but not limited to the following: no idling of non-essential equipment, pointing lights away from residential windows, and work areas will be safely delineated.

### HOURS OF WORK

- Daytime Monday to Friday: 7:00 am to 5:00 pm.
- Daytime Saturday: 7:00 am to 5:00 pm.

### LOCATION OF WORK

- On Eastern Avenue, between Lewis Street and Dibble Street.

### PEDESTRIAN DETAILS

- Pedestrians will be required to follow detour signs.

### TRAFFIC DETAILS

- From Lewis Street to Dibble Street, the Westbound and Eastbound curb lanes will be closed, and the sidewalks diverted.

### TRANSIT INFORMATION

- For more information visit [gotransit.com](http://gotransit.com) and [ttc.ca](http://ttc.ca)

### COMMUNITY ENGAGEMENT

- Metrolinx has a dedicated community engagement team that works with residents and businesses in the Toronto East area. If you have any questions, please contact us using the information provided below

**Information as of: March 8, 2024**

This notice can be translated into a different language upon request by emailing us at [TorontoEast@metrolinx.com](mailto:TorontoEast@metrolinx.com)

Cet avis est disponible en français sur demande. Si vous êtes intéressé, veuillez envoyer un courriel à [TorontoEast@metrolinx.com](mailto:TorontoEast@metrolinx.com)

#### Contact Us:

- ☎ Call us: **416-202-3900**
- ✉ Write to us at: [TorontoEast@metrolinx.com](mailto:TorontoEast@metrolinx.com)
- 🐦 Find us on Twitter and Instagram [@GoExpansion](https://www.instagram.com/GoExpansion)
- 🌐 Visit the website: [www.metrolinx.com/eastharbour](http://www.metrolinx.com/eastharbour)
- 📧 Subscribe to our e-blast: [www.metrolinx.com/subscribe](http://www.metrolinx.com/subscribe)