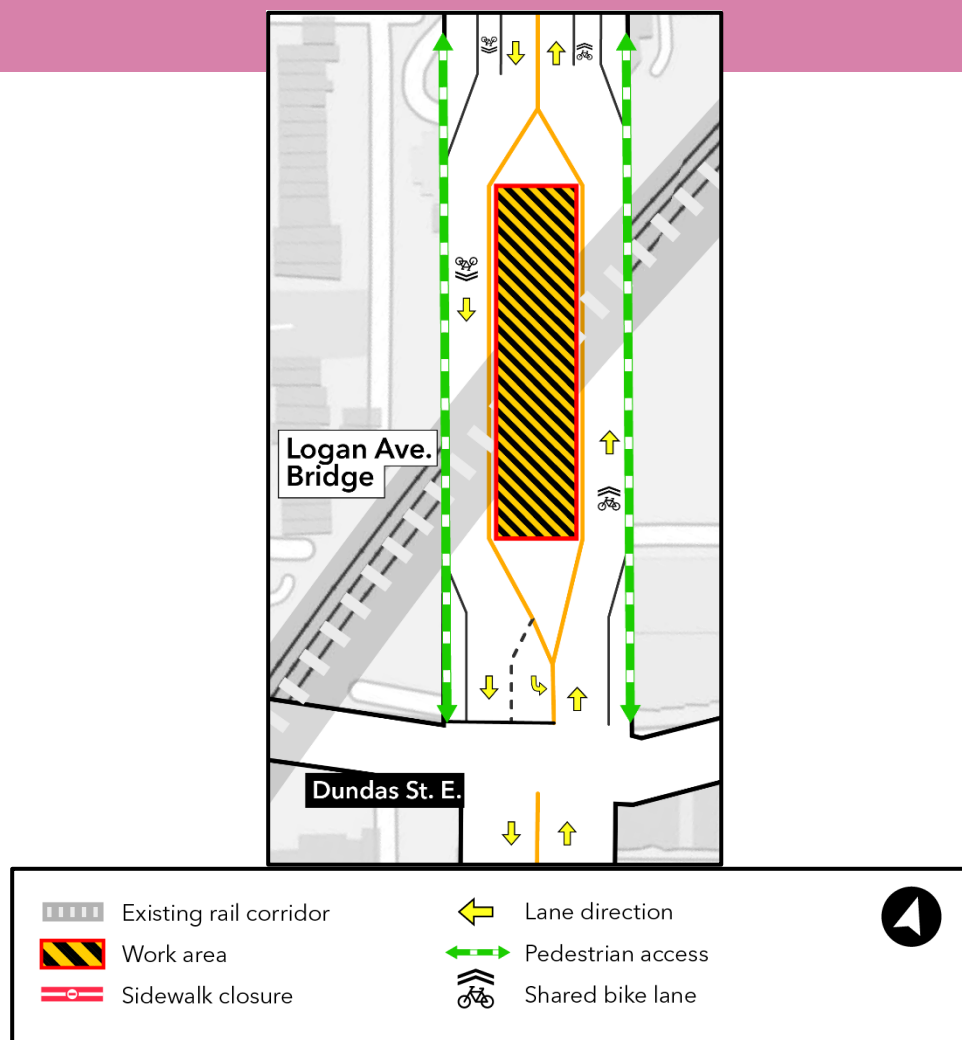


# Pier construction at the Logan Avenue bridge

**Expected start date:** Late March 2024

**Expected duration:** Three (3) months

**Hours of work:** Monday - Friday, from 7 a.m. - 7 p.m.



## What is happening?

- As early as late March 2024, construction of new bridge piers will begin in the middle of Logan Avenue.
- A drill rig will be used to construct the pier foundations below grade. The new piers will then be built out of steel and concrete.

- This work will take place Monday - Friday, between 7 a.m. - 7 p.m. for approximately three months.
- Traffic lane reductions and bike lane closures will remain on Logan Avenue. Please review the Traffic and Pedestrian details section below for further details.

## Traffic and pedestrian details

- Northbound and southbound cyclists will need to share the road with vehicles while travelling through this area. Share the road signs will be posted to guide cyclists. Drivers are reminded to slow down and allow cyclists to safely merge into the traffic lane. Do not attempt to pass cyclists.
- Traffic lanes will shift to the outer edges of the street.
- Traffic may be stopped for short durations during lifting operations or to facilitate the safe entry/egress of construction equipment.
- One traffic lane in each direction will be maintained on Logan Avenue.
- No sidewalk closures are expected.

## What to expect

- New piers will be constructed at the Logan Avenue bridge.
- To complete this work safely, work zones will be set up beneath the Logan Avenue bridge in the centre of the road.
- A crane will be used to set up the drill rig on Logan Avenue.
- After the pier foundations are constructed, rebar and steel structures will be installed beneath the bridge in the middle of the road. Concrete will be poured around these structures to create the new piers.
- Construction activities will include piling, drilling, rebar, steel, and formwork installations, and concrete pours.
- Noise from construction equipment including a drill rig, crane, trucks, pumps, and loaders can be expected.
- Temporary steel traffic barriers (guide rails) will be installed before the work starts to provide safe separation from the work zone. These temporary barriers will be drilled into the road; noise from this activity can be expected.
- Clear signage will be in place to direct vehicles, pedestrians, and cyclists.
- Parking restrictions on Logan Avenue beneath the rail bridge; replacement parking is available at 10 Dickens Street.
- Traffic barrels, fencing, and barriers will be in place to separate and secure work zones.
- Construction equipment and materials will be properly secured within the work zones.
- Traffic markings will be removed and painted on the roadway as required to guide motorists and cyclists.
- Work may be delayed due to weather conditions or unforeseen circumstances.

## About the project

- 15.6-kilometre subway line that will make it faster and easier to travel within Toronto and beyond.
- 15 stops and more than 40 transit connections, including GO, TTC, and more.
- Approximately 30 minutes from one end of the line to the other.
- 28,000 fewer cars on the road each day.

### Contact us:

Call us 24/7 at: [416-202-5100](tel:416-202-5100)  
 Write to us at: [ontarioline@metrolinx.com](mailto:ontarioline@metrolinx.com)  
 Find us on Twitter, Facebook, and  
 Instagram: [@ontarioline](https://www.instagram.com/ontarioline)  
 Visit the website:  
[www.metrolinx.com/ontarioline](http://www.metrolinx.com/ontarioline)

### Visit our community offices:

**770 Queen Street East (near Queen & Broadview)**  
 General hours:  
 Mondays, Tuesdays, and Fridays: 9 a.m. to 5 p.m.  
 Wednesdays and Thursdays: 10 a.m. to 6 p.m.

### Thorncliffe Park:

East York Town Centre  
 45 Overlea Blvd., Toronto, ON M4H 1C3  
 Unit 153 (across from the Rogers store)  
 General hours:  
 Monday to Friday, 9 a.m. to 5 p.m.