

GO Expansion

# Aurora GO & Yonge Street Bridge

## Construction Liaison Committee

February 9, 2024



# Agenda

## 1. Welcome

- Land Acknowledgement
- Safety Moment
- Introductions
- CLC Overview & Terms of Reference

## 2. GO Expansion

- What is GO Expansion?

## 3. Aurora GO Station Works

- Project Overview
- Current Activities
- Upcoming Work
- Q&A

## 4. Yonge Street Bridge Works

- Current Activities
- Upcoming Work
- Previous CLC Action Items
- Q&A

## 5. Next Steps

- Meeting Format & Frequency
- Contact Us

# Land Acknowledgement

Let us take a moment to acknowledge we are on lands that have been, and continue to be, home to many Indigenous Peoples including the Anishnabeg, the Haudenosaunee and the Huron-Wendat peoples.

We are all Treaty people. Many of us have come here as settlers, as immigrants or involuntarily as part of the trans-Atlantic slave trade, in this generation, or generations past.

We acknowledge the historic and continued impacts of colonization and the need to work towards meaningful reconciliation with the original caretakers of this land.

We acknowledge that Metrolinx operates on territories and lands covered by many treaties that affirm and value the rights of Indigenous communities, Nations and Peoples.

We understand the importance of working towards reconciliation with the original caretakers of this land. At Metrolinx, we will conduct business in a manner that is built on a foundation of trust, respect and collaboration.

# Safety Moment

When driving over a railway crossing always remember to:

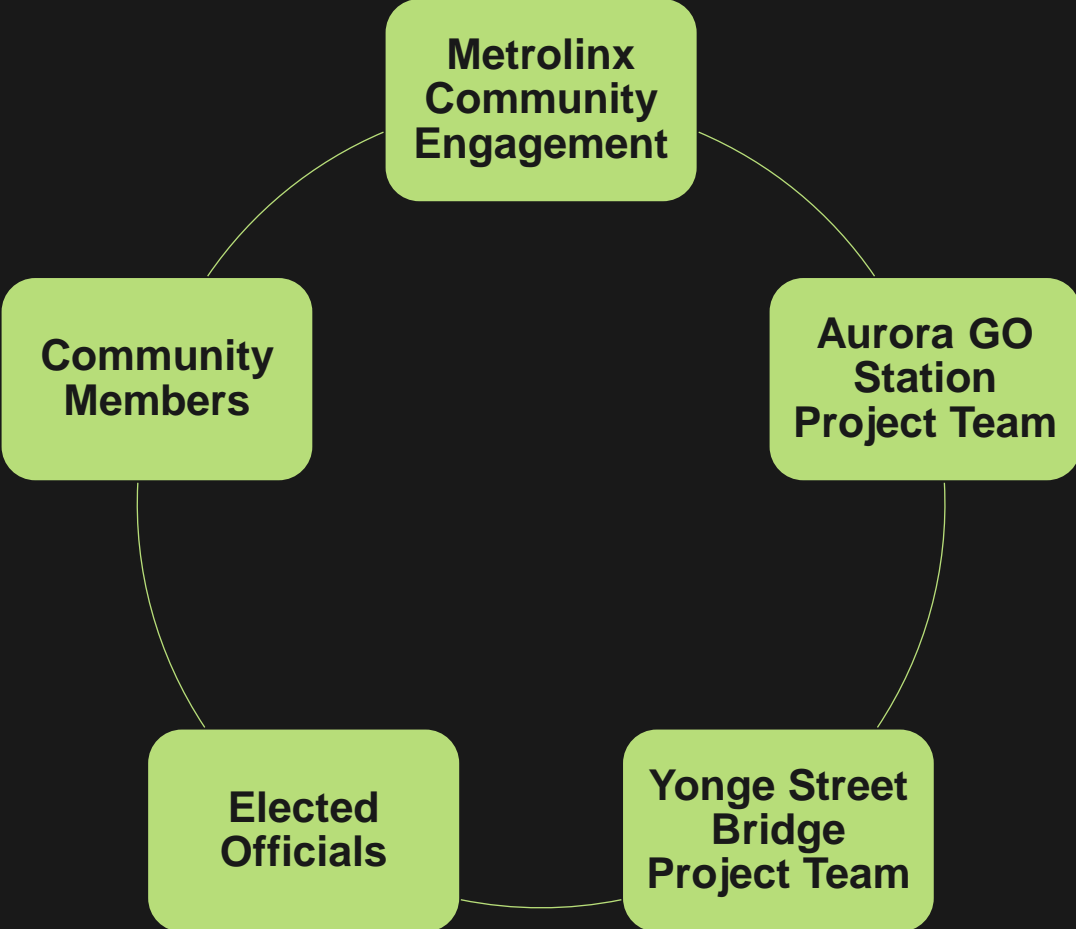
- Use caution when driving over train tracks and always obey crossing signals.
- When approaching a crossing in a vehicle, look both ways along the track for an oncoming train and be prepared to stop if required.
- When the warning lights are activated and a train is approaching, do not stop in the middle of the tracks under any circumstance—stop at least 5 metres from the nearest rail and proceed across the tracks only when the lights have stopped flashing and the tracks are clear.



**Safety is following  
the rules!**



# Introductions



# Construction Liaison Committee

The Aurora GO & Yonge Street Bridge Construction Liaison Committee (CLC) will serve as a forum to regularly share information through effective dialogue between Metrolinx and stakeholders, including elected officials, area residents and businesses, with opportunities to:

- Engage in two-way dialogue – Metrolinx to provide relevant information in a clear, accessible, and timely manner to committee members. Committee members to reflect the views of their wider communities in committee meetings, and pass on information gathered in meetings to those they represent.
- Identify and prioritize local needs and preferences to guide refinements of the construction plan and schedule.
- Disseminate information related to project milestones and construction activities.



## Community Representatives

- Residents and Associations
- Business Owners
- Transit Users



## Town of Aurora

- Elected Officials
- Town Staff



## Metrolinx Teams & Contractors

- Metrolinx Community Engagement
- Metrolinx Project Delivery Teams
- Contractors

# Terms of Reference

**1.0** Objective

**2.0** Scope

**3.0** Meeting Frequency

**4.0** Membership

**5.0** Responsibility

**6.0** Conflicts of Interest

**7.0** Code of Conduct & Confidentiality

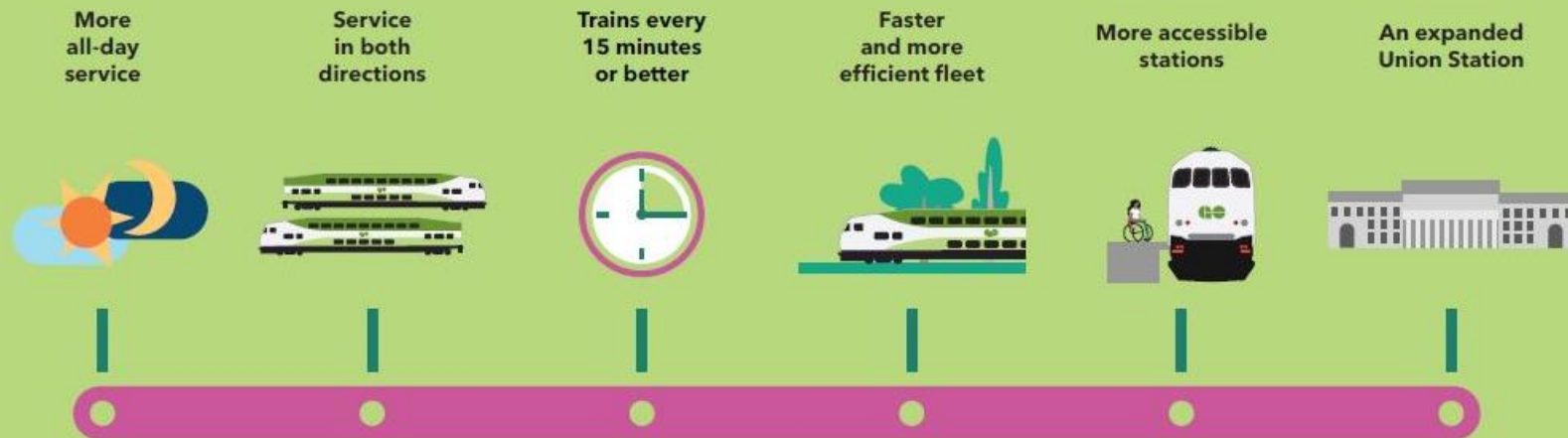
**8.0** Other

The Terms of Reference will be reviewed and updated as required to ensure that the objective and membership remain current and appropriate.

# What is GO Expansion?

Making travel through the Greater Golden Horseshoe better, faster, and easier!

- New tracks
- Faster, more frequent service, with capacity for service every 15 minutes or better on our core lines
- New and upgraded stations
- Electrification
- Connections to local and regional transit networks





# Aurora GO Station Works



# Project Overview

We're making improvements at Aurora GO Station that will accommodate more service options and provide better customer access.

These improvements include:

- A **second track** to allow for the increase of two-way service at Aurora GO and along much of the Barrie Line
- A newly constructed **west platform** with barrier-free connections as well as south pedestrian tunnels
- An extension of the **south pedestrian tunnels** (that were previously built in anticipation of this work) to connect the new west platform to the existing east platform
- A newly constructed **passenger pick-up/drop-off area**
- A **new exit at Berczy Street** which will improve passenger access and flow of traffic
- The addition of **380 new overflow parking spaces at 9 Scanlon Court (COMPLETE)**
- Installation of **edge tactile tile** for improved accessibility



The Aurora Train Station, around 1900, combined with what it looks like today. (Photo supplied by Aurora Museum & Archives (987.15.2) and On This Spot)

# Previous CLC Action Items

Action	Owner
<p><b>Aurora GO Station Building Plaques:</b> We are working with the Metrolinx Station Operations team to reinstate the plaques taken off the station building at Aurora GO.</p>	Metrolinx Community Engagement
<p><b>Aurora GO West Platform Renderings:</b> There are currently no renderings of the new west platform, but we will be getting some made.</p> <p>Once available, they will be shared publicly.</p>	Metrolinx Project Delivery Team



# Current Activities

## 1) Preparatory Work for Second Track

- Contractor began preparing the laydown area at 128 Centre Street and 19 Birch Court the week of January 29th.
- Starting the week of February 19<sup>th</sup>, Grascan will clear vegetation from the two addresses and begin grading work in the corridor. This will support the installation of the future second track.
  - Notices have been sent out to residents.
- There will be no impacts on scheduled train service.

## 2) 10 Scanlon Corridor Access

- Contractor is creating an access point through 10 Scanlon Court for machinery equipment to enter the corridor.
- A portion of the parking lot may be used as a laydown/storage area.
- There will be no impacts on scheduled train service.

**WORK HOURS: 7:00 AM to 5:00 PM, Monday to Friday.**  
**Weekend and overnight work may be required on occasion,**  
**but advance notice will be given when this is necessary.**



# Current Activities

## 3) Construction of Temporary Platform

- To support the future partial closure of the platform, the Contractor has been constructing a temporary platform, extending the existing platform further south within the rail corridor.
- Asphalt work will be commencing shortly for the temporary platform.
- Electronic installation (cameras, intercoms, etc.) will be installed along the temporary platform.
- This will not impact any scheduled train service.

**WORK HOURS: 7:00 AM to 5:00 PM, Monday to Friday.**  
**Weekend and overnight work may be required on occasion,**  
**but advance notice will be given when this is necessary.**





# Upcoming Work (Spring 2024)

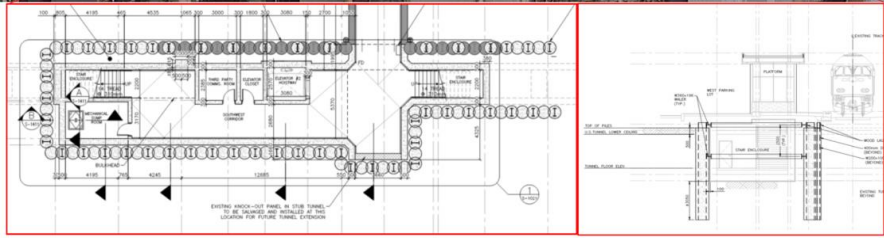
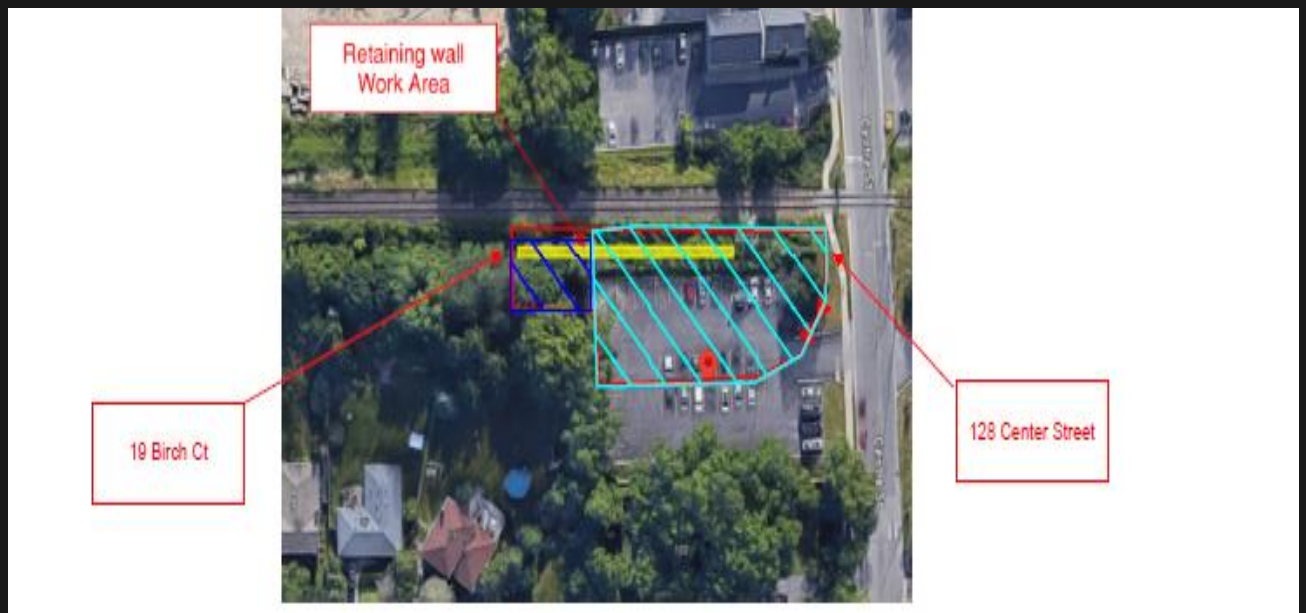
## Retaining wall installation

- Contractor will be installing a retaining wall in the corridor near 128 Centre St. Construction is set to commence by early spring.
  - Current grading work will support retaining wall installation.

## West tunnel construction

- Shoring installation will commence at the west tunnel area.
  - Shoring is the practice of building a temporary structure to support an unsafe structure on construction and excavation sites.
  - Drilling operations will be utilized for this application.
- The scope of the work in the area will consist of:
  - Caisson installation
  - Shoring system creation
  - Tunnel excavation
  - Tunnel construction

**WORK HOURS: 7:00 AM to 5:00 PM, Monday to Friday.**  
**Weekend and overnight work may be required on occasion, but advance notice will be given when this is necessary.**



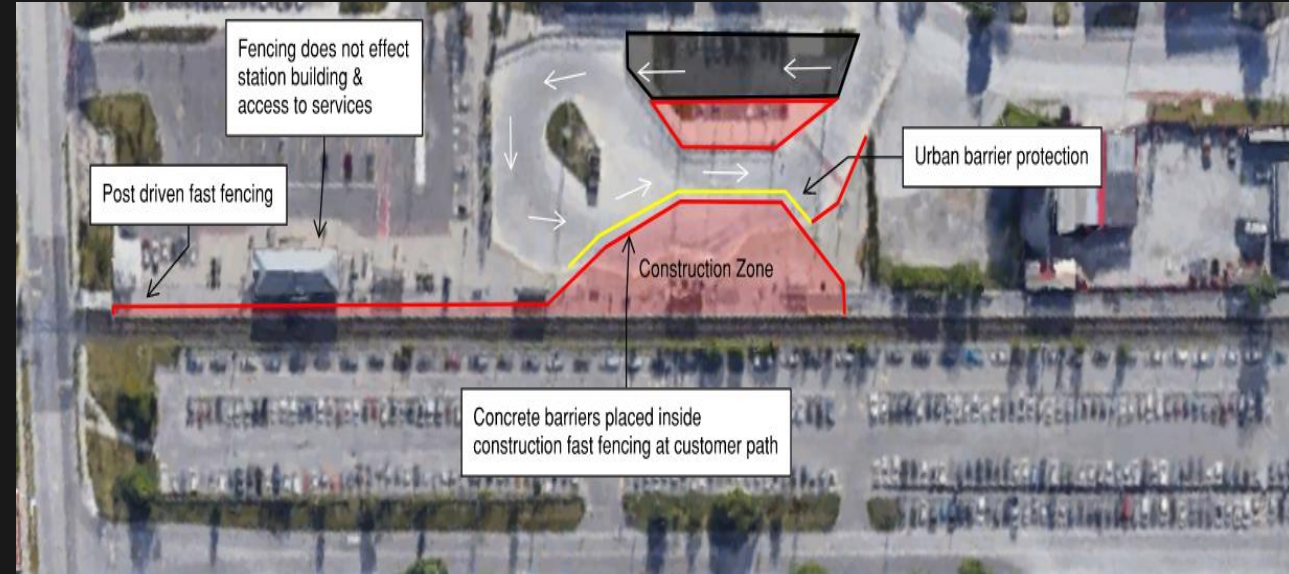


# Upcoming Work

## Partial Closure of Platform

- Platform closure from Wellington Street to contractor work zone with a portion of the bus loop (red area in photo).
- No traffic impacts on Wellington St. expected
- New temporary platform extension will have pedestrian directional signs through the bus loop and on the platform.
- Contractor will be constructing an emergency egress pathway from platform extension to municipal right of way to ensure passengers can leave in an emergency.
- Construction of new temporary mini ramp & removal of existing ramp.

**WORK HOURS: 7:00 AM to 5:00 PM, Monday to Friday.  
Weekend and overnight work may be required on occasion,  
but advance notice will be given when this is necessary.**





# Upcoming Work

## Emergency Egress Pathway

- Metrolinx Project Delivery Team (PDT) consulted with the Town of Aurora municipal staff for viable locations for the emergency egress.
- Confirmed location at Industrial Parkway South & Mary Street.
- Work will proceed in conjunction with the temporary platform.
- Currently in the design phase with Grascan Construction Ltd.

**WORK HOURS: 7:00 AM to 5:00 PM, Monday to Friday.  
Weekend and overnight work may be required on occasion,  
but advance notice will be given when this is necessary.**



# Being a Good Neighbour

## Day Time Work Hours

- Any disruptive work will be done during the day to minimize noise impacts on residents

## Noise & Vibration Monitoring

- Noise and vibration levels will be monitored at all times to ensure that they are within an acceptable level (determined by industry standards)

## Preventing Door Closures

- GO train door closures are sometimes needed to accommodate construction, however, this can be an inconvenience to our customers, requiring them to make their way to another coach in order to exit
- To prevent door closures resulting from the Tunnel Work Zone, the existing east platform will be temporarily extended so that northbound trains can stop south of the tunnel work zone

## Advance Notice through Construction Notices

- Anytime there is a major impact, a construction notice will be sent out two weeks in advance



# Questions & Discussion



# Yonge Street Bridge Works



# Previous CLC Action Items

Item	Owner
<p><b>Community Tree Plantings:</b></p> <p>We have connected with the Metrolinx Environmental Programs &amp; Assessment (EPA) and Restoration teams to explore the possibility of a community tree planting event in Aurora.</p> <p>Next steps:</p> <ul style="list-style-type: none"><li>• Metrolinx CE will reach out to the Town for a list of potential planting locations (must be on lands that will be held in perpetuity for conservation)</li><li>• Metrolinx Restoration team will evaluate whether the locations are viable planting locations</li></ul>	Metrolinx Community Engagement
<p><b>Dewatering at the Yonge Street Bridge:</b></p> <p>The need for dewatering is dependent on the foundation design. As the foundation design is not finalized, we will be able to confirm whether or not there will be dewatering at a later date.</p>	Metrolinx Project Delivery Team

# Current Activities

## Vegetation Removals (Sept 2023 to Mar 2025\*)

- Within and along the rail corridor between Bathurst Street and Engelhard Drive
- Expect to hear trucks, chainsaws, and woodchippers
- You may notice dots on trees that have been identified for removal
- \*Timeline has changed to allow for additional Indigenous consultation

## Lane Reductions at the Yonge Street Bridge for Vegetation Removals

- A small section of the right northbound or right southbound lane (just under the bridge) will be closed on occasion while vegetation removals take place at the Yonge Street bridge
- Signage will be in place to let motorists know that there is a lane closure and that crews are working under the bridge

GO Expansion Construction Notice

### Vegetation and tree removals along the rail corridor near King City GO

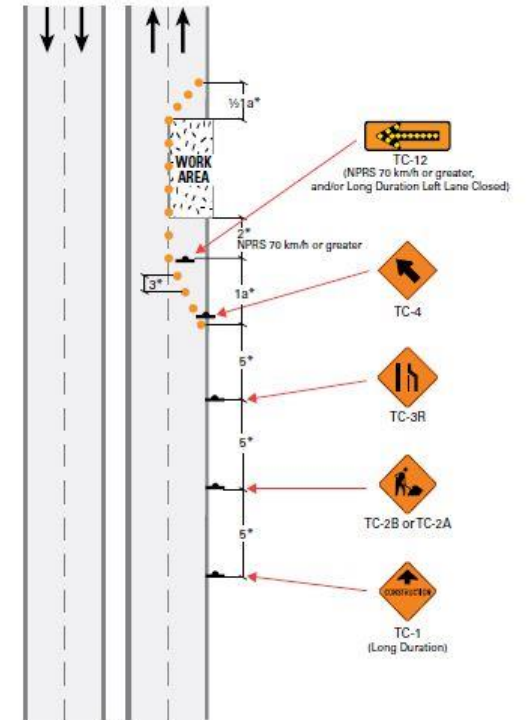
September 2023 to March 2024



Work is underway to deliver the GO Expansion Program and prepare for the future electrification of GO service. To support this work, Metrolinx will need to clear, remove and prune designated trees and vegetation located within and along the Barrie rail corridor between Kirby Road and Dufferin Street, as well as between Bathurst Street and Engelhard Drive.

Once cleared, growth control zones will be established to manage vegetation inside the corridors over the long term. Trees removed as part of this work within King Township, the City of Vaughan and Town of Aurora will be replaced through a tree restoration program based on the Metrolinx Vegetation Guideline (2022).

Information as of September 8, 2023



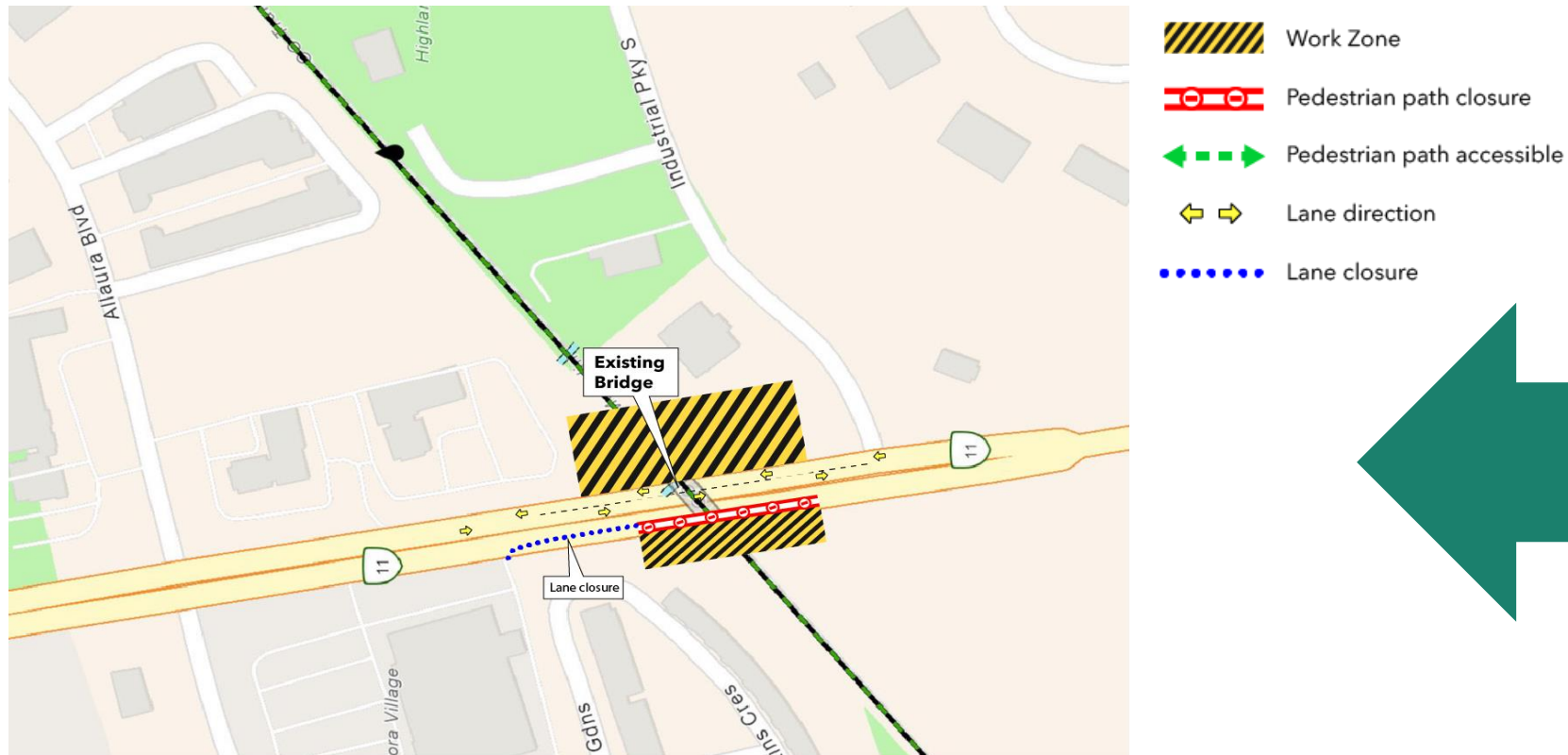
An updated construction notice about the vegetation removals will be sent out in February to communicate the new timeline.

Traffic management on Yonge Street under the rail bridge while vegetation removals take place.



# Upcoming Work: Abutment Works (Starting in 2024)

- Installation of bridge footings (sheet piling and drilling involving the use of heavy construction equipment)
- Starting on the west side of Yonge Street, and then moving to the east side once complete
- Any disruptive work will take place during the day to minimize impacts
- Noise and vibration levels will be monitored to ensure that they are within an acceptable level (determined by industry standards)



**Lanes will only be reduced when necessary. Efforts will be made to keep as many lanes open as possible while construction takes place.**

# Questions & Discussion



# Next Steps

# Revisit Meeting Format & Frequency

## Format

- Discussion at CLC #1 indicated a strong preference for virtual meetings in the winter months (December to March) with hybrid meetings starting in Spring.
  - Has this preference shifted for the group?

## Frequency

- CLC #1 Results: Monthly or bi-monthly, depending on the construction schedule
  - Next meeting in March or April

# Contact Us

## Any unanswered questions?

- Email Ella and Jessica at [YorkRegion@metrolinx.com](mailto:YorkRegion@metrolinx.com)
- Call us at 416-202-4453

## Want to learn more about Barrie Line GO Expansion?

- Visit our website at [metrolinx.com/barrie](https://metrolinx.com/barrie)
- Follow us on Instagram and X (Twitter): [@GOExpansion](https://twitter.com/GOExpansion)
- Subscribe to the York Region e-newsletter at [metrolinx.com/subscribe](https://metrolinx.com/subscribe)

## Looking for a copy of this presentation deck to share with others?

- It will be uploaded to [metrolinx.com/aurora](https://metrolinx.com/aurora)

