

Land Acknowledgement

Let us take a moment to acknowledge we are on lands that have been, and continue to be, home to many Indigenous Peoples including the Anishnabeg, the Haudenosaunee and the Huron-Wendat peoples.

We are all Treaty people. Many of us have come here as settlers, as immigrants or involuntarily as part of the trans-Atlantic slave trade, in this generation, or generations past.

We acknowledge the historic and continued impacts of colonization and the need to work towards meaningful reconciliation with the original caretakers of this land.

We acknowledge that Metrolinx operates on territories and lands covered by many treaties that affirm and value the rights of Indigenous communities, Nations and Peoples. We understand the importance of working towards reconciliation with the original caretakers of this land.

At Metrolinx, we will conduct business in a manner that is built on a foundation of trust, respect and collaboration.

Ontario Line

CLC Meeting #12

Pape Avenue Junior Public School

February 27, 2024

AGENDA

1. Welcome

2. Construction Updates

- THESL work

3. Long-Term Noise Barrier

- Status update
- Mural update

4. Upcoming Activities

5. Issues Tracker

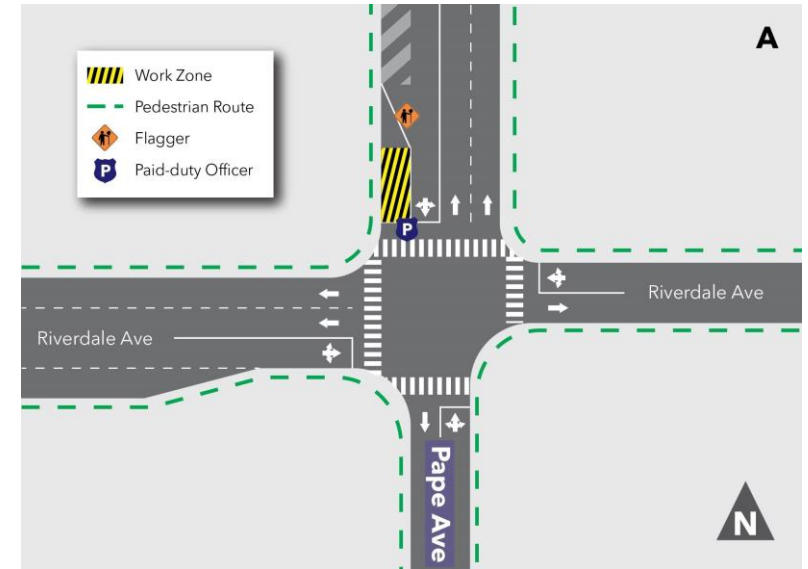
6. Discussion



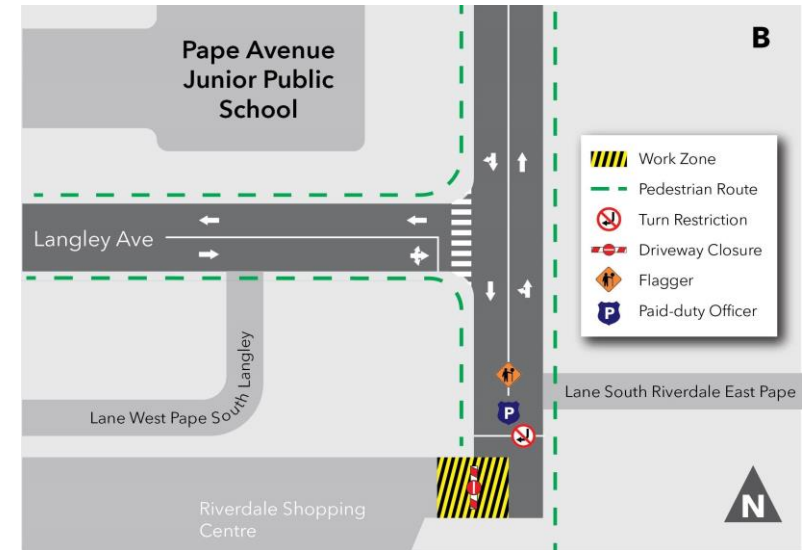
Construction Updates

THESL Work

- Work began on January 29, 2024.
- Toronto Hydro's existing duct bank along Pape Ave between Riverdale and south of Langley is being relocated to allow for the storm sewer relocation.
- Work has started at the northwest corner of Pape and Riverdale Ave. (see map A)
- Completion forecasted for September 2024.



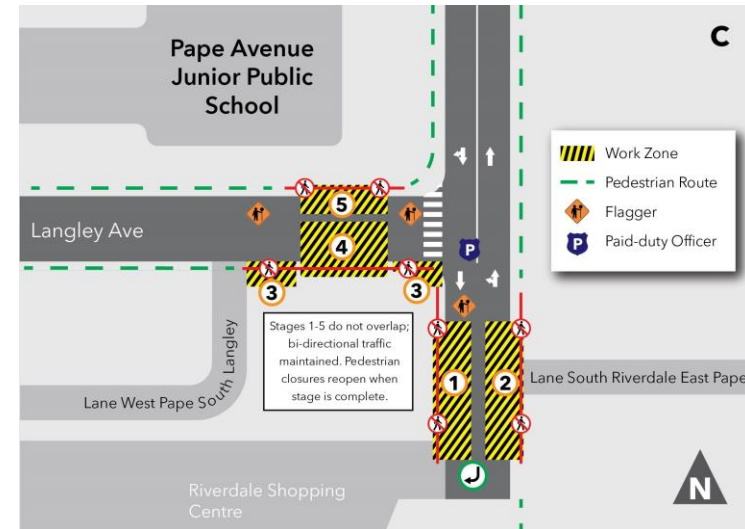
Chamber Construction



Chamber Construction

THESL Work Cont'd

- Construction activities include:
 - Sidewalk and road pavement cutting
 - Chamber rebuild
 - Directional drill work
- Equipment used:
 - Saw cutting
 - Jack-hammers
 - Excavators
 - Hydrovac
 - Materials delivered by truck
- PDO and traffic control personnel will be present during work hours.



Trenching and Excavation



Trenching and Excavation

Pape Avenue Jr PS Long-Term Noise Barrier

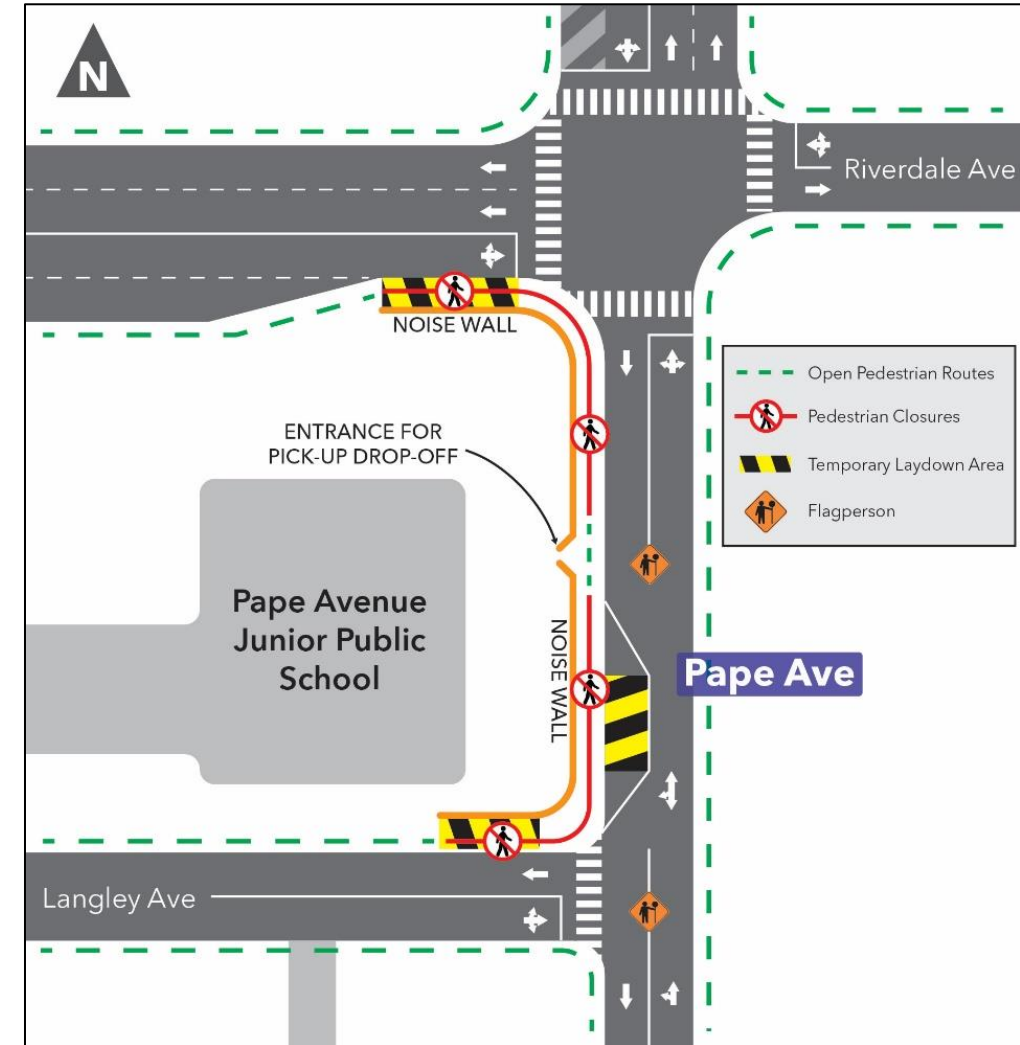
Pape School Noise Barrier - Updates

Construction:

- Construction concluded January 28th.
- Anti-climb fencing installed, and a sliding noise barrier door have been installed.
- Noise wall has reached substantial completion.

Mural:

- Metrolinx will be working with STEPS who will work with the school to co-develop the mural.
- Students will be part of the mural creation.







Noise Wall



Overview of Traffic and Pedestrian Management Plan

Contained in Health & Safety Plan

Overview of Traffic & Pedestrian Management Plan (contained in H&S Plan)

			
PEDESTRIANS	AUTO & CYCLIST	ON-STREET PARKING	SCHOOL PICK-UP/DROP-OFF
<ul style="list-style-type: none">• Our goal is to maintain safe pedestrian connections for all open sidewalks.• There will be some sidewalk closures in the work area; however, safe pedestrian connections will be maintained at all times.• For sidewalk closures, signage will be in place at nearest intersections to direct pedestrians to the other sidewalk.	<ul style="list-style-type: none">• Our goal is to maintain areawide traffic movements with some lane or intersection closures.• There will be local traffic detours due to directional/lane or intersection closures.• Signage, Flagmen and Paid Duty Officers will be provided where needed to support traffic management.	<ul style="list-style-type: none">• Access to driveways or parking within private properties will be maintained• Plans for each element of the work will be designed to minimize impact on the on-street permit parking spaces and accommodate them at alternate locations, where feasible.	<ul style="list-style-type: none">• Our goal is to ensure safe student pick-up/drop-off locations.• Existing school pick-up/drop-off area will be maintained for significant portion of the works.• During certain works where Pape Ave will be closed, Riverdale Ave will be alternate pick-up/drop-off zone.• There will be on-going consultation with the School-Parent Council.

Upcoming Activities

- Metrolinx to circulate CLC meeting summary and action items by EOD Friday, March 1st, 2024.
- Metrolinx to provide school and CLC with plan for the mural including student participation.
- Next CLC meeting to be scheduled for March 26th, 2024.
- Councilor Fletcher will be hosting a community meeting to speak to Construction Impacts
 - [Ontario Line Construction Impacts: Pape & Riverdale - Co-Hosted with Trustee Ehrhardt - Councillor Paula Fletcher](#)
- Details around mural workshop to be finalized.

Issues Tracker - Items discussed during January 30, 2023, and Community Concerns

#	Action Item	Response/Resolution
1	An explanation of the measure over an average of the noise impacts was requested.	<p>The “shortened length” was discussed at the noise workshop, where we are considering the worst-case impact which someone could be outside (i.e. someone in the playground from 7 a.m. to 6:00 p.m.), knowing that the impact would be less than this (i.e. students are inside for a majority of the time)</p> <p>Paul will reach out to the community member to explain this in greater detail, if they so desire.</p>
2	A request for the specifications of the noise wall was requested.	This has been provided prior to the meeting. Please also note that the Plexiglass is the same level of noise reduction as the other materials based on the thickness of the plexiglass.
3	A request was made for the approximate timelines of the sanitary relocation work.	The sanitary relocation timeline is still being developed in partnership with Metrolinx’ newly onboarded contractor.
4	A request was made to have new contractors and security companies introduced to the community through site-walks.	We will arrange for a site walk whenever there is a major new contractor on board. As part of this site-walk the community can raise safety concerns/security personnel concerns and Metrolinx will also be proactive to address those concerns. The private security company will not attend as the contractor will manage that relationship and reiterate Metrolinx’ expectations regarding security conduct.
5	There was a request for examples of where micro-tunneling has been used, particularly nearby to schools or other institutions.	While we do not have an example of micro-tunneling near a school or other institution, several examples were shared including of work done in the Pearson airport and in the York Region. We also have shared an animated video of how micro-tunneling works Metrolinx will continue to seek examples of any micro-tunneling near a school.
6	There was a request for actual dBA in the playground related to noise impacts.	Please see further details in the email distributed prior to the meeting. In short, we currently are measuring noise impacts from monitors located on the noise wall itself. In the near future our noise expert will attend Pape Jr School to measure noise impacts on the playground.



Discussion

