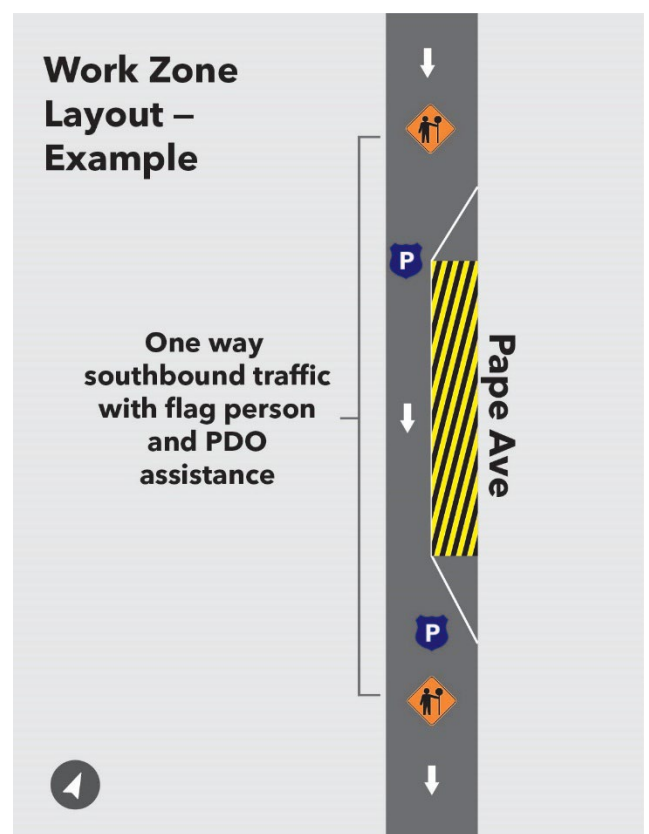
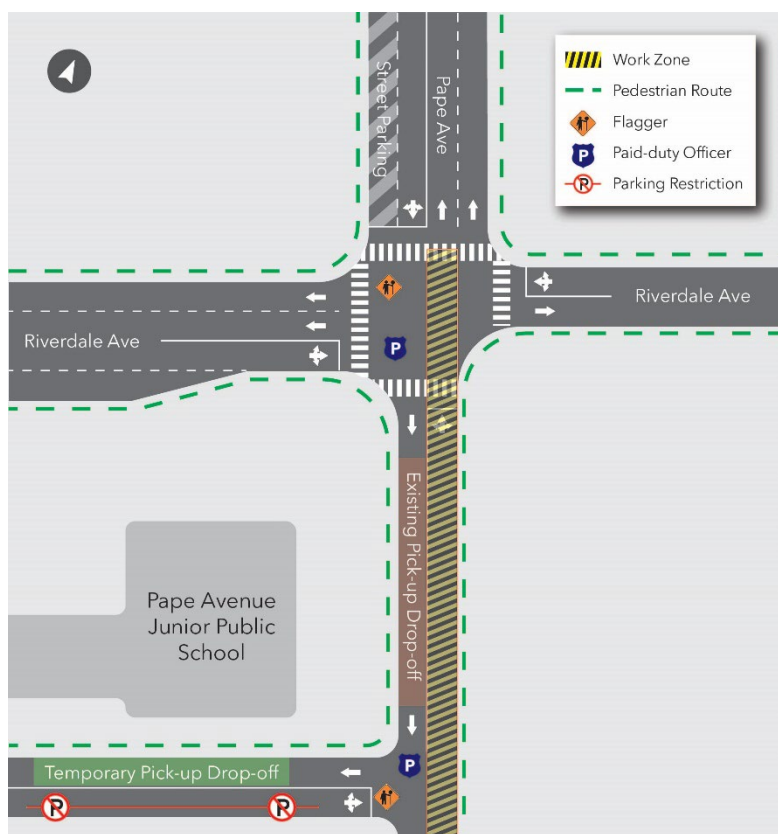


# UPDATE: Sewer Bypass Installation and Trenching on Pape Avenue

**Expected start date:** As early as April 8, 2024

**Expected duration:** Approximately 8-10 weeks

**Hours of work:** Weekdays 7 a.m. to 11 p.m., Weekends 9 a.m. - 7 p.m.



## What is happening?

- As part of utility relocation works in the vicinity of Pape Avenue and Riverdale Avenue, crews are moving to the next phase of work, which will involve the installation of a sewer bypass line along the east side of Pape Avenue, followed by trenching for Toronto Hydro installation in the same footprint.

- For bypass installation works, crews will progress southbound from Riverdale Avenue in approximately 30-metre segments within the construction area shown above. This will take approximately two weeks.
- Following bypass installation, crews will initiate trenching and hydro line installation in the same pattern. This will take approximately four weeks.

## What to expect

### Construction:

- Work will involve the use of excavators and a hydrovac truck. This is a requirement to safely protect existing utility infrastructure.
- Residents in the area may hear noise caused by work equipment. Crews will take measures to minimize noise impacts wherever possible.
- Work may be delayed due to weather conditions or unforeseen circumstances.

### Traffic and Pedestrian Details:

- There will be temporary pedestrian detours around the location where immediate work is taking place. Traffic control personnel and a paid-duty officer will be on-site to ensure pedestrian safety.
- In the vicinity of the active work zone on Pape Avenue, bidirectional traffic will alternate in a single lane on the west side of Pape Avenue, controlled by traffic control persons.
- When work is happening south of Langley Avenue, vehicle access into the shopping centre from Pape Avenue will be restricted. Signage will be in place to advise of this closure.
- When required, traffic access from Pape Avenue to Langley Avenue will be controlled by a traffic control person.
- Due to traffic restrictions on Pape Avenue, the Pape Avenue Junior Public School pick-up/drop-off will be relocated temporarily onto Langley Avenue to ensure safety and traffic flow.
- Street parking within the vicinity of the work zone on Pape Avenue will be restricted.

#### Contact us:

Call us 24/7 at: [416-202-5100](tel:416-202-5100)

Write to us at: [ontarioline@metrolinx.com](mailto:ontarioline@metrolinx.com)

Find us on Twitter, Facebook, and Instagram: [@ontarioline](https://www.instagram.com/ontarioline)

Visit the website: [www.metrolinx.com/ontarioline](http://www.metrolinx.com/ontarioline)

#### Visit our community offices:

##### Riverside:

770 Queen St. E, Toronto, ON, M4M 1H4

General hours:

- Mondays, Tuesdays and Fridays: 9 a.m. to 5 p.m.
- Wednesdays and Thursdays: 10 a.m. to 6 p.m.

##### Thornccliffe Park:

East York Town Centre

45 Overlea Blvd., Toronto, ON M4H 1C3

Unit 153 (across from the Rogers store)

General hours

- Monday to Friday: 9 a.m. to 5 p.m.

- On Langley Avenue, street parking will be removed opposite to the temporary pick-up drop-off area to maintain traffic flow.
- Access to residences will always be maintained.

### Safety:

- A paid duty officer and/or traffic control personnel will be on-site managing traffic and pedestrian flow.
- Signage will be posted around the site to direct pedestrians.
- Equipment may be left on site but will be properly secured and stored to ensure safety.
- Dust will be mitigated by misting, sweeping and/or the use of a hydrovac truck.
- After-hours security will be onsite between 7 p.m. and 7 a.m. to ensure equipment and materials are not tampered with.

## About the Ontario Line

- 15.6-kilometre subway line that will make it faster and easier to travel within Toronto and beyond.
- 15 stops and more than 40 connections to other transit, including GO train, subway, LRT, streetcar, and bus lines.
- Less than 30 minutes from one end of the line to the other.
- 28,000 fewer cars on the road each day.

### Contact us:

Call us 24/7 at: [416-202-5100](tel:416-202-5100)

Write to us at: [ontarioline@metrolinx.com](mailto:ontarioline@metrolinx.com)

Find us on Twitter, Facebook, and Instagram: [@ontarioline](https://www.instagram.com/ontarioline)

Visit the website: [www.metrolinx.com/ontarioline](http://www.metrolinx.com/ontarioline)

### Visit our community offices:

#### Riverside:

770 Queen St. E, Toronto, ON, M4M 1H4

General hours:

- Mondays, Tuesdays and Fridays: 9 a.m. to 5 p.m.
- Wednesdays and Thursdays: 10 a.m. to 6 p.m.

#### Thornccliffe Park:

East York Town Centre

45 Overlea Blvd., Toronto, ON M4H 1C3

Unit 153 (across from the Rogers store)

General hours

- Monday to Friday: 9 a.m. to 5 p.m.