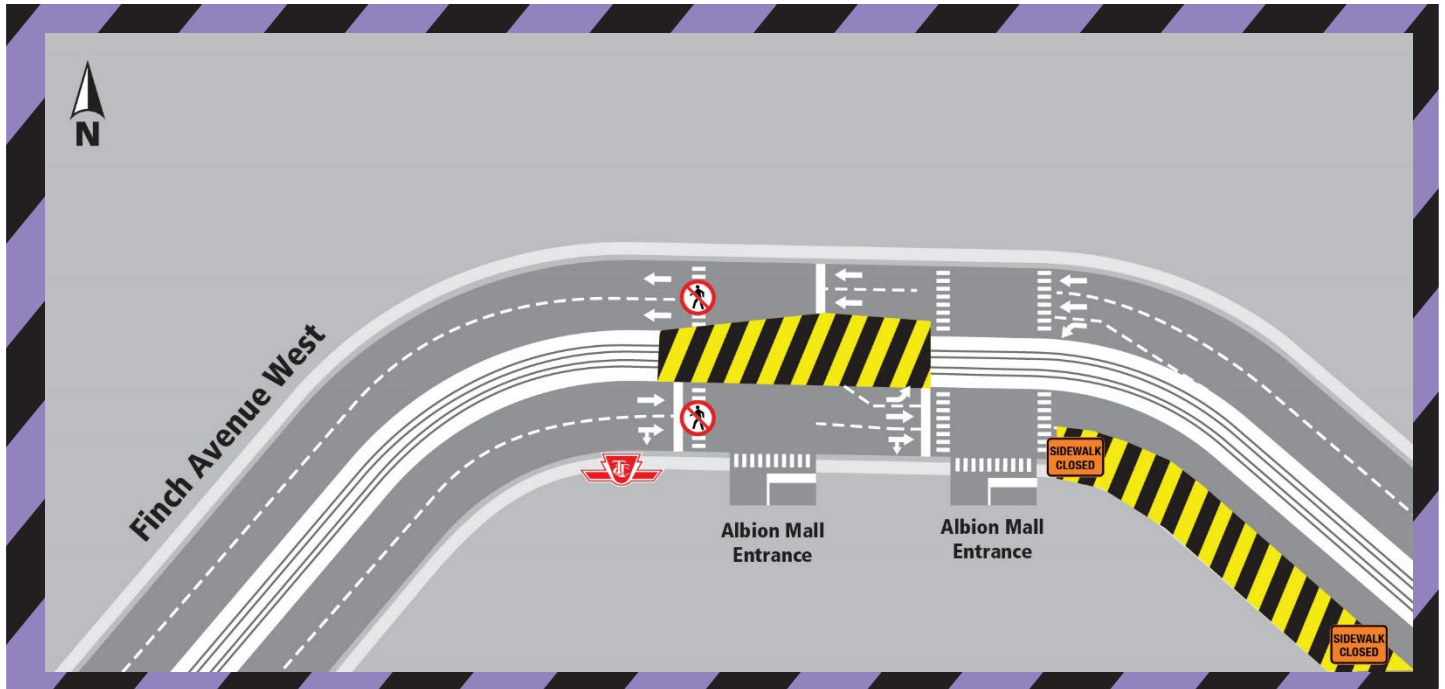


Update: Minor Works Between Kipling Avenue and Albion Road at Finch Avenue West

March 1, 2024 to April 30, 2024



TIMING

- March 1, 2024, to April 30, 2024, approximately.
- Work hours: 7:00 a.m. to 5:00 p.m.
- There may be overnight and/or weekend work, if required.

IMPACT

- Access to Albion Mall will remain open.
- There will be a Paid Duty Officer, flaggers, and detour signs to direct traffic, as needed.
- Temporary relocation of TTC bus stops, if needed.
- Minor field modifications may occur when needed to complete work safely and minimize impact on the public.

LOCATION

- Between Kipling Avenue and Albion Road

WORK DESCRIPTION

- Minor sidewalk and utilities works.

Detailed Description

As part of the Finch West Light Rail Transit (LRT) Project, crews will be doing minor sidewalk and utilities works between Kipling Avenue and Albion Road at Finch Avenue West. The work is scheduled to start on March 1, 2024, and will last till April 30, 2024, approximately. Notice will be updated as required to reflect any significant traffic staging.

Work may be rescheduled due to weather conditions or unforeseen circumstances.

Please take extra care when navigating near work sites, and always make eye contact with the driver before crossing in front of any equipment or vehicle.

Minor field modifications may occur when needed to complete work safely and minimize impact on the public.

There will be a Paid Duty Officer, flaggers, and detour signs to direct traffic, as needed.

Noise and vibration will be monitored when required during these activities.

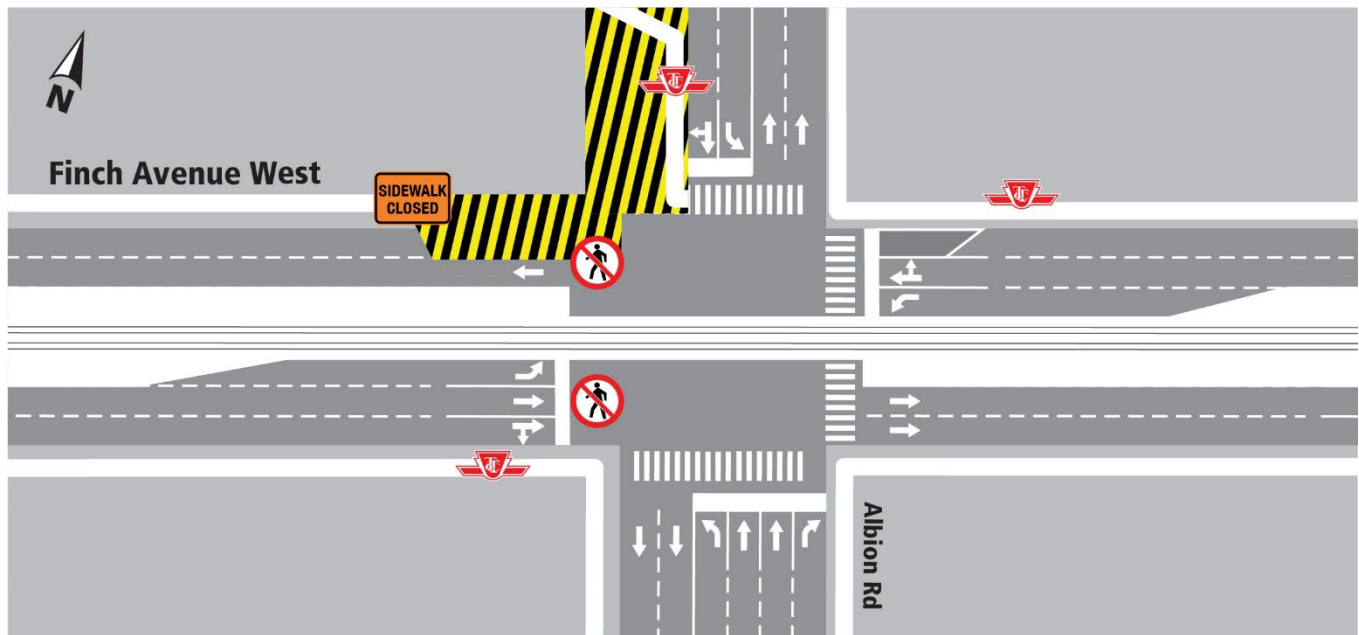


Virtual Hours of Operation:
Monday- Friday, 9:00 a.m. to 5:00 p.m.
In person- by appointment.
Tel: 416-202-6500

Cet avis de travaux de construction est disponible en français sur demande. Si vous êtes intéressé, veuillez envoyer un courriel à TorontoWest@metrolinx.com

Contact Us:

Write to us at: TorontoWest@metrolinx.com
Find us on Twitter @FinchWestLRT
Visit the website: www.metrolinx.com/finchwestlrt



WORK HOURS:

- Work will primarily occur Monday to Friday from 7 a.m. to 5 p.m. There may be overnight and/or weekend work, if required.
- Signs are installed to keep residents informed about the closure.
- Dates are tentative and may change. Please visit us at www.metrolinx.com/finchwestlrt for up-to-date information.
- Inclement weather or unforeseen circumstances may delay work activities.

WHAT TO EXPECT:

- Heavy trucks and equipment in the area.
- Due to the nature of the work, at times there will be dust, noise and vibration associated with this work.
- Nearby businesses and residents can expect noise from excavators, bobcats, vacuum trucks, and other construction equipment caused by road work activities.
- Expect delays near work zones.
- A minimum of one lane of traffic in each direction along Finch Avenue West will be always maintained.
- There will be a Paid Duty Officer, flaggers, and detour signs to direct traffic, as needed.

PEDESTRIAN, TRAFFIC AND TRANSIT DETAILS:

- Road and sidewalk restrictions are in place within the construction area to protect workers and the public.
- Please take extra care when walking near work sites, and always make eye contact with the driver before crossing in front of any equipment or vehicle.
- Pedestrians will be re-routed around the construction area when possible. For safety reasons, pedestrians may be diverted to the sidewalk on the opposite side.
- TTC bus stops will be closed or relocated away from work zones, as needed.
- Relocation of bus stops is done in consultation with TTC.
- Access to TTC will be always maintained, please visit www.ttc.ca for more information

Virtual Hours of Operation:
 Monday- Friday, 9:00 a.m. to 5:00 p.m.
 In person- by appointment.
 Tel: 416-202-6500

Cet avis de travaux de construction est disponible en français sur demande. Si vous êtes intéressé, veuillez envoyer un courriel à TorontoWest@metrolinx.com

Contact Us:

Write to us at: TorontoWest@metrolinx.com
 Find us on Twitter @FinchWestLRT
 Visit the website: www.metrolinx.com/finchwestlrt