

# Level Crossing Safety Enhancements

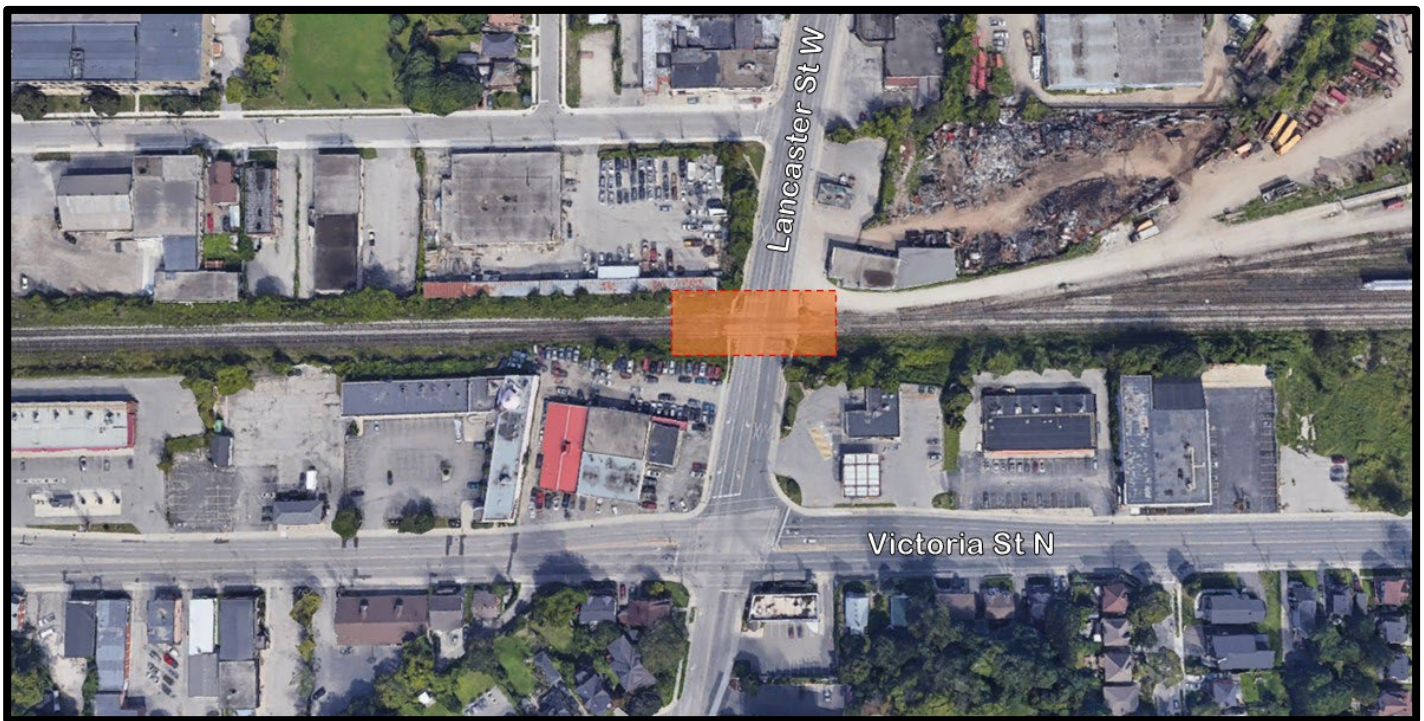
City of Kitchener

Metrolinx is bringing faster, more frequent service to the Kitchener Line. Construction is now underway on projects that will make way for improvements to bring two-way, all-day service from Union Station to Kitchener GO.

At Metrolinx, safety is central to everything we do - which is why we continue to introduce safety improvements as we build more rail infrastructure and increase capacity for service across the network. The Level Crossings and Safety Framework ensures all level crossings are safe for pedestrians, drivers, and communities.

## WHAT IS HAPPENING?

- Construction work at the Lancaster St. level crossing is scheduled to occur consecutively overnight, between 8:00 p.m. and 6:00 a.m., on Monday, April 15 for approximately four (4) weeks.
- Crews will conduct safety measure upgrade works above and beyond current Transport Canada Grade Crossing Standard requirements.
- Enhancements will include upgraded multi-train warning signs, new exit swing gates, and improvements to pedestrian infrastructure and accessibility.



## Contact Us:

Write us at: [WaterlooRegion@metrolinx.com](mailto:WaterlooRegion@metrolinx.com)

Find us on Twitter: @GOExpansion

Visit the website: [www.metrolinx.com/kitchener](http://www.metrolinx.com/kitchener)

---


## WHAT THIS MEANS FOR YOU

- Starting as early as April 15, residents may hear construction noise throughout the late evening and into the early morning.
- During construction, there will be single-lane road closures and pedestrian routes may be altered. Please exercise caution in all areas under construction and follow the direction of signage and flag persons.
- Use of heavy equipment (such as a vacuum truck) is required to protect underground infrastructure e.g., fiber optic cables; however, daily activities may change as work progresses.
- This work must be completed overnight so as to not conflict with train operations.
- Please note construction schedules could change with short notice due to weather or unforeseen circumstances. The Community Engagement team will make every effort to provide advance warning of any changes. Construction notices are posted on our website: [www.metrolinx.com/kitchener](http://www.metrolinx.com/kitchener)

## QUESTIONS

We understand that while necessary, this work is potentially disruptive to nearby residents. We appreciate your patience and understanding. Our Community Engagement team is available to answer your questions by email, Monday - Friday, 8:30 a.m. - 4:30 p.m. at [WaterlooRegion@metrolinx.com](mailto:WaterlooRegion@metrolinx.com).

To receive updates about future Metrolinx projects and services in your area, sign up for the Waterloo Regional E-newsletter at [metrolinx.com/subscribe](http://metrolinx.com/subscribe).



---

### Contact Us:

Write us at: [WaterlooRegion@metrolinx.com](mailto:WaterlooRegion@metrolinx.com)  
Find us on Twitter: @GOExpansion  
Visit the website: [www.metrolinx.com/kitchener](http://www.metrolinx.com/kitchener)