

Ontario Line

Osgoode CLC Meeting #8

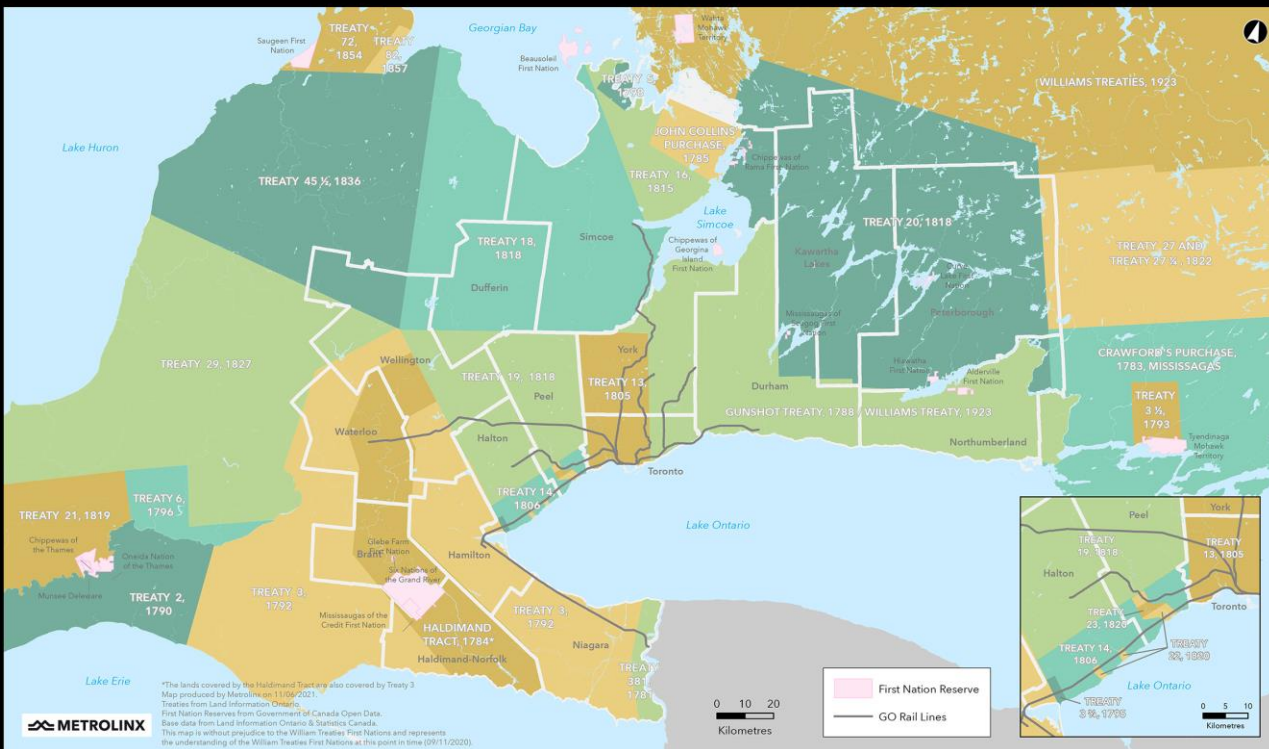
March 27, 2024

 METROLINX



Land Acknowledgment

Treaties and Reserves in the Greater Golden Horseshoe



Let us take a moment to acknowledge we are on lands that have been, and continue to be, home to many Indigenous Peoples including the Anishnabeg, the Haudenosaunee and the Huron-Wendat peoples.

We are all Treaty people. Many of us have come here as settlers, as immigrants or involuntarily as part of the trans-Atlantic slave trade, in this generation, or generations past.

We acknowledge the historic and continued impacts of colonization and the need to work towards meaningful reconciliation with the original caretakers of this land.

We acknowledge that Metrolinx operates on territories and lands covered by many treaties that affirm and value the rights of Indigenous communities, Nations and Peoples.

We understand the importance of working towards reconciliation with the original caretakers of this land. At Metrolinx, we will conduct business in a manner that is built on a foundation of trust, respect and collaboration.

Safety Moment

Commute on Transit

Whether you're taking the subway or the GO Train, safety is paramount.

Here are quick tips for a safer rail commute:

1. **Mind the gap:** Watch your step and be mindful of the gap between the platform and the train.
2. **Hold on:** Always grip handrails or grab bars while the train is moving to prevent falls.
3. **Stay alert:** Be aware of your surroundings and report any suspicious activity or items to transit staff.
4. **Respect personal space:** Avoid crowding fellow passengers and keep bags clear of walkways to prevent accidents.
5. **Watch your step:** Be cautious when boarding or exiting, especially in adverse weather or low-light conditions.
6. **Know your route:** Familiarize yourself with the rail system's map and schedule to navigate confidently and avoid delays.



Agenda

Welcome (5 minutes)

- Introductions
- Land acknowledgement
- Safety moment

Presentation (30 minutes)

- Action items recap from February CLC
- Construction updates
 - York Street trackwork
 - Station construction

Feedback and Discussion (15 minutes)



February CLC Action Items

Action	Response	Status
Metrolinx to provide a status update on the terms of reference during the next Osgoode CLC meeting.	Metrolinx will release the terms of reference this spring.	Completed.
Metrolinx to follow up with Toronto Financial District BIA on what construction days are expected to produce higher dust volumes given that the Richmond Adelaide Centre will be undertaking painting in the coming months.	Metrolinx has confirmed that they don't believe there is any high dust emitting activities remaining for the Queen Street Detour - York Street work.	Completed.
Metrolinx to share feedback with the site team on the unexpected laneway closure between Richmond and York Streets and to ensure that any further closures are well communicated.	Metrolinx will describe the next stage of York Street track work, which begins as early as April 4, 2024, during this meeting. Construction notice will be issued in advance of the work.	Completed.
Metrolinx/OTG to discuss the plaque in front of 205 Queen at their next meeting with the Queen Street West BIA.	OTG confirmed that this plaque has been removed and is in storage. Meeting with the Queen Street West BIA takes place March 28, 2024.	Action to be completed as of March 28, 2024.

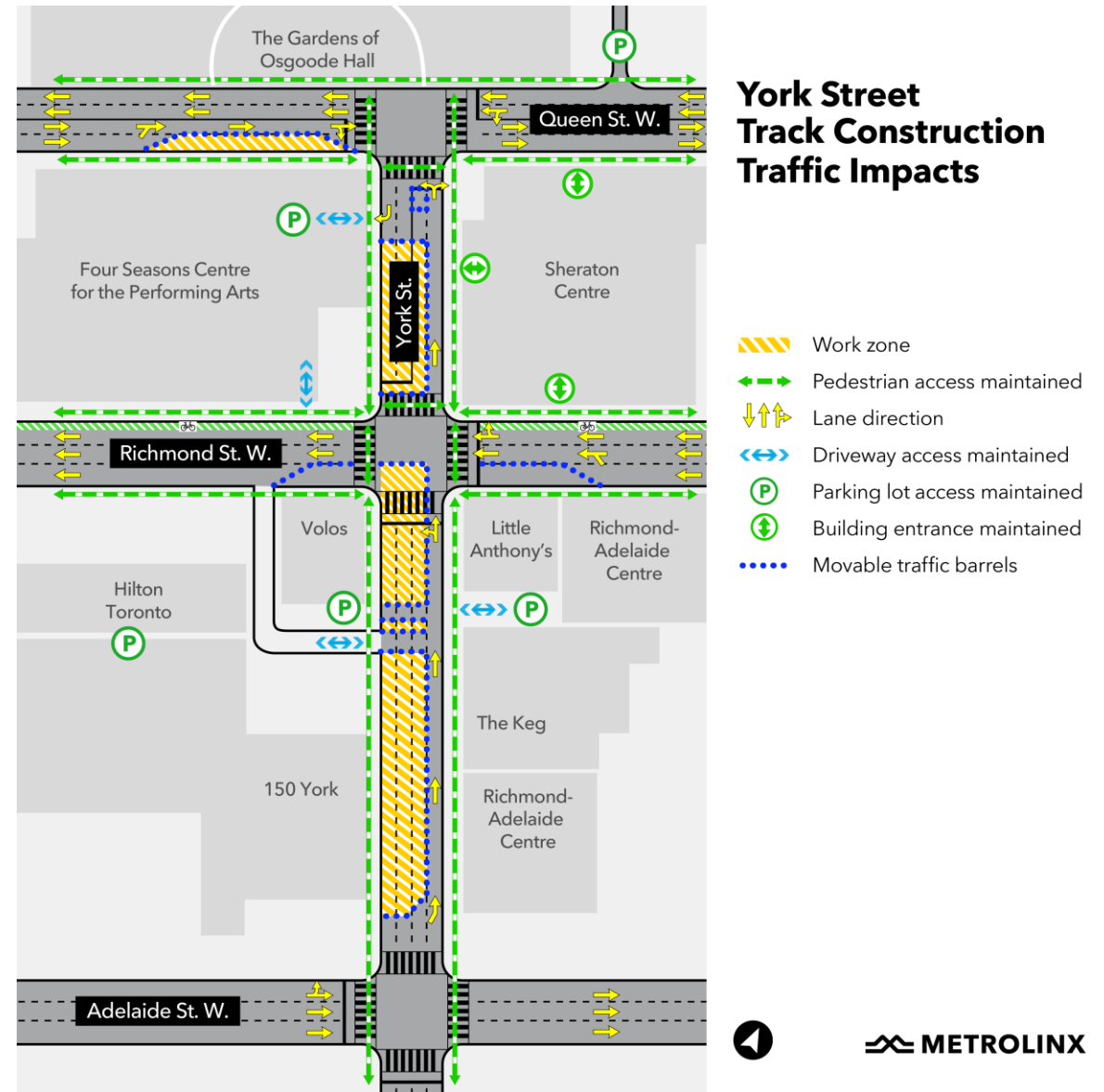
February CLC Action Items

Action	Response	Status
OTG to follow up with City of Toronto on the overnight work happening near 168 Simcoe Street.	OTG continues to coordinate with the City of Toronto on any overnight work for exceptional reasoning and communicate with 168 Simcoe Street in advance of this work.	In-progress.
Metrolinx to follow up with Crossbridge Condominium Services Limited on the opportunity to explore holding an information session for the residents of 168 Simcoe Street.	Metrolinx is working with the condo board and will host an information session for the residents of 168 Simcoe Street in April. Date is to be determined.	Upcoming.

York Street Trackwork

York Street Update

- Crews continue working on York Street to prepare the area for track installation
- As early as **April 4, 2024** crews will mobilize to the intersection of York Street and Richmond Street
- One lane northbound on York Street will be maintained at all times
- Two lanes westbound on Richmond Street will also be maintained.
- Access to parking lots and loading docks will be maintained. However, the contractor is requesting permission to limit access to the two driveways on York Street
 - Limited access would be necessary for approximately 7-10 days either at the end of April 2024 or beginning of May 2024
 - Active coordination is taking place with affected property owners
- Pedestrian access will be maintained throughout the area
- This phase of work is expected to take approximately one month to complete
- More information on traffic impacts and mitigations will be shared as this project progresses



*Traffic impacts subject to change, conversations with City and TTC ongoing

Construction Updates- OTG

Construction Update

Future North Station Entrance

Recently Completed Work

- Installation of construction gate following removal of heritage gate
- Installation of Tree Protection Zone (TPZ)
- Removal of heritage cobblestones

Work in Progress / Coming Soon

- Removal of University Avenue sidewalk steel fence (non-heritage)
- Site preparation including ground preparation such as:
 - Compaction and grading
 - Ground improvement of north shaft area
- Concrete work for upcoming piling activities



Construction Update

Future North Station Entrance

Coming Soon: TTC Stair Entrance Closure at Osgoode (northeast corner)

- The TTC Stair Entrance of the northeast corner at University Avenue and Queen Street will be **closed permanently as early as April 1, 2024**.
- The TTC station at Osgoode remains accessible at station and street level via the following three entrances:
 1. University & Queen West entrance, southeast corner (Four Seasons Centre)
 - Elevator and stair access to concourse level
 - Non-TTC elevator
 - Accessible, Wheel Trans stop
 2. University & Queen West entrances, Southwest corner
 - Sidewalk staircases on west and south sides
 3. University & Queen West entrance, northwest corner
 - Sidewalk staircase leading to concourse level.
- During demolition, northbound bike, vehicle, and pedestrian traffic on University Avenue will shift slightly to the west, as indicated in the map.
- Click [here](#) to read the construction notice.

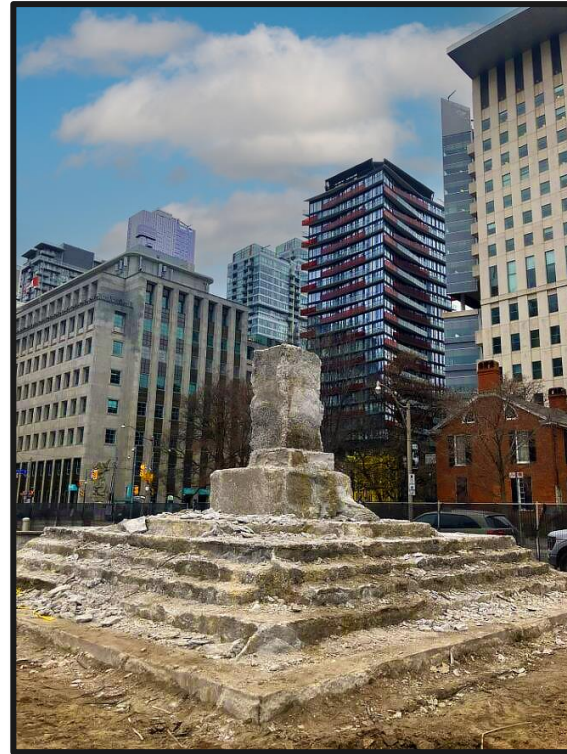


Construction Update

University Avenue Median

Recently Completed Work

- Tree removals in the median.
- Heritage work to remove and preserve the South African War Memorial.
- Foundation being demolished.
- Mechanical elements of the fountain being removed and stored followed by fountain basins.
- Ongoing grading of University Avenue median for eventual road diversion.



View of South African War Memorial removal work as of March 25.



Crew removing stones from South African War Memorial on March 13.

Construction Update

University Avenue Median

Work in Progress / Coming Soon

- University Avenue traffic reconfiguration as early as mid-April 2024.
- Two northbound traffic lanes will remain open for vehicular traffic.
- Bike access and the pedestrian travel route will be maintained along the construction and laydown zones.

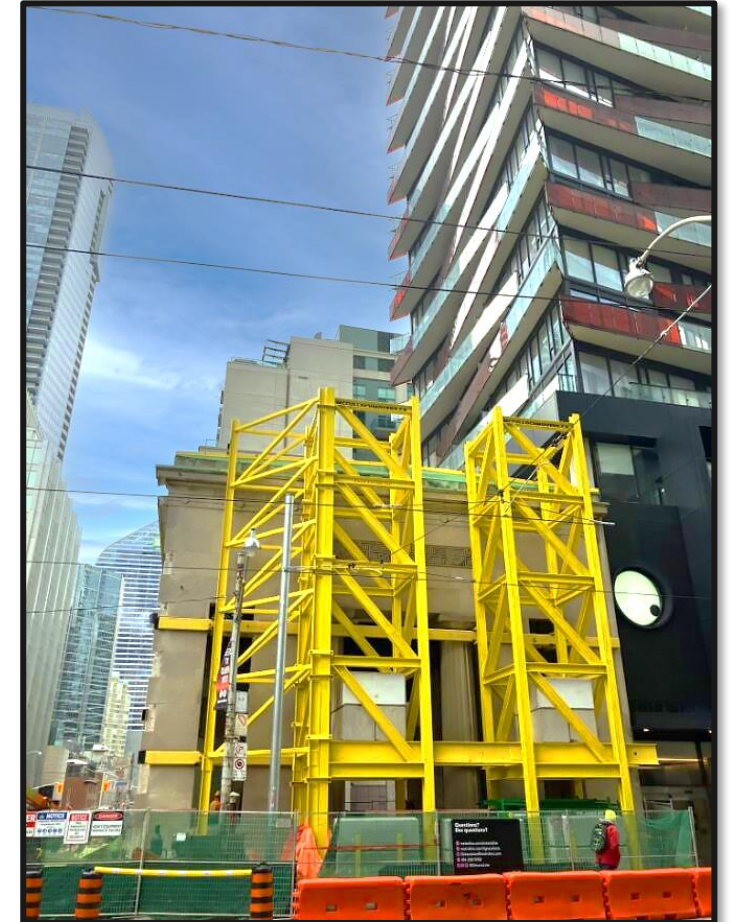


Construction Update

Future South Station Entrance

Work in progress / coming soon

- Heritage east façade retention/relocation and interior demolition work is ongoing.
- 75% of the work is now complete.
- The installation of the north retention tower is complete.
- Crews are preparing to panelize, protect and move the east-facing wall in early April.
- Wall will be secured and removed in one piece, then crews will roll it in a frame, south on Simcoe Street, where it will be stored for the duration of the project in front of 168 Simcoe Street.
- The east-west laneway between Simcoe and St. Patrick streets is expected to be blocked for approximately four days, commencing early to middle of April.

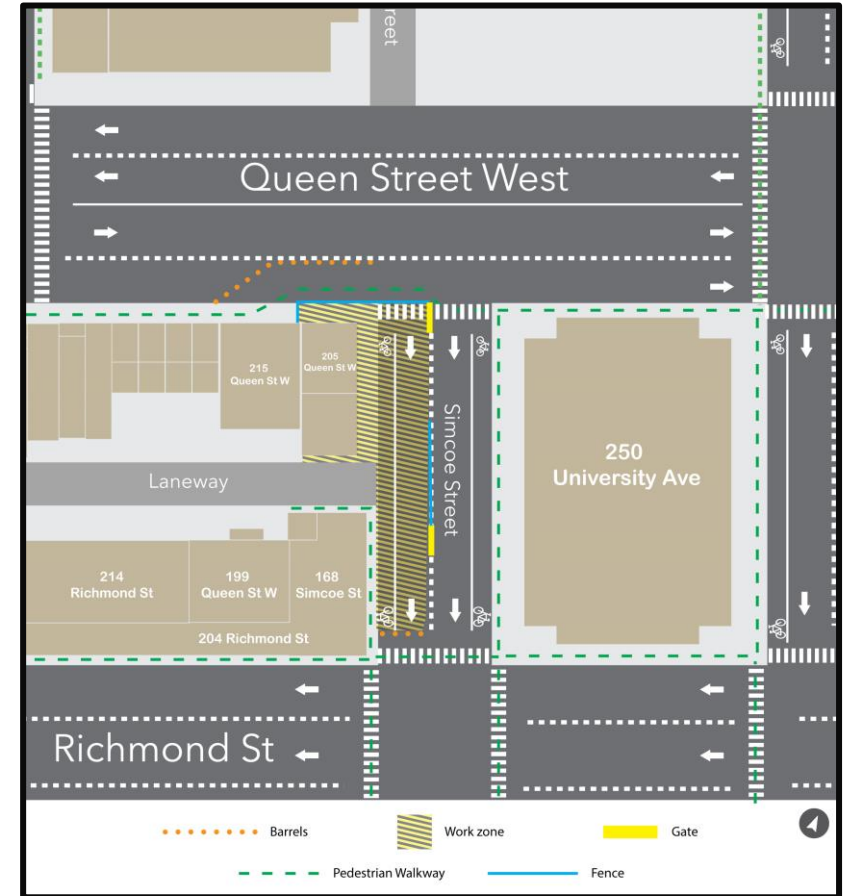


Construction Update

Site Traffic and Mitigating Pedestrian Impacts

East heritage façade removal

- Work is expected to begin early to mid-April 2024, and should take up to four days.
- Crews will be working weekdays between 7 a.m. and 5 p.m..
- Work will be done behind the construction fencing while using access via Simcoe Street. A storage area will be established on the street during the heritage façade work.
- The laneway is expected to be blocked for approximately four days, commencing early to middle of April. It can still be accessed via Duncan Street.
- The vehicular traffic on Simcoe Street will remain one lane. The bicycle lane will retain its access, and pedestrians will continue to be able to access the curb lane along 250 University Avenue and along 168 Simcoe Street at the front of the building.



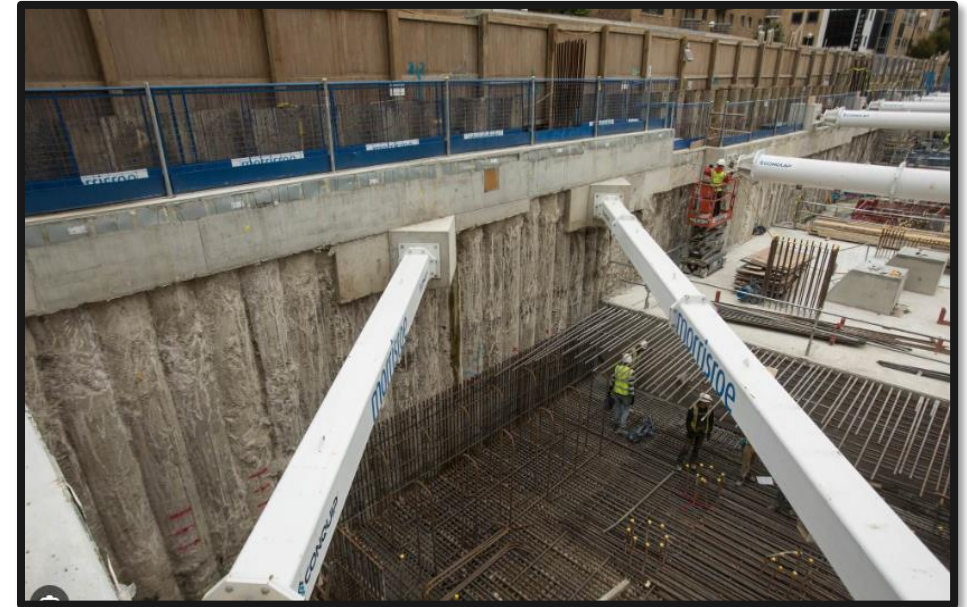
Upcoming Work

Upcoming Work

Pile Drilling

Pile drilling

- Crews will be drilling to install structural walls to support the ground excavation of the station.
- Piling or pile drilling is a foundational technique commonly used when constructing temporary underground structural support systems.
- It ensures stability and safe support of nearby infrastructure and buildings until the permanent concrete structure of the station and other subway structures is completed.
- The process consists of drilling a series of overlapping (secant) piles and filling them with concrete to form continuous watertight structural walls.
- Some of the piles are reinforced with steel beams.



Example of a secant pile wall

Upcoming Work

Methodology

Pile drilling

- Crews install pile walls to construct the access shafts of the station. This work is performed before excavation of the station shaft itself.
- Several pile walls will be installed around the perimeter of the future station footprint.
- To install the pile walls, a drilling machine will create a 17 to 20m deep hole (1m diameter) around the perimeter of the site - this is equivalent to about a 7-story building.
- Several methods of installing piles for excavation support are possible or preferred depending on soil and water conditions. Secant piles are often used in urban settings with confined footprints for construction.



Example of the tops of secant piles

Upcoming Work

Focus on Piling

Pile drilling for the Ontario Line subway

- Piling work at the future Osgoode station will start at the south station site first as early as May 2024, then the north.
- A virtual information session on construction piling, including what to expect, will be held on **April 24, 2024, in lieu of our regular CLC.**
- This meeting will be open to anyone in the neighborhood to attend.
- More information about this work and the session will be distributed in the coming weeks.



Example of a drilling machine used in piling construction

Construction Look-Ahead

Timing	Activity	Location	Details & Purpose
Winter - early Spring 2024	Heritage Façade Protection + Retention Works	South site	Initiate preservation and retention works at future south station site
	Site Preparation	Laydown site (west of Osgoode Hall)	Prepare laydown area, including fencing installation, tree removal and cobblestones protection and ground preparation
	South African War Memorial	Median	Heritage preservation and removal works
	Tree Removals, Protection + Pruning	Median + North sites	Removal as well as protection and pruning of identified trees
	Heritage Fence + Cobblestone Removal	North site	Heritage preservation and removal works
	Demolition	South site	Removal of west façade wall
Early Spring - Summer 2024	TTC Entrance Closure	North site	Permanent closure of University & Queen West entrance, northeast corner: entrance will be demolished
	Piling	South + North sites	Install foundations to support future excavation of site
	Ground Monitoring Investigations	Various	Ground monitoring devices will be installed at multiple sites throughout the Osgoode neighbourhood.

Feedback and Discussion

Community Engagement

Community Engagement

Staying connected during construction.

Monthly public meetings

- Regular committee meetings to discuss upcoming works and share information.
- Next meeting: Virtual Information session on piling: April 24, 2024
- Regular CLC format will resume for May 22, 2024.

In-person and virtual consultation with residences and businesses

- Our door is open: share any feedback and concerns with us.

Construction notices and updates

- Prepared and distributed prior to new / impactful construction works; contact us to be added to the distribution list.

News, progress and information shared in the Ontario Line newsletter

- Sign up for regular updates and information



Our Community Office at 770 Queen Street East, which is the closest office to the Osgoode Station.

Community Engagement

Metrolinx will keep the community, residents and businesses informed by providing project updates, seeking input and feedback, while addressing questions and concerns effectively and quickly.

Connect with us:

- Julia Orsini, Community Engagement Advisor, Julia.Orsini@metrolinx.com or 437-451-0410
- Ross Andersen, Senior Advisor, Community Engagement, Ross.Andersen@metrolinx.com or 416-418-9218

✉ Email OntarioLine@metrolinx.com

☎ Telephone 24/7 @ 416-202-5100

📣 Ontario Line e-newsletter @ [Metrolinx.com/OntarioLine](https://www.metrolinx.com/OntarioLine)

Follow us on social media:

🌐 Twitter / Facebook / Instagram @OntarioLine



Our Community Office at 770 Queen Street East, which is the closest office to the Osgoode Station.

