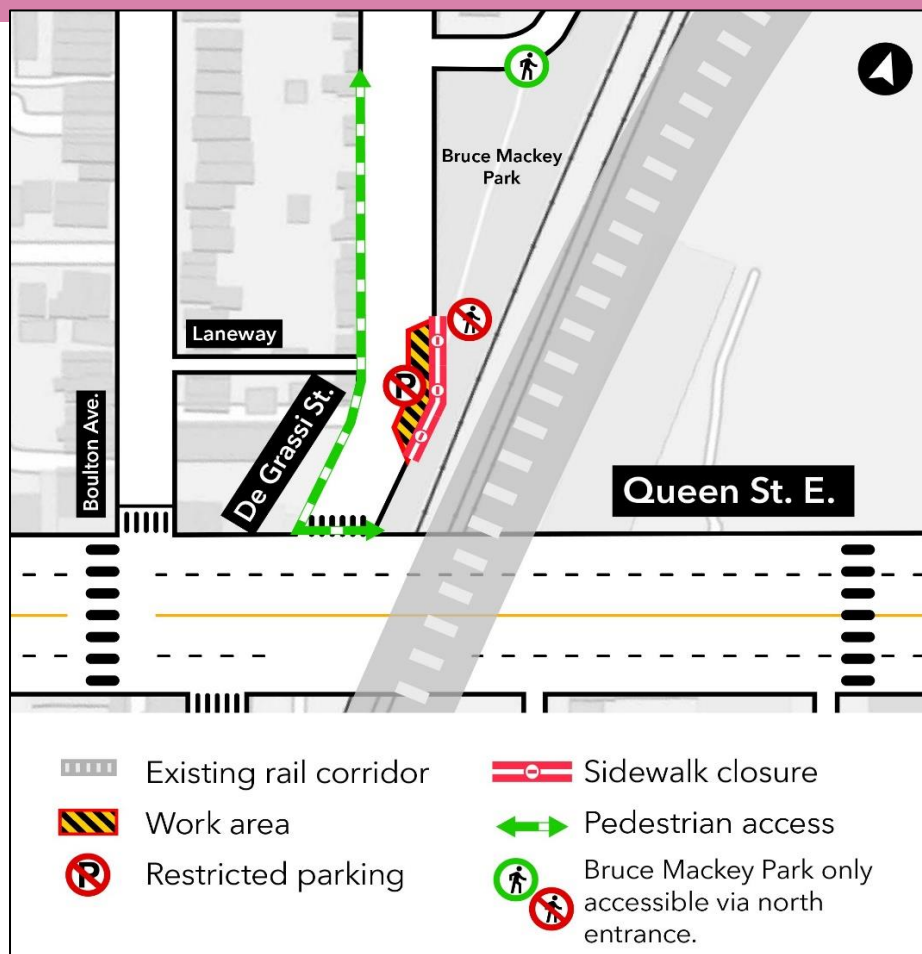


Sewer Works on De Grassi Street

Expected start date and duration:

- Investigation work: Starting Monday, April 22, 2024 for approximately two (2) days
- Sewer installation: Starting as early as Monday, April 29, 2024 for approximately two (2) weeks

Hours of work: Monday - Friday, between 7 a.m. - 7 p.m.



What is happening?

- As early as Monday, April 22, 2024, sewer installation work will begin on De Grassi Street north of Queen Street East.
- Utility investigation work will take place prior to the sewer installation - this work will start Monday, April 22, 2024, and take approximately two days to complete.

- Once the investigation work is completed, crews will proceed to install the new sewer - this work will start as early as Monday, April 29, 2024, for approximately two (2) weeks.
- This new sewer line is required to make space for the future Riverside-Leslieville subway station.
- Temporary parking and sidewalk closures will be required to safely perform these activities; please refer to the **Parking and pedestrian details** section below for specific information.

Parking and pedestrian details

- A portion of the sidewalk on the east side of De Grassi Street north of Queen Street East will be closed during the sewer installation.
- Street parking on Degrassi Street will be restricted in some areas to safely separate the work zone and allow space for construction.

What to expect

- Noise from construction equipment including a hydro-vacuum truck, excavators, trucks, compressor, and other equipment.
- Crews will install two new manholes and a sanitary sewer line.
- Advance signage will be in place to direct vehicles, pedestrians, and cyclists.
- Traffic barrels, fencing, and barriers will be in place to separate and secure work zones.
- Construction equipment and materials will be properly secured within the work zones.
- Traffic control personnel will be present while this work takes place.
- Work may be delayed due to weather conditions or unforeseen circumstances.

About the project

- 15.6-kilometre subway line that will make it faster and easier to travel within Toronto and beyond.
- 15 stops and more than 40 transit connections, including GO, TTC, and more.
- Approximately 30 minutes from one end of the line to the other.
- 28,000 fewer cars on the road each day.

Contact us:

Call us 24/7 at: [416-202-5100](tel:416-202-5100)

Write to us at: ontarioline@metrolinx.com

Find us on Twitter, Facebook, and

Instagram: [@ontarioline](https://www.instagram.com/ontarioline)

Visit the website:

www.metrolinx.com/ontarioline

Visit our community offices:

770 Queen Street East (near Queen & Broadview)

General hours:

Mondays, Tuesdays, and Fridays: 9 a.m. to 5 p.m.

Wednesdays and Thursdays: 10 a.m. to 6 p.m.

Thorncliffe Park:

East York Town Centre

45 Overlea Blvd., Toronto, ON M4H 1C3

Unit 153 (across from the Rogers store)

General hours:

Monday to Friday, 9 a.m. to 5 p.m.